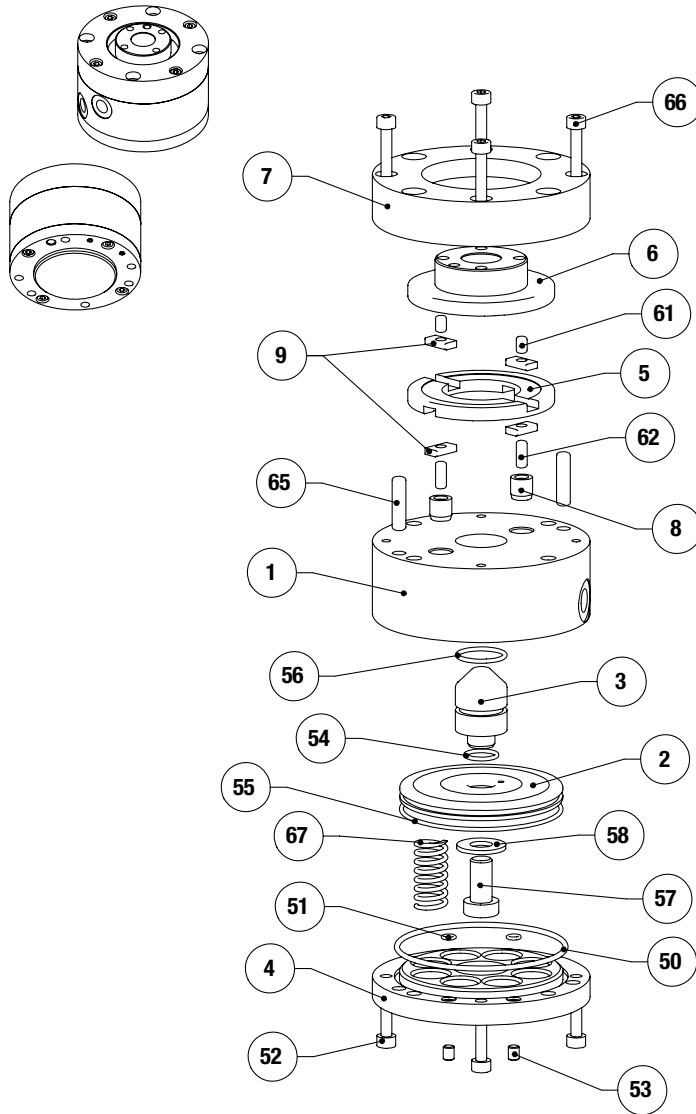


CH SERIES

Compliance Devices | Maintenance and Assembly Procedure



Item	Qty	Name
1	1	Body
2	1	Piston
3	1	Centering cone
4	1	Cap
5	1	Crossed ring
6	1	Output flange
7	1	Bottom case
8	2	Sleeve
9	4	Key
50	1	O-ring, Cap
51	2	O-ring, Cap
52	4	SS screw, Cap
53	2	SHC screw, Cap
54	1	O-ring, Piston
55	1	O-ring, Piston
56	1	O-ring, Centering cone
57	1	LHC screw, Piston
58	1	Washer, Piston
61	2	Pin, Key
62	2	Pin, Sleeve
65	2	Pin, Body
66	4	SHC screw, Flask
67	6	Spring

NOTE: Contact the Robohand Sales Department for a complete spare parts list with order numbers and prices.

Assembly Procedures

- Press-in the bushing (#8) into the body (#1)
- Insert the pins (#65) into the body (#1)
- Lubricate and insert the pins (#62) into the bushings (#8)
- Lubricate and insert the keys (#9) into the pins (#62)
- Lubricate and assemble the crossed ring (#5) onto the body (#1).
The keys (#9) have to be positioned into the slots of the crossed ring
- Insert the pins (#61) into the output flange (#6)
- Lubricate and insert the keys (#9) into the pins (#61)
- Assemble the sub assembly output flange and keys on the crossed ring (#5). The keys (#9) have to be positioned into the slots of the crossed ring
- Mount the bottom case (#7) onto the body, positioning with the pins (#65).
- Fasten the bottom case (#7) using the screws (#66) with thread locker
- Insert the O-Ring (#56) into the centering cone (#3)
- Insert the O-Ring (#54) into the inside groove of the piston (#2)
- Insert the O-Ring (#55) into the outside groove of the piston (#2)
- Assemble the piston (#2) with the centering cone (#3). For -RL option, the piston counterbore holes have to face the body counterbore holes. Opposite mounting for -RA option.
- Fasten the centering cone (#3) with the piston (#2) using the washer (#58) and the screw (#57) with thread locker
- For -RL option, insert the springs (#67) into the body and piston counterbore holes.
- For -RA option, insert the springs (#67) into the cap and piston counterbore holes.
- Insert the O-Ring (#50) into cap groove (#4)
- Insert the O-Ring (#51) into counterbore holes of the cap (#4)
- Screw the SS screws into the cap (#4) with thread locker
- Locate and insert the cap (#4) into the body (#1) using the screws (#52) with thread locker.



Seal Kit Items



Thread Locker



Krytox™ Lubricant



Lightweight Machine Oil



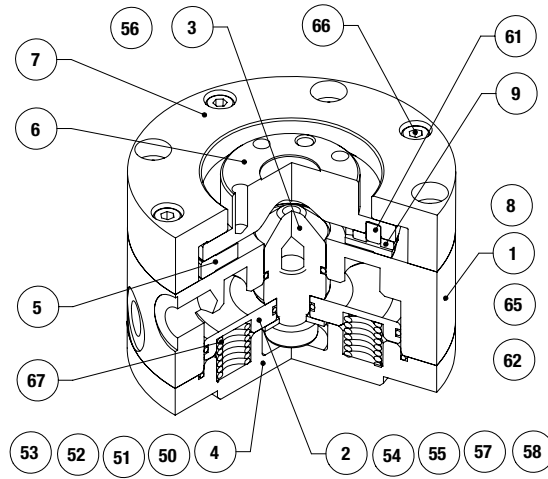
Teflon® Based Grease



Super Bonder



Third Angle Projection



Item	Qty	Name
1	1	Body
2	1	Piston
3	1	Centering cone
4	1	Cap
5	1	Crossed ring
6	1	Output flange
7	1	Bottom case
8	2	Sleeve
9	4	Key
50	1	O-ring, Cap
51	2	O-ring, Cap
52	4	SS screw, Cap
53	2	SHC screw, Cap
54	1	O-ring, Piston
55	1	O-ring, Piston
56	1	O-ring, Centering cone
57	1	LHC screw, Piston
58	1	Washer, Piston
61	2	Pin, Key
62	2	Pin, Sleeve
65	2	Pin, Body
66	4	SHC screw, Flask
67	6	Spring

NOTE: Contact the Robohand Sales Department for a complete spare parts list with order numbers and prices.

