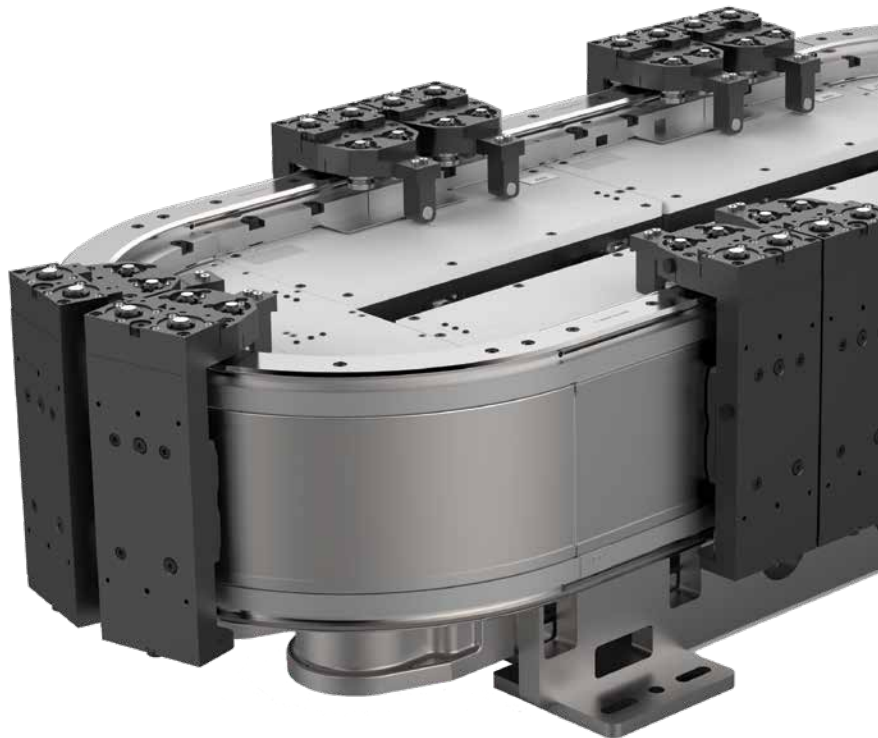


# CAMCO iQue™

## Intelligent Conveyor Powered by iTrak™

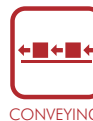
CAMCO iQue™ Intelligent Conveyor is today's solution for motion control challenges, providing flexibility while enhancing performance significantly. iTRAK independent movers give machine designers the opportunity to design a 'pitchless' machine that can be easily adjusted to your specific application.

The iTRAK™ technology is the next step in motion control, eliminating the rotary driven chains, belts and gears of the past. It replaces mechanics with simple, effective software profiles redefining speed and flexibility in automation.














### Product Highlights/Options

- Reduced machine footprint
- Three coil lengths available
- Modular and scalable
- Increased flexibility with a single design
- Allows flexible production scheduling



CONVEYING

### Features, Markets and Applications

 <p>SPEED</p>	<ul style="list-style-type: none"> <li>• Increased production rates – 50% or more!</li> <li>• Faster changeover with on-the-fly programming</li> <li>• Faster machines because of new capabilities</li> </ul>	 <p>PACKAGING</p>	 <p>ASSEMBLY</p>
 <p>PERFORMANCE</p>	<ul style="list-style-type: none"> <li>• Multiple processes can be set up for maximum productivity</li> <li>• Change between products at the push of a button</li> <li>• Continuous and intermittent processes can be mixed on one machine</li> </ul>	 <p>CONSUMER GOODS</p>	 <p>FIXTURE AND TEST</p>
 <p>LOW MAINTENANCE</p>	<ul style="list-style-type: none"> <li>• Predictable, infrequent maintenance</li> <li>• Reduced operator interaction with internal parts of machine</li> <li>• Robust direct-drive mechanical system</li> </ul>	 <p>INDUSTRIAL</p>	 <p>CNC MACHINING</p>
		 <p>LIFE SCIENCES</p>	 <p>CLEAN ROOM</p>

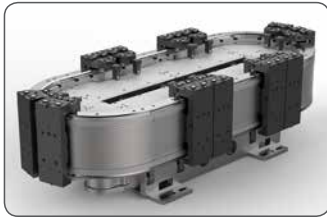
**CAMCO iQue™ Intelligent Conveyor powered by iTrak™**



Straight & 90° curve linear motor sections available in standard 400mm lengths

Available in 50mm, 100mm & 150mm coil size

Combine for racetrack, square or circle configurations at any length



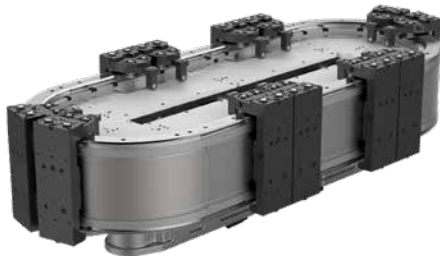
**Additional benefit from the iTRAK™ Technology**

- Modular, adaptable and scalable for any application
- Upgrade easily by reducing complex tooling
- Operate faster with less downtime
- Reduce energy consumption through direct drive

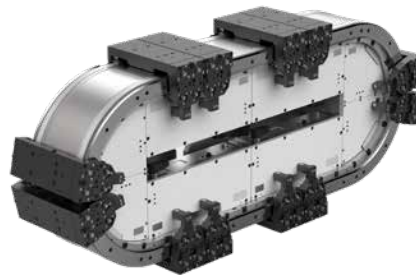
Minimum Mover Pitch	65 mm
Acceleration	> 10g
Repeatability	< 50 μm
System Length	12m per Gateway
Payload	Only limited by bearings and $F=ma$
Certifications	UL, CE
Ingress Protection	IP65
Feedback Type	Absolute
Section Length	400 mm

Motor Size	Maximum Speed	Maximum Force
50 mm	> 5 m/s	264 N
100 mm	4 m/s	529 N
150 mm	2.75 m/s	793 N

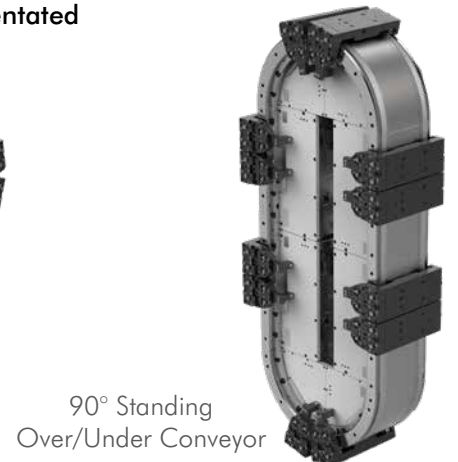
**CAMCO iQue™** Conveyor's flexible design allows the conveyor system to be orientated horizontally or vertically with an axial or radial configuration.



Carousel Conveyor



Over/Under Conveyor



90° Standing Over/Under Conveyor

The **CAMCO iQue™** Conveyor's iTRAK™ programmable linear drive allows independent control of multiple magnetically-propelled movers along a straight or curvilinear paths. Movers can be moved along the conveyor in forward or reverse motion at varying speeds, and in individual, continuous, batch and asynchronous motion sequences, dependent on customer specifications.



Batch Piece Flow



Batch to Single Piece Flow



Asynchronous Piece Flow