

BLACKHAWK'S BIG AUGUST-SEPTEMBER SALE ENDS SEPTEMBER 28th, 1959

This is your last chance to make some of the biggest savings yet in cameras, projectors, supplies and equipment, and on motion picture and slide subjects! *Special sale prices remain in effect on orders received by Blackhawk through Monday, September 28th!*



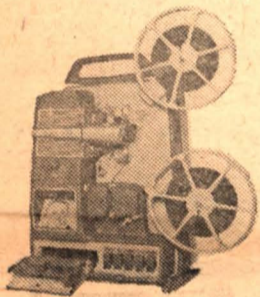
Now! A fast 8mm. daylight color film!

NEW ANSCO MOVIECHROME - 8

Twice as fast (A. S. A. 20) as any 8mm. color film heretofore on the market. A virtually grainless emulsion, brilliant color—and speed that permits your shooting earlier in the morning—later in the afternoon—and under twice as difficult light conditions. Available in double 25-foot rolls 8mm. rolls with processing by Dynacolor included—at six convenient locations throughout the U.S.A.

PRICE INCLUDES PROCESSING AND RETURN POSTAGE

25-14, pp. 8c..... **\$3.69**



New! KEYSTONE K-110 DeLUXE 8mm. PROJECTOR with motorized action editor!

The most advanced 8mm. projector yet developed! F:1.4 Magna-Scope lens, fastest in 8mm. projector field. New Super Tru-Flector 21-volt, 150-watt lamp, with 17% GREATER OUTPUT THAN CONVENTIONAL 750-WATT LAMP. Illuminated push-button control console . . . forward, reverse, still, stop and fast rewind. Safety interlock prevents rewind from operating unless rheostat control is set for high speed. New motor-driven action editor with large (over 6 square inches) ground glass viewscreen, optical ground octagonal prism. Editor powered by push-button controls or by detachable hand cranks. Built-in DuPont Mylar Tape dry butt splicer. Swing-out film gate; heavy-gauge, snap-on film guides. Self-locking gear-actuated tilt control; radio-TV interference filter; room-light switch. Fully geared throughout. Automatic "film-grip" 400-ft. reels. Super-cool, quiet, high-speed blower. Feidaway reel arms, 400-ft. reel capacity. Handsome, gold-trimmed, cast aluminum case.

MANUFACTURER'S LIST PRICE, \$199.50

30-21 (not mailable, you pay transportation on delivery); Blackhawk priced at only **\$149.95**



THE REVOLUTIONARY UNIT THAT INTRODUCES THE NEW ERA IN ELECTRONIC FLASH

THE HEILAND FUTURAMIC STROBONAR 64-B

No power pack—operates in batteries AND AC from lamphed alone. Transistorized—with not just one—but TWO Honeywell power transistors. The Futuramic operates from 3 photoflash batteries, or from ordinary AC household current. There's no dangling pack, no tangling power cord! Just connect the trim, miniaturized Futuramic to your camera and start flashing pictures. Weighs only 32-ounces without batteries. Manufacturer's list price, \$59.95.

11-15, pp. 35c. Blackhawk priced at only **\$44.95**

11-16, Eveready E-95 Battery for Strobosonar, pp. 12c..... **\$.74**

11-18, Permacad Battery for Strobosonar, pp. 27c..... **\$5.95**

11-17, Permacad Charger (recharges Permacad Battery for 8 to 12-seconds), pp. 35c..... **\$15.95**

NEW BLACKHAWK LAUREL & HARDY RELEASE!



STAN OLIVER LAUREL & HARDY

A CHUMP AT OXFORD

with Forrester Harvey • Wilfred Lucas • Forbes Murray Frank Baker • Eddie Borden • directed by ALFRED GOULDING • associate producer HAL ROACH, JR.

STREAMLINED FEATURE OF ABOUT 1600-ft., 16mm. SOUND

available for shipment to points in Continental United States, Alaska and Hawaii

640-26, pp. 34c..... **\$79.95**

See page 10 for other Laurel & Hardy features and short subjects in 16mm. sound and 16mm. silent; page 2 for 8mm.



New!

BULLFIGHT LA FIESTA BRAVA

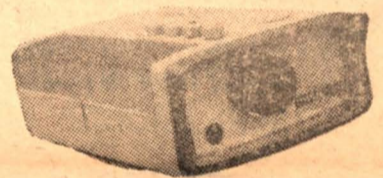
Action packed from beginning to end! Classic bullfighting at its very best! See the foremost matador of Spain fighting in the bull ring at Mexico City! See the matador tossed by the bull in a dramatic sequence!

205-29, 50-ft., 8mm, color version, (pp. 6c)..... **\$6.99**

800-29, 50-ft., 8mm, black and white version, (pp. 6c)..... **\$2.49**

605-29, 100-ft., 16mm, silent color version, (pp. 6c)..... **\$14.49**

600-29, 100-ft., 16mm, silent black and white version, (pp. 6c)..... **\$4.49**

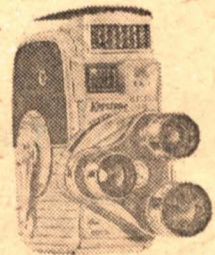


BRUMBERGER fully automatic 2"x2" SLIDE PROJECTOR

This 2"x2" automatic slide projector handles all types of slide mounts; has 4-inch f:3.5 projection lens; built-in timer automatically changes slides every 13-seconds (or you may use as finger-tip automatic to advance slides at varying intervals); inverse-induction cooling system; all controls on top of projector. Uses 300-watt CYC lamp. Projector is self-contained unit with convenient fold-out handle.

MANUFACTURER'S LIST PRICE, \$99.50

16-45, pp. 83c. Blackhawk close-out priced at only **\$44.44**



Just Out!

KEYSTONE K-4-C ELECTRIC EYE 8mm. 3-LENS TURRET CAMERA

The K-4-C Electric Eye Camera is far superior to earlier electric eye models. Its mechanism responds to light variations very quickly, and operates and changes lens openings while the camera is running. And, the K-4-C will care for all present and anticipated film speeds. The K-4-C turret contains f:2 standard, wide-angle and telephoto lenses. Manufacturer's list price, \$109.50.

21-75, pp. 35c. Blackhawk priced at only **\$79.95**

KEYSTONE K-4-D ELECTRIC EYE 8mm. 3-LENS TURRET CAMERA

Similar to the K-4-C electric eye camera described above, but fitted with f:1.8 standard, wide angle and telephoto lenses. The K-4-D is finished in two-tone gray with gray vinyl and chrome trim. Manufacturer's list price, \$139.50.

21-76, pp. 35c. Blackhawk priced at only **\$97.95**



Announced just as we went to press . . .

2"x2" COLOR SLIDE SETS MISS UNIVERSE, 1959

EIGHT SLIDES PER SET

99c per set **\$4.99** all 6 sets

ALLOW 3c PER SET FOR POSTAGE

MISS UNIVERSE 1959—SET 1 (SSS No. 4220)

Contains: Miss Welcome; Miss Japan (First Prize, Miss Universe 1959); Arlene Howell (Miss U. S., 1959); Miss Luz Marina Zuluaga; Miss Turkey; Catalina Swim Suit Float; Miss Korea; Pasadena Tournament of Roses

MISS UNIVERSE 1959—SET 2 (SSS No. 4230)

Contains: Miss Norway (Second Place Winner); Miss Sweden; Miss Luxembourg; Miss Burma; Miss Thailand; Miss Israel; Miss Iceland; Miss England

MISS UNIVERSE 1959—SET 3 (SSS No. 4240)

Contains: Miss Denmark; Miss Italy; Miss Greece; Miss Germany; Miss France; Miss Austria; Miss Holland; Miss Belgium

MISS UNIVERSE 1959—SET 4 (SSS No. 4250)

Contains: Miss Brazil (5th Runner-Up); Miss Ecuador; Miss Peru; Miss Argentina; Miss Colombia; Miss Uruguay; Miss Mexico; Miss Bolivia

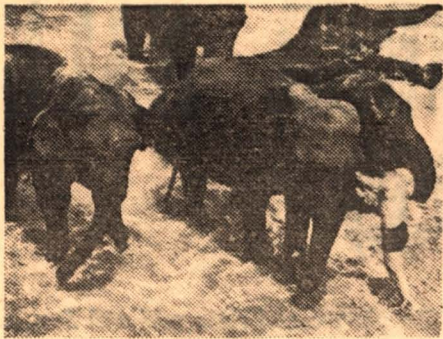
MISS UNIVERSE 1959—SET 5 (SSS No. 4260)

Contains: Miss District of Columbia; Miss Florida; Miss Illinois; Miss Ohio; Miss Massachusetts; Miss Washington; Miss Maine; Miss Oklahoma

MISS UNIVERSE 1959—SET 6 (SSS No. 4270)

Contains: Miss New York; Miss Iowa; Miss Michigan; Miss South Dakota; Miss Louisiana; Miss Indiana; Miss Arizona; Miss North Dakota

Blackhawk Films
DAVENPORT, IOWA



"ELEPHANT HUNT"



"THE CURE"



"DOUBLE WHOOPÉE"



"FROM NEW GUINEA TO JAPAN WITH THE RED ARROW DIVISION"

BLACKHAWK'S 8mm. movies IN B&W

SAVE 50c, \$1.00, \$1.50, \$2.00 PER PRINT

DURING BLACKHAWK'S AUGUST-SEPTEMBER CLEARANCE SALE!

COLLECTORS' ITEMS

- THE AMERICANO (825-feet), with Douglas Fairbanks, Alma Rubens, Reg. \$19.98, pp. 27c \$17.98
ADMIRAL DEWEY, HERO OF MANILA BAY (200-feet), Reg. \$5.98, pp. 12c \$5.48
BATHING GIRLS—THEN AND NOW (150-feet), Reg. \$4.49, pp. 12c \$3.99
THE BUSHER (700-feet), with Charles Ray, Colleen Moore, John Gilbert, Reg. \$19.98, pp. 27c \$17.98
CORONATION DAYS, 1902 and 1911, AND OTHER PICTURES (150-feet), Reg. \$4.49, pp. 12c \$3.99
DAYS OF MCKINLEY, BRYAN AND TEDDY ROOSEVELT (150-feet), Reg. \$4.49, pp. 12c \$3.99
THE DOLL HOUSE MYSTERY (300-feet), Reliance Production, circa 1915, Trains and motor cars, Reg. \$8.98, pp. 18c \$7.98
AN EDISON ALBUM (175-feet), Reg. \$4.98, pp. 12c \$4.48
THE FIRST 500-MILE INDIANAPOLIS SPEEDWAY RACE, 1911 (150-feet), Reg. \$4.49, pp. 12c \$3.99
THE FIRST GLIDDEN TOUR, 1905, Reg. \$5.98, pp. 12c \$5.48
THE FOILED ELOPEMENT (200-feet), with James Cruze, Marguerite Snow, A chapter from "Zadora", Reg. \$5.98, pp. 12c \$5.48
FOLLIES, FOIBLES AND FASHIONS, 1903-1905 (200-feet), Cheesecake of the day, Reg. \$5.98, pp. 12c \$5.48
FLIVVERING (150-feet), with Victor Moore, Reg. \$4.49, pp. 12c \$3.99
ON A GOOD OLD FIVE CENT TROLLEY RIDE (150-feet), Reg. \$4.49, pp. 12c \$3.99
THE RETURN OF DRAW EGAN (700-feet), with Wm. S. Hart, Margery Wilson, Robert McKim, Reg. \$19.98, pp. 27c \$17.98
THE RUINS OF SAN FRANCISCO, 1906 (100-feet), Reg. \$3.99, pp. 12c \$3.49
THE SAGA OF WILLIAM S. HART (700-feet), Reg. \$19.98, pp. 27c \$17.98
TOMMY BURNS VS. BILL SQUIRES, 1907 (125-feet), Reg. \$4.49, pp. 12c \$3.99
THE UNWELCOME GUEST (275-feet), with Mary Pickford, Reg. \$8.98, pp. 18c \$7.98

LAUREL & HARDY COMEDIES

- (Sorry, but we can ship prints of Laurel and Hardy Comedies only to destinations in Continental United States, Alaska and Hawaii)
ANGORA LOVE (325-feet), Reg. \$8.98, pp. 18c \$7.98
BIG BUSINESS (300-feet), Reg. \$8.98, pp. 18c \$7.98
DOUBLE WHOOPÉE (300-feet), with Jean Harlow, Reg. \$8.98, pp. 18c \$7.98
GOOFS OF THE GOLDEN WEST (500-feet), Reg. \$12.98, pp. 23c \$11.48
THE LIVE GHOST (500-feet), Reg. \$12.98, pp. 23c \$11.48
THE MUSIC BOX (550-feet), Reg. \$15.98, pp. 27c \$13.98
NIGHT OWLS (325-feet), Reg. \$8.98, pp. 18c \$7.98
SCRAM (300-feet), Reg. \$8.98, pp. 18c \$7.98
THEM THAR HILLS (450-feet), Reg. \$12.98, pp. 23c \$11.48
TOWED IN A HOLE (500-feet), Reg. \$12.98, pp. 23c \$11.48
TIT FOR TAT (400-feet), Reg. \$9.98, pp. 18c \$8.98
TWO TARS (500-feet), Reg. \$12.98, pp. 23c \$11.48
TWO ON A TEAR (550-feet), Reg. \$15.98, pp. 27c \$13.98
WE FAW DOWN (325-feet), Reg. \$8.98, pp. 18c \$7.98
WRONG AGAIN (300-feet), Reg. \$8.98, pp. 18c \$7.98

MACK SENNETT-KEYSTONE COMEDIES

- BARNEY OLDFIELD'S RACE FOR A LIFE (150-feet), with Mabel Normand, Ford Sterling, Mack Sennett and Barney Oldfield, Reg. \$4.49, pp. 12c \$3.99
BECAUSE HE LOVED HER (300-feet), with Sam Bernard, Mae Busch, Ford Sterling and The Keystone Kops, Reg. \$8.98, pp. 18c \$7.98
A CLEVER DUMMY (300-feet), with Ben Turpin, Reg. \$8.98, pp. 18c \$7.98
HER DRAMATIC DEBUT (150-feet), with Mabel Normand, Fatty Arbuckle, Mack Sennett, Reg. \$4.49, pp. 12c \$3.99
HIS BITTER PILL (300-feet), with Mack Swain, Edgar Kennedy, Reg. \$8.98, pp. 18c \$7.98
LEADING LIZZIE ASTRAY (150-feet), with Fatty Arbuckle, Reg. \$4.49, pp. 12c \$3.99
TEDDY AT THE THROTTLE (300-feet), with Gloria Swanson, Wallace Beery, Bobby Vernon, Reg. \$9.98, pp. 18c \$8.98
WIFE AND AUTO TROUBLE (200-feet), with Willie Collier, Mae Busch and The Keystone Kops, Reg. \$4.98, pp. 12c \$4.49

MACK SENNETT COMEDIES

- ALL NIGHT LONG (300-feet), with Harry Langdon, Reg. \$8.98, pp. 18c \$7.98
BOOBS IN THE WOOD (300-feet), with Harry Langdon, Reg. \$8.98, pp. 18c \$7.98
CIRCUS TODAY (300-feet), with Billy Bevan, Madeline Hurlock, Reg. \$8.98, pp. 18c \$7.98
A HAREM KNIGHT (300-feet), with Ben Turpin, Reg. \$8.98, pp. 18c \$7.98
SUPER-HOOPER-DYNE LIZZIES (300-feet), with Billy Bevan, Reg. \$8.98, pp. 18c \$7.98
YUKON JAKE (300-feet), with Ben Turpin, Reg. \$8.98, pp. 18c \$7.98

HAL ROACH COMEDIES

- THE CAKE EATER (300-feet), with Will Rogers, Reg. \$8.98, pp. 18c \$7.98
CRAZY LIKE A FOX (300-feet), with Charles Chase, Reg. \$8.98, pp. 18c \$7.98

CHARLIE CHAPLIN COMEDIES

- THE CURE (350-feet), with Edna Purviance, Reg. \$9.98, pp. 18c \$8.98
THE FLOORWALKER (350-feet), with Edna Purviance, Reg. \$9.98, pp. 18c \$8.98
GETTING ACQUAINTED (150-feet), Reg. \$4.49, pp. 12c \$3.99
HIS NEW PROFESSION (150-feet), Reg. \$4.49, pp. 12c \$3.99
THE NEW JANITOR (150-feet), Reg. \$4.49, pp. 12c \$3.99
MAKING A LIVING (150-feet), Reg. \$4.49, pp. 12c \$3.99
POLICE (350-feet), with Edna Purviance, Reg. \$9.98, pp. 18c \$8.98
THE PAWN SHOP (350-feet), Reg. \$9.98, pp. 18c \$8.98
THE ROUNDERS (150-feet), with Fatty Arbuckle, Reg. \$4.49, pp. 12c \$3.99
TANGO TANGLES (150-feet), with Fatty Arbuckle, Ford Sterling, Reg. \$4.49, pp. 12c \$3.99
THE VAGABOND (350-feet), with Edna Purviance, Reg. \$9.98, pp. 18c \$8.98

PEARL WHITE SERIAL CHAPTERS FROM "THE PERILS OF PAULINE" AND "THE EXPLOITS OF ELAINE"

- DEADLY TURNING FROM THE PERILS (200-feet), Reg. \$5.98, pp. 12c \$5.48
THE DEATH RAY FROM ELAINE (400-feet), Reg. \$11.98, pp. 18c \$10.98
THE PIRATES' TREASURE FROM THE PERILS (250-feet), Reg. \$7.98, pp. 18c \$6.98

FAIRY TALES

- (Live action—not cartoons or puppets)
BEAUTY AND THE BEAST (150-feet), Reg. \$4.49, pp. 12c \$3.99
CINDERELLA (150-feet), Reg. \$4.49, pp. 12c \$3.99
JACK AND THE BEAN STALK (150-feet), Reg. \$4.49, pp. 12c \$3.99
LITTLE RED RIDING HOOD (150-feet), Reg. \$4.49, pp. 12c \$3.99
THE MAGIC LAMP (150-feet), Reg. \$4.49, pp. 12c \$3.99
RAPUNZEL (150-feet), Reg. \$4.49, pp. 12c \$3.99
RUMPLESTILTSKIN (150-feet), Reg. \$4.49, pp. 12c \$3.99
SNOW WHITE AND ROSE RED (150-feet), Reg. \$4.49, pp. 12c \$3.99

CHILDREN'S FILMS

- THE CIRCUS WAKES UP (150-feet), Reg. \$4.49, pp. 12c \$3.99
HEROES OF THE ALAMO (150-feet), Reg. \$4.49, pp. 12c \$3.99
THE LITTLEST ANGEL (300-feet), Reg. \$8.98, pp. 18c \$7.98

RAILROAD FILMS

- AT SHERMAN HILL ON THE UNION PACIFIC (150-feet), Reg. \$4.49, pp. 12c \$3.99
THE BLOCK SIGNAL (800-feet), with Ralph Lewis, Jean Arthur, Hugh Allen, Reg. \$19.98, pp. 27c \$17.98
THE CALIFORNIA ZEPHYR (150-feet), Reg. \$4.49, pp. 12c \$3.99
CLEAR IRON—THE STORY OF THE RDC (150-feet), Reg. \$4.49, pp. 12c \$3.99
FAMOUS TRAINS OF WESTERN RAILROADS, 1897-1903 (150-feet), Reg. \$5.98, pp. 12c \$5.48
THE GEORGETOWN LOOP, 1903 (110-feet), Reg. \$4.49, pp. 12c \$3.99
THE GREAT TRAIN ROBBERY, 1903 (150-feet), Reg. \$4.49, pp. 12c \$3.99
HIGH SPEED FREIGHT ON THE NICKEL PLATE (150-feet), Reg. \$4.49, pp. 12c \$3.99
THE HOLD-UP OF THE ROCKY MOUNTAIN EXPRESS, 1906 (150-feet), Reg. \$4.98, pp. 12c \$4.48

- THE LONEDALE OPERATOR, 1911 (200-feet), Reg. \$4.98, pp. 12c \$4.48
NIGHT MAIL (300-feet), Reg. \$8.98, pp. 18c \$7.98
THE OLYMPIAN HIAWATHA (150-feet), Reg. \$4.49, pp. 12c \$3.99
THE NARROW GAUGE CATSKILL MOUNTAIN RAILWAY (150-feet), Reg. \$4.98, pp. 12c \$4.48
ON THE BALTIMORE & OHIO (150-feet), Reg. \$4.49, pp. 12c \$3.99
ON THE CANADIAN NATIONAL (150-feet), Reg. \$4.49, pp. 12c \$3.99
ON THE DELAWARE & HUDSON (150-feet), Reg. \$4.49, pp. 12c \$3.99
ON THE EAST BROAD TOP (150-feet), Reg. \$4.49, pp. 12c \$3.99
ON THE NORFOLK & WESTERN (150-feet), Reg. \$4.49, pp. 12c \$3.99
ON THE PENNSYLVANIA (150-feet), Reg. \$4.49, pp. 12c \$3.99
THE OPEN TRACK (300-feet), with Helen Holmes, Reg. \$8.98, pp. 18c \$7.98
THE PAY TRAIN (150-feet), with Helen Holmes, Reg. \$4.49, pp. 12c \$3.99
THE PRESIDENT'S SPECIAL, 1914 (300-feet), Reg. \$8.98, pp. 18c \$7.98
RAILROADING IN THE EAST, 1897-1906 (200-feet), Reg. \$6.98, pp. 12c \$6.48
THE SUPER CHIEF (150-feet), Reg. \$4.49, pp. 12c \$3.99
TIME FREIGHT TO TIDEWATER (300-feet), Reg. \$8.98, pp. 18c \$7.98
WESTERN PACIFIC FAST FREIGHT (150-feet), Reg. \$4.49, pp. 12c \$3.99
WHEELS A-ROLLING (300-feet), Reg. \$8.98, pp. 18c \$7.98

The following group of railroad films do not have text titles, but are accompanied by printed sheets of text or narration:

- AT THE HUB OF THE BURLINGTON (100-feet), Reg. \$3.99, pp. 12c \$3.49
THE CHIEFS OF THE SANTA FE (100-feet), Reg. \$3.99, pp. 12c \$3.49
DONNER PASS (100-feet), Reg. \$3.99, pp. 12c \$3.49
SOUTHERN PACIFIC—FROM SAN FRANCISCO TO ROSEVILLE (100-feet), Reg. \$3.99, pp. 12c \$3.49
SOUTHERN PACIFIC STEAM LOCOMOTIVES (100-feet), Reg. \$3.99, pp. 12c \$3.49

SHIPS AND BOATS

- THE QUEEN ELIZABETH (150-feet), Reg. \$4.49, pp. 12c \$3.99
SUPERLINER UNITED STATES (300-feet), Reg. \$8.98, pp. 18c \$7.98
TOWBOAT ON THE RIVER (150-feet), Reg. \$4.49, pp. 12c \$3.99

AVIATION FILMS

- AIRPOWER IN TRANSITION (150-feet), Reg. \$4.49, pp. 12c \$3.99
FROM THE FIRST AIR MAIL TO THE DC-7 (300-feet), Reg. \$8.98, pp. 18c \$7.98
UNITED FLIGHT 608 (300-feet), Reg. \$8.98, pp. 18c \$7.98

BIBLE STORIES

- ABRAHAM'S SACRIFICE (300-feet), Reg. \$8.98, pp. 18c \$7.98
THE BIRTH OF MOSES (300-feet), Reg. \$8.98, pp. 18c \$7.98
THE GOOD SAMARITAN (175-feet), Reg. \$4.98, pp. 12c \$4.48
MY BELOVED SON (300-feet), Reg. \$8.98, pp. 18c \$7.98
THE NATIVITY OF OUR LORD (175-feet), Reg. \$4.98, pp. 12c \$4.48
THE PARABLE OF THE LOST SHEEP (300-feet), Reg. \$8.98, pp. 18c \$7.98
THE SAVIOUR'S BORN (300-feet), Reg. \$8.98, pp. 18c \$7.98

THE HOLY LAND

- GALILEE, LAND OF JESUS AND HIS DISCIPLES (150-feet), Reg. \$4.49, pp. 12c \$3.99
NAZARETH, THE TOWN WHERE JESUS LIVED (150-feet), Reg. \$4.49, pp. 12c \$3.99
OLD JERUSALEM AND NEW ISRAEL (150-feet), Reg. \$4.49, pp. 12c \$3.99

WORLD WAR II AND THE KOREAN WAR

- AIR SIEGE AT PLOESTI (150-feet), Reg. \$4.49, pp. 12c \$3.99
BATTLE FOR BRITAIN (450-feet), Reg. \$12.98, pp. 23c \$11.48
BURMA VICTORY (300-feet), Reg. \$8.98, pp. 18c \$7.98
FLYING BOAT VS. GERMAN SEA RAIDER (300-feet), Reg. \$8.98, pp. 18c \$7.98
FROM NEW GUINEA TO JAPAN WITH THE SUNSET DIVISION (150-feet), Reg. \$4.49, pp. 12c \$3.99

- FROM AUSTRALIA TO THE PHILIPPINES WITH THE RED ARROW DIVISION (150-feet), Reg. \$4.49, pp. 12c \$3.99
TARGET FOR TONIGHT (300-feet), Reg. \$8.98, pp. 18c \$7.98
KOREA'S FIRST FORTY DAYS (150-feet), Reg. \$4.49, pp. 12c \$3.99

"THE TRUE GLORY"

- General Eisenhower Called It, "Crusade in Europe"
PRELUDE TO INVASION (300-feet), Reg. \$8.98, pp. 18c \$7.98
D-DAY (300-feet), Reg. \$8.98, pp. 18c \$7.98
THE BATTLE OF THE BEACHHEAD (300-feet), Reg. \$8.98, pp. 18c \$7.98
THE LIBERATION OF PARIS (300-feet), Reg. \$8.98, pp. 18c \$7.98
THE PUSH TO THE GERMAN FRONTIER (300-feet), Reg. \$8.98, pp. 18c \$7.98
THE BATTLE OF THE BULGE (300-feet), Reg. \$8.98, pp. 18c \$7.98
FINAL VICTORY (300-feet), Reg. \$8.98, pp. 18c \$7.98
All seven chapters of "The True Glory", purchased together at one time, pp. 35c \$49.98

"VICTORY IN NORTH AFRICA"

- THE BATTLE OF EL ALAMEIN (450-feet), Reg. \$12.98, pp. 23c \$11.48
PREPARATIONS FOR INVASION (300-feet), Reg. \$8.98, pp. 18c \$7.98
LANDING IN NORTH AFRICA (300-feet), Reg. \$8.98, pp. 18c \$7.98
THE WINTER MONTHS (300-feet), Reg. \$8.98, pp. 18c \$7.98
THE VICTORIOUS SPRING CAMPAIGN (300-feet), Reg. \$8.98, pp. 18c \$7.98
All five chapters of "Victory in North Africa", purchased together at one time, pp. 31c \$39.98

WILD LIFE AND ADVENTURE FILMS

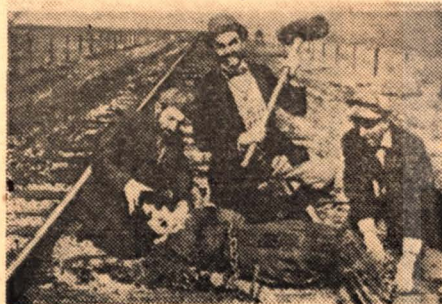
- BIG GAME ANIMALS OF KRUGER NATIONAL PARK (300-feet), Reg. \$8.98, pp. 18c \$7.98
BIRTH OF A FLORIDA KEY (150-feet), Reg. \$4.49, pp. 12c \$3.99
BLUE GEESE (150-feet), Reg. \$4.49, pp. 12c \$3.99
BLUE WARRIORS OF THE PACIFIC (150-feet), Reg. \$4.49, pp. 12c \$3.99
BUFFALO LORE (150-feet), Reg. \$4.49, pp. 12c \$3.99
CHANNEL BASS AND STRIPERS (150-feet), Reg. \$4.49, pp. 12c \$3.99
DIANA IN AFRICA (150-feet), Reg. \$4.49, pp. 12c \$3.99
ELEPHANT HUNT (150-feet), Reg. \$4.49, pp. 12c \$3.99
FUR AND FEATHERS IN ALASKA (150-feet), Reg. \$4.49, pp. 12c \$3.99
THE GREAT GAME OF FISHING (150-feet), Reg. \$4.49, pp. 12c \$3.99
KENAI BIG GAME (150-feet), Reg. \$4.49, pp. 12c \$3.99
LIZARDS AND THE GILA MONSTER (100-feet), Reg. \$3.99, pp. 12c \$3.49
MAN-TAMERS OF MEXICO (150-feet), Reg. \$4.49, pp. 12c \$3.99
PHEASANT FEVER (150-feet), Reg. \$4.49, pp. 12c \$3.99
SALT WATER WONDERLAND (150-feet), Reg. \$4.49, pp. 12c \$3.99
THE SCORPION AND THE TRAP-DOOR SPIDER (100-feet), Reg. \$3.99, pp. 12c \$3.49
SHARK ON THE LINE (150-feet), Reg. \$4.49, pp. 12c \$3.99
SNAKES OF THE COLORADO DESERT (150-feet), Reg. \$4.49, pp. 12c \$3.99
STALKING THE ROYALE MOOSE (150-feet), Reg. \$4.49, pp. 12c \$3.99
THRILL RIVER (150-feet), Reg. \$4.49, pp. 12c \$3.99
UNDERWATER ADVENTURE (150-feet), Reg. \$4.49, pp. 12c \$3.99
UNDERWATER SPEARFISHING IN THE CARIBBEAN (150-feet), Reg. \$4.49, pp. 12c \$3.99
WILD FOWL IN SLOW MOTION (150-feet), Reg. \$4.49, pp. 12c \$3.99

SPORT AND ADVENTURE

- BIRTH OF A VOLCANO (150-feet), Reg. \$4.49, pp. 12c \$3.99
DEATH IN THE ARENA (150-feet), Reg. \$4.49, pp. 12c \$3.99
FROGMEN, THE UNDERWATER EXPLORERS (150-feet), Reg. \$4.49, pp. 12c \$3.99
GIANTS AND DWARFS OF THE BELGIAN CONGO (150-feet), Reg. \$4.49, pp. 12c \$3.99
LIPSTICK AND DYNAMITE (150-feet), Reg. \$1.49, pp. 12c \$1.39
SKI SAFARI (150-feet), Reg. \$4.49, pp. 12c \$3.99
SKIING DOWN THE SWISS ALPS (150-feet), Reg. \$4.49, pp. 12c \$3.99
TAHITI, PARADISE ON EARTH (300-feet), Reg. \$8.98, pp. 18c \$7.98



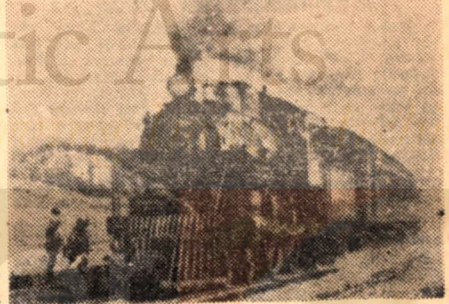
"FOLLIES, FOIBLES AND FASHIONS, 1903-1905"



"BARNEY OLDFIELD'S RACE FOR A LIFE"



"BATTLE FOR BRITAIN"

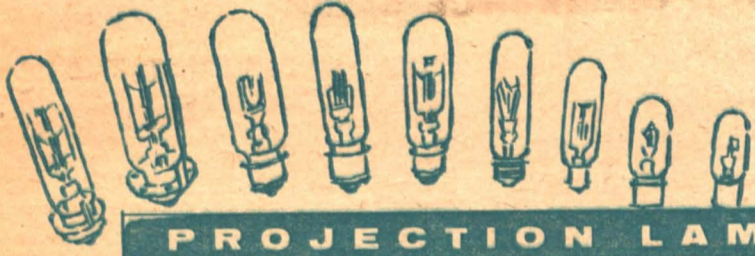


"RAILROADING IN THE EAST, 1897-1906"



All of the following brands of magnetic recording tape are on 7-inch diameter reels except for 48-17 which is on 5-inch reels. Allow 23c postage for first reel of tape, 4c for each additional reel.

48-02	Scotch Brand 111 Acetate.....	1200-ft.	\$2.39 each
48-01	Blackhawk 7-11A Acetate.....	1200-ft.	\$1.69 each
48-17	Blackhawk 7-11A Acetate (5").....	600-ft.	\$.99 each
48-03	Scotch Brand 190 Extra Play Acetate.....	1800-ft.	\$3.49 each
48-04	Hideltape Long Playing Acetate.....	1800-ft.	\$2.29 each
48-05	Hideltape Long Playing Mylar.....	1800-ft.	\$2.79 each
48-12	Hideltape Double Play Mylar.....	2400-ft.	\$3.98 each
48-18	Hideltape Mylar.....	1200-ft.	\$1.99 each



PROJECTION LAMPS

Here is a still wider range of lamps than ever before offered by Blackhawk—lamps for 16mm. and 8mm. projectors, slide projectors, opaque and overhead projectors, filmstrip projectors and viewers. These are grouped in three general classifications. The first are the conventional lamps for movie and still projectors such as have been on the market for a period of years, but now identified by their new ASA symbols. All of the lamps in this group are of Westinghouse manufacture—fresh stock—and now manufactured to operate on 115-120 volt current. The second group, where ASA symbols are not given, are Blackhawk imports from Japan, the Votar line imported from Japan, and government surplus of standard American manufacture. These are all lamps of the conventional type that have been on the market for a period of years. The third group are the new 4-pin and focus-look type lamps, many with the built-in reflectors, with which many of the new projectors are now being fitted. These operate on standard 115-120 volt current in the projectors designed to use them—but many of the lamps are odd-low voltage ratings, and the projectors carry built-in transformers to compensate for this voltage change.

ADD 12c POSTAGE FOR ONE LAMP, 23c POSTAGE FOR TWO; 4c FOR EACH ADDITIONAL LAMP OVER TWO

WESTINGHOUSE LAMPS—FRESH STOCK

This group is made up of the conventional range of lamps that have been in use for a period of years, now identified by their new ASA symbols.

Item No.	ASA Symbol	Description	List Each	Blackhawk's Price
42-01	BMD	100-watt, S-11, S. C.	\$1.00	1-79c/3-\$1.98
42-02	CEW	150-watt, T-8/71, S. C.	\$2.30	1-\$1.79/3-\$4.98
42-03	CFK	150-watt, T-8/79, D. C.	\$2.05	1-\$1.59/3-\$4.49
42-04	CLS	300-watt, T-8½/11, S. C. B.	\$3.30	1-\$2.49/3-\$7.19
42-05	CMB	300-watt, T-8½/17, D. C. B.	\$3.15	1-\$2.49/3-\$6.98
42-06	CXK	300-watt, T-10, M. P. F.	\$4.60	1-\$3.49/3-\$9.98
42-08	CMX	500-watt, T-10, M. P. F.	\$4.95	1-\$3.79/3-\$10.29
42-10	DMX	500-watt, T-20, M. P. F.	\$5.35	1-\$3.98/3-\$11.49
42-11	DDB	750-watt, T-12, M. P. F.	\$4.95	1-\$3.79/3-\$10.29
42-13	DEJ	750-watt, T-12, 3-L. R.	\$5.95	1-\$4.49/3-\$12.98
42-15	DFD	1000-watt, T-12, M. P. F.	\$5.75	1-\$4.49/3-\$12.79
42-17	DRS	1000-watt, T-20, M. P. F.	\$6.75	1-\$5.29/3-\$14.98
42-18	DFK	1000-watt, T-12, 3-L. R.	\$6.55	1-\$5.19/3-\$14.79

BLACKHAWK AND VOTAR JAPANESE IMPORTS—GOVERNMENT SURPLUS OF STANDARD AMERICAN MAKES

This group is made up of the conventional range of lamps that have been in use for a period of years, but do not carry the new ASA symbols.

42-34		300-watt, 120-volt, T-8½, S.C.B. Blackhawk		1-\$1.49/3-\$3.99
42-19		500-watt, 115-volt, T-10, M.P.F. Votar		1-\$2.29/3-\$5.99
42-35		500-watt, 120-volt, T-10, M.P.F. Blackhawk		1-\$2.29/3-\$5.99
42-20		300-watt, 115-volt, T-8½, S.C.B. Votar		1-\$1.49/3-\$3.99
42-21		300-watt, 120-volt, T-10, M.P.F., General Electric		1-\$1.99/3-\$5.69
42-23		750-watt, 115-volt, T-12, 3-L. R., Radiant		1-\$3.29/3-\$9.49
42-27		1000-watt, 115-volt, T-12, M.P.F., Radiant		1-\$2.88/3-\$8.49
42-28		1200-watt, 120-volt, T-12, M.P.F., Westinghouse		1-\$5.95/3-\$16.99
42-29		30-watt, 120-volt, S-11, S.C.B. for Mansfield Viewers		1-75c
42-14		Bell & Howell Lamp Adapters, convert regular M.P.F. lamps to B. & H. ring base, reusable		1-\$1.49

WESTINGHOUSE NEW 4-PIN AND FOCUS-LOK LAMPS

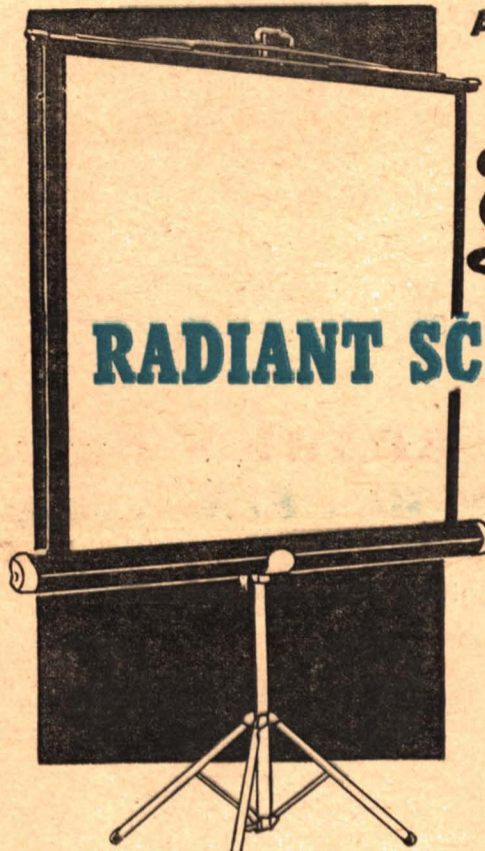
These are the new type lamps, many that operate off low-voltage from transformer built into the projector, many with built-in reflectors. All are of Westinghouse manufacture—all are fresh stock!

42-41	CWD	300-watt, T-10, 4-pin	\$3.75	1-\$2.89/3-\$8.29
42-42	CAL	300-watt, T-10, 4-pin, with reflector	\$3.65	1-\$2.98/3-\$7.98
42-32	DGA	300-watt, T-10, 4-pin	\$4.05	1-\$2.98/3-\$8.49
42-43	CRA	300-watt, T-10, 4-pin, with reflector	\$4.30	1-\$3.29/3-\$9.29
42-44	BEH	150-watt, T-10, 4-pin	\$2.20	1-\$1.69/3-\$4.79
42-45	DBJ	500-watt, T-12, focus-look	\$5.50	1-\$4.29/3-\$12.29
42-46	DFR	500-watt, T-12, focus-look with reflector	\$5.50	1-\$4.29/3-\$12.29
42-47	CZA	500-watt, T-10, 4-pin, with reflector	\$4.95	1-\$3.79/3-\$10.29
42-48	CZB	500-watt, T-10, 4-pin, with reflector	\$4.95	1-\$3.79/3-\$10.29
42-33	DAK	500-watt, T-10, 4-pin	\$4.70	1-\$3.69/3-\$9.98
42-49	CAR	150-watt, T-10, 4-pin, with reflector	\$2.50	1-\$1.98/3-\$5.49
42-50	DFA	150-watt, T-12, 4-pin, with reflector	\$5.25	1-\$3.98/3-\$11.49
42-51	DCA	150-watt, T-12, 4-pin, with reflector	\$5.25	1-\$3.98/3-\$11.49
42-52	DLG	150-watt, T-14, 4-pin, with reflector	\$6.10	1-\$4.79/3-\$13.98
42-53	DEP	750-watt, T-12, 4-pin	\$5.35	1-\$3.98/3-\$11.49

AUGUST-SEPTEMBER

SCREEN SPECIAL

RADIANT SCREENMASTER



The new Radiant SCREENMASTER with amazing "truly" lenticular UNIGLOW provides sharp, evenly lighted pictures with slides, movies or filmstrips in color or black and white. Extreme viewing angles mean a bright picture for every seat in the audience... and UNIGLOW is washable, flame proof and fungus proof. Of course, the SCREENMASTER has all deluxe features for beauty and ease of operation. Only \$24.95 for the 30" x 40". (Available up to 70" x 70".)

Our No.	Size	List	On Sale at
44-22	30"x40"	\$34.95	\$24.95
44-23	40"x40"	\$36.95	\$26.95
44-24	37"x50"	\$43.95	\$29.95
44-25	50"x50"	\$47.95	\$34.95
44-26	45"x60"	\$53.95	\$36.95
44-27	60"x60"	\$59.95	\$39.95
44-28	52"x70"	\$59.95	\$39.95
44-29	70"x70"	\$64.95	\$44.95

OTHER RADIANT SCREEN VALUES

RADIANT METEOR

Popular priced tripod screen with Hi-Fleet glass beaded surface, fungus resistant and washable.

Our No.	Size	List	On Sale at
44-01	30"x40"	\$12.95	\$ 7.95
44-06	40"x40"	\$14.95	\$ 9.95
44-16	37"x50"	\$18.95	\$11.95
44-10	50"x50"	\$20.95	\$12.95

RADIANT "EC" WALL AND CEILING SCREEN

Top efficiency large auditorium screen. Dual purpose hangers for either wall or ceiling; Hy-Fleet fine grain glass beaded surface.

Our No.	Size	List	On Sale at
43-01	6'x8'	\$ 96.00	\$ 59.95
43-02	7'x9'	\$106.00	\$ 74.95
43-03	8'x8'	\$102.00	\$ 74.95
43-04	8'x10'	\$127.00	\$ 87.95
43-05	9'x9'	\$115.00	\$ 84.95
43-06	9'x12'	\$175.00	\$119.95
43-07	10'x10'	\$138.00	\$ 94.95
43-08	12'x12'	\$195.00	\$129.95

RADIANT "W" WALL SCREEN

High quality map-type screen with Vyna-Fleet glass beaded surface, fungus and flame proof, and washable. Housed in lightweight, sturdy metal case in streamlined design. Supplied with dual purpose brackets for mounting from either wall or ceiling. Fabric rolls up or down smoothly and effortlessly—hangs evenly for truly enjoyable projection.

Our No.	Size	List	On Sale at
43-10	37"x50"	\$17.95	\$12.95
43-11	40"x40"	\$14.45	\$10.95
43-12	45"x60"	\$27.50	\$19.95
43-13	50"x50"	\$20.50	\$14.95
43-14	52"x70"	\$37.50	\$24.95
43-15	60"x60"	\$33.00	\$24.95
43-16	63"x84"	\$54.95	\$37.95
43-17	70"x70"	\$43.50	\$29.95
43-18	72"x96"	\$69.95	\$49.95
43-19	84"x84"	\$62.50	\$44.95

SCREENS, BECAUSE OF DIMENSIONS, ARE NOT MAILABLE AND ARE THEREFORE NORMALLY SHIPPED BY EXPRESS. YOU PAY TRANSPORTATION ON DELIVERY, NO. C.O.D. SHIPMENTS ON SCREENS.

EASTIN SCHOOL FILMS

in 16mm. sound!

Literature

Macbeth \$55.00

(600-feet). Two famous scenes from Shakespeare's powerful tragedy, Macbeth, are combined in this valuable production. First we are given a gripping rendition of Act II, Scene 2, in which Macbeth, urged on by his ambitious wife, murders Duncan, King of Scotland. Then we witness a masterly performance of Act V, Scene 1, in which Lady Macbeth appears in her weird and dramatic sleepwalking scene. In addition to brilliant photography and sound reproduction, this film offers inspired acting by a distinguished cast, impressive sets which recreate the interior of a medieval castle, and a musical score played by the London Symphony Orchestra.

Julius Caesar \$55.00

(700-feet). In this superb picturization of Act III, Scene 2 of William Shakespeare's famous tragedy, Julius Caesar, we are first given an intriguing glimpse of the Roman Forum. News of Caesar's murder is excitedly spread, Brutus and his fellow conspirators emerge from the Senate House to harangue the gathering mob, Caesar's body is brought forth, and finally Mark Antony delivers the famous funeral oration which has become a standard of eloquence to the English-speaking world. Students who see this production can hardly fail to gain a new appreciation of the power, beauty and dramatic appeal of Shakespeare's masterpieces.

Othello \$100.00

(1600-feet). In this condensed version of Othello, a talented English cast enacts the principal scenes from Shakespeare's classic tale of love and jealousy. John Slater plays Othello, the Moorish general who is tricked into suspecting the Venetian wife he so dearly loves; Sebastian Cabot is Iago, the ambitious and false friend who treacherously plants the seeds of jealousy in Othello's mind; and Luanna Shaw is the lovely and ill-fated Desdemona, the innocent victim of Iago's perfidy and Othello's jealousy. Both the plot and the atmosphere of the tragic drama are skillfully conveyed.

Shakespeare's England Today (In Color) \$125.00

(600-feet). Here is a film that takes us to see many places associated with Shakespeare as they appear today, just as they are seen by thousands of visitors each year—but with an added insight into the effect they had in shaping Shakespeare's life and writings. We visit the home of Mary Arden, the house in which Shakespeare was born, the church where he was baptized, the school he attended, the lovely cottage of Ann Hathaway, sites in London where he lived and worked, the remains and gardens at New Place, and his grave, among other places associated with him.

Elegy Written in a Country Churchyard \$37.50

(600-feet). In Buckinghamshire, near Windsor, is the

tranquil parish of Stoke Poges, immortalized by Thomas Gray in his Elegy Written in a Country Churchyard. This film takes us on a pilgrimage to this lovely spot, permitting us to linger over the many interesting details of the fine old Church and famous Churchyard. It then gives us a brief biographical sketch of the gentle poet, and shows us Stoke Court, where he lived, and Eaton College where he studied. The picture closes with a reading from the Elegy, illustrated with appropriate scenes from the countryside which Gray knew and loved so well.

Tennyson's Land of Lyonesse \$25.00

(400-feet). Opening with a quotation from the Idylls of the King, this picture first takes us to ancient ruins, localities, and relics associated with the King Arthur legend and the long-lost land of Lyonesse. It goes on to introduce us to the works of the poet, Lord Alfred Tennyson, and to give us well-chosen readings from his other masterpieces, including In Memoriam, The Brook, and Crossing the Bar. The film's pictorial content, particularly the scenes accompanying the poetic passages, is notable for its quiet beauty and photographic excellence. Appropriately, the closing sequence shows us Tennyson's resting place in the Poet's Corner at Westminster Abbey.

Music

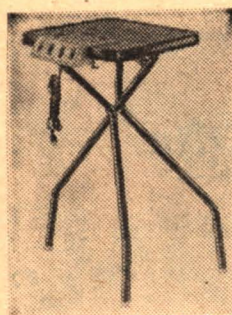
Instruments of the Orchestra \$55.00

(700-feet). In this cleverly conceived and brilliantly executed film, Dr. Malcolm Sargent, the famous British conductor, explains that a symphony orchestra can be likened to a single great musical instrument with four parts—the wood winds, brass, strings, and percussion. To illustrate this, he leads the London Symphony Orchestra in Benjamin Britten's specially written music, consisting of Variations and a Fugue on a theme by Henry Purcell. First, Dr. Sargent "takes the orchestra to pieces" and shows how music is produced by each of twenty-six different instruments. Then he "puts the orchestra together again" and conducts the lovely Fugue.

American History

Remember the Alamo \$100.00

(1500-feet). The interplay of historical forces which brought about the Texas War of Independence is the subject of this film. The year 1833 finds 30,000 American colonists in Texas, then a part of Mexico. The settlers grow restive when liberal grants and guarantees of the new Mexican Republic are repudiated by a dictatorial president, General Santa Anna. Despite the conciliatory efforts of Stephen F. Austin and other leading Texans, a rebellion develops. Santa Anna's army enters Texas, but finds its way blocked by the heroic little garrison of the Alamo. The tragic siege inspires the famous battle cry, "Remember the Alamo!"



**ACME-LITE
PROJEK-
TABLE**

MODEL 55

with 4-way Power
Panel, Slide View-
er and Service Lite

The new Acme-Lite Projek-Table eliminates shaky, makeshift arrangements for your movie or slide projector. The electrified triple outlet Power Panel with combined built-in viewer and hinged service light makes Projek-Table a complete unit for every projection need. Use one outlet for projector, one outlet for tape recorder, one outlet for projector or other appliance. No more fumbling in the dark for light switches . . . no more need to search for extra wall outlets. Large viewing window permits previewing of slides, and may be lifted to permit bright beam of light to flood working parts of projector. Height, 30-inches; top 15x17-inches. Folds flat for storage.

MANUFACTURER'S LIST PRICE, \$21.95

47-08 (not available), you pay trans-
portation on delivery **\$17.95**



New!

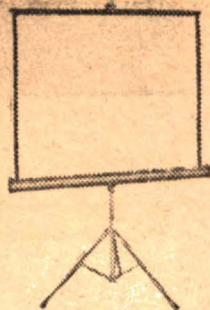
**WOLLENSAK "47"
8mm. SPOOL-TYPE
ELECTRIC EYE-MATIC
CAMERA**

Completely automatic operation with super-fast Wol-
lensak 13mm. f:1.8 lens; optic scale with insufficient
light signal; automatic back-light compensation; sim-
plified drop-in spool loading; large "picture-window"
optical viewfinder; hinged door with positive door
lock; extra powerful long-run motor; precision foot-
age indicator; convenient rapid crank wind; contin-
uous run and single frame exposure provision; compact
palm size unit; extremely light weight; two-toned gray
and chrome finish.

Manufacturer's list price, **\$89.50**

Blackhawk August-September Sale
Priced (plus 35c postage), only **\$49.98**

**Best Buy!
BRAND NEW,
FIRST QUALITY
RADIANT
VYNA-FLECT
FILMASTER
TRIPOD
SCREENS**



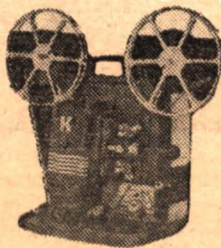
We have just made an advantageous purchase of three
sizes of this quality line of Radiant screens with the
famous Vyna-Flect glass beaded fabric that is flame
and mildew-proof and washable.

44-36 37"x50", list \$31.95, was
\$19.99, now only **\$16.66**

44-34 45"x60", list \$39.95, was
\$24.44, now only **\$19.99**

44-35 52"x70", list \$47.95, was
\$28.88, now only **\$24.44**

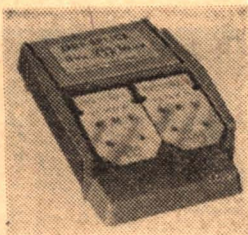
Screens generally exceed dimensions for mailing, and
are thus shipped by express—you pay
transportation on delivery.



**KEYSTONE K-100Z
ZOOM LENS
8mm. PROJECTOR**

The new "super-bright" Keystone 8mm. projector with
the new 21-volt, 150-watt Super Tru-Flector Lamp
that gives brighter, whiter light than the conventional
750-watt lamp. (Projector has built-in compensation
for that this lamp operates from regular 110-volt,
AC.) And, the new "Auto-Zoom" lens will fill a
30"x40" screen at any distance from 11 to 20-feet—
other size screens at proportionate distance ranges.
The K-100Z has precision focusing knob, room-light
switch, geared film wind and 400-ft. reel capacity.
Handsome two-tone brown cast aluminum body with
gold trim. Complete with case and Mylar Tape Quick-
Splice Kit.

30-19 (not available, you pay transportation on de-
livery), nationally advertised at \$119.95, Blackhawk
priced at only **\$99.95**



New!

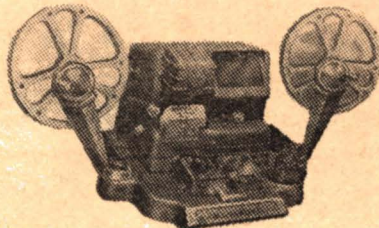
MANSFIELD

**8mm./16mm. DRI-SPLICE
SPLICER**

This new economy-priced "Dri-Splice" Splicer by
Mansfield is designed for all mm. and 16mm. film.
It has a built-in storage compartment for splicing
tape . . . an all die-cast aluminum base . . . stain-
less steel splicing blades . . . precision made . . .
instant, permanent dry, splices require no scraping,
no cement, no clamp. Manufacturer's list, \$4.95.

34-13, pp. 23c, Blackhawk priced at
only **\$3.69**

Now Close-Out Priced!



**MANSFIELD PORTABLE
FILM EDITOR FOR BOTH
16mm. AND 8mm.**

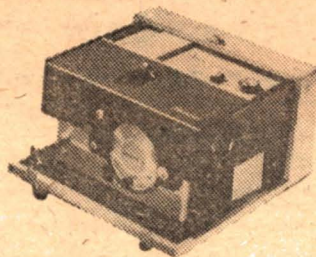
A modern streamlined motion picture editor for
speedy editing, splicing and previewing of 16mm. or
8mm. film. DeLuxe action viewer provides large,
brilliant 2"x3" picture size with exclusive built-in
focusing and framing controls. Unit features "fold-
away" rewind arms for extreme compactness and
portability. Arms lock securely when in use, and
swivel back on base for storage purposes. Equipped
with all-steel automatic splicer for fast, fool-proof
splicing. Compact unit in case measures 13"x12"x8"
and weighs only 9-pounds.

16mm. Mansfield DeLuxe Portable Film Editor, list
\$49.50, our No. 24-05, postage 83c, was \$37.95, now only **\$29.99**

8mm. Mansfield DeLuxe Portable Film Editor, list
\$45.00, our No. 24-03, postage 83c, was \$32.95, now only **\$26.66**

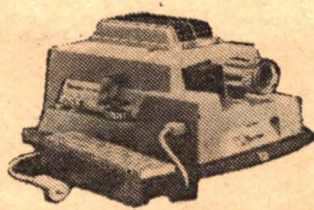
16mm. Mansfield Standard Portable Film Editor, (same
as deluxe except without carrying case), list \$39.95, our No. 24-04, postage 55c, was \$32.95, now only **\$24.44**

8mm. Mansfield Standard Portable Film Editor (same
as deluxe except without carrying case), list \$39.95, our No. 24-02, postage 55c, was \$27.95, now only **\$22.22**



**KODAK CAVALCADE
MODEL 500 2"x2"
AUTOMATIC SLIDE
PROJECTOR**

Completely new versatility in automatic projection.
Projector changes slides either at preset intervals,
semi-automatically, or manually. Slides stay in focus.
Unique editing feature allows showing single slides
or allows editing slides without removing the maga-
zine from the projector. Slides are stored and shown
in new-type magazine which is inserted into the
projector right side up. Brightness selector provides
choice of 500-watt or 300-watt illumination. Movable
pointer for pointing out details of each slide. Extra-
fast slide change minimizes dark-screen time between
slides. Micro-focus elevation and focus adjustments.
Optical system, condenser lenses and reflector readily
removable for cleaning. Preview screen and cord stor-
age provided inside cover. Color: textured gray and
black with gold color trim. Comes complete with
one tray (No. 1, for 40 cardboard mounted slides).
16-16, manufacturer's list price, \$116.66
\$149.50; pp. 87c **\$116.66**



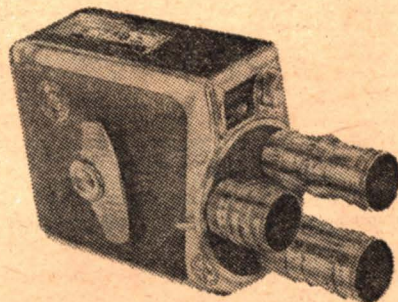
**Discontinued
Model**

**KEYSTONE K-500-A
AUTOMATIC 500-WATT
2"x2" SLIDE PROJECTOR**

This 2"x2" slide projector has everything—fully auto-
matic, remote control timer-changer—semi-automatic
remote control push-button cord—eye-ease filter—
super slide condenser. All you do is look—almost!
Your slides change automatically at the time intervals
you set—5-seconds to 60-seconds—or when you press
the button! And between slides there is no glare or
blackout to hurt your eyes—the eye-ease filter takes
care of that by projecting a restful blue light. The
Keystone K-500-A is almost identical to the current
model K-511, except that on the automatic setting
it projects at a wide range of different timings
where the K-511 projects on only six definite timing
selections.

The Keystone K-500-A with the super slide con-
denser will show any 2"x2" slide—35mm., Bantam or
super-slide—in glass, metal or cardboard mounts.
Every type of slide is projected with maximum center-
to-corner brightness. In self-contained case for ease
in carrying or storing. Not available—you pay trans-
portation on delivery. No. C.O.D.'s on this item.
Manufacturer's original list price was \$124.50.

16-12, Blackhawk August-September
Sale Priced at only **\$59.95**



**Extra Special!
ONLY A FEW AVAILABLE
KEYSTONE K-48
8mm. ROLLFILM CAMERA
with 3 f:1.9 lenses in turret!**

Yes, we have just a few of these Keystone K-48
cameras fitted with three f:1.9 lenses—focusing stand-
ard and telephoto—fixed focus wide angle! Shoots
at four different speeds! Brand new, first quality. This
camera, with this lens equipment, sold originally for
more than \$200.00!

21-72 (pp. 43c), Blackhawk priced at
only **\$77.77**

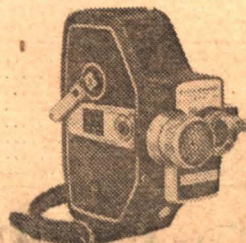


**Special
Close-out Purchase!**

**TRIMLITE
8-SECTION TRIPOD
WITH PANHEAD**

A beautifully constructed Japanese import about one-
half its usual selling price! Extends to approximately
4-feet—pans and tilts. Excellent for both 8mm. movie
and 35mm. still cameras. Finished in satin black with
brilliant chrome-plate on panhead and trim on legs.
Collapses to 10-inches—weighs less than two pounds.
49-12, pp. 31c, Blackhawk priced at
only **\$4.99**

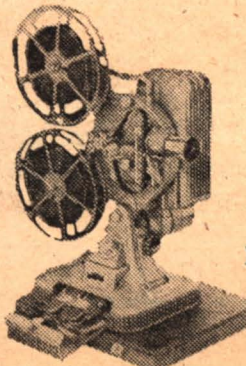
**16mm.
CAMERAS
and
PROJECTORS
FOR SCHOOL
ATHLETIC
PROGRAMS**



**BELL &
HOWELL
240EE
16mm.
ELECTRIC
EYE
CAMERA**

The world's easiest-to-use 16mm. cameras. Press a
single button to capture every scene, every thrill—
every time! The automatic Electric-Eye continuously
sets the lens for you—even if the light changes as
you shoot! Fast 20mm. f:1.9 lens in focusing mount
gives 56% wider coverage than most standard lenses.
Warning signal in viewfinder shows when there's
not enough light for good pictures. Accepts economi-
cal 100-ft. single or double perforated roll film.
Automatic threading takes only seconds. Five camera
speeds from eight to forty-eight frames per second.
Extra long 32-ft. film run per winding. Cable release
socket. Automatic control panel—shows amount of
motor power and film remaining. All die-cast alumi-
num—finished in Tyrolean gray leather and satin
chrome. Manufacturer's list price, \$329.95.

21-24, pp. 55c, Blackhawk priced at
only **\$219.99**



**KEYSTONE
BELMONT
K-16IM
16mm.
PROJECTOR**

Big, brilliant theatre-quality projection with BIG
IMAGE lens which delivers screen images 78% big-
ger. Has 750-watt lamp, automatic safety glass heat
filter, removable optical glass condensers and reflectors
for cleaning ease, rheostat variable speed control, fast
and automatic rewind, reversing switch, large size
motor and blower, easy threading, built-in editor-
viewer, Lite-o-matic switch, built-in splicer, single-
frame viewer for use in editing. Operates on 110 to
120 volts, AC-DC.

31-01, manufacturer's list price, \$169.50; not avail-
able—you pay transportation on deliv-
ery, priced at only **\$117.77**

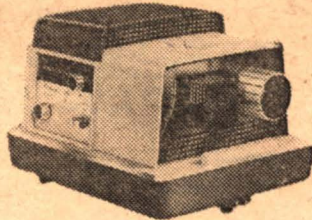


**KEYSTONE
CRITERION
A-9 16mm.
ROLLFILM
CAMERA**

Light and compact, it is a precision instrument, su-
perbly engineered. Has f:2.5 coated and color-corrected
lens in fixed-focus mount. Optical viewfinder close to
lens, lets you see what lens see. Takes at seven speeds
from 10 to 64 frames—three-way trigger for single
frame, continuous lock run and self-movies—audible
scene-length indicator reports both audibly and visibly
as to footage exposed—its single claw takes one side
perforated sound film as well as regular perforated
stock. Heavy duty spring motor drives 20 feet at one
winding. Finished in weatherproof vinyl and satin
chrome.

LIST PRICE, \$119.50

Keystone Criterion A-9 16mm. Roll-
film Camera, our No. 21-08, (plus 51c
postage), close-out priced at **\$77.77**



BALOMATIC 305

with finger-tip automatic operation. Slides change by electrical impulse—most
advanced finger-tip projector available. Front elevating device. Magnified slide
index window. 40-slide tray and case. 500-watt lamp. 4", f:3.5 projection lens.
Our No. 16-32, manufacturer's list price, \$99.50, Blackhawk's price **\$67.77**

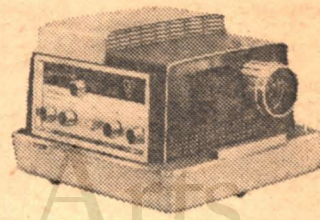
BALOMATIC 300

with finger-tip automatic operation. Has all other features of Model 305.
Our No. 16-31, manufacturer's list price, \$84.50, Blackhawk's price **\$59.99**
Balomatic Trays, manufacturer's list, each, \$1.25, our No. 17-12,
pp. 17c, Blackhawk priced at only, each **99c**

**The slide projector with the
HIGH PICTURE FIDELITY . . .**

**BAUSCH & LOMB
BALOMATIC**

Slides never pop out of focus . . . take all 2"x2" slides
. . . no condenser change required . . . famous Bausch
& Lomb lens quality . . . illuminated centralized con-
trol panels . . . finger-tip automatic or remote control!



BALOMATIC 500

with fully automatic operation. Time cycle control at any interval you wish,
from 4 to 60 seconds for each slide. Also finger-tip automatic control at any
time interval you choose. Remote control (optional). Illuminated focusing and
elevating knobs. Magnified slide index window. 40-slide tray and case. 500-watt
lamp. 5-inch, f:3.5 projection lens.
Our No. 16-33, manufacturer's list price, \$149.50, Blackhawk's **\$107.77**
January-February price

Balomatic Remote Control Cord, 15-feet in length, for across the room operation
with Models 500, 305 and 300, manufacturer's list price, \$4.95, **\$3.99**
our No. 16-34, pp. 23c, only

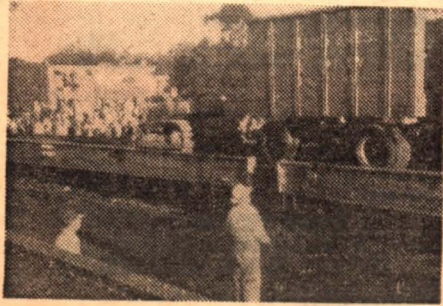
BALOMATIC PROJECTORS ARE SHIPPED BY EXPRESS—YOU PAY TRANSPORTATION ON DELIVERY

Blackhawk's 2"x2" COLOR SLIDES

SPECTACULAR FULL COLOR SLIDES FOR AS LITTLE AS 11¢ EACH

---when purchased in sets during Blackhawk's August-September Sale!

ALLOW 6c PER SET FOR POSTAGE, HANDLING AND INSURANCE



"CIRCUS TRAIN--LAST DAYS OF THE BIG TOP"

The Circus

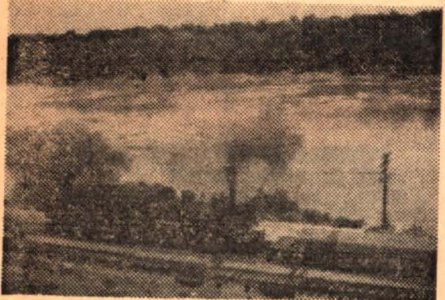
CIRCUS, 1875 (No. 119, 13 slides), reg. \$1.98, on sale at \$1.43
 CIRCUS TRAIN--LAST DAYS OF THE BIG TOP (No. 74, 30 slides), reg. \$4.59, on sale at \$3.30



FROM "ONE MOMENT PLEASE"

Intermission Slides from Nickelodeon Days

ADJUSTING FILM SHOW WILL CONTINUE IN A FEW MINUTES (No. 150, 10 slides), reg. \$1.98, on sale at \$1.60
 COMING SUNDAY (No. 78, 20 slides), reg. \$2.98, on sale at \$2.20
 IF ANNOYED WHEN HERE, PLEASE TELL THE MANAGEMENT (No. 151, 14 slides), reg. \$2.49, on sale at \$2.24
 ONE MOMENT PLEASE! (No. 76, 17 slides), reg. \$2.59, on sale at \$1.87



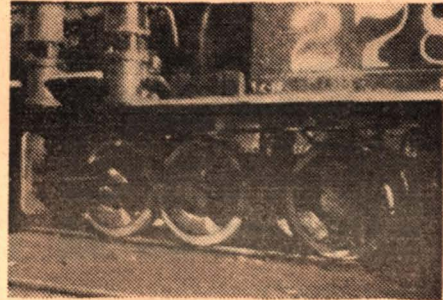
"CANADIAN NATIONAL STEAM LOCOMOTIVES"

Railroad Slides

Note: A few sets of our Railroad Slides are available in black and white only, and are so offered in the listing below.

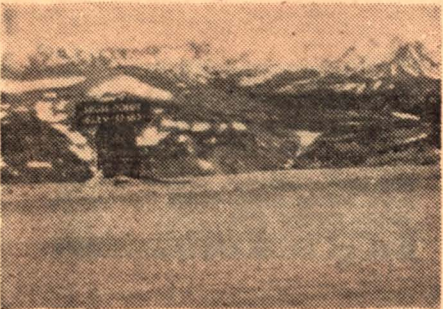
ABOARD THE MOJAVE LOCAL (No. 168, 13 slides), reg. \$1.98, on sale at \$1.43
 ANTONITO TO SILVERTON ON THE NARROW GAUGE (No. 176, 13 slides), reg. \$1.98, on sale at \$1.43
 BALTIMORE AND OHIO 2-8-2s AT NORTH VERNON, INDIANA (No. 148, 13 slides), reg. \$1.98, on sale at \$1.43
 BESSEMER AND LAKE ERIE (No. 24, 14 black and white slides), reg. \$1.49, on sale at \$1.35
 CANADIAN NATIONAL STEAM LOCOMOTIVES (No. 169, 13 slides), reg. \$1.98, on sale at \$1.43
 THE CALIFORNIA ZEPHYR IN FEATHER RIVER CANYON (No. 3a, 20 slides), reg. \$2.98, on sale at \$2.20
 CAROLINA SHORT LINE (No. 42, 19 slides), reg. \$2.98, on sale at \$2.09
 CHICAGO-TWIN CITIES STREAMLINERS (No. 65, 33 slides), reg. \$4.98, on sale at \$3.63
 CIRCUS TRAIN--LAST DAYS OF THE BIG TOP (No. 74, 30 slides), reg. \$4.59, on sale at \$3.30
 CIVIL WAR RAILROADS (No. 26, 13 slides), reg. \$1.98, on sale at \$1.43
 DONNER PASS ON THE SOUTHERN PACIFIC (No. 128, 16 slides), reg. \$2.49, on sale at \$1.76
 GUNNISON BRANCH, RIO GRANDE NARROW GAUGE (No. 180, 11 slides), reg. \$1.69, on sale at \$1.32
 THE HIGH SIERRAS FROM A CABOOSE (No. 129, 13 slides), reg. \$1.98, on sale at \$1.43
 HORSESHOE CURVE, PENNSYLVANIA RAILROAD (No. 22, 76 black and white slides), reg. \$5.98, on sale at \$5.22
 ILLINOIS CENTRAL--STEAM ACROSS THE PRAIRIE (No. 64, 16 slides), reg. \$2.49, on sale at \$1.76
 ILLINOIS TERMINAL TROLLEYS (No. 162, 8 slides), reg. \$1.29, on sale at \$0.96
 INTERURBANS ON THE ILLINOIS TERMINAL (No. 179, 18 slides), reg. \$2.89, on sale at \$1.98
 IOWA ELECTRIC RAILWAYS (No. 117, 20 slides), reg. \$2.98, on sale at \$2.20

KANSAS CITY TERMINAL (No. 73, 18 slides), reg. \$2.79, on sale at \$1.98
 NEW YORK CENTRAL STEAM LOCOMOTIVES AT INDIANAPOLIS (No. 125, 13 slides), reg. \$1.98, on sale at \$1.43
 NORFOLK & WESTERN 4-8-0s (No. 171, 13 slides), reg. \$1.98, on sale at \$1.43
 NORFOLK & WESTERN 4-8-4s (No. 172, 13 slides), reg. \$1.98, on sale at \$1.43
 NICKEL PLATE (2-8-4s (No. 126, 13 slides), reg. \$1.98, on sale at \$1.43
 NORFOLK AND WESTERN (No. 27a, 32 slides), reg. \$4.98, on sale at \$3.52
 PENNSY STEAM LOCOMOTIVES (No. 109, 13 slides), reg. \$1.98, on sale at \$1.43
 RAILROADS U. S. A. (No. 17, 47 slides), reg. \$6.98, on sale at \$5.17
 RIO GRANDE NARROW GAUGE (No. 53, 20 slides), reg. \$2.98, on sale at \$2.20
 RAILROADING DOWN UNDER ON SOUTH AUSTRALIAN RAILWAYS (No. 170, 15 slides), reg. \$2.49, on sale at \$1.65
 THE "ROARIN' ELGIN"--THE C. A. & E. (No. 178, 10 slides), reg. \$1.49, on sale at \$1.20



"GUNNISON BRANCH, RIO GRANDE NARROW GAUGE"

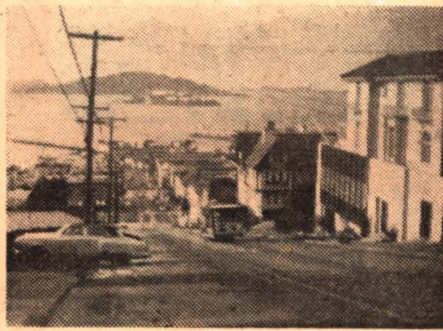
STEAM LOCOMOTIVES IN COLORADO AND WYOMING (No. 177, 20 slides), reg. \$2.98, on sale at \$2.20
 STEAM LOCOMOTIVES ON THE NORFOLK & WESTERN (No. 173, 13 slides), reg. \$1.98, on sale at \$1.43
 ST. LOUIS TERMINAL (No. 147, 20 slides), reg. \$2.98, on sale at \$2.20
 THE SANTA FE CHIEFS (No. 40, 30 color slides), reg. \$3.98, on sale at \$3.30
 THE SANTA FE--YESTERDAY AND TODAY (No. 23, 57 black and white slides), reg. \$4.49, on sale at \$3.92
 SEABOARD STEAM LOCOMOTIVES (No. 115, 56 black and white slides), reg. \$4.98, on sale at \$4.42
 STEAM LOCOMOTIVES ON THE ILLINOIS CENTRAL (No. 163, 13 slides), reg. \$1.98, on sale at \$1.43
 SOUTHERN RAILWAY STEAM LOCOMOTIVES (No. 65, 60 black and white slides), reg. \$4.98, on sale at \$4.38
 TEHACHAPI (No. 167, 20 slides), reg. \$2.98, on sale at \$2.20
 VIRGINIAN RAILROAD STEAM LOCOMOTIVES (No. 10, 23 slides), reg. \$3.79, on sale at \$2.53



"TRAIL RIDGE ROAD, ROCKY MOUNTAIN NATIONAL PARK"

Travel Slides--North America

ANIMALS OF YELLOWSTONE NATIONAL PARK (No. 66, 30 slides), reg. \$4.49, on sale at \$3.30
 AUTUMN AND WINTER IN YELLOWSTONE NATIONAL PARK (No. 67, 12 slides), reg. \$1.89, on sale at \$1.32
 AUTUMN IN YOSEMITE (No. 134, 17 slides), reg. \$2.49, on sale at \$1.87
 AUTUMN'S PAINTBRUSH IN NEW MEXICO (No. 165, 13 slides), reg. \$1.98, on sale at \$1.43
 BANFF AND LAKE LOUISE (No. 96, 8 slides), reg. \$1.49, on sale at \$0.96
 THE BLUE GRASS STATE, KENTUCKY (No. 21, 18 slides), reg. \$2.49, on sale at \$1.98
 BRIGHT LIGHTS OF BROADWAY (No. 135, 26 slides), reg. \$3.98, on sale at \$2.86
 BRYCE CANYON NATIONAL PARK (No. 61, 16 slides), reg. \$2.49, on sale at \$1.76
 THE CABLE CARS OF SAN FRANCISCO (No. 57, 20 slides), reg. \$2.98, on sale at \$2.20
 FABULOUS FLORIDA (No. 14, 50 slides), reg. \$6.98, on sale at \$5.50
 GEYSERS AND HOT SPRINGS OF YELLOWSTONE (No. 68, 30 slides), reg. \$4.49, on sale at \$3.30
 GRAND CANYON TRAILS (No. 58, 24 slides), reg. \$3.69, on sale at \$2.64
 MIGHTY NIAGARA (No. 164, 12 slides), reg. \$1.89, on sale at \$1.32
 NEIGHBOR MEXICO (No. 5, 51 slides), reg. \$6.98, on sale at \$5.61
 NEW ENGLAND AUTUMN (No. 111, 13 slides), reg. \$1.98, on sale at \$1.43
 THE NORTHERN LIGHTS (No. 158, 10 slides), reg. \$1.49, on sale at \$1.20
 THE PACIFIC NORTHWEST (No. 15, 35 slides), reg. \$4.98, on sale at \$3.85
 THE PANAMA CANAL (No. 43, 19 slides), reg. \$2.98, on sale at \$2.09
 PEAKS, PARKS AND PASSES IN COLORADO (No. 59, 24 slides), reg. \$3.69, on sale at \$2.64



"SIGHTSEEING IN SAN FRANCISCO"

SAN FRANCISCO AFTER DARK (No. 107, 15 slides), reg. \$2.39, on sale at \$1.65
 SAN FRANCISCO, THE BAY AND THE BRIDGES (No. 108, 20 slides), reg. \$2.98, on sale at \$2.20
 SAN FRANCISCO--FISHERMAN'S WHARF (No. 104, 16 slides), reg. \$2.49, on sale at \$1.76
 SAN FRANCISCO IN SPRINGTIME (No. 105, 20 slides), reg. \$2.98, on sale at \$2.20
 SIGHTSEEING IN SAN FRANCISCO (No. 106, 20 slides), reg. \$2.98, on sale at \$2.20
 SKI TIME IN ASPEN (No. 70, 16 slides), reg. \$2.49, on sale at \$1.76
 TETON NATIONAL PARK (No. 98, 8 slides), reg. \$1.49, on sale at \$0.96
 THIS IS NEW ENGLAND (No. 18, 35 slides), reg. \$4.69, on sale at \$3.85
 TRAIL RIDGE ROAD, ROCKY MOUNTAIN NATIONAL PARK (No. 149, 16 slides), reg. \$2.49, on sale at \$1.76
 TWO MILES HIGH IN ROCKY MOUNTAIN NATIONAL PARK (No. 72, 20 slides), reg. \$2.98, on sale at \$2.20
 WASHINGTON ON THE POTOMAC (No. 29, 31 slides), reg. \$4.49, on sale at \$3.41
 YELLOWSTONE--THE GRAND CANYON, FALLS, RIVERS AND LAKE (No. 142, 13 slides), reg. \$1.98, on sale at \$1.43



"ITALY--ROME, ST. PETER'S AND THE VATICAN"

Travel Slides--Europe

ANCIENT GREECE TODAY (No. 56, 47 slides), reg. \$6.98, on sale at \$5.17
 BELGIUM THE BEAUTIFUL (No. 45, 36 slides), reg. \$5.49, on sale at \$3.96
 ENGLAND--TOWN AND COUNTRY (No. 7, 49 slides), reg. \$5.98, on sale at \$5.39
 FAIR FRANCE (No. 9, 58 slides), reg. \$7.98, on sale at \$6.38
 FINNISH PASTORALE (No. 183, 26 slides), reg. \$3.98, on sale at \$2.86
 HOLLAND--HIGH SPOTS IN THE LOWLANDS (No. 44, 42 slides), reg. \$5.98, on sale at \$4.62
 ITALY--NAPLES, POMPEII, SORRENTO AND CAPRI (No. 41, 19 slides), reg. \$2.98, on sale at \$2.09
 ITALY--ROME, ST. PETER'S AND THE VATICAN (No. 38, 29 slides), reg. \$3.98, on sale at \$3.19
 ITALY--VENICE, FLORENCE, PISA AND MILAN (No. 39, 42 slides), reg. \$5.98, on sale at \$4.62
 MADRID AND TOLEDO (No. 102, 20 slides), reg. \$2.98, on sale at \$2.20
 NORWAY--MIDSUMMER SKETCHES (No. 181, 40 slides), reg. \$5.98, on sale at \$4.40



"NORWAY--MIDSUMMER SKETCHES"

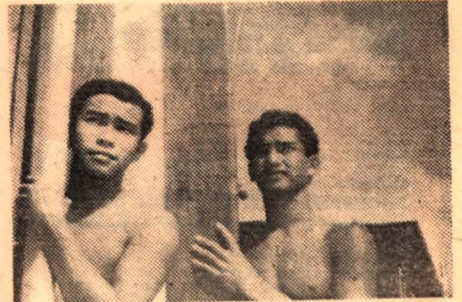
NORWAY, LAND OF THE MIDNIGHT SUN (No. 25, 48 slides), reg. \$6.98, on sale at \$5.28
 PICTURESQUE AND PROGRESSIVE DENMARK (No. 36, 48 slides), reg. \$6.98, on sale at \$5.28
 PARIS ON THE SEINE (No. 8, 47 slides), reg. \$6.98, on sale at \$5.17
 SIGHTSEEING IN LONDON (No. 6, 50 slides), reg. \$6.98, on sale at \$5.50
 SKY-HIGH SWITZERLAND (No. 13, 43 slides), reg. \$5.98, on sale at \$4.73
 SPAIN--ITS SUNNY SLOPES AND SHORE (No. 103, 26 slides), reg. \$3.98, on sale at \$2.86
 SUMMER IN LAPLAND (No. 182, 16 slides), reg. \$2.49, on sale at \$1.76
 VIKING LAND, SWEDEN (No. 37, 40 slides), reg. \$5.98, on sale at \$4.40

Travel Slides--The Pacific

BALI TODAY (No. 16, 25 slides), reg. \$3.98, on sale at \$2.75
 HAWAII--OUR VACATION PARADISE (No. 1, 50 slides), reg. \$6.98, on sale at \$5.50

Travel Slides--The Orient

INDIA--THE LAND AND ITS PEOPLE (No. 75, 36 slides), reg. \$5.49, on sale at \$3.96
 JAPAN, THE OLD AND THE NEW (No. 55, 38 slides), reg. \$5.98, on sale at \$4.18
 KOREA--SEOUL-CHUNCHON AREA (No. 57, 26 slides), reg. \$3.98, on sale at \$2.86
 KOREA--PUSAN AREA (No. 54, 38 slides), reg. \$5.98, on sale at \$4.18
 KOREA--ALONG THE 38th (No. 50, 23 slides), reg. \$3.49, on sale at \$2.53



"HAWAII--OUR VACATION PARADISE"

Travel Slides--The Middle East

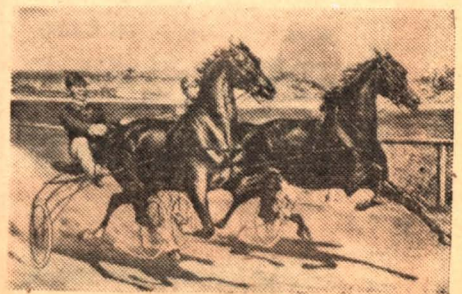
EGYPT--THE PEOPLE, THE Nile AND THE SUEZ (No. 46, 24 slides), reg. \$3.49, on sale at \$2.64
 EGYPT--ITS ANCIENT WONDERS (No. 47, 31 slides), reg. \$4.49, on sale at \$3.41
 ISRAEL, LAND OF THE BIBLE (No. 2, 50 slides), reg. \$6.98, on sale at \$5.50



"NEST LIFE OF THE GREAT HORNED OWL"

Wild Life Slides

AFRICAN BIG GAME (No. 144, 8 slides), reg. \$1.49, on sale at \$0.96
 BIG GAME COUNTRY (No. 143, 8 slides), reg. \$1.49, on sale at \$0.96
 THE CORN SNAKE AND THE MOUSE (No. 168, 8 slides), reg. \$1.49, on sale at \$0.96
 EASTERN BIRDS OF FIELD AND WOOD (No. 155, 8 slides), reg. \$1.95, on sale at \$1.60
 NEST LIFE OF THE GREAT HORNED OWL (No. 154, 8 slides), reg. \$1.95, on sale at \$1.60
 POISONOUS SNAKES OF THE UNITED STATES (No. 161, 8 slides), reg. \$1.49, on sale at \$0.96
 SNAKES OF THE NORTHEAST (No. 130, 8 slides), reg. \$1.49, on sale at \$0.96
 TYPICAL SNAKES OF THE SOUTH (No. 159, 8 slides), reg. \$1.49, on sale at \$0.96
 WILD ANIMALS OF THE AFRICAN PLAINS (No. 145, 8 slides), reg. \$1.49, on sale at \$0.96



"NECK AND NECK TO THE WIRE"

Historical Slides

BATTLES OF THE CIVIL WAR (No. 34, 28 slides), reg. \$3.98, on sale at \$3.08
 BRADY PHOTOGRAPHS OF THE CIVIL WAR (No. 30, 24 slides), reg. \$3.49, on sale at \$2.64
 CAPTURED GERMAN ARMY PICTURES (No. 12, 22 slides), reg. \$3.49, on sale at \$2.42
 CHARLESTON AND FORT SUMTER (No. 156, 20 slides), reg. \$2.98, on sale at \$2.20
 GETTYSBURG AND MR. LINCOLN (No. 166, 13 slides), reg. \$1.98, on sale at \$1.43
 NECK AND NECK TO THE WIRE (No. 157, 20 slides), reg. \$1.98, on sale at \$1.43
 THE 1939 SAN FRANCISCO WORLD'S FAIR AT NIGHT (No. 153, 13 slides), reg. \$1.98, on sale at \$1.43
 SO PROUDLY WE HAIL (No. 71, 13 slides), reg. \$1.98, on sale at \$1.43
 THE SPANISH-AMERICAN WAR ON LAND AND SEA (No. 146, 16 slides), reg. \$2.49, on sale at \$1.76
 UNION GENERALS OF THE CIVIL WAR (No. 69, 8 slides), reg. \$1.49, on sale at \$0.96
 U. S. ARMY UNIFORMS FROM THE REVOLUTION TO THE SPANISH-AMERICAN WAR (No. 123, 23 slides), reg. \$2.49, on sale at \$2.53

ALL ITEMS ON THESE COUPON PAGES ARE BRAND NEW, FIRST QUALITY, UNLESS OTHERWISE DESCRIBED

SPECIAL COUPON VALUE

TELESAR F:1.9 8mm. WIDE ANGLE AND TELEPHOTO LENS SET

Here is a set of excellent 8mm. lenses in standard D mounts—fit most cameras other than Bell & Howell. Lenses are hard coated, and have click stops. Telephoto is 1 1/2-inch in focusing mount, wide angle is 6.5mm., fixed focus.

28-18, pp. 23c, on sale at.....\$23.33

SPECIAL COUPON VALUE

Regularly \$13.98

PICTAR SLIDE EDITOR

Holds 20 2"x2" slides against slanted Plexi-glass panel illuminated with standard 40-watt lamp. Gives 4200K daylight blue illumination.

18-05, pp. 35c, on sale at.....\$12.22

SPECIAL COUPON VALUE

COMBINATION SPECIAL

3 GOOD USED 1600-FT. CAPACITY 16mm. REELS

3 GOOD USED 1600-FT. SINGLE REEL FIBRE SHIPPING CASES

54-14, pp. 75c, special at.....\$4.44

SPECIAL COUPON VALUE

Special Purchase!

COMBINATION OF NEW 400-FT. 16mm. REEL AND USED CARRYING CASE

Blackhawk Item 54-13

Each combination (pp. 27c)79c

Three (pp. 35c)\$1.99

SPECIAL COUPON VALUE

Regularly \$6.95 per 100

EMDE ALUMINUM/GLASS MOUNTS FOR 2"x2" SLIDES

The famous one piece aluminum frame with ultra-thin micro glass for mounting transparencies in standard Eastman ready mounts, or others of similar thickness, without removing transparency from mount.

15-09, box of 100, pp. 39c, on sale at.....\$6.66

SPECIAL COUPON VALUE

ANSCOCHROME 100' ROLL 16mm. CAMERA FILM

Including processing and direct return by Ansco

25-01 100-ft. roll, daylight, reg. \$9.99; pp. 18c, on sale at.....\$9.66

25-02 100-ft. roll, tungsten, reg. \$9.99; pp. 18c, on sale at.....\$9.66

SPECIAL COUPON VALUE

KEYSTONE 40-SLIDE TRAY FOR 2"x2" SLIDES

For use with American Optical, Bell & Howell, Keystone, TDC and Viewlex projectors. Made of molded plastic. Our No. 17-03.

One, reg. 89c (pp. 17c), on sale at \$.77

Three, reg. \$2.49 (pp. 27c), on sale \$.22

Twelve, reg. \$7.98 (pp. 51c), sale \$.749

SPECIAL COUPON VALUE

Regularly \$3.98

ESCO "TYPE-ON" FIBREBOARD-GLASS 2"x2" SLIDE BINDERS

Two slide glasses, die-cut fibreboard frame and heavy kraft gummed cover. Box of 100.

15-01, pp. 39c, on sale at.....\$3.77

SPECIAL COUPON VALUE

Regularly \$8.95

CINEFLEX REFLEX VIEWER For D-Mount 8mm. Cameras

A reflex viewing system that gives complete parallax elimination for attaching to any D-mount (excludes Bell & Howell) camera. You shoot what you see! Made by Elgeet.

37-06, pp. 23c, on sale at.....\$8.44

SPECIAL COUPON VALUE

Regularly \$5.98

UNIVERSAL TITLER (for 8mm. and 16mm. cameras)

Professional-like titles, special effects, animation. Complete with detailed instruction book.

36-06, pp. 35c, on sale at.....\$5.55

SPECIAL COUPON VALUE

Regularly \$1.49 per 100

BLACKHAWK 2"x2" READY MOUNTS

Unprinted cardboard ready mounts for mounting your double frame (regular 8-perforation, 35mm.) or single frame (4 perforation, 35mm., such as frame from regular filmstrip).

15-06, 100 single frame, pp. 20c...\$1.22

15-07, 100 double frame, pp. 18c...\$1.22

SPECIAL COUPON VALUE

Regularly 89c each

IMC MOLDED PLASTIC TRAYS FOR 2"x2" SLIDES

Holds 30-slides. Operates in American Optical, Bell & Howell, Keystone, TDC and Viewlex projectors—either automatic or finger-tip automatic types.

Each, 17-02, pp. 8c, on sale at.....66c

Three, 17-02, pp. 27c, on sale at.....\$1.89

SPECIAL COUPON VALUE

Originally \$6.50!

Sir Arthur Conan-Doyle's A LOST WORLD

(About 200', 8mm.)

Brand new, first quality prints, are available of this thriller about prehistoric animals!

813-14 (pp. 12c).....\$1.98

SPECIAL COUPON VALUE

KODACHROME 100' ROLL 16mm. CAMERA FILM

Including processing and direct return by Duacolor

25-09 100-ft. roll, daylight, reg. \$9.99; pp. 18c, on sale at.....\$9.49

25-10 100-ft. roll, type A, reg. \$9.99; pp. 18c, on sale at.....\$9.49

SPECIAL COUPON VALUE

Regularly \$2.79

ZADIX BATTERY VIEWER

Wide viewing screen, optical glass lens, light goes on when slide is inserted.

18-06, pp. 15c, on sale at.....\$2.66

SPECIAL COUPON VALUE

Special!

"Seconds" and good used 8mm. prints of THE BLOCK SIGNAL

with Ralph Lewis, Jean Arthur, Hugh Allen

About 800-feet, pp. 27c, only....\$12.22

SPECIAL COUPON VALUE

EKTACHROME 35mm. COLOR FILM

INCLUDING DIRECT MAIL PROCESSING BY TECHNICOLOR

13-06 20-exp. daylight (pp. 6c), reg. \$2.99, on sale at.....\$2.77

13-07 20-exp. flash (pp. 6c), reg. \$2.99, on sale at.....\$2.77

SPECIAL COUPON VALUE

Regularly \$2.49

MANSFIELD 2" x 2" SLIDE FILE

All metal construction—snap lock—gray hammerhead finish. Holds 750 ready mounts or 300 glass-mounted slides. Index card top, strips of index numbers and twelve metal dividers.

12-05, pp. 35c, on sale at.....\$2.22

SPECIAL COUPON VALUE

Regularly \$17.95

8mm. and 16mm. CINELARGERS

Enlarge individual frames of your 8mm. and 16mm. movies to regular 620 black and white or color negative rollfilm.

23-02 16mm., pp. 27c, on sale at...\$16.66

23-01 8mm., pp. 27c, on sale at...\$16.66

SPECIAL COUPON VALUE

Regularly \$2.59

KIMAC SLIDE PROTECTORS FOR 2"x2" SLIDES

Transparent plastic sleeves with which to cover your 2"x2" slides for safe handling and projection. Box of 100

15-04, pp. 12c, on sale at.....\$2.22

SPECIAL COUPON VALUE

Regularly \$4.79

MANSFIELD "LITTLE GEM" SPLICER for 8mm. & 16mm.

Heavy-duty construction, all steel with die cast base, rubber feet, patented radial scraper.

34-05, pp. 23c, on sale at.....\$4.44

SPECIAL COUPON VALUE

YANKEE SLIDE TRAY FOR REVERE AND WOLLENSAK

A fine quality molded plastic slide tray that holds 36 slides. Our No. 17-04.

One, reg. 98c (pp. 8c), on sale at...\$.88

Three, reg. \$2.59 (pp. 27c), on sale \$2.29

Twelve, reg. \$9.98 (pp. 51c), sale \$8.88

SPECIAL COUPON VALUE

Regularly \$9.99

MANSFIELD MASTER REWINDERS for 8mm. and 16mm. film

Die cast construction, machine cut steel gears, built-in tension brake. Take up to 2000-ft. capacity reels.

32-01, pp. 31c, on sale at.....\$8.88

SPECIAL COUPON VALUE

PUEBLO DWELLERS AND AN APACHE RAID

A thrilling set of 31 brilliantly colored single frame 2"x2" color slides.

Set of 31 "Pueblo Dwellers and an Apache Raid" color slides (pp. 6c) \$1.49

SPECIAL COUPON VALUE

NEW 400-ft. 8mm. SILVER-TIN CANS

Brand new, first quality, bright silvery tinned cans, embossed for rigidity! And the price is but a fraction of the regular.

54-07, six (pp. 31c).....\$1.33

54-07, twelve (pp. 39c).....\$2.22

54-07 twenty-four (pp. 78c).....\$3.99

SPECIAL COUPON VALUE

Regularly \$22.95

35mm. CINELARGER

Permits making black and white, or color, negative enlargements from your 2"x2" color slides. Gives eight 2 1/4" by 2 3/4" negatives to roll of No. 620 film.

23-03, pp. 27c, on sale at.....\$19.99

SPECIAL COUPON VALUE

Regularly \$1.77 each

GENUINE AIREQUIPT 2"x2" SLIDE MAGAZINES

Each, 17-01, pp. 12c.....\$1.66

Six, 17-01, pp. 35c.....\$9.66

SPECIAL COUPON VALUE

Limited Quantity!

PACKAGE OF THREE USED 600-ft. 16mm. REELS

Reels are standard manufacture and all in good used condition.

54-19, pp. 31c.....\$1.69

SPECIAL COUPON VALUE

KODACHROME 50' 16mm. MAGAZINE CAMERA FILM

Including Processing and Direct Return by Duacolor

25-11 Daylight (pp. 18c), reg. \$6.99, on sale at.....\$6.49

25-12 Type A (pp. 18c), reg. \$6.99, on sale at.....\$6.49

SPECIAL COUPON VALUE

PACKAGE OF 24 GOOD USED 100-FT. FILM CANS

Ideal for editing and storage. 54-01, pp. 35c, special at.....99c

SPECIAL COUPON VALUE

8mm. KODACHROME

INCLUDING DIRECT MAIL PROCESSING BY DYNACOLOR

25-ft. double 8mm. roll, daylight (25-05) or tungsten (25-06), pp. 8c per roll, reg. \$3.69, on sale at, each.....\$3.55

SPECIAL COUPON VALUE

ANSCOCHROME 50' 16mm. MAGAZINE CAMERA FILM

Including Processing and Direct Return by Ansco

25-03 Daylight (pp. 18c), reg. \$6.99, on sale at.....\$6.49

25-04 Tungsten (pp. 18c), reg. \$6.99, on sale at.....\$6.49

SPECIAL COUPON VALUE

2"x2" SLIDE JACK POT 50 SLIDES FOR \$1.19

Here's a buy of buys in 2"x2" slides—regular double frame 35mm. type—practically all in color. These slides are tests, mis-mounts, seconds and imperfects—a miscellany, no complete sets.

"Jack Pot" of 50 2"x2" slides, No. 71-01, pp. 6c.....\$1.19

SPECIAL COUPON VALUE

WESTON DIRECT READING EXPOSURE METER MODEL 853 DR

Direct reading in f/stops for use with any still or movie camera. One setting only. Calibrated to ASA standards for film speeds. This model, which carried a list price of \$16.95, has just been discontinued by the manufacturer. List price was \$16.95.

39-08 (pp. 12c), only.....\$7.77

SPECIAL COUPON VALUE

Regularly \$11.95

STANDARD SPIRAL MOUNT 1 1/2-INCH PROJECTION LENS

A fine quality import from Japan, fits such projectors as Ampro, DeVry, Natco, RCA and Vector. Gives picture 50% wider than 2-inch lens at same distance from screen.

28-17, pp. 12c, on sale at.....\$9.99

SPECIAL COUPON VALUE

2"x2" COLOR SLIDES ON BIBLE SUBJECTS

B-17 SAUL B-25 JOSIAH
B-23 ELISHA B-26 ESTHER
B-28 EZEKIEL

Price, each set of about 40 single frame type 2"x2" color slides (pp. 6c).....\$2.77

Any four sets (pp. 15c).....\$9.99

SPECIAL COUPON VALUE

"SURPRISE PACKAGE"

Of one complete reel (250-ft. to 400-ft.) 16mm. sound film. No Abbott and Costello, Woody Woodpecker or Laurel and Hardy, but a lot of interesting, unusual material.

150-05, pp. 14c, reg. \$3.33, special at \$2.99

SPECIAL COUPON VALUE

Limited Supply!

PACKAGE OF THREE USED 1600-ft., 16mm. CANS

These cans are of standard manufacture—all in good used condition.

52-10, pp. 55c \$1.99

SPECIAL COUPON VALUE

Extra Special!

PACKAGE OF THREE USED 1600-ft., 16mm. REELS

These reels are of standard manufacture—all in good used condition.

54-16, pp. 43c \$3.99

SPECIAL COUPON VALUE

GENUINE LEATHER GADGET BAGS made by Service

- 41-08 9 3/4" x 4" x 6 1/2", levant grain leather, rich shade of ginger, adjustable shoulder strap, reg. \$5.95, pp. 27c, on sale at \$5.58
- 41-07 11" x 5 1/4" x 8", levant grain leather, rich shade of ginger, adjustable shoulder strap, reg. \$6.95, pp. 27c, on sale at \$6.66
- 41-06 10 3/4" x 5 3/4" x 9 3/4", levant grain leather, rich shade of ginger, adjustable shoulder strap, reg. \$7.95, pp. 27c, on sale at \$7.77

SPECIAL COUPON VALUE

LOGAN REEL CASES

All metal, baked enamel finish, piano hinge top, nicked latex.

- 33-01 Holds twelve 200-ft. capacity 8mm. or 5-inch diameter magnetic tape reels, pp. 39c, reg. \$2.98, on sale at \$2.66
- 33-02 Holds twelve 400-ft. capacity 8mm. or 7-inch diameter magnetic tape reels, pp. 43c, reg. \$3.79, on sale at \$3.33
- 33-03 Holds twelve 400-ft. capacity 16mm. reels, pp. 55c, reg. \$4.79, on sale at \$4.44

SPECIAL COUPON VALUE

ANSCOCHROME & KODACHROME 35mm. COLOR FILM INCLUDING DIRECT MAIL PROCESSING

- 13-03 20-exp., Super Anscochrome Daylight, pp. 6c, reg. \$3.39, on sale at \$3.11
- 13-08 20-exp., Super Anscochrome Tungsten, pp. 6c, reg. \$3.29, on sale at \$3.11
- 13-01 20-exp., Anscochrome Daylight, pp. 6c, reg. \$2.99, on sale at \$2.77
- 13-04 20-exp., Kodachrome Daylight, pp. 6c, reg. \$2.99, on sale at \$2.77
- 13-05 20-exp., Kodachrome Flash, pp. 6c, reg. \$2.99, on sale at \$2.77

SPECIAL COUPON VALUE

Regularly \$4.95

AIDS POCKET VIEWER

Takes your 50-ft. 8mm. rolls of Kodachrome or B&W film which may be viewed in motion or frame-by-frame. Perfect to carry with you or send to the service man overseas. Not suitable for editing. Uses incidental light, or battery powered light accessory.

37-04, pp. 12c, on sale at \$4.44
37-05, light accessory, pp. 6c \$1.79

SPECIAL COUPON VALUE

CLOSE-OUT! 8mm. MOVIE MAKING BOOKS

Publisher's regular price \$1.75 and \$1.95 each. No choice of title, but selected by us from the following list, each 66c

- (Allow 3c postage per book.)
- 62D01—HOME MOVIE SCRIPTS
- 62D02—HOW TO MAKE VACATION MOVIES
- 62D03—HOW TO DIRECT
- 62D04—HOW TO MAKE 8mm. MOVIES
- 62D05—HOW TO DO HOME MOVIE TRICKS
- 62D06—HOW TO ACT FOR HOME MOVIES
- 62D07—HOW TO ADD SOUND
- 62D10—HOW TO PLAN A MOVIE SCRIPT

SPECIAL COUPON VALUE

Regularly \$32.95

"3V" TRI-VISION PANORAMIC TITLER

Now! SPECIAL EFFECTS MADE EASILY WITH MOST CAMERAS! Title as you shoot with the aid of "3V" lens attachment with its parallax-free viewfinder. You don't waste film for titles—you SUPERIMPOSE! Centering is simple and accurate! Lightweight and easily carried with camera—works with both 8mm. and 16mm.—for both indoor and outdoor titling. The "3V" unit which is a part of the titling kit permits all sorts of superimposed trick shots completely apart from titles.
36-08, pp. 35c, on sale at \$31.11

SPECIAL COUPON VALUE

Limited Supply!

PACKAGE OF THREE USED 800-ft., 16mm. CANS

These cans are of standard manufacture—all in good used condition.

52-11, pp. 39c \$1.69

SPECIAL COUPON VALUE

LOGAN "MAGNA VIEW" ELECTRIC TABLE SLIDE VIEWER

Takes either 2"x2" or 2 3/4"x2 3/4" super slides. Has precision ground optical glass lens with magnification power of 134-times. Lens can be easily removed from outside for cleaning. Offers clear, colorful, undistorted image. Brown hammertone finish. Comes with 6-ft. UL approved cord and plug, on-off switch, easily replaced light bulb.

18-12, (pp. 27c), reg. \$3.99, on sale at \$3.66

SPECIAL COUPON VALUE

2"x2" SINGLE FRAME COLOR SLIDE SPECIAL THREE HOLIDAY SETS

each containing 25 2"x2" S. F. COLOR SLIDES

ARBOR DAY
FLAG DAY
INDEPENDENCE DAY
Each set, pp. 6c...99c All three, pp. 18c...\$2.79

SPECIAL COUPON VALUE

"KING SIZE PRIZE PACKAGE"

Good used two reel (500-ft. to 800-ft.) 16mm. sound films—complete and in generally better than average condition. A variety of unusual subjects—but none in the top popularity groups.

150-06, pp. 19c, reg. \$4.44, special at \$3.99

SPECIAL COUPON VALUE

PREMIER M-2 PROFESSIONAL TITLER

Makes an infinite variety of colorful, interesting titles, with special effects. Has optical bench with fully adjustable camera stand, multiple effects frame, twin reflectors with extension cord and switch, lens holder and supplementary lenses, transparent plastic sheet and alignment guide.

36-03 (not available, you pay transportation on delivery), on sale at \$28.88

SPECIAL COUPON VALUE

Only a few

BRAND NEW G.B.C. PHONETIC TAPE RECORDERS

Record at 3 1/2 and 1 3/4-ips, take 3-inch tape reels, weigh only 10-pounds. Two and a half watts. Cover 75 to 7500-cps at 3 1/4-ips. Complete with mike. List, \$169.50.

59-13, pp. 99c \$66.66

SPECIAL COUPON VALUE

U. S. Navy Surplus!

GENUINE POLAROID GOGGLES

In flexible leather frames. Normal \$2.00 retail value. First quality in every way. Ideal for summer driving, on the beach—for sports wear in bright sun!

70-01, Each (pp. 3c) .19c Dozen (pp. 27c) . \$1.99

SPECIAL COUPON VALUE

This will cost you \$3.00 more at Christmas time

SANTA CLAUS SUIT

Brand new, first quality Santa Claus suit at a wholesale price. Made of red duvetyne—coat, trousers and hat—trimmed in white. Black oilcloth belt and imitation boots. Fringe of white wool sewed on back of hat. White wool mustache and whisker set. Sizes 42-44 supplied—fill up the slack with pillows.

46-02, pp-31c, only \$6.98

SPECIAL COUPON VALUE

Brand new, first quality 35mm. color filmstrip . . .

"ANIMALS IN NATURE"

Contains 39 different full color frames, each picture captioned. It covers three classifications: (1) Hoofed mammals, (2) Flesh eaters and (3) Rodents.

Wild Life filmstrip, regularly \$5.00 (pp. 6c). August-September sale priced at only \$2.49

SPECIAL COUPON VALUE

POWELL BOUNCE LIGHTS

A compact and versatile 4-light unit with four non-breakable ceramic rockers which swivel 90 to 100-degrees in every direction. Each light has a 10-inch handle for proper aiming. Unit has fused plug and handle for cameraman, and includes four photofoods.

29D02, pp. 82c, close-out priced at only \$6.66

SPECIAL COUPON VALUE

Limited Supply!

PACKAGE OF THREE USED 800-ft., 16mm. REELS

These reels are of standard manufacture—all in good used condition.

54-17, pp. 35c \$1.99

SPECIAL COUPON VALUE

2"x2" BLACK & WHITE SLIDE SETS ON WORLD WAR II

Each set contains twenty double frame 35mm. black and white captioned slides.

Price, each set (pp. 6c) 79c
All 12 sets (pp. 27c) \$7.99

- WW1—PEARL HARBOR, JAP ATTACK
- WW4—HOLLANDIA
- WW2—SAIPAN
- WW6—IWO JIMA
- WW8—NORMANDY INVASION
- WW9—INVASION BEACHHEAD
- WW10—PATTON BREAKS OUT
- WW11—INVASION OF SOUTH PACIFIC
- WW12—THE SEVENTH DRIVES NORTH
- WW5—GUAM
- WW3—TARAWA
- WW7—OKINAWA

LOBSTER

BLACKHAWK'S BIGGEST SELECTION OF ONE-OF-A-KIND USED 16mm. SOUND FILMS

(Allow 14c postage for each film of 400-feet or less; 19c postage for each film of 401 to 800-feet; and 24c for each longer film.)

ALL PRINTS COMPLETE AND IN GOOD CONDITION!

- AIRWAYS OF THE FUTURE (325-feet).** A March of Time film which shows the importance of the Air Transport Command in 1942 when war supplies were badly needed in Africa, and how a global network of air routes was built. Includes scenes of training and activities of ATC personnel. \$9.99
- AQUA FROLICS (300-feet).** Unusual water sports are pictured—basketball under water—diving from 300-foot cliffs—water ski champions, and reckless canoeists in wild rapids. \$8.95
- AROUND THE WORLD IN NEW YORK (500-feet).** The "old world" culture and customs of the many national groups in the population of New York City are contrasted with the interests and diversions of the completely assimilated younger generation. \$9.99
- AS OUR BOYHOOD (600-feet).** A story in which education is the star, showing the strides being made in the improvement of schools and teaching techniques available to the Negro youth in the Southern states. \$9.99
- AUTOMOTIVE SERVICE (400-feet).** Gives an overall view of the jobs in this field; opportunities for advancement, pay scales, and training required. \$9.95
- BALZAC (800-feet).** A film biography of the famed French novelist, Honoré de Balzac, (1799-1850), using contemporary pictures, portraits and statues. This film constitutes one of the first attempts to use film technique in the fields of history and literary criticism. \$8.88
- BETLE STUDIES (400-feet).** The ugly beetle becomes an extremely interesting object as camera close-ups and narration show us how nature has equipped beetles for their short lives. \$9.99
- BEFORE THE DOCTOR COMES (850-feet).** Pictorially illustrates the proper procedures for caring for accident victims during vital minutes after an accident occurs and before medical help has arrived. \$14.44
- BROKEN APPOINTMENT (1100-feet).** Material to stimulate discussion on many issues, including marital counseling; supervisory techniques in every health department, and especially useful in nursing education. \$12.22
- CAPERS IN CLAY (300-feet).** Clever effects with skillful fingers and bits of clay. \$7.99
- CAPITAL STORY (700-feet).** Pictures the relationship between industry and science, the functions and activities of the Public Health Service, the duties and responsibilities of a research chemist, and the processes used in chemical analysis. \$5.99
- CEBU (350-feet).** Pictures one of the oldest European settlements in the Orient. Shows imports, interesting landmarks, and products. \$8.88
- CHINA CLAY (350-feet).** Shows the mining, processing and use of china clay in England. Shows the clay being taken from the Trevisco pit in Cornwall, and the many uses of sand, an important by-product of clay. \$5.55
- CLOUDS GO TO WORK (300-feet).** Shows many uses of water, how water's potential energy is transformed into kinetic energy of electricity, water's use in irrigation, and the water supplies of cities and towns. \$9.95
- CUTTING KEYWAYS (600-feet).** How to set up a shaft on the table of the milling machine for cutting a keyway at each end; select the proper cutter; determine correct speed and feed; set for the proper depth and length of cut, and mill keyways to specified dimensions. \$6.99
- FOLKSONG FANTASY (250-feet).** Animated puppets and birds enact the narratives contained in three familiar folk songs, "The Riddle Song", "Who Killed Cock Robin?" and "The Cooper of Fife". \$7.95
- FOLLOW THRU (350-feet).** Experts of the green demonstrate the fundamentals of good golf. Follow slow motion sequences and close-ups of the golfing styles of such notables as Dick Metz, Jimmy Thompson and Horton Smith. \$6.66
- FOR YEARS TO COME (700-feet in color).** Depicts the work of a farmer and his family during a year in which they changed over from the old, straight-row method to modern conservation farming methods. \$14.44
- FRIGID FROLICS (300-feet).** A good program of winter sports. Includes shots of swimming in icy waters and techniques for rescuing persons who have fallen through ice; a demonstration of the popular Scottish game of Curling; pointers on skiing; and pictures of former Olympic champion Jaffe teaching children to ice skate. \$7.95
- FUNDO IN CHILE (500-feet).** Life on one of the great fundos or ranches of South America, including the community of hundreds of workers, their use of modern methods of farming, and the activities of the school and the church. \$9.95
- GOLD TOWN (350-feet).** A camera trip through the town of Kalgoorlie in Western Australia, the principal gold-mining town of the continent. Born in the gold rush of the 1890's, Kalgoorlie is famous for its "Golden Mile", one of the richest areas on earth, and there are many scenes of this fabulous place. \$9.95
- GOVERNMENT IS YOUR BUSINESS (1000-feet).** Arthur Franz stars in this dramatized story of a young man who dared everything to show that corrupt government is due more to the weakness of good people than to the strength of bad politicians. \$19.99
- GRASSHOPPERS (700-feet).** Shows several types of common grasshoppers; various stages in their life cycle, damage caused by them, and measures to control the pests. \$19.95
- HAVANA HOLIDAY (325-feet).** A tour of Havana showing the principle points of interest, among which is the old cathedral where Columbus was first buried. Charm lies in the scenes of many contrasts—the old and the new only a step apart. \$9.95
- HEAVEN SENT (500-feet).** Bosco the Cine Pup in a Cine Puppet show. \$8.88
- HERE IS CHINA (900-feet).** An over-all view of the picturesque nation and its 450 million people, with Clifton Fadiman narrating the sequences. Includes the geography of China, history and customs of the land, people of China, and development and changes of China. \$12.22
- HOT ICE (300-feet).** The development of ice hockey, Canada's game, from playing "shiny" on the old school pond to the intense excitement of professional matches at Madison Square Garden. \$7.95
- HOW TO DRAW CARTOONS NO. 4 (600-feet).** One of the series of "Match Stick in Action" films on how to draw cartoons, and features the steps in drawing animals. \$9.99
- INDUSTRIOUS FINLAND (350-feet).** A pre-war picture of Finland—the lumbering industry, farming and mining. A camera tour of the principal cities of the country. \$9.99
- IT HAPPENED IN IRELAND (400-feet).** An entertaining show by Frank Webb's Puppet "Pixies". \$8.88
- IT MUST BE LOVE (250-feet).** A Terrytoon cartoon. \$6.66
- KINGS OF THE ARCTIC (275-feet).** Sea lions take the spotlight in this film. They are photographed as they battle for mate and home, successfully repelling all challengers—or losing all in a fight-to-the-finish. \$9.99
- LITTLE BANTAM WEIGHT (250-feet).** A Rudolf Ising cartoon. \$7.77
- LITTLE SHOW NO. 531 (500-feet).** A dramatic story concerning a young man who is duped out of a large amount of money by a pretty girl, and the exciting climax when an unavoidable accident finds him with "blood on his hands" and a case for the police. \$9.95
- MACASSAR (300-feet).** Camera impressions of the capital of Celebes, part of the Dutch East Indies empire. \$9.99
- BRYCE—ZION—GRAND CANYON (300-feet).** A visit to Bryce's horseshoe-shaped bowl with its scenic wonders, and a journey on tunneled highways to Zion Canyon and its parade of inspiring and beautiful peaks. A tour of the more familiar Grand Canyon completes the filmed travelogue. \$9.95
- BULLY ROMANCE (250-feet).** A Gandy Goose cartoon. \$6.66
- CALL OF THE WEST (300-feet).** Western "ditties" in this musical program include "Texas Strip", sung by Margie Becker; "There Is No Sunshine", by Spade Cooley and Tex Williams, and "Call of the Canyon" by Alvino Rey's orchestra and the King Sisters. \$7.95
- CARIBBEAN HOLIDAY (300-feet).** A journey to the colorful islands of the West Indies, with special emphasis on leading cities and scenic localities and native songs and dances. \$9.95
- CARROLL GLENN, VIOLINIST (300-feet).** Includes Wieniawski's "Mazurka", Tchaikovsky's "Canzonetta from Concerto" and Hobay's "Hejre Kati". \$6.66
- CASE OF THE MURDER MELODY (425-feet).** A musical composition is instrumental in solving a murder in this story starring John Howard as Stephen Allen, Public Prosecutor. \$5.55
- CASE OF THE SHATTERED MIRROR (425-feet).** Public Prosecutor, Stephen Allen, played by John Howard, finds the solution to a crime in this murder mystery. \$5.55
- CASE OF THE SWARTHY MAN (425-feet).** If you like a mystery, you're certain to enjoy this quarter-hour show in which John Howard stars as Stephen Allen, Public Prosecutor. \$5.55
- CASE OF THE YELLOW TICKET (425-feet).** An exciting mystery show from the files of Stephen Allen, Public Prosecutor. \$5.55
- CELEBES—KOMODO (300-feet).** A visit to two strange islands. See native houses built on stilts; unusual burial grounds and burial customs; giant lizards and other strange animals of the country. \$9.99
- CORAL AND ITS CREATURES (275-feet).** The story of the polyps which build coral reefs, and of the other animals and plants which live in coral. Included in the pictures are the sea anemone, feather star-fish, beche-de-mer, firefish or butterfly carp, cow-fish, spotted catshark, flyfish and other types of tropical sea creatures. \$9.95
- CORONATION OF KING GEORGE VI AND QUEEN ELIZABETH (350-feet).** A historical film record of the inspiring and spectacular coronation ceremonies. \$9.95
- DISTILLATION (450-feet).** The complete story of petroleum distillation. \$14.95
- FIGHT FOR BETTER SCHOOLS (800-feet).** A timely subject, this March of Time film shows how interested citizens like those of Arlington County, Virginia, are able by working together to effect legislation and revitalize the public schools. Also deals with the struggles to improve educational facilities in other localities. \$9.99
- FIGHTING THE FIRE BOMB (500-feet).** Pictures the mechanism and operation of the common incendiary bomb; how to extinguish the bomb and fight resulting fires. \$4.98
- FLYING FEET (350-feet).** Knute Rockne, immortal coach of Notre Dame University, gives several football pointers, including the importance of the shift and skirting the end. Slow motion photography aids in study of the plays, and the film includes a sequence of the famous Red Grange on a touchdown run. \$7.77
- FOLKSONG FANTASY (250-feet).** Animated puppets and birds enact the narratives contained in three familiar folk songs, "The Riddle Song", "Who Killed Cock Robin?" and "The Cooper of Fife". \$7.95
- FOLLOW THRU (350-feet).** Experts of the green demonstrate the fundamentals of good golf. Follow slow motion sequences and close-ups of the golfing styles of such notables as Dick Metz, Jimmy Thompson and Horton Smith. \$6.66
- FOR YEARS TO COME (700-feet in color).** Depicts the work of a farmer and his family during a year in which they changed over from the old, straight-row method to modern conservation farming methods. \$14.44
- FRIGID FROLICS (300-feet).** A good program of winter sports. Includes shots of swimming in icy waters and techniques for rescuing persons who have fallen through ice; a demonstration of the popular Scottish game of Curling; pointers on skiing; and pictures of former Olympic champion Jaffe teaching children to ice skate. \$7.95
- FUNDO IN CHILE (500-feet).** Life on one of the great fundos or ranches of South America, including the community of hundreds of workers, their use of modern methods of farming, and the activities of the school and the church. \$9.95
- GOLD TOWN (350-feet).** A camera trip through the town of Kalgoorlie in Western Australia, the principal gold-mining town of the continent. Born in the gold rush of the 1890's, Kalgoorlie is famous for its "Golden Mile", one of the richest areas on earth, and there are many scenes of this fabulous place. \$9.95
- GOVERNMENT IS YOUR BUSINESS (1000-feet).** Arthur Franz stars in this dramatized story of a young man who dared everything to show that corrupt government is due more to the weakness of good people than to the strength of bad politicians. \$19.99
- GRASSHOPPERS (700-feet).** Shows several types of common grasshoppers; various stages in their life cycle, damage caused by them, and measures to control the pests. \$19.95
- HAVANA HOLIDAY (325-feet).** A tour of Havana showing the principle points of interest, among which is the old cathedral where Columbus was first buried. Charm lies in the scenes of many contrasts—the old and the new only a step apart. \$9.95
- HEAVEN SENT (500-feet).** Bosco the Cine Pup in a Cine Puppet show. \$8.88
- HERE IS CHINA (900-feet).** An over-all view of the picturesque nation and its 450 million people, with Clifton Fadiman narrating the sequences. Includes the geography of China, history and customs of the land, people of China, and development and changes of China. \$12.22
- HOT ICE (300-feet).** The development of ice hockey, Canada's game, from playing "shiny" on the old school pond to the intense excitement of professional matches at Madison Square Garden. \$7.95
- HOW TO DRAW CARTOONS NO. 4 (600-feet).** One of the series of "Match Stick in Action" films on how to draw cartoons, and features the steps in drawing animals. \$9.99
- INDUSTRIOUS FINLAND (350-feet).** A pre-war picture of Finland—the lumbering industry, farming and mining. A camera tour of the principal cities of the country. \$9.99
- IT HAPPENED IN IRELAND (400-feet).** An entertaining show by Frank Webb's Puppet "Pixies". \$8.88
- IT MUST BE LOVE (250-feet).** A Terrytoon cartoon. \$6.66
- KINGS OF THE ARCTIC (275-feet).** Sea lions take the spotlight in this film. They are photographed as they battle for mate and home, successfully repelling all challengers—or losing all in a fight-to-the-finish. \$9.99
- LITTLE BANTAM WEIGHT (250-feet).** A Rudolf Ising cartoon. \$7.77
- LITTLE SHOW NO. 531 (500-feet).** A dramatic story concerning a young man who is duped out of a large amount of money by a pretty girl, and the exciting climax when an unavoidable accident finds him with "blood on his hands" and a case for the police. \$9.95
- MACASSAR (300-feet).** Camera impressions of the capital of Celebes, part of the Dutch East Indies empire. \$9.99
- MAGIC WORDS (350-feet in color).** The magic words, "systematic savings" are described as the key to home ownership and financial security in this film dramatization of one family's benefits from co-operative banking. \$12.22
- MAINTENANCE OF OFFICE MACHINES (1200-feet).** Dirt, dust and carelessness are exposed as the three deadly enemies of office machines. Instructions are given for the care and cleaning of typewriters, dictating machines, adding machines and calculators. \$14.95
- MALAYA (300-feet).** A pleasant picture of life of the Malaya Peninsula, including many scenes of the island of Singapore, one of the world's most important crossroads of shipping lanes. Shows the temples and sacred turtles of the country; visits a rice plantation and Malayan pygmies in their jungle homes, and shots of the strange flowers, fruits and animals of the jungle. \$9.99
- MANITOBA (400-feet).** A colorful picture of Manitoba's attractions—sports facilities, scenic beauties, main cities and industries. From the United States border to northern wilderness, the camera travels across the province, dwelling on typical scenes along the way. \$9.95
- MICKY AND SIMON LEGREE (300-feet).** A Micky Mouse cartoon. \$11.11
- MOUSE TRAPPERS (250-feet).** An Andy Panda cartoon. \$7.77
- MURDER ON MY MIND (400-feet).** An exciting mystery show starring A. F. Shipley and Sylvia Hartman. \$9.95
- NEW ENGLAND HOLIDAY (300-feet).** A travelogue of the shrines and places of historical New England. Also Cape Cod vistas, lobster fishing, surf bathing, and the White Mountains in winter. \$9.95
- NEW WAYS IN FARMING (500-feet).** Depicts such modern agricultural trends as large-scale factory-style farming, with crops scientifically scheduled and cultivated and the farm co-operative. Indicates how the traditionally independent farmer, with the aid of new mechanized equipment, is able to make his farm increasingly prosperous. A March of Time film. \$6.66
- NORTHEASTERN STATES (FIRST EDITION) (300-feet).** Stresses the vast industrial and commercial activities of the northeastern states and describes, by means of map animation, the region's physical character and the origin and distribution of its people. \$14.95
- OBJECTIVE SECURITY (700-feet).** The dramatic story of 300,000 Okinawans who learned about American government from the members of the Civil Affairs team that liberated them from Japanese domination. \$9.99
- OFF THE BEATEN PATH (225-feet).** A potpourri of sports events including a sand-lot version of polo; shots from the national A.A.U. Gymnastic Championship meet in Chicago, and scenes from the world's roughest and fastest rodeo. \$5.95
- ONE WORLD OR NONE (300-feet).** A graphically vivid summary of the development of atomic energy and the atom bomb, stressing the need for world control of atomic energy. Points out that every nation is vulnerable—there is no absolute defense against atomic attack—and that nations must learn to live together peacefully or all face total destruction. \$6.66
- THE PAINTER AND THE POINTER (An Andy Panda cartoon).** \$7.77
- PASSING HOURS (425-feet).** A gay and humorous account of how man, having learned to master time, becomes its frenzied slave. \$9.99
- PHONY CRONIES (500-feet).** A hilarious comedy starring El Brendel. \$18.88
- PLANNING AND LAYING OUT WORK (375-feet).** Jeff Harris, plant supervisor, talks to his son, Jimmy, who has built a boat in the basement too large to go through the door, about the necessity for planning a job in advance; and recounts several illustrative experiences at the plant. \$7.95
- PROEM (350-feet).** A unique film tying together a modern picture of changing cube forms in the picturization of the musical score. \$6.66
- ROMAN CARNIVAL OVERTURE (375-feet).** The complete "Roman Carnival Overture" by Hector Berlioz is presented by the Orchestra du Conservatoire de Paris with Philippe Gaubert directing. \$7.77
- ON TWO WHEELS (500-feet).** In a traffic court run by youngsters, cases are argued and violators of the bicycle riding code are sentenced for their negligence. In each case, the sentence sends the culprit to a competent individual who shows him how to ride safely. \$14.44
- ORIGIN AND SYNTHESIS OF PLASTIC MATERIALS (500-feet).** Shows the organic origin of plastics and the resemblance to natural substances; synthesis of plastics from natural substances; differences between thermo-setting and thermo-plastic materials. \$9.99
- PALE HORSEMAN (700-feet).** A documentary record of the health problems following the wake of war when sick and exhausted people emerge from the wreckage of their civilizations, and of what has been done to prevent the spread of epidemics in liberated countries. \$5.55
- PEACE COMES TO AMERICA (350-feet).** Highlights of the end of World War II in August, 1945, with special emphasis on problems to be met—soldiers to be brought home—others to be healed—and others to be assisted with GI loans and educational aid. \$7.99
- PEAT AND COAL (300-feet).** Deals with the mining and use of peat, and gives a pictorial explanation of how coal is formed. \$7.99
- PEOPLE BORN IN APRIL (225-feet).** One of the "Movie Horoscope Series" in which Zanaimar, India's foremost astrologist, gives an astronomical study of people born in the month of April. \$6.66
- PEOPLE OF THE PONDS (375-feet).** A journey into the crater of an extinct volcano and the weird and bizarre forms of microscopic life which live in a pool at the bottom of the crater. \$9.99
- PERMANENT AGRICULTURE (1100-feet).** A detailed, informative and interesting study of why soil conservation is necessary to continued rural and urban prosperity. \$12.22
- PLAIN INDEXING AND CUTTING A SPUR GEAR (600-feet).** Explains the principle and operation of the dividing head. Its application is shown in the cutting of an eight-pitch gear with thirty-six teeth. \$5.99
- PLAN FOR LIVING (400-feet).** A study of Australia's long range planning for modernization of Sydney and other leading cities which are over-populated and congested with traffic. \$6.99
- PLAY TIME (275-feet).** Boys and girls of scenic Great Britain are shown as they enjoy play time recreations in the natural surroundings of the country in which they live. \$4.99
- PORCELAIN PROTECTED SURFACE WIRING (725-feet).** How to make an electrical entrance to a building; the need for providing fuse protection in circuit; how to install wiring and porcelain fittings; how to support and insulate wires to meet requirements of the National Electrical Code. \$9.99
- PROGRESS REPORT (350-feet).** A British Information film which shows how rubble from razed buildings in war-torn Britain is used to make playgrounds; the various steps in processing magnesite from the sea; and workers and factories of the pottery industry in a move from the city to ideal work buildings and homes in the country. \$4.99
- RAISING SOILERS (350-feet).** Young men of Great Britain are shown in the various processes and training procedures through which they must go to become members of the Royal Navy. \$4.99
- RE-CREATION (1200-feet).** This film shows the beautiful scenery found in the national parks of the nation, proclaiming them as "paradise" for campers in the story of an irritable family which finds peace and relaxation in the out-of-doors. \$22.22
- RED BARBER INTERVIEWS A TENNIS PLAYER (400-feet).** One of the popular quarter-hour television shows with sports-caster, Red Barber, in an interview with the outstanding tennis champion, Billy Talbert. The guest was captain of the Davis Cup team which brought the Davis Cup back to the United States several years ago, and is tennis editor of the magazine, "Sports Illustrated". \$9.99
- RED BARBER INTERVIEWS A BASEBALL PLAYER (400-feet).** Whitey Ford, great left-handed pitcher for the New York Yankees, is interviewed by Red Barber on one of the sports commentator's fifteen-minute television shows. \$9.99
- RED BARBER INTERVIEWS A FOOTBALL PLAYER (400-feet).** Jim Crowley, sports commentator, and one of the University of Notre Dame's famous "Four Horsemen", appears as guest interviewer on the quarter-hour TV show, Red Barber's Corner, to chat informally with Jordan Oliver, football coach at Yale University. \$9.99
- ROAD TO HANGTOWN (350-feet).** This is the story of a road in the Sierra Nevada and of the men who traveled over it in search of gold in '49. \$9.99
- ROUGH FACING, TURNING AND DRILLING ON A VERTICAL TURRET LATHE (1000-feet).** How to center and chuck an aluminum engine casting on the table of the vertical turret lathe; and tool up the vertical head and side head for the machining operations. \$9.99
- SAFE DAY (300-feet).** Deals with safety measures for plants and factories, and through the story of Bill Jones, a workman with an excellent safety record, at home, in traffic and in the factory. The film shows that a good record is based not on luck, but on constant vigilance. \$7.99
- SAILS IN THE WIND (325-feet).** A film story of the century's old science of sailing, with interesting illustrations of fundamentals of wind and design of sails. How sails are fashioned after the wings of birds is amply demonstrated in animation. \$6.66
- SALT OF THE EARTH (350-feet).** Depicts life and activities on the farm, its hardships and compensations, and the importance of the farm and the farmer to civilization. \$7.99
- SAVE THE SOIL (350-feet).** Shows various ways of conserving soil fertility, including terracing, cover-cropping, crop rotation, and the use of fertilizers. \$8.88
- SECOND CHANCE (925-feet).** A romantic drama starring David Niven. \$19.99
- SEMI-AUTOMATIC AND HAND MOLDING OF INTRICATE PARTS (575-feet).** Shows how to mold plastics in complicated shapes. \$9.99
- THE SHAPER (600-feet).** Functions, characteristics, and basic operations of the shaper. \$5.99
- SHEEP SHEARING (500-feet).** How to handle sheep for shearing; shear the sheep and roll and tie the fleece. \$8.88
- SILENT WAR (300-feet).** The story of the war against yellow fever being waged by scientists in the jungles of Colombia. Shows how vaccine is made, dried, frozen and transported by mule, and how the research is making United Nations jungle fighters immune to the dread disease. \$7.77
- SINGAPORE (300-feet).** A film visit to the "Cross Roads of the East". Gives a review of the city's history, and a panoramic tour of the streets, interesting buildings and residential sections. \$9.99
- SITTING RIGHT (300-feet).** The technique of sitting correctly—how to sit down and how to get up. Leg, arm and hand positions are shown. \$9.99
- THE "64" DOLLAR ANSWER (325-feet in color).** The International Harvester Company shows its "64" dollar answer—the Thresher No. 64. Shows the entire machine by diagram and shows how it functions. \$8.88
- SKI REVELS (325-feet).** Ski experts show "how it should be done" in outstanding performances on snow-covered mountain slopes. \$8.88
- SKI THRILLS (350-feet).** Depicts the exhilarating movements, charms and rhythm of this popular and healthful sport amidst the High Sierras. \$8.88
- SNOW FALLS (300-feet).** This is a film on skiing that will provide laughs for the novice at the sport as well as hardened experts who have acquired their skill only after all the bruises and sprains disappeared. \$7.77
- SOIL AND WATER CONSERVATION (300-feet).** Conservation farming methods to protect soil and water resources; contouring, terracing, strip cropping, cover-cropping, rotation, tree and grass planting. \$4.99
- SOUTHEASTERN STATES (300-feet).** Presents an over-all study of the southeastern states region—its people, its agriculture, industry, heritage, and its inter-dependence with other regions. \$9.99
- SOUTHWESTERN STATES (325-feet).** Emphasizes the vastness of the southwest's resources and the implications of its recent industrial and commercial progress. \$9.99
- SPORTS WE SELDOM SEE No. 32 (250-feet).** Several really unique sports attractions feature this film! There are shots of automobile racing up and down a flight of steps in the streets of Prague, Czechoslovakia; bull fighting in the streets of a city in southern France; a really... \$7.77
- SPOT NEWS (300-feet).** The picture opens with a direct recording sequence of dialogue and scenes as a wire photo crew goes out to photograph an airplane taking off from the top of a speeding automobile, and then transmits the photograph back to the newspaper office over a telephone wire. Shows how the current is received back at the newspaper and changed back to light values and printed as a picture. \$9.99
- YOU AND YOUR BICYCLE (350-feet).** Covers all phases of bicycle safety, including maintenance. Shows the necessity for alertness; and a portion of the film shows unsafe practices to avoid, and what will happen if they are followed. \$9.99
- YOU CAN BEAT THE A-BOMB (650-feet).** Demonstrates that your chance of surviving an A-bomb attack depend upon protective measures taken NOW. Stresses types of bomb shelters, building safety, first aid for victims, and how to dispose of contaminated food and clothing. \$9.95
- YOU CAN CHANGE THE WORLD (1200-feet).** The story of the Christopher Movement, and how every person can help to "change the world" by participation in crucial occupations, and by doing his part to help others. Appearing in the film are Eddie "Rochester" Anderson, Jack Benny, Ann Blythe, Bing Crosby, Paul Douglas, Irene Dunne and William Holden. \$29.95
- YOUNG URUGUAY (500-feet).** Uruguay has a low rate of illiteracy, the reason for which is set forth in this film describing the educational system of that country. The excellent system, including rural schools, universities and colleges is described in detail, and the people's recreation, sports and amusements, are shown in their relationship to the educational program. \$9.95
- YOUR CAREER IN AVIATION (350-feet).** Discusses job possibilities in the field including the facts of training and remuneration. How to go about becoming a pilot, a stewardess, a maintenance mechanic. Other important but less known occupations in the industry are described. \$9.99
- YOUR CHILDREN AND YOU (1000-feet).** This film deals with the care of youngsters from the first months to the age of four or five. It realistically portrays the struggles of average imperfect parents and average imperfect children, and suggests practical answers to innumerable problems. \$14.44
- YOUR DRIVING HABITS (500-feet).** The elements of good driving are shown; how to start the engine; use the clutch and shift gears; use brakes; drive on curves in mountainous country; through snow and mud; and how to park a car. \$6.95

Read Before You Order!

POSTAGE CHARGES

All mailable items listed in this Bargain Bulletin will be shipped postage paid and insured for the small additional charges shown in the listings, providing remittance in full accompanies the order.

Some larger and heavier items, because of size and weight, are not mailable and will thus be shipped to you by express or freight; you paying the transportation charges on delivery.

SALES TAX ON SHIPMENTS TO IOWA

Customers ordering films for shipment to points in the State of Iowa must also add 2% for the State Sales Tax.

C. O. D. SHIPMENTS

Except where noted, Blackhawk will gladly make shipments of merchandise on a C.O.D. basis to any point in the United States. However, on C.O.D. shipments, the purchaser pays all transportation charges, insurance and C.O.D. fees, and money order fees, in addition to the cost of the merchandise.

RIGHTS of USE on MOTION PICTURES

None of the motion picture prints offered herein, either new or used, may be used for television or theatrical purposes, as these rights are specifically reserved. All new 16mm. and 8mm. short subject prints (except our Laurel and Hardy comedies, Hymnalogues and Songbooks of the Screen) may be shipped by us to any destination in the world.

SHIPMENTS to CANADA and MEXICO

Customers in Canada and Mexico should add 10% to the prices of all items (including postage charges) which are available for postpaid delivery to them. On non-postpaid items, Canadian and Mexican customers should inquire in advance as to transportation charges unless those charges may be collected on delivery.

FOREIGN COUNTRIES (Other Than To Canada or Mexico)

On small orders that may be shipped by parcel post in a single package, customers in all foreign countries (as well as Canada and Mexico) may have postpaid delivery by adding 10% to the prices of the items making up the shipment (including postage charges) providing the items are within the size and weight limits for parcel post shipments to their country.

Buy Anything Offered By Blackhawk On Convenient Monthly Payments!

Customers in the United States (excluding Alaska, Hawaii and other territories) may now purchase anything listed by Blackhawk on convenient time payments. Furthermore, our convenient add-on payment service is available to those of you already having satisfactory time payment accounts in operation.

TIME PAYMENT ARRANGEMENTS A. Down Payments.

Below are the minimum down payments required based on the total amount of your purchase.

- On orders totaling \$25.00 to \$50.00 ... \$ 5.00
On orders totaling \$50.01 to \$100.00 ... \$10.00
On orders totaling \$100.01 to \$150.00 ... \$15.00
On orders totaling \$150.01 to \$200.00 ... \$20.00
On orders totaling \$200.01 to \$250.00 ... \$25.00
On orders totaling \$250.01 to \$300.00 ... \$30.00
On orders totaling \$300.01 to \$350.00 ... \$35.00

The amount of your time payment charge and the amount of your monthly payment is determined by the unpaid balance remaining after we have deducted your down payment from the total of your purchase.

B. Time Payment Charges.

Time payment charges are based on the unpaid balance remaining after the deduction of your down payment from the total of your purchase. Here they are scheduled:

- On unpaid balances totaling \$25.00 to \$50.00 ... \$ 5.00
On unpaid balances totaling \$50.01 to \$100.00 ... \$10.00
On unpaid balances totaling \$100.01 to \$150.00 ... \$15.00
On unpaid balances totaling \$150.01 to \$200.00 ... \$20.00
On unpaid balances totaling \$200.01 to \$250.00 ... \$25.00
On unpaid balances totaling \$250.01 to \$300.00 ... \$30.00
On unpaid balances totaling \$300.01 to \$350.00 ... \$35.00

C. Monthly Payments.

As is explained above, the size of your monthly payment is based upon the unpaid balance (including the time payment charge) remaining after deducting your payment from the total of your purchase.

- On unpaid balances totaling \$25.00 to \$50.00 ... \$ 5.00
On unpaid balances totaling \$50.01 to \$100.00 ... \$10.00
On unpaid balances totaling \$100.01 to \$150.00 ... \$15.00
On unpaid balances totaling \$150.01 to \$200.00 ... \$20.00
On unpaid balances totaling \$200.01 to \$250.00 ... \$25.00
On unpaid balances totaling \$250.01 to \$300.00 ... \$30.00
On unpaid balances totaling \$300.01 to \$350.00 ... \$35.00

D. Add-On Orders.

We're always glad to add additional purchases to time payment accounts already outstanding. The additional time payment charge will be based on the amount added to the time payment contract.

The amount payable monthly, when an add-on is made, will be based on the total amount still due including the unpaid balance of the original account plus the unpaid balance on the add-on.

E. Our Action.

We've provided this information so that you will know exactly the amount you will owe. However, to help you further, we prepare a time payment schedule for you at the time we ship the merchandise.

PLEASE PRINT YOUR NAME AND ADDRESS!

APPLICATION FOR CREDIT To Open a Monthly Payment Account

SIGN THIS PART AND ANSWER ALL QUESTIONS

Blackhawk Films: I am enclosing \$... as a down payment on the... Monthly Payment price of the goods listed above.

Thirty days after I receive the goods I will pay \$... to Blackhawk Films at its office in Davenport, Iowa, and a similar amount each thirty days thereafter until the total Monthly Payment price is paid.

I submit the following statement to induce you to extend credit on this basis.

Your Signature... WRITE—do not print... Signature of Wife... WRITE—do not print... Street Address... Box... Route...

Answer all questions below to establish credit—All information will be held confidential—Fill in completely to avoid delay!

IF MARRIED, ALL ANSWERS MUST APPLY TO HUSBAND (except where otherwise provided)

Your age? (Parent must sign for minor)... Are you married?... How long have you lived in... What kind of work?... What are your present WEEKLY earnings?... Do you rent? or own home? or mortgage payment?... If with present employer less than one year, how long with former employer?... Weekly Average Other Income \$... From what source?... Wife's Employer... Address... Complete Address... Complete Address... Complete Address... Complete Address...

Add-on Order Form

FOR THOSE WHO ALREADY HAVE AN ACCOUNT WITH US an unpaid balance. The provisions in the original contract and the monthly terms in your catalog apply to this purchase.

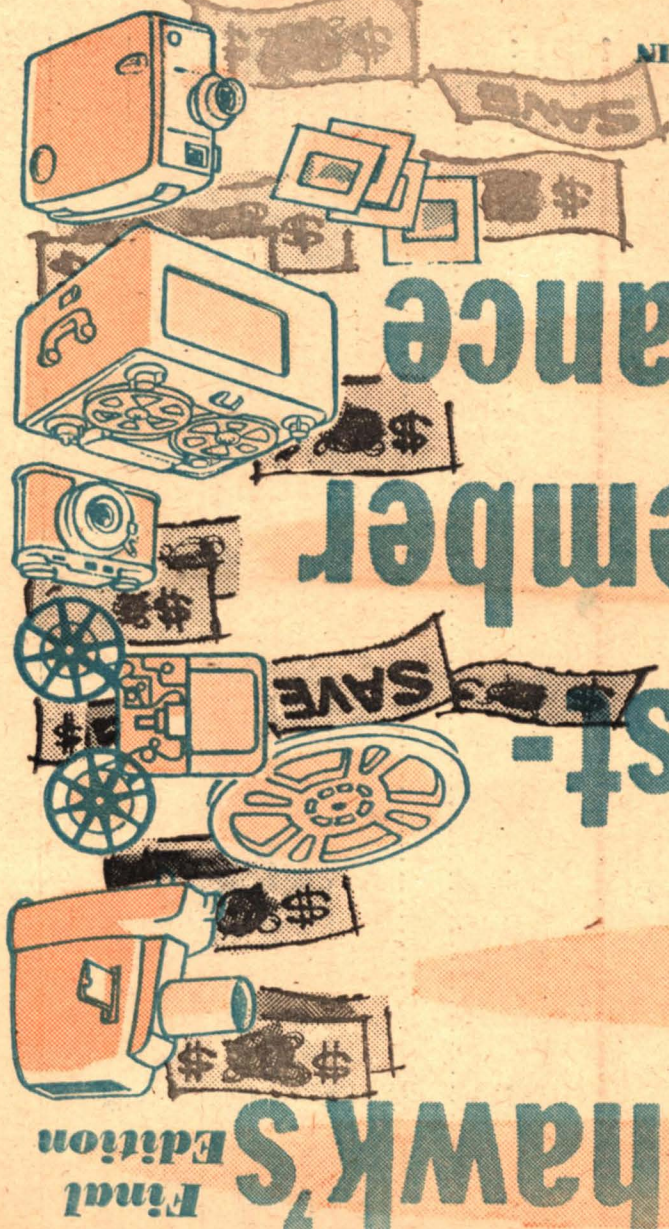
Your Signature Here (WRITE—Do Not Print)... Account Number... Street Address or Route and Box No... City... State... Zone If Any...

Date... Ship to... Street and Number... City... Delivery Zone (if any) State... Remittance Enclosed for \$... Ship C.O.D. I Have a Credit of \$...

DO NOT REMIT IN CURRENCY OR STAMPS—CURRENCY IS SENT AT YOUR RISK—STAMPS ARE NOT ACCEPTABLE RIGHTS OF USE OF ANY MOTION PICTURES DELIVERED ON THIS ORDER ARE LIMITED TO NON-THEATRICAL AND HOME EXHIBITION—THEATRICAL AND TELEVISION RIGHTS ARE SPECIFICALLY RESERVED.

Table with columns: Quan., Blackhawk Number (where one is shown), Title of Film or Name of Item, Do Not Write In This Column, Amount Remitted for Postage, Price Per Film, Set or Package, Total. Includes REMIT 25c HANDLING CHARGE IN ADDITION TO POSTAGE ON ALL ORDERS FOR LESS THAN \$2.50.

Total Remitted for Merchandise and Postage from Previous Order... Amount Due Blackhawk... If Shipped to an Iowa Destination, 2% of Cost of Merchandise to Cover Iowa Retail Sales Tax... Total... Order Blank BLACKHAWK FILMS 1235 W. Fifth St. DAVENPORT, IOWA 89



Blackhawk's Big August-September Clearance Sale!

Final Edition

Rupert B. Kelly
 268 Rowan Dr.
 Berea, Ohio

TO:

B
 1/54
 CU

BULK RATE
 U. S. POSTAGE
PAID
 Davenport, Iowa
 Permit No. 344

Special Purchase!

WESTMINSTER and VANGUARD PRE-RECORDED (STACKED) STEREO TAPE

Brand new, first quality stacked stereo tapes from Westminster and Vanguard for out a few cents more than blank tape. All numbers are on standard 7-inch tape reels. Tapes will be supplied from the following list of titles—but at this price with our relatively shallow stock per title we can allow no choice of titles. On orders for multiples, however, we guarantee not to send duplicate recordings.

Price per tape **\$3.99** plus 23c postage and handling

Our No. 48-14

- LISZT PIANO CONCERTOS, No. 1 in 1 Flat Major, No. 2 in A Major, Edith Faruadi, piano; Vienna State Opera Orchestra
- RIMSKY-KORSAKOFF, SCHEHERAZADE, Vienna State Opera Orchestra
- DVORAK, "NEW WORLD" SYMPHONY, Philharmonic Symphony Orchestra of London
- TCHAIKOVSKY, SYMPHONY No. 6 in B Minor, Op. 74, Philharmonic Symphony Orchestra of London
- FAMOUS WESTMINSTER-SONOTAPE 1956 AUDIO SHOW DEMONSTRATION TAPE
- BEETHOVEN, MOONLIGHT SONATA, PATHETIQUE SONATA, Raymond Lewenthal, piano
- STRAVINSKY, L'Histoire di Soldat, Ars Nova, Robert Mendell, conductor
- TOCCATAS FOR ORGAN, Robert Owen playing the Organ of Christ Church, Bronxville, N. Y.
- LEIBERT TAKES RICHMOND, Dick Leibert at the Mighty Wurlitzer
- CHRISTMAS AT RADIO CITY, Dick Leibert at the Organ
- FESTIVAL MUSIC FOR ORGAN, Robert Owen at the Organ of Christ Church, Bronxville, N. Y.
- BEETHOVEN, Piano Sonata No. 23 in F Minor, Op. 57, Egon Petri, piano
- SOUNDS OF THE SUBWAY
- TCHAIKOVSKY, Quartet No. 1 in D Major, Op. 11, Crestis String Quartet
- BEETHOVEN, Symphony No. 5 in C Minor, Op. 67, Philharmonic Symphony Orchestra of London
- THE PIANO OF BADURKA-SKODA
- WEDDING MUSIC, Robert Locksmith, Stromberg-Carlson Flemish Master Carillon; Robert Owen, Organ of the First Baptist Church, Rochester, N. Y.
- A STEREOGRAPHIC STUDY IN DOUBLE CHORUSES, Masterwork Chorus, Morristown, N. J.
- VIC DICKENSON SEPTET with Ruby Bruff, Guest Star
- TCHAIKOVSKY, Symphony No. 4 in F Minor, Op. 36, Philharmonic Symphony Orchestra of London
- THE DEVIL AND DANIEL WEBSTER, Douglas Moore
- HANDEL, Israel in Egypt, Part II, The Utah Symphony and the combined choruses of The University of Utah
- DEUTSCHMEISTER ON PARADE
- SPIRITUALS, Graham Jackson Choir
- DEUTSCHMEISTER DRUMS AND BRASSES
- FRIML PRESENTS FRIML, Rudolf Friml and the Friml Orchestra

- TEARS OF A GYPSY, Lendvay Kalman and his Gypsy Band
- HEROLD, Zampa Overture, Vienna State Opera Orchestra
- ENESCO, Hungarian Rhapsody No. 1, Vienna State Opera Orchestra
- FRIML PRESENTS FRIML, Vol. 2, Rudolf Friml and the Friml Orchestra
- GALLA: Ritual Dance of Fire, Vienna State Opera Orchestra
- KETELBET, In the Mystic Land of Egypt, Vienna State Opera Orchestra
- SWING LOW, SWEET CHARIOT, Graham Jackson Choir
- SMETANA, The Moldau, Vienna State Opera Orchestra
- SAINT-SAENS, Carnival of the Animals, Vienna State Opera Orchestra, Garry Moore, Narrator
- TCHAIKOVSKY, Piano Concerto No. 1, Jacob Lateiner, piano, Vienna State Opera Orchestra
- PROKOFIEFF, Peter and the Wolf, Philharmonic Symphony Orchestra of London, Garry Moore, Narrator
- HANDEL, Israel in Egypt, Part I, The Utah Symphony and the combined choruses of The University of Utah
- GERSHWIN, Piano Concerto in F, Reid Nibley, Piano, The Utah Symphony

MORE DISCONTINUED BLACKHAWK SLIDE SETS AT CLOSE-OUT PRICES

These 2"x2" color slide sets are being discontinued and are available only to the extent of our stock presently on hand. This is your opportunity to select a number of unusual items—at substantial savings from the former prices!

- ALLOW 6c PER SET FOR POSTAGE AND HANDLING
- Set 19—AUTUMN IN WYOMING (10 color slides, was \$1.89), now \$1.09
 - Set 28—RAILROADS OF THE OLD DOMINION (27 color slides, was \$3.98), now \$2.79
 - Set 62—ARCHES NATIONAL MONUMENT (12 color slides, was \$1.89), now \$1.29
 - Set 95—ARCHES NATIONAL MONUMENT (8 color slides, was \$1.49), now \$.99
 - Set 97—DEATH VALLEY (8 color slides, was \$1.49), now \$.99
 - Set 99—YOSEMITE NATIONAL PARK (8 color slides, was \$1.49), now \$.99
 - Set 100—ZION NATIONAL PARK (8 color slides, was \$1.49), now \$.99
 - Set 101—SONG OF INDIA (22 color slides, was \$3.49), now \$2.29
 - Set 122—BEHIND THE FOOTLIGHTS—THEATRICAL POSTERS OF THE GASLIGHT ERA (16 color slides, was \$2.49), now \$1.69
 - Set 121—THE WICKED STAGE—THEATRICAL POSTERS OF THE GAY NINETIES (13 color slides, was \$1.98), now \$1.39
 - Set 124—DRESS UNIFORMS OF THE U. S. ARMY, 1902-1907 (14 color slides, was \$2.19), now \$1.49
 - Set 127—EDELSTEIN HILL ON THE SANTA FE (13 color slides, was \$1.98), now \$1.39
 - Set 131—SNAKES OF THE SOUTHEAST (8 color slides, was \$1.49), now \$.99
 - Set 132—SNAKES OF THE SOUTHWEST (8 color slides, was \$1.49), now \$.99

Special Close-out Purchase!

12-inch, 33 1/2-rpm, LP
RECORDS

BLACKHAWK 3 for \$6.98
 PRICED AT (Postage: 35c extra)

REPLICA RECORDS

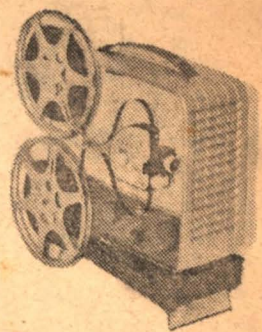
Replica Records is withdrawing some of their LP items from the market for issuance in new combinations. These brand new, first quality pressings are, therefore, being closed-out at less than 50% of their normal selling price. Regularly \$4.98.

Take your choice of the following selections, in any combination you wish:

- 61-05—MATINEE with Arsene Siegal at the Oriental Theatre Pipe Organ in Chicago
- 61-06—THIS IS MELGARD with AJ Melgard at the Wurlitzer Pipe Organ
- 61-07—GORILLA IN THE GARDEN with Byron Melcher at the Wurlitzer Pipe Organ
- 61-09—JAZZ with the Paul Severson Septet
- 61-10—THE SAX LIFE OF DICK KRESS
- 61-11—NO "SAINTS" with Frautz Jackson and the Original All-Stars
- 61-12—THE EXHIBIT, Jazz compositions and arrangements of Sture Swenson
- 61-13—2 OF A KIME, Warren Kime plays and sings
- 61-14—THE ED HIGGINS TRIO, Piano, bass and drums
- 61-15—THE HI-FIMONICS, Three harmonicas plus bass fiddle and guitar
- 61-16—KALANI AND HIS PARADISE ISLANDERS, A Polynesian venture
- 61-17—MUSICAL GADGETS, Old time coin-operated music devices

And, the following 12-inch LP recordings of other companies, being dropped from our line, and being closed-out by us at the prices listed below:

- 61-25—BURLESQUE UNCENSORED (12-inch, Cook), was \$4.98, pp. 23c, now \$3.98
- 61-26—CAFE CONTINENTAL (12-inch, Cook), was \$4.98, pp. 23c, now \$3.98
- 61-31—CIRCUS CALLOPE MUSIC (10-inch, Cook), was \$4.00, pp. 23c, now \$2.98
- 61-34—ECHOES OF THE STORM and CRAZY QUILT (12-inch, Audiophile), was \$5.95, pp. 23c, now \$4.95
- 61-37—FOORT POPS with REGINALD FOORT AT THE WURLITZER (10-inch, Cook), was \$4.00, pp. 23c, now \$2.98
- 61-45—MERRY-GO-ROUND MUSIC (12-inch, Dauntless), was \$5.95, pp. 23c, now \$4.95
- 61-48—NICKELODEON AND CALLOPE (12-inch, Cook), was \$4.98, pp. 23c, now \$3.98
- 61-50—PIPE ORGAN IN THE MOSQUE with REGINALD FOORT AT THE WURLITZER (12-inch, Cook), was \$4.98, pp. 23c, now \$3.98
- 61-64—VOICE OF THE SEA (12-inch, Cook), was \$4.98, pp. 23c, now \$3.98



BROWNIE "500" 8mm. PROJECTOR

This new Brownie "500" has a new high-lumen projection lamp for the greatest brilliance—shows your color movies up to 5-foot wide. A single control gives you forward projection, "stills", reverse action, and power rewinding. The Brownie "500" is permanently lubricated at the factory—you'll never need to oil it! Has "big picture" f1.6 lens, built-in preview screen, self cover. Takes 400-ft. film reels for half-hour shows. Manufacturer's list, \$79.50.

30-23, pp. 83c, Blackhawk priced at **\$64.95** only



KEYSTONE K-109 8mm. PROJECTOR

The home movie projector with everything. A true precision instrument, with new precision focusing knob that assures razor-sharpness of focus, greatest picture clarity ever . . . quickly, easily. In addition, contains built-in splicer, Lite-o-Matic room light switch and editor-viewer, making it a complete, self-contained movie workshop. The Magna-Scope lens, coated and color-corrected, fills 40-inch screen at only 13-feet. Has geared reel arms, rheostat speed control, self-locking tilt mechanism, reversing switch, rapid automatic rewind, 750-watt projection lamp, takes 400-ft. reel, comes complete with carrying case. Not available. Keystone Regal K-109D 8mm. Magna-Scope Projector, manufacturer's list price, \$174.50, our No. 30-07, Blackhawk's price **\$114.44**