

**BLACKHAWK'S NEW WESTERN
HOTTEST THING ON FILM!**

Wow! Even our fondest expectations were exceeded last month by sales of the first film in our new Railroad Series—THE SUPER CHIEF. Demand exceeded that for any item we have offered — either in 16mm. sound or 8mm. silent. And, some of our good customers have had prints long enough to write such words of praise as:

"Better than films costing twice as much!"

"One of the most entertaining films I've ever seen!"

"The Super Chief really travels — and so does your film. More action than a Western."

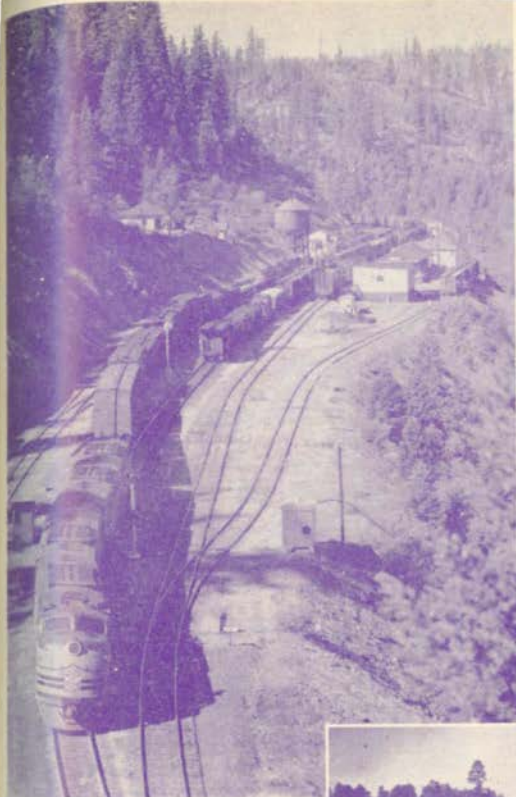
So, it is with particular pleasure that we announce this month the second film in our railroad series—

**WESTERN PACIFIC
FAST FREIGHT**

Now, if you have any idea that a freight train isn't in the running with a streamliner as glamorous as THE SUPER CHIEF — take a look at WESTERN PACIFIC FAST FREIGHT. It's the run of No. 62, The Fruitblock, from Oakland, Calif. to Salt Lake City — all the way behind a 6,000 horsepower Electro-Motive diesel locomotive. Much of the footage was shot in the Feather River Canyon where the W.P. tackles the Sierra Nevadas — and much of the footage shot in the canyon was photographed from a helicopter. Mighty spectacular stuff it is, too.

One extremely interesting sequence shows the working of Centralized Traffic Control, the modern train dispatching system that permits a man at one control panel to direct trains over a 400 to 500 mile length of main line. It shows how the Fruitblock, and the W.P.'s Vista-Doma streamliner, THE CALIFORNIA ZEPHYR meet and pass on the single track main line, and a siding, without either train stopping. It's a whiz of a film, and priced like wholesale. Order yours today.

16 SDN 45B14 16mm. sound version, about 300 feet	\$11.95
8 SLM 45B14 8mm. silent version, about 150 feet	\$2.98



If you don't already own

The
SUPER CHIEF

order it, too! Either 16mm. sound or 8mm. silent.

THE SUPER CHIEF covers the 39¾ hour streamlined journey from Chicago to Los Angeles of the Santa Fe's newly equipped streamliner. It shows the luxury accommodations of the modern sleeping cars, the Pleasure Dome car with its private dining room, the dining car proper, the observation. And it shows the scenic New Mexico - Arizona country through which the Santa Fe travels. The train is shown in detail, both inside and out, and there are a number of swell shots at speed across Kansas and Colorado.

And the price? Like wholesale!

16 SDN 45B9 16mm. sound version, about 300 feet	\$11.95
8 SLM 45B9 8mm. silent version, about 150 feet	\$2.98



USC School
of Cinematic Arts
Hugh M. Hines Motion Picture Archive

BLACKHAWK FILMS INC. catalog 21a **DAVENPORT, IOWA**
EFFECTIVE UNTIL JULY 1, 1952

16mm. SOUND SUBJECTS

We have included in this listing of used films, a number of listings of brand new prints on which we have only one or two prints of each title. New prints are indicated by the letters SDN in the code numbers; used prints are shown by the letters SDU.

We usually have only a few used prints of a title - sometimes only one. This means that within two or three weeks after the mailing of this catalog, more and more of these used titles will be sold out. Keep this in mind when you order. Order early, and, in justice to yourself, give us an alternate list of titles. We'll never send an alternate unless your choices are already out of stock. But remember, we can't sell what we don't have - and the used prints we offer are in great demand.

This section was the last part of the catalog to be printed. It was off the press only one or two days before the general mailing of the catalog was begun. At the time it went to press, prints of all the subjects listed were in stock ready for shipment. Normally, within two or three weeks after mailing, 50% or more of the titles will have been sold.

As to the length of 16mm. films - cartoons average about 250 feet to a reel, other non-reels run 300 to 350 feet. Two-reels usually contain about 650 feet and longer subjects normally average not less than 300 feet to a reel. All films of one reel length and over are supplied on reels.

Features

Look at the good listing of features we have this month! It's the best selection we've been able to offer in a long time - so if you are particularly interested in acquiring feature titles, better give this listing your special attention.

- | | |
|---|--------|
| SDU 1826 ABRAHAM LINCOLN (F), Walter Huston, D. W. Griffith..... | 505.95 |
| SDU 18316 ALICE IN WONDERLAND (F), Ruth Gilbert, Commonwealth..... | 105.50 |
| SDU 22140 ALONG THE SMOGDOWN TRAIL (F), Art Davis, P.R.C..... | 675.95 |
| SDU 18318 ANYTHING FOR A THRILL (F), Frankie Davis, Ambassador..... | 325.95 |
| SDU 2871 ARIZONA DAYS (F), Tex Ritter, Grand National..... | 375.95 |
| SDU 18380 BABY FACE MORGAN (F), Mary Carlisle, Richard Cromwell, Hubert Armstrong, P.R.C..... | 375.95 |
| SDU 28312 BILLY THE KID'S SMOKING GUN (F), Buster Crabbe, Al St. John, P.R.C..... | 375.95 |
| SDU 18254 BLACK DOG, THE (F), Nan Gray, Donald Woods, Crime Club..... | 145.95 |
| SDU 28249 BOMB GUNS (F), Jess Maynard, Kent Gibson, Monogram..... | 325.95 |
| SDU 28275 BORDER BADMEN (F), Buster Crabbe, Al St. John, P.R.C..... | 325.95 |
| SDU 28384 BORDER GUNS (F), Bill Cody, Avon..... | 325.95 |
| SDU 18180 BOSS FORDMAN (F), Henry Armetta, Iris Meredith, Pictorial..... | 335.95 |
| SDU 18310 BOSS OF BIG TOWN, THE (F), Henry Armetta, Iris Meredith, John Litel, P.R.C..... | 345.95 |
| SDU 28186 BUZZY AND THE PHANTOM PINTO (F), Buzzy Henry, Zimbo..... | 325.95 |
| SDU 28396 CALL OF THE PRAIRIE (F), William Boyd, Paramount..... | 335.95 |
| SDU 18283 CITY OF SILENT MEN (F), with Frank Albertson, Joe Lang, P.R.C..... | 375.95 |
| SDU 28331 CODE OF THE FEARLENS (F), Fred Scott, Signatum..... | 325.95 |
| SDU 18225 CONDEMNED TO LIVE (F), Ralph Morgan, Maxine Deyn, Inevitable..... | 335.95 |
| SDU 18185 THE CONTENDER (F), Buster Crabbe, Arline Judge, Pictorial..... | 345.95 |
| SDU 2858 CRASHIN' THRU (F), James Newill, Critchman..... | 335.95 |
| SDU 18314 CROWN OF THORNS (F), Warner Crane, Kinemacolor..... | 355.95 |
| SDU 2865 DANGER AHEAD (F), James Newill, Critchman..... | 335.95 |
| SDU 18255 DANGER ON THE AIR (F), with Nan Gray, Donald Woods, Crime Club..... | 345.95 |
| SDU 28365 DEAD OR ALIVE (F), Tex Ritter, Dase O'Brien, P.R.C..... | 325.95 |
| SDU 28383 DESERT PHANTOM (F), Johnny Mack Brown, Supreme..... | 325.95 |
| SDU 18189 DOWN MISSOURI WAY (F), Martha O'Driscoll and John Carradine, Pictorial..... | 355.95 |
| SDU 18281 DUMMY TROUBLE (F), with Ralph Byrd, Esther Muir, Harry Laeger, P. R. C..... | 375.95 |
| SDU 28186 DUKE (F), Johnnie Walker, Lasso, Nager, P.R.C..... | 325.95 |
| SDU 28351 FIGHTING VALLEY (F), with Dase O'Brien and Jim Newill, P.R.C..... | 325.95 |
| SDU 28387 FLAMING LEAD (F), Jess Maynard, Colony..... | 325.95 |
| SDU 28395 FRONTIER CRUSADERS (F), Tim McCoy, P.R.C..... | 325.95 |
| SDU 28281 FRONTIER OUTLAWS (F), Buster Crabbe, Al St. John, P.R.C..... | 325.95 |
| SDU 28377 FRONTIER TOWN (F), Tex Ritter, Grand National..... | 325.95 |
| SDU 18281 GHOST AND THE GUEST, THE (F), Florence Rice, James Dunn, Crime Club..... | 345.95 |
| SDU 28386 GHOST MINE (F), George Houston, Pictorial..... | 325.95 |
| SDU 28316 GHOST OF HIDDEN VALLEY (F), Buster Crabbe, Al St. John, P.R.C..... | 325.95 |
| SDU 18133 GHOSTS ON THE LODGE (F), with East Side Kid, Monogram..... | 345.95 |
| SDU 18284 THE GIRL FROM MONTERREY (F), Armita and Edgar Key, Pictorial..... | 335.95 |
| SDU 28387 GUN GIRT (F), Jack Perrin, Atlantic..... | 375.95 |
| SDU 28390 GUNSMOKE (F), Buck Coburn, Willie Kent..... | 375.95 |
| SDU 28288 HAMJANTED RANCH (F), John King, David Sharpe, Max Terner, Monogram..... | 375.95 |
| SDU 28273 HEADIN' FOR THE RIO GRANDE (F), Tex Ritter, Grand National..... | 375.95 |
| SDU 18318 HEROES OF THE ALAMO (F), Earl Rudjins, Bruce Warren, Columbia..... | 345.95 |
| SDU 18302 HIGH SCHOOL GIRL (F), Cecilia Parker, Helen Mackellar, Tay..... | 335.95 |
| SDU 18322 HIS BROTHER'S GHOST (F), Buster Crabbe, Al St. John, P.R.C..... | 325.95 |
| SDU 28274 HITTING THE TRAIL (F), Tex Ritter, Grand National..... | 325.95 |
| SDU 28287 HOLLYWOOD AND VINE (F), Jimmy Ellison, Pictorial..... | 335.95 |
| SDU 18281 HOOSIER SCHOOLBOY, THE (F), with Mickey Rooney, Monogram..... | 345.95 |
| SDU 18213 THE HOOBSTER PIKE (F), Roger Pryor, Judy Taylor, Pictorial..... | 345.95 |
| SDU 2808 KID'S LAST RIDE, THE (F), The Range Busters, Monogram..... | 325.95 |
| SDU 28355 KID RIDES AGAIN, THE (F), Buster Crabbe, Al St. John, Pictorial..... | 375.95 |
| SDU 18210 LADY IN THE DEATH HOUSE (F), Joan Parker, Lively..... | 375.95 |
| SDU 28318 LIGHTNING BILL CARSON (F), Tim McCoy, Puritan..... | 375.95 |
| SDU 28215 LIGHTNING CARSON RIDES AGAIN (F), Tim McCoy, Puritan..... | 375.95 |
| SDU 28306 LONE RIDER IN CHEYENNE (F), George Houston, Al St. John, P.R.C..... | 375.95 |
| SDU 28381 MAN FROM HELL, THE (F), with Bob Russell, Willis..... | 375.95 |
| SDU 28282 MILDRED (F), Bette Davis, Fred Stone, Spectrum..... | 375.95 |
| SDU 28187 MEN OF THE PLAINS (F), Rex Bell, Colony..... | 375.95 |
| SDU 18257 MISS V FROM MOSCOW (F), with Lela Lusk, Mad..... | 375.95 |
| SDU 28111 ME, WISE GUY (F), East Side Kid, Monogram..... | 375.95 |
| SDU 2869 MYSTER OF THE YUKON (F), James Newill, Critchman..... | 375.95 |
| SDU 28275 MYSTERY OF THE HOODED HORSEMEN (F), Tex Ritter, National..... | 375.95 |
| SDU 18216 MYSTIC CIRCLE MURDER (F), Betty Compton, Max Nozdil, Regal..... | 375.95 |
| SDU 28291 NAVAJO RIDES (F), Bob Steele, P.R.C..... | 375.95 |
| SDU 18284 NATION APLANE (F), with Lila Lee, Earl Nathan, Fr..... | 375.95 |
| SDU 18185 NEARLY EIGHTEN (F), Gale Storm, Bill Henry, Rich Monogram..... | 375.95 |
| SDN 18313 OLIVER TWIST (F), Dickie Moore, Irving Pichel, Daria..... | 375.95 |
| SDU 28283 PRAIRIE BUSTLERS (F), with Buster Crabbe and Al St. John, P.R.C..... | 375.95 |
| SDU 28310 RAIDERS OF THE WEST (F), Art Davis, P.R.C..... | 375.95 |
| SDU 28388 RAWHIDE ROMANCE (F), Buffalo Bill, Jr., Superior..... | 375.95 |
| SDU 18383 RECLAM FELLOWS (F), Carl 'Archie' Walker, Harry Billy, Lee, P.R.C..... | 375.95 |
| SDU 2851 RENFREW OF THE ROYAL MOUNTED (F), James Grand National..... | 375.95 |
| SDU 18389 RICH RELATIONS (F), Robert Farrow, Frances Grant, Ben Ton, Imperial..... | 375.95 |
| SDU 28277 RIDER OF THE ROCKIES (F), Tex Ritter, Grand National..... | 375.95 |
| SDU 28282 RIDIN' FOR THE PLAINS (F), Fred Stone, Spectrum..... | 375.95 |
| SDU 28287 RIDIN' THE TRAIL (F), Fred Scott, Signatum..... | 375.95 |
| SDU 18353 ROGUE'S TAVERN, THE (F), Wallace Ford, Barbara Pelford, Puritan..... | 375.95 |
| SDU 18286 SAGEBRUSH FAMILY TRAILS WEST (F), Bobby Clark, Monogram..... | 375.95 |
| SDU 18120 SARONG GIFT (F), with Ann Cora, Tim and Charlene Monogram..... | 375.95 |
| SDU 18216 SECRET INVESTIGATOR (F), Marjorie Bonville, Charles Ivy, Pictorial..... | 375.95 |
| SDU 18173 SILENT WITNESS (F), with Frank Albertson, Evelyn Keyes, Monogram..... | 375.95 |
| SDU 28277 SING, COWBOY, SING (F), Tex Ritter, Grand National..... | 375.95 |
| SDU 28183 SINGING COWGIRL, THE (F), Dorothy Page, Grand National..... | 375.95 |
| SDU 28255 SIX-GUN GOSPEL (F), Johnny Mack Brown, Raymond..... | 375.95 |
| SDU 28257 SIX-GUN MAN (F), Bob Steele and Bud Taylor, P.R.C..... | 375.95 |
| SDU 18175 SMART GUY (F), Rick Vallie, Veda Ann Borg, Monogram..... | 375.95 |
| SDU 18310 SOCIETY FEVER (F), Luis Wilson, Lloyd Hughes, Grand National..... | 375.95 |
| SDU 18176 SPY TRAIN (F), Richard Taylor, Catherine Craig, Monogram..... | 375.95 |
| SDU 28148 STORMY TRAILS (F), Rex Bell, Colony..... | 375.95 |
| SDU 28217 STRAIGHT SHOOTER (F), Tim McCoy, Puritan..... | 375.95 |
| SDU 18286 SWEETHEART OF THE NAVY (F), Eric Linden, Cecilia Grand National..... | 375.95 |
| SDU 28257 TEXAS KID, THE (F), Johnny Mack Brown, Raymond..... | 375.95 |
| SDU 28391 TEXAS MANHUNT (F), Art Davis, P.R.C..... | 375.95 |
| SDU 28285 TEXAS TO BATAAN (F), with John King, David Sharpe, Terrence, Monogram..... | 375.95 |
| SDU 18285 THE TOWN WENT WILD (F), Freddie Bartholomew and Lyden, Pictorial..... | 375.95 |
| SDU 28289 TOWNER RIVER FEUD (F), The Range Busters, Monogram..... | 375.95 |
| SDU 28310 TUMBLER TENDERS (F), John Prasad, Dynamite the horse, title the dog, Empire..... | 375.95 |
| SDU 28350 TONTO KID, THE (F), with Rex Bell, Rosalind..... | 375.95 |
| SDU 28235 TRAITOR, THE (F), Tim McCoy, Puritan..... | 375.95 |
| SDU 18185 TRIGGER FINGERS (F), Tim McCoy, Pristina..... | 375.95 |
| SDU 28280 TROUBLE IN TEXAS (F), Tex Ritter, Grand National..... | 375.95 |
| SDU 28267 TWO FISTED JUSTICE (F), with John King, David Sharpe, Terrence, Monogram..... | 375.95 |
| SDU 18213 UNKNOWN GUEST, THE (F), Victor Jory, Veda Ann Borg, Monogram..... | 375.95 |
| SDU 182 VALLEY OF WANTED MEN (F), Frankie Darro, Ambassador..... | 375.95 |
| SDU 28289 WAGON TRAILS (F), Harry Curry, Ajax..... | 375.95 |
| SDU 28184 WATER RUSTLERS (F), Dorothy Page, Grand National..... | 375.95 |
| SDU 18257 WESTLAND CASE, THE (F), with Preston Foster, Frank Crane Club..... | 375.95 |
| SDU 28286 WEST OF PINTO BASIN (F), The Range Busters, Monogram..... | 375.95 |
| SDU 28271 WILD HORSE BUSTLERS (F), with Dase O'Brien and John King, Monogram..... | 375.95 |
| SDU 18317 WINGS OVER AFRICA (F), Joan Gardner, Ivo Colin, Mer..... | 375.95 |

Features with Colored Cast
 M. Hefferling's "The Range Busters"

Serials

SDU 482	YOUNG EAGLES (12 chapters), Romance Productions	\$49.95
SDU 489	ALL-AMERICAN CO-ED—Trailer (50'), Frances Langford, Johnny Brown, Hal Roach	\$2.90
SDU 493	ARIZONA STAGE COACH—Trailer (50'), The Range Busters, Manogram	\$2.90
SDU 494	BLAZING GUNS—Trailer (50'), Ken Maynard, Manogram	\$2.90
SDU 498	CALABOOSE—Trailer (50'), Jimmy Repert, Noah Berry, Jr., Hal Roach	\$2.90
SDU 499	CRIP OF THE FLYING U—Trailer (50'), Johnny Mack Brown, Universal	\$2.90
SDU 500	GINDERELLA SWINGS IT—Trailer (50'), Guy Kibbee, RKO	\$2.90
SDU 506	CODE OF THE LAWLESS—Trailer (50'), Kirby Grant, Universal	\$2.90
SDU 507	COURAGEOUS DR. CHRISTIAN, THE—Trailer (50'), Jess Hancock, RKO	\$2.90
SDU 508	CRIME, INC.—Trailer (50'), Lee Corlie, Martha Tilton, P.R.C.	\$2.90
SDU 511	DOWN MISSOURI WAY—Trailer (50'), Martha O'Driscoll, John Cassaday, Pictorial	\$2.90
SDU 519	DUDES ARE PRETTY PEOPLE—Trailer (50'), Jimmy Rogers, Noah Berry, Jr., Hal Roach	\$2.90
SDU 527	FALL IN—Trailer (50'), William Tracy, Joe Sawyer, Hal Roach	\$2.90
SDU 528	LYING WITH MUSIC—Trailer (50'), Marjorie Woodworth, George Ciolek, Hal Roach	\$2.90
SDU 532	GANGSTERS OF THE FRONTIER—Trailer (50'), Tex Ritter, Dave O'Brien, P.R.C.	\$2.90
SDU 533	GHOSTS ON THE LOOSE—Trailer (50'), East Side Kids, Manogram	\$2.90
SDU 535	GHOST TOWN RENEGADES—Trailer (50'), Lark LaRue, Al St. John, P.R.C.	\$2.90
SDU 539	GUNS OF THE LAW—Trailer (50'), James Newill, Dave O'Brien, P.R.C.	\$2.90
SDU 547	GUNSMOKE—Trailer (50'), Nick Stuart, Standard	\$2.90
SDU 553	GUNSMOKE MEKA—Trailer (50'), James Newill, Dave O'Brien, P.R.C.	\$2.90
SDU 555	THE HAUNTED RANCH—Trailer (50'), Ray Corrigan, John King, Max Terhune, Manogram	\$2.90
SDU 556	HAYFODD—Trailer (50'), William Tracy, Joe Sawyer, Hal Roach	\$2.90
SDU 557	HOLLYWOOD AND VINE—Trailer (50'), Jimmy Ellison, Pictorial	\$2.90
SDU 570	LAW COMES TO TEXAS, THE—Trailer (50'), "Wild Bill" Elliott, Columbia	\$2.90
SDU 582	L.F.L. ABNER—Trailer (50'), Granville Owen, Martha O'Driscoll, RKO	\$2.90
SDU 585	MCGUIRES FROM BROOKLYN—Trailer (50'), William Tracy, Hal Roach	\$2.90
SDU 587	MAN WHO LOST HIMSELF, THE—Trailer (50'), Brian Aherne, Kay Francis, Universal	\$2.90
SDU 589	MISS POLLY—Trailer (50'), Zasu Pitts, Slim Summerville, Hal Roach	\$2.90
SDU 594	NIAGARA FALLS—Trailer (50'), Marjorie Woodworth, Zasu Pitts, Slim Summerville, Hal Roach	\$2.90
SDU 595	OATH OF VENGEANCE—Trailer (50'), Buster Crabbe, Al St. John, P.R.C.	\$2.90
SDU 598	OUTLAW ROUNDUP—Trailer (50'), James Newill, Dave O'Brien, P.R.C.	\$2.90
SDU 599	PINKO BANDIT—Trailer (50'), James Newill, Dave O'Brien, P.R.C.	\$2.90
SDU 602	PIONEER JUSTICE—Trailer (50'), Lark LaRue, Al St. John, P.R.C.	\$2.90
SDU 603	PIONEERS OF THE FRONTIER—Trailer (50'), "Wild Bill" Elliott, Columbia	\$2.90
SDU 605	PRAIRIE CHICKENS—Trailer (50'), Jimmy Rogers, Noah Berry, Jr., Hal Roach	\$2.90
SDU 606	PRIDE OF THE TURF—Trailer (50'), Guy Kibbee, RKO	\$2.90
SDU 607	RAIDERS OF THE BORDER—Trailer (50'), Johnny Mack Brown, Manogram	\$2.90
SDU 608	RECLAR FELLERS—Trailer (50'), Carl "Alfalfa" Switzer, Renee Aton, Billy Lee, P.R.C.	\$2.90
SDU 609	REVENGE OF THE ZOMBIES—Trailer (50'), John Cassaday, Gale Storm, Manogram	\$2.90
SDU 610	RUSTLERS HIDEOUT—Trailer (50'), Buster Crabbe, Al St. John, P.R.C.	\$2.90
SDU 612	SADDLE MOUNTAIN ROUNDUP—Trailer (50'), The Range Busters, Manogram	\$2.90
SDU 616	SCARING GIRL—Trailer (50'), Ann Corrie, Manogram	\$2.90
SDU 618	SCATTERGOOD SURVIVES A MURDER—Trailer (50'), Guy Kibbee, RKO	\$2.90
SDU 619	SCENTS OF THE WASTELANDS—Trailer (50'), William Boyd, Paramount	\$2.90
SDU 627	SING, COWBOY, SING—Trailer (50'), Tex Ritter, Grand National	\$2.90
SDU 638	SIX GUN MAN—Trailer (50'), Bob Ettore, Syd Sawyer, P.R.C.	\$2.90
SDU 637	SONG OF THE RANGE—Trailer (50'), Jimmy Wakely, Dennis Navy, Manogram	\$2.90
SDU 647	SOUTH OF DIXIE—Trailer (50'), Anne Wynne, David Bruce, Universal	\$2.90
SDU 642	SMART GUY—Trailer (50'), Rick Vallin, Veda Ann Bar, Manogram	\$2.90
SDU 649	TAMING OF THE WEST—Trailer (50'), "Wild Bill" Elliott, Columbia	\$2.90
SDU 650	TANKS A MILLION—Trailer (50'), William Tracy, James Gleason, Hal Roach	\$2.90
SDU 651	TAXI MISTER—Trailer (50'), William Bendix, Grace Bradley, Hal Roach	\$2.90
SDU 652	TREX RIDES WITH THE BOY SCOUTS—Trailer (50'), Tex Ritter, Grand National	\$2.90
SDU 653	TEXAS KID, THE—Trailer (50'), Johnny Mack Brown, Manogram	\$2.90
SDU 655	TEXAS TO BATAAN—Trailer (50'), Ray Corrigan, John King, Max Terhune, Manogram	\$2.90
SDU 656	THUNDER RIVER FUND—Trailer (50'), The Range Busters, Republic	\$2.90

Pre-view Trailers

SDU 659	TRAIL RIDERS—Trailer (50'), Ray Corrigan, John King, Max Terhune, Manogram	\$2.90
SDU 660	TWO FITTED JUSTICE—Trailer (50'), John King, David Sherer, Max Terhune, Manogram	\$2.90
SDU 655	UNDERGROUND RUSTLERS—Trailer (50'), The Range Busters, Manogram	\$2.90
SDU 656	UNKNOWN GUEST, THE—Trailer (50'), Victory Jory, Veda Ann Gray, Manogram	\$2.90
SDU 654	VALLEY OF VENGEANCE—Trailer (50'), Buster Crabbe, Al St. John, P.R.C.	\$2.90
SDU 652	WILD COUNTRY—Trailer (50'), Eddie Dean, Renee Aton, P.R.C.	\$2.90
SDU 658	WYKES ANY—Trailer (50'), William Tracy, Joe Sawyer, Hal Roach	\$2.90

Cartoons

SDU 5815	BARBER OF SEVILLE (1 reel), Wandy Woodpecker, Castle	\$7.95
SDU 5817	BARKY AND BAVILLE (1 reel), Curton Pictorial	\$6.95
SDU 5864	BIG FIGHT, THE (1 reel), Kiko the Kangaroo, Curton, Castle	\$6.95
SDU 5852	BIG GAME HUNT (1 reel), Farmer Al Falls, Curton, Castle	\$6.95
SDU 5853	CALICO DRAGON, THE (1 reel), Pictorial	\$6.95
SDU 5863	CHINESE NIGHTINGALE (1 reel), Pictorial	\$6.95
SDU 5864	CHOLLY (1 reel), Pictorial	\$6.95
SDU 5870	CIRCUS CAPERS (1 reel), Puddy the Pup, Castle	\$6.95
SDU 5872	CIRCUS ROMANCE (1 reel), Asses' Fabls, Library Films	\$6.95
SDU 5877	COO GOO THE MAGICIAN (1 reel), Fito the Frog, Post	\$6.95
SDU 5881	COD RUSTLER CASE, THE (1 reel), Fito the Frog, Official	\$6.95
SDU 5839	DICK WHITTINGTON'S CAT (1 reel), Fairy Tale Curton, Castle	\$6.95
SDU 5894	DOWN IN THE DEEP (1 reel), Puddy the Pup, Castle	\$6.95
SDU 5896	DUMB LIKE A FOX (1 reel), Curton, Official	\$6.95
SDU 5899	ELIZA ON ICE (1 reel), Mighty Mouse, Castle	\$6.95
SDU 5825	FISH FRY (1 reel), Andy Panda, Castle	\$6.95
SDU 5830	FOXY FOX (1 reel), Kiko the Kangaroo, Official	\$6.95
SDU 5856	FUTURITY (1 reel), Fido the Cat, Bino, Official	\$6.95
SDU 5810	GULLIBLE CANARY, THE (1 reel), Official	\$6.95
SDU 5814	HAPPY HODGES (1 reel), Dick and Larry, Official	\$6.95
SDU 5871	HITCH-HIKERS, THE (1 reel), Gandy Goose, Castle	\$6.95
SDU 5824	HOLLAND DAVY (1 reel), Terrytoon, Castle	\$6.95
SDU 5812	HOME TOWN OLYMPICS (1 reel), Terrytoon, Castle	\$6.95
SDU 5877	HOWE WANTED (1 reel), Puddy the Pup, Castle	\$6.95
SDU 5832	IT HAPPENED TO CRUDE (1 reel), Official	\$6.95
SDU 5893	JAIL BIRDS (1 reel), Fido the Cat, Bino, Official	\$6.95
SDU 5898	JEKYL AND HYDE CAT (1 reel), Mighty Mouse, Castle	\$6.95
SDU 5894	KUKE BO JAMBOREE (1 reel), Walter Lantz, Castle	\$6.95
SDU 5823	LITTLE BANTAM WEIGHT, THE (1 reel), Pictorial	\$6.95
SDU 5828	LITTLE BO BOSKO AND THE CANNIBALS (1 reel), Harmon-Holroyd, Films	\$6.95
SDU 5843	MEATLESS TUESDAY (1 reel), Andy Panda, Castle	\$6.95
SDU 5862	MICKEY'S EXCITING PICNIC (100'), Micky Mouse, Hollywood	\$2.90
SDU 5859	MICKEY PLAYS SANTA CLAUS (1 reel), Micky Mouse, Hollywood	\$2.90
SDU 5879	MUTTY FINE CABIN (1 reel), Andy Panda, Castle	\$6.95
SDU 5882	ONE SHOT (1 reel), Fido the Cat, Bino, Official	\$6.95
SDU 5871	OLD DOG TRY (1 reel), Farmer Al Falls, Castle	\$6.95
SDU 5829	PANDORA'S BOX (1 reel), Mighty Mouse, Castle	\$6.95
SDU 5830	PANTOY PANIC (1 reel), Wandy Woodpecker, Castle	\$6.95
SDU 5836	PICNIC (1 reel), Pictorial	\$6.95
SDU 5832	PUNFISHION MAN, THE (1 reel), Fairy Tale Curton, Castle	\$6.95
SDU 5833	RABBLIN' MATCH, THE (1 reel), Amos 'n' Andy, Official	\$6.95
SDU 5825	RED HOT SHY/TAM (1 reel), Kiko the Kangaroo, Castle	\$6.95
SDU 5831	RHIN HOOB HOOB AGAIN (1 reel), Micky Mouse, Official	\$6.95
SDU 5832	ROBINSON CRUSOE MICKEY (1 reel), Micky Mouse, Hollywood	\$2.90
SDU 5834	STEAMLINED DONKEY, THE (1 reel), Official	\$6.95
SDU 5839	TOYLAND ADVENTURE (1 reel), Official	\$6.95
SDU 5840	TOYLAND BROADCAST, A (1 reel), Pictorial	\$6.95
SDU 5803	TROLEY ANDY (1 reel), Commonwealth	\$6.95
SDU 5823	WILD AND WOODY WEST (1 reel), Official	\$6.95
SDU 5823	WILD WEST DAZE (1 reel), Terrytoon, Castle	\$6.95
SDU 5826	WILLOWOOD'S MAGIC HAT (1 reel), Official	\$6.95
SDU 5873	BASKETBALL THRILLS OF 1950 (1 reel), Official	\$3.95
SDU 39849	BIG FISH (1 reel), Castle	\$7.95
SDU 39873	BIG LEAGUES (1 reel), Pictorial	\$7.95
SDU 39884	BARRELS ON ICE (1 reel), Castle	\$7.95
SDU 39847	DEVLIL DRIVERS (1 reel), Pictorial	\$7.95
SDU 39853	FLYING FEATHERS (1 reel), Pictorial	\$7.95
SDU 39851	FOOTBALL PARADE OF 1950 (1 reel), Castle	\$7.95
SDU 39858	ICE CAPERS (1 reel), Official	\$7.95
SDU 398125	KNOCKOUT THRILLS (1 reel), Castle	\$7.95
SDU 398158	OFFENSIVE FOOTBALL (1 reel), Official, Various attack methods	\$4.90
SDU 39876	SHARK ON THE LINE (1 reel), Sterling	\$9.95
SDU 39831	SNOW FUN (1 reel), Pictorial	\$7.95
SDU 39827	SNOW SPEED (1 reel), Castle	\$7.95
SDU 39857	SPLITS SPAN AND SINKS (1 reel), Official	\$7.95
SDU 398113	THIS WEEK IN AMERICAN ARTS (1 reel), Film Studies of Chicago	\$6.95
SDU 398116	THIS WEEK IN SPORTS, No. 12 (1 reel), Film Studies of Chicago	\$6.95
SDU 398160	TOP VIEWS IN SPORTS, Vol. 1, No. 17 (1 reel), All-American \$4.90	\$4.90
SDU 398161	TOP VIEWS IN SPORTS, Vol. 1, No. 24 (1 reel), All-American \$4.90	\$4.90
SDU 398162	TOP VIEWS IN SPORTS, Vol. 2, No. 58 (1 reel), All-American \$4.90	\$4.90
SDU 39818	TOUCHDOWN THRILLS OF 1950 (1 reel), Official	\$3.90
SDU 39810	TOUCHDOWN THRILLS OF 1950 (1 reel), Official	\$3.90
SDU 398146	TRUCK MEET THRILLS (1 reel), Castle	\$7.95
SDU 398107	UNDERWATER (1 reel), Pictorial	\$7.95
SDU 3188	WRESTLING FOLLIES (2 reels), Major Sport Films	\$13.95

Sports

Amateur Arts

Always more movies for your money at "Sixteen's Super Market"

Travels

- SDU 238271 AMERICA'S HIGHSPTS (1 reel), Castle \$9.95
- SDU 2381 AMERICA'S WONDERSPOTS (1 reel), Castle \$9.95
- SDU 2382 BALI (1 reel), Castle \$9.95
- SDN 25224 BALI THE ENCHANTED ISLE (1 reel), Pictorial \$12.95
- SDU 2382 CALIFORNIA PICTURE BOOK (1 reel), Castle \$9.95
- SDU 25212 COLOMBIA (1 reel), G.I.A.A. \$7.95
- SDU 3837 CZECHOSLOVAKIA (2 reels), March of Time \$19.95
- SDU 2684 FUNDO IN CHILE (2 reels), G.I.A.A. Ranch life in Chile \$14.95
- SDU 23816 GLACIER NATIONAL PARK (1 reel), Castle \$9.95
- SDU 25222 HAWAII (1 reel), Castle (2 reels) \$9.95
- SDU 51813 ONE DAY IN SOVIET RUSSIA (2 reels), Brandon, Written and narrated by Quentin Reynolds, It gives a complete picture of life in the Soviet Union \$29.95
- SDU 26834 PERILOUS PARADISE (2 reels), Official, Lily in Zamboanga \$19.95
- SDU 25223 RAFFLES 'N' RUBBER (Singapore) (1 reel), Post \$9.95
- SDU 25227 THE WITH ASIATIC FLEET (1 reel), Tour of Chinese cities \$4.95

Westerns

- SDU 4588 BORDER LAW (1 reel), Castle, Old time western \$9.95
- SDU 5181 BORDER OUTLAW (2 reels), with Buster Crabbe, At St. John, Library Film \$19.95
- SDU 5088 CODE OF COURAGE (1 reel), with Johnny Mack Brown, Castle \$9.95
- SDU 50843 COWBOY JUSTICE (1 reel), with Red Cameron, Castle \$9.95
- SDU 50824 LAWLESS FRONTIER (1 reel), with Johnny Mack Brown, Castle \$9.95
- SDU 5187 RAWHIDE BUCKARDOS (2 reels), with Dase O'Brien, Jim Newill, Library Film \$19.95
- SDU 5188 BUSTLERS OF HIDDEN VALLEY (2 reels), with Buster Crabbe, At St. John, Library Film \$19.95
- SDU 50842 TEXAN TRAIL TREACHERY (1 reel), with Red Cameron, Castle \$9.95
- SDU 50823 WEST OF LARAMIE (1 reel), with Tex Williams, Castle \$9.95
- SDU 50819 WESTERN HONOR (1 reel), with Kirby Gray, Castle \$9.95

Animals

- SDU 33832 ALLIGATOR THRILLS (1 reel), Official \$9.95
- SDU 33832 CHIMP, THE COWBOY (1 reel), Castle \$9.95
- SDU 33818 KILLERS OF THE INSECT WORLD (1 reel), with Pictorial \$9.95
- SDU 33820 LION-TIGER FIGHT (1 reel), Castle \$9.95
- SDU 33834 STRAY LAMB, THE (1 reel), Official \$9.95
- SDU 33825 THREE LITTLE BRUNS IN THE WOODS (1 reel), Castle \$9.95
- SDU 33830 WILD ELEPHANT ROUNDUP (1 reel), Castle \$9.95
- SDU 33832 ZOD'S WHO (1 reel), Official \$9.95

Comedies

- SDU 119226 BAD MEDICINE (2 reels), with Gene Austin, RKO \$19.95
- SDU 10830 BOB'S BUSY DAY (1 reel), with Bob Hope, Comedy House \$7.95
- SDU 11827 CALLING ALL DOCTORS (2 reels), with Charlie Chan, Official \$19.95
- SDU 11827 CHAMPION, THE (1 reel), with Charlie Chaplin, Official \$9.95
- SDU 118233 DORGONE (2 reels), with James Finlayson, Muriel Evans, Nu-Art \$19.95
- SDU 11828 GOOD LUCK BEST WINNER (2 reels), with the Plakens Sisters, Astor \$19.95
- SDU 11826 GROOM AND BORED (2 reels), with Johnny Downs, Official \$19.95
- SDU 118230 HOLDING THE BAG (2 reels), with East and Dumka, Educational \$19.95
- SDU 118223 HONKEY DINKS (2 reels), with Hal Rosson's Famous Kids, Official \$19.95
- SDU 118230 HUNTER PAINS (2 reels), with Dorothy Granger, Coral Tervis, Grady Suttles, Nu-Art \$19.95
- SDU 11821 HURRY, HURRY (1 reel), with W. C. Fields, Castle \$9.95
- SDU 11836 KOO KOO KORRESPONDENCE SCHOOL (2 reels), with Jefferson Masterson, Official \$19.95
- SDU 10820 MICKEY'S WILD ADVENTURE (1 reel), with Mickey Rooney, Home Pictures \$9.95
- SDU 10828 OH! MY ACHIN' TOOTH (1 reel), with Abbott and Costello, Official \$9.95
- SDU 10825 OYSTERS AND MUSCLE (1 reel), with Abbott and Costello, Castle \$9.95
- SDU 10831 PINCH ME PLEASE (1 reel), with Abbott and Costello, Official \$9.95
- SDU 10832 POOCH, THE (2 reels), with the Famous Kids, Official \$19.95
- SDU 10832 RIOT ON ICE (1 reel), with Abbott and Costello, Castle \$9.95
- SDU 108132 SMART WAY, THE (2 reels), with Willie Howard, Official \$19.95
- SDU 118231 STUPOR-VISOR, THE (2 reels), with Jack Norton, Nu-Art \$19.95
- SDU 118165 TEACHER'S BEAU (2 reels), with the Famous Kids, Official \$19.95
- SDU 118191 WRONG MISS WRIGHT (2 reels), with Charlie Chase, Official \$19.95

Drama

- SDU 7082 BULLET ON WHEELS (1 reel), with Johnny Sands, Official \$9.95
- SDU 7084 DANNY BOY (1 reel), with Robert "Bobby" Henry, Official \$9.95
- SDU 7085 EMPEROR SODOM (1 reel), Academy, The straitjacket who tries to trade who lost his mind and regarded himself as Emperor United States \$9.95
- SDU 11935 GLOVE SLINGERS (2 reels), with Brook Berry, Jr., Official \$9.95
- SDU 7082 HARRY FOR EVIL (1 reel), Admiral, A modern story with Italian music \$9.95
- SDU 3481 LEAD US NOT INTO TEMPTATION (1 reel), Admiral, A story with religious music \$9.95
- SDU 8328 MARK TWAIN (1 reel), Academy, Life of the great humorist \$9.95
- SDU 9182 PRODIGAL FATHER, THE (1 reel), Admiral, A modern story with religious lesson \$9.95

Miscellaneous

- SDU 6488 ANZACS IN OVERALLS (4 reels), The story of Australia in World War II as the main Allied base in the Southwest Pacific \$19.95
- SDU 5318 ATOMIC BOMB (1947), Redwood Films, The explosion at Nagasaki \$9.95
- SDU 5314 BRAZIL GETS THE NEWS (1 reel), G.I.A.A. Newspaper at work in Brazil \$9.95
- SDU 7082 CASE OF THE MISSING TELEPHONE (2 reels), American phone and Telegraph, Problems of providing telephone service in war \$9.95
- SDU 5383 DOVER (1 reel), B.I.S. Edward R. Murrow interviews a ship British agent at the end of the third year of war. The film shows the change of mood from a people at bay to a nation preparing to take offensive \$9.95
- SDU 7818 FARMER'S TELEPHONE (2 reels), American Telephone and Graph, Explains what is being done to expand and improve farm phone service \$9.95
- SDU 5638 FASHION MEANS BUSINESS (2 reels), March of Time \$9.95
- SDU 5638 FIGHT FOR BETTER SCHOOLS, THE (2 reels), March of Time \$9.95
- SDU 6184 P.M. COMMUNIQUE No. 11 (2 reels), Armament products Pittsburgh; Battle of Chosin Kory; Naval attack on Saipan; Bombardment equipment in captured Ito; progress in Normandy and desolat captured areas. U.S. Army \$9.95
- SDU 8562 GOLD AND MAN (1 reel), Academy, The lure of gold ancient civilizations to modern miners \$9.95
- SDU 8683 GRACIAS AMIGOS (2 reels), G.I.A.A. The contribution of American countries in the winning of World War II \$9.95
- SDU 7482 HURRICANE'S CHALLENGE, A (2 reels), American Telephone and Telegraph, The destruction of the hurricane of 1933 in the Northeast how the telephone services met the emergency \$9.95
- SDU 789 NEW VOICE FOR MR. X, A (2 reels), American Telephone and Telegraph, How one man learned correct telephone habits and steps \$9.95
- SDU 4084 PRINCESS AND THE DRAGON, THE (1 reel), Fairy Sterling \$9.95
- SDU 5687 PROBLEM DRINKERS (2 reels), March of Time \$9.95
- SDU 6208 THE ROAD TO PARIS (1 reel), B.I.S. The campaign from Moscow to Paris \$9.95
- SDU 5672 SCHOOLS TO THE SOUTH (2 reels), Pictures the various types of schools operating in Latin American regions \$9.95
- SDU 4083 THE GREAT TEST OF STURGEY SPENCER (1 reel), Movie News, Pin-up girl \$9.95
- SDU 8686 SOVIET SCHOOL CHILD (2 reels), Education in the U.S. from nursery through high school, B.I.S. \$9.95
- SDU 6184 SPECIAL DELIVERY—JAPAN (2 reels), War Department, of various types of shells in the war against Japan \$9.95
- SDU 8682 TARGET LIGHTS (2 reels), Office of Civilian Defense, How to shelter you \$9.95
- SDU 6208 TRUCKS OF MAPLE STREET (2 reels), OGD, The Plan" of Civilian Defense in operation \$9.95
- SDN 3215 TRUMAN'S INAUGURATION (1 reel), Castle \$9.95
- SDU 5518 THE TWO-WAY STREET (1 reel), O.W.S. The story of land narrated by Charles Winesler \$9.95
- SDU 4882 UNDERWATER BALLET (1947), with Neil Shipley, Movie News \$9.95
- SDU 5518 VISIT OF KING GEORGE VI AND QUEEN ELIZABETH (1 reel), Paramount \$9.95
- SDU 6882 WELCOME SOLDIER (2 reels), N. F. O. Highlights British basic plans of the Canadian Government for returned service personnel \$9.95
- SDU 5621 WHEN ASIA SPEAKS (2 reels), N.F.O., Made during the stages of World War II, this film summarizes the things that are in our race, religions, languages—its raw materials—what it is to the world \$9.95
- SDU 6882 WINNING YOUR WINGS (2 reels), Army Air Force, Lt. Snow explains the requirements and work of the A.A.F. during World War II \$9.95
- SDU 10124 YOUNG URUGUAY (2 reels), Shows the young people of U. at home, play and school. Emphasizes progressive steps being made in culture. As O. I. A. film \$9.95



WESTERN SONGS

with Jerry Cooper, Spade Cooley and his Orchestra and Red River Dave

Three top Western tunes sung by two top singers — and played by Western orchestra — Jerry Cooper and his Orchestra come through the very catchy MY CHICKASHAW GIRL — and Red River Dave down San Antonio way sings all about THE DUDE COWBOY song about this Blackhawk bargain — another one AT LESS WHOLESALE. New 1-reel prints regularly sell for \$19.75. At Blackhawk Bargain, Western Songs (10-SDN 158763) is only \$

Concert Films

SDU 182054	ALFRED CORTOT, Pianist, Red Two (1 reel), playing "The Gipsy's Dance" by Debussy, Part II, Hamburg.	\$12.95
SDU 182055	ALFRED CORTOT AND FIELD (1 reel), Duo-pianists, Pictorial.	\$7.95
SDU 182056	ARTHUR TOSCANINI (3 reels), G.W.L. Verdi's "Rigoletto," National performed by symphony orchestra and chorus under Toscanini's direction.	\$14.95
SDU 182057	BARBER OF SEVILLE (13 reels), with narration and titles in Spanish. Official. An abridgement of Rossini's opera with the original cast.	\$39.95
SDU 182058	JAKOB SIMPEL, Baritone (1 reel), containing Two Kludis. Official \$14.95	
SDU 182059	KEYBOARD CONCERT No. Three (1 reel), Pictorial. Piano trios playing Trios by Beethoven, Chopin and G. Minor by Bachmanoff and Flight of the Gullible Trio by Rimsky-Korsakoff.	\$9.95
SDU 182060	METROPOLITAN STRING QUARTETTE—FOLK SONGS (1 reel), Pictorial.	\$12.95

100 "Soundies"

SDU 182061	ACQUARDE-DE-ME (1 reel), Caridad Garcia, Pictorial.	\$2.00
SDU 182062	AMOR (100'), Will Bradley's Song, Caridad Garcia, Castle.	\$2.50
SDU 182063	AVA LANK (100'), Rex Kliney, Official.	\$2.50
SDU 182064	ANVIL CHORUS (100'), Al Deaneau, Pictorial.	\$2.50
SDU 182065	AT A GYPSY CAMPFIRE (100'), Claudia Carroll, Castle.	\$2.50
SDU 182066	AT YOUR SERVICE (100'), Marie Newsells, Official.	\$2.50
SDU 182067	BARALU (100'), Dolores Mora, R.C.M.	\$2.00
SDU 182068	BARNYARD BOUNCE (100'), Will Bradley, Official.	\$2.50
SDU 182069	BY THE LIGHT OF THE SILVER MOON (100'), The Dining Castle.	\$2.00
SDU 182070	CAISSONS GO ROLLING ALONG (100'), O.W.I. Field Artillery Song sung with background of graphic scenes of Field Artillery in action.	\$2.50
SDU 182071	CATERPILLAR HUFFLE (100'), Johnny Long, Pictorial.	\$2.50
SDU 182072	CHART OF THE JUNGLE (100'), Larry Clifton, Pictorial.	\$2.50
SDU 182073	CHOP STICKS (100'), Jeanine Long, Pictorial.	\$2.50
SDU 182074	COCK-VEY NAVY (100'), Loni Miletich, Pictorial.	\$2.50
SDU 182075	COURT ME IN (100'), Claude Barshoff, Official.	\$2.50
SDU 182076	CRAZY SONG (100'), Duca Sherwin, Hollywood Film.	\$2.50
SDU 182077	DANCING - N A HAREM (100'), Ralph Peters, Marie Newsells.	\$2.50
SDU 182078	DEEP PURPLE (100'), Larry Clifton, Pictorial.	\$2.50
SDU 182079	DELILAH (100'), Jack Beckman, Jean Barthelmeau, Official.	\$2.50
SDU 182080	DING-A-LAY-D (100'), The Carnival Circus, Castle.	\$2.50
SDU 182081	IT'S A LITTLE LITTLE PONY (100'), The Wagon Train, Castle.	\$2.50
SDU 182082	A LATIN FROM STATER ISLAND (100'), with Alceira and His Guitar, Official.	\$2.50
SDU 182083	HILLBILLY GRAND OPERA (100'), Cindy Walker, Zeke Casares, Official.	\$2.50
SDU 182084	HOLLYWOOD KNIGHTS (100'), with Warner Jackson, Marie Newsells.	\$2.00
SDU 182085	HOW COME YOU DO ME LIKE YOU DO (100'), Will Bradley and His Orchestra, Castle.	\$2.50
SDU 182086	I WISH I LIVED IN MY CRADLE (100'), Art Dixon, Pictorial.	\$2.50
SDU 182087	INCA AILUNT (100'), Loni Miletich, Pictorial.	\$2.50
SDU 182088	IN AN EIGHTEENTH CENTURY DRAWING ROOM (100'), Duke Schaefer and His Swingsters, Castle.	\$2.50
SDU 182089	IN THE CITY OF TOWN (100'), Jeanine Long, Pictorial.	\$2.50
SDU 182090	IT WAS WONDERFUL THEN (100'), Bob Hannon, Castle.	\$2.50
SDU 182091	IT'S A GREAT DAY FOR THE IRISH (100'), Gus Van, Castle.	\$2.50
SDU 182092	JIM (100'), with Gertrude Nissen, Official.	\$2.50
SDU 182093	KISSES TO YOU (100'), Gilbert Foy, Official.	\$2.50
SDU 182094	LA COMPASSA (100'), Maya's Pan-American Orchestra, Castle.	\$2.50
SDU 182095	LET ME OFF UPTOWN (100'), Loni Miletich, Official.	\$2.50
SDU 182096	LITTLE GRAY HOME IN THE WEST (100'), Michael Bartlett, Castle.	\$2.50
SDU 182097	LONESOME ROAD (100'), Al Deaneau, Pictorial.	\$2.50
SDU 182098	LOVE IS A LOT OF TALK (100'), Marie Newsells.	\$2.50
SDU 182099	LOVE TURNS WINTER INTO SPRING (100'), Martha Tilton, Official.	\$2.50
SDU 182100	LYDIA (100'), Rudy Valle, Official.	\$2.50
SDU 182101	MAN THAT COMES (100'), Zerk and Zerkie, Marie Newsells.	\$2.50
SDU 182102	MAN THAT DOES AROUND THE (100'), Marie Newsells.	\$2.50
SDU 182103	MARIA ELENA (100'), Jeanine Long, Pictorial.	\$2.50
SDU 182104	MISS YOU (100'), The Four Paiks, Castle.	\$2.50
SDU 182105	MOONLIGHT BECOMES YOU (100'), Eddy Howard, Official.	\$2.50
SDU 182106	MOONLIGHT MASQUERADE (100'), James Newell, Castle.	\$2.50
SDU 182107	MRS. YANKEE DOODLE (100'), Virginia Meyer and The Four Merry Maids, Official.	\$2.50
SDU 182108	THE MUSIC SHOP (100'), Robinson and His Violin, Official.	\$2.50
SDU 182109	MY BUDDY (100'), Larry Clifton, Pictorial.	\$2.50
SDU 182110	NEITHER WATER A LILY WITH WINE (100'), June Burnette, Pictorial.	\$2.50
SDU 182111	NIGHTINGALE SANG IN BERKELEY SQUARE, A (100') with Tamara and Del Galera's Orchestra, Castle.	\$2.50
SDU 182112	NOTHING BUT ROMANCE (100'), Dick Dennis and Veele Yerm, Pictorial.	\$1.50
SDU 182113	PASS THE BISCUITS, MIRANDY (100'), Sophie Kinski, Official.	\$2.50
SDU 182114	PLAYMATES (100'), with Sophie Kinski, Marie Newsells.	\$2.50
SDU 182115	PAYANNE (100'), Duke Schaefer and His Swingsters, Castle.	\$2.50
SDU 182116	YOU LITTLE FOOT RIGHT OUT (100'), Loni Star Gwynne, Official.	\$2.50
SDU 182117	RHUMBA NEW YORK (100'), Caridad Garcia, Pictorial.	\$2.50
SDU 182118	RIND KIND OF GIRL THE (100'), Marie Newsells.	\$2.50
SDU 182119	SAID OLD BIRDY (100'), Del Galera's Orchestra, Official.	\$2.50
SDU 182120	SAY BY BY (100'), with Herbie Kay and His Orchestra, Castle.	\$2.50
SDU 182121	SEMPER FIDELIS (100'), Larry Clifton, Pictorial.	\$2.50
SDU 182122	SEVEN YEARS WITH THE WORTHY WOMAN (100'), Emerson's Orchestra, Pictorial.	\$2.50
SDU 182123	SCHNEERAZADE (100'), Dave Schorer, Official.	\$2.50
SDU 182124	THE SINGING HILLS (100'), Arthur Johnston Singers, Castle.	\$2.50
SDU 182125	SKYLARK (100'), Soopy Dushan, Official.	\$2.50
SDU 182126	SMILE (100'), Larry Clifton, Pictorial.	\$2.50
SDU 182127	SMILES (100'), Tammy Reynolds, Official.	\$2.50
SDU 182128	STORMY WEATHER (100'), Sugar Kane, Castle.	\$2.50
SDU 182129	STRUM FUN (100'), Eddie Peabody, Official.	\$2.50
SDU 182130	SWEET SWEET SWEET SWEET SWEET (100'), Maxine Stewart, Official.	\$2.50
SDU 182131	TABU (100'), Caridad Garcia, Pictorial.	\$2.50
SDU 182132	THERE'S A PAMPAS MOON ON THE CAMPUS (100'), Diana del Rio and The Collegians, Castle.	\$2.50
SDU 182133	THIS IS MY BOYFRIEND WATTE (100'), Ted Fio Rina, Official.	\$2.50
SDU 182134	TURN OUT THE LIGHTS (100'), Vincent Lopez, Official.	\$2.50

SDU 182135	UNSPHITCHED SUE (100'), June Burnette, Pauline Drake, Fantorettes.	\$2.50
SDU 182136	VINE STREET BLUES (100'), Winy Manone, Official.	\$2.50
SDU 182137	WHY A GYPSY PLAYS (100'), Katherine Caparno, Musical.	\$2.50
SDU 182138	WHEN PADDY MCGITY PLAYS THE HARP (100'), Gus Van, Official.	\$2.50
SDU 182139	WHO'S YENOODI (100'), with Loni Treadwell, Official.	\$2.50
SDU 182140	YOU ARE MY SUNSHINE (100'), Emerson's Mountaineers, Pictorial.	\$2.50
SDU 182141	YOU'LL HAVE TO SWING IT (100'), Jerry Boren, Official.	\$2.50

USED FILM SPECIAL

We have a good supply of used prints on all of the Abbott and Costello and W. C. Fields comedies, and the Gloria Jean musical, described below. You'll be sure to enjoy any of these films — they're all first rate!

SDU 1081	THE GREAT CHASE (1 reel), Castle. Fields tries a siesta in the park and innocently becomes involved in the funniest mix-up with bank bandits ever screened. He is forced to drive their getaway car and drives them crazy.	\$9.95
SDU 1082	MUDDER AND FODDER (1 reel), Official. When a Mudder isn't a Mother and a Fodder really isn't a father, there is bound to be a confusion of confusion. Especially when Bud Abbott and Lou Costello tangle with All-American favorite Leon Errol.	\$9.95
SDU 1083	OYSTERS AND MUSCLES (1 reel), Castle. It's a wild oyster stew where Lou is suddenly caught on the far end of a hook. Bud thinks they're made Lou strong enough to meet the Masked Marvel. It's a triangle of laughs to a doubled-up roaring finish! \$9.95	
SDU 1084	PUNCH ME, PLEASE! (1 reel), Official. Imagine Abbott and Costello just trying to get themselves arrested. They break all the laws in the book in a slapstick festival. Abbott's slick talk and Costello's angelic face can't get them into prison and save them from the mob. \$9.95	
SDU 1085	RIOT ON ICE (1 reel), Castle. Bud and Lou have furious fun at a skating rink where Lou is suddenly caught on the far end of a crack-the-whiff. He goes through a snafu bar, finally grabbing a post and wrecking the building in a wild riot of laughs! \$9.95	
SDU 15B127	SNOWTIME SERENADE (1 reel), Castle. Gloria Jean is gamed by other singers in a winter medley, in lovely settings, as they sing "O Christmas Tree," "Wintertime Wonderland," and "Fireside Melody." Good music for any time of the year. \$7.95	

One- and Two-Reel Musicals

SDU 15B231	ALPINE RENDEZVOUS (1 reel), Ray Hale and The Beavers, Edsonettes, Pictorial.	\$5.95
SDU 15B232	ARCADE VARIETIES (1 reel), with East and Dumka, Lillian Beth, Gutska, Pictorial.	\$7.95
SDU 15B233	BIT OF BLARNEY, A (1 reel), with The Four Shishons, Castle.	\$7.95
SDU 15B234	BIG AND BOOGIE (1 reel), with Maxine Johnston and Maurice Heca, Official.	\$7.95
SDU 15B235	CALL OF THE WEST (1 reel), Margie Blair, Spode Casey, Official.	\$5.95
SDU 15B236	CARNIVAL SHOW (1 reel), with Jim Peiner, The Gotton Club Trump Band, and The Three De Lovelies, Pictorial.	\$7.35
SDU 15B237	COLLEGE AND CARNIVAL RHYTHM (1 reel), with Diana del Rio and The Collegians, Castle.	\$5.95
SDU 15B238	COLLEGE CAMPUS AND COLLEGE SONGS (1 reel), Official. A tour of beautiful college campuses and a medley of college songs.	\$7.95
SDU 15B239	COMICAL CAPERS (1 reel), with The Four Paiks, Martha Wayne, Castle.	\$7.95
SDU 15B240	CONTINENTAL MELODIES (1 reel), with Maria Del Rio, Naomi Martinez, Castle.	\$7.95
SDU 15B241	CROSSB Favorites (1 reel), The King Sisters, Official.	\$5.95
SDU 15B242	DANCE MELODIES (1 reel), Vincent Lopez, Carroll Hood, Ann Parker, Castle.	\$7.95
SDU 15B243	DENTAL FOLLIES (1 reel), Pinky Lee, Allison Ows, Skibo.	\$7.95
SDU 15B244	DEVILED (1 reel), with Loni Miletich, Official.	\$7.95
SDU 15B245	DOING THE TOWN (2 reels), Ozzie Nelson and his Orchestra, Universal.	\$15.95
SDU 15B246	EIGHT CAROLS (1 reel), Castle.	\$7.95
SDU 15B247	GENIE OF SONG (1 reel), Deana Durbin, Castle.	\$7.95
SDU 15B248	GYPSY SONGS (1 reel), Official.	\$7.95
SDU 15B249	HARMONY HIGHWAY (2 reels), Al Deaneau and his Orchestra, Uni-Univisil.	\$16.95
SDU 15B250	HAWAIIAN MELODIES (1 reel), with Loni Miletich and his Hawaiian, Castle.	\$7.95
SDU 15B251	HILLBILLY HOLIDAY (1 reel), The Fashionists and The Jesters, Official.	\$7.95
SDU 15B252	HIT PARADE HITS (1 reel), with Boaz Kani, Jay Rodgers, Castle.	\$7.95
SDU 15B253	INTERNATIONAL RHYTHMS (1 reel), Ray Berek and his Aloha Islanders, with Ray Mark, Pictorial.	\$7.95
SDU 15B254	JOLLY FIDDLE (1 reel), with the Jolly Jesters and Tommy Merritt, Official.	\$7.95
SDU 15B255	JUBILEE (1 reel), with The Collegians, Ray Loni Miletich, Castle.	\$6.95
SDU 15B256	LATIN RHYTHMS (1 reel), with Loni Miletich, Official.	\$7.95
SDU 15B257	LULLY RHYTHMS (1 reel), The Mills Brothers, Official. Johnny Denson, Official.	\$7.95
SDU 15B258	LOVE'S PROPOSING, A (1 reel), with the Rhythmic Singsters, with the Girl Out, Marie Chase, Sweet and Lovely, Official.	\$6.95
SDU 15B259	LET'S ALL SING TOGETHER, No. Four (1 reel), Library Films. Containing My Wild Irish Rose, En Reclat My Solo, Clementine, and I've Got Sugar, Official.	\$9.95
SDU 15B260	LET'S ALL SING TOGETHER, No. Six (1 reel), Library Films. Containing I Got a Hole, Fing Together, I've Been Working on the Wall, and Off to the Races, Official.	\$9.95
SDU 15B261	LET'S SING TOGETHER, No. Five (1 reel), Library Films. Containing My Wild Irish Rose, En Reclat My Solo, Clementine, and I've Got Sugar, Official.	\$7.95
SDU 15B262	LET'S SING A WESTERN SONG (1 reel), The Gardeners, Castle.	\$9.95

BLACKHAWK FILMS INC.
GAVENPORT, IOWA

SDU 158220	LOGIN PRIMA AND HIS BAND (1 reel), Castle	\$7.95
SDU 158179	MERRILY WE SING (1 reel), The Gardeners, Castle	\$7.90
SDU 158000	MUSIC WITH SPICE, Reel 3 (1 reel), with Sally Rand and Isabella, Official	\$9.95
SDU 158117	MY OLD KENTUCKY HOME (2 reels), The Kings Men, Admiral \$18.95	
SDU 158105	OLD RUSSIAN JAMBOREE (1 reel), Gertrude Niesen, Castle	\$7.95
SDU 158091	OLD-TIME TUNES (1 reel), Fair Lady Killers, Smokey Larson, Official	\$9.95
SDU 158500	POT LUCK (1 reel), Doug Levitt, Russ Brown, Stanley and Elaine, Skibo	\$7.90
SDU 158103	RHUMBA WITH SPICE (1 reel), Nere Marales and Orchestra, Official	\$7.95
SDU 158101	RHYTHM IN RHAPSODY (1 reel), Stan Kenton's Orchestra, Nick Lissa, Castle	\$7.50
SDU 158107	ROMANCE AND RHYTHM (1 reel), with Kenny Stevens, The Six Sweethearts, Castle	\$5.95
SDU 158106	ROMANTIC BALLADS (1 reel), with The Four Pecks, Del Cavina's Orchestra, Castle	\$5.95
SDU 158109	ROMANTIC RHYTHMS (1 reel), with Stan Kenton's Orchestra and Lucille Bremer, Official	\$7.90
SDU 158111	RURAL RHYTHM (1 reel), Frank Nevak and his Rhythm Teachers, Castle	\$6.90
SDU 158115	SEPIAN SWING (1 reel), Cab Calloway, Maurice Ross, Official	\$7.95
SDU 158120	SING AND BE HAPPY (1 reel), with The Gardeners, Castle	\$5.95
SDU 158225	SINGING COWBOYS, THE (1 reel), Comedy House	\$7.95
SDU 158226	SNOWTIME JUBILEE (1 reel), Giney Simms, Castle	\$7.95
SDU 158127	SNOWTIME SERENADE (1 reel), with Gloria Jean, Castle	\$7.90
SDU 158128	SONG AND DANCE PARADE (1 reel), The June Taylor Girls, The Madcaps, Castle	\$7.95
SDU 158122	SONGS OF LOVE (1 reel), with The Melody Makers, Del Casaria's Orchestra, Castle	\$7.95
SDU 158222	SONGS OF THE IRISH (1 reel), Lonnie Han, Maxwell Girls, Gus Van, Castle	\$7.95
SDU 158224	SONGS TO REMEMBER (1 reel), Men and Maids of Melody, Michael Bartlett, Castle	\$7.95
SDU 158131	SONGS OF ROMANCE (1 reel), with Henry Carl, Emory Deakals and his Orchestra, Castle	\$5.95
SDU 158133	SONGS OF THE RANGE (1 reel), Carson Robison's Buckaroos, The Wacky Trio, Castle	\$9.95

SDN 158223	SUNSHINE IN THE RAIN AND DADDY TAKE YOU OFF (20"), Hollywood Film, Song by Smokey Rogers and Cavalede	
SDU 158221	STYLES AND SMILES (1 reel), Virginia Verrill, M. Fischer, Marnie Daniels, Pictorial	
SDU 158148	SWEET AND LOVELY (1 reel), Harry Cool and his Orchestra	
SDU 158223	SWEET SYNCOPATION (1 reel), Mary Gilbert, Hal his Orchestra, Murray Stuart, Sugar Kane, Castle	
SDU 158209	TALENT AUCTION (1 reel), with Irene Besley, Men, and Paul Robinson, Pictorial	
SDU 158155	TEDDY POWELL AND HIS BAND (1 reel), Official	
SDU 158165	TIME ON THEIR HANDS (1 reel), Charles Corliss, Skibo	
SDU 158220	TOMMY TUCKER AND HIS BAND (1 reel), Castle	
SDU 158205	TONY PASTOR AND HIS BAND (1 reel), Castle	
SDU 158204	YAKKEE DOODLE HOME (1 reel), with Sid Gary, Ni (5mm, Pictures)	

Projection Lamp

We have a small supply of 750 watt, 110 volt, 110 watt projection lamps made by Westinghouse that we can sell at a special price. These are all first quality lamps one of the outstanding lamp manufacturers in the world and normally they are priced at \$4.53 each. We have them to you, while our small stock lasts, at the low price, each

NEW 16mm. SOUND CLOSE OUT

KENNETH SPENCER, Baritone (1 reel) List, \$19.75. Our price	\$7.95
TEXTILE AND DESIGN (1 reel) <i>Native Craftsmen of Mexico</i> List, \$30.00. Our price	\$6.95
WILLIAM PRIMROSE, Violist (1 reel) List, \$19.75. Our price	\$7.95
WOOD, CLAY AND FINE ARTS (1 reel) <i>Native Craftsmen of Mexico</i> List, \$30.00. Our price	\$6.95
OVERNIGHT (100') with Vincent Lopez and his Orchestra List, \$7.50. Our price	\$1.98
JUVENILE JUBILEE (1 reel) <i>Musical with Kay Lorraine and Johnny Downs</i> List, \$17.50. Specially priced	\$5.95
SONGS OF LOVE (1 reel) <i>Musical with Gene Grounds and Sylvia Froas</i> List, \$17.50. Our price	\$5.95
SALT SHAKERS (1 reel) <i>Musical with J. C. Flippen</i> List, \$19.75. Our price	\$6.95
THUNDER TOWN (1 reel) with Bob Steele List, \$19.75. Our price	\$7.95
WASHINGTON IN VIRGINIA (1 reel) <i>Travel</i> List, \$17.50. Our price	\$7.95
THE BIG BROADCAST (1 reel) <i>George Pal Puppetoon</i> List, \$19.75. Our price	\$6.95
THE HEALTH FARM (1 reel) <i>Farmer Al Falta Cartoon</i> List, \$19.75. Our price	\$6.95
LOVE ON THE RANGE (1 reel) <i>George Pal Puppetoon</i> List, \$19.75. Our price	\$6.95
THE SLEEPING BEAUTY (1 reel) <i>George Pal Puppetoon</i> List, \$19.75. Our price	\$6.95
TRAILER LIFE (1 reel) <i>Farmer Al Falta Cartoon</i> List, \$19.75. Our price	\$6.95
FLYING FEATHERS (1-reel) <i>RKO-Pathe Sportboom</i> List, \$19.75. Our price	\$7.95
RIDIN' THE CREST (1 reel) <i>RKO-Pathe Sportboom</i> List, \$19.75. Our price	\$7.95

THE CHALLENGER

with Buster Crabbe, Arline Judge, Donald Mayo

A rousing ring story with a great deal of sentimental appeal, it is only a truck driver, but wanting to give his son a good school to the ring as a source of extra income. He makes good — but his heart and his career in the wrong girl. Here's a punch-pack — 3 reels in length — running just under 50 minutes. Prints reg. \$62.50. But, like everything else you buy at Blackhawk, you really save money. Brand new, first quality prints will cost you LESS THAN WHOLESALE, only

MICKEY MOUSE CARTOONS

Everyone enjoys animated cartoons, and those drawn by Disney are classics among cartoons. We have a good supply of each of the following Mickey Mouse cartoons ordinarily sell at \$5.00 per print. Blackhawk brings you prints for the small price, each

or, three for

16 SDN 6B58	ALL AMERICAN MICKEY
16 SDN 6B40	CHRISTMAS TOYLAND
16 SDN 5B59	GOLD RUSH MICKEY
16 SDN 6B60	MICKEY GIVES A PARTY
16 SDN 6B43	MICKEY AND THE LILLIPUTIAN
16 SDN 6B57	MICKEY PLAYS SANTA CLAUS
16 SDN 6B42	MICKEY SAVES THE AIRMAIL
16 SDN 6B61	MICKEY AND SIMON LEGREE
16 SDN 6B62	MICKEY'S EXCITING PICNIC
16 SDN 6B41	MICKEY'S TRICK HORSE
16 SDN 6B63	MOVIE STAR MICKEY
16 SDN 6B39	ROBINSON CRUSOE MICKEY

COLOR FILMS AT LOW PRICES

Railroading Films

MAINLINE U. S. A.

16 SDU 76C3
Here is a 2-reel Kodachrome film in 16mm. sound that traces the impact of railroad construction over the last century as the prime means of the general development of our country — how the railroads today have a very direct effect on all our lives. Shown are a great many spectacular shots of streamliners and freights at speed, across prairies, over bridges, against backgrounds of snow-capped peaks. Railroad fans can easily identify the trains of their favorite railroad. You'll see streamliners and freights of the Monon, Rock Island, Milwaukee, New Haven, Santa Fe, New York Central, Pennsylvania, Burlington, Southern Pacific, Erie, Missouri Pacific, North Western, and many another alike. You'll also see many a yard goat at work, and many other activities of the railroads in maintaining the far-flung and complex services that they render. Even those of you who aren't first of all railroad fans will find this an informative, absorbing, entertaining and very beautiful film to have in your collection. (Prints of this new are valued at \$150.00.) While our stock of fine used prints remains available, our price is only . . . **\$24.95**

LOADED FOR WAR

16 SDU 76C6
The thrilling story of the American railroads performing the greatest war job in history, in a 2-reel, 16mm. sound film in full color kodachrome. The film shows how essential was the wartime job of the railroads and how they contributed to Allied victory. Shown are many of the special tasks the railroads had during World War II — the moving of troops and their equipment; raw materials; tanks, guns and major parts for ships and planes — and how many of their normal jobs were filled by women and retired employees who returned to work. But, in addition to all this, we see some of the most effective shots of steam locomotives, sometimes three in a row, boosting tonnage over one of the Santa Fe's steep passes in the West. This film does not overlap pictorially with either MAINLINE U.S.A. or LIFE-LINE OF THE NATION, nor with BIG TRAINS ROLLING, prints of which we have been offering up until recently. While our stock of good used prints remains available, you may purchase one . . . **\$19.95** for only . . .

LIFELINE OF THE NATION

16 SDU 76C4
A 2-reel 16mm. sound film in full color Kodachrome showing the magnificent performance of our railroads during World War II. The emphasis in this film is more on the movement of freight than of passenger travel. As a result the film is somewhat in contrast to either MAINLINE U.S.A. or BIG TRAINS ROLLING. The viewer, too, will note another big difference — the emphasis of the majestic steam locomotive which was still — during the war — the number one source of motive power for freight as well as passenger transportation. There is a marked contrast with today when diesel power is close to taking over most principal runs. So, for those of you who have a particularly soft spot in your hearts for the steam locomotive, here's your chance to see some of the big boys of the Santa Fe, Union Pacific, Norfolk, and Western, Rio Grande, Southern Pacific and Pennsylvania in action. You'll see lots of others, too. (Prints of these films are valued at \$150.00 new.) While our stock lasts, you may buy a good used print for only . . . **\$24.95**

COMBINATION SPECIAL: Prints of MAINLINE U.S.A. and LIFE LINE OF THE NATION \$44.95
regularly totaling \$49.90 — when purchased together at one time, only . . .

Used Color Films on Other Subjects

- 80 SDU 133047 AUTUMN ON THE FARM (1 reel, in Kodachrome). In this charming color film, two farm children observe the changes that take place in plant and animal life during autumn. An Encyclopaedia Britannica Film. Price new, \$100.00. This used print . . . **\$49.95**
- 80 SDU 7722 CLOTHING TRAINS (2 reels, in Kodachrome). Durdley. Tells the operational story of today's railroads—the various kinds of cars, workings of railroad post office car, how dining car operates, many types of accommodations available for overnight travel; also many things on freight cars. These remaining prints are important in that male titles, or end titles, or one or two short sequences may be missing. They are, however, in generally good screening condition, and a big value at our price . . . **\$19.95**
- 80 SDU 13307 CALIFORNIA (1 reel, in Kodachrome). Official . . . **\$39.95**
- 80 SDU 2702 CLOTHING FOR CHILDREN (1 reel, in Kodachrome). Carment. Teaches the general principles applying in all climates to intelligent selection and preparation of children's clothing. Price new, \$100.00. This used print . . . **\$39.95**
- 80 SDU 13302 COMBAT AMERICA (1, in Kodachrome). Clark Soble in command. Features as well as appearing in this pictorialization of the 33rd Bombardment Squadron's initial and subsequent missions in the ETO. Some of the handling squad effects are of inferior quality, but the film is quite a collector's item . . . **\$39.95**
- 80 SDU 25010 CONNECTICUT (1 reel, in Kodachrome). Official . . . **\$39.95**
- 80 SDU 181028 EL NAVAJO (3 reels, in Kodachrome). Durdley. The daily life of the industrious Navajo Indians in the tribe's natural setting in New Mexico and Arizona. Many car and titles may be missing or a small amount of film in the body of the film, but the print is quite satisfactory, and a collector at the price . . . **\$29.95**
- 80 SDU 1101 FORESTS AND CONSERVATION (1 reel, in Kodachrome). Demonstrates selective logging, reforestation, fire prevention (including an exciting fire-fighting sequence). A Carment Film. Price new, \$100.00. This used print . . . **\$49.95**
- 80 SDU 1701 HOW INVENTING USER RUBBER (3 reels, in Kodachrome). Goodrich. An unusually absorbing film giving two or three short dramatic recon-

- struction of moments in history that were important to the discovery and development of rubber, and how today with continued research and development, new ways are being found to improve articles long made from rubber, as well as the creation of entirely new products. . . . **\$29.95**
- 80 SDU 250184 HAWAII (1 reel, in Kodachrome). "This Land of Ours." Official . . . **\$39.95**
- 80 SDU 180313 JINGLE BELLS (100', in Color). Post. Appropriate scenes illustrate the lively Christmas songs, while the words appear for group singing. . . . **\$9.95**
- 80 SDU 26011 LINE FROM YUCATAN. A (1 reel, in Kodachrome). OIAA . . . **\$19.95**
- 80 SDU 7507 MAGIC KEY. THE (2 reels, in Kodachrome). Wolff. An absorbing and well-produced film describing how, free enterprise, coupled with the sense of adventure, has given America the highest living standards ever known. It shows the vital "you" advertising plays in creating jobs, producing national wealth, and making lives richer and happier. (Some prints carry the name "The Big Pitkin"). . . . **\$49.95**
- 80 SDU 25039 MEXICANA (1 reel, in Kodachrome). "This Land of Ours." Official . . . **\$39.95**
- 80 SDU 25018 PAN-AMERICAN CACAO (1 reel, in Kodachrome). O. C. A. . . . **\$19.95**
- 80 SDU 6804 PASTURE SURVIVAL (2 reels, in Color). Durdley. What "use to die" to stimulate the growth of its Pacific states. . . . **\$49.95**
- 80 SDU 3503 BUN SHEEP RUN (1 reel, in Color). Harman-Hjelm. Handy-wad Film . . . **\$19.95**
- 80 SDU 7203 SOUTH OF THE BORDER WITH DISNEY (3 reels in Kodachrome). OIAA. A record of trip through South America taken by Walt Disney and a group of his artists. Entertained by their own cartoons. . . . **\$49.95**
- 80 SDU 380156 SPINNING FOR STEELHEAD (1 reel, in Kodachrome). Hawley-Lord-Stirling . . . **\$29.95**
- 80 SDU 35031 TONDERWEE PICNIC (1 reel, in Color). Commonwealth . . . **\$14.95**
- 80 SDU 2508 WYOMING (1 reel, in Kodachrome). "This Land of Ours." Official . . . **\$39.95**
- 80 SDU 2508 WYOMING (1 reel, in Kodachrome). "This Land of Ours." Official . . . **\$39.95**

NEW 16MM. SOUND AND SILENT FILM

ZANE GREY CLASSICS

Released by Hollywood Film
Length 1-reef

16mm. sound — Blackhawk's Price, \$15.89
16mm. silent — Regularly \$9.75. Blackhawk's Price, \$8.59

Here are highlights in action-filled and dramatic form from almost a dozen famous Zane Grey stories which were either produced or originally distributed theatrically by Paramount. These are not only entertaining today for what they are today — but pleasant mementos of the 1930's.

- ARIZONA BADMAN 16 SDN 50B31 (sound) 16 SLN 50B31 (silent) with Hubert Cummings, Buster Crabbe
- BORN TO THE WEST 16 SDN 50B35 (sound) 16 SLN 50B35 (silent) with John Wayne, Johnny Mack Brown
- DRIFT FENCE 16 SDN 50B27 (sound) 16 SLN 50B27 (silent) with Buster Crabbe, Tom Keene
- FORLORN RIVER 16 SDN 50B28 (sound) 16 SLN 50B28 (silent) with Buster Crabbe, June Marzel
- HELL TOWN 16 SDN 50B30 (sound) 16 SLN 50B30 (silent) with John Wayne, Johnny Mack Brown
- HERITAGE OF THE DESERT 16 SDN 50B32 (sound) 16 SLN 50B32 (silent) with Russell Hayden, Donald Woods
- KNIGHTS OF THE RANGE 16 SDN 50B37 (sound) 16 SLN 50B37 (silent) with Russell Hayden, Jean Parker
- MAN OF THE PAST 16 SDN 50B33 (sound) 16 SLN 50B33 (silent) with Randolph Scott, Noah Beery, Sr.
- THE THUNDERING HERD 16 SDN 50B36 (sound) 16 SLN 50B36 (silent) with Randolph Scott, Judith Allen
- TO THE LAST MAN 16 SDN 50B29 (sound) 16 SLN 50B29 (silent) with Randolph Scott, Buster Crabbe
- WAGON WHEELS 16 SDN 50B34 (sound) 16 SLN 50B34 (silent) with Randolph Scott, Gail Patrick

FAIRY TALES

Released by Sterling
Length 1-reef

Regularly \$22.50. Blackhawk's Price, \$16.89

A series of fairy tales — some of the very best and most famous — effectively produced with live actors — not cartoons, puppets or marionettes.

- THE BEAR SKIN 16 SDN 40B25 (sound only)
- BEAUTY AND THE BEAST 16 SDN 40B17 (sound only)
- CINDERELLA 16 SDN 40B16 (sound only)
- HANSSEL AND GRETEL 16 SDN 40B25 (sound only)
- JACK AND THE BEANSTALK 16 SDN 40B18 (sound only)
- LITTLE RED RIDING HOOD 16 SDN 40B21 (sound only)
- THE MAGIC LAMP 16 SDN 40B24 (sound only)
- RAPUNZEL 16 SDN 40B22 (sound only)
- RUMPLESTILTSKIN 16 SDN 40B20 (sound only)
- THE SLEEPING BEAUTY 16 SDN 40B19 (sound only)
- SNOW-WHITE AND ROSE-RED 16 SDN 40B26 (sound only)
- THE WICKED WISH 16 SDN 40B27 (sound only)

GENE AUTRY

Released by Hollywood Film
Length 1-reef

WESTERNS

16mm. sound — Regularly \$19.75. Blackhawk's Price, \$15.89
16mm. silent — Regularly \$9.75. Blackhawk's Price, \$8.59

- LOADED GUNS 16 SDN 50B38 (sound) 16 SLN 50B38 (silent)
- MYSTERY OF THE INDIAN UPRIISING 16 SDN 50B59 (sound) 16 SLN 50B59 (silent)
- WILD ROAN 16 SDN 50B40 (sound) 16 SLN 50B40 (silent)

MUSICALS

16mm. sound — Regularly \$19.75. Blackhawk's Price, \$15.89

- GENE AUTRY FILM ALBUM (Loaded Pistols) 16 SDN 15B198 (sound only)
- GENE AUTRY FILM ALBUM (Last Round-up) 16 SDN 15B199 (sound only)
- GENE AUTRY FILM ALBUM (Strawberry Roan) 16 SDN 15B200 (sound only)

LAUREL AND HARDY COMEDIES

Released by Library Films
Length 1-reef

16mm. sound — Regularly \$19.75. Blackhawk's Price, \$15.89
16mm. silent — Regularly \$12.00. Blackhawk's Price, \$9.89

Laurel and Hardy are comedians of the old school, and there's nothing coming out that's as funny as their best material of the 1930's. In these, you get some of the best!

- BEATS 16 SDN 10B1 (sound) 16 SLN 10B1 (silent)
- COUNTY HOSPITAL 16 SDN 10B4 (sound) 16 SLN 10B4 (silent)
- DIRTY WORK 16 SDN 10B3 (sound) 16 SLN 10B3 (silent)
- HOG WILD 16 SDN 10B11 (sound) 16 SLN 10B11 (silent)
- THE HOOSIEGOW 16 SDN 10B12 (sound) 16 SLN 10B12 (silent)

HAL ROACH'S FAMOUS KIDS COMEDIES

Released by Official
Length 1-reef

16mm. sound — Regularly \$19.75. Blackhawk's Price, \$15.89
16mm. silent — Regularly \$9.75. Blackhawk's Price, \$8.59

These 1-reef films are the last two series of comedies made by the "Our Gang" comedies before being discontinued production and their rights to this registered trade mark to M.G.M. And they're some of the best made with Spanky, Stymie, Alfalfa, and many others of the 1935-1937 period.

- THE AWFUL TOOTH 16 SDN 10B36 (sound) 16 SLN 10B36 (silent)
- BEAR FACTS 16 SDN 10B35 (sound) 16 SLN 10B35 (silent)
- BORED OF EDUCATION 16 SDN 10B39 (sound) 16 SLN 10B39 (silent)
- CANNED FISHING 16 SDN 10B37 (sound) 16 SLN 10B37 (silent)
- FISHY TAILS 16 SDN 10B34 (sound) 16 SLN 10B34 (silent)
- GLOVE TAPS 16 SDN 10B6 (sound) 16 SLN 10B6 (silent)
- HEARTS ARE THUMPS 16 SDN 10B8 (sound) 16 SLN 10B8 (silent)
- HIDE AND SHRIEK 16 SDN 10B38 (sound) 16 SLN 10B38 (silent)
- MAIL AND FEMALE 16 SDN 10B16 (sound) 16 SLN 10B16 (silent)
- NIGHT 'N' GALES 16 SDN 10B26 (sound) 16 SLN 10B26 (silent)
- PAY AS YOU EXIT 16 SDN 10B30 (sound) 16 SLN 10B30 (silent)
- TWO TOO YOUNG 16 SDN 10B33 (sound) 16 SLN 10B33 (silent)

CHARLIE CHAPLIN COMEDIES

Released by Official
Length 1-reef

16mm. sound — Regularly \$19.75. Blackhawk's Price, \$15.89
16mm. silent — Regularly \$9.75. Blackhawk's Price, \$8.59

A group of Charlie Chaplin comedies edited from material produced very early in or two of Chaplin's fame.

- THE CHAMPION 16 SDN 10B3 (sound) 16 SLN 10B3 (silent)
- THE FACE ON THE BARROOM FLOOR 16 SDN 10B4 (sound) 16 SLN 10B4 (silent)
- HITS OF THE PAST 16 SDN 10B10 (sound) 16 SLN 10B10 (silent)
- IN THE PARK 16 SDN 10B14 (sound) 16 SLN 10B14 (silent)
- LAUGHING GAS 16 SDN 10B56 (sound) 16 SLN 10B56 (silent)

Released by Hollywood Film
Length 1-reef

16mm. silent — Regularly \$8.75. Blackhawk's Price, \$7.89

This group of Charlie Chaplin comedies were produced a year or so after the group above, and have been re-edited from their original 2-reel versions.

- CAUGHT IN A CABARET 16 SLN 10B42 (silent only)
- DOUGH AND DYNAMITE 16 SLN 10B40 (silent only)
- HIS PREHISTORIC PAST 16 SLN 10B43 (silent only)
- HIS TRYSTING PLACES 16 SLN 10B41 (silent only)

COLLECTORS ITEMS

Released by Blackhawk Films
Length 1-reef

16mm. sound — Blackhawk's Price, \$12.95

These films were produced at the time the stars featured in them were just beginning their climb to fame. We are offering them for their interest in what they are — early efforts of well-known personalities. You'll find that between these and present-day films absorbing and laughable.

- BOB'S BUSY DAY 16 SDN 10B50 (sound only) with Bob Hope
- BRING ON BING 16 SDN 10B51 (sound only) with Bing Crosby
- KROONER'S HOLIDAY 16 SDN 10B52 (sound only) with Bing Crosby
- HI HO BROADWAY 16 SDN 10B53 (sound only) with Bing Crosby
- SING, CLOWN, SING 16 SDN 10B49 (sound only) with Al Jolson

THE STAR SPANGLED BANNER

Released by Castle
Length 50'

16mm. sound — Regularly \$3.00. Blackhawk's Price, \$2.79

Wants of our National Anthem superimposed over pictorial background accompaniment of organ and voice.

- THE STAR SPANGLED BANNER 16 SDN 15B175 (sound only)

HERE COMES THE CIRCUS!
 16 SDN 3538B (sound) 16 SLN 40B2B (silent)
 "Ladies—an' Gents! Hurry, hurry, hurry! . . ."
 All the rest of the Barker's usual chant is true and thrilling to you when you own this home movie filmed exclusively for you by Costello. The parade with beautiful girls, the funniest clowns, the most daring high trapeze artists and high wire performers—the sensational animal acts . . . all are here in a three-act thrill-a-second home movie that holds a first interest with every screening!

LION-TIGER FIGHT
 16 SDN 3538D (sound) 16 SLN 35B2D (silent)
 A mad India drives a maniac tiger toward a deep, broad pit and, by chance, one of India's few lions is driven into the same trap. They battle with ripping claws and even a fangs tearing each other as the second hour of a tremendous ending provides a spectacular climax!

THREE LITTLE BRUINS GO CAMPING
 16 SDN 35B35 (sound) 16 SLN 35B35 (silent)
 A "mother" for your collection. An intimate action shot of these rowdy, mischievous baby bears! They stomp the campers' horses, take possession of treats, tables and provisions and wreck the camp in a riot of fun! The woodland's greatest comedians will delight any audience!

THREE LITTLE BRUINS' GREAT ADVENTURE
 16 SDN 35B33 (sound) 16 SLN 35B33 (silent)
 Here is a new and delightful camera study of these mischievous baby bears and their friends of the wild. They have amusing encounters with a porcupine, a skunk and a woodchuck and even a snake and though they narrowly escape losing their freedom, their adventures are fun for them and for all who own this movie.

THREE LITTLE BRUINS IN A CANOE
 16 SDN 35B34 (sound) 16 SLN 35B34 (silent)
 Elmer, always the ring-leader, entices his unsuspecting companions into a canoe at the headwaters of a rushing stream. There they are, and they are not so far before! Through rapids, whirlpools and hair-raising dangers they are swept through thrills and laughs for every audience! Don't miss it!

THREE LITTLE BRUINS IN THE WOODS
 16 SDN 35B25 (sound) 16 SLN 35B25 (silent)
 Concealed camera steal amazing intimate, action shots of these incredible baby bears and many kind creatures of the wild! They will make you marvel at the human things they do! Only invisible people could see the wild things of the woods as this great film shows them!

THREE LITTLE BRUINS MAKE MISCHIEF
 16 SDN 35B26 (sound) 16 SLN 35B26 (silent)
 Elmer and his pals find a new world of astounding interest on a farm! The real clowning starts when they discover lambs and chickens. How do you get sheep done? The mischief they make on penny shaves results in a cyclone of fighting and fooling until you'll roar with laughter!

SNOOKY BEARS ON A RAMPAGE
 16 SDN 35B22 (sound) 16 SLN 35B22 (silent)
 The three four-footed rascals are a riot of trouble for the cowhands on a ranch and delight in roughing over a sleeping man and exploring his possessions. Horse thieves attempt to steal a prize mare one night but the Snooky Bears across the ranch hands. There is a terrific battle but the house is saved and the cow's misdeeds are forgiven!

THREE LITTLE BRUINS ON A SPREE
 16 SDN 35B27 (sound) 16 SLN 35B27 (silent)
 High above the deep canyon Elmer and his pals discover a cable tower and climb it! They try to walk the wire, only to slip and dangle dangerously, hanging by one paw! Unhappy and frightened, they put on a thrill act until circus would bill as a true attraction!

WING, CLAW AND FANG
 16 SDN 35B31 (sound) 16 SLN 35B31 (silent)
 A raven that typewrites! A penguin that goes to market. An ostrich whose birds are amusing but you'll gasp when a full-grown lion, supposed to be playful, leaps on his trainer with savage fury! You'll thrill to the mad antics of a bear who's put on a pair of "saberlike teeth" and great thrill movie!

W. C. FIELDS COMEDIES

Released by Costello
 Length 1- reel
 16mm. sound — Regularly \$21.75.
 Blackhawk's Price, \$16.89

16mm. silent — Regularly \$9.75.
 Blackhawk's Price, \$6.59

HURRY HURRY
 16 SDN 10B14 (sound) 16 SLN 10B14 (silent)
 Thrills, chills and hysteria in the maddest musical merry-making ever screened! Fields thinks the lady in a hurry to get to a maternity hospital expects to be a "milkmaid." He driving gives a whole town stone-dead and weak hearts! And you'll be limp with laughter after every screening.

THE GREAT CHASE
 16 SDN 10B17 (sound) 16 SLN 10B17 (silent)
 Fields tries a siesta in the park and innocently becomes involved in the funniest mix-up with bank hoppers. He's forced to drive through a mad "betwixt-a-cat" and he drives them crazy! You'll be laughing long after this home movie comes to its hilarious end!

ABBOTT AND COSTELLO COMEDIES

Released by Costello
 Length 1-reel
 16mm. sound — Regularly \$21.75.
 Blackhawk's Price, \$16.89
 16mm. silent — Regularly \$9.75.
 Blackhawk's Price, \$6.59

FUN ON THE RUN
 16 SDN 10B13 (sound) 16 SLN 10B13 (silent)
 Basketball! Girls! Variety vs. The Amateur! Bud and Lou crash the game! It's a knockdown, drag-out feast of fun as the two zany pairs pace the crowd! They are surrounded by girls and mobbers for a wild and side-splitting chase! The climax is a riot of fun and laughs!

HIGH FLYERS
 16 SDN 10B19 (sound) 16 SLN 10B19 (silent)
 They bail out of a plane with one parachute and it's the fall of the year as they decide to take flying lessons! When Bud loops and rolls the plane for laughs and chills, fire engines and ambulances — but below wait for the boys to make their biggest hit! They do — and how!

KITCHEN MECHANICS
 16 SDN 10B15 (sound) 16 SLN 10B15 (silent)
 Bud and Lou in a pots and pans paste! Two is too many cooks and they spoil a broth but spill the laughs big-deep! They get all stuck up with machinery and drop in the doughnut! You'll say: "Don't miss this carnival of comedy with crazy cooks!"

MIDGET CAR MANIACS
 16 SDN 10B23 (sound) 16 SLN 10B23 (silent)
 The boys are dodging cops at the midget car race track when Costello takes so in an emergency pit stop just as the race starts. He misses a turn but never misses a laugh and a thrill when he roars through the fence and into a wild and hilarious climax!

NO INDIANS, PLEASE
 16 SDN 10B17 (sound) 16 SLN 10B17 (silent)
 With balmy innocence these pookah madcaps break an Indian law — and what bad breaks follow! Scrup-hungry redskins ride like demons after them in a post-up Bivler! Over mountains, across terrifying cliff-top trails they drive with merry miracles saying them!

OYSTERS AND MUSCLES
 16 SDN 10B29 (sound) 16 SLN 10B29 (silent)
 It's a wild system show that starts the fun! The ferocious oysters splash Bud Abbott and Lou Costello! Bud thinks they've made Lou strong enough to meet the Masked Marvel. It's a struggle-hold of laughs to a doubled-up roaring finish!

RIOT ON ICE
 16 SDN 10B32 (sound) 16 SLN 10B32 (silent)
 Bud and Lou have furious fun at a skating rink where Lou is suddenly caught on the fast end of a crack-the-whip! He goes through an hour of oysters crack but funny rabbit-hole! He escapes from the building in a wild riot of laughs to a mad and noisy finish!

Released by Costello
 Length 1-reel
 16mm. sound — Regularly \$19.75.
 Blackhawk's Price, \$15.89
 16mm. silent — Regularly \$9.75.
 Blackhawk's Price, \$6.59

MONEY MUDDLERS
 16 SDN 10B24 (sound only)
 Our first big screen comedy that starts a big-time gambler to collect \$50 grand. They got it, all right, but another gang is after the same money. If they don't deliver, they get killed. If they do deliver, the second gang murders them. The calls for solutions only Bud and Lou can invent.

MIDDER AND FODDER
 16 SDN 10B25 (sound only)
 When "Midder" isn't a Mother and a Fodder — and a Father, there is bound to be plenty of confusion. Especially when Bud Abbott and Lou Costello tangle with All-American favorite Trip Tucker. This trio makes for a marvellous film!

OH MY ACHY TOOTH!
 16 SDN 10B28 (sound) 16 SLN 10B28 (silent)
 This is a case only Lou's toothache is a five-alarm scream! You'll howl with laughter at Lou's visit to the psychiatrist's office.

PINCH ME, PLEASE!
 16 SDN 10B11 (sound only)
 Imagine Abbott and Costello just trying to get themselves arrested. They break all the laws in the book and get a "festive" that will have you roaring with laughter. You'll die if you take Costello's antics far can't get them into prison and save them from the mob! A "real" side-splitter.

ANIMAL FILMS

Released by Costello
 Length 1-reel
 16mm. sound — Regularly \$21.75.
 Blackhawk's Price, \$16.89
 16mm. silent — Regularly \$9.75.
 Blackhawk's Price, \$6.59

CARNIVAL AT THE ZOO
 16 SDN 05B38 (sound) 16 SLN 05B38 (silent)
 Here's the world's most amazing collection of animals — wild animals, odd animals and even animals that do tricks! There's a snarling lion that sniffs long its trainer, confound elephants doing the "bada," playing the loof! Bananas and even one that plays tips! It's the zoo's greatest show on earth!

CHIMP, THE AVIATOR
 16 SDN 35B7 (sound) 16 SLN 35B7 (silent)
 Shifty gets into the air on a plane and gives pilot the fitters when he seals wings and does gymnastics on clouds! The tables are turned when the pilot goes Shifty a few thrills! The frightened Chimp comes to earth in a laugh-filled finish!

CHIMP, THE COWBOY
 16 SDN 35B9 (sound) 16 SLN 35B9 (silent)
 "Widow" that bank robber! Big haul! Sale gets away! But they reckon without "Shifty"! He takes to the saddle — tracks them to his hide-out. Steals his good. Becomes a hero! Bananas arranged at his kind of money business! Excitement and laughs! Here's a cowboy hero!

CHIMP, THE FIREMAN
 16 SDN 35B8 (sound) 16 SLN 35B8 (silent)
 Shifty goes the fire department and soon makes things hot for the firemen! They are about to "put him out" when an alarm is sounded! At the fire, the amazing Chimp provides thrills and laughs and becomes the hero of the occasion!

THE CHIMP'S JAMBOREE
 16 SDN 35B6 (sound) 16 SLN 35B6 (silent)
 At a big amusement park Chimp tries all the thrill stunts — he is judging a parade of glamorous bathing beauties when there is a call for help from the top of the Ferris Wheel! A woman passenger has fainted! Chimp to the rescue! Super monkey business!

CHIMP ON THE FARM
 16 SDN 35B5 (sound) 16 SLN 35B5 (silent)
 His most outraged victims are some boys swimming in the river. When he gets through with their shenanigans they are in a tight spot! But so is "Shifty" and he drives him out at a scarecrow, thinking his punners will pass him by. His trick is a roasting-funny failure!

CHIMP, THE SAILOR
 16 SDN 35B10 (sound) 16 SLN 35B10 (silent)
 "Shifty" goes to sea on a sailing yacht and anyone would go to see the monkey business that unfolds here! He does a trick at the wheel that almost wrecks the ship and is cut away in a rowboat. But he's so funny, he's forgiven!

CIRCUS AT THE ZOO
 16 SDN 35B9B (sound) 16 SLN 35B9B (silent)
 One-fing, side-splitting circus! Young and old here and there! Amusement when the clump comedians do bareback riding, trick like stunts, trapeze non-stop and other acts better than the human stars!

CLYDE BEATTY'S ANIMAL THRILLS
 16 SDN 35B12 (sound) 16 SLN 35B12 (silent)
 You're in the cage with Beatty, the famous trainer! These lions and treacherous tigers sulkily obey, terrific perform feats together in the small arena! Beatty is armed only with a whip and a chain! The great beasts fight back, try to get him! At the end, he is in a race for the cage door!

CROCODILE THRILLS
 16 SDN 35B13 (sound) 16 SLN 35B13 (silent)
 From the Florida Everglades to the Burmese jungles, during one battle vicious crocodiles, catching them are captured by a whip and a chain! One is caught in great jaws and he battles with a theath-bale to escape! A thrilling adventure movie!



ANDY PANDA CARTOONS

Released by Castle
Length 7- reel

16mm. sound - Regularly \$21.75.
Blackhawk's Price, \$16.89
16mm. silent - Regularly \$9.75.
Blackhawk's Price, \$8.59

Another excellent series of cartoons produced by Walter Lantz, creator of Woody Woodpecker. Not quite the personality boy that Woody is, Andy Panda still packs a wallop in fun!

ANDY PANDA'S POP

16 SDN 5B470 (sound) 16 SLN 5B470 (silent)
Andy Panda tries to fix roof! Ladder collapses! Truss holding rolls of roofing paper! Flying paper catches him in roof. Confused pelican vomitates the job! Pop, furious, calls roofing expert!

ANDY'S BLACKSMITH SHOP

16 SDN 5B471 (sound) 16 SLN 5B471 (silent)
Andy Panda, assisted by Andy to allow him to shoe a funny, shaggy animal as a horse and a roof of fun begins! Mixed up with magnets, flying anvils and red-hot horse shoes, Pop finally runs for his life! Andy chases him and proves he can nail in a shoe!

ANDY'S GARDEN

16 SDN 5B472 (sound) 16 SLN 5B472 (silent)
Andy plants seeds and a cocky rooster gobbles them up! He and his mate have a "fun time" with the rooster! Get the worst of the roost until a bottle of Vitamin B-1 is spilled all over the garden! Seeds sprout and plants leap out of the ground! The rooster is frightened!

APPLE ANDY

16 SDN 5B473 (sound) 16 SLN 5B473 (silent)
Here's a fun-fun-fun tale of ferment and strife between good and evil! Andy and Andy! Andy and Andy Panda. It's all about forbidden apples and Andy learns you can't be poly-wallop with Satan!

CRAZY HOUSE

16 SDN 5B474 (sound) 16 SLN 5B474 (silent)
Wild night on the road! Andy Panda and Pop alerted in ear! Fun to crazy house filled with ghosts excited! Andy tries to sleep! Pop in night long riot with crazy gags!

CROW CRAZY

16 SDN 5B475 (sound) 16 SLN 5B475 (silent)
Crow annoys Andy! Haid his corn field! Pop corn in popper! He throws dog a crow's picture as dog will recognize him! Crow too smart for Andy! Dog tricks on dog! Hilarious gags in wild finish!

DIZZY KITTY

16 SDN 5B476 (sound) 16 SLN 5B476 (silent)
Andy's pop (mother) slave at "fun show"! Tries bathing pool! Riot of claws, fur and water! Andy chases cat to swimming pool! Furious fun on spring-boards! Twisting climax!

FISH FRY

16 SDN 5B477 (sound) 16 SLN 5B477 (silent)
Andy wants a fish! Buys goldfish in box! Showered by hungry cat! Cat and fish in merry bow-up! Andy rescues fish! Cat swirls in ambush! Andy and fish over disaster! Bulldog takes care of pop!

GOODEBYE MR. MOTH

16 SDN 5B478 (sound) 16 SLN 5B478 (silent)
Andy in the cleaning and pressing business is wadded by moth! One mishap moth eats everything except a stunk coat! Andy tries to smash him but has a wild time! He has ended Mr. Moth, but has his worms, "The End" eaten into his own hide!

MEATLESS TUESDAY

16 SDN 5B479 (sound) 16 SLN 5B479 (silent)
Andy's a chef! Recipe for meatless meal calls for chicken! Andy tries to mix rooster! Wise bird leads him on mad chase! He helps help! Rooster arrives home head! Then Andy in fun-filled finish!

MOUSE TRAPPERS

16 SDN 5B480 (sound) 16 SLN 5B480 (silent)
Pop, Andy Panda, Mighty Hunter! Big game his meat! Mama Panda annoyed by mouse! Andy brings a mouse trap! Mouse throws party for cat! Gets pass staggering! Terrific ending!

MOUSE COMES HOME

16 SDN 5B475 (sound) 16 SLN 5B475 (silent)
Mouse plays wild tricks on Andy and his dog until they hunt a new home. But Mouse finds them hilarious climax!

NUTTY PINE CABIN

16 SDN 5B278 (sound) 16 SLN 5B278 (silent)
Andy's cabin-building job goes haywire! Beavers steal his lumber! He declares war! Beaver too smart for him! They fell a tree that splits Andy's cabin high in the air! It falls over the beavers' camp! Andy swims out, all wet! Beavers have last laugh!

THE PAINTER AND THE PIONEER

16 SDN 5B293 (sound) 16 SLN 5B293 (silent)
Andy Panda tries to paint a picture of his dog! He would take on Andy and Butch in painting hints! Andy tries rigging up shotgun to Butch's foot! Laughs galore as gun blast ends nonsense!

WACKY WOOD

16 SDN 5B470 (sound) 16 SLN 5B470 (silent)
All gardeners will rear at Andy's troubles with an undestructive weed! It finally makes Andy wreck his home!

WOODY WOODPECKER CARTOONS

Released by Castle
Length 7-reel

16mm. sound - Regularly \$21.75.
Blackhawk's Price, \$16.89
16mm. silent - Regularly \$9.75.
Blackhawk's Price, \$8.59

The most popular cartoon series ever released. Produced by Walter Lantz, this series - tops in theatres today - almost never fails to please.

ACE IN THE HOLE

16 SDN 5B2 (sound) 16 SLN 5B2 (silent)
Woody joins the flying Ace! Gets into pilot's zipper suit! A fate is in the seat of his spats! Goes off! Woody let propeller! Lands in a bomb! Wild comedy with bound! Woody is "grounded," but not!

BARBER OF SEVILLE

16 SDN 5B15 (sound) 16 SLN 5B15 (silent)
Barber out to lunch when Woody wants a trimming! Decides to take over shop! Gets Indian a hot towel surprise! Next customer is thorn, thorns and shackled by Woody's wacky barbering! Wild comedy start at Woody wrecks shop!

BATHING BUDDIES

16 SDN 5B468 (sound) 16 SLN 5B468 (silent)
When Woody rudely interrupts Wally Walrus' bath by mentioning a diving suit search at best time, it's a game of fun! Woody finds a dime—but at what a cost!

THE BEACH NUT

16 SDN 5B20 (sound) 16 SLN 5B20 (silent)
Woody at the beach does tricks on a surf! Woody that make Wally Walrus "burn"! Wally wants a medal for help but it is Woody in disguise and he gives the Walrus a tough and raucous scolding!

CHEW CHEW BARY

16 SDN 5B559 (sound) 16 SLN 5B559 (silent)
Wally Walrus advertises for a wife! Woody dolls up as Cleopatra, the movie queen! Wally falls for "her"! Makes love to rough Woody loses clothes! Riotous fun when Wally tries to give Woody the air!

TRAVELS

Released by Castle
Length 7-reel

16mm. sound - Regularly \$21.75.
Blackhawk's Price, \$16.89
16mm. silent - Regularly \$9.75.
Blackhawk's Price, \$8.59

Here is a wide range of travel films that may contain one on the vacation spot nearest to your heart.

AMERICA'S WONDERLANDS

16 SDN 252L (sound) 16 SLN 252L (silent)
Enjoy in the comfort of your living room the nation's most spectacular sights! Niagara, Crater Lake, Cathedral of the Virgin, Mount Rainier, the Monterey Peninsula - America's most beautiful wonders packed into one magnificent film.

BALI

16 SDN 25B3 (sound) 16 SLN 25B3 (silent)
A dream-world filmed for you! Ancient temples and symbols of age-old faiths are seen. Here, lovely maidens weave strange dance patterns with slim, graceful bodies. An enchanting home movie.

BANFF AND LAKE LOUISE

16 SDN 25B4 (sound) 16 SLN 25B4 (silent)
Alpine resorts in the Canadian Rockies bring you in this fascinating travel film picturing the famous Skelvine Trail, and other attractions together with cold weather scenes of great winter sports.

BELLES OF THE SOUTH SEAS

16 SDN 25B5 (sound) 16 SLN 25B5 (silent)
From Tahiti to New Zealand and on to the island rarely visited by cameramen, the most beautiful among contrasts, human and exotic sights fill this reel!

BERMUDA

16 SDN 25B6 (sound) 16 SLN 25B6 (silent)
Be a tourist wherever you are! The action is in this film. From quaint streets of taverns to the resorts, the beaches and the activities, here is more of Bermuda than you can see. See it before you visit - a reminder of your vacation.

CALIFORNIA PICTURE BOOK

16 SDN 25B8 (sound) 16 SLN 25B8 (silent)
It would take months to see California as this one reel spreads the entire state. Mr. Shasta, the giant redwoods, Lake Mary, Strawberry Point, Santa Barbara and more scenic spots - Hollywood!

CARIBBEAN HOLIDAY

16 SDN 25B9 (sound) 16 SLN 25B9 (silent)
Historic and romantic gems in the tropical islands awaiting the vacationer are in this absorbingly interesting movie of island ports-of-call. Here are rarely pictured harbors, ancient towns and scenic wonders.

ESCAPE IN CANADA

16 SDN 25B14 (sound) 16 SLN 25B14 (silent)
High spots of great interest in the country are shown in this picture book of escape from modern civilization. The cities are here, there are vast wilderness grandeur and unspoiled beauty made possible by transportation through the wilderness. Northwest Mounted Police, a film for many enjoyable showings!

FLORIDA HOLIDAY

16 SDN 25B11 (sound) 16 SLN 25B11 (silent)
Clipses of ancient, historic landmarks features of Florida - and much that is still shown in this movie, such as the hotel and typical peninsula village deep in the heart of the jungle.

GLACIER NATIONAL PARK

16 SDN 25B18 (sound) 16 SLN 25B18 (silent)
The magnificent movement of ice and of ice has carved out a breath-taking of lofty trails, alluring trout streams, campgrounds, and the home of the rarely seen mountain sheep. The home we know an amazing area of America.

GRAND CANYON

16 SDN 25B21 (sound) 16 SLN 25B21 (silent)
The outstanding miracle of nature, the oldest story nature has ever told! The rim and valleys of this gigantic city scene new and astonishing scenes in a changing picture. The ancient version of western songs by a cowboy quartet!

HAWAII

16 SDN 25B22 (sound) 16 SLN 25B22 (silent)
The city of Honolulu, Oahu, to Kilauea with its awe-inspiring rivers of fire, a surf-bath in the long racing Pacific swell. Hahaione is a feature of this Pacific film where it is performed as in Hawaii.

MEXICO

16 SDN 25B28 (sound) 16 SLN 25B28 (silent)
The camera takes you far from the sun-baked streets of Mexico, revealing mysterious relics of forgotten civilization, temples, the great volcano of Popocatepetl, City and the thrills of an exciting rodeo.

NEW ENGLAND HOLIDAY

16 SDN 25B31 (sound) 16 SLN 25B31 (silent)
"Here the embattled farmers stood" and of American liberty has historical interest absorbing film is not just a travelogue, it is a vacation highlight. See it, see it, it is also a vacation highlight in your own home. The White Mountains is a vacationer's paradise!

ROMANTIC ITALY

16 SDN 25B181 (sound) 16 SLN 25B181 (silent)
(New March, 1952, release.)

ROME, THE ETERNAL CITY

16 SDN 25B56 (sound) 16 SLN 25B56 (silent)
An unforgettable film! The camera tells old relics of ancient pomp and glory, of Vatican City and all its spiritual. A home movie collector should own you!

YELLOWSTONE

16 SDN 25B41 (sound) 16 SLN 25B41 (silent)
The famous Yellowstone Park with its thermal, boiling, and geyser activity, its rock formations, and spectacular geysers, has been featured in three fine tourist produce a travel film of thrilling interest.

YOSEMITE

16 SDN 25B42 (sound) 16 SLN 25B42 (silent)
See Sentinel Peak, Cathedral Spire, the mighty El Capitan, Mirror Lake and the back of Livingstone! The finest winter sports as well as the beauty of it in the mount edition, lovely sunrise and in the valley.

NEW 16MM. SOUND PRINTS OF CONCERT FILMS

Released by Sterling

Length 1- reel

16mm. sound - Regularly \$30.00. Blackhawk's Price, \$24.95

- ROMANTIC OVERTURE** 16 SDN 2084 (sound only)
 Brahms's work played by the Vienna Philharmonic Orchestra.
FIFTH SYMPHONY - FIRST MOVEMENT 16 SDN 20811 (sound only)
 Brahms's symphony played by the Vienna Philharmonic Orchestra.
OVERTURE TO ORPHEUS IN HADES 16 SDN 20827 (sound only)
 Gluck's work performed by the Vienna Philharmonic Orchestra.
MUSIC OF THE SPHERES 16 SDN 20825 (sound only)
 Strauss's music performed by the Vienna Philharmonic Orchestra.
TALES FROM THE VIENNA WOODS 16 SDN 20831 (sound only)
 The Vienna Philharmonic Orchestra plays Strauss's music.
VIENNA BLOOD 16 SDN 20835 (sound only)
 Strauss's music played by the Vienna Philharmonic Orchestra.

Length 1 1/2-reels

16mm. sound - Regularly \$35.00. Blackhawk's Price, \$29.95

- ROSAMÜNDE** 16 SDN 20831 (sound only)
 Schubert's music played by the Vienna Philharmonic Orchestra.
EMPEROR WALTZ 16 SDN 20836 (sound only)
 Strauss's work performed by the Vienna Philharmonic Orchestra.

Length 1 1/2-reels

16mm. sound - Regularly \$42.00. Blackhawk's Price, \$34.95

- EINE KLEINE NACHTMUSIK** 16 SDN 2084 (sound only)
 Mozart's music played by the Vienna Philharmonic Orchestra.
SERENATA NOTTURNA 16 SDN 20832 (sound only)
 Mozart's music played by the Vienna Philharmonic Orchestra.
UNFINISHED SYMPHONY - FIRST MOVEMENT 16 SDN 20834 (sound only)
UNFINISHED SYMPHONY - SECOND MOVEMENT 16 SDN 2185 (sound only)
 Schubert's symphony performed by the Vienna Philharmonic Orchestra

Length 2-reels

16mm. sound - Regularly \$50.00. Blackhawk's Price, \$44.95

- TANNHAUSER** 16 SDN 2184 (sound only)
 Wagner's music performed by the Vienna Philharmonic Orchestra.

Released by Official

Length 1-reel

16mm. sound - Regularly \$30.00. Blackhawk's Price, \$24.95

- EULA BEAL, CONTRALTO (Reel 1)** 16 SDN 2087 (sound only)
 containing Schubert's "Erlking" and Mendelssohn's "Oh! Reel in the
 Evening."
EULA BEAL, CONTRALTO (Reel 2) 16 SDN 2085 (sound only)
 containing Gounod's "Ave Maria" and Tchaikovsky's "None But the
 Lonely Heart."
EULA BEAL, CONTRALTO (Reel 3) 16 SDN 2089 (sound only)
 containing Secchi's "When Two That Love Are Parted" and Thomas's
 "None But the Lonely Heart."
EULA BEAL, CONTRALTO (Reel 4) 16 SDN 20810 (sound only)
 containing Gluck's "Orfeo" and Brahms's "Gypsy Songs No. 1 and 2."
JAKOB GIMPEL, VIOLINIST (Reel 1) 16 SDN 20812 (sound only)
 containing Lutz's "Forest Murmurs" and "In Sospira."
JAKOB GIMPEL, VIOLINIST (Reel 2) 16 SDN 20811 (sound only)
 containing Chopin's "Impromptu in A Flat Major," "Mazurka in C
 Sharp," and "Etude in A Minor, Op. 5."
JAKOB GIMPEL, VIOLINIST (Reel 3) 16 SDN 20814 (sound only)
 containing Mendelssohn's "Etude in F Major, Op. 104," "Spinning
 Song, Op. 67, No. 4," and "Lost Illusion, Op. 67, No. 2."
JAKOB GIMPEL, VIOLINIST (Reel 4) 16 SDN 20815 (sound only)
 containing Chopin's "Nocturne in F Sharp," "Waltz in E Minor," and
 "Etude in F Major."
JAKOB GIMPEL, VIOLINIST (Reel 5) 16 SDN 20816 (sound only)
 containing Johannes Brahms' "Variations on a Theme by Paganini,
 Part 1."
JAKOB GIMPEL, VIOLINIST (Reel 6) 16 SDN 20817 (sound only)
 containing Johannes Brahms' "Variations on a Theme by Paganini,
 Part 2."
JAKOB GIMPEL, VIOLINIST (Reel 7) 16 SDN 20818 (sound only)
 containing Chopin's "Etude in E Major, Op. 10," "Waltz in C Sharp
 Major, Op. 64," and "Mazurka in B Flat Major, Op. 24."
MISHEL PIASTRO AND HIS ORCHESTRA (Reel 1) 16 SDN 20822 (sound only)
 containing Gounod's "Ballet Music," Saint-Saens' "My Heart at Thy
 Sweet Voice," and Luzzi's "Ballet Egyptian."
MISHEL PIASTRO AND HIS ORCHESTRA (Reel 2) 16 SDN 20821 (sound only)
 containing Leber's "Gold and Silver Waltz," Strauss's "Tales from the
 Vienna Woods," and Tchaikovsky's "Arabian and Russian Ballets
 from the Nutcracker Suite."
MISHEL PIASTRO AND HIS ORCHESTRA (Reel 3) 16 SDN 20824 (sound only)
 containing Mozart's "Overture to the Marriage of Figaro," Bizet's
 "Lover's Song," and Ballo's "Overture to the Bohemian Girl."
JOSE ITURBI, PIANIST (Reel 1) 16 SDN 20819 (sound only)
 containing Albeniz' "Sesilla" and Chopin's "Fantasia Impromptu."
JOSE ITURBI, PIANIST (Reel 2) 16 SDN 20820 (sound only)
 contains Chopin's "Nocturne" by Rameau and Liszt's "Hungarian
 Rhapsody No. 11" at the piano.
NYRA HESS, PIANIST 16 SDN 20826 (sound only)
 containing Beethoven's "Appassionata."

- VRONSKY AND BABIN, DUO-PIANISTS (Reel 1)** 16 SDN 20836 (sound only)
 containing Brahms' "Waltz in A Flat," Arensky's "Valse" and Rimsky-
 Korsakov's "Flute at the Breakfast."
VRONSKY AND BABIN, DUO-PIANISTS (Reel 2) 16SDN 20837 (sound only)
 containing Beethoven's "Poloviztan Dance from Prince Igor."
EMANUEL FEUERMANN, CELLIST 16 SDN 20835 (sound only)
 containing Dvorak's "Romance, Op. 847" and Paganini's "Spinning Song."
COULIDGE QUARTET, STRING ENSEMBLE 16 SDN 2082 (sound only)
 containing Von Otterdorn's "Andante from String Quartet in E Flat
 Major," and Beethoven's "Fugue from Quartet in C Major, Op. 59."
IGOR GORIN, BARITONE 16 SDN 20845 (sound only)
 containing Rossini's "Largo Al Factotum."
MILDRED DILLING, HARPISST 16 SDN 20821 (sound only)
 containing Zadol's "The Fountain," Hasselmann's "Fireflies," and "March
 of the Men of Harlech."

Length 2-reels

16mm. sound - Regularly \$60.00. Blackhawk's Price, \$49.95

- Performed by the Radio Philharmonic Orchestra of Italy, conducted by
 Fernando Prontali.
PEER GYNT 16 SDN 2182 (sound only)
1812 OVERTURE 16 SDN 2183 (sound only)
ROMEO AND JULIET 16 SDN 2181 (sound only)
SCHUBERT'S UNFINISHED SYMPHONY 16 SDN 2186 (sound only)

Released by Official

Length 1-reel

16mm. sound - Regularly \$30.00. Blackhawk's Price, \$24.75

- YEHUDI MENUHIN (First Film)** 16 SDN 20838 (sound only)
 playing Bach's "Air in D Major" from "D Major Suite for Orchestra,"
 Sarasate's "Babaera,"
YEHUDI MENUHIN (Second Film) 16 SDN 20839 (sound only)
 playing Beethoven's "Rondo of Sonata in D Major, Op. 12, No. 1,"
 Brahms's "Hungarian Dance No. 4,"
YEHUDI MENUHIN (Third Film) 16 SDN 20840 (sound only)
 playing Schubert's "Ave Maria," Bach's "Prelude from Partita in E
 Major,"
YEHUDI MENUHIN (Fourth Film) 16 SDN 20841 (sound only)
 playing Bach's "Aria" from "St. Matthew's Passion" (with Enla Beal,
 Contralto, and Symphony Orchestra conducted by Antal Dorati).
YEHUDI MENUHIN (Fifth Film) 16 SDN 20842 (sound only)
 playing Sarasate's "Gypsy Airs, Op. 95,"
YEHUDI MENUHIN (Sixth Film) 16 SDN 20843 (sound only)
 playing Paganini's "Caprice, No. 24,"
YEHUDI MENUHIN (Seventh Film) 16 SDN 20844 (sound only)
 playing A. Bazzani's "Calabrese, Op. 34, No. 6," Wieniawski's "Scherzo
 Brantelle, Op. 16,"
YEHUDI MENUHIN (Eighth Film) 16 SDN 20845 (sound only)
 playing Sarasate's "Caprice Basque," Brahms' "Hungarian Dance
 No. 3,"
YEHUDI MENUHIN (Ninth Film) 16 SDN 20846 (sound only)
 playing Beethoven's "Allegro of Sonata in D Major," Paganini's "Per-
 petual Motion, Op. 11,"
YEHUDI MENUHIN (Tenth Film) 16 SDN 20847 (sound only)
 playing Sarasate's "Mahnwiese, Op. 21, No. 1," Locatelli's "Lady-
 rinth No. 5."

Released by Castle

Length 1-reel

16mm. sound - Regularly \$21.75. Blackhawk's Price, \$16.89

- AIDA** 16 SDN 20868 (sound only)
 containing "Ritorna Vincitor," "Celeste Aida."
BORIS GODUNOFF 16 SDN 20867 (sound only)
 containing "Death Scene Aria," "Song of Warlam."
DON GIOVANNI 16 SDN 20866 (sound only)
 containing "Il Mio Tesoro," "Vedrai Carizo."
IL TROVATORE 16 SDN 20864 (sound only)
 containing "De Quella Fira," "Miserere," "La Stanchezza."
LA TRAVIATA 16 SDN 20865 (sound only)
 containing "Di Mio Bellenti Spiriti," "Di Provenza Il Mar," "Adi-
 Fon," "E L'Al."
MUSICAL GEMS 16 SDN 20865 (sound only)
 containing "The Emperor Waltz" from Beethoven's First Symphony,
 Chopin's "Waltz Ballet."
TALES OF MOFFART 16 SDN 20862 (sound only)
 containing "The Emperor Waltz" and "You and You."
OVERTURE FROM LA TRAVIATA AND CROPIN BALLET 16 SDN 20869 (sound
 only)
VIENNA PHILHARMONIC ORCHESTRA 16 SDN 20856 (sound only)
 containing "The Beautiful Blue Danube" and "Artist Life."
VIENNA PHILHARMONIC ORCHESTRA 16 SDN 20857 (sound only)
 containing "The Emperor Waltz" and "You and You."
VIENNA PHILHARMONIC ORCHESTRA 16 SDN 20858 (sound only)
 containing "Tales from the Vienna Woods" and "Love Song Waltz."
VIENNA PHILHARMONIC ORCHESTRA 16 SDN 20859 (sound only)
 containing "The Emperor Waltz" and "You and You."
VIENNA PHILHARMONIC ORCHESTRA 16 SDN 20860 (sound only)
 containing "One Thousand and One Nights" and "Treasure Waltz."
VIENNA PHILHARMONIC ORCHESTRA 16 SDN 20861 (sound only)
 containing "The Emperor Waltz" and "Viennese Blood."
WILLIAM TELL OVERTURE 16 SDN 20870 (sound only)

Please order by number and title.

BRAND NEW, FIRST QUALITY 16mm. SILENT PRI AT LESS THAN HALF PRICE!

These sport films and cartoons are subjects which were handled by Castle Films and United World until a short time ago, but have now been discontinued from their lines. We are liquidating the balance of their stock for them — all brand new, first quality prints in their original cartons. Naturally, Blackhawk has cut the prices and you'll save over 50% on any of these.

Notice that we have both complete and headline versions of many of the films, so be sure to specify which you want when you order. The complete versions run approximately 300', with the exception of cartoons, which are somewhat shorter; the headline versions, which are condensations of the complete film, run approximately 100'. Please order by complete number and title.

FOOTBALL JAMBOREE

A hilarious cartoon football game between mice and cats.
16 SLN 5B133 (Complete) \$3.98
16 SLN 6B55 (Headline) \$1.49

JUST ASK JUPITER

Willie Wee Mouse dreams he's a cat and has a wonderful time until he meets a bulldog!
16 SLN 5B211 (Complete) \$3.98
16 SLN 6B56 (Headline) \$1.49

GOLF MAGIC

Here are demonstrations proving a smart player doesn't even need clubs. It's more than trick golf — it's miracle golf!
16 SLN 30B152 (Complete) \$2.98
16 SLN 33B3 (Headline) .99

SANTA CLAUS PUNCH AND JUDY

The delightful pantomime with all its famous characters plus Santa Claus himself, who puts on the show.
16 SLN 40B31 (Complete) \$3.98
16 SLN 43B1 (Headline) \$1.49

SUN, SEA, AND SAILS

Yacht racing on Sound, bay and deep sea!
16 SLN 30B91 (Complete) \$3.98
16 SLN 33B5 (Headline) \$1.49

THE HEALTH FARM

Farmer Al Falfa has trouble with a lot of wacky reducing gadgets!
16 SLN 5B168 (Complete) \$3.98
16 SLN 6B51 (Headline) \$1.49

FOOTBALL PARADE OF 1945

Army-Navy, Columbia-Yale, Southern California-Washington, Georgia Tech-Tulane, Michigan-Ohio State, Notre Dame-Illinois, Ohio State-Purdue, Navy-Notre Dame, Indiana-Purdue.
16 SLN 30B8 (Headline) .99

FOOTBALL PARADE OF 1948

Army-Illinois, North Carolina-Georgia, Minnesota-Washington, Notre Dame-Navy, Southern Methodist-Texas, Northwestern-Ohio State, Penn State-Pennsylvania, Yale-Harvard.
16 SLN 30B11 (Complete) \$2.98
16 SLN 33B1 (Headline) .99

FRAMEUP

Gandy Goose challenges his rival, Pimento Pig, to a boxing match, and it turns out to be quite a surprise!
16 SLN 5B136 (Complete) \$3.98
16 SLN 6B53 (Headline) \$1.49

KNOCKOUT THRILLS

Series that have made ring history: Carpentier-Tunney, Wills-Uzcudun, Sharkey-Dempsey, Braddock-Louis.
16 SLN 30B125 (Headline) .99

SPORT THRILLS OF THE YEAR

Aquaplane tricks, Army-Navy game, Olympic relays, ice hockey, steeplechase, Zale-Cerdan fight, champion ski jumpers.
16 SLN 33B2 (Headline) \$1.49

HERITAGE OF INDIA

A tour of India's most famous sights.
16 SLN 25B207 (Complete)

FOOTBALL PARADE OF 1949

Army-Columbia, Notre Dame-Tulane, Arkansas-Va Stanford-Washington, Notre Dame-Navy, Boston Clemson, California-UCLA, Yale-Harvard.
16 SLN 30B12 (Complete)
16 SLN 33B6 (Headline)

TRAILER LIFE

When Al Falfa tours the Wild West and meets a Chief on the warpath, there's lots of fun!
16 SLN 5B403 (Complete)

BIT AND BRIDLE

Every kind of horsemanship brilliantly demonstrated.
16 SLN 30B34 (Complete)

BROTHER GOLFERS

The six Turnesa Brothers display all the magic of golf.
16 SLN 30B39 (Complete)

MERRY CHRISTMAS

Especially for children.
16 SLN 40B40 (Complete)

FLYING FEATHERS

Two of the world's ace badminton players put on a match.
16 SLN 30B53 (Complete)

IVANHOE

Scott's famous story of knights and maidens and deeds.
16 SLN 40B2 (Complete)

SMOOTH APPROACH

Four crack golfers demonstrate. Slow motion shows on shots, approaches, putting, and how not to m

MIGHTY MOUSE RIDES AGAIN

Three villainous cats sneak in among the mice on and are about to turn the picnic into a party. Mighty Mouse arrives to save the day!
16 SLN 5B255 (Headline)

SPORTING WINGS

Aviation as a hobby is the subject of this reel.
16 SLN 30B88 (Complete)

MOUSE OF TOMORROW

The Mighty Supermouse is born, and starts his against cats!
16 SLN 6B44 (Headline only)

ZALE - GRAZIANO FIGHT

Zale regains world's middleweight title by knocking Rocky Graziano.
16 SLN 33B4 (Headline)

GANDY'S ADVENTURE

Gandy proves himself a goose when he is tricked into by Mr. Lion.
16 SLN 5B143 (Complete)
16 SLN 6B54 (Headline)

WINDWARD WAY

The p's and q's of long-distance sailing in beautiful yachts.
16 SLN 30B105 (Complete)

SWINGING MALLETS

Here is polo as it is played by experts, and it's riding, slam-bang game.
16 SLN 30B96 (Complete)

USED

16mm.

PROJECTOR BARGAINS

These used projectors are all in good basic condition and being offered at prices at which they are being offered. Projector frames and cases are in sound condition, and each unit has been thoroughly checked over and adjusted both mechanically and electronically.

We'll be glad to accept your \$500. or \$1000. silent or sound projector (if of a standard make and model) and in satisfactory condition, either in trade for other merchandise, or for cash.

If you are trying to obtain a particular make and model of projector, we'll be glad to place your order on file. Then, just as soon as we obtain a projector that meets your specifications, we'll get in touch with you and give you first chance at it. Simply write and tell us what you want and (if you wish) approximately what you want to pay, and we'll keep a lookout for that particular machine for you.

We do not sell projectors on time payments. Our terms are cash only - either in full with order or 10% deposit with order and the balance C.O.D. Our guarantee protects you - if for any reason you do not wish to retain the projector you have ordered from us, you may return it, transportation prepaid, within five days after you receive it, and we will give you full credit or refund the purchase price in full, whichever you prefer.

As we frequently have several machines of the same make and model, please order by our item number as well as indicating make and model. In this way there will be no uncertainty as to exactly the machine you want.

KEYSTONE K-160

16mm. silent projector which will operate on either AC or DC. Had 750 watt projection lamp and 2" lens and is equipped with switch making it possible to stop projector to project film as a still picture. Will operate in reverse and has power rewind. Comes complete with empty film reel and power cord. Our item No. 470. Price..... **\$59.95**

AMPRO COMMERCIAL

16mm. sound projector contained in one case, with 8" speaker, 15 watt amplifier capacity, 50" speaker cable, 750 watt projection lamp. Operates on AC current only, and has power rewind. Comes equipped with power cord and empty 1600' reel. Handy and com..... **\$139.95**
Our item No. 351. Price.....

VICTOR 40A

16mm. sound projector equipped with 12 watt amplifier, 12" speaker, 40" speaker cable, 2" lens and had 750 watt projection lamp. Operates on AC current only, at sound or silent speeds, in reverse, and has motor-driven rewind. A very good projector for home and classroom use. Comes complete with power cord and empty 1600' reel. Our item No. 437. Price..... **\$139.95**

BELL AND HOWELL 138

16mm. sound projector with 8" speaker, 50" speaker cable, 12 watt amplifier capacity, 2" lens, 750 watt projection lamp, empty 1600' film reel, and power cord. Operates at either sound or silent speed on AC only, and has power rewind. An especially good unit for use in the home or with small groups. Our item No. 399. **\$139.95**
Price.....

VICTOR 38

16mm. sound projector with 12" speaker, 30 watt amplifier capacity, 40" speaker cable, 2" lens, 750 watt projection lamp, power cord, and empty 1600' film reel. Operates on AC only, at either sound or silent speed, and has power rewind. Our item No. 436. **\$129.95**
Price.....

NATCO 3015

16mm. sound projector with 12" speaker and 50" speaker cable, 750 watt projection lamp, and 2" lens. Operates at either sound or silent speed and in reverse and has power rewind. AC only. Comes with power cord and empty 1600' reel. Our item No. 449. **\$149.95**
Price.....

DE VRY RS

16mm. sound projector with 2" lens, 750 watt projection lamp, 30 watt amplifier capacity, 10" speaker cable, empty 1600' film reel, and power cord. Operates at either sound or silent speed on AC only. Our item No. 424. Price..... **\$119.95**

VICTOR 25AC

16mm. sound projector in two cases, with 12" speaker, 50" speaker cable, 18 watt amplifier output, 2" lens, and 750 watt projection lamp. Comes complete with power cord and empty 1600' film reel. Operates at either sound or silent speed on AC only. Has power rewind. Our item No. 423. Price..... **\$119.95**

MOVIE MITE 63L

16mm. sound projector contained in one case, with 5" speaker, 15" speaker cable, 300 watt projection lamp, 2" lens. Comes complete with power cord and empty 1600' reel. Operates on either AC or DC, and has power rewind. A compact and convenient outfit. Our item No. 459. Price..... **\$129.95**

VICTOR 40A

16mm. sound projector with 12" speaker, 5 watt amplifier, 40" speaker cable, 750 watt projection lamp, 2" lens. Operates at either sound or silent speed in reverse and has power rewind. Empty 1600' reel and power cord included. AC only. Our item No. 447. Price..... **\$139.95**

DE VRY RS

16mm. sound projector with 10" speaker, 30 watt amplifier output, 50" speaker cable, 750 watt projection lamp, 2" lens, 1600' empty film reel, and power cord. Operates at either sound or silent speed on AC only. Our item No. 384. Price..... **\$119.95**

DE VRY RS

16mm. sound projector with 12" speaker, 30 watt amplifier capacity, 50" speaker cable, 750 watt projection lamp, 2" lens, 1600' empty film reel, and power cord. Operates at either sound or silent speed on AC only. Our item No. 389. Price..... **\$119.95**

VICTOR 25AC

16mm. sound projector with 10" speaker, 40" speaker cable, 750 watt projection lamp, 18 watt amplifier capacity, 2" lens, empty 1600' film reel, and power cord. Operates at either sound or silent speed and has power rewind. AC only. Our item No. 453. **\$129.95**
Price.....

BELL AND HOWELL 138

16mm. sound projector with 12" speaker, 100" speaker cable, 12 watt amplifier capacity, 750 watt projection lamp, and 2" lens. Comes complete with empty 1600' film reel and power cord. Operates at either sound or silent speed and in reverse, has power rewind. AC only. Our item No. 480. Price..... **\$149.95**

VICTOR 25

16mm. sound projector with 10" speaker, 50" speaker cable, 750 watt projection lamp, 18 watt amplifier capacity, 2" lens, empty 1600' film reel, and power cord. Operates at either sound or silent speed and has power rewind. AC-DC. Our item No. 485. Price..... **\$119.95**

VICTOR 40A

16mm. sound projector with 12" speaker, 12 watt amplifier capacity, 40" speaker cable, 750 watt projection lamp, 2" lens, power cable, and empty 1600' reel. Operates on AC only. Runs at either sound or silent speed or in reverse and has power rewind. Our item No. 419. **\$139.95**
Price.....

MOVIE MITE 63LM

16mm. sound projector contained in one case, with 4" speaker, 10" speaker cable, 300 watt lamp, and 2" lens. Operates at either sound or silent speed and has power rewind. AC or DC. An ideal unit for the home or for small groups, or for anyone who travels. Comes complete with power cord and empty 1600' film reel. Our item No. 450. Price..... **\$139.95**

VICTOR 38

16mm. sound projector with 30 watt amplifier, 12" speaker, and 30" speaker cable. Has 750 watt lamp, 2" lens, power cord and empty 1600' reel. Operates on AC only at either sound or silent speed and has power rewind. Our item No. 435. Price..... **\$129.95**

VICTOR 40B

16mm. sound projector with 12" speaker, 40" speaker cable, 12 watt amplifier capacity, 750 watt projection lamp, 2" lens, power cord and empty 1600' reel. Operates on AC only at either sound or silent speed or in reverse and has power rewind. Designed for large auditorium and commercial use. Our item No. 457. **\$139.95**
Price.....

DE VRY RS

16mm. sound projector with 12" speaker and 30 watt amplifier capacity, 750 watt projection lamp, 2" lens, 50" speaker cable, power cord, and empty 1600' reel. Operates at either sound or silent speed on AC only. Our item No. 422. **\$119.95**
Price.....

AMPRO YSA

16mm. sound projector comes fully equipped with empty 1600' reel, power cord, 2" lens, 750 watt projection lamp, 15 watt amplifier capacity, 50" speaker cable, and 12" speaker. Operates on AC only at either sound or silent speed and in reverse. It has power rewind. Our unit No. 472. **\$149.95**
Price.....

NATCO 3030

16mm. sound projector contained in one case, with 8" speaker, 40" speaker cable, and 5 watt amplifier. Has 2" lens and 750 watt projection lamp, but will handle 1000 watt. Operates at either sound or silent speed on AC or DC and has power rewind. Comes with empty 1600' reel and power cord. Our item No. 471. **\$149.95**
Price.....

VICTOR 40A

16mm. sound projector with 12" speaker, 50" speaker cable, 750 watt projector lamp, 12 watt amplifier capacity, 2" lens, empty 1600' film reel, and power cord. Operates in reverse, at either sound or silent speed, and has power rewind. AC only. Our item No. 474. **\$139.95**
Price.....

NATCO 3015

16mm. sound projector equipped with 25 watt amplifier, 30" speaker cable, 2" lens, 750 watt projection lamp, and 30 watt projector lamp. Operates on AC current only, at sound and silent speeds, and has motor-driven rewind. Comes complete with power cord and empty 1600' reel. Our item No. 404. **\$149.95**
Price.....

VICTOR 40B

16mm. sound projector with 12" speaker, 40" speaker cable, 28 watt amplifier capacity, 750 watt projection lamp, 2" lens, empty 1600' film reel, and power cord. Operates at either sound or silent speed in reverse, and has power rewind. AC only. Our item No. 476. **\$139.95**
Price.....

Please order by number and projector make and model.

BUYS IN 2" X 2" COLOR SLIDES

Here are more than 100 sets of beautiful color slides at an almost unbelievable price. Everyone can afford to own sets at this bargain figure. They are of top quality — and look at the wide range of subjects! You can view these on a Pictar Viewer described on this page, or project them in your own slide projector. Each set consists of 10 full color 2x2 mounted slides. The list price on these is \$1.00 per set.

Blackhawk has them for you at only

89c per set

Please order by number and title.

Traveling in America

- S-1 ALONG NEW YORK'S HUDSON RIVER
- S-2 RODEO IN CALIFORNIA
- S-3 AROUND NEW YORK CITY
- S-4 TIMES SQUARE TO CENTRAL PARK
- S-5 SALT LAKE CITY, UTAH
- S-6 MAGNIFICENT NIGARA FALLS
- S-7 HOLLYWOOD TO 'FRISCO
- S-8 NEW YORK CITY — MIDTOWN WESTSIDE
- S-9 NEW YORK CITY — MIDTOWN EASTSIDE
- S-10 NEW YORK CITY — UPTOWN
- S-11 NEW YORK CITY — FINANCIAL DISTRICT
- S-12 CHICAGO, ILLINOIS
- S-13 NOTRE DAME UNIVERSITY
- S-14 DENVER, COLORADO
- S-15 WISCONSIN DELLS
- S-16 PETRIFIED FOREST
- S-17 MACKINAC ISLAND, MICHIGAN
- S-57 BRYCE CANYON NATIONAL PARK
- S-58 GRAND CANYON NATIONAL PARK
- S-59 GRAND TETON NATIONAL PARK
- S-60 MT. RAINIER NATIONAL PARK
- S-61 GLACIER NATIONAL PARK
- S-62 THE SPECTACULAR GRAND TETONS
- S-63 WINTER SPLENDORS OF THE GRAND TETONS
- S-64 MOJAVE DESERT SNOW SCENES
- S-65 CRATER LAKE NATIONAL PARK
- S-66 ZION NATIONAL PARK
- S-67 YELLOWSTONE NATIONAL PARK
- S-68 YOSEMITE NATIONAL PARK
- S-69 SEQUOIA NATIONAL PARK
- S-70 SANTE FE, NEW MEXICO
- S-71 LOS ANGELES, CALIFORNIA
- S-72 HOLLYWOOD, CALIFORNIA
- S-73 SAN DIEGO, CALIFORNIA
- S-74 MIAMI, FLORIDA
- S-75 ST. AUGUSTINE, FLORIDA
- S-76 TARPON SPRINGS, FLORIDA
- S-77 ST. PETERSBURG, FLORIDA
- S-78 KEY WEST, FLORIDA
- S-79 CYPRESS GARDENS, FLORIDA
- S-80 DAYTONA BEACH, FLORIDA
- S-81 SILVER SPRINGS, FLORIDA

- S-82 MODELS, CYPRESS GARDENS, FLORIDA
- S-83 RARE BIRD FARM, MIAMI
- S-84 FLORIDA INDIANS AND VILLAGES
- S-85 PARROT JUNGLE, MIAMI
- S-86 ALLIGATOR AND OSTRICH FARM
- S-87 FLORIDA BOATS (Luxury Fishing Craft)
- S-88 ARKANSAS OZARKS
- S-89 OKLAHOMA
- S-90 NEW ORLEANS, LA.
- S-91 ABRAHAM LINCOLN IN ILLINOIS
- S-92 ROCKY MOUNTAIN NATIONAL PARK
- S-93 COLORADO
- S-94 GARDEN OF THE GODS
- S-95 ROCKY MOUNTAIN RAMBLINGS
- S-101 NEW YORK CITY
- S-102 MASSACHUSETTS
- S-103 BOSTON, MASS.
- S-104 SCENIC NEW HAMPSHIRE
- S-105 WINTER IN VERMONT
- S-106 PHILADELPHIA, PENNA.
- S-107 WILLIAMSBURG, VA.
- S-108 MT. VERNON, VA.
- S-109 HISTORICAL OLD VIRGINIA
- S-110 SKYLINE DRIVE, SHENANDOAH NAT'L PARK, VA.
- S-111 GREAT SMOKY MOUNTAINS
- S-112 THE BEAUTIFUL OHIO (Ohio River Scenes)
- S-113 ACADIA NATIONAL PARK (Maine)
- S-114 CHERRY BLOSSOM TIME IN WASHINGTON, D.C.
- S-115 NIAGARA FALLS, (Set No. 2)
- S-116 WASHINGTON, THE CITY BEAUTIFUL
- S-117 WASHINGTON, THE RENOWNED CITY
- S-118 NIAGARA FALLS (Set No. 1)

For Children

- S-45 DAY AT THE CIRCUS
- S-46 UNDER THE BIG TOP
- S-47 STORY OF PINNOCHIO
- S-48 PETER RABBIT
- S-49 TARZAN
- S-50 FUN AT THE FAIR
- S-54 BROOKFIELD ZOO
- S-55 BROOKFIELD ZOO

Traveling Abroad

- S-18 PARIS AND NOTRE DAME CATHEDRAL
- S-19 LANDMARKS IN PARIS
- S-20 PARIS AND POINTS OF INTEREST
- S-21 LOUVRE AND RIVER SEINE
- S-22 SCENES IN MADRID
- S-23 VISITING BLARNEY CASTLE
- S-24 PAST AND PRESENT IN LIMERICK
- S-25 ROME AND LANDMARKS
- S-26 ROME, RUINS, MT. VESUVIUS
- S-27 ROME, HAS ANCIENT SPLENDOR
- S-28 VATICAN CITY AND RELIGIOUS ROME
- S-29 ROME — THE OLD AND NEW
- S-30 GENOA — AND COLUMBUS
- S-31 VENICE, CITY OF CANALS
- S-32 PYRAMIDS TO CAIRO
- S-33 CAIRO — ANCIENT AND MODERN
- S-34 LANDMARKS ON THE NILE
- S-35 STREET SCENES IN BOMBAY
- S-36 MOUNTAINOUS SWISS MAJESTY
- S-37 SWISS PANORAMA
- S-38 ATHENS AND THE PAST
- S-39 MEXICO — TOURIST PARADISE
- S-40 TOURING MEXICO
- S-41 BERMUDA — VACATION PLAYGROUND
- S-42 CUBA — SIGHTSEEING HAVANA
- S-43 CLASSIC ENGLAND
- S-44 HAIFA AND TEL AVIV
- S-46 ALASKA
- S-47 HAWAII
- S-48 SCENIC HAWAII, AROUND HONOLULU
- S-49 NASSAU
- S-100 QUEBEC CITY, CANADA

Show Girls

- S-51 PIN UP GIRLS
- S-52 BACKSTAGE
- S-53 ICE CAPADES

Religious

- S-56 PASSION PLAY

PICTAR VIEWER

for 2"x2" slides

A convenient, lightweight viewer for 2"x2" slides, streamlined in design, made of molded plastic. Makes possible enlarged viewing of any 2"x2" slide against any light source such as window or lamp.

E-58 PICTAR VIEWER, purchased alone \$1.00

E-58 PICTAR VIEWER, in conjunction with any one set of 2"x2" slides listed on this page, only \$1.79

U.S.C. School of Cinematic Arts
Hugh M. Hafner Motion Image Institute

Lobster

USED 100' R-I MUSICALS IN PACKAGES

These films were originally produced by some of the leading 16mm production companies in the country for projection in coin-operated Automat machines. When projected on ordinary 16mm projectors, the image is reversed on the screen. Usually the only place you will notice any difference is in the titles — the lettering will appear backwards on your screen.

There may be, without notice, occasional substitutions of one or more titles in our package because we are temporarily out of stock on a particular film. However, we assure you that any substitutions will be of similar type and of the same or greater value.

If you decide, after viewing any of these packages, that you want to keep only part of the package, we will charge you \$1.98 for each R-I Sound Musical Film you retain.

These films are licensed for non-theatrical use only, and cannot be shown on television or theatrically.

Chuckles

101 — WHAT THE COUNTRY NEEDS (Martha Tilton and Vince Barnett); 1624 — TYRONE SHAFIRO (Willie Howard); 3607 — WHO THREW THE OVERALLS IN MRS. MURPHY'S CHOWDER (The Maxwell Girls); 4770 — ALABAMA BOUND (Jackie Greene); 6394 — EGGS, DADDY & PHEE (Nick Cochane, the Mercer Brothers, and Tom Herbert); 1307 — BOW THAT ROWBOAT (The Murphy Sisters); 8206 — LAUGH, LAUGH, LAUGH; 10005 — JIVERS' HOLIDAY (Peggy and Penelope); 12706 — I'M A SHY GUY (Gale Storm and Ray Whittell); 15702 — OH, YOU PRETTY WOMEN (Nick Cochane); 15705 — I WANT TO BE BAD (Gene Austin and Doris Sberill); 16905 — PLAYMATES (Billy MacDonald and his Highlanders).

SDU 2081 — CHUCKLES PACKAGE, containing twelve used 100' R-I Sound Musical Films, is priced at **\$13.95**

Comedy

501 — ZIG ME BABY WITH A GENTLE ZAG (Gai Moran and Danny Hackett); 4202 — THE FELLA WITH THE FIDDLE (Tex Allen); 5706 SPEAKY SPOKE (Mabel Todd and Lina Barrett); 5108 HE PLAYS GN RUMMY (Gale Moran and Iris Dawson); 8905 — I LOVE RADIO COMMERCIALS (The Excels and Betty); 9602 — SAN SALVADOR (Peggy and Penelope); 10104 — SWINGOMANIA (Huffman and Keys); 10908 — THE HEATS ON AGAIN (The Three Heat Waves); 11405 — OUR TEACHER (Honey Youngman); 21307 — SATURDAY NIGHT IN OUR HOME TOWN (Eppy Pearson); 22505 — BROADWAY AND MAIN (Gloria Parker and Stepin Fetchak); 24505 — IT'S ON THE HOUSE (Bainy Aton Train).

SDU 2082 — COMEDY PACKAGE, containing twelve used 100' R-I Sound Musical Films, is priced at **\$13.95**

Cuties of the Chorus

1701 — BEND DOWN SISTER (Harry Harris and Suzanne Ridgeway); 2904 — I LIKE A BALALAIKA (The King Men); 3103 — COCKTAILS FOR TWO (Bob Hughes); 5103 — HOP, SKIP AND JUMP (Charlie Spink and his Orchestra); 5508 — CRAZY QUIZ (Bob Hughes); 6404 — MY SHAWL (Borah Minnervich and his Harmonica Rascals); 7002 — OH GEE, OH GOSH, OH GOLLY, I'M IN LOVE (Mary Burton); 7605 — THERE'S A PAMPAS MOON ON THE CAMPUS (Diana Del Rio); 9708 — I OUGHT TO DANCE (Ginger Dulin); 13906 — CHOP CHOP (Winnie Hoveler Dancers); 14605 — BROOM AND PAN (Gip Pearson); 20605 — STARBUCK (Harry Cool).

SDU 2083 — CUTIES OF THE CHORUS PACKAGE, containing twelve used 100' R-I Sound Musical Films, is priced at **\$13.95**

Cowpoke

1706 — CALL OF THE CANYON (Four King Sisters); 1903 — TAKE ME BACK TO MY BOOTS AND SADDLE (Carson Robison and his Buckaroos); 1907 — THE SINGING HILLS (Louise Johnston Singer); 2206 — CARRY ME BACK TO THE LONE PRAIRIE (Carson Robison and his Buckaroos); 2504 — WHEN IT'S SPRINGTIME IN THE ROCKIES (Carson Robison and his Buckaroos); 4705 — GIT ALONG LITTLE PONY (The Wabbits Train); 6101 — GEEF IN THE HEART OF IDAHO (Connie Haines); 8008 — JINGLE JANGLE JINGLE (Dick Thomas); 9704 — WHERE THE MOUNTAINS MEET THE SKY (Dick Thomas); A LASSO AND A LASS (Marguerite James); GIRLS FROM AMARILLO (Red Stanley and his All-Girl Orchestra).

SDU 2083 — COWPOKE PACKAGE, containing twelve used 100' R-I Sound Musical Films, is priced at **\$13.95**

ALL FILMS LISTED ON THIS PAGE ARE GOOD USED REVERSE-IMAGE 16mm. SOUND PRINTS

BLACKHAWK FILMS INC.
DAVENPORT, IOWA

Darktown Strutters

4907 — BY AN OLD SOUTHERN RIVER (Bill Robinson); 5605 — A CLOSE SHAVE (Aurea Greer and Leloy Blumfield); 5902 — HARLEM RHYMBA (The Choralists); 10107 — TWEED ME (The Choralists); 10704 — RUG CUTTERS HOLIDAY (The Hep-Cats); 12205 — POPPIN' THE CORK (The Sopa Strutters); 13408 — RHYTHM OF THE RHYTHM BAND (The Musical Madcaps); 13908 — JUMPIN' JACK FROM HAGENSBAG (The Young Timonians); 14308 — CHATTER (The Sopa Strutters); 88008 — NEVER TOO OLD TO SWING (Timy Grimes); 89808 — YANKEE DOODLE NEVER WENT TO TOWN (The Finney Trio); 18M1 — BOOGIEMANIA (The Sam-Tan-Ten).

SDU 2084 — DARKTOWN STRUTTERS PACKAGE, containing twelve used 100' R-I Sound Musical Films, is priced at **\$13.95**

Emerald Isle

405 — McNAMARA'S BAND (Mitchell Ayres and his Orchestra); 707 — IRISH WASHWORMAN (The Four King Sisters); 2402 — MOLLY MAJON (Michael Lounsbury); 3308 — IT'S A GREAT DAY FOR THE IRISH (Gai Moran); 3502 — WHEN PADDY MCGINTY PLAYS THE HARP (Gai Moran); 4003 — McNAMARA'S BAND (Gai Moran); 5505 — WHEN IRISH EYES ARE SMILING (Donald Novis); 6606 — THE KERRY DANCE (Kay Lawrence); 7405 — PADDY CALLAHAN HAS JOINED THE ARMY (John Feeney); 8106 — LITTLE TOWN IN OLD COUNTY DOWN (John Feeney); 14905 — COME TO THE FAIR (John Feeney); 20003 — THAT'S AN IRISH LULLABY (Jerry Cooper).

#16 SDU 2086 — EMERALD ISLE PACKAGE, containing twelve used 100' R-I Sound Musical Films, is priced at **\$13.95**

Flying Feet

708 — HOLD THAT TIGER (Victor Young's Orchestra); 203 — JAZZ ETTIE (Billy Scott); 2008 — I HEAR ME HE (Grace McDonald and Wrenley Adams); 4103 — I WANT A GIRL LIKE ANNIE LAURIE (Dick Hogan, Vision Fay, and Henry King's Orchestra); 4201 — B-I, BI (Bob Chatterfield and his Orchestra); 6107 — FAREWELL BLUES (Tommy Reynolds and Summie O'Day); 10208 — THE BETTER HALF (Lola Mores); 19501 — MISTERIO (Grace Puggs and Igor); 11808 — GRANDPAPPY'S BIRTHDAY (Shippers Walsh); 12305 — JIVERBO (Harry Day and Della); 12403 — DANCE COMIQUE (The Eltons); 12907 — CALGHT BETWEEN (Healy Brooks) (Jerry Cooper).

SDU 2087 — FLYING FEET PACKAGE, containing twelve used 100' R-I Sound Musical Films, is priced at **\$9.98**

Girls, Girls, Girls

803 — 1 LOOK AT YOU (Rita Rio with Alan Ladd); 1507 — RAIN ON THE ROOF (Maxine Gray); 5405 — THE TINKLE SONG (The Maxwell Girls); 7404 — YA SURE YOU BETCHA (Greta Granstedt); 8801 — SPORTS A LA MODE (Marcell Abbott Dancers); 9401 — SWING IT MR. SCHUBERT (Carole Adams); 9702 — ARE YOU HAVING ANY FUN (Ruth Clayton); 10302 — STICKS AND STONES (Rita Rio and her Orchestra); 10902 — 1 LOVE YOU MUGH TOO MUGH (Dora Schuster and Bill Swinnheart); 12406 — HAPPY LANDING (Jane Taylor Girls); 12501 — PATTY CAKE BAKER MAN (Sugar Girls); 12604 — YODEL (Rosalee Allen).

SDU 2088 — GIRLS, GIRLS, GIRLS PACKAGE, containing twelve used 100' R-I Sound Musical Films, is priced at **\$13.95**



Scene from "Bend Down, Sister" in Cuties of the Chorus Package

USC School
of Cinematic Arts
Hugh A. Hefner Moving Image Archive

Good Old Days

1012 — MY LITTLE GIRL (*The Elton Boys*); 1408 — SEVEN BEERS WITH TWO (*The Elton Boys*); 3507 — A BICELE BELT FOR THE WRONG MAN (*Candy Walker*); 3801 — DON'T RUN DOWN A WOMAN (*Romaine Stevens*); 3806 — SWEET ADELINE (*The Elton Boys*); 6802 — THE FARMER'S DAUGHTER (*Candy Walker*); 8105 — THE BOWERY (*Earl Conroy*); 11601 — A RING (*Candy Walker*); 15801 — WIN, STREL MELODIES (*Billy McDonald*); 16202 — THE GREAT BIG SAW CAME NEARER AND NEARER (*Candy Walker*); 16702 — A BIRD IN A GILDED CAGE (*The Four Lady Killers*); 16703 — MY BROTHER JACK (*Tom Gilman, George Shelton, Romaine Stevens*).

SDRU 20089 — GOOD OLD DAYS PACKAGE, containing twelve used 100' R-I Sound Musical Films, is priced at **\$13.95**

Gypsy Dances

2406 — WHEN A GYPSY MAKES HIS VIOLIN CRY (*Emery Deutsch and his Orchestra*); 2506 — TWO GUITARS and DARK EYES (*Emery Deutsch and his Orchestra*); 17405 — GYPSY CAMPEIRE (*Claudia Corrali*).

SDRU 200511 — GYPSY DANCES PACKAGE, containing three used 100' R-I Sound Musical Films, is priced at **\$3.89**

Hillbilly

2002 — THERE'S A HOLE IN THE OLD OAKEN BUCKET (*Florence Gill, Reud Harper*); 3801 — LISTEN TO THE MOCKING BIRD (*The Kora Koblens*); 4101 — THEY CUT DOWN THE OLD PINE TREE (*Frank Novak and his Rostin's Tonters*); 4308 — BARN DANCE FOLKIES (*Frank Novak and his Rostin's Tonters*); 5008 — THE MARTINS and THE COYS (*The Inters*); 5701 — BEARCAT MOUNTAIN GAL (*Candy Walker*); 8408 — MY DARLING, CLEMENTINE (*The Fashionars*); 9604 — HILLBILLY HOSKOW (*Tom Emerson and his Hillbilly Band*); 13004 — CHICKEN REEL (*The Rhythmairs and Godfrey Danvers*); 16905 — THEY PLANTED A TREE IN THE VALLEY (*Nick Cochran*); 21905 — SANTA'S IN THE DOGHOUSE NOW (*The Bearers Boys*); 23604 — PAYDAY ROLLS AROUND (*Caroline Cotton and Dance Spritzins*).

SDRU 200812 — HILLBILLY PACKAGE, containing twelve used 100' R-I Sound Musical Films, is priced at **\$13.95**

Hit Parade

604 — LOVE TURNS WINTER INTO SPRING (*Martha Tilton*); 804 — AMAPIOLA (*Gene Gordon and his Orchestra*); 1204 — THE SAME OLD STORY (*Dick Cannon*); 1405 — ST. LOUIS BLUES (*Alvino Rey*); 2401 — LET'S GET AWAY FROM IT ALL (*The Martins*); 4402 — WAY DOWN YONDER IN NEW ORLEANS (*Gaye Divon*); 5307 — JEALOUS (*Mary Brian with Stan Kenton and Hal Burne*); 6007 — STORMY WEATHER (*Sage Kawe*); 9501 — MOONLIGHT BECOMES YOU (*Eddy Howard*); 15401 — SING, SING, SING (*George Munroe*); 19604 — TICO, TICO (*Lee Sullman*); 21904 — LULLABY OF BROADWAY (*The Mel-Tones*).

SDRU 200813 — HIT PARADE, containing twelve used 100' R-I Sound Musical Films, is priced at **\$9.98**

Hot Licks

206 — BOARDWALK BOOGIE (*Wally Bradley*); 402 — TWELFTH STREET RAG (*Buddy Rogers*); 4603 — NIGHT RIDE (*The Seimprechts*); 5001 — LET ME OFF UPTOWN (*Gene Krupa*); 5405 — MINNIE, THE MOOCHER (*Cab Calloway*); 5407 — THANKS FOR THE BOOGIE RIDE (*Gene Krupa*); 6401 — BASIN STREET BOOGIE (*Wally Bradley*); 10904 — DOWN, DOWN, DOWN (*Luigi Wildans*); 11005 — VINE STREET BLUES (*Wesley Mannone*); 13501 — CHANT OF THE JUNGLE (*Leers Clinton*); 13902 — ANVIL CHORUS (*Al Donahue*); 20M3 — COUNT ME OUT (*Red Allen and J. C. Higginbotham*).

SDRU 200879 — HOT LICKS PACKAGE, containing twelve used 100' R-I Sound Musical Films, is priced at **\$9.98**

Mountain Music

1203 — SKIP TO MY LOU (*The Martins*); 3705 — FOR RED SELLIES HONOR (*Emery Deutsch*); 3904 — THE OLD APPLE TREE (*Frank Novak's Rostin's Tonters*); 4904 — WHERE THE SWEET MAMAS GRO (*The Kora Koblens*); 9804 — RIDIN' THE RED CABOOSE (*Tom Emerson and his Hillbilly Band*); 10405 — HILLBILLY BALLERINA (*Candy Walker*); 12405 — CLEMENTINE (*The Marshall*); 14504 — LITTLE BROWN JUG (*Emerson's Mountaineers*); 16006 — I WISH I HAD DIED IN MY CRADLE (*Emerson's Mountaineers*); 16405 — THAR SHE COMES (*Frank Novak and his Rostin's Tonters*); 19805 — I WANT A PIECE OF BOTTOM LAND (*Denver Darling*); 21802 — WHY DID I KISS THAT GIRL? (*The Bearers Boys*).

SDRU 200815 — MOUNTAIN MUSIC PACKAGE, containing twelve used 100' R-I Sound Musical Films, is priced at **\$13.95**



Stone from "There's a Hole in the Old Oaken Bucket" from Hillbilly Package

Musical Curies

101 — SWEET SUE (*Lorraine Page Girl Orchestra*); 602 — MY O'DAY (*Dick Todd*); 1202 — OH, MARIE (*Tom Pastor Band*); 5001 — TINI (*Buddy Rogers*); 6705 — LORETTA (*Ozzie Nelson's Orpheus Billie Marshall, Don Wilson, and Ronnie Knepper*); 8007 — MARY Alexander and his Orchestra); 9508 — MABEL AT THE BEAUTY (*Barbara Lenz*); 12404 — PADDLIN' MADELINE HOME (*Billie Marshall*); 16604 — NOLA (*Vivian Lopez*); 27201 — MABEL, MABEL, and his Orchestra with Terry Fisher).

SDRU 200816 — MUSICAL CURIOS PACKAGE, containing twelve used 100' R-I Sound Musical Films, is priced at **\$9.98**

Night Spot

2501 — HERE'S LOVE IN YOUR EYE (*Benny Fields*); 2901 — KISS ME (*Martha Tilton*); 3105 — A LITTLE JIVE IS GOIN' ON (*Martha Tilton*); 3508 — I'M STEPPING OUT WITH A TONIGHT (*Bert Franklin*); 3901 — LOVE ME A LITTLE, LITTLE (*Hughes*); 4007 — MY MAN (*Gertrude Nieten*); 5507 — GAY RAIN (*Gene Krupa*); 5905 — BO HUM (*The Dining Salers*); 9608 — ONION TIME (*The Danvers Sisters*); 12102 — WHAT HAS THE GOT? (*Yola Galle*); 19204 — BEYOND THE BLUE HORIZON (*Lee Sullman*).

SDRU 200817 — NIGHT SPOT PACKAGE, containing twelve used 100' R-I Sound Musical Films, is priced at **\$9.98**

Old Favorites

703 — I WANT A GIRL (*The Elton Boys*); 2601 — IN THE GOOD SMERTHINE (*Men and Mads of Melody*); 2805 — THERE'S NO LIKE THE SMILE OF THE IRISH (*Lanny Ross*); 3005 — SIDEWALK NEW YORK (*Michael Bartlett*); 3901 — WAITING FOR THE RO LEE (*The Marshall*); 4204 — COMIN' THRU THE RYE (*Charlie O'Connell*); 4307 — I DON'T TRUST THE MEN (*Candy Walker*); 10804 — GRAY HOME IN THE WEST (*Michael Bartlett*); 11206 — BARBER (*Craig Nazareo and quartet*); 11408 — ASK DAD (*Cross and Dunn*); 11501 — THE MAN ON THE FLYING TRAPEZE; 27007 — AFTER THE (*The Goodwiner Quartet*); 27007 — AFTER THE (*Larry McMahon*).

SDRU 200818 — OLD FAVORITES PACKAGE, containing twelve used 100' R-I Sound Musical Films, is priced at **\$9.98**

Pin-Up

2006 — I HEAR A RHAPSODY (*Maxine Conrad*); 5902 — SMILE (*Gene Krupa and his Orchestra*); 5904 — THE WHISTLER'S M IN-LAW (*Gene Krupa and his Orchestra*); 5905 — TEA ON THE T (*Marlene Marzwell*); 4104 — DINGO-LAYO (*The Carnival Chorus*); BIG ROCKS, CANDY MOUNTAIN (*Mary McGinty*); 6302 — A DI HEARTY DO (*Frank and Vera Giff*); 8403 — THE TEXA (*Gene Krupa*); 10804 — SHIMMOLE (*Wesley Mannone*); 11206 — I BEAUTIFUL MERMAID (*David Brooks*); 19102 — I WAS BORN A LUCKY STAR (*Valley Girls*); 22601 — YOU STEPPED RIGHT THE PICTURE (*Lee Sullman*).

SDRU 200820 — PIN-UP PACKAGE, containing twelve used 100' R-I Sound Musical Films, is priced at **\$9.98**

ALL FILMS LISTED ON THIS PAGE ARE GOOD USED REVERSE-IMAGE 16mm. SOUND PR

Pickin' the Strings

2205 — IN AN EIGHTEENTH CENTURY DRAWING ROOM (Dave Schooler and his Swinghearts): 8805 — BANJOMANIA (Eddie Peabody): 27603 — RUSSIAN GUITARS (The Gondoliers and Clarise Daley):
SDRU 200819 — PICKIN' THE STRINGS PACKAGE, containing three used 100' R-I Sound Musical Films, is priced at..... \$3.89

Polka

2103 — FIDDLE POLKA (Lanny Ross): 5207 — THE NADOCKY (Green Williams and Charlie Devolin): 10502 — JOLLY JOE (The Balatons): 15001 — PUMPERNICKEL POLKA (Ann Parker): 15901 — LUCKY POLKA (Al Trave and his Silly Symphonists): 16504 — POLKA DOT POLKA (Carroll Hood):
SDRU 200821 — POLKA PACKAGE, containing six used 100' R-I Sound Musical Films, is priced at..... \$7.95

Pounding the Keys

16884 — MINUTE WALTZ (Vince Lopez): 22003 — JUNE COMES AROUND EVERY YEAR (Emil Coleman): 22903 — FOUR LETTERS (Gloria Parbet):
SDRU 200830 — POUNDING THE KEYS PACKAGE, containing three used 100' R-I Sound Musical Films, is priced at..... \$3.89

'Round the World

404 — PAN-AMERICONGA (Rita Rio and her Orchestra): 1804 — LILY HOT FROM CHILE (Eva Ortega): 2305 — CHOP FOOEY (The Four King Sisters): 2702 — LOCH LAMOND (Martha Tilton): 2807 — HAWAIIAN WAR CHANT (Gertrude Nielsen): 2904 — I LIKE A BALALAIKA (The King's Men): 4507 — DEAR OLD SOUTHLAND (The Disasters): 4601 — ROBERGER SCHOTTISCHE (The Maxwell Girls): 7004 — LITTLE DUTCH MILL (Mary Gilbert): 7204 — HAVIN' A TIME IN HAVANA (Marvin Maxwell): 9107 — THAT NIGHT IN MANHATTAN (Mark Hanna and Virginia Vale): 11304 — RUSSIAN REVELS (The Lucky Girls):
SDRU 200822 — 'ROUND THE WORLD PACKAGE, containing twelve used 100' R-I Sound Musical Films, is priced at..... \$9.98

Sepia Celebrities

5203 — RIDE RED RIDE (The Chantiers): 5402 — OH, SUSANNA (The Chantiers): 6203 — YOUR FEET'S TOO BIG (Pat Waller): 6602 — LAZY BONES (Dorothy Dandridge): 4703 — TOOT THAT TRUMPET (Deep River Boys): 6103 — SKUNK SONG (Cab Calloway): 6306 — THE WALLS KEEP TALKING (Paul White and Artie Brandom): 7006 — THAT OL' GHOST TRAIN (Les Hite and his Orchestra): 8907 — CARAVAN (The Mill Brothers): 13108 — BABBLING BESS (The Chantiers): 17208 — DINAH (Bob Howard): 20508 — DRY BONES (Delta Rhythm Boys):
SDRU 200823 — SEPIA CELEBRITIES PACKAGE, containing twelve used 100' R-I Sound Musical Films, is priced at..... \$13.95

Sultry Senoritas

107 — HAVANA IS CALLING ME (Bernice Parks and Theodore): 205 — RHUMBA SERENADE (New and Charisse): 506 — ADIDA (Rita Rio and Alvin Baldwin): 808 — BAHIANA (Yola Gali): 903 — PARAN PAN PAN (Maya Pan-American Orchestra): 1606 — MAMA, I WANT A SWEET BEARY (Eva Ortega): 2602 — TI-PI-TIN (Eva Ortega): 6805 — MEXICAN JUMPING BEAN (Noro Morales and his Band): 11002 — DARK VELVET NIGHT (Sergio de Karlo): 12807 — VAMOS A GOZAR (Varios and Vida): 13905 — TABU (Caridad Garcia): 20704 — MANICERO (The DeCastro Sisters):
SDRU 200824 — SULTRY SENORITAS PACKAGE, containing twelve used 100' R-I Sound Musical Films, is priced at..... \$9.98

Six Top Trios

18406 — EAST OF THE SUN (The Three Suns): 19605 — DARK EYES (Mull Herit Trio): 22607 — INDIANA BARN DANCE (Air Lane Trio): 26603 — SWEET SUE, JUST YOU (Charis Magnante Trio): 26907 — I GUESS I TOOK TOO MUCH FOR GRANTED (Irving Fields Trio): 211M2 — IF YOU ONLY KNEW (Aki Raba Trio):
SDRU 200826 — SIX TOP TRIOS PACKAGE, containing six used 100' R-I Sound Musical Films, is priced at..... \$7.95

Sweet and Sentimental

302 — DON'T CRY (Vincent Lopez and his Orchestra): 303 — ROMANCE (Tandy MacKenzie and Alice Avakian): 1401 — YOU WALK BY (Ded Casin and his Orchestra): 1607 — POEME (Charisse and Ford): 1702 — LAMPLIGHT (Shirley Ennis and his Orchestra): 1704 — I KNEW IT WOULD BE THIS WAY (Charisse and Ford): 1905 — TWO HEARTS THAT PASS IN THE NIGHT (Bob Hanmon): 2001 — I DON'T STAND A GHOST OF A CHANCE WITH YOU (Mary Healy and George Ford): 3006 — IT WAS WONDERFUL THEN (Bob Hanmon): 3706 — THESE ARE THE THINGS I LOVE (Lanny Ross): 3808 — LET'S DREAM THIS ONE OUT (Sylvia Froas): 4302 — I DON'T WANT TO SET THE WORLD ON FIRE (Johnny Downs):
SDRU 200825 — SWEET AND SENTIMENTAL PACKAGE, containing twelve used 100' R-I Sound Musical Films, is priced at..... \$9.98

Waltz Time

901 — THE SAME OLD STORY (Joy Hodges): 1601 — SWEETHEART OF SIGMA CHI (Marion Stewart): 5107 — MAGIC OF MAGNOLIAS (Donald Novis and Charisse): 5702 — ANNIVERSARY WALTZ (Marc Plant and Helen Cole): 10508 — LULLABY OF THE RAIN (Melton Moore and Mary Dowell with Eddy Howard's Orchestra): 12804 — LET'S GET LOST (Lina Romay): 13106 — COME BACK TO SORRENTO (Al Donahue's Orchestra): 14305 — WHERE WERE YOU (Gene Grounds and Naomi Wheat): 21703 — A FRIEND OF YOURS (Gene Gray and his Casa Loma Orchestra with Ship Nelson): 22203 — I'M HOMESICK, THAT'S ALL (Gene Howard): 23501 — I DON'T KNOW WHY (Tommy Reynolds): 25901 — TAKE MY ALL (Tommy Reynolds):
SDRU 200826 — WALTZ TIME PACKAGE, containing twelve used 100' R-I Sound Musical Films, is priced at..... \$9.98

Western

12105 — MINNIE MY MOUNTAIN MOOCHER (Cliff Edwards): 14701 — PISTOL PACKIN' PAPA (Red River Dave): 15406 — THE SINGING HILLS (Art Dixon): 16701 — ELECTION DAY (Cindy Walker): 17004 — TI-YI-YIPPEE-AYE (Red River Boys): 17606 — REELING COWBOY DANCE (Red River Dave): 19106 — MONTANA PLAINS (Jimmy Wakely): 20402 — SINGING ABOUT A GAL WHO MARRIED THE 'WRONG MAN (The Cactus Cowboys): 21406 — TEXAS HOME (Marie Travis and Carolina Cotton): 22401 — CHEATIN' WOMAN BLUES (Red River Dave and his Boys): 22801 — DUDE COWBOY (Red River Dave and his Boys with Rosalie Allen): 23405 — DOWN THE TRAIL TO SAN ANTONIO (Dwain Spryngin and Carolina Cotton with The Plantation Trio):
SDRU 200827 — WESTERN PACKAGE, containing twelve used 100' R-I Sound Musical Films, is priced at..... \$13.95



Scene from "I Knew It Would Be This Way" from Sweet and Sentimental Package

ALL FILMS LISTED ON THIS PAGE ARE GOOD USED REVERSE-IMAGE 16mm. SOUND PRINTS

BLACKHAWK FILMS INC.
RAVENPORT, IOWA

USE '100' R-I SOUND MUSICAL FILMS AT NEW LOW PRICES!

YOU MAY PURCHASE ANY OF THE TITLES LISTED ON THIS PAGE AND CONTINUED PAGES AT THESE BARGAIN PRICES:

EACH: **99¢** ANY SIX FOR ONLY: **\$4.99**

DANCE BANDS

- RI-304 - BARNYARD BOUNCE (Will Bradley and his Orchestra)
- RI-302 - JOHNNY PEDDLER (Johnny Long and his Orchestra)
- RI-507 - LAST NIGHT'S GARDENIAS (Nitzler Deane)
- RI-607 - THIRTY TWO FIFTY A MONTH (Bobby Rogers and his Orchestra)
- RI-508 - ISN'T THAT JUST LIKE LOVE (Vivian Fox and Dave Scholer and his Orchestra)
- RI-1018 - PAVANNE (Dave Scholer's Melodians)
- RI-1203 - TSCHAIKOWSKIANA (Dave Scholer's Melodians)
- RI-1205 - THERE WAS A LITTLE GIRL (Mitchell Ayres and his Orchestra)
- RI-1402 - SWINGIN' AT A SNAKE (Johnny Long and his Orchestra)
- RI-1506 - FRENCH (Liz Gardner and his Orchestra)
- RI-4902 - FRAIDY CAT (Jean Peter and his Orchestra)
- RI-5102 - YOU MADE ME LOVE YOU (Gai Morgan)
- RI-3205 - WOULDST' YOU'D I NOT KISS THY HAND, O BABA (Ted Flo Rino's Orchestra with "Candy" Camille)
- RI-3508 - THAT DID IT MAKE (Tom Foster with Johnny McAlister and Leslie Hain)
- RI-3704 - COUNT ME IN (Claude Thornhill, Martin Wayne, and Buddy Stewart)
- RI-3708 - THIS IS NO LAUGHING MATTER (Mervyn Maxwell with Ted Flo Rino and his Orchestra)
- RI-5805 - I WANNA FOOT ON A FIVE (Nick Cosentino and the Mercer Brothers)
- RI-5906 - JACK AND JILL (Will Bradley and his Orchestra with Lynn Gardner and Terry Alatorre)
- RI-5103 - WHERE HAS MY LITTLE DOG GONE? (Claude Thornhill and his Orchestra)
- RI-6108 - DRINK TO ME ONLY WITH THINE EYES (Glazer Harmon, Harry Harvey and his Orchestra)
- RI-6201 - SOMEONE'S ROCKING MY DREAMBOAT (Shep Fields and his Orchestra)
- RI-6206 - SOMEONE ELSE IS TAKING MY PLACE (Ozzie Nelson and his Orchestra)
- RI-6208 - SOMEBODY NOBODY LOVES (Claude Thornhill)
- RI-6303 - I'M LONELY FOR A GUY (Ozzie Nelson and his Band)
- RI-6801 - MY LITTLE COUSIN (Peppy Mann and Tommy Taylor with Teddy Powell and his Orchestra)
- RI-7106 - SKYLARK (Sonny Dunham)
- RI-7501 - THERE WON'T BE A SHORTAGE OF LOVE (Peppy Mann, Teddy Powell and his Orchestra)
- RI-7707 - I'M AN OLD FASHIONED GUY (Dick Robertson with Johnny Manasse and his Orchestra)
- RI-8505 - I DODD IT (Joe Robinson and his Orchestra)
- RI-9001 - FOR SALE (Eddie Howard and his Orchestra)
- RI-9705 - INGENUE MEDLEY (Ray Fading's Ingenues)
- RI-11301 - THE SAINTS COME MARCHING IN (Wingy Manasse)
- RI-12805 - WATCHA KNOW (Larry Clinton and his Band)
- RI-12901 - IT'S NOTHING NEW (Al Donahue and his Orchestra)
- RI-13906 - THE NIGHT WE MET IN HONOLULU (Larry Clinton and his Orchestra)
- RI-13104 - CATERPILLAR SHUFFLE (Johnny Long and his Orchestra)
- RI-13206 - JAVA JIVE (Al Donahue and his Orchestra)
- RI-13802 - LET'S GET AWAY FROM IT ALL (Johnny Long and his Orchestra)
- RI-13805 - DIPSY DOODLE (Larry Clinton and his Orchestra)
- RI-13806 - LA ROSITA (Jimmy Dorsey and his Orchestra)
- RI-13701 - AU REET (Jimmy Dorsey and his Orchestra)
- RI-13902 - ANVIL CHORUS (Al Donahue and his Orchestra)
- RI-14002 - CHOP STICKS (Johnny Long and his Orchestra)
- RI-14105 - A WHOLE BUNCH OF SOMETHING (Jimmy Dorsey and his Band)
- RI-14302 - THE LONG AND SHORT OF IT (Johnny Long and his Orchestra)
- RI-14306 - MY BUDDY (Larry Clinton and his Orchestra)
- RI-14402 - JUMPIN' AT THE JUKE BOX (Al Donahue and his Orchestra)
- RI-14404 - SHE SHALL HAVE MUSIC (Jack Mylon's Band)
- RI-14506 - SMILES (Larry Clinton and his Orchestra)
- RI-14604 - LONESOME ROAD (Al Donahue and his Orchestra)
- RI-15002 - RHYTHM ON THE RIVER (Wingy Manasse and his Orchestra)
- RI-16004 - I LOST MY SUGAR IN SALT CITY (Wingy Manasse's Orchestra with Carmen Gray)
- RI-16102 - THAT WONDERFUL WORRISOME FEELING (Al Trace and his Orchestra)
- RI-16402 - OH! PLEASE TELL ME DARLING (Al Trace and his Orchestra)
- RI-17301 - DO NOTHING! TILL YOU HEAR FROM ME (Glen Miller Madrasians)
- RI-17304 - I'LL BE SEEING YOU (Ray Martin's Orchestra with Duke Belmont)
- RI-17406 - HOW COME YOU DO ME LIKE YOU DO (Will Bradley with Roberta Hinkle)
- RI-17602 - DEED I DO (Will Bradley and his Orchestra)
- RI-17806 - I LEARNED A LESSON (Lawrence Welk and his Orchestra)
- RI-18201 - BRIGHT SHINES THE MOON (Mopliet's Orchestra with Claudia Corvelli)
- RI-18305 - SWINGING ON A STAR (Harry LaFont's Red Jacket)
- RI-18801 - SPICY AND SPANISH (Harry LaFont's Red Jacket)
- RI-18805 - DANCE WITH A DOLLY (George Paxton with Liza Morrow and Gabriel Norans)

These films, identified as 100' R-I Sound Musical Films, are used in productions made originally by such producers as R.C.M. (Boosey & Mills); Mincos; Cameo; Screencraft and Globe for exhibition on coin-operated machines. These machines, projecting from the ground-glass screens, require the photographic image reversed. Prints show quite acceptably on any regular home sound projector, only point where the reversal is usually noted in on the main and in which you may eliminate at the time you assemble your library. Over 25-years, we have sold many scores of thousands of prints, and hundreds of customers reorder regularly.

The films listed here may be selected by individual title. Good stock hand of most of these subjects - but the listing of a few alternate desirable. We'll never substitute unless your first choices are of these 100' R-I Sound Musical Films are not supplied on reels, but individual rolls.

These films are licensed for non-theatrical use only, and cannot be shown on television or theatrically.

- RI-18201 - LET ME LOVE YOU TONIGHT (Allan Dale with George Paxton and his Orchestra)
- RI-18401 - NEVER SAY YER (George Paxton Orchestra with Liza Morrow)
- RI-20403 - FUZZY WUZZY (Don Perry Orchestra)
- RI-21707 - IT'S GOTTA BE THIS OR THAT (Keroll Coleman and his Band, June Barton)
- RI-21801 - I KNOW THAT YOU KNOW (Emil Coleman and his Orchestra)
- RI-22202 - JOSE GONZALES (Chuck Foster and his Orchestra)
- RI-23105 - UNDER THE BAMBOO TREE (Lennie Hayton)
- RI-23305 - COCKTAILS AND GO-LO-LA (Gene Krupa's Band with Carolyn Gray)
- RI-24003 - TAKE IT AND GIT (Thelma White and her All-Girl Orchestra)
- RI-24801 - DON'T BE A BABY, BABA (Joe Marnala and his Orchestra, Underwood and Ahmad Rael)
- RI-25001 - SHINE ON YOUR SHOES (Ray Baudin and his Orchestra)
- RI-25003 - ZOOT (Thelma White Orchestra with Billie Cooper)
- RI-25203 - APRIL IN PARIS (Thelma White Orchestra)
- RI-25801 - WHY DREAM OF LOVE (Dean Hudson and his Orchestra)
- RI-25805 - AH YES THERE'S GOOD BLUES TONIGHT (Liz Tilson with 35 Madmen and his Orchestra)
- RI-26007 - AZUSA (Liz Tilson with Matty Malneck and his Orchestra)
- RI-26104 - THEN IT ISN'T LOVE (Del Carter with Emale Fendi and his Orchestra)
- RI-26205 - JUST THE OTHER DAY (Liz Tilson with Matty Malneck and his Orchestra)
- RI-26801 - THE COFFEE SONG (Dorothy Claire with Matty Malneck and his Orchestra)
- RI-27303 - I'M BEING WRONG (Liz Kizart and his Orchestra)
- RI-27405 - MOON OVER MIAMI (Dean Hudson and his Orchestra)
- RI-27603 - DREAM, DREAM, DREAM (Liz Kizart and his Orchestra with the Time Teller)
- RI-27803 - LOVE MAKES THE WORLD GO ROUND (Dorothy Claire with Matty Malneck and his Orchestra)

VOCALS

- RI-105 - ROW, ROW, ROW (Ray Holmes, Rudolf Friml, Jr. and Orchestra with Rita Hayworth)
- RI-308 - JITTERBUG SENORITA (Vincent Lopez and his Orchestra with A. J. Barrett)
- RI-302 - I'M LOOKING OUT THE WINDOW (Herbie Kay and his Orchestra)
- RI-100 - MY LOST HORIZON (Les Brown and Doris Day)
- RI-101 - TYING APPLES ON A LILAC TREE (Arling Hey and his Orchestra with The King Street)
- RI-104 - LET'S GET AWAY FROM IT ALL (Liz Kizart, Marnie and Jimmy Dorsey)
- RI-105 - I'M BEING WRONG (Liz Kizart and his Orchestra)
- RI-108 - HOW DO YOU FEEL (Liz Kizart and his Orchestra)
- RI-109 - GIVE 'EM (Liz Kizart and his Orchestra)
- RI-109 - NUMBER TEN, LULLABE LANE (Marilyn Stewart and her Orchestra)
- RI-107 - PLEASE TAKE A LETTER, MISS BROWN (Lillian Loring and the Blues Walkers)
- RI-2004 - WE GOT TOGETHER (Virginia Brown, Steven Wayne, Marnie Griffin)
- RI-2005 - FERRY BOAT SERENADE (Wingy Manasse)
- RI-2107 - HUCKLEBERRY DUCK (The Martles)
- RI-2207 - IT ALL COMES BACK TO ME NOW (Tommy with Del Friml)
- RI-2285 - HOW ABOUT YOU? (Cecil Parker and Harry Lewis)
- RI-2301 - THE NIGHT IS YOUNG AND YOU'RE SO BEAUTIFUL (Liz Kizart)
- RI-2484 - JOSE O'NEILL THE CUBAN (Liz Kizart and her Orchestra)
- RI-2502 - AT A LITTLE ROADSIDE REST (Marilyn Stewart)

USCS
of Choice
High Master
All Arts
Music

LC

VOCALS (CONTINUED)

- RI-2307 - JUST A LITTLE BIT SOUTH OF NORTH CAROLINA (Patricia Elliot)
- RI-2308 - THE VOLGA BOATMAN (Vivienne Simon)
- RI-2309 - HILBILLY GRAND OPERA (Lester Walker and Zora Connor)
- RI-2310 - WE TOOK ME FOR A SLEIGHRIDE (IN THE GOOD OLD SUMMER-TIME) (Cindy Walker)
- RI-2303 - YOU'RE IN LOVE WITH EVERYONE (Bernadine Rayne)
- RI-2304 - ALDUTTY (The Sisters Brothers)
- RI-2306 - I'M NOBODY'S BABY (Candy Montgomery)
- RI-2307 - COLLEGE ECHOS (The Troggians)
- RI-2308 - YOU APPEAL TO ME (Patricia Elliot)
- RI-2309 - MISS JOHNSON PHONED AGAIN (Doris Day)
- RI-2303 - CIELITO LINDO (The Four King Sisters, Alvin Key and his Orchestra)
- RI-2302 - SPIN THE BOTTLE (Eleanor French)
- RI-2303 - FIGHT ON (College songs)
- RI-2304 - DEAREST DARREST I (The Martins)
- RI-2305 - ON THE CAMPUS (College songs)
- RI-2306 - ON TO VICTORY (College songs)
- RI-2307 - ON THE MALL (The Melodians)
- RI-2308 - I THOUGHT ABOUT YOU (Patricia Elliot)
- RI-2309 - WHY DON'T WE DO THIS MORE OFTEN (Cly Holcomb)
- RI-2304 - BILLY GOOD FELLOWS (The Harmonies)
- RI-2305 - I'M GONNA SWING MY WAY TO HEAVEN (Gaye Davis)
- RI-2306 - LOVE MARCHES ON (The Harmonies)
- RI-2307 - SHEPHERD SERENADE (Hazel Adair)
- RI-2308 - LOVE MARCHES ON (The Harmonies)
- RI-2309 - WHAT DO YOU HEAR FROM YOUR HEART? (Jane Platona)
- RI-2304 - THE LITTLE HOT DO STAND (Johnny Downs and Jean Porter)
- RI-2305 - JAZZY (The Four Brothers)
- RI-2306 - I'M JUST WILD ABOUT HARRY (Eleanor French)
- RI-2307 - LOVE ME AS I AM (Johnny Downs and Sugar Katz)
- RI-2308 - BELIEVE-BELL SERENADE (John Fischer)
- RI-2309 - BRIDIN' MY BUSINESS (The Harmonies)
- RI-2304 - LIVIN', LOVIN', LAUGHIN' (Marvella Hendricks)
- RI-2305 - MOONLIGHT SKEWBADE (Janis Novell with Stan Kamin's Orchestra)
- RI-2306 - STYUTIN' TO SOUTHERN PI (The Harmonies)
- RI-2307 - TAKE DOWN HANA (Cary Deary, Warren Hall)
- RI-2308 - YEA DARN TOOTIN', GABRIEL (Glazer Harmon, Candy Cantidie)
- RI-2309 - I SAID NO (Janis Novell)
- RI-2304 - TWO PAIR OF SHOES (Jean Porter and Larry Stewart)
- RI-2305 - MISS YOU (The Four Pinks)
- RI-2306 - I DON'T WANT TO WALK WITHOUT YOU (Key Larkin)
- RI-2307 - MR. JAMES INFIRMARY (Jerry Remick)
- RI-2308 - MOONLIGHT COCKTAIL (Brooks Clark and Dolly Mitchell with Hal Beron's Orchestra)
- RI-2309 - BREATHELESS (Laurie Bremer, Peter Geyer)
- RI-2304 - THE CONTINENTAL (The Harmonies)
- RI-2305 - CLAP, CLAP FOR RHYTHM (Ludie Bremer, The Stuart Sisters)
- RI-2306 - I AIN'T GOT NOBODY (Frances Vera)
- RI-2307 - PENNY ARCADE (Ludie Bremer and Peter Geyer)
- RI-2308 - IN THE MOOD (The Stuart Sisters)
- RI-2309 - SOUNDBY SE LOUPE NUMBER ONE
- RI-2304 - I HEAR YOU KNOCKIN' (Gene Austin)
- RI-2305 - ALL I NEED IS YOU (Gene Austin)
- RI-2306 - TAKE DOWN KALIN (Larry Carr)
- RI-2307 - SWING SHIFT, SWING (Gene Amber)
- RI-2308 - WELL ALL RIGHT (Patsy Paig)
- RI-2309 - I MET MY WATERLOO (Gene Austin)
- RI-2304 - YOU'LL HAVE TO SWING IT (Jerry Herman and Jerry Sullivan)
- RI-2305 - BISS BOOM BARBARA BROWN (Florenta and Bert)
- RI-2306 - IF I DIDN'T CARE (Lee DeLafayette, Moriel Dexter)
- RI-2307 - THE ALPHABET SONG (Lee DeLafayette, Moriel Dexter)
- RI-2308 - IF YOU BUILD A BETTER MOUSETRAP (Eleanor French)
- RI-2309 - OH DEAR, THE COUNTY FAIR (The Four Best Notes)
- RI-2304 - THAT'S THE MOON (Gene Austin)
- RI-2305 - NOBODY MAKES A PASS AT ME (Gene Austin)
- RI-2306 - RADIO PARADE (Nita Goodless)
- RI-2307 - NO ONE EVER COMES AROUND TO MY HOUSE (Carol Dexter)
- RI-2308 - WHO'S YERDOD? (Jane Trousdale)
- RI-2309 - AIR PARADE (Lee Sullivan)
- RI-2304 - ONE LOOK AT YOU (Ike Canino)
- RI-2305 - SHE SHI SOMEBODY BLABED (Wren Murray)
- RI-2306 - BANK OF LOVE (The Brothers)
- RI-2307 - GOTTA KEEP ROLLIN' (Hazel Vincent)
- RI-2308 - GLOBAL RHYTHM (The Back Avenue)
- RI-2309 - WHAT HAS THE LADY GOT (Ike Gall)
- RI-2304 - I FEAR THY KISSES (Virginia Rose and Herlin Kane)
- RI-2305 - LOOKING BACK AT IT NOW (Terry Lawlor)
- RI-2306 - YOUR SMILES MY DO (The Harmonies)
- RI-2307 - HOMESPUN (Jack Kelly and the Song Spinners)
- RI-2308 - HARD ON YOUR HEART (Yvonne Bourcier)
- RI-2309 - COSTA HUMBA (Kenny Hall)
- RI-2304 - ON TIME (Candace Ayles)
- RI-2305 - DON'T GET AROUND MUCH ANYMORE (Lola Borgen)
- RI-2306 - THEY'RE GOIN' TO BUILD A MONUMENT (Bernie Renee)
- RI-2307 - WOOD WOOD (Patsy Paig)
- RI-2308 - THE MAN ON THE FERRY (The Liberty Quartette)
- RI-2309 - LEAP YEAR LENA (Wino Reiter)
- RI-2304 - NOW (Vera Baran)
- RI-2305 - THIS IS ROMANCE (Lee Bennett with Corinne and Tita Valdez)
- RI-2306 - BUY A WINE TIME FOR A DIME (Lorraine Lee and The Four Guardians)
- RI-2307 - BIG MAN FROM THE SOUTH (Hal Stanley)
- RI-2308 - IMAGINE (Gene Austin and Doris Sherman)
- RI-2309 - WHEN I GROW UP (Patsy Brewster)
- RI-2304 - THE SEASON'S THE REASON (David Brooks)
- RI-2305 - I WISH I COULD HIDE INSIDE THIS LETTER (The Clemons Triplets)
- RI-2306 - MEXICALI ROSE (Bob River Davis and Lily Darrin)
- RI-2307 - GREEN MOON (Corinne and Tita Valdez)
- RI-2308 - EVERYDAY OF MY LIFE (Gene Austin)
- RI-2309 - OH LOOK AT ME NOW (Gene McDonald)
- RI-2304 - WHO DUNNIT (The Harmonies, Trinitas with Billie Joyce)
- RI-2305 - GOING ALL TO PIECES (Gene Austin)
- RI-2306 - LOVER, ARE YOU THERE? (Marion Colby)
- RI-2307 - GOING TO THE DEVIL AND THE DEEP BLUE SEA (Jerry Wayne)
- RI-2308 - ACCURATE-DE-ME (Candida Garcia)
- RI-2309 - PASSPORT TO HEAVEN (Lee Reynolds and Larry McMahon)
- RI-2304 - CALL TO ARMS (Candice Glenn)
- RI-2305 - SIDE BY SIDE (Nita Lurie)

- RI-10605 - COME WITH ME HONEY (Patti Claxton with The Jesters)
- RI-20103 - I'M BEGINNING TO SEE THE LIGHT (Betty Jane Brown)
- RI-20104 - KITCHY KITCHY KOO (Vivian Banner and Carol Sherman)
- RI-20105 - SWEET AND LOVELY (Harry Cood)
- RI-20106 - RHUMBA NEW YORK (Candida Garcia)
- RI-20107 - MAGIC IS THE MOONLIGHT (Vivian Banner)
- RI-21101 - BACK IN YOUR OWN BACK YARD (Jerry Cooper)
- RI-21102 - TABBY THE CAT (Rory Pearson)
- RI-21202 - I'LL REMEMBER APRIL (Irene Baldwin and Paula Grey)
- RI-21203 - TAKE IT (The Bennett Sisters)
- RI-21205 - DANCE BARY DANCE (The Mel-Tones)
- RI-21206 - IOWA (Jerry Adams)
- RI-22003 - PROVE IT BY THE THINGS YOU DO (Lee Sullivan)
- RI-22004 - JUST A LITTLE FOND AFFECTION (Vivian Banner and Kirk Wood)
- RI-22005 - NO CAN DO (Irene Baldwin)
- RI-22103 - WRITER WUNDERLAND (Irene Baldwin)
- RI-22104 - A KISS GOODNIGHT (The Barkley Sisters)
- RI-22105 - HE BROKE MY HEART (The Nelson Twins)
- RI-22106 - OH WHAT IT SEEMED TO BE (Patsy Mann)
- RI-22107 - HOT LIPS (Lillian Grey)
- RI-23105 - ONE ZY TWO ZY (Yvonne Martin and Wendy Harbo)
- RI-23107 - WABASH BLUES (The Swing Stars with Hannah Hain)
- RI-23108 - SEVEN DAYS A WEEK (Johnny Thompson and Paul Martin)
- RI-23109 - COFFEE SHOP RHYTHM (The Modernaires and Paula Kral)
- RI-23111 - I'LL SEE YOU IN MY DREAMS (Bob Kennedy with Elmer Costello)
- RI-23112 - THE MAN WITH THE WEIRD BEARD (Doris Clate)
- RI-23113 - OH, FREEDOM (Paul Kennedy with Glenn Miller's Modernaires)
- RI-23114 - ASK MY HEART (Irene Baldwin)
- RI-23115 - WHAT A LOVELY AFTERNOON (Karl Oxford and Mary Reid)
- RI-23116 - THIS IS THE NIGHT (Ike Valdez and Patricia Starr)
- RI-23117 - WHEREVER THERE'S ME, THERE'S YOU (Jerry Brown Orchestra with Terry Talbot)
- RI-23118 - IT'S A PITY TO SAY GOODNIGHT (Jean Harvey)
- RI-23119 - MY PIN UP BOY (Irene Baldwin and his Harmonic Band)
- RI-23120 - THAT'S ALL BROTHER, THAT'S ALL (The Terry Twins)
- RI-23121 - OOH OOH GEORGIE (Edna Harris)
- RI-23122 - UNDER THE WILLOW TREE (Marjorie Hare and The Paragon)
- RI-23123 - THE SOUTHERN SONG (Irene Baldwin with the Goodfellers)
- RI-23124 - HIGHLAND HARMONY (The Goodfellers)
- RI-23125 - CHI CHI CASTANETA (Marjorie Hare and The Paragon)
- RI-23126 - I DON'T SAY THAT (Marjorie Hare and The Paragon)
- RI-23127 - WHEN YOUR HEAD'S IN THE CLOUDS (Johnny Thompson and Marian Kerlan)
- RI-23128 - LEARNING TO SPEAK ENGLISH (Bertha Service with Eddie Lehman)
- RI-23129 - BLOW THE MAN DOWN (Marjorie Hare and The Paragon)
- RI-23130 - TENEVANT SYMPHONY (Bob Carroll)

INSTRUMENTAL GROUPS

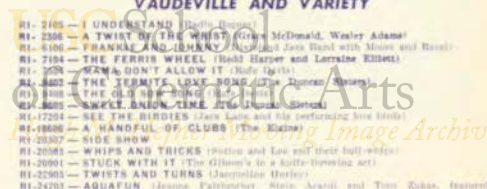
- RI-8002 - LULLABY IN SWING (The Melodians)
- RI-7005 - BRACKEN BRACKENBY (Irene Baldwin and his Harmonic Band)
- RI-15002 - MUSICAL JOKE (The Mills Philharmonic)
- RI-18005 - BUGLE CALL BAD (Hazel Mizner and his Harmonic Band)
- RI-12203 - RUSSIAN SHRAPNEL (Irene and her Yalies)
- RI-13224 - RUSSIAN SHRAPNEL (Irene and her Yalies)
- RI-15001 - SHOO SHOO BABY (Candice Gray with The Los Paul Trio)
- RI-15002 - HOVSY TOSY (The Lorraine Trio and Tom Todd)
- RI-16005 - DON'T CRY BABY (Candice Gray with The Los Paul Trio)
- RI-13224 - STUDY IN BROWN (Bob Kerlan and his Harmonic Band)
- RI-16006 - ONE MAN BAND (Steve "Blue" Maudsl)
- RI-20004 - CONCERT CANTEN (Hubert and her Yalies)
- RI-20005 - WHERE IS THE CHICKEN? (The Angie Band Trio)
- RI-20006 - THE MUSIC SHOP (Hubert)
- RI-21306 - CLEMENTI JIVE (Angie Band Trio)
- RI-21307 - DON'T SQUEEZA DA BANANA (The Mary Kaulbach Trio)
- RI-21308 - STUFF LIKE THAT (The Mary Kaulbach Trio)
- RI-21309 - BACK HOME IN INDIANA (The Meltons)
- RI-21306 - THERE MUST BE A WAY (The Mary Kaulbach Trio)
- RI-22202 - MY BABY KNOWS BEST (The Mary Kaulbach Trio)
- RI-24001 - I DON'T KNOW ENOUGH ABOUT YOU (Candace and her Boys)
- RI-27005 - SWINGIN' WITH WILLIAM (Milton DeLuzo with Marty Malnow and his Orchestra)

DANCES

- RI-305 - CONGA LA MAIZE (Dorothy Zander)
- RI-1503 - A FELLER WHO PLAYS IN A BAND (Roxan Miller with Will Dehmer)
- RI-2204 - CORNBLK (Paul Nely and Maria Griffin)
- RI-4003 - THAT'S FOR ME (Dorothy Zander)
- RI-6008 - TICA TA-TICA TA (Ginger Harmon with the Mercer Brothers)
- RI-7102 - BLOW GABRIEL BLOW (Vivian Barry with Nita and Lenora)
- RI-7308 - LAMPLIGHTER'S SERENADE
- RI-11302 - BLENDER, TENDER AND TALL (Iris Thompson)
- RI-13302 - JUMPING BEAN (Dorothy Zander)
- RI-17106 - SOMBRERITO MIA (Lorraine Lee)
- RI-18504 - LADY WONDERFUL (Kenneth Buffett)
- RI-22201 - SPARKLE STRUT (The Barkley Sisters)

VAUDEVILLE AND VARIETY

- RI-2105 - I UNDERSTAND (Irene Baldwin)
- RI-2308 - A TWIST ON THE TWIST (Gene McDonald, Walter Adams)
- RI-6102 - FRANKIE AND BENJAMIN (Gene McDonald with Alice and Rosal)
- RI-7104 - THE FERRIS WHEEL (Bob Harper and Lorraine Elliot)
- RI-7308 - SWAN DON'T ALLOW IT (Irene Baldwin)
- RI-8002 - THE TURTLE LOVE (Gene McDonald)
- RI-8003 - THE GIBBY (Gene McDonald)
- RI-8005 - SWEET KNOWN TIME (Irene Baldwin)
- RI-12204 - SEE THE BIRDIES (Gene Austin and the performing low birds)
- RI-18008 - A HANDFUL OF RUBBER (Gene McDonald)
- RI-20307 - SIDE SHOW
- RI-20308 - WHIPS AND TRICKS (Irene and Lee and their bull-boys)
- RI-20309 - STUCK WITH IT (The Gibson's in a bull-boy-acting act)
- RI-22003 - TWENTY AND THIRTS (Janis Novell)
- RI-24203 - THE HEAVENS (Jeanne Faltichoff, Stan Aronin and Tom Zuban, featured divas)
- RI-25105 - AGUABATHS (Jack and Jim (featurettes))



ALL FILMS LISTED ON THIS PAGE ARE GOOD USED REVERSE-IMAGE 16mm. SOUND PRINTS

Always Order R-I Musicals by Number and Title

R-100' SOUND MUSICALS WITH COLORED PERFORMERS

SEPIA VOCALS

- RI-3203 — RIDE, RED, RIDE (The Chantellers)
 RI-4308 — JIM (Judy Carroll)
 RI-4964 — BLI-BLIP (Marie Bryant and Paul White)
 RI-6061 — WHAT TO DO (Herannah Churchill)
 RI-8203 — PECKIN' (The Chantellers)
 RI-10406 — WILLIE, WILLIE (Sam Manning and Della Rossie)
 RI-11704 — SWANEE SMILES (The Cabin Kids)
 RI-11720 — MEETIN' TIME (The Radio Aes)
 RI-11802 — BLOCK PARTY REVUE (Billie Lynn and Ann Albritton)
 RI-11805 — BACKSTAGE BLUES (Lynn Albritton)
 RI-12008 — KEEP WAITIN' (George Washington Brown)
 RI-12106 — EMILY BROWN (Bob Farnham)
 RI-12508 — GOOD-NIGHT ALL (Johnny Taylor, Flandel and Vocalists)
 RI-12507 — GOD'S HEAVEN (George Washington Brown)
 RI-12905 — HIT THAT JIVE JACK (The Musical Madcaps)
 RI-13008 — KEEP SMILING (The Gingersnaps)
 RI-13200 — WHAM (The Four Gingersnaps)
 RI-13506 — TOOT THAT TRUMPET (Flandel Everett with Cook and Brown)
 RI-14403 — AIN'T MY SUGAR SWEET (The Chantellers)
 RI-14408 — BABY, DON'T YOU CRY (Warren Evans)
 RI-14600 — IF YOU TREAT ME TO A HUG (The Chantellers)
 RI-14605 — BIT IT (Flandel and Jackson)
 RI-15008 — LAZY RIVER (The Madcap Show)
 RI-16000 — EVERY DAY IS SATURDAY IN HARLEM (Billie Rivers)
 RI-16002 — HEY LADY MAMA (Ray Milton Band with June Richmond)
 RI-16008 — RINKA TINKA MAN (Billie Harwood)
 RI-17208 — (BRAIN) (Lee Richmond)
 RI-17506 — I CAN'T DANCE (Billie Harwood and Cliff Allen)
 RI-18100 — I LIKE IT CAUSE I LOVE IT (The Mae Collins)
 RI-18400 — MARY HAD A LITTLE LAMB (The Three Poppers)
 RI-18608 — HIS ROCKIN' HORSE RAN AWAY (Ida James)
 RI-18800 — CHA-CHI-MAN (The Little Four Quartette)
 RI-18808 — AIN'T SHE PRETTY (The Three Poppers)
 RI-19000 — STEAK AND POTATOES (Mabel Scott)
 RI-19400 — LOVE GROWS ON A WHITE OAK TREE (Little Four Quartette)
 RI-19600 — CAN'T SEE FOR LOOKIN' (Ida James)
 RI-27008 — CATS CAN'T DANCE (Mabel Scott)
 RI-27308 — OH-N-E-NY, NY (The Cousins and the Cousins)
 RI-27300 — IT'S ME, OH! LORD (John Madrack Horan)
 RI-28100 — "FIVE SALTED PEANUTS" (The Cousins and the Cousins)
 RI-28206 — WE'RE STEPPING OUT TONIGHT (Lee Richmond)
 RI-28208 — YA FINE AND HEALTHY THING (Dallas Bartley)
 RI-32700 — I HAD A DREAM (Johnny and George)
 RI-36000 — JOSEPH AND HIS BROTHERS (June Richmond)
 RI-38100 — MR. JACKSON FROM JACKSONVILLE (June Richmond)
 RI-39400 — TAKE EVERYTHING (The Three Poppers)
 RI-39500 — KNOCK ME OUT (Aqua and Kestellia)
 RI-39900 — BIG FAT BUTTERFLY (Gene Rodgers)
 RI-402 — BABY DON'T YOU LOVE ME ANYMORE (June Richmond)
 RI-482 — YOU CAN'T FOOL ABOUT LOVE (Josephine Edwards)
 RI-784 — I MISS YOU SO (Warren Evans)
 RI-784 — HARLEM HOTCHA (Tops and Wilder, Ferrabee Pursell and Ninky O'Daniel)
 RI-108 — CHILLY 'N COLD (The Little Four Quartette)

- RI-131M1 — NOAH (The Jubilators)
 RI-16M3 — THE CHAIR SONG (Paul Moore Four)
 RI-21M4 — SATCHEL MOUTH BABU (Mildred Boyd with Duane Brooks and Paul Moore)
 RI-22M2 — BABY, ARE YOU KIDDIN' (Mildred Boyd and The Four Tops)
 RI-23M1 — GET IT OFF YOUR MIND (Vivita Smythe)
 RI-24M2 — MY BOTTLE IS DRY (June Richmond)
 RI-24M3 — I NEED A PLAYMATE (Vivita Smythe)
 RI-24M5 — AM I LUCKY? (Duane Brooks)
 RI-25M3 — SHO HAD A WONDERFUL TIME (Vivita Smythe and Cliff Deblat)
 RI-25M4 — WHO DUNIT TO WHO (June Richmond)
 RI-27M2 — RHYTHM IN A RIFF (Billy Krieger and his Orchestra)

SEPIA DANCES

- RI-3104 — COW-COW BOOGIE (Dorothy Dandridge)
 RI-10602 — QUARRY ROAD (Sam Manning with Della Rossie)
 RI-385 — QUICK WATSON, THE RHYTHM (Mira Johnson)
 RI-782 — PRANCING IN THE PARK (Tops and Wilder)
 RI-20M1 — HARLEM HOTCHA (Mickey O'Daniel)

SEPIA DANCE BANDS

- RI-10605 — JUMP IN (Lee Jordan and his Orchestra with The Four Tops)
 RI-11305 — LET'S GO (Lee Jordan and his Orchestra with The Four Tops)
 RI-17108 — RIDE ON, RIDE ON (June Richmond with Ray Milton and Orchestra)
 RI-19308 — BOOGIE WOOGIE (Mable Lewis and Duffie Dickerson)
 RI-27500 — ROMANCE WITHOUT FINANCE (Troy Orleans and his Orchestra)
 RI-27708 — T. G. BOOGIE WOOGIE (Troy Orleans and his Orchestra)
 RI-28208 — CRYIN AND SINGIN' THE BLUES (Dallas Bartley)
 RI-28306 — EIGHTY-EIGHT REASONS WHY (Boogie-woogie)
 RI-29208 — DON'T BE LATE (Lee Scott's Orchestra)
 RI-2M1 — BECAUSE I LOVE YOU (Mable Smith with Lucky Miller and Band)
 RI-11M1 — CONTRAST IN RHYTHM (Cecil Scott and his Orchestra)
 RI-11M3 — MR. X BLUES (Cecil Scott and his Orchestra)
 RI-12M1 — 'TIS YOU BABE (Elsiea Tubert and his Orchestra)
 RI-12M2 — SANDIN' JOE (Dallas Bartley and his Orchestra)
 RI-12M3 — WE PITCHED A BOOGIE WOOGIE (Dallas Bartley Orchestra)
 RI-12M4 — (Vivita and John Wagner)
 RI-18M2 — THE POLLARD JUMP (Mickey O'Daniel)
 RI-20M5 — COUNT ME OUT (Cliff Allen and A. C. Higginbotham)
 RI-23M2 — HELLO BILL (Lucky Miller and his Orchestra)
 RI-23M4 — THAT MAN OF MINE (Anna Mae Winburn)
 RI-24M4 — I WANT A MAN (Lucky Miller and his Orchestra with Annie Allen)
 RI-25M1 — SHE'S CRAZY WITH THE HEAT (Anna Mae Winburn with International Sweethearts of Rhythm)
 RI-28M2 — EVERYBODY'S JUMPIN' NOW (Mable Kieise and his Orchestra)
 RI-28M3 — BROADWAY (Hetti Woods and his Orchestra)
 RI-28M1 — MISTLETOE (Hetti Woods and his Orchestra)



12106 — EMILY BROWN



20M3 — COUNT ME OUT



11M1 — CONTRAST IN RHYTHM

School
 of Cinematic Arts
 Hugh M. Hefner Moving Image Archive

Lobster
 BLACKHAWK FILMS,
 DAVENPORT,



MELTON MOVIE VIEWER

THE HAND-HELD 8mm. Viewer

Shows:

in normal action — slow motion — still
your personal 50' 8mm. Kodachrome and black
and white films!
all Castle Films 50' 8mm. movies!

**Simple Operation — A Child Can Load and See
Movies in Less Than a Minute!**

The Melton Movie Viewer shows a full 50' 8mm. film — rewinds
without reloading. No sprockets to thread. Compact. Highly durable!
Ideal for home movie fans — perfect for the kids — just the gift
for the man overseas — welcomed by the shut-in.

The MELTON MOVIE VIEWER (EN-38), postpaid
(films are extra), is only **\$4.95**

SCREENS

Because of new postal regulations, all of these screens exceed maximum
dimensions permitted by the Post Office Department. Therefore, screens will
be shipped Railway Express collect for transportation. If your express office
differs from your residence address, please show both addresses.

DA-LITE BEADED SCREENS

We still have some screens in the sizes below from the bankrupt stock we've
advertised the last few issues. They are brand new Da-Lite Beaded Screens
of recent manufacture, although not all of the items may have exactly the
same finish or hardware in which Da-Lite is currently supplying the items. Here
is your chance to buy a top-line, nationally advertised brand, at savings of up
to one-half off current list prices. Whenever you can, give us an alternate
selection of size and model. We'll always send your first choice as long as we
have it.

- 30"x40" Da-Lite Model B Map-Type Wall Screen **\$7.95**
Regular price, \$12.00. Blackhawk's Money Saving Price.
- 37"x50" Da-Lite Challenger Tripod Screen **\$16.95**
Regular price, \$29.70. Blackhawk's Bargain Price.
- 37"x50" Da-Lite Versatol Tripod Screen **\$14.95**
Regular price, \$24.20. Blackhawk's Economy Price.
- 40"x40" Da-Lite Model B Map-Type Wall Screen **\$8.95**
Regular price, \$13.50. Blackhawk's Money-Saving Price.
- 50"x50" Da-Lite Model B Map-Type Wall Screen **\$11.95**
Regular price, \$19.50. Blackhawk's Economy Price.

AURORA BEADED TRIPOD SCREENS

Aurora's Super Deluxe Tripod Screen is easy to set up and adjust, made from the
 finest Glass Beaded matrix to give the brightest picture, equipped with features
 of sturdy construction and stylish design. You'll go a long way to best this value.

- EN-51 50"x50" Super Deluxe Tripod Screen **\$22.95**
Regularly \$28.50. Blackhawk's Price.
- EN-52 45"x50" Super Deluxe Tripod Screen **\$27.95**
Regularly \$33.95. Blackhawk's Price.
- EN-53 60"x60" Super Deluxe Tripod Screen **\$32.95**
Regularly \$39.50. Blackhawk's Price.
- EN-54 52"x70" Super Deluxe Tripod Screen **\$33.95**
Regularly \$41.25. Blackhawk's Price.

9' x 12' CLOTH SCREEN

There is an economical screen that will give excellent service, both outdoors and
 indoors. Made of heavy white cloth. When stretched, it is reinforced and fitted
 with grammys around all four sides, with metal "D's" at the corners. It is thus
 suitable for stretching in a frame or hanging on a wall. Folds compactly, too.
 Washable, and use of a good bleach will keep it light. Size is approximately
 9' x 12'. Where but at Blackhawk would you find a screen like this (EN-25) for only **\$17.95**

Always more movies for your money at
"Sixteen's Super Market"

USED MICROPHONES

MODEL 22X TURNER MICROPHONE. Crystal type microphone suitable
for operation with most 16mm. sound projectors. P. A. system or radio
amplifiers. A top quality crystal mike with 50' shielded cable permitting use
at a great distance from amplifier. Looks and operates like new. **\$12.95**
Our item EUN-15, priced at only **\$9.95**

MODEL BX TURNER MICROPHONE. A crystal type microphone at a
worth-while saving over the cost of a new one of the same model. Works with
most 16mm. sound projectors, radios and P. A. amplifiers. Looks
and operates like new. Our item EUN-16, priced at only **\$7.95**

XYSTATIC MODEL JT-30 MICROPHONE WITH DESK STAND. Here's an
especially neat crystal microphone of a type that will operate through most
sound projector amplifiers. P. A. system or radio amplifiers. **\$9.95**
Looks and operates like new. Our item EUN-12, priced at only **\$9.95**

USED LENSES

1" SIMPSON F1.4 PROJECTION LENS with spiral lens barrel. Gives a
picture just twice as wide as the standard 2" lens at the same distance from
the screen. This is the type used for Ampex, Victor, RCA and most other
modern projectors. Like new condition and at less than half
the cost of a new lens. Item EUN-1, only **\$9.95**

1 1/2" SIMPSON F1.6 PROJECTION LENS with spiral lens barrel. Gives a
picture 50% wider than the standard 2" lens at the same distance from
the screen. This type lens barrel will fit almost all of the modern 16mm. sound
projectors — almost most of the silent as well. Condition like new, and priced
less than half of what a new lens would cost you. **\$9.95**
Item EUN-3, only **\$9.95**

1 1/2" SIMPSON F1.65 PROJECTION LENS with spiral lens barrel. Gives a
picture 50% wider than the standard 2" lens at the same distance from
the screen. This lens will fit almost all modern 16mm. sound and silent projectors.
It's a bargain at less than one-half its cost now. **\$9.95**
Item EUN-4, only **\$9.95**

2" SIMPSON F1.6 PROJECTION LENS with spiral lens barrel. This is the
standard focal length lens suitable for most 16mm. projectors, that will give
a picture about 1-foot wide for each five feet the projector is
spaced from the screen. Like new. Item EUN-2, only **\$9.95**

2" SIMPSON F1.6 PROJECTION LENS with spiral lens barrel. This lens
will fit most 16mm. projectors. It is standard lens for lenses with which most
projectors are delivered and gives a picture about 1-foot wide for each five
feet the projector is spaced from the screen. Like new. **\$9.95**
Item EUN-4, only **\$9.95**

2 1/2" SIMPSON F1.85 PROJECTION LENS with spiral lens barrel. This is a
very popular focal length lens, giving a picture about 20% smaller than the
standard 2" lens at the same distance from the screen. Like new. **\$9.95**
Item EUN-10, only **\$9.95**

3" BELL & HOWELL INCRE-LITE F2 PROJECTION LENS with spiral
lens barrel. This is Bell & Howell's super lens which will also fit most other
projectors using a spiral lens barrel. Gives a picture about 1/3 smaller than
the standard 2" lens. And, while it looks like new, it's priced at
less than half its cost now. Item EUN-6, only **\$12.95**

3 1/2" SIMPSON COATED 3 1/2" F1.5 PROJECTION LENS with spiral lens
barrel. A top quality lens with coated lens elements which will give a picture
about 37% smaller than the standard 2" at the same distance from
the screen. Like new, and priced at less than half its selling price now. **\$9.95**
Item EUN-7, only **\$9.95**

USED AMPLIFIERS

STROMBERG-CARLSON HIGH-POWER, HIGH-FIDELITY P. A. AMPLIFIER. Gives approximately 25 watts output. Has volume control, phono-pickup,
and separate volume control for microphone. Tone control. Outlets for two
speakers (speakers, record player and microphone are not included) which may
be set for eight different ohm ratings. Comes in pretreated housing with
convenient carrying handle at top for easy portability. Looks and operates like
new, but priced at about half what a new amplifier would cost. **\$49.95**
Our item EUN-14, only **\$49.95**

USED RECORD PLAYERS

RCA VICTOR 45 R. P. M. RECORD CHANGER. Plays a stack of the little
7" 45 r. p. m. plastic discs through the amplifier of your radio, P. A. system or
sound projector. Anal. priced but little more than the cost of
a record album. Our item EUN-13, only **\$7.95**

USED SCREENS

9'x12' CLOTH SCREEN. Here's an excellent, slightly used 9'x12' cloth
screen of our manufacture. It's the item that usually sells for \$17.95 now. But
this good used one — some lucky person is going to buy for but little
more than half price. Item EUN-25, only **\$9.95**

9'x12' WHITE RUBBER SURFACED SCREEN. Here's a de luxe outdoor
screen of rubberized material giving an especially white mat surface. The
hanger is black, permitting sharp picture edge. Mounts in much the same way
as the standard white cloth screen. Item EUN-11, only **\$24.95**

USED SCHOOL EQUIPMENT

BELL & HOWELL'S INCRE-LITE F2 PROJECTION LENS with spiral lens
barrel. This is Bell & Howell's super lens which will also fit most other
projectors using a spiral lens barrel. Gives a picture about 1/3 smaller than
the standard 2" lens. And, while it looks like new, it's priced at
less than half its cost now. Item EUN-6, only **\$12.95**

VICTOR DEAL CHANGER SWITCH. Here's a neat gadget that will
operate with Victor projectors, and can be adapted to units of other makes
as well. What it does is permit a professional looking change-over for a
conditioned 16mm. program run on two machines. It starts the motor on the
second machine when the lamp on the second machine is set to burn off the
lamp of the first machine, and then turns off the motor on the first machine
as soon as the lamp on the first machine is set to burn off. It does this with two
switches and one of the switches is set to burn off. It's a neat idea in quite
a trick. Our item EUN-18, priced at less than half its new cost. **\$9.95**
only

This guarantee provides that if for any reason you do not wish to retain any films or merchandise you order from Blackhawk, you may ship them back to us, transportation paid, within five days after you receive them, together with a copy of your invoice, and we'll give you full credit. Of course, returned merchandise must be in substantially the same condition when returned as when you received it. If films are returned or sent for trade-in, it will usually be ten days to two weeks before exchange merchandise or refund check will reach you.

Read This Before You Order!

Blackhawk can continually offer you these exceptional buys only by eliminating all possibility of credit losses, and by operating our organization at the utmost efficiency. Therefore, irrespective of your credit rating, our terms are CASH WITH ORDER, or (inside continental United States) C.O.D. However, even inside continental United States, a 10% deposit must accompany all C.O.D. orders of \$50.00 or more. Outside continental United States—and this includes Alaska, Canada, Hawaii, Mexico, Porto Rico and the Panama Canal Zone—we can handle orders only when remittances in full are included. In all cases, we urge you to remit by postal or express money orders, or by bank drafts. Foreign orders must be in U. S. funds. Do not send currency or coins—even by registered mail—for you do so at your own risk.

We have found that we cannot economically handle orders totaling less than \$2.50 (or less than \$10.00 from outside the Continental United States), so henceforth we cannot accept any order that does not total at least these minimums. You will see footnotes reminding you of this throughout the catalog. Just remember, if you live in the United States, your order must be for a minimum of \$2.50. If you live outside the Continental United States, your order must be for a minimum of \$10.00 and must be paid in U. S. funds. (This includes orders from Canada and Mexico.)

Purchasers in Iowa must pay the 2% Iowa State Retail Sales Tax except in the case of retailers who are purchasing materials for resale, in which case this fact must be clearly stated on the order.

Under the new postal regulations, parcels may not exceed 20 lbs. in weight nor 72 inches in girth. This means generally that all moderate to large shipments of films must be shipped to you by Railway Express, and that shipments of projectors, screens (except our folding cloth screens) and moderate to large quantities of reels and cans must go by express instead of parcel post. Whenever an item has to be shipped by express, we will send it express collect for the transportation, which you will pay on delivery.

However, an small moderate size shipments, which may be sent by parcel post, if you wish to remit in full with your order, you may include the appropriate amount to cover packing, postage and insurance, based on your address, as covered by the following three territorial groupings:

	GROUP A	GROUP B	GROUP C
Shipment of one 100' print	.10	.10	.10
Shipment of two 100' prints	.20	.23	.30
Shipment of one 400' reel of film	.25	.40	.45
Shipment of two 400' reels of film	.30	.50	.55
Shipment of three 400' reels of film	.35	.60	.70
Shipment of four 400' reels of film	.40	.75	.85
Shipment of five 400' reels of film	.45	.85	1.00

To:

Postmaster:

IF ADDRESSEE HAS MOVED, AND NEW ADDRESS IS KNOWN, NOTIFY SENDER ON FORM 3547, POSTAGE FOR WHICH IS GUARANTEED. IN CASE OF REMOVAL TO ANOTHER POST OFFICE, DO NOT NOTIFY ADDRESSEE BUT HOLD THE MATTER AND STATE ON FORM 3547 AMOUNT OF FORWARDING POSTAGE REQUIRED, WHICH SENDER WILL PROMPTLY FURNISH.

8K 52 22

Shipment of six 400' reels of film	.50	.95	1.14
Shipment of seven 400' reels of film	.55	1.10	1.25
Shipment of eight 400' reels of film	.60	1.20	1.40
Shipment of nine 400' reels of film	.65	1.30	1.55
Shipment of ten 400' reels of film	.70	1.40	1.70
Shipment of eleven 400' reels of film	.75	1.55	1.85
Shipment of twelve 400' reels of film	.80	1.65	1.95

Most shipments of more than twelve reels will exceed twenty pounds and must therefore be shipped by express.

GROUP A — applies to Arkansas, Illinois, Indiana, Iowa, Kansas, Kentucky, Michigan, Minnesota, Missouri, Nebraska, Ohio, Oklahoma, South Dakota, Tennessee, West Virginia and Wisconsin.

GROUP B — applies to Alabama, Arizona, California, Colorado, Connecticut, Delaware, District of Columbia, Florida, Georgia, Idaho, Louisiana, Maine, Maryland, Massachusetts, Mississippi, Montana, Nevada, New Hampshire, New Jersey, New Mexico, New York, North

PAID
Davenport, Iowa
Permit No. 344

Carolina, North Dakota, Oregon, Pennsylvania, Rhode Island, South Carolina, Texas, Utah, Vermont, Virginia, Washington and Wyoming.

GROUP C — applies to Alaska, Canal Zone, Hawaii and Porto Rico, together with all other U. S. territories and possessions, Canada, Mexico, Central American and European Countries.

Three 100' prints count as one 400' reel in figuring postage and insurance. Each feature picture counts as eight 400' reels in figuring postage and insurance. Reg. emul. reels, glass, bases, etc., allow 20% of purchase price for postage and insurance.

On many classes of films listed here, additional savings can be made by ordering six, twelve or more prints at a time. These discounts, however, apply only to quantities purchased within that class, and not to assortments of several classes of films. Discounts do not apply to any new or used films unless specifically offered in the listing.

There are no dealer discounts of any kind offered by Blackhawk — the prices quoted in this Bulletin, and the quantity discounts available on certain types of films, apply to all classes of purchasers.

Our office is open from 8:30 to 4:30 Monday through Friday. We are closed all day Saturday and Sunday. During office hours, we can be reached by phone on 3-9737 or by a personal call at the Putnam Building, Second and Main Streets.

U.S.C. School
of Cine
Hush Mr. He

Lobster