



THE GOLDEN ARROW

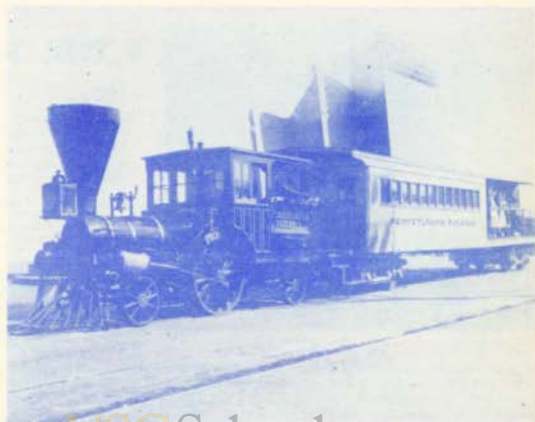
16 SDN 45B18 16mm. sound version, about 300 feet \$11.95
 8 SLN 45B18 8mm. silent version, about 150 feet \$2.98

Now, for the first time, Blackhawk's Railroad Series brings you a film on one of Europe's great trains—THE GOLDEN ARROW. The Golden Arrow service is the fastest surface route between London and Paris — less than seven hours. You leave London in the morning on the British Golden Arrow for the run to Dover. There you transfer to the channel ferry, The Invicta, for the crossing to Calais. At the dock in Calais the French Golden Arrow, the Fleche d'Or, is awaiting the arrival of the ferry, and twenty minutes after the ferry docks it departs for the run to Paris, non-stop almost 200 miles away. Here's a film that gives you the real flavor of Continental trains. You see so much that is different from what we have in this country — and so much that is similar to what we are accustomed. The Golden Arrow is going to have a lot of appeal for railroad fans, travelers, schools and libraries—as a matter of fact, we think the person who isn't going to be absorbed by the story of The Golden Arrow is going to be a rare exception. You, too, can take the trip from London to Paris. Order your print today!

WHEELS A' ROLLING

16 SDN 107B32 16mm. sound version, 3-reels totaling about 1100 feet \$39.95

(WHEELS A' ROLLING is not currently available in 8mm. However, if sufficient demand exists we may be able to offer it in 8mm. priced at about \$13.00. Do not order now, but if you'd like to buy a copy let us know. We should be able to announce within four to six weeks as to whether or not WHEELS A' ROLLING can be made available in 8mm.)



Here's the film that shows the cavalcade of railroad motive power from its earliest beginnings up to today. You'll see the Tom Thumb, the Best Friend of Charleston, the John Bull, the D. Witt Clinton, the Cumberland Valley (now Pennsylvania) Pioneer, the Lafayette of the B. & O., the John Hancock, the Chesapeake Pioneer, the Reuben Wells, Lincoln's Funeral Coach, the Minnetonka, the William Crooks, The Santa Fe's Little Buttercup, one of the Burlington's Immigrant Trains, Old 999 of the Empire State Express, the Burlington Pioneer Zephyr of 1934 — the first diesel-electric, stainless steel streamliner. All of the romance of American railroading is captured in this WHEELS A' ROLLING pageant, photographed just as it was presented at the 1948 and 1949 Chicago Railroad Fair. The commentary and the score of the pageant are the commentary and score of the film.


BLACKHAWK FILMS INC. catalog 6 **DAVENPORT, IOWA**
 EFFECTIVE UNTIL SEPTEMBER 1, 1952

Blackhawk Films Inc.

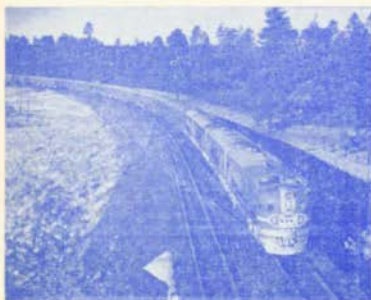
SHE 3244, P. 1, 2, 3



BATHING GIRLS---THEN AND NOW

First film in another new Blackhawk series! A fascinating subject showing the evolution of today's swim suit from "bathing costume" of the 1890's. You'll see the rather quaint cotton costumes of the late 90's, the diving suits of early 1900's, those terrific striped numbers with matching stockings that were all the rage about the time of World War I, the two-piece suits of the mid-20's, and then developments in the modern trend with sun backs and fire-retardant fabrics. You'll get more than one chuckle out of the old-timers. And, as for the new ones — well, a narrator says in the sound version: "No matter how handsome a man may be, he can never compete with bathing girls on the beaches."

16 SDN 45B17 16mm. sound version, about 300 feet \$11.95
 8 SLN 45B17 8mm. silent version, about 150 feet \$2.98



THE SUPER CHIEF

THE SUPER CHIEF covers the 39½ hour streamlined journey from Chicago to Los Angeles of the Santa Fe's newly equipped streamliner. It shows the accommodations of the modern sleeping cars, the Pleasure Dome car with its dining room, the dining car proper, the observation. And it shows the scenic Mexico-Arizona country through which the Santa Fe travels. The train is shown in detail, both inside and out, and there are a number of swell shots at various points across Kansas and Colorado.

16 SDN 45B9 16mm. sound version, \$11.95
 about 300 feet
 8 SLN 45B9 8mm. silent version, \$2.98
 about 150 feet

WESTERN PACIFIC FAST FREIGHT

If you have any idea that a freight train isn't in the running with a streamliner as glamorous as THE SUPER CHIEF — take a look at WESTERN PACIFIC FAST FREIGHT. It's the run of No. 62, The Fruitblock, from Oakland, Calif., to Salt Lake City — all the way behind a 6,000 horsepower Electro-Motive diesel locomotive. Much of the footage was shot in the Feather River Canyon where the W.P. tackles the Sierra Nevadas — and much of the footage shot in the canyon was photographed from a helicopter. Mighty spectacular stuff it is, too.

One extremely interesting sequence shows the working of Centralized Traffic Control, the modern train dispatching system that permits a man at one control panel to direct trains over a 490 to 500 mile length of main line. It shows how the Fruitblock, and the Western Pacific's "Big Boy" locomotive, the CALIFORNIA ZEPHYR meet and pass on the single track main line, and a siding, without either train stopping. It's a whiz of a film.

16 SDN 45B14 16mm. sound version, \$11.95
 about 300 feet
 8 SLN 45B14 8mm. silent version, \$2.98
 about 150 feet



Coming Next Month!


Lobster
 FIRST FILM IN 'BLACKHAWK'S COLLECTORS' SERIES

CLOSE-OUT SALE OF BRAND NEW 8MM. PRINTS

--- MANY AT LESS THAN WHOLESALE!

These films include some titles originally released by Castle and Fictorial which they have now discontinued, and other titles released by Castle and Hollywood Film that we have decided to drop from our regular listings. In either case, they are all brand new prints in their original cartons, and the difference between their regular list price and our close-out price is really something! Notice that we have a few titles available in both headline and complete versions, so be sure to specify which you want when you order, and order by both number and title. Complete versions run about 150' with the exception of cartoons, which are somewhat shorter; headline versions run about 50'. Headline editions are condensations of the complete version of the film.

8 SLN 3388	FOOTBALL PARADE OF 1949. (Complete version)	Regularly, \$5.95	\$1.98
8 SLN 3381B	THREE LITTLE BRUINS GO CAMPING. (Headline version), Regularly \$1.95		\$1.49
8 SLN 5316A	THE HEALTHY FARM (Complete version)	Farmer Al Falta cartoon	\$2.49
8 SLN 53403	TRAILER LIFE (Complete version)	Farmer Al Falta cartoon	\$2.49
8 SLN 1389	RIOT ON ICE. (Headline version)	Abbott and Costello Comedy, Regularly, \$1.95	\$1.49
8 SLN 53143	GANDY'S ADVENTURE (Complete version)	Gandy Goose cartoon	\$2.50
8 SLN 53136	FRANSUP (Complete version)	Gandy Goose cartoon	\$2.50
8 SLN 5331	FOOTBALL PARADE OF 1948 (Headline version)		.79
8 SLN 6312	RECKLESS DRIVER. (Headline version)	Woody Woodpecker Comedy, Regularly, \$1.95	\$1.49
8 SLN 5334	CROW CRAZY (Complete version)	Andy Panda cartoon, Regularly, \$5.95	\$2.89
8 SLN 33310	CHINOOK'S CHILDREN (Headline version)		.79
8 SLN 53265	MOUSE OF TOMORROW (Complete version)	Mighty Mouse cartoon	\$2.50
8 SLN 728	MICKY PLAYS PAPA (Complete version)	Mickey Mouse cartoon, Regularly \$2.75	\$1.89
8 SLN 6325	ANDY'S GARDEN (Headline version)	Andy Panda Cartoon, Regularly, \$1.95	\$1.49
8 SLN 6327	APPLE ANDY. (Headline version)	Andy Panda Cartoon, Regularly, \$1.95	\$1.49
8 SLN 3685	CHIMP ON THE FARM. (Headline version)	Regularly, \$1.95	\$1.49
8 SLN 532	ACE IN THE HOLE (Complete version)	Woody Woodpecker cartoon, Regularly, \$5.95	\$3.89
8 SLN 30834	RIT AND BRIDLE (Complete version)		\$1.98
8 SLN 5310	ANDY'S GARDEN (Complete version)	Andy Panda cartoon, Regularly, \$5.95	\$3.89
8 SLN 3386	FOOTBALL PARADE OF 1949 (Headline version)		.79
8 SLN 1386	MIDGET MANIACS. (Headline version)	Abbott and Costello Comedy, Regularly, \$1.95	\$1.49
8 SLN 53470	APPLE ANDY (Complete version)	Andy Panda cartoon, Regularly, \$5.95	\$3.89
8 SLN 5381	PRAIRIE VENGEANCE. (Headline version)	Hopalong Cassidy Western, Regularly, \$1.95	\$1.49
8 SLN 5399	DIZZY KITTY (Complete version)	Andy Panda cartoon, Regularly, \$5.95	\$3.89
8 SLN 53149	GOODBYE MR. MOTH (Complete version)	Andy Panda cartoon, Regularly, \$5.95	\$3.89
8 SLN 53243	MEET TUESDAY (Complete version)	Andy Panda cartoon, Regularly, \$5.95	\$3.89
8 SLN 53260	MOUSE TRAPERS (Complete version)	Andy Panda cartoon, Regularly, \$5.95	\$3.89
8 SLN 53475	MOUSE COMES HOME (Complete version)	Andy Panda cartoon, Regularly, \$5.95	\$3.89
8 SLN 5351	THE CRACKED NUT (Complete version)	Woody Woodpecker cartoon, Regularly, \$5.95	\$3.89
8 SLN 53476	WACKY WEED (Complete version)	Andy Panda cartoon, Regularly, \$5.95	\$3.89
8 SLN 1384	HIGH FLYERS. (Headline version)	Abbott and Costello Comedy, Regularly, \$1.95	\$1.49
8 SLN 5320	THE BEACHNUT (Complete version)	Woody Woodpecker cartoon, Regularly, \$5.95	\$3.89
8 SLN 53175	HOLLYWOOD MATADOR (Complete version)	Woody Woodpecker cartoon, Regularly, \$5.95	\$3.89
8 SLN 53232	THE LOAN STRANGER (Complete version)	Woody Woodpecker cartoon, Regularly, \$5.95	\$3.89
8 SLN 53293	THE PAINTER AND THE POINT (Complete version)	Andy Panda cartoon, Regularly, \$5.95	\$3.89
8 SLN 5339	THE SCREWBALL (Complete version)	Woody Woodpecker cartoon, Regularly, \$5.95	\$3.89
8 SLN 35310	CHIMP, THE SAILOR (Complete version)	Regularly, \$5.95	\$3.89
8 SLN 53481	COCCO BIRD (Complete version)	Woody Woodpecker cartoon, Regularly, \$5.95	\$3.89
8 SLN 53468	EATING BUDDIES (Complete version)	Woody Woodpecker cartoon, Regularly, \$5.95	\$3.89



MELTON MOVIE VIEWER

**THE HAND-HELD
8mm. Viewer**

BLACKHAWK FILMS INC.
DAVENPORT, IOWA

Shows:
 in normal action — slow motion — still!
 your personal 50' 8mm. Kodachrome and black
 and white films!
 all Castle Films 50' 8mm. movies!

**Simple Operation — A Child Can Load and See
 Movies in Less Than a Minute!**

The Melton Movie Viewer shows a full 50' 8mm. film — rewinds without reloading. No sprockets to thread. Compact. Highly durable!
 Ideal for home movie fans — perfect for the kids — just the gift for the man overseas — welcomed by the du-rin.

The MELTON MOVIE VIEWER (E-238), postpaid **\$4.95**
 (films are extra), is only

NEW 8mm. PRINTS AT A SAVIN

ZANE GREY CLASSICS

Released by Hollywood Film
Length 1- reel, 8mm., approx. 150-feet.

Blockhawk's Price \$3.98

Here are highlights in action-filled and dramatic form from almost a dozen famous Zane Grey stories which were either produced or originally distributed theatrically by Paramount. These are not only entertaining today for what they are today — but pleasant memories of the 1930's.

- 8 SLN 50B31 — ARIZONA BADMAN with Robert Cummings, Buster Crabbe
- 8 SLN 50B35 — BORN TO THE WEST with John Wayne, Johnny Mack Brown
- 8 SLN 50B27 — DRIFT FENCE with Buster Crabbe, Tom Keene
- 8 SLN 50B28 — FOOLBORN RIVER with Buster Crabbe, Jane Marnell
- 8 SLN 50B30 — HELL TOWN with John Wayne, Johnny Mack Brown
- 8 SLN 50B32 — HERITAGE OF THE DESERT with Russell Hayden, Donald Woods
- 8 SLN 50B37 — KNIGHTS OF THE RANGE with Russell Hayden, Jean Parker
- 8 SLN 50B33 — MAN OF THE FOREST with Randolph Scott, Noah Berry, Sr.
- 8 SLN 50B36 — THE THUNDERING HERD with Randolph Scott, Judith Allen
- 8 SLN 50B39 — THE LAST MAN with Randolph Scott, Buster Crabbe
- 8 SLN 50B34 — WAGON WHEELS with Randolph Scott, Gail Patrick

FAIRY TALES

Released by Sterling
Length 1-reel, 8mm., approx. 150-feet.

Regularly, \$5.95, Blockhawk's Price \$4.98

A series of fairy tales — some of the very best and most famous — effectively produced with live actors — not cartoons, puppets or marionettes.

- 8 SLN 40B24 — THE BEAR SKIN
- 8 SLN 40B16 — CINDERELLA
- 8 SLN 40B22 — RUPUNZEL
- 8 SLN 40B30 — RUMPLESTILTSKIN
- 8 SLN 40B19 — THE SLEEPING BEAUTY
- 8 SLN 40B27 — THE WICKED WISH

HAL ROACH'S FAMOUS KIDS COMEDIES

Released by Official
Length 1-reel, 8mm., approx. 150-feet.

Regularly, \$5.95, Blockhawk's Price \$4.98

These 1-reel films are the last two series of comedy music by Hal Roach at "Our Gang" comedies before his discontinued production and disposal of his rights to this registered trade mark to M-G-M. And, they're some of the best he ever made, with Spunky, Stymie, Alvin, and many other of the characters of the 1931, 1937 period.

- 8 SLN 10B56 — THE AWFUL TOOTH
- 8 SLN 10B35 — BEAR FACTS
- 8 SLN 10B49 — BORED OF EDUCATION
- 8 SLN 10B37 — CANNED FISHING
- 8 SLN 10B34 — FISHY TAILS
- 8 SLN 10B6 — GLOVE TAPS
- 8 SLN 10B8 — HEARTS ARE THUMPS
- 8 SLN 10B38 — HIDE AND SIBBER
- 8 SLN 10B16 — MAIL AND FEMALE
- 8 SLN 10B26 — NIGHT 'N' GALS
- 8 SLN 10B30 — PAY AS YOU EXIT
- 8 SLN 10B33 — TWO TOO YOUNG



WALT DISNEY CARTOONS

Released by Hollywood Film
Length 1/2-reel, 8mm., approx. 100-feet.

Regularly, \$2.75, Blockhawk's Price \$2.49

A selected group of Walt Disney cartoons, almost full original length, with many of Disney's most famous characters. The group is the real bargain lot in our current offering of 8mm. subjects.

- 8 SLN 7B0 — CANNIBAL CAPERS (Silly Symphony)
- 8 SLN 7B21 — CHRISTMAS IN TOYLAND (Silly Symphony)
- 8 SLN 7B12 — DOG CATCHER MICKEY (Mickey Mouse)
- 8 SLN 7B11 — DONALD AND PLUTO (Donald Duck)
- 8 SLN 7B27 — DONALD'S DAY OFF (Donald Duck)
- 8 SLN 7B10 — DONALD'S MEXICAN ROMANCE (Donald Duck)
- 8 SLN 7B25 — FAST AND FURIOUS (Donald Duck)
- 8 SLN 7B30 — THE FIREMAN (Donald Duck)
- 8 SLN 7B28 — THE FLYING TRAPEZE (Donald Duck)
- 8 SLN 7B13 — FORWARD PASS (Mickey Mouse)
- 8 SLN 7B19 — GOLD BUSH MICKEY (Mickey Mouse)
- 8 SLN 7B16 — GULLIVER MICKEY (Mickey Mouse)
- 8 SLN 7B11 — HIGH SPEED MICKEY (Mickey Mouse)
- 8 SLN 7B32 — MAGICIAN MICKEY (Mickey Mouse and Donald Duck)
- 8 SLN 7B50 — MICKEY AND THE GIANT (Mickey Mouse)
- 8 SLN 7B17 — MICKEY IN DIZZY PILOT (Mickey Mouse)
- 8 SLN 7B3 — MICKEY IN UNCLE TOM'S CABIN (Mickey Mouse)
- 8 SLN 7B1 — MICKEY PLAYS SANTA CLAUS (Mickey Mouse)
- 8 SLN 7B15 — MICKEY'S ELEPHANT (Mickey Mouse)
- 8 SLN 7B37 — MICKEY'S WILD PARTY (Mickey Mouse)
- 8 SLN 7B33 — MODERN INVENTIONS (Donald Duck)
- 8 SLN 7B18 — MOVIE STAR MICKEY (Mickey Mouse)
- 8 SLN 7B25 — THE MYSTIC CASTLE (Silly Symphony)
- 8 SLN 7B9 — SIX SHOOTER MICKEY (Mickey Mouse)
- 8 SLN 7B29 — THE SKATER (Donald Duck)
- 8 SLN 7B24 — SUPER SERVICE (Donald Duck)

Released by Hollywood Film
Length 1-reel, 8mm., approx. 150-feet.

Regularly, \$4.25, Blockhawk's Price \$3.49

A group of Walt Disney cartoons in their full original length, every one an Academy Award Winner. And every one a real bargain for you 8mm. collectors.

- 8 SLN 5B485 — ALPINE CLIMBERS
- 8 SLN 5B490 — COUNTRY COUSIN
- 8 SLN 5B489 — FLOWERS AND TREES
- 8 SLN 5B488 — MOTHER PLUTO
- 8 SLN 5B487 — MOVING DAY
- 8 SLN 5B486 — WHO KILLED COCK ROBBIN?

LAUREL AND HARDY COMEDIES

Released by Library Films
Length 1-reel, 8mm., approx. 150-feet.

Regularly, \$5.95, Blockhawk's Price \$4.98

Laurel and Hardy are comedians of the old school, and there's nothing coming out that's as funny as their best material of the 1920's. In these, you get some of the best!

- 8 SLN 10B1 — BRATS
- 8 SLN 10B44 — COUNTY HOSPITAL
- 8 SLN 10B5 — DIXIE WORKS
- 8 SLN 10B11 — HOG WILD
- 8 SLN 10B12 — THE HOOSIEBOY

GENE AUTRY WESTERNS

Released by Hollywood Film
Length 1-reel, 8mm., approx. 150-feet.

Regularly, \$4.25, Blockhawk's Price \$3.49

- 8 SLN 50B38 — LOADED GUNS with Gene Autry
- 8 SLN 50B39 — MYSTERY OF THE INDIAN UPRISING with Gene Autry
- 8 SLN 50B40 — WILD BOAN with Gene Autry

CHARLIE CHAPLIN COMEDIES

Released by Official
Length 1-reel, 8mm., approx. 150-feet.

Regularly, \$5.95, Blockhawk's Price

A group of Charlie Chaplin comedies edit material produced in the very early years of Chaplin's fame.

- 8 SLN 10B2 — THE CHAMPION
- 8 SLN 10B4 — THE FACE ON THE BAR FLOOR
- 8 SLN 10B10 — BITS OF THE PAST
- 8 SLN 10B14 — IN THE PARK
- 8 SLN 10B56 — LAUGHING GAS

Released by Hollywood Film
Length 1-reel, 8mm., approx. 150-feet.

Regularly, \$4.25, Blockhawk's Price

This group of Charlie Chaplin comedies was filmed a year or two later than the group and have been re-edited from their original lengths.

- 8 SLN 10B42 — CAUGHT IN A CABARET
- 8 SLN 10B40 — DOUGH AND DYNAMITE
- 8 SLN 10B43 — HIS PREHISTORIC PAST
- 8 SLN 10B41 — HIS TRYSTING PLACES

ABBOTT AND COSTELLO COMEDIES

Released by Castle and Official
Length 1-reel, 8mm., approx. 150-feet.

Regularly, \$5.95, Blockhawk's Price

Abbott and Costello as today's top comic in Hollywood. These 1-reel films, cut from their best features, contain sequences with laughs!

- 8 SLN 10B85 — FUN ON THE RUN, The Guild Variety Show: The Amos and Andy game! It's a knockdown, draught fight as the two canies panic the crowd! They're yued by girls and gamblers for a wild splitting chase. The climax is a riot of a laugh! Castle.

- 8 SLN 10B9 — HIGH FLYERS. They had a plane with one pilot and it's the fall-out as they decide to take firing lessons. Bud loops and rolls the plane for laughs as fire engines and ambulances fan below as the boys to make their biggest hit! They do now! Castle.

- 8 SLN 10B15 — KITCHEN MECHANICS. Low to a gas and pump panel! Two to go to work and they spot a broth but spill the hip-deep! They get all stuck up with molad deep in the dough for a sorry pay-off. De this carnival of comedy with crazy mood!

- 8 SLN 10B23 — MIDGET CAR MANIA! Gays are delighted once at the madest car when Costello takes off in a souped-up mid as the race starts. He mixes a bit as mixes a laugh and a thrill when he poises the fence and into a wild and hilarious Castle.

- 8 SLN 10B27 — NO INDIANS, PLEASE! Baldy innocence these puckish madcap in Indian law — and what bad breaks follow hungry reeking yids like demons after the hapless Buz! Over summation across the cliff-top trails they drive with merry mizade them! Castle.

- 8 SLN 10B25 — OH! MY ACHIN' TOOT is a zany one! Lou's toothache is a B screen! You'll love with laughter at Lo to the psychiatrist's office! Official.

- 8 SLN 10B20 — SCROTORS AND MUSCLE! Get together! Bud starts the fun. The I-ties! Buster Bud, Bud and lets Lou. Bud thinks they've made Lou strong enough the Mashed Marvel! It's a struggle! Laugh! to a shocked-up roaring finish! Castle.

- 8 SLN 10B32 — RIOT ON ICE. Bud and L torious fun at a skating rink where Lou is caught on the ice. Lou cracks the ice, goes through an hole, drowns, snuck back grabbing a post and wrecking the building and not of laughs to a mad and merry finish! Castle.

JOHNNIE MACK BROWN

8 SLN 5086 - CODE OF COURAGE. Jim Binstner, in a terrific battle for law and order, traps an outlaw gang to save Judge Harkins and daughter Miller. He proves that the Mayor is the head of the gang and brings him to justice.

8 SLN 50825 - DESPERATE TRAILS. An unusual "Western" with comedy as well as exciting action. Johnnie does more than capture a rustler gang. He makes them look so ridiculous, the whole town laughs - hurting them more than slugs from his guns.

8 SLN 50824 - LAWLESS FRONTIER. Gun blaze along the famed "Cherokee Strip" as Jeff is unjustly jailed for the killing of his pal, Tom. He escapes in time to marry Tom's sister and help her regain her claim in a showdown battle with gamblers unmasked as the killers.

8 SLN 50818 - WESTERN FEUD. Sally Brooks is kidnapped to prevent testimony in a murder trial. Jim McPhail discovers her hideout, rushes her to the court room where she captures a rustler gang as the guilty men attempt an escape that fails.

KIRBY GRANT

8 SLN 5082 - BLAZING GUNS. Law and order are non-existent until the Marshal succeeds in capturing one member of the Todd gang. A raid on the jail is attempted and in a terrific gun battle the Marshal unmasked the Sheriff as the secret leader of the gang.

8 SLN 5089 - CUNDTOWN. Outlaws disguised as Indians are expelled by Buckskin, a girl rancher. The gang tries to wipe out the town, but Buckskin and her neighbors stand them off and finally restore order in a midnight battle amidst blazing buildings.

8 SLN 50819 - WESTERN HONOR. Jeff Gordon sets out to prove Dorothy's father innocent of the murder of Jeff's brother. A stagecoach holdup gives a clue to the real murderers and Jeff risks his life to prove Dorothy's father innocent.

ADVENTURE

**Released by Sterling/Hawley-Lord
Length 1-reel, 8mm., approx. 150-feet.
Regularly, \$5.95. Blackhawk's Price \$4.98**

8 SLN 50837 - BLUE WARRIORS OF THE PACIFIC. Sailingship at its best - off Asaipuco, Mexico.

8 SLN 50855 - FUR AND FEATHERS IN ALASKA. Wild bear, deer, duck, geese and Sand Pipers - in a revealing study of Alaskan wildlife.

8 SLN 50863 - KENAI BIG GAME. Wildlife on the Kenai Peninsula in Alaska.

8 SLN 50871 - PHEASANT FEVER. Behind the scenes in the training of bird dog.

8 SLN 508114 - SALT WATER WONDERLAND. Presents many varieties of tropical fish and marine life - filmed at the world's largest Oceanarium, Marineland, Florida.

8 SLN 50899 - THRILL RIVER. Wild animals in a struggle for survival along the Albert Nile River in Equatorial Africa.

8 SLN 508104 - WILD FOWL IN SLOW MOTION. A remarkable study in grace and beauty of wild fowl in flight.

**Released by Castle
Length 1-reel, 8mm., approx. 150-feet.
Regularly, \$5.95. Blackhawk's Price \$4.98**

8 SLN 45811 - FLYING ACTION. A full century of flight is seen in spectacular reverse - from Egyptian space ships, Wild West air battles, and today's jet jets, with the daring patterns and "tricks" in between.

8 SLN 45812 - HIT THE SLICK. A thrilling story of the parachute - and the daredevils who jump.

8 SLN 70810 - WILD HORSE AND THE LITTLE BRAVE. The story of "Beauty," a wild colt, and an Indian boy who saves his life from "Beauty" has an opportunity to return the favor and does so in a spectacular war.

WESTERNS

**Released by Castle
Length 1-reel, 8mm., approx. 150-feet.
Regularly, \$5.95. Blackhawk's Price \$4.98**

HOPALONG CASSIDY

8 SLN 5081 - BAR 20 RIDES AGAIN. Hopalong, searching for secret hideout of cattle thieves, locates Dave Camp and cleverly rigs a magnificent trap to locate a fire on a nearby peak. When the sun starts the smoke signal, the ranchers ride in and the entire gang is captured.

8 SLN 50820 - BORDER JUSTICE. Losses of cattle cause a deadly feud between two ranchers which ends when Hopalong Cassidy discovers a clue that proves rustlers are at work. When the gang hideout is found, Hoppy dauntlessly climbs a cliff to get them from the rear. His blazing gun and a thrilling battle on mountain crags.

8 SLN 50821 - DANGER TRAIL. When El Toro, notorious bandit, crosses the border and saves Hopalong Cassidy from quicksand, Hoppy learns that the bandit's little boy has been kidnapped. On El Toro's promise to return home, Cassidy risks his life to save the boy and regenerates an outlaw.

8 SLN 50810 - HEART OF THE WEST. Hopalong suggests a fence across a narrow valley to stop rustlers driving stolen cattle through. They stampede a huge herd to crash the fence and Hoppy plans dynamite charges to turn the crazed animals just in time.

8 SLN 50822 - PRABIE VENGEANCE. When Hopalong's pal Johnnie disappears because he is falsely accused of a shooting and robbery, Hoppy's shrewd work uncovers Johnnie's hideout. His sudden appearance aids Johnnie in escaping from a deadly trap. Together, they prove his innocence and battle the real criminals to a finish in a blazing climax.

8 SLN 50817 - THREE ON A TRAIL. Following the hold-up of a stage, Hopalong organizes a company of ranchers to capture the bandit gang holed-up in Kane's saloon. During an exciting gun battle, Hoppy risks his life to dynamite the building, capturing the outlaws.

TOM MIX

8 SLN 50844 - GUNS OF VENGEANCE. When Tom Detry captures four bandits the Sheriff has failed to arrest, the ambitious official "frames" him, leaving defeat on Election Day. In an exciting gun battle with the sheriff and his friends, Detry wins over with the help of his innocent horse, "Tony."

8 SLN 50845 - TERROR TRAIL. Tom, special agent appointed by the Governor, captures a gang of horse thieves whose friends, including the Mayor, immediately arm them and allow them to shoot their way to freedom. With the aid of his horse, "Tony," Tom turns the tables in an exciting climax.

TEX WILLIAMS

8 SLN 5085 - CHEYENNE COWBOY. Buck McClelland, co-owner of a ranch, suspects he is being robbed and takes a job as a cowboy to investigate. He makes a count of cattle the farmers sell and discovers a theft that leads to an exciting climax.

8 SLN 50826 - PRABIE PIRATES. All the romantic atmosphere of the old West pervades this story. Tex, as a dandy freight line driver, wipes out lawless rangers in a spectacular fist fight and gun battle. Fast-moving action and thrills.

8 SLN 50825 - WEST OF LARAMIE. Tex, the Sheriff, tries to persuade Johnson, a wealthy ranch owner, not to break the law in driving stolen Government lands. Outlaws provoke trouble and when Tex captures them, Johnson admits he was in the wrong.

TRAVELS

**Released by Castle
Length 1-reel, 8mm., approx. 150-feet.
Regularly, \$5.95. Blackhawk's Price \$4.98**

Here is a wide range of travel films that may contain one on the vacation spot nearest to your heart. And, not thing about this kind of film - it rarely goes old!

8 SLN 2581 - AMERICA'S WONDERLANDS. Enjoy in the comfort of your living room the nation's most spectacular sights! Niagara, Crater Lake, Columbia River, Yosemite, Mount Rainier, the Monterey Peninsula - America's inspiring scenic wonders picked into one enchanting film.

8 SLN 2583 - BALL. A dream-world filmed for you! Ancient temples and symbols of age-old faiths are seen. Here, lovely maidens weave strange dance patterns with slim, graceful bodies. An enchanting home movie.

8 SLN 2584 - BANFF AND LAKE LOUISE. Among resorts in the Canadian Rockies are seen in this fascinating travel film peering the famous Skyline Trail, and other attractions together with cold weather scenes of great winter sports.

8 SLN 2585 - BELLES OF THE SOUTH SEAS. From Tahiti to New Zealand and on remote Pacific islands rarely visited by cameramen, the native women provide amazing contrasts, romances, mystery and exotic sights fill this reel!

8 SLN 2586 - BERMUDA. Bermuda presents all the reasons for her popularity in this film. From quiet streets of very British towns to the resorts, the beaches and the racing activities, here is more of Bermuda than most tourists see! Screen it before your visit - enjoy it as a reminder of your vacation.

8 SLN 2588 - CALIFORNIA PICTURE BOOK. It would take months actually to see California as this reel presents the entire state before you. Mt. Shasta, the giant redwoods, Lake Tahoe, the Monterey Peninsula, Santa Barbara and, of course, the movie capital - Hollywood!

8 SLN 25814 - ESCAPE IN CANADA. High spots of great interest in the enormous country north of the border are seen as opportunities for escape from modern civilization. Though great cities are here, there are vast wilderness areas of grandeur and unspoiled beauty made safe for the camper or sportsman through the efficiency of the famed Northwest Mounted Police. A home movie for many enjoyable showings!

8 SLN 25816 - FLORIDA HOLIDAY. Glimpses of ancient, historic landmarks, unusual features of Florida - and much that is little known, is shown in this movie, such as the land snappers, and a typical Seminole village deep in the fastness of the jungle.

8 SLN 25818 - GLACIER NATIONAL PARK. The imperceptible movement of millions of tons of ice has carved out a breath-taking wilderness of lofty trails, allowing trout streams, Indian encampments, and the home of the rarely seen Rocky Mountain sheep. To own this home movie is to know an amazing area of America.

8 SLN 25821 - GRAND CANYON. The outstanding marvel of scenic America and the oldest story nature has ever told! The camera rears the rim and valleys of this gigantic chasm, ever seeing new and astonishing scenes in a constantly changing pattern. The sound version adds the charm of electricity in your cowboy quartet!

8 SLN 25825 - HAWAII. Visit the city of Honolulu, climb to Kilauea's crater with its awe-inspiring rivers of fire and ride a surf-boat in the long, racing Pacific swells. The real Hula-hula is a feature of this Cass. Film and nowhere is it performed as in Hawaii.

Turn the Page for More New 8mm. Bargains

USC School of Cinematic Arts
Hugh M. Hefner Picture Archive
LOBSTER

Please order by number and title.

BUYS IN 2" x 2" COLOR SLIDES

Here are more than 100 sets of beautiful color slides at an almost unbelievable price. Everyone can afford to own many sets at this bargain figure. They are of top quality — and look at the wide range of subjects! You can view these in the Pictar Viewer described on this page, or project them in your own slide projector. Each set consists of 10 full color 2x2 mounted slides. The list price on these is \$1.00 per set. Blackhawk has them for you at only.....

89¢ per set

Traveling in America

- S-1 ALONG NEW YORK'S HUDSON RIVER
- S-2 RODEO IN CALIFORNIA
- S-3 AROUND NEW YORK CITY
- S-4 TIMES SQUARE TO CENTRAL PARK
- S-5 SALT LAKE CITY, UTAH
- S-6 MAGNIFICENT NIGARA FALLS
- S-7 HOLLYWOOD TO 'FRISCO
- S-8 NEW YORK CITY — MIDTOWN WESTSIDE
- S-9 NEW YORK CITY — MIDTOWN EASTSIDE
- S-10 NEW YORK CITY — UPTOWN
- S-11 NEW YORK CITY — FINANCIAL DISTRICT
- S-12 CHICAGO, ILLINOIS
- S-13 NOTRE DAME UNIVERSITY
- S-14 DENVER, COLORADO
- S-15 WISCONSIN DELLS
- S-16 PETRIFIED FOREST
- S-17 MACKINAC ISLAND, MICHIGAN
- S-18 BRYCE CANYON NATIONAL PARK
- S-19 GRAND CANYON NATIONAL PARK
- S-20 GRAND TETON NATIONAL PARK
- S-21 MT. RAINIER NATIONAL PARK
- S-22 GLACIER NATIONAL PARK
- S-23 THE SPECTACULAR GRAND TETONS
- S-24 WINTER SPLENDORS OF THE GRAND TETONS
- S-25 MOJAVE DESERT SNOW SCENES
- S-26 CRATER LAKE NATIONAL PARK
- S-27 ZION NATIONAL PARK
- S-28 YELLOWSTONE NATIONAL PARK
- S-29 SEQUOIA NATIONAL PARK
- S-30 SANTE FE, NEW MEXICO
- S-31 LOS ANGELES, CALIFORNIA
- S-32 HOLLYWOOD, CALIFORNIA
- S-33 SAN DIEGO, CALIFORNIA
- S-34 MIAMI, FLORIDA
- S-35 ST. AUGUSTINE, FLORIDA
- S-36 TARPOON SPRINGS, FLORIDA
- S-37 ST. PETERSBURG, FLORIDA
- S-38 UFFY WEST, FLORIDA
- S-39 CYPRESS GARDENS, FLORIDA
- S-40 DAYTONA BEACH, FLORIDA
- S-41 SILVER SPRINGS, FLORIDA
- S-42 MODELS, CYPRESS GARDENS, FLORIDA
- S-43 RARE BIRD FARM, MIAMI
- S-44 FLORIDA INDIANS AND VILLAGES
- S-45 PARROT JUNGLE, MIAMI
- S-46 ALLIGATOR AND OSTRICH FARM
- S-47 FLORIDA BOATS (Luxury Fishing Craft)
- S-48 ARKANSAS OZARKS
- S-49 OKLAHOMA
- S-50 NEW ORLEANS, LA.
- S-51 ABRAHAM LINCOLN IN ILLINOIS
- S-52 ROCKY MOUNTAIN NATIONAL PARK

- S-93 COLORADO
- S-94 GARDEN OF THE GODS
- S-95 ROCKY MOUNTAIN RAMBLINGS
- S-101 NEW YORK CITY
- S-102 MASSACHUSETTS
- S-103 BOSTON, MASS.
- S-104 SCENIC NEW HAMPSHIRE
- S-105 WINTER IN VERMONT
- S-106 PHILADELPHIA, PENNA.
- S-107 WILLIAMSBURG, VA.
- S-108 MT. VERNON, VA.
- S-109 HISTORICAL OLD VIRGINIA
- S-110 SKYLINE DRIVE, SHENANDOAH NAT'L PARK, VA.
- S-111 GREAT SMOKY MOUNTAINS
- S-112 THE BEAUTIFUL OHIO (Ohio River Scenes)
- S-113 ACADIA NATIONAL PARK (Maine)
- S-114 CHERRY BLOSSOM TIME IN WASHINGTON, D.C.
- S-115 NIAGARA FALLS, (Set No. 2)
- S-116 WASHINGTON, THE CITY BEAUTIFUL
- S-117 WASHINGTON, THE RENOWNED CITY
- S-118 NIAGARA FALLS (Set No. 1)
- S-119 MONUMENT VALLEY
- S-120 DESERT FLOWERS
- S-121 RAINBOW SPRINGS, FLORIDA
- S-122 FLORIDA FLOWERS (Set No. 1)
- S-123 FLORIDA FLOWERS (Set No. 2)
- S-124 SUNKEN GARDENS, ST. PETERSBURG
- S-125 FLOWERS AT SUNKEN GARDENS, ST. PETERSBURG
- S-126 KANSAS CITY, MISSOURI
- S-127 ST. LOUIS, MISSOURI
- S-132 CHARLESTON, S. C.
- S-133 CLEVELAND, OHIO
- S-134 GLORY OF YELLOWSTONE
- S-135 ALONG YELLOWSTONE TRAILS
- S-136 SANTA BARBARA, CALIF.
- S-137 MISSIONS — CALIFORNIA
- S-138 BIG BEND NATIONAL PARK
- S-139 HIALEAH RACE TRACK, FLORIDA
- S-140 MIAMI BUSINESS DISTRICT
- S-141 MIAMI WATERFRONT
- S-142 MIAMI ENVIRONS
- S-143 CALIFORNIA WONDERLAND
- S-144 NEW YORK CITY — RADIO CITY
- S-145 COLORADO AND ESTES PARK
- S-148 GRANDEUR OF THE TETONS
- S-149 HOOVER DAM

For Children

- S-45 DAY AT THE CIRCUS
- S-46 UNDER THE BIG TOP
- S-47 STORY OF PINNOCHIO
- S-48 PETER RABBIT
- S-49 TARZAN
- S-50 FUN AT THE FAIR
- S-54 BROOKFIELD ZOO

Traveling Abroad

- S-18 PARIS AND NOTRE DAME CATHEDRAL LANDMARKS IN PARIS
- S-20 PARIS AND POINTS OF INTEREST
- S-21 LOUVRE AND RIVER SEINE
- S-22 SCENES IN MADRID
- S-23 VISITING BLARNEY CASTLE
- S-24 PAST AND PRESENT IN LIMERICK
- S-25 ROME AND LANDMARKS
- S-26 ROME, RUINS, MT. VESUVIUS
- S-27 ROME, HAS ANCIENT SPLENDOR
- S-28 VATICAN CITY AND RELIGIOUS ROME
- S-29 ROME — THE OLD AND NEW
- S-30 GENOA — AND COLUMBUS
- S-31 VENICE, CITY OF CANALS
- S-32 PYRAMIDS TO CAIRO
- S-33 CAIRO — ANCIENT AND MODERN
- S-34 LANDMARKS ON THE NILE
- S-35 STREET SCENES IN BOMBAY
- S-36 MOUNTAINOUS SWISS MAJESTY
- S-37 SWISS PANORAMA
- S-38 ATHEN AND THE PAST
- S-39 MEXICO — TOURIST PARADISE
- S-40 TOURING MEXICO
- S-41 BERMUDA — VACATION PLAYGROUND
- S-42 CUBA — SIGHTSEEING HAVANA
- S-43 CLASSIC ENGLAND
- S-44 HAIFA AND TEL AVIV
- S-46 ALASKA
- S-47 HAWAII
- S-98 SCENIC HAWAII, AROUND HONOLULU
- S-99 HASSAU
- S-100 QUEBEC CITY, CANADA
- S-128 COLORFUL JAPAN
- S-129 FESTIVAL TIME IN JAPAN
- S-130 OTTAWA, CAPITOL OF CANADA
- S-131 VANCOUVER, B. C., CANADA
- S-150 ALASKA — AMERICAN OUTPOST
- S-151 CANADA
- S-152 NEWFOUNDLAND
- S-153 AUSTRALIA

Show Girls

- S-51 PIN UP GIRLS
- S-52 BACKSTAGE
- S-53 ICE CAPEDES

Religious

- S-55 PASSION PLAY



USC School PICTAR VIEWER of Cinematic Arts for 2" x 2" slides

A convenient, lightweight viewer for 2"x2" slides, streamlined in design, made of molded plastic. Makes possible enlarged viewing of any 2"x2" slide against any light source such as window or lamp.

E-58 PICTAR VIEWER, purchased alone

\$1.00

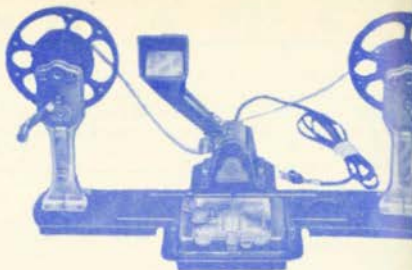
E-58 PICTAR VIEWER, in conjunction with any one set of 2"x2" slides listed on this page, only

\$1.79

(6) 7

MANSFIELD 8MM. MOVIE EDITOR

This Editor, consisting of Viewer, Gears Rewinds, and Automatic Dry Splicer, all mounted on a metal base and beautifully finished in blue and gold, is just about the best buy in 8mm. equipment you'll find in many a day. It is easy to operate, handles 8mm. reels up to 400' capacity, and meets the requirements of both amateur and professional. The various parts are available individually as well as in the complete editor, so additional information on the set may be obtained by consulting the more detailed descriptions given below on the component parts. One of the most unusual things about this fine piece of equipment is its price. Regularly \$25.95, Blackhawk can bring the Mansfield Movie Editor (EN-33) to you for just..... **\$19.95**



MANSFIELD VIEWER

The optically ground and polished lens system and brilliant viewing screen on this viewer give sharp, clear, 1 1/10" x 1 1/4" images, free from distortion. Of die-cast metal construction, it is attractively finished in blue Hammerglid. Illustrated above as center unit of Movie Editor. Regularly priced at \$10.50, the Mansfield Viewer Unit (EN-34) is available from Blackhawk at the low price of..... **\$7.95**

MANSFIELD REWINDS

The rewinds will handle reels up to 800' capacity. They are equipped with fingertip controlled drag brakes, and their gear ratio of 3 to 1 makes for easy winding. They are of metal construction and have a gold anodized finish. The regular price of these rewinds is \$7.50. Blackhawk offers them to you (somewhat similar to those pictured above as part of the Editor), unit EN-35, for only..... **\$5.95**

MANSFIELD AUTO-SPLICER

It has dual scraping blades with radial action, chrome steel film cutters, ribbed tortion-free operation, an automatic spring when splicing is completed, and a unipolished rubber base. The body is finished Hammerglid. It gives a faster, cleaner splice. Film enthusiasts know that dry scraping is a really permanent splice. All this (the part of the Editor above) would regularly Blackhawk has the Auto-Splicer (EN-31) at the astonishing price of.....

MANSFIELD JUNIOR SPICER



A precision-made splicer at a remarkably low price, and one that will give years of satisfactory use. It comes complete as pictured, with splicer, bottle of film-splicing cement, water bottle and scraping blade which is inserted in bottle cap, all mounted on a wooden base. The splicer itself is of heavy gauge metal construction anodized in silver and gold. The usual price is only \$3.50, but Blackhawk is able to offer you the Junior Splicer (EN-32) at the even more surprising price of only..... **\$2.79**

8mm. REELS AND CANS

These reels and cans, like our 16mm. line, are made by the top man in the business. The reels are stamped from a good grade of steel with spring to resist bending, yet are light in weight. Cans are and achieve maximum rigidity. Reels and cans are of matching baked enamel finish.

EN-11 - 200' capacity reels. 49c each	EN-12 - 200' capacity (Prices are for reels, or cans, or assortments of both) 6 3 for \$1.29
EN-13 - 400' capacity 8mm. reels. 59c each	EN-14 - 400' capacity 8mm. reels. (Prices are for reels, or cans, or assortments of both) 6 3 for \$1.49

DA-LITE BEADED SCREENS

Here's a bankrupt stock of brand new beaded screens at prices like wholesale! These screens are of recent manufacture, although not all may have exactly the same finish or hardware in which Da-Lite is currently supplying the items. Here is your chance to buy a top-line, nationally advertised brand, at savings of up to one-half off current list prices.

30" x 40" Da-Lite Model B Map-Type Wall Screen Regular price, \$12.00. Blackhawk's Money Saving Price.....	\$7.95
37" x 50" Da-Lite Challenger Tripod Screen Regular price, \$29.70. Blackhawk's Bargain Price.....	\$16.95
37" x 50" Da-Lite Versafold Tripod Screen Regular price, \$24.50. Blackhawk's Economy Price.....	\$14.95
40" x 40" Da-Lite Model B Map-Type Wall Screen Regular price, \$13.50. Blackhawk's Money-Saving Price.....	\$8.95
50" x 50" Da-Lite Model B Map-Type Wall Screen Regular price, \$19.00. Blackhawk's Economy Price.....	\$11.95

Because of new postal regulations, all of these screens exceed maximum dimensions permitted by the Post Office Department. Therefore, screens will be shipped Railway Express collect for transportation. If your express office is different from your residence address, please show both addresses.

Special on Film Cans

We made a lucky buy on 8mm. cans, and look at bargains we can give you in these items! These cans of high quality, made of a light grade of steel that protect your films for years, and finished in gun gray baked enamel. The embossing on these cans is in concentric rings that makes the cans interlock lightly when stacked - preventing slipping, sliding stacks of film. When you stack these cans, they stay stacked! They are new, but slightly shopworn - some scratches or nicks in finish. It won't impair the good use you'll get from them.

8mm. 200' capacity cans, EN-55

Six for \$1.79 Twelve for \$2.

READ THIS BEFORE YOU ORDER!

Items listed here are priced not to include postage, packing and insurance. On C.O.D. shipments, postage will be collected along with the cost of films. However, if you wish to remit in full with your order, you may include the appropriate amount to cover packing, postage and insurance, based on your address as covered by the following three territorial groupings:

	A	B	C
LINE 1 Shipment of one 8mm. print	.10	.10	.10
LINE 2 Shipment of two 8mm. prints	.20	.25	.30
LINE 3 Shipment of three or four 8mm. prints	.25	.40	.45
LINE 4 Shipment of five or six 8mm. prints	.30	.50	.55
LINE 5 Shipment of seven or eight 8mm. prints	.35	.60	.70
LINE 6 Shipment of nine or ten 8mm. prints	.40	.75	.85
LINE 7 Shipment of eleven or twelve 8mm. prints	.45	.85	1.00

Each three 50' 8mm. prints count as one 8mm. print as shown on line 1. Mansfield Senior 8mm. Editor takes line 7 amounts. Mansfield Viewer takes line 5 amounts. Mansfield Rewinds and splicers, line 3 amounts. Screens run at 60c in group A territories; \$1.00 in group B territories and \$2.00 in group C territories when they are available. When not available, they will be shipped

by express collect for transportation charges. Ambassador Reel Cases A, B, C, D, E, F, G, H, I, J, K, L, M, N, O, P, Q, R, S, T, U, V, W, X, Y, Z, AA, AB, AC, AD, AE, AF, AG, AH, AI, AJ, AK, AL, AM, AN, AO, AP, AQ, AR, AS, AT, AU, AV, AW, AX, AY, AZ, BA, BB, BC, BD, BE, BF, BG, BH, BI, BJ, BK, BL, BM, BN, BO, BP, BQ, BR, BS, BT, BU, BV, BW, BX, BY, BZ, CA, CB, CC, CD, CE, CF, CG, CH, CI, CJ, CK, CL, CM, CN, CO, CP, CQ, CR, CS, CT, CU, CV, CW, CX, CY, CZ, DA, DB, DC, DD, DE, DF, DG, DH, DI, DJ, DK, DL, DM, DN, DO, DP, DQ, DR, DS, DT, DU, DV, DW, DX, DY, DZ, EA, EB, EC, ED, EE, EF, EG, EH, EI, EJ, EK, EL, EM, EN, EO, EP, EQ, ER, ES, ET, EU, EV, EW, EX, EY, EZ, FA, FB, FC, FD, FE, FF, FG, FH, FI, FJ, FK, FL, FM, FN, FO, FP, FQ, FR, FS, FT, FU, FV, FW, FX, FY, FZ, GA, GB, GC, GD, GE, GF, GG, GH, GI, GJ, GK, GL, GM, GN, GO, GP, GQ, GR, GS, GT, GU, GV, GW, GX, GY, GZ, HA, HB, HC, HD, HE, HF, HG, HH, HI, HJ, HK, HL, HM, HN, HO, HP, HQ, HR, HS, HT, HU, HV, HW, HX, HY, HZ, IA, IB, IC, ID, IE, IF, IG, IH, II, IJ, IK, IL, IM, IN, IO, IP, IQ, IR, IS, IT, IU, IV, IW, IX, IY, IZ, JA, JB, JC, JD, JE, JF, JG, JH, JI, JJ, JK, JL, JM, JN, JO, JP, JQ, JR, JS, JT, JU, JV, JW, JX, JY, JZ, KA, KB, KC, KD, KE, KF, KG, KH, KI, KJ, KK, KL, KM, KN, KO, KP, KQ, KR, KS, KT, KU, KV, KW, KX, KY, KZ, LA, LB, LC, LD, LE, LF, LG, LH, LI, LJ, LK, LL, LM, LN, LO, LP, LQ, LR, LS, LT, LU, LV, LW, LX, LY, LZ, MA, MB, MC, MD, ME, MF, MG, MH, MI, MJ, MK, ML, MM, MN, MO, MP, MQ, MR, MS, MT, MU, MV, MW, MX, MY, MZ, NA, NB, NC, ND, NE, NF, NG, NH, NI, NJ, NK, NL, NM, NN, NO, NP, NQ, NR, NS, NT, NU, NV, NW, NX, NY, NZ, OA, OB, OC, OD, OE, OF, OG, OH, OI, OJ, OK, OL, OM, ON, OO, OP, OQ, OR, OS, OT, OU, OV, OW, OX, OY, OZ, PA, PB, PC, PD, PE, PF, PG, PH, PI, PJ, PK, PL, PM, PN, PO, PP, PQ, PR, PS, PT, PU, PV, PW, PX, PY, PZ, QA, QB, QC, QD, QE, QF, QG, QH, QI, QJ, QK, QL, QM, QN, QO, QP, QQ, QR, QS, QT, QU, QV, QW, QX, QY, QZ, RA, RB, RC, RD, RE, RF, RG, RH, RI, RJ, RK, RL, RM, RN, RO, RP, RQ, RR, RS, RT, RU, RV, RW, RX, RY, RZ, SA, SB, SC, SD, SE, SF, SG, SH, SI, SJ, SK, SL, SM, SN, SO, SP, SQ, SR, SS, ST, SU, SV, SW, SX, SY, SZ, TA, TB, TC, TD, TE, TF, TG, TH, TI, TJ, TK, TL, TM, TN, TO, TP, TQ, TR, TS, TT, TU, TV, TW, TX, TY, TZ, UA, UB, UC, UD, UE, UF, UG, UH, UI, UJ, UK, UL, UM, UN, UO, UP, UQ, UR, US, UT, UY, UZ, VA, VB, VC, VD, VE, VF, VG, VH, VI, VJ, VK, VL, VM, VN, VO, VP, VQ, VR, VS, VT, VU, VV, VW, VX, VY, VZ, WA, WB, WC, WD, WE, WF, WG, WH, WI, WJ, WK, WL, WM, WN, WO, WP, WQ, WR, WS, WT, WU, WV, WW, WX, WY, WZ, XA, XB, XC, XD, XE, XF, XG, XH, XI, XJ, XK, XL, XM, XN, XO, XP, XQ, XR, XS, XT, XU, XV, XW, XX, XY, XZ, YA, YB, YC, YD, YE, YF, YG, YH, YI, YJ, YK, YL, YM, YN, YO, YP, YQ, YR, YS, YT, YU, YV, YW, YX, YZ, ZA, ZB, ZC, ZD, ZE, ZF, ZG, ZH, ZI, ZJ, ZK, ZL, ZM, ZN, ZO, ZP, ZQ, ZR, ZS, ZT, ZU, ZV, ZW, ZX, ZY, ZZ.