



SP-1... and your Window of Opportunity

Last year, a non-organic grower used SP-1 on their silage acres.

Based on those results, they decided to use the product on ALL of their row crop this season. This is their report.



Observations by the Grower:

"Last year we planted corn in poor conditions, and I think the SP-1 saved our crop. It mellowed out the compacted sidewalls and allowed us to average 21 tons per acre on a plot that should've averaged 18 or less (normally 26-28 tons)".

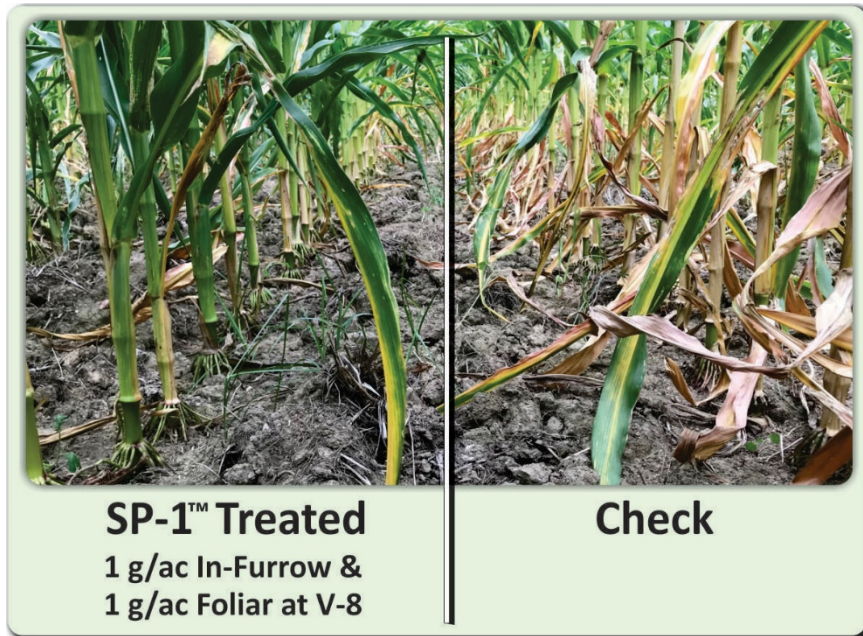


SP-1 applied @
1gal/ac in furrow
w/ 4 gallons of 9-18-9.

- Even on wetter ground with vertical tillage, the soil still crumbles like brown sugar
- Our high clay content soils are acting more and more like a Loam soil... it actually looks like "chocolate cake"
- The SP-1 treated soil dried out about 4 days faster than check.
- Our root systems seem to be developing much faster
- Sidewall compaction in poor conditions last year mitigated itself within days
- Heavy manure applications are decomposing faster
- We observed that SP-1 helped to mitigate stress
- Research showed significant gains on digestibility/starch and minor yield gains

Maybe you've missed the window on corn this year?
Consider including SP-1 with your foliar applications on soybeans.

Across the board, SP-1 is appropriate for all post-emerge applications...
Herbicide, Fungicide, Insecticide, or Nutrient.



In another 2019 Field Trial, an SP-1 treatment improved foliage quality and returned a 10 b/ac increase over check.

These improvements were supported with testing of biological activity conducted by a regional agronomist.

- 48 - 65% increase in soil microbes
- Up to 2x faster soil Infiltration
- 70% better aggregate stability



815.872.1190

Call us today for assistance in using SP-1 with your post-emergent applications.

Douglas Plant Health: AgriEnergy Resources

21417 1950 E. Street

Princeton, IL 61356