



THE
PROTEIN
SOCIETY

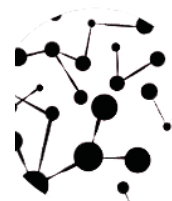
32ND ANNUAL SYMPOSIUM

BOSTON

JULY 9 - 12, 2018

32ND Annual Symposium

Exhibitor & Sponsorship Prospectus





THE
PROTEIN
SOCIETY

About. . .

. . . the Association

The Protein Society is a not-for-profit scholarly society with a mission to advance **state-of-the-art science** through international forums that promote communication, cooperation, and collaboration among scientists involved in the study of proteins. For 31 years, The Protein Society has served as the intellectual home of investigators across **all disciplines**, and from around the world, involved in the study of protein structure, function, and design. The Society provides forums for scientific **collaboration** and **communication** and supports professional growth of young investigators through workshops, networking opportunities, and by encouraging junior researchers to participate fully in the Annual Symposium. As well as the meeting, the Society's prestigious journal, *Protein Science*, edited by Brian Matthews, serves as an ideal platform to further science of proteins in the broadest sense possible.

. . . the Meeting

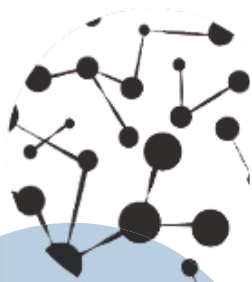
The Protein Society's Annual Symposium is an **international** gathering of 800 protein science leaders and community members. Structured with two concurrent sessions, and spanning 3 and a half days, the Annual Symposium features a multitude of opportunities for networking, with plentiful speaking slots for selected early-career-scientists, and unique workshops for students and educators alike.

The 32nd Annual Symposium takes place July 9 - 12, 2018 in Boston, Massachusetts, at the Boston Marriott Copley Plaza.

. . . the Attendees

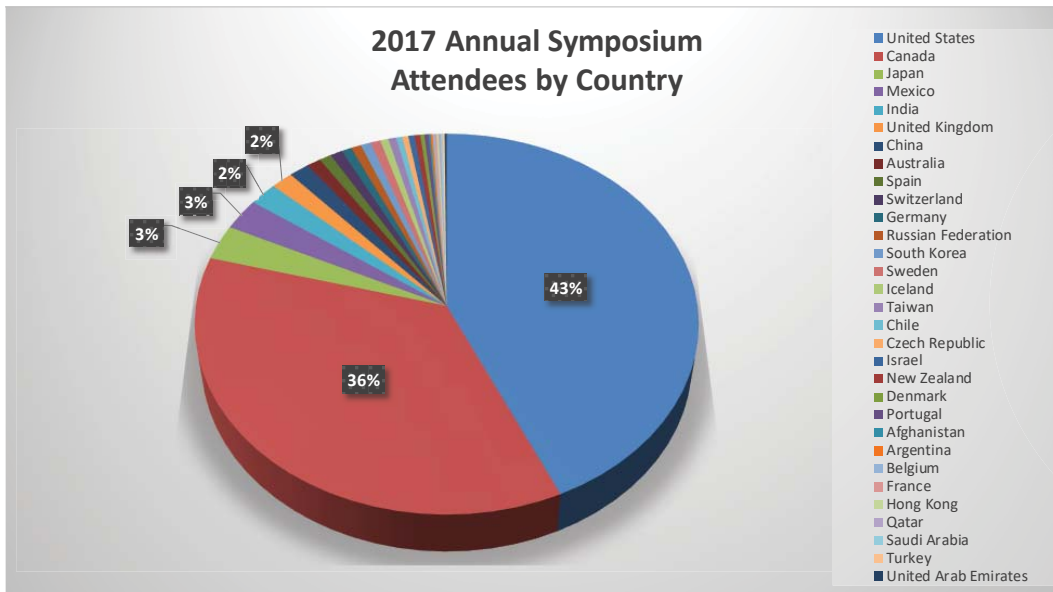
The Protein Society's premier event, our 32nd Annual Symposium, will host 800 chemists, biologists, physicists, mathematicians, students, and educators who share a unifying interest in understanding the nature of proteins.

Working at universities, foundations, institutes, and corporations in more than 50 countries, this truly international community supports the commitment of The Protein Society to foster development of the **next generation** of protein scientists, provide resources for educators and students, and to create productive international forums for protein science that incorporates diverse research interests and experimental approaches.



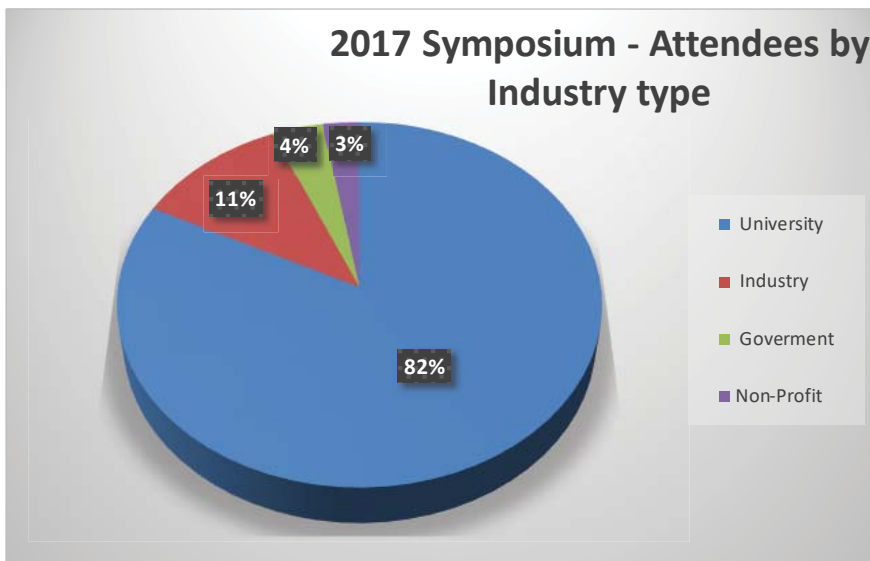
2

Attendee Demographics



The 2017 Annual Symposium hosted attendees from **31 countries**.

Institution Type



Role





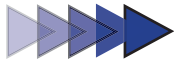
Past Exhibitors

Art Robbins Instruments
 Athena ES
 Aviv Biomedical, Inc
 Base Pair Biotechnologies
 Bio-Rad Laboratories, Inc.
 BiOptix
 Cell Free Sciences Inc.
 Cambridge Healthtech Institute
 Cayman Chemical Company
 EZBiolab
 FASEB
 ForteBio, A Div of Pall Life Sciences
 Garland Science Publishing
 GE Healthcare
 HORIBA Scientific
 Intavis, Inc.
 ISS
 JASCO
 KeraFAST, Inc.
 Malvern Instruments
 Mitsubishi Chemical Corporation
 Molecular Dimensions
 NanoTemper Technologies, Inc.
 Nicoya Lifesciences
 Pall Fortebio LLC
 Practichem
 Pressure BioSciences, Inc.
 ProCube
 Reichert Technologies
 Sierra Analytics
 Sierra Sensors GmbH
 St. Jude Children's Research Hospital
 TA Instruments
 TTP Labtech, Inc.
 Wiley



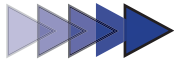
Why Exhibit?

Access



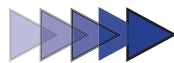
Eight-hundred professional and academic biologists, physicists, and mathematicians attend the meeting. The Society gives a complimentary Post-Show Attendee List to all exhibitors.

See and Be Seen



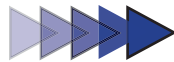
The Annual Symposium delivers cutting-edge research in an **intimate setting where attendees and exhibitors benefit from personalized interaction**. Sponsors and exhibitors will benefit from great foot-traffic and generous signage recognition. The event provides 3 days of exposure, which includes daily mix and mingle evening receptions in the Exhibitor areas. The Society also provides several incentives to attendees to visit exhibitors, including an **exhibitor passport contest and prizes**.

Lead Retrieval



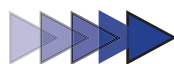
The Protein Society uses iLeads by Bartizan Connects for lead retrieval services. iLeads is a cloud-based, tradeshow-lead-capture app that lets you digitally collect and manage information from all of your exhibit hall sales interactions using your own smartphone or tablet. It lets you instantly distribute leads to your sales team. It's customizable and paper free, works offline, and provides live reporting and digital backup of the list of leads you gather at a show. There is a per-license cost for the Symposium with steep discounts for additional licenses. iLead Data includes scanned attendee info: First Name, Last Name, Email, Complete Mailing Address, Affiliation, Title.

Education



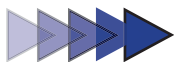
Exhibitors can be **attendees**, too! Exhibitors receive additional opportunities to interact with conference attendees with access to educational sessions.

Technology & Product Demos



Provide attendees with innovations in their field. Give hands-on demos that allow them to **see how technology can revolutionize their work**.

Awareness



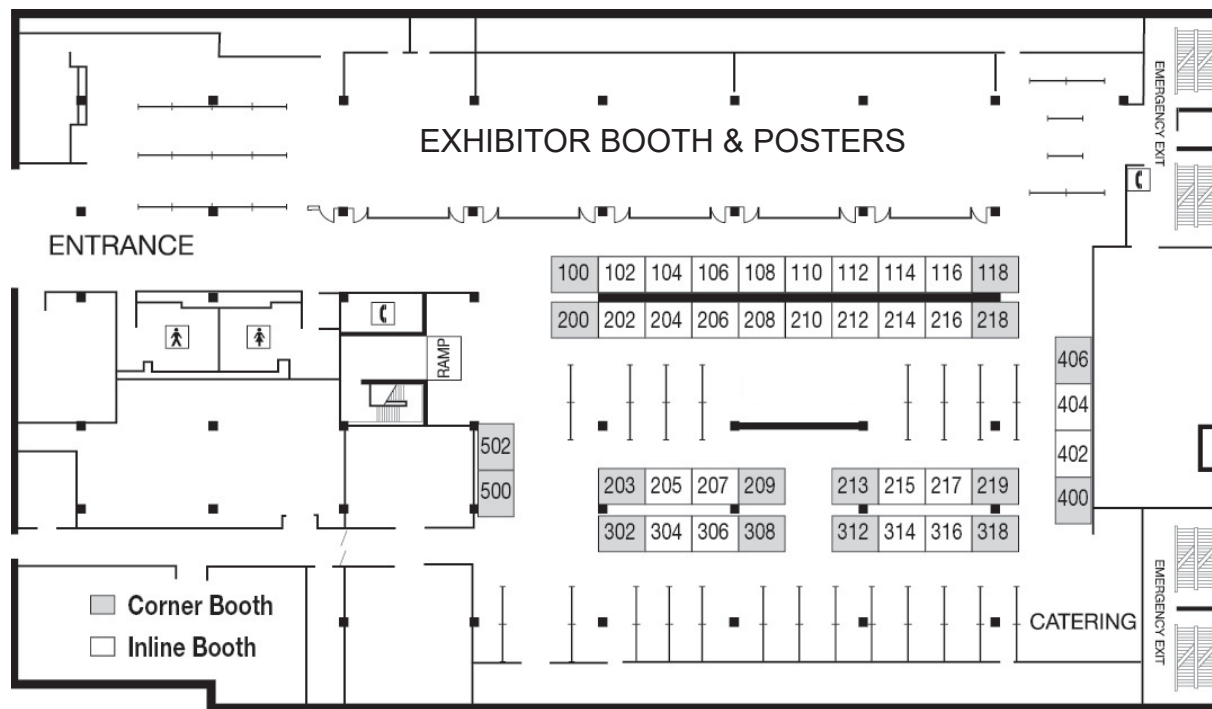
Ensure that attendees remember your company name, product, and/or service by keeping your company at the forefront of the Annual Symposium.



Floor Plan

Exhibitors will be in the same space as the main poster presentations.

Boston Marriott Copley Plaza Floor Plan

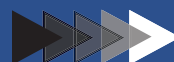


Floor plan subject to change.

Exhibit Booth Package

- 10' x 10' booth
- 8' tall back drape, 3' draped side rails
- Listing in app and website
- 1 complimentary full registration
- 3 exhibit hall only registrations
- Post show attendee list - mailing addresses only

Price for standard 10' x 10'



\$2,400

Booth Assignments

The Protein Society bases priority for booth space assignment on the date in which we receive contracts. Tentative reservations may be made via email and will be held for 10 days. Within this time period, the contract and required booth space fees must be forwarded to The Protein Society, or we will release tentative space. No space will be assigned until we receive both a contract and payment.

Exhibitors wishing to avoid assignment of booth space adjacent to that of a particular competitor should indicate on the contract. Careful consideration will be given to each request, but relocation cannot be guaranteed.

In the event of conflicts regarding booth space requests or conditions beyond the control of the exhibit management, The Protein Society reserves the right to revise, relocate, or reassign exhibit booths at any time for the overall benefit of the Symposium. A revised floor plan will be provided upon request.



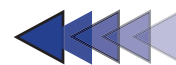
Boston Marriott Copley Plaza
110 Huntington Avenue
Boston, MA 02116



Sponsorship Levels

- One 10'x10' exhibit space.
- Exhibitor Workshop (opportunity to showcase organization).
- Session sponsorship recognition (sole sponsor).
- Prominent platinum-level acknowledgement on meeting signage recognizing sponsors, website, & event app.
- T-shirt logo* (on back of shirt). T-shirts are given to every registered attendee.
- Corporate Logo* and thank you on intersession slide, during the length of the Symposium.
- Recognition in post-Symposium special edition abstract publication (available/distributed on *Protein Science* website).
- Logo* in pre-symposium e-blast sent to all registered attendees.
- Three full conference registrations.
- Three tickets to the President's Reception.
- Unlimited Attendee Tote Bag Inserts.

Platinum
\$10,000
(limited to 1 sponsor)



- One 10'x10' exhibit booth space.
- Acknowledgement on meeting signage recognizing sponsors, website & event app.
- T-shirt logo* (on back of shirt). T-shirts are given to every registered attendee.
- Corporate Logo* and thank you on intersession slide, during the length of the Symposium.
- Logo* in pre-symposium e-blast sent to all registered attendees.
- Two full conference registrations.
- Two tickets to the President's Reception.
- One Attendee Tote Bag Insert.

Gold
\$5,000

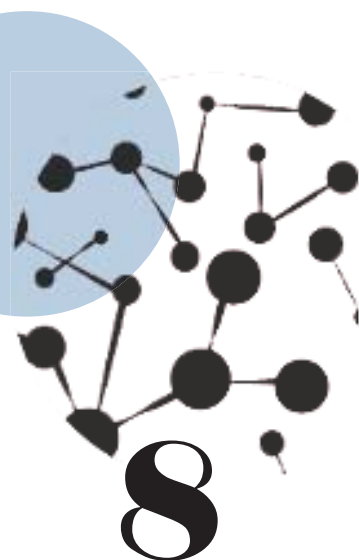


- Acknowledgement on meeting signage recognizing sponsors, website, Program & event app.
- T-shirt logo* (on back of shirt). T-shirts are given to every registered attendee.
- Logo* in pre-symposium e-blast sent to all registered attendees.
- One full conference registration.
- Two tickets to the President's Reception.

Silver
\$2,500



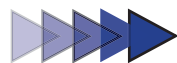
*All logos should be submitted to The Protein Society in EPS, PDF, and PNG format.



Sponsorship Opportunities

Choose one of the options below. You will receive the benefits of that option, and listed as a sponsor on all materials.

Attendee Internet access for the duration of the Symposium; Wi-Fi name and password choice of sponsor. Choice of landing page. Includes program and app recognition of company.



\$5,000

Conference Bag Logo: sponsorship includes company and conference logo given to attendees; two bag inserts.



\$5,000

Members' Cocktail and Hors d'oeuvres Reception: program and app acknowledgement, as well as event signage and verbal mention of sponsorships.



\$4,000

Educator's Networking Luncheon: program and app acknowledgement, verbal mention of sponsorship, cocktail napkins with company logo. RSVP event.



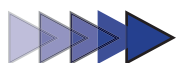
\$3,000

Conference Lanyards: company logo and/or name on the official conference lanyard worn by attendees



\$3,000

Charging Station (multiple available). Will allow attendees to charge their electronics and catch-up on event-related social media. Company logo and acknowledgement of sponsorship included.



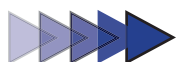
\$2,500

Poster Session Sponsor (three sessions available): poster sessions display the research of our scientists and allows for one-on-one interaction. Sponsors will receive event signage and app recognition. Sessions will take place on 3 consecutive days. Snacks provided.



\$2,000

President's Reception: program and app acknowledgement, verbal mention of sponsorships



\$2,000

Career Panel: program and app acknowledgement, verbal mention of sponsorships. Sponsor can have a participating speaker on the panel.



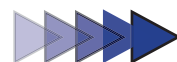
\$2,000

E-Blast: marketing e-mail distributed to all conference attendees by The Protein Society on behalf of the sponsor

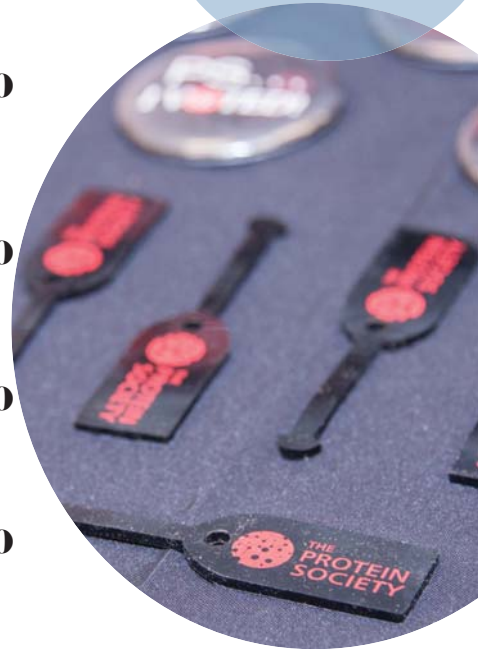


\$1,000

Attendee tote bag insert.



\$500



32nd Annual Symposium

Exhibitor Workshop \$2,000

Take advantage of the opportunity to showcase organization. Can be held during break-fast or lunch. Duration: 45 - 60 min. The Protein Society will provide room at no cost; Organizer responsible for AV and F&B (optional) costs.

E-Blast \$1,000

Customize an e-blast with text (max 500 words), one logo, and one graphic that The Protein Society will send to all attendees prior to the Annual Symposium. This is an exclusive opportunity that will feature ONLY your company. All e-blasts must be approved by The Protein Society. There is also an option to send an e-blast pre and/or post Annual Symposium as well.



Exhibit Space/Sponsorship Contract

The 32nd Annual Symposium of The Protein Society

July 9 - 12, 2018 - Boston Marriott Copley Plaza; Boston, MA

Call: 844-377-6834, x. 701

Email: rcadar@proteinsociety.org



Mail to: The Protein Society

PO Box 1217

Canyon Country, CA 91386

Organization Information

Organization Name: _____

Street Address: _____

City, State, Zip: _____

Primary Contact: _____

Phone: _____

E-mail: _____

Select

1. Booth Space Request: \$2,400 (cost/booth)

No. of Booths Desired 1 _____ 2 _____

Total Cost: _____

Final booth floorplan will be made available in 2018; location preference is given based on commitment date. Exhibitor is responsible for daily cleaning of their booth and will make arrangements with the General Service contractor. Any Exhibitor that has not ordered cleaning for opening day will have their booth cleaned to present an attractive appearance. Cost will be charged to Exhibitor.

2. Sponsorships

Platinum = \$10,000 (limited to one sponsor) _____

Gold = \$5,000 _____

Silver = \$2,500 _____

Total Cost: _____

3. Other Sponsorship Opportunities

Branded wireless internet = \$ 5,000 _____

Conference Bag Logo = \$ 5,000 _____

Members' Reception = \$ 4,000 _____

Educators' Networking Luncheon = \$ 3,000 _____

Conference Lanyards = \$ 3,000 _____

Charging Station = \$ 2,500 _____

Poster Session Sponsor = \$ 2,000 _____

President's Reception = \$ 2,000 _____

Career Panel = \$ 2,000 _____

Total Cost: _____

4. Advertising

Exhibitor Workshop = \$ 2,000 _____

E-blast = \$ 1,000 _____

Attendee Tote Bag Insert \$ 500 _____

Total Cost: _____

Payment Method:

Name on Card _____

Card Type: _____

Billing Zip: _____

Card Number: _____

Expiration Date: _____

Signature: _____

Signature of Agreement

This application becomes valid only after being signed by Exhibitor and a confirmation of space has been issued with a receipt of deposit acknowledged by Exhibit Management.

Authorized Signature: _____

Date: _____

Print Name _____

Payment in full must accompany submission of this contract. Remittance must be made in the form of U.S. Dollars. This contract is for exhibit space at The Protein Society Annual Symposium.

Cancellation Policy: It is agreed that (A) if a company cancels its space 90 days or more prior to the opening date of the meeting, deposit shall be retained. Exhibitors shall give written notice of cancellation. (B) If a company cancels its space less than 90 days prior to the opening date of the meeting, the company will be responsible for paying the entire booth cost and Exhibit Management reserves the right to re-sell space.

11