

PRESIDENT'S OFFICE
REGIONAL ADMINISTRATION AND LOCAL GOVERNMENT
FORM TWO OPENING TEST
BIOLOGY MARKING GUIDE

TIME 2:30Hrs

January 2024

1

C	D	D	B	B	D	A	A	C	B
i	ii	iii	Iv	v	vi	vii	viii	ix	x

10 Marks @1mark

2.

E	H	A	G	B
i	Ii	iii	iv	v

5Marks @1mark

3. (a)

- i) All scientific names must be written in Latin language or if is in a different language, the name must be Latinized.
- ii) The name should have two parts; the first part represents the genus and second part represents the specific epithet.
- iii) The generic name is written before the specific epithet
- iv) The generic name must start with a capital letter.
- v) The specific epithet begins with a small letter.
- vi) In published documents such as books, scientific names should be written in italics for example *Homo sapiens*. (5Marks @1mark)

b)

It reduces waste from the environments

It is lead to the formation of new products through recycling example old bottle became a new.

It is employment for some group of people whole collects those waste for recycling

It makes environment clean and attractive

It minimizes the occurrence of diseases like malaria and cholera. (5Marks @1mark)

4. i) Nucleus is important due to the following reasons;-

- It determine the chemical processes take place in the cell
- Control the function of all parts of the cell
- Determine the cell's size, shape and functions;
- Determined the heredity characteristics of a cell

If the nucleus is removed from the plant cell, following will happen

- Cell can't control the function of all parts of the cell

ii) Cell membrane

- It gives cell irregular shape
- It allow certain substances to pass in or out of the cell

If Cell membrane removed from the from the animal cell the following will happens;-

- I will be difficult to allow substance to pass in or out of the cell

iii) Cytoplasm

- It is site for many chemical reactions in the cells

If Cytoplasm is removed from the cell; there was no chemical reaction taking place in the animal cells

iv) Mitochondria

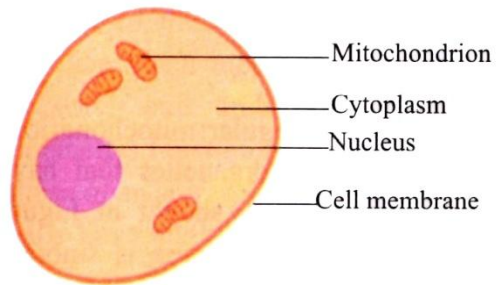
Mitochondrion is responsible for producing energy for the cell.

If mitochondria removed from the cell it means there was no energy produced in the cell. **(5Marks @1mark)**

5.

- i) Monera for example bacteria
- ii) Protocista for example amoeba
- iii) Fungi for example mushroom and yeast
- iv) Plantae for example maize and bean
- vii) Animalia for example human beings, dogs. **(5Marks @1mark)**

6.



10 marks @2.5marks

7. a)

- i) Chew while mouth is closed
 - ii) Chew at a reasonable pace
 - iii) Use proper serving spoons to serve food
 - iv) Do not talk
 - v) Avoid issues that are likely to make other people lose appetite
- (5Marks @1mark)**

b) i) Primary stage or window stage

This stage is accompanied by a flu-like illness. The HIV test is negative and a person looks healthy

ii) Asymptomatic stage

At this stage a person still looks healthy and doesn't show symptoms. Yet the HIV test will show positive results.

iii) Symptomatic stage

This stage is characterized by severe damage to the immune system. At this stage some symptoms of AIDS are visible

iv) Full-blown AIDS

In this stage, one gets various opportunistic infections and diseases. A person becomes very ill and weak

5Marks @1.5marks

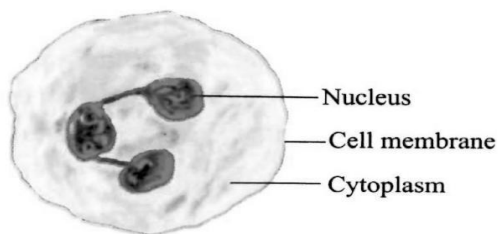
8. (a)

- i) Reduce intake of unhealthy food such as canned foods that contain chemical preservatives.
 - ii) Have regular physical exercise at least 30 minutes
 - iii) Get sufficient sleep in a well-ventilated room
 - iv) When facing problems seek help from parents, counselors and teachers
 - v) Allow time for leisure
 - vi) Take medical drugs only when prescribed by a registered health practitioner
- (5Marks @1mark)**

(b)

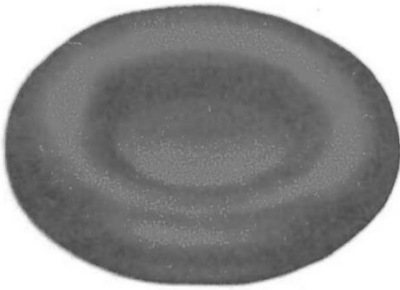
- i) All living things are composed of cells
 - ii) Cells are basic unit of structure and functions of living things
 - iii) All cells are produced from other cells
 - iv) Cells contains inherited information which controls their activities
 - v) All cells are basically the same in chemical compositions.
 - vi) All life process takes place in the cells.
- (5Marks @1mark)**

9. i) White blood cell can change their shapes so as to engulf and destroy harmful microorganisms. Some contain digestive enzymes which destroy the microorganism.

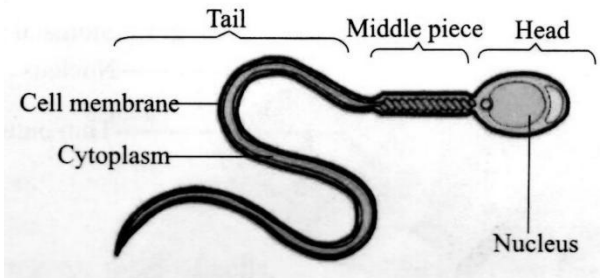


ii) Red blood cell

This provides a large surface area for transporting oxygen from the lungs to various parts of the body. They also contain hemoglobin which carries oxygen

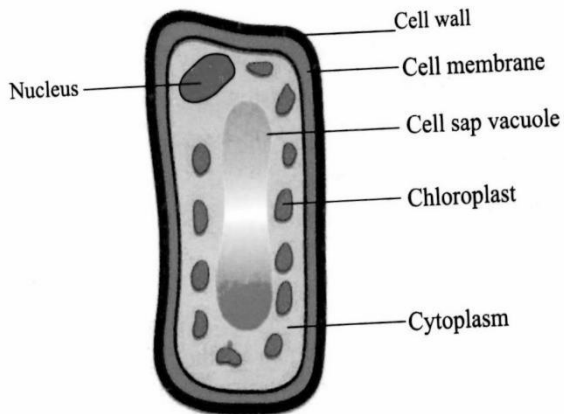


This is the cell which fertilizes the female egg in order for reproduction to take place.



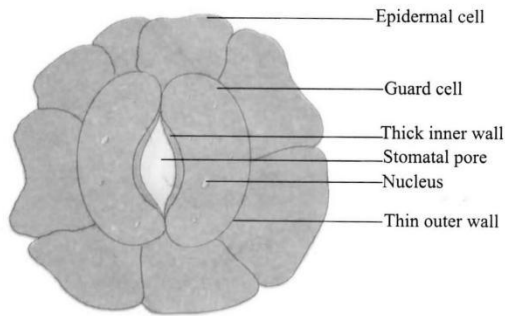
iv) Palisade cells

Palisade cells found in plant leaves contain large amount of chloroplasts. Chloroplasts are the sites for photosynthesis. They contain chlorophyll which traps sunlight energy during photosynthesis.



v) Guard cell

Guard cell is the cell which controls the opening and closing of stomata on the leaf. When the guard cell expands, the stomata open. When they contract, the stomata close.



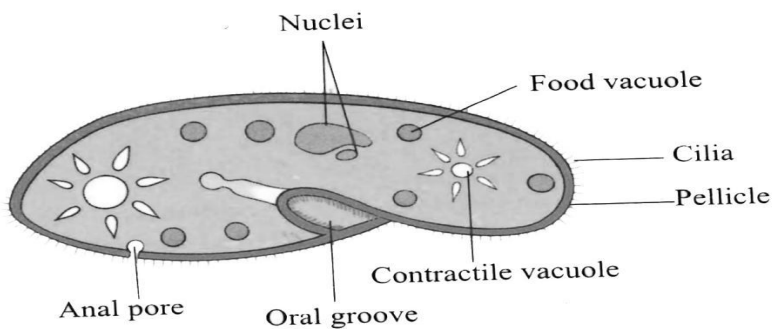
(5Marks @1mark)

10. Introduction (2marks)

Features of paramecium sp (6marks)

- i) They are unicellular and slipper-shaped
- ii) They are heterotrophic
- iii) They live in fresh water
- iv) They body is covered with short hairy structures called cilia
- v) They used cilia to move and to create a feeding current
- vi) Food enters the organism through an opening called the oral groove.

Well labeled diagram of paramecium sp(06marks)



Conclusion (1 mark)

KWA MAHITAJI YA

01. MITIHANI YA KILA MWEZI (MONTHLY TEST) KWA MASOMO YOTE NA VIDATO VYOTE

02. SERIES ZA 0-LEVEL KWA MASOMO YOTE NA VIDATO VYOTE

03. MITIHANI YA KIDATO CHA TANO NA SITA (ADVANCED SERIES) KWA COMBINATION ZOTE

OFA OFA

U.B.N COOPERATION TUNATOA OFA MAALUM YA KUJIUNGA NA GROUP LETU LA “U.B.N COOPERATION” KWA WAKUU WA SHULE NA WATAALUMA KWA TSH 50,000/= KWA KIDATO KIMOJA AMBAPO UTAPATA MITIHANI YA KILA MWEZI (MONTHLY TEST) KWA MASOMO YOTE NDANI YA MIEZI SITA. OFA HII NI KWA KIDATO CHA PILI NA CHA NNE TUU. ITAANZA (MWEZI JANUARI – JUNE) MWISHO WA KUJIUNGA NA OFA HII NI TAREHE

05/01/2024

KWA MAWASILIANO TUCHEKI KWENYE NAMBA

0624 254 757 WHATSAPP TU