



Now, in a version you can own!

LEWIS CARROLL'S DELIGHTFUL FANTASY...

# ALICE IN WONDERLAND

Here, in that delightful world of the Mad Hatter, the Cheshire Cat, and the King and Queen of Hearts, Alice meets all the amusing and satirical characters that millions of people — young and old — have enjoyed.

16 SDN 40843 16mm. sound version,  
about 300 feet. **\$16.89**

16 SLN 40843 16mm. silent version,  
about 300 feet. **\$8.59**

8 SLN 40843 8mm. silent version,  
about 150 feet. **\$4.98**

This month's release in Blackhawk's Railroad Series...

## THE CALIFORNIA ZEPHYR

(see page 12 for full description)

16 SDN 45B19 16mm. sound version,  
about 300 feet. **\$11.95**

8 SDN 45B18 8mm. silent version,  
about 150 feet. **\$2.98**

## get the jump on santa claus!

We have just acquired about 100 excellent used 16mm. sound prints of some six 1-reel Christmas films which we are offering at about half, or less than half, their usual selling price new. The time to buy these excellent used subjects is NOW, while prints are available. Pick your titles and order your prints today!



### SANTA CLAUS PUNCH AND JUDY

(Castle). Santa Claus brings along a Punch and Judy show to entertain the kids at Christmas. Lots of laughs and fun. Limited supply of used prints. 1-reel, 16mm. sound. 16 SDU 40B31 ..... **\$8.95**

### CHRISTMAS TOYSHOP

(Castle). One of the earlier, and one of the best, of the famous Castle Christmas films. The story of Santa Claus and his helpers at his North Pole Toy Shop. Very limited supply of used prints. 1-reel, 16mm. sound. 16 SDU 40B46 ..... **\$9.95**

### CHRISTMAS RHAPSODY

(E.I.F.). One of the very best of all Christmas films — the story of the little Christmas tree. Very limited supply of prints. 1-reel, 16mm. sound. 16 SDU 40B31 ..... **\$12.95**

### THE NIGHT BEFORE CHRISTMAS

(Castle). The familiar poem dramatized with live action and animated sequences. 1-reel, 16mm. sound. 16 SDU 40B37 ..... **\$9.95**

### CHRISTMAS CAROLS

(Castle). Three of the best-loved carols sung by a mixed chorus. Word superimposed over the action at the bottom of the screen. 1-reel, 16mm. sound. 16 SDU 15B183 ..... **\$9.95**

### ALIAS ST. NICK

(Pictorial). A Harmon-Ising Cartoon starring Little Cheezer. The old Tom cat dresses up like Santa in order to fool the mice. And he does fool them all — that is, but Little Cheezer. Jam-packed with fun and action. An outstandingly good cartoon. 1-reel, 16mm. sound. 16 SDU 5B4 ..... **\$8.95**



## GLACIER NATIONAL PARK (Full Color Kodachrome)

We've just made a very, very fortunate purchase of a quantity of excellent used Kodachrome 16mm. sound prints of this recent release in Carl Dedler's "This Land is Our Land." All on the highlights of Glacier National Park in a full color film that would cost you \$86.00 if purchased new. Yet, many of our used prints probably haven't been screened more than a dozen times, and on the screen they look like new. While this stock lasts, get your print for less than half its price new!

16 SDU 25C192 16mm. sound, in full color Kodachrome,  
about 350 feet. **\$39.95**

**BLACKHAWK FILMS INC.** catalog 25a **DAVENPORT, IOWA**  
EFFECTIVE UNTIL NOVEMBER 1, 1952



SDU 10161	PINTO BANDIT — Trailer (10'). James Newill, Dave O'Brien, P. R. C.	\$7.50
SDU 10162	PIRATES ON HORSEBACK—Trailer (10'). Hazelton Cassidy, M. J. Conroy	\$7.50
SDU 10163	PRairie Chickens—Trailer (10'). Jimmy Naggs, Beach Boys, 11, Hal Wood	\$7.50
SDU 10164	PRIDE OF THE TURF—Trailer, (10'). Guy Kirkham, RKO	\$7.50
SDU 10165	SCATTERBOLD SURVIVES A MURDER—Trailer (10'). Guy Kirkham, RKO	\$7.50
SDU 10166	SHADOWS ON THE RANGE — Trailer (10'). Johnny Mack Brown, Mascaron	\$7.50
SDU 10167	SILENT WITNESS—Trailer (10'). Frank Atkinson, Centex Great Masterson	\$7.50
SDU 10168	SMART GUY—Trailer (10'). Bob Villa, Veda Ann Borg, Steve Brown	\$7.50
SDU 10169	SOUTH OF DIXIE — Trailer (10'). Alvin Karpis, David Bruce, Guy Powell	\$7.50
SDU 10170	SPY TRAIN — Trailer (10'). Richard Travis, Catherine Gray, Masterson	\$7.50
SDU 10171	STRANGLER OF THE SWAMP—Trailer (10'). Economy La Plante and Robert Bennett, Pictorial	\$7.50
SDU 10172	TEXAS KID, THE —Trailer (10'). Johnny Mack Brown, Masterson	\$7.50
SDU 10173	THREE ON A TICKET — Trailer (10'). Hugh Beaumont, Cheryl Walker, P. R. C.	\$7.50
SDU 10174	THUNDER RIVER FUND—Trailer (10'). The Range Riders, Mascaron	\$7.50
SDU 10175	TREE FANGS—Trailer (10'). Frank Buck and John Deere, Pictorial	\$7.50
SDU 10176	TRAIL OF VENGEANCE—Trailer (10'). Johnny Mack Brown, Masterson	\$7.50
SDU 10177	WHITE PONGO—Trailer (10'). Richard Fraser and Max White, Pictorial	\$7.50
SDU 10178	WINDS OVER THE PACIFIC—Trailer (10'). Inez Cooper, Edward Norris, Robert Armstrong, Masterson	\$7.50

### Religious

SDU 10182	FAITH TRIUMPHANT (2 reels). Religious Film, Story of Paul's arrest, his trial and imprisonment in Caesarea as told in Acts 21:27-30	\$15.00
SDU 10183	PERFECT SACRIFICE (12 reels). in Color, Queen's Work An instructional film of the Roman Catholic Mass with the prayers in English, bridged and subtitled with the original Latin	\$10.00
SDU 10184	PIUS XI, PAPA OF PEACE (1 reel). Quaintest, His life and good work	\$7.50

### Films in Color

SDU 10185	BENEATH CORAL SEAS (1 reel, in Color). Pict. The unusual and beautiful life in the waters around a coral reef	\$25.00
SDU 10186	BEAUTIFUL BERMUDA (1 reel, in Color). Pict.	\$25.00
SDU 10187	BIG THINGS HOLLING (5 reels, in Kodachrome). Quality. Tells the operational story of today's railroads — the various kinds of work, workings of railroad post office car, new kind of car operates, many types of accommodations available for overnight travel, also many things you might not know	\$25.00
SDU 10188	BLEU WARRIORS OF THE PACIFIC (1 reel in Kodachrome). Healy-Land	\$75.00
SDU 10189	CHICAGO (1 reel, in Kodachrome). Official	\$10.00
SDU 10190	COMBAT AMERICA (1, in Kodachrome). Clark Gable to comment on as well as appearing in this dramatization of the Civil War and the Battle of Gettysburg	\$10.00
SDU 10191	DISTRICT OF COLUMBIA (1 reel in Kodachrome). Official	\$10.00
SDU 10192	GRAND CANYON IN NORTHERN ARIZONA, THE (2 reels, in Kodachrome). Santa Fe	\$15.00
SDU 10193	GREEN HARVEST (3 reels, in Color). Wilding. Shows relationship between wild life and forests, how forest fires are spotted and prevented, how forests and alpine forest trees, how scientific harvesting of trees is practiced, and how handling of logs and lumber has been mechanized	\$35.00
SDU 10194	HOLIDAY IN THE CARIBBEAN (1 reel, in Kodachrome). Healy Land	\$25.00
SDU 10195	INFANT CARE (1 reel, in Kodachrome). Walt Disney, Simple story, any mother should be during pre-natal period and infancy to know how to care for her baby	\$24.00
SDU 10196	LIVE AT HOME (1 reel, in Color). U. S. Department of Agriculture. Encourages farmers to grow more food at home with a garden, an orchard, a flock of chickens, a lot of pigs, and a couple of cows	\$15.00
SDU 10197	MAIRE (1 reel, in Kodachrome). Official	\$35.00
SDU 10198	MARSHMALLOWETS (1 reel, in Kodachrome). Official	\$35.00
SDU 10199	NEW HAMPSHIRE (1 reel, in Kodachrome). Official	\$35.00
SDU 10200	REMEMBER THESE FACES (2 reels, in Color). USN. Shows how medical facilities follow close on the heels of the advancing front line in an inland invasion, and how the wounded are cared for	\$25.00
SDU 10201	SINBAD THE SAILOR (1 reel, in Cinecolor). Fairy Tale Cinema, Mascaron	\$14.00
SDU 10202	SUGAR BOWL GARY—1952 (1 reel, in Color). Rex Films. The 1952 version that precedes the name, and very full coverage in the book "SUGAR BOWL" by the University of Georgia and University of North Carolina	\$35.00
SDU 10203	TENUTEPEC (1 reel, in color). Office of Inter-American Affairs, tourist case of village life and traditions; scenes of wedding party and fruit festival	\$15.00
SDU 10204	A TOWN IN OLD MEXICO (1 reel, in color). Office of Inter-American Affairs, Village of Pueblo, Oaxaca, and Fortified de las Flores, 17th Century architecture. Rivers, etc.	\$15.00

SDU 10205	VERMONT (1 reel, in Kodachrome). Official	\$35.00
SDU 10206	WASHINGTON, D. C. (1 reel, in Kodachrome). Official	\$10.00
SDU 10207	WATER-FRIEND OR ENEMY (1 reel, in Color). Disney. Tells a series of deliciously simple health films made for use in rural South America. The films about the right and wrong ways for a well, about the necessity for boiling water, for having clean water	\$10.00
SDU 10208	WELCOME TO SOUTHERN CALIFORNIA (2 reels, in Kodachrome). Santa Fe. A beautifully pleasant sight-seeing trip around Southern California. We see its colorful towns and cities, its parks, its national institutions, its sports, its industries	\$25.00
SDU 10209	YOUNG (1 reel, in Kodachrome). "This Land of Ours." Official	\$35.00
SDU 10210	YOUNG SHIP IN ACTION (1 reel, in Color). USN. Showing a light aircraft (the ship) along as it proceeds through its Panama Canal to the Pacific, contact with the enemy, and a night engagement with the Japanese fleet	\$25.00

### Musicals

SDU 10211	ALPINE RENDEZVOUS (1 reel). Ray Halle and The Businessmen, Calumetwood, Pictorial	\$7.50
SDU 10212	ASCENDING VARIETIES (1 reel), with Earl and Donnie, Lillian Roth, Gailina Pictorial	\$5.00
SDU 10213	BEAUTIFUL DREAMER (2 reels), with Ken Darby and the Kings of Adam	\$10.00
SDU 10214	BIG BIT OF BLARNEY A (1 reel), with The Pine Strangers, Castle	\$5.00
SDU 10215	BROADWAY DANCE PARADE (1 reel). Hoffman	\$7.50
SDU 10216	BROADWAY HIT SONGS (1 reel), with Celine Maitis and Ray Charles's Orchestra, Pictorial	\$7.50
SDU 10217	CAFÉ RENDEZVOUS (1 reel) with The Kibitzers, Jack Arthur, and Arnold, Pictorial	\$7.50
SDU 10218	CALL OF THE WEST (1 reel). Margie Darby, Saade Carter, Official	\$7.50
SDU 10219	CARNIVAL SHOW (1 reel), with Jan Porter, The Cotton Club, Tramp Band, and The Three De Lovelies, Pictorial	\$7.50
SDU 10220	COMEDY AND SONG (1 reel), with Rudy Vallee and Jane Bernette, Official	\$7.50
SDU 10221	COWBOY SONGS (1 reel). Carole Robinson, Official	\$7.50
SDU 10222	CUBAN RHYTHMS (1 reel), with Jari Sullivan and Lulu Melton, Official	\$7.50
SDU 10223	DANCE MELODIES (1 reel). Vincent Lopez, Carroll Hood, and Parker, Castle	\$7.50
SDU 10224	DEVILED HAM (1 reel), with Guy Van, Pictorial	\$5.75
SDU 10225	DENTAL FOLLIES (1 reel). Patsy Lee, Altona Bank, Saade	\$5.50
SDU 10226	DRUG STORE FOLLIES (1 reel), with Carole Marsh and Tex Jim Lewis, Lion's Picture	\$7.50
SDU 10227	GUY VAN'S SINGING SHOP (1 reel), with Guy Van, Official	\$5.50
SDU 10228	HAPPY PRIMA AND HIS BAND (1 reel). Official	\$5.50
SDU 10229	HARMONY HIGHWAY (2 reels). Al Douglas and His Orchestra, Universal	\$14.00
SDU 10230	HOT DATE (1 reel), with Count Basie Orchestra and Delta Rhythm Band, Official	\$5.00
SDU 10231	JOLLY JINGLES (1 reel) with the Jolly Jesters and Tommy Marton and Orchestra, Official	\$5.00
SDU 10232	JUBILEE JUBILEE (1 reel), with The Collegiate, Kay Lorraine, Castle	\$5.00
SDU 10233	KERNELS OF KORN (1 reel), with Harry Raab and His Maids, Castle	\$7.50
SDU 10234	NIGHT AT THE THEATRE (1 reel). The Mills Brothers, Official	\$7.50
SDU 10235	LEBON IN PROPOSING A (1 reel). Organette containing Little Girl, One More Chance, Sweet and Lovely, Official	\$4.00
SDU 10236	LOUIS PRIMA AND HIS BAND (1 reel). Castle	\$7.50
SDU 10237	LOVE SONGS (1 reel), with Bob Kennedy and Harry Cost, Official	\$5.00
SDU 10238	MELROY LANE (1 reel), with Bob Carter and his orchestra, The Diamond	\$7.50
SDU 10239	MERRILY WE SING (1 reel). The Gardeners, Castle	\$7.50
SDU 10240	MIDNIGHT MELODIE (2 reels) with Matt Malneck and his Orchestra, United World	\$15.00
SDU 10241	MOONLIGHT & BELLODIES (1 reel) with Buddy Clark and Mary Hinks, Official	\$7.50
SDU 10242	MUSICAL FOR MOONLIGHT (1 reel), with David Brooks and Line Hemy, Official	\$7.50
SDU 10243	MUSIC PAPERS (1 reel), with Al Train, Chris Crowl, and Milt Grimes, Official	\$7.50
SDU 10244	MUSICAL MEDLEY (1 reel), with Mitchell Ayres and his Orchestra, Official	\$5.00
SDU 10245	MUSICAL VARIETIES No. 3 (1 reel). Heumann's Law, Johnny Davis, Eddie LeBaron's Orchestra, Pictorial	\$7.50
SDU 10246	MY OLD KENTUCKY HOME (2 reels). The Kings Men Adorals \$10.00	
SDU 10247	MY OLD KENTUCKY HOME (2 reels). A gay general and musical interpretation of Foster's well-known song	\$15.00
SDU 10248	A NIGHT AT THE BILTMORE BOWL (2 reels) with Benjy Grubb and Jimmy Pierce and his Orchestra, Actor	\$10.00
SDU 10249	A NIGHT AT THE TROC. A (1 reel), with Peggy Faye, Mabel Gardner, Ileana Pittors	\$7.50
SDU 10250	A NIGHT AT THE MUSIC HALL (1 reel), with Finky Tomlin, Official	\$7.50
SDU 10251	A NIGHT AT THE TROC. B (1 reel), with Ken Darby and The Kings Men, Adorals	\$10.00
SDU 10252	OLD RUSSIAN JAMBORÉE (1 reel). Gertrude Nissen, Castle	\$7.50
SDU 10253	OLD TIME TUNES (1 reel). Fay Lode Kay, Benny Loman, Official	\$7.50
SDU 10254	POT SWEET (1 reel), with The Kings Men, Official	\$7.50
SDU 10255	REAGIN LITM AND RHYTHM (1 reel). Milt Daniels, Lucky Millerband, The Quintettes, Pictorial	\$5.00
SDU 10256	RUMBA RHYTHM (1 reel), with Guy Van, Official	\$7.50
SDU 10257	RUMBA SERENADE (1 reel), with Kate Rodige's Orchestra and the Mills Rhythm Orchestra, Official	\$7.50
SDU 10258	RHYTHM IN A NIGHT COURT (1 reel). Al Berns, Harry Rene, Stella Mann, & Co. Sid Martin, Pictorial	\$7.50
SDU 10259	RHYTHM IN A NIGHT COURT (1 reel). Stella Mann's Orchestra, Nip Lilli, Castle	\$7.50
SDU 10260	ROMANTIC PARADE (1 reel). with The Four Pats, Del Collins Orchestra, Saade	\$7.50
SDU 10261	ROMANTIC PARADE (1 reel), with Stan Kayser's Orchestra and Lucille Bremer, Official	\$7.50

- 80U 158111 RURAL RHYTHM (1 reel, Frank Nease and Ma Reelin', Taster, Castle 57.95
- 80U 158215 SALT SHAKERS (1 reel, with J. C. Flippen, Joe Davis, and Vera Hall, Pictorial 57.95
- 80U 158115 SENTIMENTAL JOURNEYS (1 reel, with Glen Gray's Orchestra and Sonny Dushman, Official 57.95
- 80U 158129 KING AND BE HAPPY (1 reel, with The Goodwins, Castle 55.95
- 80U 158217 KING A SOBRIER OF SPAIN (2 reels, Introduction with Lew White, Master A-1 56.51
- 80U 158123 SINGING HARDER THE (1 reel, with The Goodwins, Castle 53.95
- 80U 158124 SINGING STARS (1 reel, with Jerry Wayne, Jerry Cooper, and Lou Gray, Castle 57.95
- 80U 158130 SNOWTIME JUBILEE (1 reel) Glenn Glenn, Castle 57.95
- 80U 158222 SONGS OF THE IRISH (1 reel, Lennie Rusk, Maxwell Birk, Gus Van, Castle 57.95
- 80U 158143 SONGS OF LOVE (1 reel, with The Nancy March, Don Costello's Orchestra, Castle 55.50
- 80U 158194 SONGS OF ROMANCE (1 reel, with Harry Gold, Betty Henderson and Rex Brown, Castle 57.95
- 80U 158198 SONGS OF THE WEST (1 reel, with Carson Robison and his Orchestra, Castle 57.95
- 80U 158224 SONGS TO REMEMBER (1 reel, Men and Maids of Melody, Triumph Studios, Castle 57.95
- 80U 158184 SOUTH OF THE BORDER SONGS (1 reel, with Rita Ria, The Velvets, Castle 57.95
- 80U 158146 STEPHEN FOSTER MELODIES (1 reel, Official 52.50
- 80U 158117 SWEET AND LOVELY (1 reel, Harry Earl and Bob Kennedy, Official 55.95
- 80U 158189 SWING AND SWING (1 reel, Martha Titan, Castle 57.95
- 80U 158119 SYNCRAPED KING (1 reel, with Victor Young and his Orchestra, Eminent Studios, Castle 58.95
- 80U 171030 TALENT ACQUISITION (1 reel, with Frank Baalag, The Sports Men, and Paul Robinson, Pictorial 55.50
- 80U 158168 TIE ON THEIR HANDS (1 reel, Charles Castle, Lew Hearn, Studio 57.95
- 80U 158179 TONY PASTOR AND HIS BAND (1 reel), Castle 57.95
- 80U 158134 TROPICAL TOPICS (1 reel, The Rimes, Besta Orkes, The Rimes, Studio 57.95
- 80U 158234 UNDER A GYPSY MOON (1 reel, with J. Harriet Morfar, Geneva, Albert, violinet, The Song Stylists, Pictorial 57.95
- 80U 158111 VARIETY SHOW (1 reel, with Redy Valley and the Four Boys, Max, Official 57.95
- 80U 158123 WESTERN SONGS (1 reel, Gene Autry, Hollywood Film 55.95
- 80U 158163 WESTERN SONGS (1 reel, with Jerry Carter, Spauld Colley and his Orchestra, Official 57.95

### March of Time

- 80U 580115 AMERICANS ALL (2 reels, March of Time 513.95
- 80U 580116 BRITAIN AND HER EMPIRE (2 reels) March of Time 518.95
- 80U 580117 CZECHOSLOVAKIA (2 reels) March of Time 518.95
- 80U 580118 FASCISM IN RUSSIA (2 reels) March of Time 518.95
- 80U 580119 FIGHT FOR BETTER SCHOOLS (2 reels) March of Time 518.95
- 80U 580120 FRENCH CAMPAIGN (2 reels) March of Time 518.95
- 80U 580121 GREECE (2 reels) March of Time 518.95
- 80U 580122 THE HAWK (2 reels) March of Time 518.95
- 80U 580123 LIFE'S SUMMER CAMPS (2 reels) March of Time 518.95
- 80U 580124 NEW FRANCE (2 reels) March of Time 518.95
- 80U 580125 NOBODY'S CHILDREN (2 reels) March of Time 518.95
- 80U 580126 THE FRENCH REPUBLIC (2 reels) March of Time 518.95
- 80U 580127 PORTUGAL (1 reel) March of Time 518.95
- 80U 580128 REPUBLIC OF ITALY (2 reels) March of Time 518.95
- 80U 580129 TOMORROW'S MEXICO (2 reels) March of Time 518.95
- 80U 580130 TRANSFORMATION IN THE U. S. (2 reels) March of Time 518.95

### Sports

- 80U 38027 AQUA FROLIC (1 reel), Castle 57.95
- 80U 380123 ARCTIC THRILLS (1 reel), Castle. A polar bear hunt 59.95
- 80U 38033 BASKETBALL (7 reels, Fiton Lee Six great basketball) season, Dave McMillan, "Phog" Allen, Clara Lee, Dr. W. C. Carrigan, George Krasner and other players explain their methods and a team demonstrates the various points 529.95
- 80U 380148 BIG FISH (1 reel), Castle 57.95
- 80U 38032 BIG LEAGUERS (1 reel), Pictorial 55.50
- 80U 38027 BLUE BLOODS (1 reel), Official, Thorsbred horses 57.95
- 80U 38036 BLUE GRASS (1 reel), Pictorial 57.95
- 80U 380149 CHANNEL HARBOR AND STRIPERS (1 reel), Hawley-Lord/Strling 55.95
- 80U 38034 PAWLEDALS ON ICE (1 reel), Pictorial 57.95
- 80U 38031 FLYING FEATHERS (1 reel), Pictorial 54.95
- 80U 380195 FUNDAMENTALS OF BASKETBALL WITH COACH H. C. CARLSON (1 reel), Official 44.95
- 80U 380196 FUNDAMENTALS OF BASKETBALL WITH COACH JOHN HUNN (1 reel), Official 44.95
- 80U 380197 FUNDAMENTALS OF BASKETBALL WITH COACH GEORGE KEDGAN (1 reel), Official 44.95
- 80U 380198 FUNDAMENTALS OF BASKETBALL WITH COACH DAVE McMILLAN (1 reel), Official 44.95
- 80U 380199 FUNDAMENTALS OF BASKETBALL WITH COACH FORK ALLEN (1 reel), Official 44.95
- 80U 380194 FUNDAMENTALS OF BASKETBALL WITH COACH CHUCK TAYLOR (1 reel), Official 44.95
- 80U 380195 FUNDAMENTALS OF BASKETBALL WITH COACH CLARE DEE (1 reel), Official 44.95
- 80U 380192 DOLLY MANIAC (1 reel), Castle 57.95
- 80U 380193 HARNESS CHAMPIONS (1 reel), Castle 57.95
- 80U 380129 HE NO HOPPED (1 reel), Columbia 57.95
- 80U 38035 ICE CREAM (1 reel), Official 57.95
- 80U 380140 ICE CARNIVAL (1 reel), Castle 57.95
- 80U 380191 IN THE SWIM (1 reel), Pictorial 57.95
- 80U 380196 KENNEL KINGS (1 reel), Pictorial 57.95
- 80U 380195 MONARHS OF THE RING, REEL I (1 reel), Official 57.95
- 80U 380197 MONARHS OF THE RING, REEL II (1 reel), Official 57.95
- 80U 380198 MONARHS OF THE RING, REEL III (1 reel), Official 57.95

- 80U 38071 PHEASANT FEVER (1 reel), Hawley-Lord 57.95
- 80U 38072 PINEHURST (1 reel), Pictorial 57.95
- 80U 38073 PUTTING ON THE OGS (1 reel), RKO/Library 57.95
- 80U 38074 RICE AND CORN (1 reel), Official 57.95
- 80U 38075 SAGE BISCUIT (2 reels), Gemalt, The story of the famous hero 57.95
- 80U 38076 SERI IN THE VALLEY OF THE SAINTS (1 reel), NFB 57.95
- 80U 38077 SKYWARD ON SKIES (2 reels), Shelley 57.95
- 80U 38079 SMOOTH APPROACH (1 reel), Pictorial 57.95
- 80U 38080 SWIM SPEED (1 reel), Castle 57.95
- 80U 38081 TILLS AND BLESSINGS (1 reel), Official 57.95
- 80U 38082 TILLER PARK AND STRIKES (1 reel), Official 57.95
- 80U 38083 THIS WEEK IN SPORTS, No. 12 (1 reel), Film Studio Chicago 57.95
- 80U 38084 THRILL FIVED (1 reel), Howley-Lord 57.95
- 80U 38086 THRILLS ON WHEELS (1 reel), Castle 57.95
- 80U 38087 THRILLS OF THE SURF (1 reel), EMI 57.95
- 80U 38088 UNDERDOWN (1 reel), Pictorial 57.95
- 80U 38089 UNDERWATER (1 reel), Castle 57.95
- 80U 38090 WHITE MOUNTAIN (1 reel), Pictorial 57.95
- 80U 38091 WORLD SERIES OF 1942 (1 reel), Official 57.95

### Cartoons

- 80U 5818 THE BIG BROTHERHOOD (1 reel), Puppington, Pictorial 57.95
- 80U 5819 BUBB BEETLE (1 reel), Tortonson, Castle 57.95
- 80U 5820 CHINESE LANTERNS (1 reel), Merrystone, Official 57.95
- 80U 5821 CLOSE BRAVE A (1 reel), Famous, All Falls, Famous, Castle 57.95
- 80U 5822 DAVE JONES' LUCKY (1 reel), Wally Wagner, Film Studio 57.95
- 80U 5823 FAIR TROUS (1 reel), Walter Lantz, Castle 57.95
- 80U 5824 THE FARMER AND HIS CAT (1 reel), Annap's Film, Studio 57.95
- 80U 5825 FARMYARD WHOOPUS (1 reel), Tortonson, Castle 57.95
- 80U 5826 FLY AND FLY (1 reel), Famous, All Falls, Famous, Castle 57.95
- 80U 5827 FOOTBALL (2 REELS) (1 reel), Farmer All Falls, Castle 57.95
- 80U 5828 FRANK UP THE (1 reel), Gandy Gasser, Castle 57.95
- 80U 5829 GOOD SCOUT, A (1 reel), Willie Wheeler, Film Studio 57.95
- 80U 5830 GOURDIE P. MOUTH (1 reel), Andy Panda, Castle 57.95
- 80U 5831 GOOSE THAT LAID THE GOLDEN EGGS, THE (1 reel), Merrystone 57.95
- 80U 5832 HOME TALENT (1 reel), Annap's Film, Studio 57.95
- 80U 5833 HONEYLAND (1 reel), Pictorial 57.95
- 80U 5834 HOT SANGS (1 reel), Tortonson, Castle 57.95
- 80U 5835 HUNTING IN 1938 (1 reel), Annap's Film, Studio 57.95
- 80U 5836 INAZLIN' THE SULTAN (1 reel), Wally Wagner, Film Studio 57.95
- 80U 5837 JAIL BIRD (1 reel), Annap's Film, Studio 57.95
- 80U 5838 LINDY'S CAT (1 reel), Annap's Film, Studio 57.95
- 80U 5839 LOST ON THE RANGE (1 reel), Puppington, Pictorial 57.95
- 80U 5840 MICKEY AND THE DIANT (1 reel), Mickey Mouse, Hollywood Film 57.95
- 80U 5841 MICKEY AND THE LILIPUTIANS (1 reel), Mickey Mouse, Hollywood Film 57.95
- 80U 5842 MICKEY PLAYS SANTA CLAUS (1935), Mickey Mouse, Hollywood Film 57.95
- 80U 5843 MICKEY SAVES THE AIR MAIL (1 reel), Mickey Mouse, Hollywood Film 57.95
- 80U 5844 MOUTH AND THE SPIDER, THE (1 reel), Tortonson, Castle 57.95
- 80U 5845 MOUSE MEETS LION (1 reel), Official 57.95
- 80U 5846 ON THE LINKS (1 reel), Annap's Film, Studio 57.95
- 80U 5847 OVER THE PLATE (1 reel), Annap's Film, Studio 57.95
- 80U 5848 PARROTVILLE OLD FOLKS (1 reel), Official 57.95
- 80U 5849 PARROTVILLE POST OFFICE (1 reel), Official 57.95
- 80U 5850 PEG LEG PETE (1 reel), Annap's Film, Studio 57.95
- 80U 5851 PHANTOM ROCKET, THE (1 reel), Tom and Jerry, Film Studio 57.95
- 80U 5852 PUDDLE FRANKS (1 reel), Film the Fine, No-A-T 57.95
- 80U 5853 PUDDY PICKS A BONE (1 reel), Puddy the Pup, Castle 57.95
- 80U 5854 PUPPY PICKS (1 reel), Pictorial 57.95
- 80U 5855 RAB DOG (1 reel), Merrystone, Official 57.95
- 80U 5856 SCREWBALL, THE (1 reel), Woody Weddemaker, Castle 57.95
- 80U 5857 SCRUB ME MAMA WITH A BOOGIE BEE (1 reel), Lantz, Castle 57.95
- 80U 5858 SOUTH SEA SWEETHEARTS (1 reel), Puppington, Pictorial 57.95
- 80U 5859 TOYLAND BROADCAST, A (1 reel), Pictorial 57.95
- 80U 5860 TRAILER LIFE (1 reel), Farmer All Falls, Castle 57.95
- 80U 5861 TWO LITTLE PUPS (1 reel), Pictorial 57.95
- 80U 5862 THE TURTLE SWIMS (1 reel), Pictorial 57.95
- 80U 5863 WHACK OF THE HESPERUS (1 reel), Mighty Mouse, Castle 57.95

### Comedies

of  
Cinematographic  
Arts  
Library

## Westerns

SDU 30048	AMBUUSH TRAIL (1 reel), Bob Steele, Pictorial.	\$9.95
SDU 30047	BLAZING GUNS (1 reel), with Kirby Gray, Castle.	\$8.95
SDU 30046	CODE OF COURAGE (1 reel), with Johnny Mack Brown, Castle.	\$8.95
SDU 30045	DOWNY BRIDGE (1 reel), with Bud Cameron, Castle.	\$8.95
SDU 30044	GHOST OF HIDDEN VALLEY (1 reel), with Buster Crabbe, Al St. John, Official.	\$9.95
SDU 30035	MYSTERY OF THE INDIAN UPRISING (1 reel) with Gene Autry, Hollywood Film.	\$9.95
SDU 3107	RANHIDE BUCKAROO (2 reels), with Dave O'Brien, Jimmie, Library.	\$19.95
SDU 30042	TEXAS TRAIL TREACHERY (1 reel), with Bud Cameron, Castle.	\$9.95
SDU 30041	WESTERN FEUD (1 reel), with Johnny Mack Brown, Castle.	\$9.95
SDU 11014	WESTERN WHOOPEE (1 reel), with Tex Williams, Castle.	\$9.95

## Children's Films

SDU 40015	ANIMAL LAND (1 reel), Shorties. A blending of stop-motion photography and cartoon animation tells the story of the day the dink broke and a terrible flood reared through Animal Land.	\$9.95
SDU 40014	AKEMBERSHIP (1 reel), Studio of America, Program rec and core of as demonstrated by an expert.	\$7.95
SDU 40013	CARNIVAL (1 reel), Sterling.	\$8.95
SDU 40012	CHIMP, THE COWBOY (1 reel), Castle.	\$9.00
SDU 40011	CHIMP AND THE FARM (1 reel), Castle.	\$8.85
SDU 40010	CHIMP'S JAMBOREE, THE (1 reel), Castle.	\$9.00
SDU 40009	CURIOUS CUR, THE (1 reel), Sterling. Story of a boy whose curiosity gets him into trouble with a mouse and a pet, plus upsetting a beehive and falling into the river.	\$9.95
SDU 40008	IVANHOE (1 reel), An exciting tale told in sketches.	\$5.95
SDU 40007	JOHNNY AT THE FAIR (1 reel), Sterling.	\$6.00
SDU 40006	LET'S GO TO THE ZOO (1 reel), No-Act.	\$7.95
SDU 40005	MAKING A PACK BASKET (1 reel), Boy Scouts of America.	\$8.95
SDU 40004	PIRRO AND THE BLACKBOARD (1 reel), Official.	\$7.95
SDU 40003	PIRRO AND THE LAMP (1 reel), Official.	\$7.95
SDU 40002	PIRRO AND THE WALNET (1 reel), Official.	\$7.95
SDU 40001	PIRRO AND THE SCALE (1 reel), Official.	\$7.95
SDU 40000	PIRRO AND THE THERMOMETER (1 reel), Official.	\$7.95
SDU 40000	PIRRO AND THE VACUUM CLEANER (1 reel), Official.	\$7.95
SDU 2101	PUSH IN BOOTS (2 reels), Columbia. Talented child actors, Huggins and Johnson appear in this musical fantasy by Nathaniel Shilkret and Robert A. Simon.	\$49.95
SDU 30013	SANDY STEPS OUT (1 reel), Sterling.	\$9.95
SDU 30012	SEEKING THE CAT (1 reel), Sterling. A charming story of the hunt of Fluffy, the Cat.	\$9.95
SDU 30011	SNOW-WHITE AND ROSE-RED (1 reel), Fairy Tale, Sterling.	\$9.95
SDU 30010	STRAY LAMB, THE (1 reel), Official.	\$9.95
SDU 30009	THREE LITTLE BRUINS IN A CANE (1 reel), Castle.	\$9.95
SDU 30008	THREE LITTLE BRUINS IN THE WOODS (1 reel), Castle.	\$9.95
SDU 30007	ZOO'S WND (1 reel), Official.	\$9.95

## Animals

SDU 12015	BIOGRAPHY OF A FISH, THE (1 reel), The story of the mako shark from birth and the unusual life he leads as father and part-time mother. Sterling.	\$9.95
SDU 30043	CHINOOKS CHILDREN (1 reel), Pictorial.	\$7.95
SDU 30042	CLOYE BEAUTY'S ANIMAL THRILLS (1 reel), Castle.	\$9.95
SDU 30041	DIANA IN AFRICA (1 reel), Haver-Land.	\$9.95
SDU 30040	GIANTS OF THE SEA (1 reel), Official.	\$9.95
SDU 30039	KILLERS OF THE CHAPARRAL (2 reels), Actor. Wild life of the Southwest.	\$19.95
SDU 30038	KNOWLEDGE OF THE INSECT WORLD (1 reel), with Pictorial.	\$9.95
SDU 30037	KINGS OF THE ARCTIC (1 reel), Pictorial.	\$9.95
SDU 31003	OREGON CAMERA HUNT (1 reel), B'nai. Animal life in Oregon.	\$9.95
SDU 30021	WING, CLAW AND FANG (1 reel), Castle.	\$9.95

## Travels

SDU 21026	AFRICAN PIGNYTHRELLS (1 reel), Castle.	\$9.00
SDU 21027	AMERICAN HIGHSPOTS (1 reel), Castle.	\$9.94
SDU 21028	ARIZONA (1 reel), Official.	\$9.91
SDU 21029	BANFF AND LAKE LOUISE (1 reel), Castle.	\$9.90
SDU 21030	BURMA IN AFRICA (1 reel), Haver-Land.	\$9.95
SDU 21031	CANADA'S HIGHSPOTS (1 reel), Castle.	\$9.99
SDU 21032	CARIBBEAN HOLIDAY (1 reel), Castle.	\$9.90
SDU 21033	CITIES OF NORTH AFRICA (1 reel), No-Act.	\$9.90
SDU 21034	CORCY ISLAND (1 reel), Castle.	\$9.90
SDU 21035	CONNECTICUT (1 reel), Official.	\$9.90
SDU 21036	DISTRICT OF COLUMBIA (1 reel), Official.	\$9.90
SDU 21037	DUTCHMAN'S PARADISE (1 reel), Bray, Java.	\$9.95
SDU 21038	HAWAII (1 reel), Official.	\$9.95
SDU 21039	HAWAII (1 reel), Official.	\$9.95
SDU 21040	HOME OF THE SHEIK (1 reel), Bray, Algiers.	\$9.95
SDU 21041	ICELAND ON THE PRASIE (2 reels), NFB.	\$9.95
SDU 21042	INDIANA (1 reel), Official.	\$9.95
SDU 21043	MAINE (1 reel), Official.	\$9.95
SDU 21044	MASSACHUSETTS (1 reel), Official.	\$9.95
SDU 21045	MEXICO (1 reel), Castle.	\$9.95
SDU 21046	MODERN ROME (1 reel), Castle.	\$9.95
SDU 21047	MONTANA (1 reel), Official.	\$9.90
SDU 21048	NEW ENGLAND HOLIDAY (1 reel), Castle.	\$9.90
SDU 21049	PANAMA (1 reel), Official.	\$9.90
SDU 21050	RAFFLES IN RUBBER (Singapore) (1 reel), Pat.	\$7.95
SDU 21051	RHODE ISLAND (1 reel), Official.	\$9.95
SDU 21052	ROME, ETERNAL CITY (1 reel), Castle.	\$9.95
SDU 21053	SHANGHAI (1 reel), Castle.	\$4.98

SDU 23027	STREETS OF CAIRO (1 reel), Bray.	\$9.90
SDU 23028	THROUGH THE PYRENEES TO LOURDES (1 reel), No-Act.	\$9.90
SDU 23029	TRAMONT (1 reel), Official.	\$8.90
SDU 23030	WASHINGTON (1 reel), Castle.	\$8.95
SDU 23031	WILDMAN'S LAND (1 reel), Bray, Barons.	\$9.95
SDU 23040	WYOMING (1 reel), Official.	\$9.95

## Miscellaneous

SDU 20047	AMERICAN LESION—NEW YORK, 1937 (1 reel), Castle.	\$3.90
SDU 20046	AUGUSTUS TAPESTRIES (1 reel), Sterling. The story of a modern tapestry designed by Joan Luria.	\$14.00
SDU 20045	BACK TO NORMAL (2 reels), B.I.S. Today's skilful making and fitting of artificial limbs — particularly in the rehabilitation of war veterans.	\$1.90
SDU 45015	BIRTH OF A VOLCANO (1 reel), Sterling. The development of Paracutin in Mexico.	\$9.95
SDU 20044	CARE OF THE MISSING TELEPHONE (2 reels), American Telephone and Telegraph.	\$9.95
SDU 42008	DEMOCRACY AT WORK (1 reel), Film rec. Contains: Roosevelt inaugurated for third time; Wendell L. Willkie visits Britain; Lord Halifax talks to U.S. as Ambassador; Lord-Lane Bill drafted; U.S. builds up armaments.	\$3.90
SDU 45014	GAY NINETIES LIVE AGAIN (1 reel), Castle.	\$9.95
SDU 43057	HIGHLIGHTS OF THE UNITED NATIONS YEAR—1947-1948 (1 reel), United Nations Film Board.	\$4.99
SDU 40008	HOW TO WIN (1 reel), U.S.N. Operations with ability of the Landing Vehicle, Tracked.	\$3.90
SDU 40010	LABOR FRONT '32 (1 reel), United Artists-NFB. Manpower mobilization throughout the world during World War I.	\$5.95
SDU 61005	LIFE LINE (2 reels), U.S.N. Front-line work in Pacific showing evacuation of wounded and life-saving.	\$7.95
SDU 62003	MAINTAIN REPORT, THE (1 reel), Castle.	\$9.95
SDU 7000	NEW VOICE OF THE U.S. (1 reel), American Telephone and Telegraph. New voice heard over long distance.	\$9.95
SDU 40040	SCOUTMASTER, THE (1 reel), Pat. A tribute to Scout leaders in New York. Good news.	\$7.95
SDU 40007	THE SEVEN ABANDONED (1 reel), B.I.S. The women of the Marine Corps' lives—how they served in rural garb during the fighting war.	\$2.90
SDU 40004	STORY OF THE U. S. COAST GUARD, THE—HISTORY, THE (1 reel), U.S. Coast Guard.	\$9.95
SDU 30075	TOY THAT GREW UP, THE (1 reel), AF. The fascinating story of how the motion picture was developed.	\$19.95
SDU 62000	UNIVERSAL INTERNATIONAL NEWS REEL No. 100 (1 reel), Universal. Contains: Football—Manchester vs. Northampton; Columbus vs. Penna. The Frank Story (his never to be re-election as President).	\$3.90
SDU 62001	UNIVERSAL INTERNATIONAL NEWS REEL No. 100 (1 reel), Universal. Contains: Berlin Airlift; Communist Strikes in France; Airlines Closing in Southern U.S.; Football—Army Game; Michigan, Minnesota.	\$3.90
SDU 62002	UNIVERSAL INTERNATIONAL NEWS REEL No. 102 (1 reel), Universal. Contains: First D.P.'s arrive in New York; Marine Corps Celebrates 175th Anniversary; Strategists' View Walker 1946; Let them go; Football—Northwestern-Gibbs; Stock; Georgia Tech Data; Radio-Dame-Navy.	\$3.90
SDU 62003	UNIVERSAL INTERNATIONAL NEWS REEL No. 103 (1 reel), Universal. Contains: Truman Visits in Florida; After Wintling Election; California First; American First; Peace Time Drafts; Football—SMU-Texas A. & M. at Cotton Bowl; Penna State-Penn. Army-Banford.	\$3.90
SDU 62004	UNIVERSAL INTERNATIONAL NEWS REEL No. 104 (1 reel), Universal. Contains: Trip Deferred to Make; Truman Visits in Florida; American Strike; Long Beach; Long Beach; American Strike; Football—Navy-Duquesne-Northampton; Army-Penn.	\$3.90
SDU 62005	UNIVERSAL INTERNATIONAL NEWS REEL No. 200 (1 reel), Universal. Contains: Elaborate Christmas Parade; Statue of Father Pagan; Christmas Eve; Football—Navy.	\$3.90
SDU 68002	WHICH WAY THIS TIME (1 reel), Office of Public Administration. The problem of inflation.	\$2.98
SDU 60002	WORK OF THE U. S. PUBLIC HEALTH SERVICE (2 reels), Bray. Story of the Service from its simple beginnings in 1792 to its great organization of today; its duties in prevention and investigation of diseases.	\$19.95

## 100 ft. "Soundies" Musicals

SDU 10027	ALABAMA BOUND (100'), Jackie Green, Official.	\$2.95
SDU 10028	ALABAMA I LOVE YOU (100'), Claude TORRELL, Official.	\$2.95
SDU 10029	AMOR (100'), Edith Vane, Mildred Ray Baran, Ernie Flettio. Professions.	\$2.90
SDU 10030	AMOR (100'), With Cordeira and Six Orchestra, Castle.	\$2.90
SDU 10031	ANA LANI (100'), Ray Kienny, Official.	\$2.90
SDU 10032	ANNIVERSARY WALTZ (100'), with Bare Flout and Helen Cole. Castle.	\$2.90
SDU 10033	ARVIL CHOBUS (100'), Al Ganshor, Pictorial.	\$2.90
SDU 10034	AT THE ARVIL BLOSSOM TIME (100'), Minnie and Maude et Maudie. Official.	\$2.90
SDU 10035	BATTLE BROADSIDE (100'), Marilyn Stuart, Castle.	\$2.90
SDU 10036	BAY OF ST. PETERS (100'), Service A. V. N., Official.	\$2.90
SDU 10037	BEYOND THE TOP (100'), The Three Suns, Official.	\$2.90
SDU 10038	BIG BLUE (100'), With D. G. and Official.	\$2.90
SDU 10039	BIG IN THE NIGHT (100'), Cab Callery, Official.	\$2.90
SDU 10040	BIG POWER MENLEY (100'), Official.	\$2.90
SDU 10041	BIG BOSS (100'), Official.	\$2.90
SDU 10042	BIG BOSS (100'), Official.	\$2.90
SDU 10043	BY THE LIGHT OF THE SILVER MOON (100'), The Dinning Sisters, Castle.	\$2.90
SDU 10044	CALL OF THE CANYON, THE (100'), Official.	\$2.90
SDU 10045	CARAVAN (100'), with The Three Suns, Official.	\$2.90
SDU 10046	CATERPILLAR SHUFFLE (100'), Schaeff, Leo. Pictorial.	\$2.90
SDU 10047	CHOO! CHOO! (100'), The King's Men, Official.	\$2.90
SDU 10048	CLARENCE (100'), Dana Miller, Gene Goodwin, Official.	\$2.90
SDU 10049	COME TO BRAY (100'), Official.	\$2.90
SDU 10050	CONQUEST OF REVOLUTION (100'), Walter Howard, Official.	\$2.90
SDU 10051	CONCERTINA WAR, THE (100'), Music Newsreels.	\$2.90
SDU 10052	CONTINENTAL (100'), Official.	\$2.90
SDU 10053	COZY (100'), Official.	\$2.90
SDU 10054	CRAZY SONG (100'), Davis Sherrill, Hollywood Film.	\$2.90

80	SDU 18025	DANCE WITH A DOLLY (1907), George Fenton Orchestra, Official	\$2.50
80	SDU 18030	DEEP PURPLE (1907), Larry Clinton, Pictorial	\$2.50
80	SDU 18044	DIPSY DOODLE (1907), Larry Clinton, Pictorial	\$2.50
80	SDU 18050	DO NO DINGING TELL YOU WE CAME FROM ME (1907), Glenn Swadlow	\$2.50
80	SDU 18092	DON'T CRY (1907), Vincent Lopez Orchestra, Official	\$2.50
80	SDU 18010	DREAM, DREAM, DREAM (1907), Les Elgart, Official	\$2.50
80	SDU 18090	DRY GUN (1907), Duke Eddy, Cass, Official	\$2.50
80	SDU 18055	A FELLER WHO PLAYS IN A BAND (1907), Will Baxter, Official	\$2.50
80	SDU 18020	FRENCH (1907) Carlos Ferrando, Official	\$2.50
80	SDU 18010	GOLFER'S LAMENT, THE (1907), Arthur Bryant, Movie News, Reel	\$2.50
80	SDU 18028	HARRIET (1907), Chuck Fests's Orchestra, Official	\$2.50
80	SDU 18048	HES A LATIN FROM STATEN ISLAND (1907), with Alvin, and His Orchestra, Official	\$2.50
80	SDU 18080	HO HO HO (1907), Dining Salers, Official	\$2.50
80	SDU 18061	HOW COME YOU DO ME LIKE YOU DO (1907), Will Bradley and His Orchestra, Cass	\$2.50
80	SDU 18035	I CAN'T SING YOU ANYTHING BUT LOVE (1907), Carole's March, Official	\$2.50
80	SDU 18024	I DON'T WANT TO WALK WITHOUT YOU (1907), Kay Lanyon, Cass	\$2.50
80	SDU 18051	I LOOK AT YOU (1907), Alan Ladd, Official	\$2.50
80	SDU 18078	I WANT A GIRL (1907), The Ethel Bern, Cass	\$2.50
80	SDU 18012	I WISH I DIED IN MY CRADLE (1907), Art Dixon, Pictorial	\$2.50
80	SDU 18011	IF YOU'RE IN MY DREAMS (1907), Duke Eddy, Official	\$2.50
80	SDU 18036	I'LL BE SEENING YOU (1907), Rex Sinatra and His Orchestra, Dale Belmont, Official	\$2.50
80	SDU 18009	I'M TIRED OF WAITING FOR YOU (1907), Will Bradley's Orchestra, Official	\$2.50
80	SDU 18036	IN AN EIGHTEENTH CENTURY DRAWING ROOM (1907), D. H. Robinson and His Swagbarts, Cass	\$2.50
80	SDU 18031	IN LOVE WITH A SONG (1907), Gene Grounds, Home and Blue, Cass	\$2.50
80	SDU 18020	IT ALL COMES BACK TO ME NOW (1907), Tomara and Del Calver's Orchestra, Cass	\$2.50
80	SDU 18011	IT'S A WONDERFUL THING (1907), Bob Hampton, Cass	\$2.50
80	SDU 18025	IT'S A GREAT DAY FOR THE IRISH (1907), Gus Van, Cass	\$2.50
80	SDU 18027	IT'S NOTHING NEW (1907), Al Deano's, Pictorial	\$2.50
80	SDU 18014	JAVA JIVE (1907), Al Deano's, Pictorial	\$2.50
80	SDU 18020	KEE-KEE, DIDDLE-DEE (1907), Virginia Meyer and The Fug Merry Maids, Official	\$2.50
80	SDU 18030	MY BLUE HEAVEN (1907), Harry Gold, Official	\$2.50
80	SDU 18025	MY BOOBY (1907), Larry Clinton, Pictorial	\$2.50
80	SDU 18015	MY BRAVE LOVER, A SAILOR (1907), Luban Lang, Pictorial	\$2.50
80	SDU 18014	MY REVERIE (1907), Larry Clinton, Pictorial	\$2.50
80	SDU 18067	NAUTIC DANCE (1907), Silvia O'Neil, Broadway	\$2.50
80	SDU 18015	NEVER WAIT A LILY WITH WINE (1907), Jean Borckers, Features	\$2.50
80	SDU 18020	THE NIGHT IS YOUNG AND YOU'RE SO BEAUTIFUL (1907), Bob Hampton, Cass	\$2.50
80	SDU 18027	THE NIGHT WE MET IN HONGKONG (1907), Larry Clinton, Pictorial	\$2.50
80	SDU 18026	THE NIGHT WE MET IN HONGKONG (1907), Lenny Ross, Official	\$2.50
80	SDU 18010	NIGHTMARE SAND IN BERKELEY SQUARE, A (1907), with The Radio Orchestra, Official	\$2.50
80	SDU 18000	NOTHING BUT ROMANCE (1907), Dick Denold and Viola Van, Features	\$2.50
80	SDU 18006	OH, SUSANNA (1907), The Charleston, Official	\$2.50
80	SDU 18011	OH, WAKE UP, DOLLY (1907), Will Bradley, Official	\$2.50
80	SDU 18010	PAVANE (1907), Dave Schelos and His Swagbarts, Cass	\$2.50
80	SDU 18022	PEE THE PEEPER (1907), Bess Miller, Official	\$2.50
80	SDU 18021	PLAYERS LOVES, A SAILOR (1907), Luban Lang, Pictorial	\$2.50
80	SDU 18029	RIGHT KIND OF GIRL, THE (1907), Movie Newsreels	\$2.50
80	SDU 18030	ROCKIN' CHAIR (1907), Mally Brothers, Official	\$2.50
80	SDU 18017	ROSE O' DAY (1907), Dick Todd, Official	\$2.50
80	SDU 18018	ROW, ROW, ROW (1907), with Jay Widge, Cass	\$2.50
80	SDU 18025	ST. LOUIS BLUES (1907), Alvin Ray, Victor Brothers, Official	\$2.50
80	SDU 18017	SAME OLD STORY (1907), Del Caxins Orchestra, Official	\$2.50
80	SDU 18019	SAY BI BI (1907), with Haris Kay and His Orchestra, Cass	\$2.50
80	SDU 18011	SIDE BY SIDE (1907), Nick Luss, Official	\$2.50
80	SDU 18031	SILENT NIGHT (1907), Cass	\$2.50
80	SDU 18011	SKIP TO MY LOU (1907), The Marz, Irene Daniel, Official	\$2.50
80	SDU 18015	SKYLARK (1907), Sonny Durham, Official	\$2.50
80	SDU 18027	SLEEPY LAZARUS (1907), Sonny Durham, Official	\$2.50
80	SDU 18014	SLEEPY TIME DOWN SOUTH (1907), Louis Armstrong, Official	\$2.50
80	SDU 18016	SLEEPYTIME GAL (1907), David Brock, Official	\$2.50
80	SDU 18027	SLIGHT BELL RINGING (1907), Gord Dwyer, Official	\$2.50
80	SDU 18019	SMILES (1907), Larry Clinton, Pictorial	\$2.50
80	SDU 18042	SMILES (1907), Tommy Reynolds, Official	\$2.50
80	SDU 18026	SOMEWHERE IN OLD WYOMING (1907), Art Dixon with Smokey, Pictorial	\$2.50
80	SDU 18011	STAR DUST (1907), Will Osborne's Orchestra, Cass	\$2.50
80	SDU 18027	STARDUST (1907), Harry Carl, Cass	\$2.50
80	SDU 18070	STORMY WEATHER (1907), Sugar Kahn, Cass	\$2.50
80	SDU 18036	SWEET, SWEET, SWEET (1907), Fred Cook, Official	\$2.50
80	SDU 18080	SWEET SUE (1907), Six Hits and a Mix, Official	\$2.50
80	SDU 18083	SWEETHEART OF SIGMA CUM (1907), Martin Stewart, Official	\$2.50
80	SDU 18083	SWIM SUIT REVUE (1907), Movie Newsreels, There's a million ways and meanings these suits	\$2.50
80	SDU 18035	SWINGING ON A STAR (1907), Mary Leonard and His Six Hot Jazels, Official	\$2.50
80	SDU 18011	TAKE ME BACK TO MY BOOTS AND SADDLE (1907), Carole's March, Official	\$2.50
80	SDU 18030	TAKE ME BACK TO MY BOOTS AND SADDLE (1907), Movie Newsreels, Official	\$2.50
80	SDU 18031	THERE IS NO SUNSHINE (1907), Spauldiner, Official	\$2.50
80	SDU 18027	THE THINGS I LOVE (1907), Larry Rich, Official	\$2.50
80	SDU 18031	THAT WONDERFUL FEELING (1907), Al Trace and His Orchestra, Official	\$2.50
80	SDU 18011	THIS AM Packer, Official	\$2.50
80	SDU 18027	TICKLE ME (1907), Eddieye Nissen, Official	\$2.50
80	SDU 18016	TIC TA TIC OF WINE (1907), Sam Kothe, Official	\$2.50
80	SDU 18034	TICA TICA TICA (1907), Sugar Harmon, Official	\$2.50
80	SDU 18017	TILL YOU (1907), Mally Brothers, Official	\$2.50
80	SDU 18010	TURN OUT THE LIGHTS (1907), Vincent Lopez, Official	\$2.50
80	SDU 18016	TWO HEARTS THAT PASS IN THE NIGHT (1907), Bob Hampton, Cass	\$2.50
80	SDU 18020	WAVING APPLES TO A LILAC TREE (1907), King Sisters, Alvin Ray, Official	\$2.50
80	SDU 18028	UNSPRIFICATED SUE (1907), June Burnette, Pauline Drake, Features	\$2.50
80	SDU 18073	VIRGINIA, GEORGIA AND CAROLINE (1907), Cab Callaghan, Official	\$2.50
80	SDU 18033	WOLFE BATHMAN (1907), Al Deano's, Pictorial	\$2.50
80	SDU 18031	WHATCHA KNOW JOE (1907), Larry Clinton, Pictorial	\$2.50
80	SDU 18035	WHEN AUNT MINNIE PLAYS THE MINNET IN A (1907), Official	\$2.50
80	SDU 18030	WHEN PADDY MIGHTY PLAYS THE HARP (1907), Gus Elgart, Official	\$2.50
80	SDU 18032	WHEN YOU'RE NEAR ME (1907), Viola Van, Cass	\$2.50
80	SDU 18032	WHEN WAS MY LITTLE DOG GONE (1907), Claude Tur Hill and His Orchestra, Cass	\$2.50
80	SDU 18030	WHEREVER THERE'S ME THERE'S YOU (1907), The T. Wals, Official	\$2.50
80	SDU 18032	WHISPERING (1907), Bob Kennedy, Official	\$2.50
80	SDU 18061	WHISTLER AND HIS DOG (1907), Alvin Ray, Official	\$2.50
80	SDU 18020	WINTER WONDERLAND (1907), The Gladding Sisters and Alvin Ray, Official	\$2.50
80	SDU 18020	WAVE MY LUCKY STAR (1907), Jack Kelly and Alvin Ray, Official	\$2.50
80	SDU 18010	YOU BELONG TO MY HEART (1907), Vinca Richards, Official	\$2.50
80	SDU 18010	YOU'LL HAVE TO SWING IT (1907), Jerry Moran, Official	\$2.50
80	SDU 18040	YOU'RE THE ONE (1907), Loni Michels, Pictorial	\$2.50

## Concert Films

80	SDU 2000	ALFRED CORTOT, Pianist, Reel Two (1 reel), showing "Chopin's Corcoran" by DeBussey, Part 11, Halberg	\$2.50
80	SDU 2001	ANTONIO TOCCHINI (12 reels), D.W. Vardi's "Hymn to Nature" performed by symphony orchestra and stars under Toscanini	\$2.50
80	SDU 2009	AVIA (1/2 reel), Alvin Pictorial, The background in ferns a background for saxophone Cantabrigia	\$2.50
80	SDU 2010	ELINE KLINGE NACHTRUCK (11 reels), with Vienna Philharmonic Orchestra, Albinus/Sterling	\$2.50
80	SDU 2011	EMANUEL FEURMANN, Cellist (1 reel), Official, Cass	\$2.50
80	SDU 2011	FIFTH SYMPHONY (1 reel), with Vienna Philharmonic Orchestra, Albinus/Sterling	\$2.50
80	SDU 2012	IGOR GIBEL, Pianist, Reel 1 (1 reel), containing "Large Air Fugue" from "The Well-Tempered Clavier" by J.S. Bach	\$2.50
80	SDU 2013	JACOB GIMPEL, PIANIST, Reel 1 (1 reel), containing "Two Etudes" by Chopin	\$2.50
80	SDU 2013	JACOB GIMPEL, PIANIST, Reel 2 (1 reel), containing "Impromptu in A Flat Major" by Chopin	\$2.50
80	SDU 2013	JACOB GIMPEL, PIANIST, Reel 3 (1 reel), containing "Nocturne in F Sharp Major" by Chopin	\$2.50
80	SDU 2013	JACOB GIMPEL, PIANIST, Reel 4 (1 reel), containing "Etude in E Major" by Chopin	\$2.50
80	SDU 2020	JOSE ITURBI, Pianist, Reel 2 (1 reel), containing "Three Op. 7 Nocturnes" by Chopin	\$2.50
80	SDU 2022	LONDON AND GREY AIR (11 reels), Educational, Percy Grainger's illustrations on piano	\$2.50
80	SDU 2025	MARRIAGE OF FIGARO (3 reels), Opera, Official	\$2.50
80	SDU 2026	METROPOLITAN STRING QUARTETTE—FOLK SONGS (1 reel), Pictorial	\$2.50
80	SDU 2027	METROPOLITAN STRING QUARTETTE—MOZART FILM REEL (1 reel), Pictorial	\$2.50
80	SDU 2028	MISHEL PIATRO AND HIS ORCHESTRA, Reel 2 (1 reel), containing "The Swan" by Camille Saint-Saëns, from the "Ballets de la Bayreuth", Official	\$2.50
80	SDU 2024	MISHEL PIATRO AND HIS ORCHESTRA, Reel 3 (1 reel), containing "Overture to Marriage of Figaro" from "Opera from Carmen" by Bizet, from the "Ballets de la Bayreuth", Official	\$2.50
80	SDU 2026	MYRA HESS, Pianist (1 reel), playing "First Movement in G-sharp minor, Opus 27 (Appassionata) by Beethoven, Official	\$2.50
80	SDU 2028	WINKIN' UP BARON (10 reels), "The Pied Piper", with Walt in a Flat, Flight of the Bombardier, Official	\$2.50
80	SDU 2001	WILLIAM PRIMOBE, Violist (1 reel), Pictorial, playing "Pavane" by Beethoven, "Ave Maria" by Schubert, "Capriccio" by Paganini	\$2.50
80	SDU 2028	WILLIAM TELL (15 reels), Opera, Official	\$2.50
80	SDU 2029	YEHU MENCHIN, Violinist, Reel 2, 11 reels, containing "Rhapsody in G-sharp minor, Opus 27 (Appassionata) by Beethoven, Official	\$2.50
80	SDU 2029	YEHU MENCHIN, Violinist, Reel 3, 11 reels, containing "The Well-Tempered Clavier, No. 24" by J.S. Bach, Official	\$2.50
80	SDU 2029	YEHU MENCHIN, Violinist, Reel 4, 11 reels, containing "The Well-Tempered Clavier, No. 24" by J.S. Bach, Official	\$2.50
80	SDU 2029	YEHU MENCHIN, Violinist, Reel 5, 11 reels, containing "The Well-Tempered Clavier, No. 24" by J.S. Bach, Official	\$2.50
80	SDU 2029	YEHU MENCHIN, Violinist, Reel 6, 11 reels, containing "The Well-Tempered Clavier, No. 24" by J.S. Bach, Official	\$2.50
80	SDU 2029	YEHU MENCHIN, Violinist, Reel 7, 11 reels, containing "The Well-Tempered Clavier, No. 24" by J.S. Bach, Official	\$2.50
80	SDU 2029	YEHU MENCHIN, Violinist, Reel 8, 11 reels, containing "The Well-Tempered Clavier, No. 24" by J.S. Bach, Official	\$2.50
80	SDU 2029	YEHU MENCHIN, Violinist, Reel 9, 11 reels, containing "The Well-Tempered Clavier, No. 24" by J.S. Bach, Official	\$2.50
80	SDU 2029	YEHU MENCHIN, Violinist, Reel 10, 11 reels, containing "The Well-Tempered Clavier, No. 24" by J.S. Bach, Official	\$2.50
80	SDU 2029	YEHU MENCHIN, Violinist, Reel 11, 11 reels, containing "The Well-Tempered Clavier, No. 24" by J.S. Bach, Official	\$2.50

## Drama

80	SDU 2101	DESTINY (12 reels), with Alice B. Francis, Deane Jagger, Story of seven brothers stranded in the desert and their struggle for survival	\$2.50
80	SDU 2102	DINNER DATE WITH DEATH (12 reels), Showing what happens when three deadly enemies are invited to dinner	\$2.50
80	SDU 2103	THE DREAMER (12 reels), Mystery story with Jack Holt	\$2.50
80	SDU 2104	STRONGER (12 reels), Showing Gaylord Fitzgerald's "Kathleen" and "The Yellow Wallpaper" by Charlotte Perkins Gilman	\$2.50
80	SDU 2105	VOICE OF EXPERIENCE (12 reels), The 4th of the 4th series of a man who stole money from his firm, then allowed his father to assume the blame for his act	\$2.50
80	SDU 2106	VOICE OF EXPERIENCE, THE, No. 2 (11 reels), Rev. The Voice of Experience, showing how a young lawyer with a skillful mind and a heart of gold, but who is a man of no conscience, is asked to give advice to a woman who has been wronged by a man who is a man of no conscience	\$2.50
80	SDU 2107	VOICE OF EXPERIENCE, THE, No. 3 (11 reels), Rev. The Voice of Experience, showing how a young lawyer with a skillful mind and a heart of gold, but who is a man of no conscience, is asked to give advice to a woman who has been wronged by a man who is a man of no conscience	\$2.50
80	SDU 2108	VOICE OF EXPERIENCE, THE, No. 4 (11 reels), Rev. The Voice of Experience, showing how a young lawyer with a skillful mind and a heart of gold, but who is a man of no conscience, is asked to give advice to a woman who has been wronged by a man who is a man of no conscience	\$2.50
80	SDU 2109	VOICE OF EXPERIENCE, THE, No. 5 (11 reels), Rev. The Voice of Experience, showing how a young lawyer with a skillful mind and a heart of gold, but who is a man of no conscience, is asked to give advice to a woman who has been wronged by a man who is a man of no conscience	\$2.50
80	SDU 2110	VOICE OF EXPERIENCE, THE, No. 6 (11 reels), Rev. The Voice of Experience, showing how a young lawyer with a skillful mind and a heart of gold, but who is a man of no conscience, is asked to give advice to a woman who has been wronged by a man who is a man of no conscience	\$2.50
80	SDU 2111	VOICE OF EXPERIENCE, THE, No. 7 (11 reels), Rev. The Voice of Experience, showing how a young lawyer with a skillful mind and a heart of gold, but who is a man of no conscience, is asked to give advice to a woman who has been wronged by a man who is a man of no conscience	\$2.50
80	SDU 2112	VOICE OF EXPERIENCE, THE, No. 8 (11 reels), Rev. The Voice of Experience, showing how a young lawyer with a skillful mind and a heart of gold, but who is a man of no conscience, is asked to give advice to a woman who has been wronged by a man who is a man of no conscience	\$2.50
80	SDU 2113	VOICE OF EXPERIENCE, THE, No. 9 (11 reels), Rev. The Voice of Experience, showing how a young lawyer with a skillful mind and a heart of gold, but who is a man of no conscience, is asked to give advice to a woman who has been wronged by a man who is a man of no conscience	\$2.50
80	SDU 2114	VOICE OF EXPERIENCE, THE, No. 10 (11 reels), Rev. The Voice of Experience, showing how a young lawyer with a skillful mind and a heart of gold, but who is a man of no conscience, is asked to give advice to a woman who has been wronged by a man who is a man of no conscience	\$2.50
80	SDU 2115	VOICE OF EXPERIENCE, THE, No. 11 (11 reels), Rev. The Voice of Experience, showing how a young lawyer with a skillful mind and a heart of gold, but who is a man of no conscience, is asked to give advice to a woman who has been wronged by a man who is a man of no conscience	\$2.50

# Bargains in 2" x 2" COLOR SLIDES

Here are more than 100 sets of beautiful color slides at an almost unbelievably low price. Everyone can afford to own many sets at this bargain figure. They are of top quality — and look at the wide range of subjects! You can view these in the Pictar Viewer described on this page, or project them in your own slide projector. Each set consists of 10 full color 2x2 mounted slides. The list price on these is \$1.00 per set. Blackhawk has them for you.

**89¢ per set**

## Traveling Abroad

- 5-18 Paris and Notre Dame Cathedral
- 5-19 Landmarks in Paris
- 5-20 Paris and Points of Interest
- 5-22 Scenes in Madrid
- 5-21 Past and Present in Limerick
- 5-25 Rome and Landmarks
- 5-26 Rome, Ruins, Mt. Vesuvius
- 5-27 Rome Has Ancient Splendor
- 5-28 Vatican City and Religious Rome
- 5-29 Rome — The Old and New
- 5-30 Genoa — and Columbus
- 5-31 Venice, City of Canals
- 5-32 Pyramids to Cairo
- 5-33 Cairo — Ancient and Modern
- 5-34 Landmarks on the Nile
- 5-35 Street Scenes in Bombay
- 5-36 Swiss Alps and Swiss Majesty
- 5-37 Swiss Panorama
- 5-38 Mexico — Tourist Paradise
- 5-40 Teaming Mexico
- 5-41 Bermuda — Vacation Playground
- 5-42 Cuba — Sightseeing Havana
- 5-43 Classic England
- 5-44 Haifa and Tel Aviv
- 5-46 Alaska
- 5-47 Hawaii
- 5-48 Scene Hawaii, Around Honolulu
- 5-100 Quebec City, Canada
- 5-128 Colorful Japan
- 5-129 Festival Time in Japan
- 5-130 Ottawa, Capital of Canada
- 5-131 Ottawa, Capital of Canada

- 5-131 Vancouver, B. C., Canada
- 5-130 Alaska — American Outpost
- 5-151 Canada
- 5-132 Newfoundland
- 5-133 Australia

## Traveling in America

- 5-1 Along New York's Hudson River
- 5-2 Rodeo in California
- 5-3 Around New York City
- 5-4 Times Square to Central Park
- 5-5 Salt Lake City, Utah
- 5-6 Magnificent Niagara Falls
- 5-7 Hollywood to Frisco
- 5-8 New York City — Midtown Westside
- 5-9 New York City — Midtown Eastside
- 5-10 New York City — Uptown
- 5-11 New York City — Financial District
- 5-12 Chicago, Illinois
- 5-13 Notre Dame University
- 5-14 Denver, Colorado
- 5-15 Wisconsin Dells
- 5-16 Petrified Forest
- 5-17 Mackinac Island, Michigan
- 5-18 Bryce Canyon National Park
- 5-19 Grand Canyon National Park
- 5-20 Grand Teton National Park
- 5-21 Mt. Rainier National Park
- 5-22 Glacier National Park
- 5-23 The Spectacular Grand Tetons
- 5-24 Mojave Desert Snow Scenes

- 5-53 Winter Splendors of the Grand Tetons
- 5-55 Crater Lake National Park
- 5-56 Zion National Park
- 5-57 Yellowstone National Park
- 5-58 Yosemite National Park
- 5-59 Sequoia National Park
- 5-60 Santa Fe, New Mexico
- 5-71 Los Angeles, California
- 5-72 Hollywood, California
- 5-73 San Diego, California
- 5-74 Miami, Florida
- 5-75 St. Augustine, Florida
- 5-76 Turpin Springs, Florida
- 5-77 St. Petersburg, Florida
- 5-79 Cypress Gardens, Florida
- 5-80 Daytona Beach, Florida
- 5-81 Silver Springs, Florida
- 5-82 Modula, Cypress Gardens, Florida
- 5-83 Rara Bird Farm, Miami
- 5-84 Florida Indians and Villages
- 5-85 Parrot Jungle, Miami
- 5-86 Alligator and Ostrich Farm
- 5-87 Florida Boats (Luxury Fishing Craft)
- 5-88 Arkansas Ozarks
- 5-89 Oklahoma
- 5-90 New Orleans, La.
- 5-91 Abraham Lincoln in Illinois
- 5-92 Rocky Mountain National Park
- 5-93 Colorado
- 5-94 Garden of the Gods
- 5-95 Rocky Mountain Babbings
- 5-101 New York City
- 5-102 Massachusetts
- 5-103 Boston, Mass.
- 5-104 Scenic New Hampshire
- 5-105 Winter in Vermont
- 5-106 Philadelphia, Penna.
- 5-107 Williamsburg, Va.
- 5-108 Mt. Vernon, Va.
- 5-109 Historical Old Virginia
- 5-110 Skyline Drive, Shenandoah National Park, Va.
- 5-111 Great Smoky Mountains
- 5-112 The Beautiful Ohio — (Ohio River Scenic)
- 5-113 Acadia National Park (Maine)
- 5-114 Cherry Blossom Time in Washington, D. C.
- 5-115 Niagara Falls (Set No. 2)
- 5-116 Washington, The City Beautiful
- 5-117 Washington, The Renowned City
- 5-118 Niagara Falls (Set No. 1)
- 5-119 Monogram Valley
- 5-120 Desert Flowers
- 5-121 Rainbow Springs, Florida
- 5-122 Florida Flowers (Set No. 1)
- 5-123 Florida Flowers (Set No. 2)
- 5-124 Sunken Gardens, St. Petersburg
- 5-125 Flowers at Sunken Gardens, St. Petersburg
- 5-126 Kansas City, Missouri
- 5-127 St. Louis, Missouri
- 5-132 Charleston, S. C.
- 5-133 Cleveland, Ohio
- 5-132 Glory of Yellowstone
- 5-135 Along Yellowstone Trails
- 5-136 Santa Barbara, Calif.
- 5-137 Missions — California
- 5-138 Big Bend National Park
- 5-139 Hialeah Busa Track, Florida
- 5-140 Miami Business District
- 5-141 Miami Waterfront
- 5-142 Miami Enclaves
- 5-143 California Wonderland
- 5-144 New York City — Radio City
- 5-145 Colorado and Estes Park
- 5-148 Grandeur of the Tetons
- 5-149 Hoover Dam

## Religious

- 5-55 Passion Play

## Show Girls

- 5-51 Pin-Up Girls
- 5-52 Backstage
- 5-52 Ice Copades

## For Children

- 5-45 Day at the Circus
- 5-46 Under the Big Top
- 5-47 Story of Pinocchio
- 5-48 Peter Rabbit
- 5-49 Tarzan
- 5-54 Brookfield Zoo

## PICTAR VIEWER for 2" x 2" Slides



A convenient, lightweight viewer for 2"x2" slides, streamlined in design, made of molded plastic. Makes possible enlarged viewing of any 2"x2" slide against any light source such as window or lamp.

5-58 PICTAR VIEWER purchased alone **\$1.00**

5-58 PICTAR VIEWER, in conjunction with any one set of ten 2"x2" slides listed on this page, only **\$1.79**

## SPECIAL IN R-I MUSICALS

At inventory time the end of May we turned up with an accumulation of good used 100' 16mm. reverse-image musicals that are slightly incomplete — otherwise in very good condition. Some of these prints are minus the main titles — others have a short length at the end missing — still others may be short a length in the film paper. However, most of them run 90 feet in length or over, and at our close-out price are a REAL bargain — particularly since the titles represented are a cross section of the entire library of Panoram musicals.

We also have a few hundred prints of these reverse-image 100' musicals on which we have but four to six prints of a title left in stock. These prints are complete and in first class condition.

We can't give you any choice of title for most of these films have no identifying stickers. Neither — particularly if you take several dozen prints from the group — can we guarantee against duplication. BUT — while this stock of incomplete and limited quantity 100' reverse-image musicals remains on hand, you may buy as many prints as you want at only

**6 for \$1.98**

## GRAB BAG

Here's a chance for you to grab onto a bargain in a big way! We find ourselves with quite a stock of miscellaneous titles in used 100' 16mm. silent prints and used 50' 8mm. prints. They are all complete — don't confuse these with the incomplete 100' lengths of film offered elsewhere in this catalog — and are regular Official, Castle, Pictorial, and Panoram releases. They ARE used, but in good condition.

Here's the deal: We're offering these extra low prices to clear them out. We can't sell them any longer at these prices, but we do realize that we won't duplicate among the films we send you. So, first come, first served, with the choicest grab of our subjects at the amazing low price of:

**Used 100' 16mm. silent films . . . 3 for \$2.98**

**Used 50' 8mm. films . . . 3 for \$1.98**

Foreign orders—except Canada and Mexico—must total a minimum of \$10 (25) 7

# BIG CLOSE-OUT OF BRAND NEW 16mm. Sound, 16mm. Silent, 8mm. Price AT LESS THAN HALF PRICE!

These films are subjects which we are liquidating for Castle Films, Pictorial, United World, and Hollywood Films, or subjects taken from our own stock which we have decided to discontinue. All are brand new, first quality, in their original cartons. You'll save over 50% on any film you order from this selection.

## 16mm. SOUND

Notice that these films vary in length from 7 reels to 100' — they are not all 1-reelers. Be sure to order by complete number and title, so we'll know exactly what you want.

<b>ALL AMERICAN MICKY</b>	
Cartoon with Mickey Mouse.	
16 SDN 585 (200') .....	\$5.95
16 SDN 6758 (100') .....	\$3.95
<b>THE BIG BROADCAST</b>	
Clayton Kopp, Ted Yoppington with animated figures.	
16 SDN 5824 (1 reel) .....	\$6.95
<b>RIP LEAGUERS</b>	
The big names in big league baseball show their stuff.	
16 SDN 30832 (1 reel) .....	\$7.95
<b>BORDER MENACE</b>	
Western with Bill Cody.	
16 SDN 28406 (6 reels) .....	\$39.95
<b>BROTHER GOLFERS</b>	
The Tinsney Brothers, famed golfing experts, show how to make the hard shots easy.	
16 SDN 30839 (1 reel) .....	\$5.95
<b>CAVALCADE OF MUSIC</b>	
George Pal makes his eleven puppets sing and play all sorts of musical instruments.	
16 SDN 5557 (1 reel) .....	\$6.95
<b>COPPER AND SILVER</b>	
How beautiful objects are made of these metals by skilled craftsmen, using primitive handcraft methods.	
16 SDN 85865 (1 reel) .....	\$7.95
<b>FLYING FEATHERS</b>	
A football match that is a lulu.	
16 SDN 30853 (1 reel) .....	\$5.95
<b>GEORGIA ON MY MIND</b>	
Carolyn Marsh sings the popular song.	
16 SDN 188105 (100') .....	\$1.98
<b>GOLD RUSH MICKY</b>	
Mickey Mouse Cartoon.	
16 SDN 6859 (100') .....	\$3.95
<b>THE HEALTH FARM</b>	
Farmer Al Falls thinks he's come to the right place for rest and relaxation. Does he get fooled?	
16 SDN 58168 (1 reel) .....	\$6.95
<b>HOUSE OF SECRETS</b>	
Feature with Leslie Fenton, Mutual Adams.	
16 SDN 18337 (7 reels) .....	\$49.95
<b>LOVE ON THE RANGE</b>	
Puppets in a comedy about the virile cowboys, the lovely heroines, and the wicked villains.	
16 SDN 58112 (1 reel) .....	\$5.95
<b>MICKY AND SIMON LEEGEE</b>	
Mickey Mouse Cartoon.	
16 SDN 6861 (100') .....	\$3.95
<b>MICKY AND THE GIANT</b>	
Mickey Mouse Cartoon.	
16 SDN 6864 (100') .....	\$3.95
<b>MICKY AND THE LILLIPUTIANS</b>	
Mickey Mouse Cartoon.	
16 SDN 6843 (100') .....	\$3.95
<b>MICKY GIVES A PARTY</b>	
Mickey Mouse Cartoon.	
16 SDN 6860 (100') .....	\$3.95
<b>MICKY PLAYS SANTA CLAUS</b>	
Mickey Mouse Cartoon.	
16 SDN 58250 (200') .....	\$5.95

## MICKY SAVES THE AIRMAIL

Mickey Mouse Cartoon.  
16 SDN 6862 (100')

## MICKY'S EXCITING PICNIC

Mickey Mouse Cartoon.  
16 SDN 6862 (100')

## MOUNTAIN MUSIC

Musical with Mabel Todd, Cindy Walker  
16 SDN 158176 (1 reel) .....

## MOVIE STAR MICKY

Mickey Mouse Cartoon.  
16 SDN 6863 (100')

## OVERNIGHT

Musical with Vincent Lopez and his Orchestra playing the popular  
16 SDN 18893 (100')

## THE PHANTOM COWBOY

Western with Ted Wells.  
16 SDN 28402 (6 reels) .....

## RED LIGHTS AHEAD

Feature with Andy Clyde, Lucille Gleason, Paula Stone.  
16 SDN 18335 (7 reels) .....

## RIDING THE CREST

This film covers a multitude of different ways of riding the sea waves — some beautiful, some thrilling.  
16 SDN 30874 (1 reel) .....

## ROMANCE AND RHYTHM

Musical with Kenny Stevens.  
16 SDN 158107 (1 reel) .....

## ROMANTIC RHYTHMS

Musical with Stan Kenton's famed orchestra.  
16 SDN 158109 (1 reel) .....

## SALT SHAKERS

Musical comedy with Jay C. Flippen and many variety acts.  
16 SDN 158210 (1 reel) .....

## SINGING STARS

Musical with Jerry Cooper, Jerry Wayne, and Laney flow — all male singers.  
16 SDN 158124 (1 reel) .....

## SONGS OF LOVE

Musical with Del Casino's Orchestra.  
16 SDN 158132 (1 reel) .....

## TEACHER'S PET

Hal Roach's Famous Kids are in and out of their usual hilarium just  
16 SDN 118166 (2 reels) .....

## TEXTILE AND DESIGN

Shows how the Mexican people produce the lovely fabric designs that they are famous for.  
16 SDN 85866 (1 reel) .....

## WASHINGTON IN VIRGINIA

A visit to the players in the State of Virginia intimately associated  
16 SDN 258128 (1 reel) .....

## WESTERN RACKETEERS

Western with Bill Cody.  
16 SDN 28401 (6 reels) .....

## WILLIAM PRIMROSE VIOLIST

Dr. Primrose plays "Violinista" by Beethoven, "Ave Maria" by Schubert, and "Cello" by Paganini.  
16 SDN 28484 (1 reel) .....

## 16mm. SILENT

Notice that we have both complete and headline versions of the films so be sure to specify which you want when you order. If you order by complete number and title, we'll be sure to get you what you want. The complete versions run approximately with the exception of cartoons, which are somewhat short headline versions, which are condensations of the complete run approximately 100'.

## FLYING FEATHERS

Two of the world's top football players put on a thrilling match.  
16 SDN 30853 (Complete) .....



# WESTERN SONGS

with Jerry Cooper, Spade Cooley and his Orchestra and Red River Dave

Three top Western tunes sung by two top singers — and played by a top Western orchestra. Jerry Cooper does WHERE THE MOUNTAINS MEET THE SKY — Spade Cooley and his Orchestra come through with the very catchy MY CHICKASHAY GIRL — and Red River Dave from down San Antonio way sings all about THE DUDE COWBOY. You'll sing about this Blackhawk bargain — another one AT LESS THAN WHOLESALE. New 1-reel prints regularly sell for \$19.75. At Blackhawk, while our bargain stock holds out, WESTERN SONGS (16 SDN 15B163) is only **\$9.95**



## FOOTBALL JAMBOREE

A hilarious custom football game between mare and mare.  
16 SLN 8855 (Headline) ..... \$1.49

## FOOTBALL PARADE OF 1943

Amv-Hilltop, North Carolina; Georgia, Massachusetts, Washington, Notre Dame-Navy, Southern Methodist-Texas, Northwestern-Olin State, Penn State-Pennsylvania, Yale-Harvard.  
16 SLN 33811 (Complete) ..... \$2.98  
16 SLN 33811 (Headline) ..... .99

## FOOTBALL PARADE OF 1949

Amv-Columbia, Notre Dame-Tulane, Arkansas-Vanderbilt, Stanford-Washington, Notre Dame-Navy, Boston College-Glennsmith, California-UCLA, Yale-Harvard.  
16 SLN 3386 (Headline) ..... .99

## FRAMEUP

Gandy Goose challenges his rival, Pinocchio Pig, in a boxing match, and it turns out to be quite a surprise!  
16 SLN 8553 (Headline) ..... \$1.49

## GANDY'S ADVENTURE

Gandy gives himself a goose when he is tricked into a stew by Mr. Fox!  
16 SLN 8354 (Headline) ..... \$1.49

## GOLF MAGIC

How are demonstrations proving a smart player doesn't even need clubs. It's more than 1949 golf — it's miracle golf!  
16 SLN 308152 (Complete) ..... \$2.19  
16 SLN 3383 (Headline) ..... .79

## THE HEALTH FARM

Farmers At Falls has trouble with a lot of wacky-reformer gadget!  
16 SLN 58108 (Complete) ..... \$3.98

## JUST ASK JUPITER

White Wax Mouse dreams he's a cat and has a wonderful time until he meets a bulldog!  
16 SLN 58211 (Complete) ..... \$3.98  
16 SLN 6856 (Headline) ..... \$1.49

## SUN, SEA AND SAILS

Yacht racing on Sound, bay and deep end!  
16 SLN 3385 (Headline) ..... \$1.49

## SURVIVAL UNDER ATOMIC ATTACK

Obtain Critical Defense film showing how the ordinary person can prepare himself for the event of an attack.  
16 SLN 85864 (Complete) ..... \$5.95

## SWINGING MALLETS

Here is polo as it is played by experts, and it's a fast-moving, slam-bang game.  
16 SLN 30895 (Complete) ..... \$2.19

## TRAILER LIFE

When At Falls takes the Wild West and awakes an Indian Chief on the warpath, there's lots of fun!  
16 SLN 58403 (Complete) ..... \$3.98

## WINDWARD WAY

The pit and pit of long-distance sailing is beautiful, sleek yachting.  
16 SLN 308105 (Complete) ..... \$2.39

8mm.

Notice that some of these are complete, some headline versions. Complete versions run about 150' with the exception of cartoons, which are somewhat shorter; headline versions, which are condensations of the complete film, run approximately 50'.

## CHINOOK'S CHILDREN

The raising and training of Eskimo dogs.  
8 SLN 33810 (Headline) ..... .79

## FRAMEUP

Gandy Goose Cartoon.  
8 SLN 58136 (Complete) ..... \$2.98

## GANDY'S ADVENTURE

Gandy Goose Cartoon.  
8 SLN 58143 (Complete) ..... \$2.98

## THE HEALTH FARM

Farmers At Falls Cartoon.  
8 SLN 52198 (Complete) ..... \$2.40

## MOUSE OF TOMORROW

Mighty Mouse Cartoon.  
8 SLN 52265 (Complete) ..... \$2.98

## TRAILER LIFE

Farmers At Falls Cartoon.  
8 SLN 58433 (Complete) ..... \$2.49



## MAINLINE U. S. A. (Used Kodachrome Prints)

Here is a 2-reel Kodachrome film in 16mm, sound that traces the impact of railroad construction over the last century as the prime means of the general development of our country — how the railroads today have a very direct effect on all our lives. Shown in great many spectacular shots of streamliners and freights at speed, across prairies, over bridges, and backgrounds of snow-capped peaks. Railroad fans can easily identify the train of their favorite railroad. You'll see streamliners and freights of the Monon, Rock Island, Milwaukee, New Haven, Santa Fe, New York Central, Pennsylvania, Burlington, Southern Pacific, Erie, Missouri Pacific, North Western, and many another pike. You'll also see many a yard goat at work, and many other activities of the railroads in maintaining the far-flung and complex services that they render. Even those of you who aren't first of all railroad fans will find this an informative, absorbing, entertaining and very beautiful film to have in your collection. (Prints of this now are valued at \$150.00.) 16 SDU 76C3.  
Price only **\$24.95**

Please order by number and title.

USC School of Cinematic Arts  
New Jelfer Moving Image Archive  
Lobster

# ACCESSORIES AND SUPPLIES



## CLEAR LEADER STOCK

100' lengths of brand new clear leader stock, extra heavy to withstand strain of handling and threading. This leader is available with a tailored to fit the needs of users of either sound or silent film. It is at the beginning of your films and let them take the heat and see the first section of the film would otherwise receive. It will make them look better and last longer. Packed in rolls of approximately 100'.

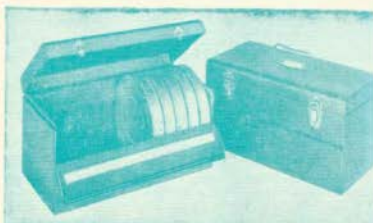
EN-56 Clear leader stock, one-side perforated for use with sound film.

EN-57 Clear leader stock, two-side perforated for use with silent film.

## NEW REELS AND CANS—16mm. AND 8mm.

Made by one of the top manufacturers in the business, these reels and cans are available from Blackhawk at the bargain prices you have come to depend on at "Sixteen's Super Market." The reels are stamped from a good grade of steel with sufficient spring to resist bending, yet are light in weight. Cans are embossed to achieve maximum rigidity. Reels and cans are of matching baked flat brown enamel finish.

200' capacity 8mm. reels (EN-11) or cans (EN-12), each	5	49	
3 for	\$1.29	6 for	\$2.49
400' capacity 16mm. reels (EN-1) or cans (EN-6), each	5	39	
3 for	\$1.49	6 for	\$2.79
400' capacity 8mm. reels (EN-13) or cans (EN-14), each	5	59	
3 for	\$1.49	6 for	\$2.79
800' capacity 16mm. reels (EN-2) or cans (EN-7), each	5	49	
3 for	\$3.98	6 for	\$7.49
1200' capacity 16mm. reels (EN-3) or cans (EN-8), each	5	70	
3 for	\$4.98	6 for	\$8.98
1600' capacity 16mm. reels (EN-4) or cans (EN-9), each	5	98	
3 for	\$3.79	6 for	\$10.98
2000' capacity 16mm. reels (EN-5) or cans (EN-10), each	5	69	
3 for	\$9.98	6 for	\$18.98



## AMBASSADOR REEL CASES

Here is a case for systematically storing, yet having easily available and 400' 8mm. and 16mm. films. These Ambassador Reel Cases are constructed with rounded corners, continuous piano type hinges and with individually welded partitions, continuous piano type hinges, welded seams, overhanging lip closure, changeable index card held nickel plated hardware, and rich lacquer hammered baked enamel finish, looking and durable. (Cases shown in illustration are not included).

EN-29, holding twelve 400' 16mm. cans or reels.

regularly \$5.50, only

EN-30, holding twelve 200' 8mm. reels.

regularly \$4.40, only

EN-37, holding twenty 400' or 300' 8mm. cans or reels.

regularly \$6.60, only

## NEW 16mm. CARRYING AND SHIPPING CASES

Here is a top line of durable fiber shipping cases made with metal corners and the usual telescoping top. All (with the exception of the case of 400' reels) have two fiber straps for extra strength. The cases for 400' reels have a single strap. These cases are available at unusually attractive prices, and are in stock for prompt shipment.

EN-15 Case for three 400' reels	\$1.29
EN-16 Case for two 800' reels	\$1.98
EN-18 Case for one 1600' reel	\$1.98
EN-17 Case for two 1600' reels	\$2.29

## USED 16mm. CARRYING AND SHIPPING CASES

These cases are of durable fibre with metal corners, fibre straps, and the usual telescoping top. They have seen some use, but are in good condition and will serve for a long time yet.

EU-21 for a single 800' reel or can, each	5	19	
3 for	\$3.98	6 for	\$5.79
EU-22 for a single 1200' reel or can, each	5	49	
3 for	\$4.29	6 for	\$7.98
EU-18 for a single 1600' reel or can, each	5	69	
3 for	\$4.79	6 for	\$8.98
EU-20 for three 1600' reels or cans, each	12	95	
			\$14.95

## USED 16mm. STORAGE CANS

We have a very good stock of used storage cans in the sizes indicated below. All are of standard manufacture, in good condition, and save you money at Blackhawk's bargain prices.

EU-9 1600' cans, each	5	39	
3 for	\$1.98	6 for	\$7.49
EU-8 1200' cans, each	5	69	
3 for	\$3.69	6 for	\$6.89
EU-7 800' cans, each	5	89	
3 for	\$2.89	6 for	\$4.98
EU-6 400' cans, each	3	8c	
3 for	98c	6 for	\$1.79

## STORAGE CANS FOR TWO 1600' REELS

Here is an attractive buy in a used storage can for a limited but particular purpose — a can having a capacity of two 1600' reels of the flat (not wide) type. Ideal for storing feature pictures and other long programs assembled onto two reels. Made of embossed triangles, these are a bargain at Blackhawk's price.

EU-59 Storage cans for two 1600' reels, each	\$98
--	------

## PHOTO SWEEP (ANTI-STATIC FILM CLEANER)



Here is a product that will be welcomed by so many film users who realize how much damage results from static electricity on films. That static results from handling, winding, running it through the projector — and a dirt on your film is attracted to it by static. This spray to wipe it away, the more static builds up, so easily dust and dirt particles are attracted to it, sweep the film.

PHOTO SWEEP gets rid of that static — and of dirt on the film at the same time. Simply dampen the tip of soft cotton material and draw your film through and across both sides in one operation. Instantly, your film will be clean and will be free of the static electricity that attracts most dirt. Also, the need for waxing is eliminated. Films are clean and will not dry out, and any minor scratches, marks in the film will be masked and not appear in projection.

PHOTO SWEEP is also available in Aerosol Spray form. An indispensable, gloves, camera slides, lenses, and other accessories.

EN 60 3 oz. bottle for motion picture film and filmstrips. Regularly \$1.25. Blackhawk's Price

EN-61 6 oz. Aerosol Spray Can, for transparencies, slides, etc. Regularly \$2.25. Blackhawk's Price

## Special on 8mm. Film Cans

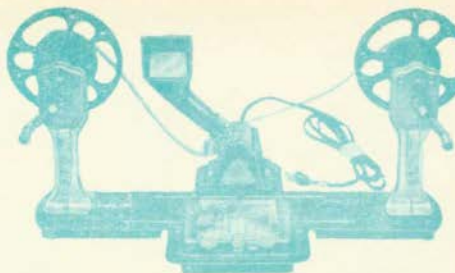
We made a lucky buy on 8mm. cans, and look at the bargains we can give you on these items! These cans of steel, with a built-in metal frame of steel that makes them look like a gun, are baked enamel. The embossing on these cans is in a center ring that makes the cans interlock tightly when stacked — preventing slipping, sliding stacks of cans. When you stack these cans, they stay stacked! They are new, but slightly shapen — some scratches or nicks in finish. It won't impair the good use you'll get from them.

8mm. 200' capacity cans, EN-55

Six for \$1.79 Twelve for \$2

## MANSFIELD 8MM. MOVIE EDITOR

This Editor, consisting of Viewer, Geared Rewinds, and Automatic Dry Splicer, all mounted on a metal base and beautifully finished in blue and gold, is just about the best buy in 8mm. equipment you'll find in many a day. It is easy to operate, handles 8mm. reels up to 400' capacity, and meets the requirements of both amateur and professional. The various parts are available individually as well as in the complete editor, so additional information on the set may be obtained by consulting the more detailed descriptions given below on the component parts. One of the most unusual things about this fine piece of equipment is its price. Regularly \$25.95, Blackhawk can bring the Mansfield Movie Editor **\$19.95** (EN-55) to you for just



### MANSFIELD VIEWER

The optically ground and polished lens system, and brilliant viewing screen on this viewer give sharp, clear, 1 1/2" (167 x 125) images, free from distortion, in die-cast metal construction. It is attractively finished in blue Hammered. Illustrated above as easier unit of Movie Editor. Regularly priced at \$10.50, the Mansfield Viewer Unit (EN-94) is available from Blackhawk at the low price of **\$7.95**

### MANSFIELD REWINDS

The rewinds will handle reels up to 800' capacity. They are equipped with finger-tip controlled stop levers, and their gear ratio of 5 to 1 makes for easy winding. They are of metal construction and have a gold anodized finish. The regular price of these rewinds is \$7.50. Blackhawk offers them to you (somewhat similar to those pictured above as part of the Editor), unit EN-95, **\$5.95** in only

### MANSFIELD AUTO-SPLICER

It has dual scraping blades with radial printing action, chrome steel film cutters ribbed for distortion-free operation, an automatic spring release when splicing is completed, and a non-proof moulded rubber base. The body is finished in blue Hammered. It gives a faster, cleaner splice, and film enthusiasts know that dry scraping produces a really permanent splice. All this (illustrated as part of the Editor above) would regularly be \$7.95. Blackhawk has the Auto-Splicer (EN-91) at the astonishing price of **\$5.95**

### MANSFIELD JUNIOR SPICER

A precision-made splicer at a remarkably low price, and one that will give years of satisfactory use. It comes complete as pictured, with splicer, bottle of film-splicing Cement, water bottle and scraping blade which is inserted in bottle cap, all mounted on a wooden base. The splicer itself is of heavy gauge metal construction anodized in silver and gold. The usual price is only \$3.50, but Blackhawk is able to offer you the Junior Splicer (EN-92) at the even more surprising price of only **\$2.79**



### CINELAC

Cinelaq protects film emulsion — either black and white or color — motion picture film, slides and stills — against the hazards of scratches, abrasions and finger marks. A new anti-static element minimizes the effects of static electricity in attracting dust and lint to the film surface. A 2 oz. bottle is enough to coat 1,500 feet of 16mm. film, 2,500 feet of 8mm. film, or approximately 2,000 square inches of film surface. For best results, it should be applied to the sensitive side of new prints before they are placed in service.

**EN-42 2 oz. bottle complete with applicator \$1.98** sells for only

### SPLICER SPECIAL!

**PRESTO DRY SPLICER** for 16mm. sound and silent, and 8mm., film. Here's a dry-veraper splicer that the job you normally expect of a unit selling for \$5.00 to \$10.00. But a very special purchase has given us a limited quantity which we can sell for but a fraction of those prices. The PRESTO cuts both film edges, has an adjustable dry scraper for removing emulsion. Film cement not included. Our item A-1. Very special at only **\$1.98**



## LIFELINE OF THE NATION

(Used Kodachrome Prints)

A 2-reel 16mm. sound film in full color Kodachrome showing the remarkable performance of our railroads during World War II. The emphasis in this film is more on the movement of freight than of passenger travel. As a result the film is somewhat in contrast to either MAINLINE U.S.A. or BIG TRAINS ROLLING. The viewer, too, will note another big difference — the emphasis of the majestic steam locomotive which was still — during the war — the number one source of motive power for freight as well as passenger transportation. There is a marked contrast with today when diesel power is close to taking over most principal runs. So, for those of you who have a particularly soft spot in your hearts for the steam locomotive, here's your chance to see some of the big boys of the Santa Fe, Union Pacific, Norfolk, and Western, Rio Grande, Southern Pacific, and Pennsylvania in action. You'll see lots of others, too. Prints of these films are valued at \$150.00 new.) 16 SDU 76C-1. Price only **\$24.95**

BLACKHAWK FILMS INC.  
DAVENPORT, IOWA

(25) 11

## SPECIALS IN USED SOUND PRINTS

### CHILDREN OF RUSSIA

Produced by Julien Bryan

This is an American made production photographed just after the close of World War II. You wouldn't expect to see a dramatization of "Turkeyberry Time" in this film, but it's there because this American classic is included in the Russian school curriculum. In this production we see Russian children engaged in their typical activities — going to school, tending their gardens, marching in parades, playing their favorite games, visiting museums and art galleries, and living in the summer Pioneer camps which — except for the ideology they teach — are somewhat comparable to summer camps in this country. Length 15 reels, 16mm. sound.

16 SDU 1538143. Price **\$9.95**

### THE PEACE BUILDERS

Short pictures of many conferences held by United Nation's leaders, beginning with the meeting of Churchill and Roosevelt in the Atlantic and ending with scenes at San Francisco. Length 1 reel, 16mm. sound. Original price now \$17.50. While Blackhawk's supply of good used prints remains available, 16 SDU 108844 is priced at only **\$2.98**



## The CALIFORNIA ZEPHYR

16 SDN 45B19 16mm. sound  
about 300 feet . . . . .

8 SLN 45B19 8mm. silent ver  
about 150 feet . . . . .

Known variously as "the most beautiful," "the best loved" and "the most talked about" train in the country, The California Zephyr and the country through which it passes is certainly one of the most photo-genic subjects yet to be featured in Blackhawk's Railroad Series. And we've worked harder and longer on this than on any of the other films yet released in the series. We feel the result is worth the effort.

The California Zephyr, operated jointly by the Burlington, Rio Grande and Western Pacific railroads is the most revolutionary train of the post-war era. A trip on it is more than getting from here to there — it's a vacation in itself. And our film not only shows you the train — but the spectacular route it travels.

We see this 12-car stainless steel streamliner, five of its cars with vista-domes, as it leaves Chicago's Union Station for its run to Denver over the Burlington — through the cornfields of Illinois — across the Mississippi River just before entering Burlington, Iowa, the flashing of the signal lights from a vista-dome — the diner, the lounge and the Pullman accommodations — then early the next

morning when the entire train goes to being backed into Denver's Union Station and the run to Salt Lake City.

The train starts climbing the Front Range of the Denver city limits—through dozens of feet above sea level. Then through Divide at more than 9,000 feet. The Canyon and out into the pastoral big City where it reaches Western Pacific Chicago.

The next morning, The California Zephyr of Nevada at night, enters California Feather River Canyon for a thrilling last

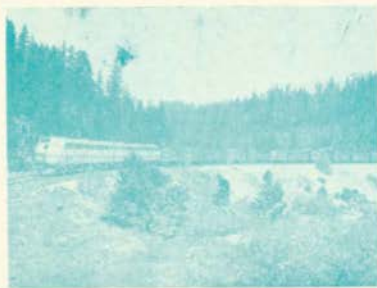
For every train-lover and every train fan, this is a must-see release in Blackhawk's Railroad Series.



## BATHING GIRLS--- THEN AND NOW

A fascinating subject showing the evolution of today's swim suit from the "bathing costume" of the 1800's. You'll see the rather quaint cotton costumes of the late 90's, the diving suits of the early 1900's, the two-piece suits of the mid-20's, and then developments in the modern trend with sun backs and figure-controlling fabrics. You'll get more than one shuckle out of the mid-twenties. And, as for the new ones — well, as our narrative says in the second version, "No matter how handsome a man may be, he can never compete with bathing girls for attention on the beaches."

16 SDN 45B17 16mm. sound version,  
about 300 feet \$11.95  
8 SLN 45B17 8mm. silent version,  
about 150 feet \$2.98



## WESTERN PACIFIC FAST FREIGHT

Here's a high speed freight train, and a most unique other business. It's the story of No. 62, The Fruit-Blocker, on its run from Oakland, Calif., to Salt Lake City. In all, all the scenes of this movie are taken in five days of actual train footage. It's the first of the Western Pacific Railroad's "The Western Pacific" to tackle the Sierra Nevada and some of the footage shot has the camera and videographer's hand. It's a most spectacular still it is, too. Our extremely interesting sequence shows the working of Centralized Traffic Control, the modern train dispatching system that permits a man at one control panel to direct trains over a 400 to 500 mile length of main line. A whiz of a film.

16 SDN 45B14 16mm. sound version,  
about 300 feet \$11.95  
8 SLN 45B14 8mm. silent version,  
about 150 feet \$2.98



## TH

A must-see Super Cine Super's 16mm film shows streamliner car with its magnificent Colorado, Mexico-Arc One of the

16 SDN about 3  
8 SLN 4 about 1

\$11.95

\$2.98



## BARNEY OLDFIELD'S RACE FOR A LIFE

The first 8mm. silent film in our Blackhawk Collector Series—a 1934 comedy produced in 1914, and containing just about everything that characterizes the slapstick comedy of those early silent days. Mabel Normand is the girl, Mack Sennett is the boy, Ford Sterling is the villain and Barney Oldfield the hero. The film does have special interest to motor fans because of Barney Oldfield and his racing car of four decades ago. And for railroad fans because of the shining Santa Fe round locomotive that appears so prominently in the film. Of its type, it's a gem of a film.

**8 SLN 10863 8mm. silent version,  
about 150 feet \$2.98**



## DAINGEROUS FEMALES

The first 16mm. sound film in our Blackhawk Collector Series—a 2-reel comedy produced in 1929 by Al Christie and originally released theatrically by Paramount. The only production Marie Dressler and Polly Moran ever made, as a team, for a company other than MGM. It's a comedy absolutely typical of the Dressler-Moran team, broad and funny. For its day the recording was excellent and the speech is completely intelligible. For what it was, and for what it is, we recommend it.

**16 SDN 118244 16mm. sound version,  
about 600 feet \$19.95**



## WHEELS A' ROLLING

Here's the film that shows the cavalcade of railroad motes from its earliest beginnings up to today. You'll see the Tom Thumb, the Best Friend of Charleston, the John Bull, the DeWitt Clinton, the Cumberland Valley, the Pennsylvania Pioneer, the Lafayette of the B. & O., the John Hancock, the C. & N. W. Pioneer, the Bowyer, W. L. Lincoln's Federal Coach, the Minnetonka, the William Crispien, the Santa Fe's Little Buttercup, one of the Burlington's migrant trains, Old 499 of the Empire State Express, the Burlington's Pioneer Zephyr of 1934—the first diesel-electric, stainless steel streamliner. All of the romance of American railroading is captured in this WHEELS A' ROLLING page-ant photograph just as it was presented at the 1948 and 1949 Chicago Railroad Fair. The commentary and the score of the present are the commentary and score of the film.

**16 SDN 107832 16mm. sound version,  
about 1,100 feet \$39.95**



## The GOLDEN ARROW

The story of one of Europe's great trains—THE GOLDEN ARROW, operated jointly by British Railways and French National Railways. The Arrow is the fastest train in the world and averages 100 miles an hour. It carries 1,000 passengers in 100 cars. The Arrow is the only train in Dover. There you transfer to the channel ferry. The Arrow, for the moment, crosses the Channel. As the dock in Calais, the French Golden Arrow, the Fleche d'Or, is awaiting the arrival of the ferry, and twenty minutes after the ferry docks it departs for its 3-hour, non-stop run to Paris. Here's a film that gives you the real flavor of Continental trains, and the countryside through which they travel.

**16 SDN 45818 16mm. sound version,  
about 300 feet \$11.95**  
**8 SLN 45818 8mm. silent version,  
about 150 feet \$2.98**

# BLACKHAWK'S EQUIPMENT MARKET

PROJECTORS • CAMERAS • RECORDERS • ACCESSORIES

The Nation's Bargain Counter for Used A-V Equipment

All equipment offered in Blackhawk's Equipment Mart is good used material — and real bargains at the prices at which it is being offered. Every item has been thoroughly checked over, cleaned and adjusted, both mechanically and electrically, before being listed.

If you are desirous of obtaining a particular make and model of projector, camera or recorder, we'll be glad to place your order on file. Then, just as soon as we get an item that meets your specifications, we'll give you first chance at it. Simply write and tell us what you want and (if you wish) approximately what you want to pay. We'll keep on the lookout for that particular machine for you.

We do not sell anything on time payments. Our terms are cash only — either in full with order or 10% deposit with order and the balance C.O.D. Our guarantee projects you. If for any reason you do not wish to retain the equipment you have ordered from us, you may return it, transportation paid, within five days after you receive it, and we'll give you full credit or refund the purchase price in full, whichever you prefer.

As we frequently have several units of the same make and model, sometimes with minor differences, and sometimes at different prices, please order by our item number as well as indicating make and model. In this way there will be no uncertainty as to exactly what unit you want.

## AMPRO 16mm. SOUND PROJECTORS

AMPRO UA 16mm. sound projector with 12" speaker, 27 watt amplifier, 750 watt projection lamp, and 2" lens. This projector operates on AC only, and has power rewind and reverse switch. Runs at sound and silent speeds, and comes complete with power cord and empty 1600' reel. Our item No. 354. Price..... **\$159.95**

AMPRO YA 16mm. sound projector with twin 8" x 7" speakers, 15 watt amplifier, 750 watt projection lamp, and 2" lens. Complete units housed in two cases. Projector in one, twin speakers in other. This projector operates on AC only, at sound or silent speeds, and has automatic rewind. Comes complete with power cord and empty 1600' reel. Our item No. 403. Price..... **\$139.95**

AMPRO COMMERCIAL 16mm. sound projector contained in one case, with 8" speaker, 15 watt amplifier capacity, 425' speaker cable, 750 watt projection lamp, and 2" lens. This projector operates on AC only, and has power rewind. Comes equipped with power cord and empty 1600' reel. Handy and compact. Our item No. 531. Price..... **\$139.95**

## MOVIE MITE 16mm. SOUND PROJECTORS

MOVIE MITE 65LD 16mm. sound projector contained in one case, with 8" speaker, 50' speaker cable, 3.7 watt amplifier, 300 watt projection lamp, power cable, and empty 1600' film reel. Operates on AC only at either sound or silent speed, and has power rewind. Our item No. 475. Price..... **\$129.95**

MOVIE MITE 16mm. sound projector with 5" speaker, 300 watt projection lamp, and 2" lens. Has 3.7 watt amplifier. This projector operates on AC-DC, and has power rewind. Comes complete with power cord and empty 1600' reel. Our item No. 541. Price..... **\$129.95**

## UNIVERSAL 16mm. SOUND PROJECTORS

UNIVERSAL P1000 16mm. sound projector contained in one case, with 8" speaker, 40' speaker cable, 750 watt projection lamp and 2" lens. Operates on AC only. An extremely popular projector for moderate-sized room requirements. Comes complete with power cord and empty 1600' reel. Our item No. 429. Price..... **\$129.95**

## FORWAY 16mm. SOUND PROJECTORS

FORWAY 16mm. sound projector complete in one case with 6" speaker, 50' speaker cable, 500 watt projection lamp, 2" lens, empty 1600' film reel, and power cord. Operates at either sound or silent speed and has power rewind. AC only. Our item No. 423. Price..... **\$139.95**

## NATCO 16mm. SOUND PROJECTORS

NATCO 5015 16mm. sound projector equipped with 35 watt amplifier, 2" speaker, 50' speaker cable, 2" projection lens and 750 watt projection lamp. Operates on AC current only, at sound and silent speeds, and has motor driven rewind. Comes complete with power cord and empty 1600' film reel. Our item No. 404. Price..... **\$149.95**

## BELL & HOWELL 16mm. SOUND PROJECTORS

BELL & HOWELL 138 16mm. sound projector contained in one case with 12" speaker, 50' speaker cable, 50 watt amplifier, 750 watt projection lamp and 2" lens. This projector operates on AC only, and has power rewind. Runs at sound speed only, and comes complete with power cord and empty 1600' reel. Our item No. 355. Price..... **\$139.95**

BELL & HOWELL 140 16mm. sound projector with 10" speaker, 50 watt projection lamp, 2" lens and 10 watt amplifier capacity. All housed in single two-piece case. Operates at sound speeds only on AC only. Has power rewind. Comes complete with power cord and empty 1600' reel. A favorite for home or classroom or small auditorium use. Our item No. 537. Price..... **\$139.95**

BELL & HOWELL 138C 16mm. sound projector with 10" speaker, 50' speaker cord, 750 watt projection lamp and 2" projection lens. This projector operates on AC only, at both sound and silent speeds, and has power rewind. Comes complete with power cord and empty 1600' reel. Our item No. 531. Price..... **\$139.95**

BELL AND HOWELL 142AB 16mm. sound projector, with 12" speaker cable, 750 watt projection lamp, 18 watt amplifier capacity. Operates at either sound or silent speed, or in reverse, and has power rewind. Comes complete with empty 1600' film reel and power cord. AC only. Our item No. 421. Price..... **\$159.95**

## VICTOR 16mm. SOUND PROJECTORS

VICTOR 23 AC 16mm. sound projector with 10" speaker, 40' speaker cable, 750 watt projection lamp, 18 watt amplifier capacity, 2" lens, empty film reel, and power cord. Operates at either sound or silent speed and has power rewind. AC only. Our item No. 453. Price..... **\$129.95**

VICTOR 36 AC-DC 16mm. sound projector with 10" speaker, 40' speaker cable, 750 watt projection lamp and 2" projection lens. Operates on AC and DC, at both sound and silent speeds. Has motor driven rewind. Comes complete with power cord and empty 1600' reel. Our item No. 508. Price..... **\$129.95**

VICTOR 25AC 16mm. sound projector with 12" speaker, 18 watt amplifier, 750 watt projection lamp, and 2" projection lens. Operates on both sound and silent speeds. Has motor driven rewind. Comes complete with power cord and empty 1600' reel. Our item No. 505. Price..... **\$129.95**

VICTOR 60B 16mm. sound projector with 10" speaker, 750 watt projection lamp, and 2" lens. This projector operates on AC only, and has power rewind and reverse switch. Runs at both sound and silent speeds, and comes complete with power cord and empty 1600' reel. Our item No. 509. Price..... **\$229.95**

VICTOR MODEL 25AC 16mm. sound projector with 10" speaker, 50' speaker cable, 750 watt projection lamp, and 2" lens. Projector operates on AC only, and has power rewind. Runs at both sound speeds and comes complete with power cord and empty 1600' reel. Our item No. 469. Price..... **\$129.95**

VICTOR 40A 16mm. sound projector with 12" speaker, 750 watt projection lamp, 45' speaker cable, and 2" projection lens. Has 5 watt amplifier capacity. AC only. Comes complete with power cord and empty 1600' film reel for home or classroom use. Our item No. 355. Price..... **\$129.95**

VICTOR 50C 16mm. sound projector with 4" x 6" oval speaker in both projector, in single case. Amplifier has 8 watt output. Projector operates on AC only, at both sound and silent speeds. Has power rewind. Comes complete with power cord and empty 1600' reel. A really up-to-date for home or small room use—light weight—convenient—and a "110 good performer!" Our item No. 530. Price..... **\$129.95**

VICTOR 40BX 16mm. sound projector with 12" speaker, 25 watt 50' speaker cord, 750 watt lamp and 2" projection lens. This projector operates on AC only, at both sound and silent speeds. Has reverse switch, and does not require power cord with power cord and empty 1600' reel. Our item No. 482. Price..... **\$129.95**

VICTOR 23AC 16mm. sound projector. Has 2" lens, 12" speaker, 750 watt projection lamp, 50' speaker cable, power cord, and empty 1600' film reel. Operates on AC only, at both sound and silent speeds, and has power rewind. Our item No. 423. Price..... **\$129.95**

VICTOR 25AC 16mm. sound projector with 12" speaker, 50' speaker cable, 750 watt projection lamp, 23 watt amplifier capacity, and 2" lens. Operates on AC only. Comes complete with power cord and empty 1600' film reel. Our item No. 540. Price..... **\$129.95**

VICTOR 40A 16mm. sound projector with 12" speaker, 50' speaker cable, 750 watt projection lamp, 12 watt amplifier capacity, 2" lens, empty film reel, and power cable. This projector operates on AC only, at sound or silent speed, or in reverse. It has power rewind. Our item No. 516. Price..... **\$129.95**

VICTOR 16mm. sound projector with 10" speaker, 50' speaker cable, 750 watt projection lamp, 18 watt amplifier capacity, 2" lens, empty film reel, and power cord. This projector operates on AC only, at either sound or silent speed, and has power rewind. Our item No. 513. Price..... **\$129.95**

U.S. School of Cinematic Arts  
 Los Angeles

### EASTMAN KODASCOPE 16mm. SOUND PROJECTORS

**EASTMAN KODASCOPE FS-10-N** 16mm. sound projector contained in one case, with 10" speaker, 10 watt amplifier capacity, 50' speaker cable, 750 watt projection lamp, and 2' lens. This projector operates on AC only, and has powered rewind. Runs at both sound and silent speeds and comes complete with power cord and empty 1600' reel. Our item No. 325 **\$169.95**

### TOWER 16mm. SOUND PROJECTORS

**TOWER 803-8401-2** 16mm. sound projector contained in one case, with 6" speaker, 40' speaker cable, 5 watt amplifier capacity, 2" lens, 750 watt projection lamp, empty 1000' film reel, and power cable. Operates at either sound or silent speed and has power rewind. AC-DC. Our item No. 484. Price **\$139.95**

### SILENT PROJECTORS

**KEYSTONE MODEL R-8** 8mm. silent projector. Holds up to 400 ft. reel of Super film. Has Wollensak 17' projection lens of high quality. Uses 500 watt projection lamp. Has thermostat for controlling speed, and tilt for ease of centering picture on screen. Our item No. 497. **\$59.95**

### USED RECORDERS

**MEISSNER PHONO-RECORDER** Model 9, contained in single luggage type carrying case. Records direct from mike or radio onto 78 r. p. m. disc, plays back its own recordings and standard 78 r. p. m. records, incorporates radio and may be used also as a P. A. system. A versatile unit of top quality offered at but a fraction of its original cost. Our item No. 478 **\$139.95**

### USED LENSES

**2 1/2" SIMPSON FLAM PROJECTION LENS** with spiral lens barrel. This is a very popular focal length lens, giving a picture about 20% smaller than the standard 2" lens at the same distance from the screen. Also **\$9.95**

### USED SCREENS

**40"x40" RADIANT DE LUXE CHAMPION TRIPOD SCREEN.** Here is America's latest priced binary screen with the quality features you'd expect in a more expensive model. Sets up quickly, easy adjustment for all screen sizes, and bright glass-beaded screen provides maximum reflection, giving you the brightest picture your projector can supply. Has heavy factory mounting and is in excellent shape. Our item EUX-18, only **\$14.95**

**40"x60" RADIANT SCREENMASTER TRIPOD SCREEN.** Radiant calls this "the world's finest projection screen". It sets up in a few seconds — light foot pressure on a release tab opens the tripod legs instantly. Screen is easily adjusted to various sizes and heights. Case is finished in distinctive blue color with chrome plated top caps and hinge bar, and is dust-proof to keep screen fabric clean when not in use. Has just been reconditioned at the factory and is just as good as new. Our item EUX-19, only **\$26.95**

**40"x40" RADIANT TRIPOD SCREEN.** Here is a quality screen at about the lowest price you'll find. It's hard, but in excellent condition. Glass-beaded, tripod legs open quickly, easily set up and adjusted. Case is finished in good looking blue color. Our item EUX-24. **\$9.95**

## Projection Lamp Sale

We have a small supply of 750 watt, 110 volt, T12 projection lamps made by Westinghouse that we can offer at a special price. These are all first quality lamps, made by one of the outstanding lamp manufacturers in the country, and normally they are priced at \$4.53 each. We can bring them to you, while our small stock lasts, **\$3.49** at the low price, each

## PROJECTION LAMPS

There's never been a projection lamp bargain like this one! 750 watt, 110 volt, T-12, medium pressure projection lamps at a saving of 1/3 from the price you usually pay. These lamps are manufactured in occupied Japan and an American testing laboratory in Japan reports their performance compares quite favorably with standard brands made in this country — they are not the cheap, inferior type of merchandise that was turned out before the war. We hope to be able to offer these lamps on a regular basis. However, our immediate stock is limited, and we may periodically run out. Therefore, to try this bargain for yourself, act in your local area now.

EN-34 750-watt projection lamp, each **\$2.98**  
12 for **35.95** Case of 25 **567.95**

## SCREENS

### DA-LITE BEADED SCREENS

We still have some screens in the sizes below from the Blackhawk stock we've advertised the last few issues. They are brand new Da-Lite Beaded Screens of recent manufacture, although not all of the items may have exactly the same finish or hardware in which Da-Lite is currently supplying the items. Here is your chance to buy nationally advertised brands, at savings of up to one-half off current list prices. Whenever you can, give us an alternate selection of size and model. We'll always send your first choice as long as we have it.

**30"x30" Da-Lite Model 8 Map-Type Wall Screen** **\$7.95**  
Regular price, \$12.00. Blackhawk's Money Saving Price.  
**37"x30" Da-Lite Challenger Tripod Screen** **\$16.95**  
Regular price, \$29.70. Blackhawk's Bargain Price.  
**37"x30" Da-Lite Versatip Tripod Screen** **\$14.95**  
Regular price, \$24.20. Blackhawk's Economy Price.  
**40"x40" Da-Lite Model 8 Map-Type Wall Screen** **\$8.95**  
Regular price, \$13.50. Blackhawk's Money-Saving Price.

### AURORA BEADED TRIPOD SCREENS

Aurora's Super Deluxe Tripod Screen is easy to set up and adjust, made from the finest Glass Beaded material to give the brightest picture, equipped with features of sturdy construction and stylish design. You'll go a long way to beat this value.

**EN-51 50"x50" Super Deluxe Tripod Screen** **\$22.95**  
Regularly \$28.50. Blackhawk's Price.  
**EN-52 45"x60" Super Deluxe Tripod Screen** **\$27.95**  
Regularly \$33.95. Blackhawk's Price.  
**EN-53 60"x60" Super Deluxe Tripod Screen** **\$32.95**  
Regularly \$39.50. Blackhawk's Price.  
**EN-54 52"x70" Super Deluxe Tripod Screen** **\$33.95**  
Regularly \$41.25. Blackhawk's Price.

### 9' x 12' CLOTH SCREEN

Here is an economical screen that will give excellent service, both outdoors and indoors. Made of heavy white cloth, linen backed, it is reinforced and fitted with grammets around all four sides, with metal "D" rings at the corners. It is thus adaptable for stretching in a frame or hanging on a wall. Folds compactly, too. Washable, and use of a good bleach will keep it light. Size is approximately 9' x 12'. While but a Blackhawk would say find a screen like this (EN-25) for only **\$17.95**

## INCOMPLETE 100' USED 16mm. SOUND LENGTHS

These incomplete 100' sound lengths of 16mm. film from feature pictures, Westerns, serials, comedies travel films, musicals, documentary subjects, sports films, and other types of subjects, have long been an extremely popular item with Blackhawk customers.

These lengths, while incomplete and start anywhere and end anywhere, are consecutive in themselves — they are not made up of short scenes spliced together. They are identified individually as to the type of subject, so there is no way to tell, all at once, for so many rolls of "Westerns," "Comedies," or any type of content. All footage is regular image transfer, and all sound is included. And all footage is in good runnable condition.

**100' lengths of black and white film:** **\$1.98**  
12 for **23.76** Case of 25 **49.75**

**100' lengths of color film:** **each \$2.49**  
Hugh M. Hejner Moving Image Archive

### OUR CUSTOMERS SAY

"I hope to do more business with your firm. You have in what business I have conducted with you, been most fair."

**obster**  
R. H. ...  
Chillicothe, Ohio

# NEW 16mm. SOUND AND SILENT FILM

NOT ALL TITLES IN THIS GROUP OF NEW SUBJECTS ARE REGULARLY KEPT IN STOCK. AT TIMES WHEN PRICES ARE NOT IN STOCK, TEN DAYS TO TWO WEEKS WILL BE REQUIRED FOR THE SHIPMENT TO BE DELIVERED TO YOU AFTER YOUR ORDER REACHES US.



## ZANE GREY CLASSICS

Released by Hollywood Film.

Length, 1- reel  
16mm. sound, regularly \$15.89  
\$17.50. Blackhawk's price  
16mm. silent, regularly \$8.59  
\$9.75. Blackhawk's price

Here are highlights in action filled and dramatic form from a group of Zane Grey stories which were either produced or originally distributed theatrically by Paramount. These are not only entertaining for what they are today - but pleasant memories of the 1930's.

### BORN TO THE WEST

with John Wayne  
16 SDN 50B35 (Sound) \$15.89  
16 SLN 50B35 (Silent) \$8.59

### HELL TOWN

with John Wayne  
16 SDN 50B30 (Sound) \$15.89  
16 SLN 50B30 (Silent) \$8.59

### THE THUNDERING HERD

with Randolph Scott  
16 SDN 50B36 (Sound) \$15.89  
16 SLN 50B36 (Silent) \$8.59

### TO THE LAST MAN

with Randolph Scott  
16 SDN 50B29 (Sound) \$15.89  
16 SLN 50B29 (Silent) \$8.59



## W. C. FIELDS COMEDIES

Released by Castle. Length, 1-reel  
16mm. sound, regularly \$16.89  
\$21.75. Blackhawk's price  
16mm. silent, regularly \$8.59  
\$9.75. Blackhawk's price

During his career in the movies, W. C. Fields was a great favorite of a great many of us. These two films, released out of two of his most popular Universal-International features, have been outstandingly popular since their release in 16mm. They're beautifully done 1-reelers, and offer Fields at his typical best.

### THE GREAT CHASE

16 SDN 10B7 (Sound) \$16.89  
16 SLN 10B7 (Silent) \$8.59

### HURRY, HURRY

16 SDN 10B13 (Sound) \$16.89  
16 SLN 10B13 (Silent) \$8.59

## FAIRY TALES

Released by Sterling. Length, 1-reel  
16mm. sound, regularly \$16.89  
\$22.50. Blackhawk's price

A series of fairy tales - some of the very best and most famous - distributed by production code Four, actors and complete, proper to children (1).

### CINDERELLA

16 SDN 40B16 (Sound) \$16.89

HANSEL AND GRETEL  
16 SDN 40B25 (Sound) \$16.89

RUMPELTILTSKIN  
16 SDN 40B20 (Sound) \$16.89

THE SLEEPING BEAUTY  
16 SDN 40B19 (Sound) \$16.89

SNOW-WHITE AND ROSE-RED  
16 SDN 40B26 (Sound) \$16.89



## ABBOTT AND COSTELLO COMEDIES

Released by Castle. Length, 1-reel  
16mm. sound, regularly \$16.89  
\$21.75. Blackhawk's price  
16mm. silent, regularly \$8.59  
\$9.75. Blackhawk's price

These Laurel films with Abbott and Costello have been edited from their feature pictures produced by Universal-International and Eagle Lion. They offer episodes in the fun-making of A. N. C. that are jam-packed with laughs, and worth screening again and again.

### FUN ON THE RUN

16 SDN 10B5 (Sound) \$16.89  
16 SLN 10B5 (Silent) \$8.59

### HIGH FLYERS

16 SDN 10B9 (Sound) \$16.89  
16 SLN 10B9 (Silent) \$8.59

### KITCHEN MECHANICS

16 SDN 10B13 (Sound) \$16.89  
16 SLN 10B13 (Silent) \$8.59

### MIDCOT CAR MANIACS

16 SDN 10B15 (Sound) \$16.89  
16 SLN 10B15 (Silent) \$8.59

### NO INDIANS, PLEASE

16 SDN 10B23 (Sound) \$16.89  
16 SLN 10B23 (Silent) \$8.59

### OYSTERS AND MUSCLES

16 SDN 10B29 (Sound) \$16.89  
16 SLN 10B29 (Silent) \$8.59

### RIO! ON ICE

16 SDN 10B32 (Sound) \$16.89  
16 SLN 10B32 (Silent) \$8.59

Released by Official. Length, 1-reel  
16mm. sound, regularly \$15.89  
\$19.75. Blackhawk's price  
16mm. silent, regularly \$8.59  
\$9.75. Blackhawk's price

### MONEY MUDDLERS

16 SDN 10B24 (Sound) \$15.89

### MUDDER AND FODDER

16 SDN 10B33 (Sound) \$15.89

### OH! MY ACHIN' TOOTH!

16 SDN 10B28 (Sound) \$15.89

### PINCH ME, PLEASE

16 SDN 10B25 (Sound) \$15.89

### ACE IN THE HOLE

16 SDN 10B31 (Sound) \$15.89



## HAL ROACH'S FAMOUS KIDS COMEDIES

Released by Official. Length, 1-reel  
16mm. sound, regularly \$15.89  
\$19.75. Blackhawk's price  
16mm. silent, regularly \$8.59  
\$9.75. Blackhawk's price

These Laurel films are the last two series of comedies made by Hal Roach as "Our Gang" comedies before he discontinued production and disposal of his rights to his registered trade mark to M-G-M. And, they're some of the best he ever made with Spunky, Stymie, Alfidia and many of the other characters of the 1935-1937 period.

### THE AWFUL TOOTH

16 SDN 10B36 (Sound) \$15.89  
16 SLN 10B36 (Silent) \$8.59

### BEAR FACTS

16 SDN 10B33 (Sound) \$15.89  
16 SLN 10B33 (Silent) \$8.59

### BORED OF EDUCATION

16 SDN 10B30 (Sound) \$15.89  
16 SLN 10B30 (Silent) \$8.59

### PAY AS YOU EXIT

16 SDN 10B30 (Sound) \$15.89  
16 SLN 10B30 (Silent) \$8.59



## WOODY WOODPECKER CARTOONS

Released by Castle. Length, 1-reel  
16mm. sound, regularly \$16.89  
\$21.75. Blackhawk's price  
16mm. silent, regularly \$8.59  
\$9.75. Blackhawk's price

Woody Woodpecker, character, star of the only one of the cartoon character series that has not only a complete collection of all the original episodes, but is normally released as the feature by Universal-International.

### ACE IN THE HOLE

16 SDN 5B2 (Sound) \$16.89  
16 SLN 5B2 (Silent) \$8.59

### DIZZY ACROBAT

16 SDN 5B27 (Sound) \$16.89  
16 SLN 5B27 (Silent) \$8.59

### RECKLESS DRIVER

16 SDN 5B42 (Sound) \$16.89  
16 SLN 5B42 (Silent) \$8.59

## SMOKED HAMS

1922 16mm. release

16 SDN 5B43 (Sound)

16 SLN 5B43 (Silent)

## SOLID IVORY

1922 16mm. release

16 SDN 5B16 (Sound)

16 SLN 5B16 (Silent)

## WELL OILED

1922 16mm. release

16 SDN 5B37 (Sound)

16 SLN 5B37 (Silent)

## WOODY PLAYS SANTA CLAUS

16 SDN 5B48A (Sound)

16 SLN 5B48A (Silent)

## WOODY THE GIANT KRAUT

16 SDN 5B47D (Sound)

16 SLN 5B47D (Silent)



## LAUREL AND HARDY COMEDIES

Released by Library Films.

Length, 1-reel

16mm. sound, regularly \$15.89

\$19.75. Blackhawk's price

16mm. silent, regularly \$8.59

\$12.00. Blackhawk's price

Laurel and Hardy are coming out today that's their best material of the 16mm. era get some of the best.

### BRATS

16 SDN 10B1 (Sound)

16 SLN 10B1 (Silent)

### COUNTY HOSPITAL

16 SDN 10B44 (Sound)

16 SLN 10B44 (Silent)

### DIZZY WORK

16 SDN 10B3 (Sound)

16 SLN 10B3 (Silent)

### THE HOOSOGW

16 SDN 10B12 (Sound)

16 SLN 10B12 (Silent)



## THE WORLD PARADE

Released by Castle. Length, 1-reel  
16mm. sound, regularly \$16.89  
\$21.75. Blackhawk's price  
16mm. silent, regularly \$8.59  
\$9.75. Blackhawk's price

Modern productions by professional studios not only offer a new world, but also offer a new world.

### AMERICA'S WONDERLANDS

16 SDN 25B1 (Sound)

16 SLN 25B1 (Silent)



<b>BALI</b>	16 SDN 25183 (Sound) \$16.89
	16 SLN 25183 (Silent) \$8.59
<b>BANIFF AND LAKE LOUISE</b>	16 SDN 25184 (Sound) \$16.89
	16 SLN 25184 (Silent) \$8.59
<b>BELLES OF THE SOUTH SEAS</b>	16 SDN 25185 (Sound) \$16.89
	16 SLN 25185 (Silent) \$8.59
<b>BERMUDA</b>	16 SDN 25186 (Sound) \$16.89
	16 SLN 25186 (Silent) \$8.59
<b>CALIFORNIA PICTURE BOOK</b>	16 SDN 25188 (Sound) \$16.89
	16 SLN 25188 (Silent) \$8.59
<b>ESCAPE IN CANADA</b>	16 SDN 25189 (Sound) \$16.89
	16 SLN 25189 (Silent) \$8.59
<b>FLORIDA HOLIDAY</b>	16 SDN 25190 (Sound) \$16.89
	16 SLN 25190 (Silent) \$8.59
<b>GLACIER NATIONAL PARK</b>	16 SDN 25191 (Sound) \$16.89
	16 SLN 25191 (Silent) \$8.59
<b>GRAND CANYON</b>	16 SDN 25192 (Sound) \$16.89
	16 SLN 25192 (Silent) \$8.59
<b>HAWAII</b>	16 SDN 25193 (Sound) \$16.89
	16 SLN 25193 (Silent) \$8.59
<b>NEW ENGLAND HOLIDAY</b>	16 SDN 25194 (Sound) \$16.89
	16 SLN 25194 (Silent) \$8.59
<b>PARIS (New 1922 16mm. release)</b>	16 SDN 25195 (Sound) \$16.89
	16 SLN 25195 (Silent) \$8.59
<b>ROMANTIC ITALY</b>	(New 1922 16mm. release)
	16 SDN 25181 (Sound) \$16.89
	16 SLN 25181 (Silent) \$8.59

<b>ROME, THE ETERNAL CITY</b>	16 SDN 25186 (Sound) \$16.89
	16 SLN 25186 (Silent) \$8.59
<b>YELLOWSTONE</b>	16 SDN 25141 (Sound) \$16.89
	16 SLN 25141 (Silent) \$8.59
<b>YOSEMITE</b>	16 SDN 25142 (Sound) \$16.89
	16 SLN 25142 (Silent) \$8.59



### ANIMAL FILMS

Released by Castle. Length, 1- reel  
16mm. sound, regularly \$16.89  
\$21.75. Blackhawk's price  
16mm. silent, regularly \$8.59  
\$9.75. Blackhawk's price  
Animal features are favorites, not only of the kids, but the entire family. This group of collectible presents animals all

the way from their native jungle habitat, to our zoo, and finally as actors. And the titles listed have been the top actors from several zoos now available.

<b>CARNIVAL AT THE ZOO</b>	16 SDN 25178 (Sound) \$16.89
	16 SLN 25178 (Silent) \$8.59
<b>THE CHIMP STEPS OUT</b>	16 SDN 25156 (Sound) \$16.89
	16 SLN 25156 (Silent) \$8.59
<b>CIRCUS AT THE ZOO</b>	16 SDN 25176 (Sound) \$16.89
	16 SLN 25176 (Silent) \$8.59
<b>HERE COMES THE CIRCUS</b>	16 SDN 25178 (Sound) \$16.89
	16 SLN 25178 (Silent) \$8.59
<b>LION-TIGER FIGHT</b>	16 SDN 25170 (Sound) \$16.89
	16 SLN 25170 (Silent) \$8.59
<b>THREE LITTLE BOYS GO CAMPING</b>	16 SDN 25185 (Sound) \$16.89
	16 SLN 25185 (Silent) \$8.59
<b>THREE LITTLE BRUINS</b>	16 SDN 25183 (Sound) \$16.89
	16 SLN 25183 (Silent) \$8.59

### CHARLIE CHAPLIN COMEDIES

Released by Official. Length, 1-reel  
16mm. sound, regularly \$15.89  
\$19.75. Blackhawk's price  
16mm. silent, regularly \$8.59  
\$9.75. Blackhawk's price  
A group of Charlie Chaplin comedies produced from 1914 to 1916 - the

period in which he was to become known as the greatest comedian in the movies, and one of the top box office figures.

<b>THE CHAMPION</b>	16 SDN 10B2 (Sound) \$15.89
	16 SLN 10B2 (Silent) \$8.59
<b>THE FACE ON THE BROOM FLOOR</b>	16 SDN 10B4 (Sound) \$15.89
	16 SLN 10B4 (Silent) \$8.59
<b>HITS CHASE</b>	16 SDN 10H10 (Sound) \$15.89
	16 SLN 10H10 (Silent) \$8.59
<b>IN THE PARK</b>	16 SDN 10B14 (Sound) \$15.89
	16 SLN 10B14 (Silent) \$8.59
<b>LAUGHING GAS</b>	16 SDN 10B56 (Sound) \$15.89
	16 SLN 10B56 (Silent) \$8.59
<b>LOVE PANGS</b>	(Just released in 16mm.)
	16 SDN 10B95 (Sound) \$15.89
	16 SLN 10B95 (Silent) \$8.59
<b>THE SPARRING PARTNER</b>	16 SDN 10B54 (Sound) \$15.89
	16 SLN 10B54 (Silent) \$8.59

Released by Hollywood Film.  
Length, 1-reel  
16mm. silent, regularly \$7.89  
\$8.75. Blackhawk's price  
5A.73. IN A CABARET  
16 SDN 10B42 (Sound) \$7.89  
16 SLN 10B42 (Silent) \$7.89  
DOUGH AND DYNAMITE  
16 SDN 10B40 (Sound) \$7.89  
16 SLN 10B40 (Silent) \$7.89  
HIS TRYSTING PLACE  
16 SDN 10B41 (Sound) \$7.89  
16 SLN 10B41 (Silent) \$7.89

# NEW 8mm. PRINTS AT A SAVING!



### WALT DISNEY CARTOONS

Released by Hollywood Film.

Length, 1-reel  
Regularly, \$2.75.  
Blackhawk's price \$2.49

A selected group of Walt Disney cartoons, almost full original length, with many of Disney's most famous characters.

<b>CHRISTMAS IN TOTLAND</b>	8 SLN 7021 \$2.49
<b>DONALD AND PLUTO</b>	8 SLN 7031 \$2.49
<b>DONALD DUCK THE FIREMAN</b>	8 SLN 7032 \$2.49
<b>MAGICIAN MICKEY</b>	8 SLN 7032 \$2.49

Regularly, \$4.25.  
Blackhawk's price \$3.49

A group of Walt Disney cartoons in their full original length, every one an Academy Award winner. And every one a real bargain for you Suno collectors.

<b>ALPINE CLIMBERS</b>	8 SLN 50485 \$3.49
<b>COUNTRY COUSIN</b>	8 SLN 50490 \$3.49
<b>MOTHER PLUTO</b>	8 SLN 50488 \$3.49

### W. C. FIELDS COMEDIES

Released by Castle. Length, 1-reel

Regularly, \$5.95.  
Blackhawk's price \$4.98

During his career in the movies, W. C. Fields was a great favorite of a great many of us. These two films, episodes out of two of his most popular Universal-International features, have been outstandingly popular since their release in 8mm. They're beautifully done 1-reelers, and offer Fields at his typical best.

<b>THE GREAT CHASE</b>	8 SLN 1007 \$4.98
<b>HURRY, HURRY</b>	8 SLN 10013 \$4.98



### GENE AUTRY WESTERNS

Released by Hollywood Film.

Length, 1-reel  
Regularly, \$4.25.  
Blackhawk's price \$3.49

<b>MYSTERY OF THE INDIAN UPRISING</b>	8 SLN 50B19 \$3.49
<b>WILD ROAN</b>	8 SLN 50B40 \$3.49



### TRAVELS

Released by Castle. Length, 1-reel

Regularly, \$5.95.  
Blackhawk's price \$4.98

Modern productions by professional cameramen showing not only the high spots of our own country, but many foreign countries as well.

<b>AMERICA'S WONDERLANDS</b>	8 SLN 25B1 \$4.98
<b>BALI</b>	8 SLN 25B3 \$4.98
<b>BELLES OF THE SOUTH SEAS</b>	8 SLN 25B5 \$4.98
<b>BERMUDA</b>	8 SLN 25B6 \$4.98
<b>ESCAPE IN CANADA</b>	8 SLN 25B14 \$4.98
<b>FLORIDA HOLIDAY</b>	8 SLN 25B10 \$4.98
<b>HAWAII</b>	8 SLN 25B12 \$4.98
<b>MEXICO</b>	8 SLN 25B28 \$4.98
<b>ROME, THE ETERNAL CITY</b>	8 SLN 25B30 \$4.98
<b>PARIS (New 1922 8mm. release)</b>	8 SLN 25B29 \$4.98
<b>ROMANTIC ITALY</b>	(New 1922 8mm. release)
	8 SLN 25B181 \$4.98
<b>YELLOWSTONE</b>	8 SLN 25B40 \$4.98
<b>YOSEMITE</b>	8 SLN 25B42 \$4.98

Released by Official. Length, 1-reel  
Regularly, \$5.95.  
Blackhawk's price \$4.98

<b>ARIZONA</b>	8 SLN 25B12 \$4.98
<b>BELGIUM</b>	8 SLN 25B193 \$4.98
<b>CALIFORNIA</b>	8 SLN 25B17 \$4.98
<b>CHICAGO</b>	8 SLN 25B183 \$4.98
<b>CONNECTICUT</b>	8 SLN 25B10 \$4.98
<b>COSTA RICA</b>	8 SLN 25B195 \$4.98
<b>CUBA</b>	8 SLN 25B196 \$4.98
<b>DISTRICT OF COLUMBIA</b>	8 SLN 25B13 \$4.98
<b>FLORIDA</b>	8 SLN 25B15 \$4.98
<b>GLACIER NATIONAL PARK</b>	8 SLN 25B192 \$4.98
<b>GRAND CANYON</b>	8 SLN 25B20 \$4.98
<b>HOLLAND</b>	8 SLN 25B202 \$4.98
<b>ILLINOIS</b>	8 SLN 25B185 \$4.98
<b>INDIANA</b>	8 SLN 25B21 \$4.98
<b>KENTUCKY</b>	8 SLN 25B24 \$4.98
<b>MAINE</b>	8 SLN 25B26 \$4.98
<b>MASSACHUSETTS</b>	8 SLN 25B27 \$4.98
<b>MEXICO</b>	8 SLN 25B205 \$4.98
<b>NEW HAMPSHIRE</b>	8 SLN 25B32 \$4.98
<b>NEW MEXICO</b>	8 SLN 25B33 \$4.98
<b>NEW YORK</b>	8 SLN 25B206 \$4.98
<b>NORWAY</b>	8 SLN 25B207 \$4.98
<b>OHIO</b>	8 SLN 25B187 \$4.98
<b>PANAMA</b>	8 SLN 25B207 \$4.98
<b>UTAH</b>	8 SLN 25B38 \$4.98
<b>VERMONT</b>	8 SLN 25B39 \$4.98
<b>WASHINGTON STATE</b>	8 SLN 25B190 \$4.98
<b>WYOMING</b>	8 SLN 25B40 \$4.98

Please order by number and title.



## ZANE GREY CLASSICS

Released by Hollywood Film.

Length, 1-reel

Regularly, \$4.25. Blackhawk's price **\$3.98**

Here are highlights in action-filled and dramatic form from a group of Zane Grey stories which were either popularized or originally distributed theatrically by Paramount. These are not only entertaining but what they are today — fun pleasant memories of the 1930's.

<b>HELL TOWN</b> with John Wayne 8 S.N. 50B30	\$3.98
<b>HERITAGE OF THE DESERT</b> with Russell Hayden 8 S.N. 50B32	\$3.98
<b>MAN OF THE FOREST</b> with Randolph Scott 8 S.N. 50B33	\$3.98
<b>THE THUNDERING HERD</b> with Randolph Scott 8 S.N. 50B34	\$3.98
<b>WAGON WHEELS</b> 8 S.N. 50B34	\$3.98

## ABBOTT AND COSTELLO COMEDIES

Released by Castle. Length, 1-reel  
Regularly, \$5.95. Blackhawk's price **\$4.98**

These 1-reel films with Abbott and Costello have been edited from their feature pictures produced by Universal-International and Eagle-Lion. They offer episodes in the fun-making of A. C. C. that are jam-packed with laughs and worth screening again and again.

<b>FUN ON THE RUN</b> 8 S.N. 10B5	\$4.98
<b>HOG FLYING</b> 8 S.N. 10B0	\$4.98
<b>KITCHEN MECHANICS</b> 8 S.N. 10B13	\$4.98
<b>MIDGET CAR MECHANICS</b> 8 S.N. 10B23	\$4.98

## ADVENTURE

Released by Sterling. Length, 1-reel  
Regularly, \$5.95. Blackhawk's price **\$4.98**

<b>BLUE WARRIORS OF THE PACIFIC</b> 8 S.N. 30B17	\$4.98
<b>FUR AND FEATHERS IN ALASKA</b> 8 S.N. 30B55	\$4.98
<b>IT'S A BIG GAME</b> 8 S.N. 30B53	\$4.98
<b>PHEASANT FEVER</b> 8 S.N. 30B71	\$4.98
<b>SALT WATER WONDERLAND</b> 8 S.N. 30B114	\$4.98
<b>THRILL RIVER</b> 8 S.N. 30B99	\$4.98
<b>WILD FOWL IN SLOW MOTION</b> 8 S.N. 30B104	\$4.98



## CHARLIE CHAPLIN COMEDIES

Released by Official. Length, 1-reel  
Regularly, \$5.95. Blackhawk's price **\$4.98**

A group of Charlie Chaplin comedies produced from 1914 to 1919 — the period in which he was to become known as the greatest comedian in the movies, and one of the top box office figures.

<b>THE CHAMPION</b> 8 S.N. 10B2	\$4.98
<b>THE FACE ON THE BARROOM FLOOR</b> 8 S.N. 10B4	\$4.98
<b>LOVE PANGS</b> (New 1952 8mm. release)	\$4.98
<b>THE SPARRING PARTNER</b> (New 1952 8mm. release)	\$4.98

Released by Hollywood Film.  
Length, 1-reel  
Regularly, \$4.25. Blackhawk's price **\$3.49**

<b>CAUGHT IN A CABARET</b> 8 S.N. 10B42	\$3.49
<b>DOUGH AND DYNAMITE</b> 8 S.N. 10B40	\$3.49



## LAUREL AND HARDY COMEDIES

Released by Library Films.  
Length, 1-reel  
Regularly, \$5.95. Blackhawk's price **\$4.98**

Laurel and Hardy are comedians of the old school, and there's nothing coming and going that's so funny as their best material of the 1930's. In these, you get some of the best.

<b>BRATS</b> 8 S.N. 10B1	\$4.98
<b>COUNTY HOSPITAL</b> 8 S.N. 10B14	\$4.98
<b>DIRTY WORK</b> 8 S.N. 10B3	\$4.98
<b>HOG WILD</b> 8 S.N. 10B11	\$4.98
<b>THE HOOSGOW</b> 8 S.N. 10B12	\$4.98



## ANIMAL FILMS

Released by Castle. Length, 1-reel  
Regularly, \$5.95. Blackhawk's price **\$4.98**

Animal pictures are favorites, not only of the kids, but the entire family. This group of subjects presents animals all the way from their native jungle habitat, to our zoo, and finally to actors. And the titles listed have been the top sellers from several decades now available.

<b>CARNIVAL AT THE ZOO</b> 8 S.N. 53B38	
<b>CIRCUS AT THE ZOO</b> 8 S.N. 53B36	
<b>CROCODILE THRILLS</b> 8 S.N. 53B13	
<b>HERE COMES THE CIRCUS</b> 8 S.N. 40B25	
<b>THREE LITTLE BRUINS GO CAM</b> 8 S.N. 53B35	
<b>THREE LITTLE BRUINS MAKE M</b> 8 S.N. 53B26	



## HAL ROACH'S FAMOUS KIDS COMEDIES

Released by Official. Length, 1-reel  
Regularly, \$5.95. Blackhawk's price **\$4.98**

These 1-reel films are the series of comedies made through an "Our Gang" comedy production, a group of ten girls to star in a trade mark to M-G-M. And some of the best, by every one. Nobby, Symone, Allala and the other characters of the 1930's.

<b>THE AWFUL TOOTH</b> 8 S.N. 10B36	
<b>BOZZE OF EDUCATION</b> 8 S.N. 10B39	
<b>HIDE AND SHREIK</b> 8 S.N. 10B16	
<b>MAIL AND FEMALE</b> 8 S.N. 10B16	
<b>TWO TOO YOUNG</b> 8 S.N. 10B34	

## FAIRY TALES

Released by Sterling. Length, 1-reel  
Regularly, \$5.95. Blackhawk's price **\$4.98**

A series of fairy tales — some very old and most famous — produced with live action cartoons, puppets or animation.

<b>CINDERELLA</b> 8 S.N. 40B16	
<b>THE SLEEPING BEAUTY</b> 8 S.N. 40B19	



# MELTON MOVIE VIEWER

THE HAND-HELD  
8mm. Viewer

## Shows:

in normal action — slow motion — still!  
year play and 50' 8mm. Kodachrome and black and white films!

all Castle Films 50' 8mm. movies!  
Simple Operation — A Child Can Load and  
Movies in Less Than a Minute!

The Melton Movie Viewer shows a full 50' 8mm. film — without reloading. No sprockets to thread. Compact. Highly ideal for home movie fans — perfect for the kids — just for the man overseas — welcomed by the shut-in.

The MELTON MOVIE VIEWER (EN-35), postpaid (films are extra), is only **\$4.98**



# USED 100' R-I SOUND MUSICAL AT NEW LOW PRICES!

YOU MAY PURCHASE ANY OF THE TITLES LISTED ON THIS PAGE  
AND CONTINUED PAGES AT THESE BARGAIN PRICES:

EACH: **99¢** ANY SIX FOR ONLY: **\$4.99**

## DANCE BANDS

- RI-101 - SWEET BUE (Lorraine Page Girls Orchestra)
- RI-106 - DARK TIE DREAM (Lorraine Page Orchestra with Martha Moore and Bill Roberts)
- RI-202 - OVERNIGHT (Shirley Byler)
- RI-302 - DON'T CRY (Vincent Lopez Orchestra with Sunny Skyles)
- RI-303 - ROMANCE (Tony Martinelli and Adele Arakian)
- RI-304 - BARNYARD BOUNCE (Will Bradley and His Orchestra)
- RI-402 - JOHNNY PEDDLER (Johnny Long and His Orchestra)
- RI-407 - THIRTY-TWO FIFTY-A MONTH (Dolly Beeson Orchestra with Jimmy Dorsey)
- RI-408 - ISN'T THAT JUST LIKE LOVE (Lydia Fran with Dave Schooler and his Orchestra)
- RI-701 - BEAT ME DADDY EIGHT TO THE BAR (Erz Gordon's Band)
- RI-704 - ANAPOLA (Erz Gordon and his Orchestra)
- RI-710 - PAVANNE (Erz Gordon's Orchestra)
- RI-1112 - ONCE OVER LIGHTLY (Lee Remick's Band with Doris Day and Jimmy Dorsey)
- RI-1116 - A SONG AND A DANCE (Hubert Friml's Orchestra with Jay Hughes and Allan Babwit)
- RI-1201 - WILLIE WILLIE, WILL YAT (Herbie Kay and his Orchestra with Jimmy Dorsey)
- RI-1202 - OH, MARIE (Tony Dorso Band)
- RI-1203 - TCHAIKOWSKIANA (Erz Gordon's Orchestra)
- RI-1204 - THE SAME OLD STORY (Ed Capone)
- RI-1280 - THERE WAS A LITTLE GIRL (Elizabeth Arden and his Orchestra)
- RI-1401 - YOU WALK BY (Doc Taylor Orchestra and Betty Jean Wright)
- RI-1402 - SWINGIN' AT A SEANCE (Johnny Long and his Orchestra)
- RI-1504 - FREKIE (Erz Gordon and his Orchestra)
- RI-2003 - ONE LOOK AT YOU (Ed Capone and his Band)
- RI-4207 - FELLA WITH A FIDDLE (Carmel Mackerye and his Orchestra)
- RI-4208 - FRAIGY CAT (Erz Gordon with Gay Sobel and his Orchestra)
- RI-4209 - YOU MADE ME LOVE YOU (Ed Capone)
- RI-4208 - WOULD'N'T YOU LIKE TO KISS MY HAND, O BABE (The Dixie Orchestra with "Reddy" Kidd and his Band)
- RI-5403 - HOP, SKIP AND JUMP (Charlie Webster and his Band)
- RI-5404 - JAMMIN' IN THE PANGRAM (Max Kintson and his Musical Men)
- RI-5408 - THAT DID IT MARIE (Tom Flanagan with Johnny McAfee and Jennie Laird)
- RI-5704 - COUNT ME IN (Charles Turley, Monica Warner, and Buddy Stewart)
- RI-5708 - THIS IS NO LAUGHING MATTER (Johnny McAfee with Ted Flo Zinn and his Orchestra)
- RI-5802 - ELEVEN THIRTY SATURDAY NIGHT (Charles Turley with his Orchestra)
- RI-5803 - I WANKA FOP ON A FIVE (Nate Fontaine and the Stevie Brothers)
- RI-5804 - JACK AND JILL (Will Bradley and his Orchestra with Leon Gardner and Terry Allen)
- RI-5811 - WHERE HAS MY LITTLE DOD GONE? (Charles Turley and his Orchestra)
- RI-6108 - ORIGIN TO ME ONLY WITH THINE EYES (Ginger Heston, Harry Harris, Russ Kellin and his Orchestra)
- RI-6206 - SOMEONE ELSE IS TAKING MY PLACE (Doris Nelson and his Orchestra)
- RI-6306 - SOMEBODY NOBODY LOVES (Charles Turley)
- RI-6307 - I'M LOOKING FOR A GUY (Doris Nelson and his Band)
- RI-6307 - FLY, FLY AND LAUREN
- RI-6305 - MA, HE'S MAKING EYES AT ME (Ted Flo Zinn and his Richard Mand)
- RI-6307 - TANGEBINE (Lloyd Brown)
- RI-6703 - LORETTA (Doris Nelson's Orchestra with Tommy Martelli, Ben Wilson, and Doris Nelson)
- RI-6801 - MY LITTLE COUSIN (Peetz Mann, Tommy Taylor with Teddy Powell and his Orchestra)
- RI-7100 - SWEETEN (Johnny Dorsey and his Orchestra)
- RI-7301 - THERE WON'T BE A SHORTAGE OF LOVE (Peetz Mann, Teddy Powell and his Orchestra)
- RI-7707 - I'M AN OLD FASHIONED GUY (Dick Robinson with Johnny Moore and his Orchestra)
- RI-3007 - MARGIE (Van Alexander and his Orchestra)
- RI-3005 - I BOOD IT (Ivee Japhan and his Orchestra)
- RI-3001 - FOR SALE (Eddie Hancock and his Orchestra)
- RI-3002 - MOONLIGHT BECOMES YOU (Eddie Hancock)
- RI-3006 - INCKENNY MEDLEY (Ray Fahney's Orchestra)
- RI-3008 - KITCHEN REVUE (Irene Ted and Phillip Tenberry)
- RI-3103 - THE SAINTS COME MARCHING IN (Doris Nelson)
- RI-3205 - WATCHA KNOW (Erz Gordon and his Band)
- RI-3206 - IT'S A NOTHING NEW (Al Deacon and his Orchestra)
- RI-3301 - GAY RIDDLE (Johnny Dorsey and his Band)
- RI-3306 - THE NIGHT WE MET IN HONOLULU (Erz Gordon and his Orchestra)
- RI-3104 - CATERPILLAR SHUFFLE (Johnny Long and his Orchestra)
- RI-3108 - TO COME BACK TO SORENTO (Al Deacon's Band)
- RI-3206 - JAVA, JIVE (Johnny Dorsey and his Orchestra)
- RI-3302 - LET'S GET AWAY FROM IT ALL (Johnny Long and his Orchestra)
- RI-3400 - DIPREY DOBBLE (Erz Gordon and his Orchestra)
- RI-3406 - LA ROBITA (Johnny Dorsey and his Orchestra)
- RI-3378 - AU REZ (Johnny Dorsey and his Orchestra)
- RI-3502 - ANVIL CHORUS (Al Deacon and his Orchestra)
- RI-3405 - A WHOLE BUNCH OF SOMETHING (Jimmy Dorsey and his Band)
- RI-3405 - CATALA (Johnny Dorsey's Orchestra)
- RI-3402 - THE LONG AND SHORT OF IT (Johnny Long and his Orchestra)

These films, identified as 100' R-I Sound Musical Films, are used in productions made originally by such producers as B.C.M. (Roosevelt, Mills), Minoco, Cameo, Screencraft and Globe for exhibition on the coin-operated machines. These machines, projecting from the rear ground-glass screens, required the photographic image reversed. Yet prints show quite acceptably on any regular film, sound projector. In only point where the reversal is usually noted in on the main and on which you may eliminate at the time you assemble your library. Over 25-years, we have sold many scores of thousands of prints, and handled satisfied customers re-order regularly.

The films listed here may be selected by individual title. Good stock hand of most of these subjects - but the listing of a few alternates is desirable. We'll never substitute unless your first choices are out. On these 100' R-I Sound Musical Films are not supplied on reels, but individual rolls.

These films are licensed for non-theatrical use only, and cannot be shown in television or theatrically.

- RI-14308 - MY BUDDY (Larry Clinton and his Orchestra)
- RI-14404 - SHE SHALL HAVE MUSIC (Earl Heston's Band)
- RI-14506 - SMILES (Larry Clinton and his Orchestra)
- RI-14604 - LONESOME ROAD (Al Deacon and his Orchestra)
- RI-14904 - ROCKABYE BABY (Curtis Cowe and his Comedy Band)
- RI-15401 - RING, BING, BING (Wings Martin)
- RI-15102 - FRAGRANT FEELING (Al Trock and his Orchestra)
- RI-17201 - DO NOTHING TILL YOU HEAR FROM ME (Johnny Mitchell)
- RI-17302 - AMOR (Billie Beane with Will Bradley's Orchestra)
- RI-17304 - I'LL BE SEEING YOU (Erz Gordon's Orchestra with Dale Belmont)
- RI-17400 - NOW COME YOU GO ME LIKE YOU DO (Will Bradley with Billie Beane)
- RI-17502 - HEED I DO (Will Bradley and his Orchestra)
- RI-17506 - I LEARNED A LESSON (Lawrence Wolf and his Orchestra)
- RI-18004 - WHEN YOU AND I WERE YOUNG MAGGIE (Will Bradley and Billie Beane)
- RI-18303 - SWINGING ON A STAR (Larry Lehman's Red Jockeys)
- RI-18803 - DANCE WITH A DOLL (George Paxton with Lisa Marrow and her Orchestra)
- RI-18811 - CLEO FROM RIO
- RI-18201 - LET ME LOVE YOU TONIGHT (Allan Dale with George Paxton his Orchestra)
- RI-19203 - SWINGING THE BLUES (Lee Remick and his Band with Joan Allen)
- RI-19401 - NEVER SAY YES (George Paxton Orchestra with Lisa Marrow)
- RI-20102 - FIZZ WUZZY (Earl Heston's Band)
- RI-21002 - NODDY KNOWS (Lawrence Wolf and his Orchestra)
- RI-21207 - IT'S GOTTA BE THIS OR THAT (Kini Connon and his Band with Joan Allen)
- RI-22002 - IBE GONZALES (Chuck Potter and his Orchestra)
- RI-23101 - IT MAY BE JELLY JANG with Dorothy York
- RI-23203 - CRY TALK AND GO LALA (Wing Taylor's Band with Carolyn Foy)
- RI-23407 - DASHFUL BULLDOG (Leroy Herman and his Band)
- RI-24001 - DON'T BE A BABY, BABY (Joe Maniac and his Orchestra, J. Underwood and Almed Hall)
- RI-25001 - SHINE ON YOUR SHOES (Ray Hester and his Orchestra)
- RI-25103 - ZOOT (Thelma White Orchestra with Almed Connor)
- RI-25101 - BOLD JIVE (Earl Heston and his Orchestra with Charles Whitty)
- RI-25102 - THE WIND (The New White Orchestra)
- RI-25103 - THE WIND (The New White Orchestra)
- RI-25104 - THE WIND (The New White Orchestra)
- RI-25105 - THE WIND (The New White Orchestra)
- RI-25106 - THE WIND (The New White Orchestra)
- RI-25107 - THE WIND (The New White Orchestra)
- RI-25108 - THE WIND (The New White Orchestra)
- RI-25109 - THE WIND (The New White Orchestra)
- RI-25110 - THE WIND (The New White Orchestra)
- RI-25111 - THE WIND (The New White Orchestra)
- RI-25112 - THE WIND (The New White Orchestra)
- RI-25113 - THE WIND (The New White Orchestra)
- RI-25114 - THE WIND (The New White Orchestra)
- RI-25115 - THE WIND (The New White Orchestra)
- RI-25116 - THE WIND (The New White Orchestra)
- RI-25117 - THE WIND (The New White Orchestra)
- RI-25118 - THE WIND (The New White Orchestra)
- RI-25119 - THE WIND (The New White Orchestra)
- RI-25120 - THE WIND (The New White Orchestra)
- RI-25121 - THE WIND (The New White Orchestra)
- RI-25122 - THE WIND (The New White Orchestra)
- RI-25123 - THE WIND (The New White Orchestra)
- RI-25124 - THE WIND (The New White Orchestra)
- RI-25125 - THE WIND (The New White Orchestra)
- RI-25126 - THE WIND (The New White Orchestra)
- RI-25127 - THE WIND (The New White Orchestra)
- RI-25128 - THE WIND (The New White Orchestra)
- RI-25129 - THE WIND (The New White Orchestra)
- RI-25130 - THE WIND (The New White Orchestra)
- RI-25131 - THE WIND (The New White Orchestra)
- RI-25132 - THE WIND (The New White Orchestra)
- RI-25133 - THE WIND (The New White Orchestra)
- RI-25134 - THE WIND (The New White Orchestra)
- RI-25135 - THE WIND (The New White Orchestra)
- RI-25136 - THE WIND (The New White Orchestra)
- RI-25137 - THE WIND (The New White Orchestra)
- RI-25138 - THE WIND (The New White Orchestra)
- RI-25139 - THE WIND (The New White Orchestra)
- RI-25140 - THE WIND (The New White Orchestra)
- RI-25141 - THE WIND (The New White Orchestra)
- RI-25142 - THE WIND (The New White Orchestra)
- RI-25143 - THE WIND (The New White Orchestra)
- RI-25144 - THE WIND (The New White Orchestra)
- RI-25145 - THE WIND (The New White Orchestra)
- RI-25146 - THE WIND (The New White Orchestra)
- RI-25147 - THE WIND (The New White Orchestra)
- RI-25148 - THE WIND (The New White Orchestra)
- RI-25149 - THE WIND (The New White Orchestra)
- RI-25150 - THE WIND (The New White Orchestra)
- RI-25151 - THE WIND (The New White Orchestra)
- RI-25152 - THE WIND (The New White Orchestra)
- RI-25153 - THE WIND (The New White Orchestra)
- RI-25154 - THE WIND (The New White Orchestra)
- RI-25155 - THE WIND (The New White Orchestra)
- RI-25156 - THE WIND (The New White Orchestra)
- RI-25157 - THE WIND (The New White Orchestra)
- RI-25158 - THE WIND (The New White Orchestra)
- RI-25159 - THE WIND (The New White Orchestra)
- RI-25160 - THE WIND (The New White Orchestra)
- RI-25161 - THE WIND (The New White Orchestra)
- RI-25162 - THE WIND (The New White Orchestra)
- RI-25163 - THE WIND (The New White Orchestra)
- RI-25164 - THE WIND (The New White Orchestra)
- RI-25165 - THE WIND (The New White Orchestra)
- RI-25166 - THE WIND (The New White Orchestra)
- RI-25167 - THE WIND (The New White Orchestra)
- RI-25168 - THE WIND (The New White Orchestra)
- RI-25169 - THE WIND (The New White Orchestra)
- RI-25170 - THE WIND (The New White Orchestra)
- RI-25171 - THE WIND (The New White Orchestra)
- RI-25172 - THE WIND (The New White Orchestra)
- RI-25173 - THE WIND (The New White Orchestra)
- RI-25174 - THE WIND (The New White Orchestra)
- RI-25175 - THE WIND (The New White Orchestra)
- RI-25176 - THE WIND (The New White Orchestra)
- RI-25177 - THE WIND (The New White Orchestra)
- RI-25178 - THE WIND (The New White Orchestra)
- RI-25179 - THE WIND (The New White Orchestra)
- RI-25180 - THE WIND (The New White Orchestra)
- RI-25181 - THE WIND (The New White Orchestra)
- RI-25182 - THE WIND (The New White Orchestra)
- RI-25183 - THE WIND (The New White Orchestra)
- RI-25184 - THE WIND (The New White Orchestra)
- RI-25185 - THE WIND (The New White Orchestra)
- RI-25186 - THE WIND (The New White Orchestra)
- RI-25187 - THE WIND (The New White Orchestra)
- RI-25188 - THE WIND (The New White Orchestra)
- RI-25189 - THE WIND (The New White Orchestra)
- RI-25190 - THE WIND (The New White Orchestra)
- RI-25191 - THE WIND (The New White Orchestra)
- RI-25192 - THE WIND (The New White Orchestra)
- RI-25193 - THE WIND (The New White Orchestra)
- RI-25194 - THE WIND (The New White Orchestra)
- RI-25195 - THE WIND (The New White Orchestra)
- RI-25196 - THE WIND (The New White Orchestra)
- RI-25197 - THE WIND (The New White Orchestra)
- RI-25198 - THE WIND (The New White Orchestra)
- RI-25199 - THE WIND (The New White Orchestra)
- RI-25200 - THE WIND (The New White Orchestra)



RI-3503 YOU APPEAL TO ME

VOCALS

- RI-183—NOW, ROW, ROW (Jay Halpern, Robert Fyval, Jr. and Orchestra, and The Six Brothers Trio)
- RI-208—(ITX)RUP BENORITA (Vincent Lopez and his Orchestra with Anne Barrett)
- RI-481—STUPID LITTLE CUPID (Philo Sufkin)
- RI-483—I KNOW SOMEBODY WHO LOVES YOU (Vinton Davis with Gary Burns)
- RI-496—THERE I GO (Jay Halpern)
- RI-616—LOVE THINKS WINTER INTO SPRING (Martha Tilson)
- RI-628—WE CAN MAKE BEAUTIFUL MUSIC TOGETHER (Jay Halpern and The Four Seasons)
- RI-912—I'M LOOKING OUT THE WINDOW (Herbie Kay and his Orchestra and The Four Seasons)
- RI-1128—TRYING APPLES ON A LILAC TREE (Alvin Karp and his Guitar with the King Sisters)
- RI-1213—YOU'RE UNFAIR TO ME (Florence Peppas)
- RI-1044—LET'S GET AWAY FROM IT ALL (Gale Storm and Johnny Downs)
- RI-1023—MAMA, I WANT A SWEETHEART (The Orioles)
- RI-1024—JUMPIN' JIVE (Gloria Jackson)
- RI-1820—HOW DID HE LOOK (Marilyn Rivera)
- RI-1821—TWO HEARTS THAT PASS IN THE NIGHT (Dick Henson with Dorelle and Andy)
- RI-1822—PLEASE TAKE A LETTER, MISS BROWN (Michael Lettice and Helen Waigan)
- RI-1823—WALKING TIGERMAN HOME (Johnny Downs and Elizabeth Lupton)
- RI-2084—I DON'T STAND A CHANCE OF A CHANCE WITH YOU (Mary Healy and George Foy)
- RI-2093—FERRY BOAT BERENADE (Wind Show)
- RI-2117—HUCKLEBERRY DUCK (The Martins)
- RI-2121—I CAN'T GET STARTED WITH YOU (Tony Martin)
- RI-2223—DO I WORRY? (Evelyn Aders)
- RI-2224—IT ALL COMES BACK TO ME NOW (Tamara with Del Carter and the Harmonies)
- RI-2228—HOW ABOUT YOU? (Gale Parker and Harry Lewis)
- RI-2301—THE NIGHT IS YOUNG AND YOU'RE SO BEAUTIFUL (Bob Bennett)
- RI-2302—THE WINE AND OIL (Mafia Front)
- RI-2303—HORN TO SWING (Louie Bellson)
- RI-2304—LET'S GET AWAY FROM IT ALL (The Martins)
- RI-2309—MEEB'S LOVE IN YOUR EYE (Donny Frazier)
- RI-2314—JOE O'NEILL, THE CYRAN HEEL (Wind Show)
- RI-2487—AT A LITTLE ROADSIDE REST (Martin Roark)
- RI-2567—JUST A LITTLE BIT SOUTH OF NORTH CAROLINA (Patricia Ellis)
- RI-2568—JAVA JAVVA (Arthur Bay with the King Sisters)
- RI-2569—THE VOLGA BOATMAN (Gerritje Nissen)
- RI-2570—HILLOLY GRAND OPERA (Gladys Wilson and Edie Cameron)
- RI-2591—KISS THE BOYS GOODBYE (Mary Healy with the Four Debutantes)
- RI-2600—YOU'RE IN LOVE WITH EVERYONE (Bernadine Hayes)
- RI-2608—ALDETTIE (The State Quartet)
- RI-2609—IT WAS WONDERFUL THIN (Hank Hannon)
- RI-3105—A LITTLE LIFE IS GOOD FOR YOU (Martha Tilson and the State Quartet)
- RI-3203—MARY GOES ROUND (The Stage Four Players)
- RI-3204—DELIGHTFUL, DIMPLED BOLLIES (Lorraine Loring)
- RI-3205—YOU APPEAL TO ME (Patricia Ellis)
- RI-3503—JOE AND CHARLIE'S COFFEE POT (Rudolf and Bala)
- RI-3504—I'M STEPPING OUT WITH A MEMORY TONIGHT (Bob Freeman)
- RI-3505—MIDSUMMOR PHRASES AGAIN (Gale Storm)
- RI-3782—CIELITO LINDO (The Four King Sisters, Alvin Bay and his Orchestra)
- RI-3806—DEAREST DARNEST I (The Martins)
- RI-3807—LET'S DREAM THIS ONE UP (Mafia Front)
- RI-3809—WAITING FOR THE ROBERT E. LEE (Dorothy Gifford)
- RI-3902—LOVE ME A LITTLE, LITTLE (Jay Halpern)
- RI-4006—ON THE CAMPUS (College Song)
- RI-4007—FIFTY THOUSAND DOLLARS (Carmen Scarlotta)
- RI-4007—MY MAN (Gloria Jackson)
- RI-4008—ON THE MALL (The Melodians)
- RI-4116—I THOUGHT ABOUT YOU (Patricia Ellis)
- RI-4117—WHY DON'T WE DO THIS MORE OFTEN (Jay Halpern)
- RI-4303—I'M GONNA SWING MY WAY TO HEAVEN (Gale Storm)
- RI-4304—I DON'T WANT TO LET THE WORLD ON FIRE (Johnny Downs)
- RI-4305—SHEPHERD BERENADE (Helen Hayes)
- RI-4481—WAIT 'TIL THE SUN SHINES TELL ME (Bob Chevalier)
- RI-4482—WAY DOWN YONDER IN NEW ORLEANS (Gale Storm)
- RI-4483—LOVE MARCHES ON (Jane Pinkney)

- RI-4506—ZING! WENT THE STRINGS OF MY HEART (Eleanor Frensch)
- RI-4706—EXACTLY LIKE YOU (Jay Halpern)
- RI-4708—THE LITTLE HOT DOG STAND (Johnny Downs and Jazz Perfect)
- RI-4800—JAZZY JOE (The Duke Brothers and Mary)
- RI-4807—THE LACRAMARICAL LADY (Jimmy Dodd)
- RI-4808—I'M JUST WILD ABOUT HARRY (Eleanor Frensch)
- RI-4907—LOVE ME AS I AM (Johnny Downs and Sugar Kane)
- RI-5002—BLEIGH-BELL BERENADE (Candy Denton)
- RI-5003—MIDNIN' MY BUSINESS (Marilyn Fontana)
- RI-5007—LAY BARCELINO (Lulu Hulsizer)
- RI-5106—SPACY SPAR-SPOKE (Mafia Front and Vince Bennett)
- RI-5108—HE PLAYS DIN BUMMY (Gale Storm and Jim Hahn)
- RI-5203—DOG! TIL JULIA FOG VA (John Fouts)
- RI-5204—LIVING, LOVING, LAUGHING (Evelyn Aders)
- RI-5252—MOONLIGHT MASQUERADE (James Neill with Stan Kamen's Orchestra)
- RI-5302—NO RONALD IN YOUR SOUL (Marilyn Fontana)
- RI-5303—SHE DON'T WANNA (Carol Brown, Warren Holt)
- RI-5304—THE BEST THINGS IN LIFE ARE FREE (Gloria Jackson)
- RI-5306—YA DARN TOOTIN', SABBRIEL (Ginger Harmon, Carol Cavallaro)
- RI-5403—I SAID NO (Lulu Hulsizer)
- RI-5502—STORY OF WEATHER (Gale Storm)
- RI-6104—TWO PAIR OF SHOES (Gale Storm and Larry Newark)
- RI-6202—KISS YOU (The Four Seasons)
- RI-6301—I DON'T WANT TO WALK WITHOUT YOU (The Lovatons)
- RI-6302—BY MY FAVORITE SONG (Lulu Hulsizer)
- RI-7008—YOU'RE SHOT IN THE ARM (David Hargre and Connie Hayes)
- RI-7103—MOONLIGHT COCKTAIL (Mafia Front and Edie Cameron with Hal Burack's Orchestra)
- RI-7202—THE CONTINENTAL (Helen Hayes)
- RI-7204—CLAP, CLAP FOR RHYTHM (Lulu Hulsizer, The Royal Waters)
- RI-7701—I SING! GOT NOBODY (Philo Sufkin)
- RI-7802—IN THE MOOD (The Martin Waters)
- RI-7804—I HEAR YOU MOODIN' (Gloria Jackson)
- RI-8003—ALL I NEED IS YOU (Gale Storm)
- RI-8005—TARD ME (Ricky Nelson, Larry Fort)
- RI-8202—WATCH THE BIRDS GO (Lulu Hulsizer)
- RI-8403—THE TREADDOR (John Bennett)
- RI-8406—SWING SHIF, SWING (Gale Storm)
- RI-8207—WELL, ALL RIGHT (Philo Sufkin)
- RI-8409—I MISS MY WATERS (Lulu Hulsizer)
- RI-8503—LOVE IS A SONG (Jane North, Don Dick Flavin and Beverly Budge)
- RI-8701—YOU'LL HAVE TO SWING IT (Jerry Degen and Jeff Ballinger)
- RI-8702—RANCHO GRANDE (Lorraine De Wood and Tim Walker)
- RI-8803—SISS BOOM BARBARA BOOM (Helen Hayes and Beary)
- RI-8804—IF I DIDN'T CARE (The Martins)
- RI-8805—THE ALPHABET SONG (Don DiFranco, Marjorie Deacon)
- RI-8807—BIBLICALS (Gloria Jackson)
- RI-8903—TENTH SYMPHONY (Bob Bennett)
- RI-8904—I LOVE RADIO COMMERCIALS (The Experts and Betty)
- RI-8906—IF YOU BUILD A BETTER MOUSETRAP (Eleanor Frensch)
- RI-9108—I WISH (Gloria Jackson)
- RI-9202—NO HUM (Gloria Jackson)
- RI-9308—MADE AT THE BEAUTY TARGET (Barbara Lane)
- RI-9309—SAY SALVADOR (Tony and Patricia)
- RI-10101—OH GALE, THE COURT PAIR (The Four Seasons)
- RI-10101—SWINGSMANIA (Helen Hayes and Gale)
- RI-10101—THAT'S THE MOON (Mia Norstrom)
- RI-10202—DIZZY NELSON BLUES (Lulu Hulsizer)
- RI-10203—NOBODY MAKES A FASS AT ME (Gloria Jackson)
- RI-10778—INGENUE BLUES (Lulu Hulsizer)
- RI-10905—RADIO PARADE (Gloria Jackson)
- RI-11002—BUT I NEVER COMES ABOUT TO MY HOUSE (Gale Storm)
- RI-11202—WHO'S YENHOO? (Lulu Hulsizer)
- RI-11508—AIR PARADE (Lulu Hulsizer)
- RI-11402—ONE LOOK AT YOU (Dick Carter)
- RI-11508—SHE'S SOMEBODY BLAMES (Wynn Murray)
- RI-11508—DOY MEETS GIRL (The Beatles and Betty White)
- RI-11604—BANK OF LOVE (The Beatles)
- RI-11725—GOTTA KEEP RBLLIN' (Bobby Vincent)
- RI-11802—SHOWDOUT MELODIES (The Martins)
- RI-11902—GLOBAL RHYTHM (The Radio Stars)
- RI-11906—LET'S TALK IT OVER (Gene Simmons and Naomi Wheat)
- RI-12006—CHICKEN! THE COP (Helen Hayes)
- RI-12108—I FEAR THY KISSES (Virginia Rose and Berge Knut)
- RI-12201—YOU ARE MY LUCKY STAR (Jack Ritter and Audrey Wagnall with the King Sisters)
- RI-12202—LOOKING BACK AT IT NOW (Jerry Lawler)
- RI-12204—YOUR DOG LOVES MY DOG (Jimmy Alexander and Ne Dixie Hannon)
- RI-12401—HOMESPUN (Jack Kelly and the Swing Sisters)
- RI-12205—HARD AS YOUR HEART (Yvonne Fowler)
- RI-12505—CUBAN PETE (Lulu Hulsizer)
- RI-12701—OH LOOK (Lulu Hulsizer and Helen O'Connell)
- RI-12706—ON TIME (Lorraine Loring)
- RI-13702—THEY'RE GOIN' TO BUILD A MONUMENT (Bergie Knut)
- RI-14102—CHOP STICKS (Johnnie Long)
- RI-14501—GLAMOUR GIRL (Gale Storm)
- RI-14802—WOO WOO (Folies Impromptu)
- RI-14806—THE MAN ON THE FERRY (The Liberty Quartet)
- RI-14906—LEAP YEAR LUNA (Wind Show)
- RI-15105—NOW (Tex Darlin)
- RI-15702—OH YOU PRETTY WOMAN (Kiki Cochran)
- RI-15802—THIS IS ROMANCE (Lee Denton, Edie Cameron and Tita Valdes)
- RI-16002—BIG MAN FROM THE SOUTH (Mafia Front)
- RI-16103—IMAGINE (Gale Storm and Doree Merrill)
- RI-16201—LADY OF THE NIGHT (Lulu Hulsizer)
- RI-16204—WHEN I AM UP (Lulu Hulsizer)
- RI-16302—I TOOK MY HORN TO A PARTY (Mafia Front)
- RI-16401—THE REASON'S THE REASON (Doree Merrill)
- RI-16501—WHY DON'T YOU HOLD HIS HAND (Lulu Hulsizer)
- RI-16502—GREEN WAVE (Lulu Hulsizer)
- RI-16503—PRINCE OF THE NIGHT (Lulu Hulsizer)
- RI-17701—EVERYBODY MY LIFE (Lulu Hulsizer)
- RI-17702—I LOVE THE NEW YORK NEW YORK (Lulu Hulsizer)
- RI-17704—I'VE GOT A HEART FILLED WITH LOVE (Lulu Hulsizer)
- RI-17801—WHO DUNNIT (W.L. Bradley's Orchestra with Billie Jean)
- RI-17902—GOING ALL TO PIECES (Lorraine Loring)
- RI-17906—BOOGIE WOOGIE UPSTAIRS (The Beatles)
- RI-18000—LOVER, ARE YOU THERE? (Marilyn Fontana)
- RI-18206—ACQUAINTANCE (Marilyn Fontana)
- RI-18302—TIE THE TIE THROUGH THE TIE (Lulu Hulsizer)
- RI-18504—SIDE BY SIDE (Lulu Hulsizer)
- RI-19004—CALL TO ARMS (Gale Storm)
- RI-19004—TIE, TIE, TIE (Lulu Hulsizer)

International Music Image Archive

RI-18001 - HOW MANY HEARTS HAVE YOU BROKEN? (Jerry Cooper and

- RI-18002 - COME WITH ME HONEY (Patix Clayton with The Jacksons)
- RI-20411 - ONE HEAVY BALL (Paul Clayton)
- RI-20410 - KITCHY KITCHY KOO (Vivian Haines and Carole Sherman)
- RI-20370 - TAKE ME IN YOUR ARMS (Glen O'Rourke)
- RI-20400 - SWEET AND LOVELY (Barry Gold)
- RI-20392 - MAGIC IS THE MOONLIGHT (Vivian Haines)
- RI-21009 - YOUNG (Laurie Johnson, Robert Johnson)
- RI-21010 - BACK IN YOUR OWN BACK YARD (Jerry Cooper)
- RI-21007 - TABBY THE CAT (John Jackson)
- RI-21020 - I'LL REMEMBER APRIL (Doris Day and Patix Gray)
- RI-21003 - TAKE IT (The Human Fraternity)
- RI-21020 - DANCE BABY DANCE (The Mai-Tones)
- RI-21056 - IDWA (Jerry Cooper)
- RI-21054 - LULLABY OF BROADWAY (The Mai-Tones)
- RI-21055 - WINKY WOODLAND (The Human Fraternity)
- RI-21061 - A KISS GOODNIGHT (The Jacksons)
- RI-22281 - JUST A LITTLE FOND AFFECTION (The Jacksons and Kirt Wood)
- RI-21017 - MAD ABOUT HER BLUES (Young Marvin and Dennis Blue)
- RI-21013 - WHAT A DIFFERENCE A DAY MAKES (Larry Brown and Carl James)
- RI-21040 - PIN MARIN (The Singing Harps)
- RI-21053 - HE BROKE MY HEART (The Milano Twins)
- RI-21070 - MELODY PARADE (Cecile Lewis)
- RI-24003 - HOT LIPS (Donny Davis)
- RI-24101 - ONE BY TWO BY THREE (Tommy Dorsey and Wanda Hickey)
- RI-24023 - SEVEN DAYS A WEEK (John Thompson and The Paragons)
- RI-24001 - COFFEE SHOP RHYTHM (The Impressions and Paul Kelly)
- RI-24003 - THE MAN WITH THE WEIRD BEARD (Dorcy Claire)
- RI-25040 - ASK MY HEART (Glen Rose)
- RI-25037 - WHAT A LONELY AFTERNOON (Earl Hood and Mary Gold)
- RI-25047 - THIS IS THE NIGHT (The Jacksons and Patricia Shee)
- RI-25001 - WHEREVER THERE'S ME, THERE'S YOU (Jerry House Orchestra with Terry Tyler)
- RI-25020 - IT'S ABOUT TO SAY GOODNIGHT (Leon Harper)
- RI-25027 - MY PIN UP GUY (The Terry Tones)
- RI-25040 - THAT'S ALL BROTHER, THAT'S ALL (The Terry Tones)
- RI-25030 - OH, OH, GEORGIE (The Terry Tones)
- RI-25040 - UNDER THE WILLOW TREE (Marvin Hare and The Paragons)
- RI-27101 - THE SOLDIER SONG (Marvin Hare and The Paragons)
- RI-27201 - HIGHLAND HARMONY (The Impressions)
- RI-27201 - OH, OH, GEORGIE (The Terry Tones)
- RI-27201 - ALL IN FAVOR SAY AYE (Marvin Hare and The Paragons)
- RI-27201 - WHEN YOUR HEAD'S IN THE CLOUDS (Johnny Thompson and Marvin Hare)
- RI-28001 - LEARNING TO SPEAK ENGLISH (The Jacksons with Eddie Johnson and his Orchestra)
- RI-28001 - BLOW THE MAN DOWN (Marvin Hare and The Paragons)

### INSTRUMENTAL GROUPS

- RI-1300 - WAYBE (The Kibboon)
- RI-2800 - MY FRATERNITY PIN (Leland Trist)
- RI-2900 - ON A SUNDAY AFTERNOON (Maxwell Grey)
- RI-3000 - THAT'S MY WEAKNESS NOW (John Kibboon)
- RI-3000 - LULLABY IN SWING (The Melodians)
- RI-3000 - SOXAS KRAPOPOI (Doris Houston and his Harmonica Band)
- RI-3000 - MUSICAL JOKE (The Mills Philharmonic)
- RI-3000 - BUGLE CALL PAR (Edward, Minnetonka and his Harmonica Band)
- RI-3000 - TIGER MAR (Walter Lantz)
- RI-14001 - SMOG SMOG BABY (Carmel Reed and the Leo Paul Trio)
- RI-14001 - HOTBY TONY (The Lido Trio and Ted York)
- RI-14001 - ONE MAN BAND (Vivian Haines)
- RI-14001 - DARK EYES (Milt Davis Trio)
- RI-20001 - PEET AND PEASANT (Milt Davis Trio)
- RI-20001 - I DON'T WANT TO LOVE YOU (The Terry Tones and Jerry Westmore)
- RI-21000 - ELEMENTS (Vivian Haines Trio)
- RI-21000 - STUFF LIKE THAT THERE (May Kalloun Trio)
- RI-21000 - EACH HOME IN INDIANA (The Westmore)
- RI-21000 - THERE MUST BE A WAY (The May Kalloun Trio)
- RI-24001 - I DON'T KNOW ENOUGH ABOUT YOU (Dinah Shore and her Band)
- RI-24001 - DINTY MCKEITH (Lionel Lincoln and The Betty Allen Trio)
- RI-24001 - BLUE WHATCHA GO (The Betty Allen Trio)
- RI-27001 - SLEER OF MARY'S FLAT (May Osborne Trio with Suzanne Green)
- RI-27001 - GEEBIE FERGIE (The Betty Allen Trio)
- RI-27001 - DANCE OF THE SPANISH UNION (Edwin Mapstone Trio)

### DANCES

- RI-1301 - A FELLER WHO PLAYS IN A BAND (Glen Miller with Will Osborne and his Band)
- RI-1301 - POEME (Charles and Paul and the Cammie Gie)
- RI-1700 - I KNEW IT WOULD BE THIS WAY (Charlie and Fing)
- RI-1800 - DID ANYONE CALL (Charles and Dick Hagar)
- RI-4001 - THAT'S FOR ME (Beatty Roberts)
- RI-4001 - OUTLINE OF JITTERBO HISTORY (Walter's Lando Hoppers)
- RI-4001 - TICA TI - TICA TA (Ginger Harmon) with the Messer Brothers)
- RI-7100 - BLOW, GABRIEL, BLOW (Wynn Morris with Nino and Lenora)
- RI-7500 - LAMPFLIGHTER'S BENEFACTOR
- RI-7600 - BABALU (Carmelita Mira and Annalita)
- RI-10000 - RIP TIE (Vivian Haines)
- RI-10000 - THE HEATS ON AGAIN (The Three Heat Waves)
- RI-1100 - THE DAGGER DANCE (Vivian Haines)
- RI-1200 - CHINESE FANTASY (Dorothy's Domestic)
- RI-1200 - FLYING FEET (Bila Rios, Marjorie and Anita Zambry)
- RI-1500 - M. LINDA ARNO (The Victoria and Lullita Angels)
- RI-14001 - HOTBY SWING (Earl Hood)
- RI-1500 - JUMPING BEAN (Isabelle)
- RI-16001 - ABOVE HER BOOGIE (Doris Reed and Jack Hartz)
- RI-17001 - SOMBRERITO MIA (Carmelita)
- RI-18001 - LADY WONDERFUL (Kenneth Buffett)
- RI-19001 - DANCE IMPRESSIONS (Dorothy Davis)
- RI-21001 - WHEN AUNT MINNIE PLAYS MINUET IN G.

### VAUDEVILLE AND VARIETY

- RI-2300 - A TWIST OF THE WHIST (Grace McDonald, Welby Adams)
- RI-6100 - FRANKIE AND JOHNNY (Stratford Jay David with Mollie and Ed)
- RI-7100 - THE FERRIS WHEEL (Budd Hauer and Lorraine Kline)
- RI-7200 - BY TWELVE EIGHT (Al Johnson, Doug and Frank Howard)
- RI-8000 - AWEA WALTZ (Otha Barth)
- RI-9000 - SWEET UNION TIME (Dorothy Plater)
- RI-9000 - DANCING DOLLS (Dorothy Plater and his dancing puppets)
- RI-10000 - OPERATIC RHYTHM (Three Heat Waves)
- RI-10900 - GUESS WHO? (Arthur Horne)
- RI-11000 - BEING IS BELIEVING (Arthur Horne)
- RI-11000 - DUTY TEACHER (The Jacksons)
- RI-11000 - SWINGEROO CIRCUS (The Main and Kirtie Twins with the Jacksons)
- RI-12000 - INTERNATIONAL REVIEW (Musical Tunes)
- RI-14001 - ZYLOPHONIA (Harry Brown)
- RI-14001 - PUTTING ON THE RITZ (The Jacksons)
- RI-15000 - BOOMERANG (Harry Brown)
- RI-18000 - ROMEO ROBIN (Arthur)
- RI-21000 - IN THE GLAMING (Leo J. Rosten)
- RI-23000 - AQUARIUS (Leo and Jay Fitzsimmons)

### SEPIA VOCALS

- RI-3200 - RIDE, RIDE, RIDE (The Chantones)
- RI-3200 - WARR, WARR, THE LARKS (The Deep River Boys)
- RI-8000 - PECKIN' (The Chantones)
- RI-10400 - WILLIE, WILLIE (Ben Manning and Belle Beuster)
- RI-11200 - WALLEE BENEFACTOR (Lionel Lincoln with Nina Mae Harris)
- RI-11200 - SWANEE BRILES (The Jacksons)
- RI-11200 - MEETIN' TIME (The Radio Arvo)
- RI-11800 - ROCK PARTY REVELS (Bila Rios and Ann Allerton)
- RI-11800 - BACKSTAGE BLUES (Lionel Allerton)
- RI-12000 - BETTY WAITIN' (George Washington Brown)
- RI-12100 - GIMMIE BROWN (Isham Jones)
- RI-12000 - 8000-NIGHT ALL (Arthur Taylor, Pianist and Vocalist)
- RI-14000 - GOD'S HEAVEN (George Washington Brown)
- RI-12000 - HIT THAT JIVE JACK (The Musical Mainline)
- RI-13000 - KEEP SMILING (The Impressions)
- RI-14000 - BABY, DON'T YOU CRY (Warren Evans)
- RI-14000 - IF YOU TREAT ME TO A HAIR (The Chantones)
- RI-14000 - GIT IT (Paterson and Jackson)
- RI-16000 - LOW DOWN DOG (Marilyn Lee Lewis)
- RI-16000 - EVERETT DAY (The Jacksons) - IN HARLEM (Hilkie Hunkin' Hunters)
- RI-16000 - HEY LAWDY MAMA (Bila Rios) with Leon Stinson)
- RI-16000 - BINKA TINKA MAN (Hilkie Hunkin' Wood)
- RI-17200 - DINAH (The Jacksons)
- RI-17000 - I'M TIRED (Agnes and Ethelville)
- RI-18100 - I LIKE IT CAUSE I LOVE IT (The New Cadillac)
- RI-18000 - MARY HAD A LITTLE LAMB (The Four Peppers)
- RI-18000 - CHA-CHIN-AN (The Lido Four Quartette)
- RI-18000 - AIN'T SHE PRETTY (The Four Peppers)
- RI-19400 - LOVE GROWS ON A WHITE OAK TREE (Lido Four Quartette)
- RI-19000 - CAN'T SEE FEEL LOOKIN' (The Jacksons)
- RI-20000 - GUY BONES (Doris Houston and her Band)
- RI-20000 - BIGOLETTO (The Jacksons and Frank)
- RI-21000 - FARE THEE WELL (The Jacksons and Frank)
- RI-27000 - CATS CAN'T DANCE (Marilyn Lee)
- RI-27000 - DR-HUM (The Jacksons and the Cousins)
- RI-27000 - IT'S ME, OH LORD (John Kibboon)
- RI-28000 - "FIVE SALTED PEANUTS" (The Cousins and the Cousins)
- RI-28000 - WE'RE STEPPING OUT TONIGHT (John Kibboon)
- RI-28000 - SCOTCH BROOM (The Cousins)
- RI-30000 - YA FINE AND HEATHY THING (Linda Barber)
- RI-30000 - I HAD A DREAM (John and George)
- RI-30000 - JOSEPH AND HIS BROTHERS (John Kibboon)
- RI-30000 - MR. JAYLSON FROM JACKSONVILLE (Four Harmonies)
- RI-30000 - DIXIE RHYTHM (Earl Hood)
- RI-30000 - TAKE EVERYTHING (The Three Peppers)
- RI-30000 - KENDER (Earl Hood, Ralph and Dorella)
- RI-30000 - BIG FAT BUTTERFLY (Earl Hood)
- RI-30000 - I WON'T (Lionel Lee)
- RI-480 - YOU CAN'T FEEL ABOUT LOVE (Imogene Edwards)
- RI-500 - I-BOB-O-LEE-BOP (An John Trio)
- RI-2200 - BABY, ARE YOU RIDIN' (Mildred Reed and The Four Tones)
- RI-2500 - SMO HAD A WONDERFUL TIME (Marvin Hare and his Orchestra)
- RI-2500 - WAND DUNIT TO WOND (John Kibboon)

### SEPIA DANCES

- RI-3800 - A ZOOT SUIT (Dorothy Quadrize and Paul Wynn)
- RI-5100 - SPIRIT OF BOOGIE WOOGIE (Bila Rios, Lenora and Barbara Brown)
- RI-8000 - JIVE COMES TO THE JUNGLE (John May-Jones)
- RI-2000 - HARLEM HOTCHA (Mollie G'Heule)

### SEPIA DANCE BANDS

- RI-9000 - HOT IN THE GURVE (Glen Miller and his Orchestra)
- RI-9000 - HOT IN THE GURVE (Glen Miller and his Orchestra)
- RI-9000 - HOT IN THE GURVE (Glen Miller and his Orchestra)
- RI-21000 - FOG A LITTLE BALLYHOO (The Jacksons)
- RI-22000 - LADY LADY (The Jacksons)
- RI-22000 - REMARKABLE (The Jacksons)
- RI-27000 - B. B. BOOGIE WOOGIE (The Jacksons)
- RI-28000 - CRVIN' AND SINGIN' THE BLUES (Dorothy Barber)
- RI-30000 - EIGHTY-EIGHT REASONS WHY (Bela Rios)
- RI-30000 - DON'T BE LATE (Earl Hood's Orchestra)
- RI-30000 - RHYTHM MAD (Musical Tunes)
- RI-42000 - SANDIN' JOE (Linda Barber and his Orchestra)
- RI-54000 - WAND A MAN (Lionel Lincoln and his Orchestra with Anita)
- RI-5000 - BROADWAY (Earl Hood and his Orchestra)
- RI-23000 - MISERABLE (Earl Hood and his Orchestra)



