

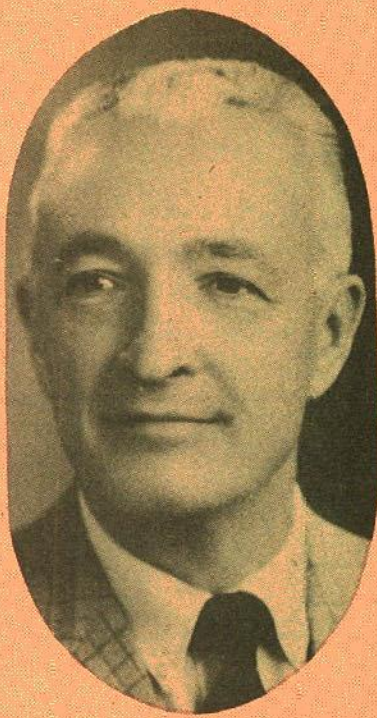


WORLD'S GREATEST SELECTION OF THINGS TO SHOW

49th Anniversary Special



Kent D. Eastin



Martin D. Phelan

Blackhawk Films can be said to have originated in the basement of Kent Eastin's parents' home in Galesburg, Illinois, in 1927.

When the company started business in 1927, its area of activity was the making of local film ads for theaters (merchant ads, a crude form of television like commercials of today), the filming of local news events for local theater newsreels, and the buying and selling of out dated independent theatrical film prints in 35mm, which was cut up and sold in small rolls for the toy projectors of the day. When 16mm sound came into being in 1934, we started building a rental library and the rental business was from then on our major activity until it was discontinued — under the impact of television — in 1957.

The company moved to a store front location in Davenport, Iowa in 1935 and then to an office building in one of Davenport's well-known business locations in 1937.

Kent Eastin and Marty Phelan first met through the courtesy of a mutual friend who was employed (as was Marty) at Montgomery Wards mail order house in Chicago.

Then came World War II and Lieutenant and Mrs. Phelan were ordered to duty at the Rock Island Arsenal — which is in the middle of the Mississippi River adjacent to Davenport, Iowa. The only people they knew in the community were Jane and Kent Eastin. The Eastins were hospitable and courteous and their friendship ripened.

As a result, in 1947 Phelan left the big corporation and the big city

and joined with then Eastin Pictures Company. With a background in direct mail and management, it was only natural that he would assume responsibility toward the business side of the then developing company.

In 1952 Blackhawk moved to a two-story business building in Davenport having about 8,000 square feet. Also, in 1952, came the introduction of Blackhawk's first releases of its own — in both 8mm and 16mm.

Then in 1957 Blackhawk purchased its present location, a roughly 30,000 square foot building, two floors, basement and sub-basement that began life in 1857 as the Eagle Brewery, Davenport's first. While two beer cellars make up the sub-basement, for readers of Blackhawk's bulletin who may also be beer drinkers, there is not a trace! Between the time the building started as a brewery and today, it was for many years occupied by a pearl button manufacturer, then was used as a warehouse by a furniture distributor, then as a television warehouse by RCA Victor, which is where Blackhawk came in. It now bears no resemblance to a brewery, its fully air-conditioned, fully sprinklered, fully modernized, and complete with the Blackhawk family ready to serve you.

As we said earlier, rental services faded out in 1957 but the sort of things for which Blackhawk is famous today was just beginning, and we now invite you to celebrate our 49th anniversary with us. Inside are some old friends, some old, old friends (some now offered with their sound track that were not available in 8mm when they were in previous release) and all at special low prices.

COPYRIGHT © 1976 BLACKHAWK FILMS, INC.

PARDON US

(1931)

starring LAUREL & HARDY



Stan and Ollie are making their own "home brew" during prohibition and by mistake try to sell their wares to a policeman! The boys wind up in prison with the comical likes of Charlie Hall and tough Walter Long, as "The Tiger". Other Hal Roach notables include Jimmy Finlayson as the prison's schoolteacher, Tiny Sanford as a guard, Wilfred Lucas as the warden and June Marlowe as the warden's daughter. Some key moments find Laurel & Hardy dressed in black-face in an escape, but only to get caught again when they try to fix the warden's car. In the end the boys bungle Long's escape plan that makes World War I look like a skirmish. Many good laughs from the days when good tidbits of comedy were new to the screen!

830-02-1388A, Super 8 magnetic sound, dialogue 56 min., 3-lbs Regularly \$75.98 Sale Price \$59.77

640-02-1391A, 16mm optical sound, dialogue 56 min., 6-lbs Regularly \$159.98 Sale Price \$127.77

LAUREL AND HARDY

WATS LINE — ORDERS ONLY! OPEN ON A 24-HOUR BASIS: SEVEN DAYS A WEEK. 800 — 553-1163 (Not Available To Iowa Residents)
SELLING PRICES IN THIS BULLETIN ARE GUARANTEED ONLY UNTIL MAY 31, 1976



GOING BYE BYE

starring LAUREL & HARDY with
MAE BUSCH and WALTER LONG

Toughie Walter Long gets a life sentence on evidence presented by Stan and Ollie. As sentence is about to be pronounced, Long overhears Stan exclaim, "He ought to be hung!" — and Long vows no bars can hold him! He escapes!

(1934)

880-02-1295A, Super 8 magnetic sound, dialogue 22 min., 14-ozs. Regularly \$32.98..... Sale Price \$25.77
640-02-1295A, 16mm optical sound, dialogue 22 min., 3-lbs. Regularly \$59.98..... Sale Price \$47.77



(1935)

THE FIXER UPPERS

starring LAUREL & HARDY with
CHARLES MIDDLETON, MAE
BUSCH and ARTHUR HOUSMAN

Stan and Ollie are greeting card salesmen. Ollie designs them; Stan writes the verse. At one apartment they are met by tearful Mae Busch, whose artist husband is so wrapped up in his work that she has become "a neglected wife." The boys volunteer to make her husband jealous... with great success!

810-02-2150A, Standard 8mm, 400-feet, 14-ozs. Regularly \$19.98..... Sale Price \$15.77
860-02-2150A, Super 8, 450-feet, 14-ozs. Regularly \$19.98..... Sale Price \$15.77
880-02-1319A, Super 8 magnetic sound, dialogue 21 min., 14-ozs. Regularly \$32.98..... Sale Price \$25.77
640-02-1319A, 16mm optical sound, dialogue 21 min., 3-lbs. Regularly \$59.98..... Sale Price \$47.77

STAN LAUREL OLIVER HARDY Comedy SALE

License Notice! These prints are licensed for nontheatrical use, home use and non-theatrical closed circuit television in the United States military and government personnel at their A.P.O. and F.P.O. addresses. For any other use, a license must be obtained from Hal Roach Studios, Inc. All territorial rights except the United States and Canada are reserved to Hal Roach Studios, Inc.



(1929)

810-02-2141A, Standard 8mm, 300-feet, 14-ozs. Regularly \$15.98..... Sale Price \$12.77
860-02-2141A, Super 8, 325-feet, 14-ozs. Regularly \$15.98..... Sale Price \$12.77
880-02-1317A, Super 8 magnetic sound, dialogue 21 min., 14-ozs. Regularly \$32.98..... Sale Price \$25.77
640-02-1317A, 16mm optical sound, dialogue 21 min., 3-lbs. Regularly \$59.98..... Sale Price \$47.77

PERFECT DAY

starring LAUREL & HARDY with
EDGAR KENNEDY

The Hardy's and the Laurel's; together with Ollie's brother-in-law, Edgar Kennedy, are preparing for a Sunday outing. Edgar is suffering from the gout. Can't you imagine the comic possibilities when coupled with a car that won't run and tires that go flat?



(1931)

ONE GOOD TURN

starring LAUREL & HARDY with
BILLY GILBERT, MARY CARR and
SNUB POLLARD

Off to see America in their Model T, Stan and Ollie stop for a handout and overhear what they think is a threat to foreclose the mortgage on a dear old lady. They then attempt to sell their car for her benefit, only to find they have overheard a rehearsal of Community Players!

810-02-1082A, Standard 8mm, 350-feet, 14-ozs. Regularly \$17.98..... Sale Price \$13.77
860-02-1082A, Super 8, 400-feet, 14-ozs. Regularly \$17.98..... Sale Price \$13.77
880-02-1325A, Super 8 magnetic sound, dialogue 22 min., 1-lb. Regularly \$32.98..... Sale Price \$25.77
640-02-1325A, 16mm optical sound, dialogue 22 min., 3-lbs. Regularly \$59.98..... Sale Price \$47.77



(1930)

ANOTHER FINE MESS

starring LAUREL & HARDY with
THELMA TODD and JAMES
FINLAYSON

From park bench to mansion — via basement door with cops in hot pursuit — with Ollie taking over as master of the house and Stan playing Hives, the butler, and doubling as the butler's twin sister Agnes, the maid!

810-02-2152A, Standard 8mm, 500 feet, 2-lbs. Regularly \$24.98..... Sale Price \$19.77
860-02-2152A, Super 8, 575 feet, 2-lbs. Regularly \$24.98..... Sale Price \$19.77
880-02-1371A, Super 8 magnetic sound, dialogue 29 min., 2-lbs. Regularly \$49.98..... Sale Price \$39.77
640-02-1371A, 16mm optical sound, dialogue 29 min., 4-lbs. Regularly \$89.98..... Sale Price \$71.77



(1930)

THE LAUREL-HARDY MURDER CASE

starring LAUREL & HARDY with
TINY SANFORD

A creepy "old house" chiller, typical of the mysteries of the 1920's. Stan and Ollie are in the midst of everything, all because Ollie gets the idea that Stanley is the long lost heir of the late tycoon, Ebenezer Laurel. The police think that it was murder, and all heirs are suspects!

810-02-1653A, Standard 8mm, 500-feet, 14-ozs. Regularly \$20.98..... Sale Price \$16.77
860-02-1653A, Super 8, 525-feet, 1-lb. Regularly \$20.98..... Sale Price \$16.77
880-02-1957A, Super 8 magnetic sound, dialogue 28 min., 2-lbs. Regularly \$48.98..... Sale Price \$38.77
640-02-1957A, 16mm optical sound, dialogue 28 min., 4-lbs. Regularly \$89.98..... Sale Price \$71.77



(1933)

SONS OF THE DESERT

starring LAUREL & HARDY with
CHARLEY CHASE and MAE
BUSCH

Generally rates as the best of all Laurel and Hardy features, this story has the boys sneaking away from their wives to attend the national convention of "The Sons of the Desert!" New print negatives from prime quality pre-print material have been made and the sound track has been completely re-recorded to give the best quality reproduction!

880-02-1389A, Super 8 magnetic sound, dialogue 66 min., 3-lbs. Regularly \$81.98..... Sale Price \$64.77
640-02-1389A, 16mm optical sound, dialogue 66 min., 8-lbs. Regularly \$159.98..... Sale Price \$127.77



(1929)

THE HOOSE-GOW

starring LAUREL & HARDY with
JIMMY FINLAYSON and TINY
SANFORD

On a prison work detail, Stan and Ollie foul up an inspection by the Governor, Jimmy Finlayson. When Ollie's pick punctures the radiator of the governor's auto, Stan fills it with uncooked rice to stop the water from leaking. The end result is a funny rice throwing melee!

880-02-1336A, Super 8 magnetic sound, dialogue 21 min., 1-lb. Regularly \$32.98..... Sale Price \$25.77
640-02-1336A, 16mm optical sound, dialogue 21 min., 3-lbs. Regularly \$59.98..... Sale Price \$47.77



NOW WE'LL TELL ONE

starring CHARLEY CHASE with
MURIEL EVANS

Here is a funny Charley Chase comedy in which bashful young Charley is transformed into an aggressive go-getter because of an electric belt developed by a wacky inventor. Acting as the absolutely confident suitor, he chases Muriel and bests a gang of thugs.

(1933)

880-03-1670A, Super 8 magnetic sound, dialogue 19 min., 14-ozs. Regularly \$32.98..... Sale Price \$25.77
640-03-1670A, 16mm optical sound, dialogue 19 min., 3-lbs. Regularly \$54.98..... Sale Price \$43.77



DOUGH & DYNAMITE

starring CHARLIE CHAPLIN with
CHESTER CONKLIN and
CHARLEY CHASE

The baker's strike is on — but how long can it last with Charlie and Chester as two waiters turned pastry cooks? This comedy proved to be one of Chaplin's most popular Keystone Comedies.

(1914)

810-04-0971A, Standard 8mm, 425 feet, 14-ozs. Regularly \$18.98..... Sale Price \$14.77
860-04-0971A, Super 8, 475 feet, 14-ozs. Regularly \$18.98..... Sale Price \$14.77
620-04-0971A(S), 16mm silent, 850 feet, 3-lbs. Regularly \$54.98..... Sale Price \$43.77



(1925)

HIS WOODEN WEDDING

starring CHARLEY CHASE

Approaching the altar on his wedding day, Charley receives an anonymous message from his rival suitor: "Your bride has a wooden leg." Looking into the future (1934!) he visualizes his hoped-for family of four children all hobbling on wooden legs!

810-03-2034A, Standard 8mm, 400 feet, 14-ozs. Regularly \$16.98..... Sale Price \$12.77
860-03-2034A, Super 8, 450 feet, 14-ozs. Regularly \$16.98..... Sale Price \$12.77
880-03-2034A, Super 8 magnetic sound, music 22 min., 14-ozs. Regularly \$32.98..... Sale Price \$25.77
640-03-2034A(S), 16mm optical sound, music 22 min., 3-lbs. Regularly \$73.98..... Sale Price \$58.77



Really Save!

Comedies and Comics

- Standard 8
- Super 8
- 16mm

MORE COMEDIES ON PAGE 6!



(1914)

THE STAR BOARDER

starring CHARLIE CHAPLIN with
EDGAR KENNEDY

In a boardinghouse, Charlie is the favorite of the landlord's wife. The other male boarders dislike him and decide to frighten him. This comedy was Chaplin's ninth for Keystone and contains some great comic sequences.

810-04-0995A, Standard 8mm, 200 feet, 11-ozs. Regularly \$8.98..... Sale Price \$6.77
860-04-0995A, Super 8, 225 feet, 11-ozs. Regularly \$8.98..... Sale Price \$6.77
620-04-0995A(S), 16mm silent, 400 feet, 2-lbs. Regularly \$34.98..... Sale Price \$27.77



(1914)

THE ROUNDERS

starring CHARLIE CHAPLIN with
FATTY ARBUCKLE and
CHARLEY CHASE

Charlie and neighbor Fatty arrive home tipsy and are met by their irate wives. Such a loud fuss ensues across the hall that Charlie's wife sends him to stop the mayhem. Soon everyone is involved in the fracas while the boys simply slip away.

810-04-1810A, Standard 8mm, 175 feet, 11-ozs. Regularly \$8.98..... Sale Price \$6.77
860-04-1810A, Super 8, 200 feet, 11-ozs. Regularly \$8.98..... Sale Price \$6.77
620-04-1810A, 16mm silent, 350 feet, 2-lbs. Regularly \$34.98..... Sale Price \$27.77



(1926)

SATURDAY AFTERNOON

starring HARRY LANGDON with
VERNON DENT

"Just a crumb from the sponge cake of life", Harry gave one of his finest performances in this comedy when his friend from the shop, Vernon, induces him to step out on his domineering wife for just a little fun!

810-21-0961A, Standard 8mm, 525 feet, 1-lb. Regularly \$24.98..... Sale Price \$19.77
860-21-0961A, Super 8, 600 feet, 1-lb. Regularly \$24.98..... Sale Price \$19.77
620-21-0961A, 16mm silent, 1050 feet, 4-lbs. Regularly \$84.98..... Sale Price \$67.77
640-21-1985A(S), 16mm optical sound, music 12 min., 2-lbs. Regularly \$34.98..... Sale Price \$27.77

BLACKHAWK'S TITLE TYPES

It's no accident that so many of Blackhawk's titles have the authentic flavor of the period in which the films were released, for we have the unique ability to completely reconstruct missing captions. This all comes about because, over the years, we have been able to induce American Type Founders to take out of storage many sets of matrices that for many years have been on their inactive list. The matrices were faces frequently used by film-makers of the teens and twenties for their captions. ATF has also cooperated with us — as has the Smithsonian Institution — in drawing back on a temporary basis from that archive the original matrices of some faces that were particularly designed for setting movie sub-titles some fifty or sixty years ago. This is just one of the little extras that you get in silent productions coming from Blackhawk Films!

Use Your BankAmericard, Master Charge or Blackhawk Charge

License Notice! These prints are licensed for nontheatrical use, home use and non-theatrical closed circuit television in the United States military and government personnel at their A.P.O. and F.P.O. addresses. For any other use, a license must be obtained from Hal Roach Studios, Inc. All territorial rights except the United States and Canada are reserved to Hal Roach Studios, Inc.

LITTLE RASCALS

(1937)



Production © Hal Roach Studios, Inc. (1937)

FRAMING YOUTH

starring
**SPANKY, ALFALFA, DARLA, BUCKWHEAT
and PORKY**

Crooner Alfalfa is all set to win a radio amateur contest, until Butch has other ideas. Butch threatens Alfalfa's manager, Spanky with violence if Alfalfa appears. When Spanky realizes that friendship is more important than a couple of black eyes, the gang rushes their crooner to the radio station.

880-05-1456A, Super 8 magnetic sound, dialogue 11 min., 11-ozs. (Regularly \$16.98) NOW ONLY.....\$12.77
640-05-1456A, 16mm optical sound, dialogue 11 min., 14-ozs., (Regularly \$34.98) NOW ONLY.....\$27.77

PRICES SLASHED!!!
BUY!!!

(1935)



Production © Hal Roach Studios, Inc. (1935)

SPRUCIN' UP

starring
**SPANKY, ALFALFA, SCOTTY
and BUCKWHEAT**

When the truant officer moves into the "Gang's" neighborhood, everyone tries to get friendly with his daughter. What was supposed to be a romantic visit for Spanky and Alfalfa, turns out to be a contest of strength. And, the boys don't know that their new girlfriend already has a boyfriend.

880-05-1570A, Super 8 magnetic sound, dialogue 17 min., 14-ozs. (Regularly \$32.98) NOW ONLY.....\$25.77
640-05-1570A, 16mm optical sound, dialogue 17 min., 3-lbs. (Regularly \$59.98) NOW ONLY.....\$47.77

SHIVER MY TIMBERS

starring **STYMIE, WHEEZER,
DOROTHY and JUNE
MARLOWE**

The "Gang" is playing hooky again; they're down at the docks listening to more wild windjammer stories told by a salty old sea captain (Billy Gilbert). These truancies are upsetting Miss Crabtree, their teacher, who seeks out the captain to teach the boys a lesson... with pirates and treasure seekers!



Production © Hal Roach Studios, Inc. (1931)

(1931)

880-05-1579A, Super 8 magnetic sound, dialogue 21 min., 14-ozs. (Regularly \$32.98) NOW ONLY.....\$25.77
640-05-1579A, 16mm optical sound, dialogue 21 min., 3-lbs. (Regularly \$59.98) NOW ONLY.....\$47.77

NIGHT 'N' GALES

starring **SPANKY, ALFALFA,
DARLA, BUCKWHEAT and
PORKY**

The "Gang's" singing is getting to Darla's father (Johnny Arthur), and is he happy when it is time for the boys to go home. But a storm intervenes, and they wind up spending the night in Mr. Hood's bedroom.



Production © Hal Roach Studios, Inc. (1937)

(1937)

880-05-1585A, Super 8 magnetic sound, dialogue 11 min., 11-ozs. (Regularly \$16.98) NOW ONLY.....\$12.77
640-05-1585A, 16mm optical sound, dialogue 11 min., 2-lbs. (Regularly \$34.98) NOW ONLY.....\$27.77

WILD POSES

starring **SPANKY, STYMIE,
TOMMY BOND with FRANKLIN
PANGBORN, EMERSON TRACY
and GAY SEABROOK**

Spanky balks at having his picture taken by studio photographer (Franklin Pangborn), and with the help of the "Gang" wreck the man's nerves plus Spanky's parents' patience! Laurel and Hardy make a gag appearance as babies.



Production © Hal Roach Studios, Inc. (1933)

(1933)

880-05-1589A, Super 8 magnetic sound, dialogue 19 min., 14-ozs. (Regularly \$32.98) NOW ONLY.....\$25.77
640-05-1589A, 16mm optical sound, dialogue 19 min., 3-lbs. (Regularly \$59.98) NOW ONLY.....\$47.77

CANNED FISHING

starring **SPANKY, ALFALFA,
BUCKWHEAT and PORKY**

Spanky and Alfalfa's plans to play hooky are foiled when Spanky's wise mother has them babysit with Junior. Things really go wrong when Junior locks his babysitters in a heat bath and the hot bulbs ignite the fire-crackers in Alfalfa's pocket.



Production © Hal Roach Studios, Inc. (1936)

(1936)

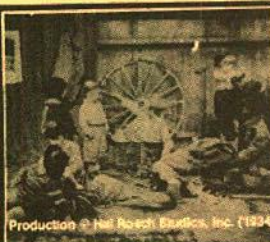
880-05-1590A, Super 8 magnetic sound, dialogue 11 min., 11-ozs. (Regularly \$16.98) NOW ONLY.....\$12.77
640-05-1590A, 16mm optical sound, dialogue 11 min., 2-lbs. (Regularly \$34.98) NOW ONLY.....\$27.77

PRICES SLASHED!!!

NOW!!!

LITTLE RASCALS

License Notice! These prints are licensed for nontheatrical use, home use and non-theatrical closed circuit television in the United States military and government personnel at their A.P.O. and F.P.O. addresses. For any other use, a license must be obtained from Hal Roach Studios, Inc. All territorial rights except the United States and Canada are reserved to Hal Roach Studios, Inc.



(1934)

THE FIRST ROUND-UP

starring SPANKY, SCOTTY, STYMIE and TOMMY BOND

The "Gang" goes on a camping trip, but doesn't want the company of the little kids, Spanky and Scotty. But it's the kids who remember to bring the food, and who aren't afraid of the dark. When a storm scares the big kids away, Spanky and Scotty just laugh, until lightning sets them running!

880-05-1598A, Super 8 magnetic sound, dialogue 19 min., 14-ozs. (Regularly \$32.98) NOW ONLY.....\$25.77
640-05-1598A, 16mm optical sound, dialogue 19 min., 1-lb. (Regularly \$59.98) NOW ONLY.....\$47.77



(1938)

CAME THE BRAWN

starring ALFALFA, SPANKY, DARLA, BUTCH and WALDO

The "Masked" wrestler can't beat Alfalfa, especially if he is scholarly Waldo behind the mask. But Butch puts on the costume and challenges the unknowing Alfalfa.

880-05-1611A, Super 8 magnetic sound, dialogue 11 min., 11-ozs. (Regularly \$16.98) NOW ONLY.....\$12.77
640-05-1611A, 16mm optical sound, dialogue 11 min., 2-lbs. (Regularly \$34.98) NOW ONLY.....\$27.77



(1935)

ANNIVERSARY TROUBLE

starring SPANKY, SCOTTY, and BUCKWHEAT

Spanky's father (Johnny Arthur) has forgotten his wedding anniversary again, but to save disgrace, he slips some money into an envelope. It's the same kind of envelope that Spanky put the "Gang's" treasury in to. When the boys want their money back, little Spanky has seemingly misplaced it.

880-05-1586A, Super 8 magnetic sound, dialogue 22 min., 14-ozs. (Regularly \$35.98) NOW ONLY.....\$28.77
640-05-1586A(S), 16mm optical sound, dialogue 22 min., 3-lbs. (Regularly \$84.98) NOW ONLY.....\$67.77

BIG BUSINESS

starring JOE, FARINA, MICKEY, and MARY

When the "Gang" opens up a barber shop it is complete with manicure lady, shoe-shine boy and laundry service... and what service they give.



(1924)

810-05-1085A, Standard 8mm, 375-feet, 14-ozs. (Regularly \$18.98) NOW ONLY.....\$14.77
860-05-1085A, Super 8, 425-feet, 14-ozs. (Regularly \$18.98) NOW ONLY.....\$14.77
620-05-1085A, 16mm silent, 775-feet, 3-lbs. (Regularly \$54.98) NOW ONLY.....\$43.77

WIGGLE YOUR EARS

starring MARY ANN, FARINA, JOE and JEAN

Here's the story of a little boy who could wiggle his ears... and a little girl who followed him around just to see them wiggling.



(1929)

810-05-1449A, Standard 8mm, 400-feet, 14-ozs. (Regularly \$19.98) NOW ONLY.....\$15.77
860-05-1449A, Super 8, 450-feet, 14-ozs. (Regularly \$19.98) NOW ONLY.....\$15.77
620-05-1449A(S), 16mm silent, 775-feet, 3-lbs. (Regularly \$54.98) NOW ONLY.....\$43.77



(1925)

MARY, QUEEN OF TOTS

starring MARY, MICKEY, JOE, FARINA and JACKIE

Mary's a poor little rich girl who is neglected by her mother and governess. Her prize toy is a set of dolls given to her by the kindly gardener who modeled the toys after local kids. Cruelly, the governess throws them out while Mary sleeps, but when Mary goes looking for them, she finds the "Gang" and thinks her dolls have come to life.

810-05-1290A, Standard 8mm, 400-feet, 14-ozs. (Regularly \$18.98) NOW ONLY.....\$14.77
860-05-1290A, Super 8, 450-feet, 14-ozs. (Regularly \$18.98) NOW ONLY.....\$14.77
620-05-1290A(S), 16mm silent, 775-feet, 3-lbs. (Regularly \$54.98) NOW ONLY.....\$43.77

NOSFERATU, THE VAMPIRE

(1922)

starring **MAX SCHRECH** and
GUSTAVE VON WANGENHEIM

The first attempt to translate Bram Stoker's *DRACULA* to the screen, *NOSFERATU* is filled with unusual and symbolic camera work and differs considerably in approach and content from Universal's version of 1931 which brought Bela Lugosi to fame.

The local and characterizations were altered in the adaptation because of copyright problems, and the script veered sharply away from the vampire lore set forth by Stoker. Yet, the soon-to-be recognized genius of director F. W. Murnau is visible in this complete version of the German classic thought to be lost not too many years ago. Close your eyes and wind back through the murky past to 1838, when an unspeakable horror was let loose upon the earth...

810-49-0952A, Standard 8mm, 950-feet, 2-lbs. Regularly \$40.98..... Sale Price \$34.77

860-49-0952A, Super 8, 1050-feet, 2-lbs. Regularly \$40.98..... Sale Price \$34.77

620-49-0952A(S), 16mm silent, 1900-feet, 6-lbs. Regularly \$149.98..... Sale Price \$126.77



SPIES



starring **RUDOLF KLEIN-ROGGE**,
GERDA MAURUS and
LIEN DEYERS

(1929)

Haigh, bank president, professional clown, and master criminal, is the head of a conspiracy through which he plans to control the world. Conflict is created when a female agent, Sonia, falls in love with her intended victim. Through a very complicated series of events, which culminates in a train wreck in a tunnel staged by Haigh in an attempt to kill the agent, he is surrounded at a theatre when performing as a clown and shoots himself on the stage as part of his act.

SPIES is one of the most famous of screen thrillers, distinguished by great directorial virtuosity, and made more interesting by the debate among film historians as to whether or not it reflects the mind and social conditions which produced the Third Reich.

860-49-1088A, Super 8, 1825-feet, 3-lbs. Regularly \$82.98..... Sale Price \$69.77

880-49-1088A, Super 8 magnetic sound, musical accompaniment by Gaylord Carter, 89 min., 3-lbs. Regularly \$164.98..... Sale Price \$139.77

640-49-1088A(S), 16mm optical sound, musical accompaniment by Gaylord Carter, 89 min., 9-lbs. Regularly \$319.98..... Sale Price \$269.77

END OF ST. PETERSBURG

The revolution in October-November, 1917, transformed czarist Russia into the Soviet Union, when communist-led troops deposed the coalition government in the old imperial capital of St. Petersburg (now Leningrad). In 1927, to commemorate the tenth anniversary of these events, the Soviet government commissioned a film by each of its two most famous directors, Sergei Eisenstein and Vsevolod Pudovkin. This is Pudovkin's masterpiece built around the problems of an individual family in which the characters also stand for broader concepts.



(1927)

Pudovkin communicated on a story level and on a symbolic level and filmed on the locations where the events of the revolution had occurred. Blackhawk's release, taken from 35mm master print imported directly from the Soviet Union, is by all odds the best-looking and most complete version in North America.

810-57-2402A, Standard 8mm, 1410-feet, 3-lbs. Regularly \$55.98..... Sale Price \$46.77

860-57-2402A, Super 8, 1590-feet, 3-lbs. Regularly \$55.98..... Sale Price \$46.77

880-57-2402A, Super 8 magnetic sound, music 76 min., 3-lbs. Regularly \$86.98..... Sale Price \$73.77

640-57-2402A, 16mm optical sound, music 76 min., 8-lbs. Regularly \$199.98..... Sale Price \$169.77

RASPUTIN — DEVIL OR SAINT?

(1930)

starring **NIKOLAI MALIKOFF**, **ERVIN KAISER**
and **MAX SCHRECH**

It's the closing days of Imperial Russia and the mad monk Rasputin holds Czarist Russia in his sway. The deep intrigue and mystical fanaticism of the last days of the Romanoffs is accurately portrayed in this powerful and fascinating German film.

Produced by Martin Berger with a Russo-German-English cast, *RASPUTIN* was originally entitled *RASPUTIN'S LIEBESABENTEUR* and was brought to the U.S. in 1930 by Unusual Pictures.

860-49-1109A, Super 8, 1191-feet, 2-lbs. Regularly \$39.98..... Sale Price \$33.77

620-49-1109A(S), 16mm silent, 1950-feet, 6-lbs. Regularly \$149.98..... Sale Price \$126.77



FILMS
OF

D. W. Griffith



(1911)

AS A BOY DREAMS

starring MARY PICKFORD

A boy, shanghaied by mutinous sailors, discovers a treasure map. Befriended by the captain's daughter, he escapes to race the mutineers to the buried treasure.

810-33-1224A, Standard 8mm, 175-feet, 11-ozs. (Regularly \$7.98)..... Sale Priced \$6.77
 860-33-1224A, Super 8, 225-feet, 11-ozs. (Regularly \$7.98)..... Sale Priced \$6.77
 620-33-1224A(S), 16mm silent, 400-feet, 2-lbs. (Regularly \$34.98)..... Sale Priced \$28.77



(1909)

THE MOUNTAINEER'S HONOR

starring MARY PICKFORD, KATE BRUCE and JAMES KIRKWOOD

A remarkable film for its time, this Griffith film features Kate Bruce portraying a mother who kills her son to save him from the hangman's noose.

810-33-1225A, Standard 8mm, 250-feet, 11-ozs. (Regularly \$8.98)..... Sale Priced \$6.77
 860-33-1225A, Super 8, 275-feet, 11-ozs. (Regularly \$8.98)..... Sale Priced \$6.77
 620-33-1225A(S), 16mm silent, 475-feet, 2-lbs. (Regularly \$34.98)..... Sale Priced \$28.77



(1911)

ENOCH ARDEN

starring LINDA ARVIDSON and WILFRED LUCAS

Griffith's most ambitious effort to this time. This was the first of three pictures he would film from the moving story of a man lucky in love, but unlucky in life; one who sacrifices all that he has for his family's happiness.

860-34-1936A, Super 8, 450-feet, 1-lb. (Regularly \$19.98)..... Sale Priced \$16.77
 640-34-2182A(S), 16mm optical sound, music & narration 22 min., 3-lbs. (Regularly \$59.98)..... Sale Priced \$49.77



(1912)

THE SUNBEAM

starring CLAIRE McDOWELL and DELL HENDERSON

Though a comedy which takes its point of departure from a deathbed, a little girl, playing with her doll, doesn't realize that her mother has died. Thinking that she is only asleep, she seeks affections of a stern spinster and lonely old bachelor.

810-34-2386A, Standard 8mm 237-feet, 14-ozs. (Regularly \$10.98)..... Sale Priced \$8.77
 860-34-2386A, Super 8, 260-feet, 14-ozs. (Regularly \$10.98)..... Sale Priced \$8.77
 620-34-2386A(S), 16mm silent, 465-feet, 3-lbs. (Regularly \$34.98)..... Sale Priced \$28.77

THE LONELY VILLA

starring MARY PICKFORD, MARION LEONARD and JAMES KIRKWOOD



(1909)

A dramatic treatment of a robbery in an isolated country manor, THE LONELY VILLA is one of the most important of the early movies. Its technical innovations had a profound effect on the movie industry and its method of story telling.

860-33-1898A, Super 8, 225-feet, 11-ozs. (Regularly \$9.98)..... Sale Priced \$7.77
 640-33-2157A, 16mm optical sound, music & narration 9 min., 2-lbs. (Regularly \$34.98)..... Sale Priced \$28.77

A PEARL BUTTON PARKING LOT

Until several years ago when we at Blackhawk purchased some additional property and black-topped our parking lot, the area was crushed rock mixed, believe it or not, with broken clam shells and segments of pearl buttons — all because the property had once been used by a pearl button manufacturer — in the days when Muscatine and Davenport were centers of pearl button manufacturing.



SWAT THE SPY

starring child stars
JANE & KATHERINE LEE

Andrew Sheldon's palatial home provides a meeting place for German Spies operating under Sheldon's butler Karl Schmidt. Jane and Katherine discover the treachery and humorously route the spies to a dozen, simultaneous, embarrassing ends.



(1918)

810-01-2253A, Standard 8mm, 215-feet, 11-ozs. Regularly \$10.98..... Sale Price \$8.77
860-01-2253A, Super 8, 230-feet, 11-ozs. Regularly \$10.98..... Sale Price \$8.77
620-01-2253A (S), 16mm silent, 415-feet, 2-lbs. Regularly \$36.98..... Sale Price \$28.77



(1932)

THE DENTIST

starring W.C. FIELDS with ELISE
CAVANNA and BABE KANE

Written by Fields, this comedy begins with a rather placid breakfast, a run-in with the ice-man, then on to the golf course for a funny routine. At his office, Fields treats his patients with less than finesse!

810-16-1083A, Standard 8mm, 325 feet, 14-ozs. Regularly \$15.98..... Sale Price \$12.77
880-16-1010A, Super 8 magnetic sound, dialogue 22 min., 1-lb. Regularly \$32.98..... Sale Price \$25.77
640-16-1010A, 16mm optical sound, dialogue 22 min., 3-lbs. Regularly \$59.98..... Sale Price \$47.77



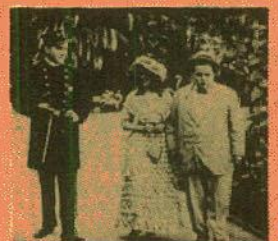
(1913)

MABEL'S NEW HERO

starring ROSCOE "FATTY" ARBUCKLE with
MABEL NORMAND

Mabel tries to keep her romantic spots with Fatty a secret from her friends and off they go to the beach. Handsome Harry lies in wait to pick up an unsuspecting young girl and Fatty, all for busting him in the nose, has to be restrained. A delightful Keystone farce!

810-13-1686A, Standard 8mm, 200-feet, 11-ozs. Regularly \$9.98..... Sale Price \$7.77
860-13-1686A, Super 8, 225-feet, 11-ozs. Regularly \$9.98..... Sale Price \$7.77
620-13-1686A (S), 16mm silent, 375-feet, 2-lbs. Regularly \$34.98..... Sale Price \$27.77



(1913)

FATTY JOINS THE FORCE

starring ROSCOE "FATTY" ARBUCKLE and DOT
FARLEY

Pushed into the drink against his will by Dot Farley, Fatty saves the police commissioner's little daughter from drowning. His reward? A job on the force! An outstanding Keystone comedy, this was released on November 24, 1913, but was re-released five years later by Tower Film Corporation as FATTY, ONE OF THE FINEST.

860-13-1657A, Super 8, 250-feet, 11-ozs. Regularly \$11.98..... Sale Price \$8.77
620-13-1657A (S), 16mm silent, 425-feet, 2-lbs. Regularly \$34.98..... Sale Price \$27.77



(1923)

IT'S A GIFT

starring SNUB POLLARD

This laugh riot contains the best example of a man with a system ever filmed and its all a prelude to the most sensational gasoline discovery of the century. You've heard that oil companies suppress revolutionary products — now see why! Backed by the creative gag writing of Charley Chase and Stan Laurel, Snub turned out masterpieces of precision comedies.

810-08-1314A, Standard 8mm, 200-feet, 11-ozs. Regularly \$7.98..... Sale Price \$5.77
860-08-1314A, Super 8, 240-feet, 11-ozs. Regularly \$7.98..... Sale Price \$5.77
880-08-1314A, Super 8 magnetic sound, music 11 min., 14-ozs. Regularly \$16.98..... Sale Price \$12.77
620-08-1314A (S), 16mm silent, 400-feet, 2-lbs. Regularly \$34.98..... Sale Price \$27.77
640-08-1314A, 16mm optical sound, music 11 min., 2-lbs. Regularly \$34.98..... Sale Price \$27.77

IN THE GREASE

starring JIMMY FINLAYSON

Jimmy is trying to raise a son and run the household himself, but confusion reigns, especially when the boy tries to pull a fast one on his Pop. Junior's teacher turns over his class to Jimmy, and the kids really go to work on the "new teacher" with comic chaos! Prints are of sparkling quality and come with original main and text titles.



(1925)

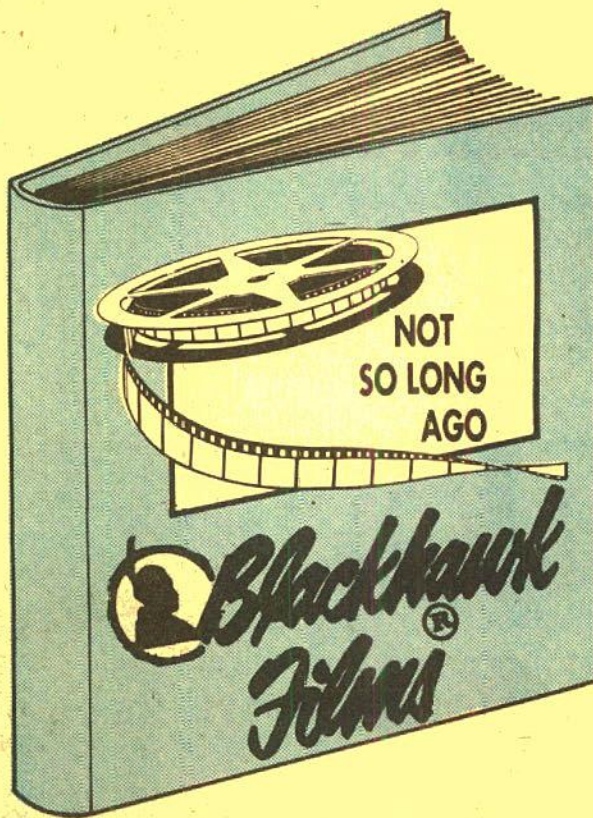
810-08-2073A, Standard 8mm, 225-feet, 11-ozs. Regularly \$9.98..... Sale Price \$7.77
860-08-2073A, Super 8, 250-feet, 11-ozs. Regularly \$9.98..... Sale Price \$7.77
620-08-2073A (S), 16mm silent, 420-feet, 2-lbs. Regularly \$34.98..... Sale Price \$27.77

A RAIL-FANS PARADISE?

Blackhawk's building at 1235 W. Fifth Street in Davenport has no special significance for most people, but for rail fans it does. You see, the main line of the Rock Island from Chicago to Denver, and from Chicago to Kansas City, Texas and New Mexico goes right by our front door. In fact, it runs right down the middle of Fifth Street. But, that isn't all. Less than 100-yards west of our building, the main line separates, the Denver-Omaha main going on directly west, while the main for Kansas City, Texas and New Mexico branches off to the southwest.

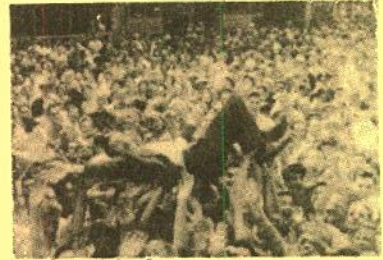
PHONE YOUR ORDER 800 — 553-1163

NOT VALID IN IOWA



CHAPTER

I



PEACE! IT'S WONDERFUL!

This four chapter production opens with Task Force 38 launching its second strike of the day over Tokyo. Then the message: "Pirate Leader, Pirate Leader, this is Pirate Base! Cease fire! Cease fire! Return to home plate! The war is over!" August 14, 1945 — not so long ago.

You'll see President Truman reporting on Japan's unconditional surrender, V-J Day, the housewife's hassle with the rationing system which finally ended, price tags — which never were the same again, "Fill 'er up!", Kilroy's coming home, the war brides, the displaced persons, graduation day as eleven million Americans went through the separation mill, veterans again in Quonset huts — at college, reconversion, planes and tanks becoming consumer goods, new cars were hard to get, the black market, nylons were back, the "New Look!"

860-76-1730A, Super 8, 300-feet, 11-ozs. (Regularly \$14.98).....
.....Sale Price \$11.77

CHAPTER

II



THE COMMUNIST THREAT!

In this second chapter of NOT SO LONG AGO, is pictured the time when a number of public figures passed from the scene — Henry Ford, Orville Wright, Babe Ruth, Florentino LaGuardia. We see the Mayor of New York clowning with Abbott and Costello, chasing fire engines and reading the comics over the radio during a newspaper strike. Then, revolution on the sport scene as Branch Rickey brought the first Negro player into the major leagues — Jackie Robinson of the Brooklyn Dodgers. At Fulton, Missouri, Winston Churchill warned the world of "The Iron Curtain." And the brand new United Nations was trying to cope with the "Cold War." There was anxiety about communism. Anti-communist feeling burst into violence at a scheduled concert of singer Paul Robeson. Hollywood's elite came to Washington in an epidemic of charge and counter charge. Gary Cooper was a friendly witness — Ronald Reagan, head of the Screen Actors Guild — offered a stout defense. Unfriendly witnesses, known as the Hollywood Ten, were sentenced for contempt. Bigger news exploded when Alger Hiss was accused of disloyalty. Shirley Temple married John Agar; Rita Hayworth married Aly Khan; Ingrid Bergman and Roberto Rossellini were romantically linked; Princess Elizabeth married the Duke of Edinburgh. Starving Europe was threatened by Communist domination and turned to America to stave off collapse.

860-76-1731A, Super 8, 200-feet, 11-ozs. (Regularly \$8.98).....
.....Sale Price \$7.77

CHAPTER

III



THE MARSHALL PLAN AND THE CAMPAIGN OF 1948

World leadership passed to Washington when the big news broke of a revolutionary plan to rescue Europe with American billions for relief and economic aid. In a war without bullets, an old soldier took over — Secretary of State George Marshall. General Eisenhower, in reporting on any possible interest in the Presidency, said: "I have consistently declined to consider such a contingency." And, President by accident, Harry Truman, was out to win the office on his own. The Republicans nominated Governor Thomas E. Dewey of New York. Everybody expected Dewey to win. All the polls showed Dewey with a comfortable lead. But Harry Truman paid no attention to the polls. On the evening of the election, everything pointed to Dewey as the winner. But the next morning, when the California totals came in, it was Harry Truman, winner on his own!

860-76-1732A, Super 8, 165-feet, 11-ozs. (Regularly \$7.98)..... Sale Price \$6.77

CHAPTER

IV



THE TRUMAN VICTORY AND A LOST PEACE

The final chapter of NOT SO LONG AGO opens with the Truman victory of Nov. 2, 1948, an upset if there ever was one. Then, the Electoral College dinner in January, with Harry Truman the star performer. And there were signs and portents in the sky — or were there? People had seen saucers in the sky — with their own eyes! Bright, shiny things that whooshed through the air at incredible speeds. The Air Force called them Unidentified Flying Objects. And there was something in the air besides saucers — television! Caesar and Coca; "Garroway at Large"; Faye Emerson; Kukla, Fran and Ollie; and Uncle Miltie, the man who owned Tuesday night. Dr. Albert Einstein warned of the hydrogen bomb. And, while automobiles had been scarce, now we had them to burn — in auto races! Then, on a June weekend in 1950, President Truman was called back to Washington from a weekend at Independence. It was a major crisis — in a distant place called Korea. Somewhere far, far away the peace had been lost — and we had to go and bring it back!

860-76-1733A, Super 8, 275-feet, 14-ozs. (Regularly \$14.98).....
.....Sale Price \$11.77



(1930)

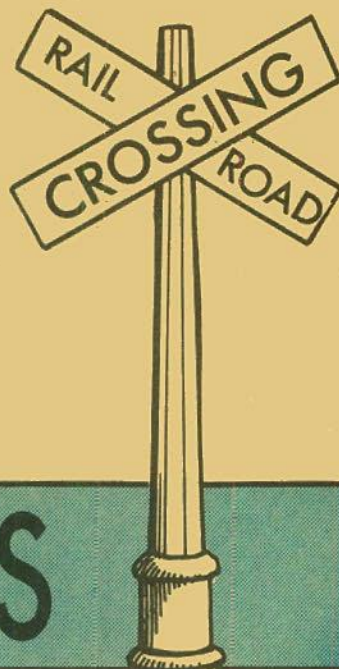
hem Branch; at Stowa Yard in Pottstown; along the main line south of Pottstown; and on the Riceway on the Reading Seashore Line.

810-77-1912A, Standard 8mm, 325-feet, 14-ozs. (Regularly \$15.98)..... Sale Price \$12.77

860-77-1912A, Super 8, 350-feet, 1-lb., (Regularly \$15.98)..... Sale Price \$12.77

STEAM ON THE READING

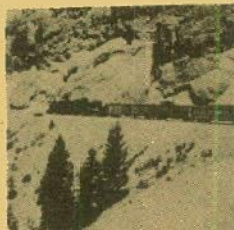
A pageant of locomotives and trains on the Reading, photographed in the waning days of steam. Pictures were taken principally at the Reading Terminal and the Tenth and Green Street Enginehouse of the Reading in Philadelphia; along the main line to Valley Forge; on the Bethlehem Branch; at Stowa Yard in Pottstown; along the main line south of Pottstown; and on the Riceway on the Reading Seashore Line.



RAILROAD MOVIES

THE BUSTLING NARROW GAUGE

See the San Juan on the Rio Grande as it prepares for its west-bound trip from Alamosa and over the mixed gauge to Antonito. Then a major sequence of a westbound freight approaching Cumbres Pass with 47 cars (1648 Tons), and going around the big loop on the east side of the pass. Scenes of the westbound San Juan at Cumbres, and eastbound San Juan coming up the 4 percent grade and around Windy Point.



810-77-1410A, Standard 8mm, 175-feet, 11-ozs. (Regularly \$8.98)..... Sale Price \$7.17

860-77-1410A, Super 8, 200-feet, 11-ozs. (Regularly \$8.98)..... Sale Price \$7.17

STEAM KINGS OF THE RAILS

Photographed by William W. Wilkes.



Action shots of steam locomotives from eastern United States and Canada on to the Pacific coast — all photographed in the early 1950's. Here's what you'll see: Illinois Central 4-8-2 No. 2547; Wabash 2-6-0 No. 573; Burlington 4-8-4 No. 5619; Milwaukee 4-6-2 No. 196; Southern Pacific 4-8-2 No. 4198; C. & I. M. 0-8-0's Nos. 547 and 545; Burlington 2-10-4 No. 6324; Canadian National 2-8-0 No. 2476 and 2-8-2 No. 3515; Canadian National 0-6-0 No. 7438; Illinois Central 2-10-2 No. 2730; Union Pacific 4-8-4 No. 834; Rio Grande 2-8-2 No. 3609; Union Pacific 4-6-4 No. 3988 and 4-8-4 No. 809; Canadian National 0-8-0 No. 8526; Pennsylvania 4-8-2 No. 6707; New York Central 2-8-2 No. 1461; Norfolk & Western 2-6-4-2 No. 1404; Santa Fe 2-10-4 No. 5016; Baltimore & Ohio 2-8-2 No. 4532 and Nickel Plate 2-8-4 No. 770.

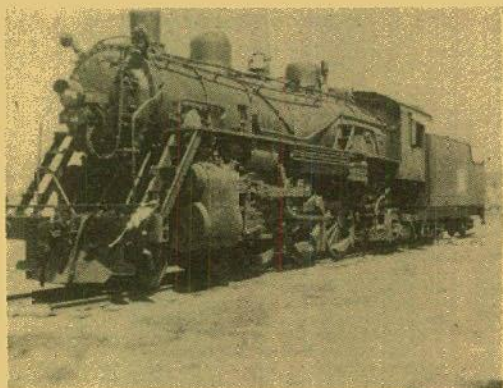
810-77-1477A, Standard 8mm, 200-feet, 11-ozs. (Regularly \$9.98)..... Sale Price \$7.97

860-77-1477A, Super 8, 225-feet, 11-ozs. (Regularly \$9.98)..... Sale Price \$7.97

FIVE MIDWESTERN RAILROADS IN THE DAYS OF STEAM

This film pictures some of the outstanding locomotives of different midwestern roads. Milwaukee's Hiawatha-type Atlantics, two Milwaukee Hudsons, and Pacifics and Consolidations, a Rock Island Mountain-type, a Northern and Pacific; a Chicago Great Western Mikado and two of the Great Western's Texas-type; two North Western Northerns, two Pacifics and a ten-wheeler; and four Burlington Northerns and a Pacific.

860-77-1837A, Super 8, 175-feet, 11-ozs. (Regularly \$8.98)..... Sale Price \$7.17



RAILROADING IN THE EAST

This historical film includes shots of the Philadelphia Express, Jersey Central; Black Diamond Express, Lehigh Valley; Horseshoe Curve, Pennsylvania R.R.; West Shore Local, N.Y.C. & H.R.; Ulster and Delaware; Switcher; Rotary Snow Plows on Lehigh Valley; Sarnia Tunnel, Grand Trunk; Empire State Express, N.Y.C. & H.R., and "Ghost Train", a Biograph trick film.

860-77-1650A, Super 8, 240-feet, 11-ozs. (Regularly \$9.98)..... Sale Price \$7.97



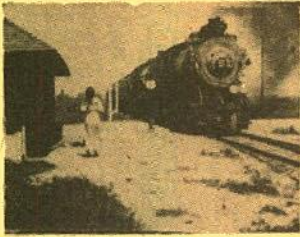
(1897-1906)

THE COAST DAYLIGHT IN THE DAYS OF STEAM

Photographed in 1937, the year the Coast Daylights were placed in service, this film shows the famous Daylight type 4-8-4 locomotives from the first six of this type made by Lima. The unusual rolling stock that made up this twelve-car train is covered thoroughly, both outside and inside... coaches, parlor cars, coffee shop, tavern, and diner.

860-77-1855A, Super 8, 300-feet, 14-ozs. (Regularly \$15.98)..... Sale Price \$12.77





(1915)

skillful editing, Aywon had reworked the scenes and sequences into almost completely new stories for its two reel issues.

THE RIVAL RAIL-ROAD PLOT illustrates the making of a new story by re-editing, its footage extracted principally from Chapter 24, A RACE FOR CROSSING; Chapter 37, THE GIRL ON THE ENGINE, and scenes in the dispatcher's office coming from at least one other of the original films.

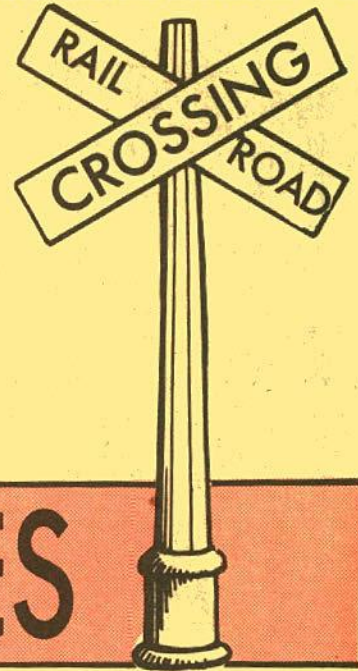
860-35-2000A, Super 8, 450-feet, 11-ozs., (Regularly \$15.98) Sale Price \$12.77
 620-35-2000A(S), 16mm silent, 800-feet, 3-lbs. (Regularly \$54.98) Sale Price \$45.77

THE RIVAL RAILROAD PLOT

with HELEN HOLMES

Kalem's series THE HAZARDS OF HELEN was one of the most commercial successes of the mid-teens, with 119 titles released on a weekly basis between Nov. 14, 1914 and Feb. 2, 1917. Helen Holmes was the Helen in the first forty-eight HAZARDS; Helen Gibson played the part over the remainder of the series.

In the fall of 1919, Nathan Hirsch acquired thirty of the Helen Holmes railroad melodramas made by Kalem for reissue by his Aywon Film Corporation. It must have been a bit surprising to see Aywon's releases, rechristened THE ADVENTURES OF HELEN, coming out as two reelers, since most of the originals had been of one reel length. Through



RAILROAD MOVIES

THE LONEDALE OPERATOR (1912)

with BLANCHE SWEET, FRANK GRANDON and WILFRED LUCAS

The holdup of the railroad payroll, the girl telegrapher's desperate wire for help and the race against time to save her provided the basis for an exciting reel of film and one of the classic cinema short subjects from the early days.

D. W. Griffith's use of intercutting to build suspense was a gradual development and shows to good advantage in THE LONEDALE OPERATOR. The use of close-ups and the "Griffith last-minute rescue" also play a prominent role in what has become one of Blanche Sweet's best known roles. Sharp-eyed fans will spot a number of inconsistencies in the handling of the plot, but none serious enough to detract from the enjoyment of an action-filled reel.

860-35-1818A, Super 8, 225-feet, 11-ozs. (Regularly \$7.98) Sale Price \$6.77
 620-35-1818A(S), 16mm silent, 400-feet, 2-lbs. (Regularly \$34.98) Sale Price \$28.77



TIME FREIGHT TO TIDEWATER

This film tells the story of the Norfolk and Western's No. 86, running from Columbus, Ohio to Norfolk, Virginia, headed by some of the biggest and most beautiful steam locomotives ever designed and built. There are many terrific steam shots and scenes of freight operations through some of the most picturesque country in the East.

860-77-2639A, Super 8, 327-feet, 14-ozs. \$12.88



THE SUPER CHIEF

A super film about America's No. 1 glamour train, the Santa Fe's Super Chief, daily extra-fare streamliner between Chicago and Los Angeles on a 39 3/4-hour schedule.

860-77-2320A, Super 8, 175-feet, 11-ozs. \$6.88
 880-77-2659A, Super 8 magnetic sound, music & narration 9 min., 11-ozs. \$9.88



RAILROAD RAIDERS OF '62

Discovered in the archives of The Library of Congress is the first picturization of the famous chase of the locomotive. The General, by The Texas — and the thrilling exploits of Andrews Raiders — produced by the pioneer Kalem company in 1911.

Of course, the authentic General and Texas do not themselves appear in the film, but Kalem turned up — almost 65 years ago — with a couple of old timers that look like they were at least as old. There are some excellent train and action shots. In short, this is a whiz of a film for every rail fan and film collector!

860-45-2643A, Super 8, 182-feet, 11-ozs. \$6.88

Use Your BankAmericard, Master Charge or Blackhawk Charge

INTERMISSION

AND SCENIC

SLIDES

NO LOUD TALKING OR WHISPERING



This superlative collector's slide set contains 14 2"x2" color copies from the 3/4"x4" stereopticon originals of 1912. Some tid-bits are: "If Annoyed When Here Please Tell the Management", "Ladies Kindly Remove Your Hats", "Please Applaud With Hands Only", etc.

350-87-0836A, 14 slides (Regularly \$3.99) **NOW ONLY.....\$3.17**

WASHINGTON D.C. IN SIGHT AND SOUND



This is the next best thing to a walking tour of the Nation's capital. Historic buildings and monuments come alive in this sparkling "new" presentation. This set contains 73 full-color pictures on 26 "superslides" PLUS a 31 minute sound track with music, sound effects and narration PACKAGED in a permanent case.

353-01-0001A, 20 superslides and 1 tape cassette (Regularly \$9.95) **NOW ONLY.....\$8.67**

ONE MOMENT PLEASE



A collection of the real thing from the nickelodeon era — the "between reels" and intermission slides which bring you not only authenticity but also true enjoyment! This set is a must for family movies or just for fun!

350-87-0076A, 17 slides (Regularly \$2.89) **NOW ONLY.....\$2.27**

DON'T SPIT ON THE FLOOR



Authentic nickelodeon intermission and "Interruption" slides from 1910 to 1920 will delight your family and friends. This is a choice group including such brilliantly colored numbers as: "Ladies, Please Remove Your Hats", "Anyone Raising A Disturbance In This Theater Will Be Bounced", etc.

350-87-0299A, 20 slides (Regularly \$3.39) **NOW ONLY.....\$2.67**

REMEMBER — THERE ARE LADIES PRESENT



One of the funniest offerings ever from Blackhawk! Here is a spread of thirty of the old glass "stereopticon" slides from the days around World War I. Among the texts are: "Bring The Children", "Matinee Daily", "Gentlemen, Will Please Remove Their Hats. Others Must!", etc.

350-87-0903A, 30 slides (Regularly \$4.99) **NOW ONLY.....\$3.97**

YOU KIDS KEEP QUIET



Here is one of the best intermission slide sets we've ever offered. These nickelodeon slides include: "Welcome!", "Good Afternoon", "Every Child Must Have A Ticket!", "Our Shows Are Fresh, Clean and Entertaining", "If the Show Does Not Give You Satisfaction, Get Your Money Back — If You Can", etc.

350-87-0309A, 20 slides (Regularly \$3.39) **NOW ONLY.....\$2.67**



GOING TO CONGRESS

(1924)

Directed by **ROB WAGNER**
starring **WILL ROGERS, MARIE MOSQUINI, MOLLIE THOMPSON and JACK ACKROYD**

Things look so bad for the party in the upcoming election that it runs Will as the candidate. A slip of the tongue and he wins, heading for the Amusement Center of the world — Washington, D.C., and a new career. Will Rogers' political satire was sharp and timely and he made several telling points about the operation of a free society in several of his Roach comedies of 1923-24.

810-09-1047A, Standard 8mm, 400-feet, 14-ozs. (Regularly \$15.98).....
Now Only \$12.77
860-09-1047A, Super 8, 475-feet, 14-ozs. (Regularly \$15.98).....
Now Only \$12.77
620-09-1047A(S), 16mm silent, 825-feet, 3-lbs. (Regularly \$54.98).....
Now Only \$43.97



(1924)

BIG MOMENTS FROM LITTLE PICTURES

Produced by **HAL ROACH**
starring **WILL ROGERS**

It's the idea of the century — save time wasted watching long feature films by getting to the heart of the matter immediately, with Will Rogers as your rope-twirling, gum-chewing on stage guide through a lively collection of skits on the careers of Valentino, Fairbanks, and the Keystone Comedies in this hilarious parody of moviedom, both in front of and behind the cameras.

Disposing of Valentino (in *BLOOD AND SAND*) and Doug Fairbanks (in *ROBIN HOOD*) with a few quick licks of his rapier-like wit, there's then a fast takeoff on the Fox weepy *OVER THE HILL* — but Will Rogers has singled out Roach's arch rival Mack Sennett for in depth treatment, resulting in the best imitation of the Keystone Cops ever put on film. Rogers is in costume as Ford Sterling, and diminutive Roach character actor Charlie Hall deftly essays Charlie Chaplin, with everyone burlesquing the Sennett antics and camera tricks that had established the Keystone Cops and Ben Turpin et al, as screen comedy institutions.

BIG MOMENTS FROM LITTLE PICTURES received lavish praise from exhibitors as a real money-maker, and is just as surely today a "must to see" for film buffs, and anyone who's enjoyed Valentino, Fairbanks, Sennett's stable of Keystone comics, or particularly America's pre-eminent humorist, the comedy conscience of the nation, Will Rogers.

810-09-1709A, Standard 8mm, 375-feet, 14-ozs. (Regularly \$16.98).....
Now Only \$13.57
860-09-1709A, Super 8, 425-feet, 14-ozs. (Regularly \$16.98).....
Now Only \$13.57
620-09-1709A(S), 16mm silent, 750-feet, 3-lbs. (Regularly \$54.98).....
Now Only \$47.17



(1924)

A TRUTHFUL LIAR

starring **WILL ROGERS, RICHARD PENNELL and BETH DARLINGTON**

Alfalfa Doolittle makes his annual pilgrimage from Washington back home to keep the folks informed on his activities. As their votes are worth at least a story, he tells them how the Wild West won a kingdom with a rope and a deck of cards — some fib! One of Will Rogers' pet peeves was royalty and the concept that one man was better than another by virtue of his birth. While Will never imposed his own viewpoint by preaching, he managed to put his feelings across with satire and the Rogers wit was never in keener shape than in *A TRUTHFUL LIAR*, as he lobs both sides with equal vigor.

810-09-1702A, Standard 8mm, 375-feet, 14-ozs. (Regularly \$16.98).....
Now Only \$13.57
860-09-1702A, Super 8, 425-feet, 14-ozs. (Regularly \$16.98).....
Now Only \$13.57
620-09-1702A(S), 16mm silent, 750-feet, 3-lbs. (Regularly \$54.98).....
Now Only \$43.97



(1924)

OUR CONGRESSMAN

Directed by **ROB WAGNER**
starring **WILL ROGERS, MADGE HUNT, ANNA BETH DARLINGTON, FRANK BUTLER, HELEN GILMORE and JIMMY FINLAYSON**

Will believed that folks should really know what their Congressman did to earn his keep, so he set out to show them in this hilarious "expose" of political life in the twenties. While he was at it, Will also "exposed" the life style of the wealthy, the points of golf and the art of state dinners, with a rustic finesse hard to match in any occupation.

810-09-1048A, Standard 8mm, 350-feet, 14-ozs. (Regularly \$14.98).....
Now Only \$11.77
860-09-1048A, Super 8, 425-feet, 14-ozs. (Regularly \$14.98).....
Now Only \$11.77
620-09-1048A(S), 16mm silent, 725-feet, 3-lbs. (Regularly \$54.98).....
Now Only \$43.97

WILL ROGERS FILM SALE



(1924)

THE COWBOY SHEIK

starring **WILL ROGERS, MARIE MOSQUINI, EARL MOHAN, HELEN GILMORE and BILLY ENGLE**

What chance does the shy but honest cowpoke stand when it comes to taking the pretty schoolmarm to the big dance? Very little when you consider that the competition is the toughest bully in town. But leave it to Will to draw the winning straw!

810-09-1049A, Standard 8mm, 425-feet, 14-ozs. (Regularly \$16.98).....
Now Only \$13.57
860-09-1049A, Super 8, 450-feet, 14-ozs. (Regularly \$16.98).....
Now Only \$13.57
620-09-1049A(S), 16mm silent, 750-feet, 3-lbs. (Regularly \$54.98).....
Now Only \$43.97



(1924)

THE CAKE EATER

starring **WILL ROGERS, MARIE MOSQUINI, BILLY ENGLE, GRACE WOODS, PASY O'BRYNE and AL FORBES**

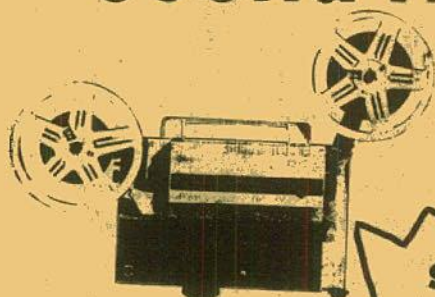
Selected by the ranch's new owners as their ideal cowboy, Will became the butt of his fun-loving friends' pranks. But when the spinsters decide that the way to his heart is through his stomach, Will's really in trouble!

A delightful blend of dignified slapstick and wise-cracking subtitles, *THE CAKE EATER* is one of Will Rogers' better comedies for Hal Roach. Will came across as a true victim of circumstances in this satire of the West he loved so much, mixing heroic action with genuine comic moments in two reels that will keep you chuckling all the way through.

810-09-1791A, Standard 8mm, 325-feet, 14-ozs. (Regularly \$15.98).....
Now Only \$12.77
860-09-1791A, Super 8, 350-feet, 14-ozs. (Regularly \$15.98).....
Now Only \$12.77
620-09-1791A(S), 16mm silent, 750-feet, 3-lbs. (Regularly \$54.98).....
Now Only \$43.97

Sound Movies for Everyone!

EUMIG MARK S802



**Eumig
MARK S802**

Regular \$279.95

**SAVE
\$60⁰⁰**

Blackhawk makes it easier for just about everybody to enjoy sound movies. Now you can enjoy the talking films of the "Little Rascals", Laurel & Hardy" or one of the newly scored Charlie Chaplin Mutuals. Check the Eumig S802 out:

- Designed for magnetic sound recording as well as playback.
- sound-on-sound recording; automatic threading with 600-ft. capacity.
- 12V-75W Dichroic reflector Tungsten Halogen bulb; Vario-Eupronent F1.6 17-30mm Zoom Lens.
- Adjusts automatically to the standard sound separation (sound preceding picture) of 18 frames.

030-24-0092A, MARK S802 SUPER 8 SOUND, 18-lbs, (Regularly \$279.95)

NOW PRICED AT \$219.88

REELS & CANS SALE

NUMBER	CAP.	WT. EA.	3 FOR REG.	NOW	6 FOR REG.	NOW	051-27-0034A	400-feet	6-ozs.	(\$ 5.19)	4.15	(\$ 9.29)	7.43
050-27-0001A	200-feet	6-ozs.	(\$ 3.89)	3.11	(\$ 6.89)	5.51	051-27-0044A	600-feet	1-lb.	(\$11.69)	9.35	(\$20.89)	16.71
050-27-0002A	400-feet	6-ozs.	(\$ 4.39)	3.51	(\$ 7.89)	6.31	051-27-0045A	800-feet	1-lb.	(\$12.49)	9.98	(\$22.29)	17.83
050-27-0026A	600-feet	2-lbs.	(\$ 8.59)	6.87	(\$15.29)	12.23	051-27-0046A	1200-feet	1-lb.	(\$13.29)	10.63	(\$23.69)	18.95
050-27-0027A	800-feet	2-lbs.	(\$ 9.79)	7.83	(\$17.49)	13.99	051-27-0047A	1600-feet	1-lb.	(\$15.59)	12.47	(\$27.79)	22.23
050-27-0028A	1200-feet	2-lbs.	(\$11.69)	9.35	(\$20.89)	16.71	051-27-0048A	2000-feet	2-lbs.	(\$21.29)	17.03	(\$37.89)	30.31
8mm METAL CANS													
050-27-0003A	400-feet	6-ozs.	(\$ 4.39)	3.51	(\$ 7.89)	6.31	SUPER 8 PLASTIC REELS						
050-27-0004A	600-feet	2-lbs.	(\$ 9.69)	7.75	(\$17.29)	13.83	051-21-0049A	200-feet	2-ozs.	---	---	(\$ 1.69)	1.35
050-27-0005A	800-feet	2-lbs.	(\$10.79)	8.63	(\$19.19)	15.35	051-21-0050A	400-feet	2-ozs.	---	---	(\$ 3.19)	2.55
050-27-0006A	1200-feet	3-lbs.	(\$13.29)	10.63	(\$23.69)	18.95	DUAL 8 PLASTIC REELS AND CANS						
050-27-0007A	1600-feet	3-lbs.	(\$14.69)	11.75	(\$26.09)	20.87	051-27-0055A	200-feet	6-ozs.	(\$ 3.89)	3.11	(\$ 6.89)	5.51
050-27-0008A	2000-feet	5-lbs.	(\$20.49)	16.39	(\$36.39)	29.11	051-27-0056A	400-feet	6-ozs.	(\$ 5.09)	4.07	(\$ 9.09)	7.27
16mm METAL CANS													
050-27-0021A	600-feet	2-lbs.	(\$ 5.99)	4.79	(\$10.79)	8.63	16mm METAL REELS						
050-27-0022A	800-feet	2-lbs.	(\$ 6.89)	5.51	(\$12.19)	9.75	051-27-0003A	400-feet	6-ozs.	(\$ 4.39)	3.51	(\$ 7.89)	6.31
050-27-0023A	1200-feet	3-lbs.	(\$ 8.49)	6.79	(\$15.09)	12.07	051-27-0004A	600-feet	6-ozs.	(\$ 9.69)	7.75	(\$17.29)	13.83
050-27-0024A	1600-feet	3-lbs.	(\$ 8.79)	7.03	(\$15.59)	12.47	051-27-0005A	800-feet	2-lbs.	(\$10.79)	8.63	(\$19.19)	15.35
050-27-0025A	2000-feet	5-lbs.	(\$13.59)	10.87	(\$24.19)	19.35	051-27-0006A	1200-feet	3-lbs.	(\$13.29)	10.63	(\$23.69)	18.95
8mm METAL REELS													
051-27-0001A	200-feet	6-ozs.	(\$ 3.89)	3.11	(\$ 6.89)	5.51	051-27-0007A	1600-feet	3-lbs.	(\$14.69)	11.75	(\$26.09)	20.87
051-27-0002A	400-feet	6-ozs.	(\$ 4.39)	3.51	(\$ 7.89)	6.31	051-27-0008A	2000-feet	5-lbs.	(\$20.49)	16.39	(\$36.39)	29.11
8mm PLASTIC REELS													
051-21-0015A	200-feet	2-ozs.	---	---	(\$ 1.69)	1.35	051-27-0009A	2300-feet	5-lbs.	(\$23.49)	18.79	(\$41.69)	33.35
051-21-0016A	400-feet	2-ozs.	---	---	(\$ 3.19)	2.55	051-27-0038A	600-feet	2-lbs.	(\$ 5.99)	4.79	(\$10.79)	8.63
SUPER 8 METAL REELS													
051-27-0033A	200-feet	4-ozs.	(\$ 4.39)	3.51	(\$ 7.89)	6.31	051-27-0039A	800-feet	2-lbs.	(\$ 6.89)	5.51	(\$12.19)	9.75
16mm PLASTIC REELS													
051-27-0038A	600-feet	2-lbs.	(\$ 5.99)	4.79	(\$10.79)	8.63	051-27-0040A	1200-feet	2-lbs.	(\$ 8.49)	6.79	(\$15.09)	12.07
051-27-0039A	800-feet	2-lbs.	(\$ 6.89)	5.51	(\$12.19)	9.75	051-27-0041A	1600-feet	2-lbs.	(\$ 8.79)	7.03	(\$15.59)	12.47
051-27-0040A	1200-feet	2-lbs.	(\$ 8.49)	6.79	(\$15.09)	12.07	051-27-0042A	2000-feet	3-lbs.	(\$13.59)	10.87	(\$24.19)	19.35
051-27-0041A	1600-feet	2-lbs.	(\$ 8.79)	7.03	(\$15.59)	12.47	051-27-0043A	2300-feet	4-lbs.	(\$15.49)	12.39	(\$27.59)	22.07
051-27-0042A	2000-feet	3-lbs.	(\$13.59)	10.87	(\$24.19)	19.35	8mm REELS AND CANS SETS						
051-27-0043A	2300-feet	4-lbs.	(\$15.49)	12.39	(\$27.59)	22.07	051-13-0018A	200-feet	6-ozs.	(\$ 2.19)	1.99	---	---
BONUS SUPER 8 REELS WITH CAN													
051-24-0057A	600-feet	1-lb.	(\$13.49)	11.29	---	---	051-13-0020A	400-feet	9-ozs.	(\$ 3.29)	2.79	---	---

Phone Your Order TOLL FREE: 800 — 553-1163 (Not Valid in Iowa)



CASTLE FILMS SALE

Abbott & Costello Meet Frankenstein with Bela Lugosi and Lon Chaney

711-20-0045A, Standard 8mm (Regularly \$7.95)..... NOW \$6.36
741-20-0003A, Super 8 (Regularly \$7.95)..... NOW \$6.36
746-20-0003A, Super 8 magnetic sound (Regularly \$16.95)..... NOW \$13.56

Abbott & Costello Meet Dr. Jekyll & Mr. Hyde with Boris Karloff and Craig Stevens

711-20-0224A, Standard 8mm (Regularly \$7.95)..... NOW \$6.36
741-20-0002A, Super 8 (Regularly \$7.95)..... NOW \$6.36
746-20-0003A, Super 8 magnetic sound (Regularly \$16.95)..... NOW \$13.56

Abbott & Costello Meet The Mummy

711-20-0213A, Standard 8mm (Regularly \$7.95)..... NOW \$6.36
741-20-0092A, Super 8 (Regularly \$7.95)..... NOW \$6.36
746-20-0019A, Super 8 magnetic sound (Regularly \$16.95)..... NOW \$13.56

Champs Of The Chase

711-20-0253, Standard 8mm (Regularly \$7.95)..... NOW \$6.36
741-20-0035A, Super 8 (Regularly \$7.95)..... NOW \$6.36

The Foreign Legion

711-20-0226A, Standard 8mm (Regularly \$7.95)..... NOW \$6.36
741-20-0033A, Super 8 (Regularly \$7.95)..... NOW \$6.36

Have Badge — Will Chase

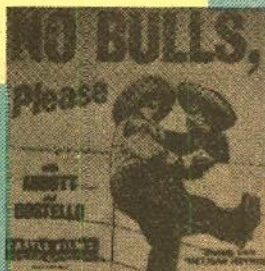
741-20-0031A, Super 8 (Regularly \$7.95)..... NOW \$6.36
746-20-0004A, Super 8 magnetic sound (Regularly \$16.95)..... NOW \$13.56

Hollywood or Bust

711-20-0252A, Standard 8mm (Regularly \$7.95)..... NOW \$6.36
746-20-0037A, Super 8 magnetic sound (Regularly \$16.95)..... NOW \$13.56

Midget Car Maniacs

711-20-0228A, Standard 8mm (Regularly \$7.95)..... NOW \$6.36
741-20-0004A, Super 8 (Regularly \$7.95)..... NOW \$6.36



No Bulls, Please!

711-20-0227A, Standard 8mm (Regularly \$7.95)..... NOW \$6.36
741-20-0034A, Super 8 (Regularly \$7.95)..... NOW \$6.36
746-20-0035A, Super 8 magnetic sound (Regularly \$16.95)..... NOW \$13.56

No Indians Please!

711-20-0230A, Standard 8mm (Regularly \$7.95)..... NOW \$6.36
741-20-0040A, Super 8 (Regularly \$7.95)..... NOW \$6.36

Pardon My Sarong

711-20-0279A, Standard 8mm (Regularly \$7.95)..... NOW \$6.36
741-20-0149A, Super 8 (Regularly \$7.95)..... NOW \$6.36
746-20-0060A, Super 8 magnetic sound (Regularly \$16.95)..... NOW \$13.56

Ride 'em Cowboy

711-20-0223A, Standard 8mm (Regularly \$7.95)..... NOW \$6.36
741-20-0029A, Super 8 (Regularly \$7.95)..... NOW \$6.36

Riot On Ice

711-20-0229A, Standard 8mm (Regularly \$7.95)..... NOW \$6.36
741-20-0039A, Super 8 (Regularly \$7.95)..... NOW \$6.36

Rocket And Roll

711-20-0225A, Standard 8mm (Regularly \$7.95)..... NOW \$6.36
741-20-0032A, Super 8 (Regularly \$7.95)..... NOW \$6.36
746-20-0032A, Super 8 magnetic sound (Regularly \$16.95)..... NOW \$13.56

Take Bus, Pay Later

711-20-0273A, Standard 8mm (Regularly \$7.95)..... NOW \$6.36
741-20-0144A, Super 8 (Regularly \$7.95)..... NOW \$6.36
746-20-0055A, Super 8 magnetic sound (Regularly \$16.95)..... NOW \$13.56

The Big Thumb From "It's A Gift"

711-16-0232A, Standard 8mm (Regularly \$7.95)..... NOW \$6.36
741-16-0104A, Super 8 (Regularly \$7.95)..... NOW \$6.36
746-16-0025A, Super 8 magnetic sound (Regularly \$16.95)..... NOW \$13.56

California Bound From "It's A Gift"

711-16-0183A, Standard 8mm (Regularly \$7.95)..... NOW \$6.36
741-16-0062A, Super 8 (Regularly \$7.95)..... NOW \$6.36
746-16-0030A, Super 8 magnetic sound (Regularly \$16.95)..... NOW \$13.56

Circus Slicker

746-16-0080A, Super 8 magnetic sound (Regularly \$16.95)..... NOW \$13.56

The Great Chase From "The Bank Dick"

711-16-0190A, Standard 8mm (Regularly \$7.95)..... NOW \$6.36
741-16-0043A, Super 8 (Regularly \$7.95)..... NOW \$6.36
746-16-0031A, Super 8 magnetic sound (Regularly \$16.95)..... NOW \$13.56

The Great McGonigle

711-16-0166A, Standard 8mm (Regularly \$7.95)..... NOW \$6.36
741-16-0128A, Super 8 (Regularly \$7.95)..... NOW \$6.36
746-16-0029A, Super 8 magnetic sound (Regularly \$16.95)..... NOW \$13.56

Hurry, Hurry

746-16-0081A, Super 8 magnetic sound (Regularly \$16.95)..... NOW \$13.56

If I Had A Million

711-16-0231A, Standard 8mm (Regularly \$7.95)..... NOW \$6.36
741-16-0103A, Super 8 (Regularly \$7.95)..... NOW \$6.36
746-16-0024A, Super 8 magnetic sound (Regularly \$16.95)..... NOW \$13.56

Much Ado About Golf Excerpts from "You're Telling Me"

711-16-0287A, Standard 8mm (Regularly \$7.95)..... NOW \$6.36
741-16-0157A, Super 8 (Regularly \$7.95)..... NOW \$6.36
746-16-0078A, Super 8 magnetic sound (Regularly \$16.95)..... NOW \$13.56

Incredible Jewel Robbery

711-01-0280A, Standard 8mm (Regularly \$7.95)..... NOW \$6.36
741-01-0150A, Super 8 (Regularly \$7.95)..... NOW \$6.36
746-01-0061A, Super 8 magnetic sound (Regularly \$16.95)..... NOW \$13.56

Pigskin Capers

Excerpts from "Horsefeathers"

711-01-0281A, Standard 8mm (Regularly \$7.95)..... NOW \$6.36
741-01-0151A, Super 8 (Regularly \$7.95)..... NOW \$6.36
746-01-0062A, Super 8 magnetic sound (Regularly \$16.95)..... NOW \$13.56

The Stowaways

Excerpts from "Monkey Business"

741-01-0171A, Super 8 (Regularly \$7.95)..... NOW \$6.36
746-01-0086A, Super 8 magnetic sound (Regularly \$16.95)..... NOW \$13.56

This Is War

Excerpts from "Duck Soup"

711-01-0282A, Standard 8mm (Regularly \$7.95)..... NOW \$6.36
741-01-0152A, Super 8 (Regularly \$7.95)..... NOW \$6.36
746-01-0063A, Super 8 magnetic sound (Regularly \$16.95)..... NOW \$13.56

Private Eye Pooch

711-81-0246A, Standard 8mm (Regularly \$7.95)..... NOW \$6.36
741-81-0124A, Super 8 (Regularly \$7.95)..... NOW \$6.36
742-81-0022A, Super 8 color (Regularly \$16.95)..... NOW \$13.56

Cowboy And The Girl starring John Wayne and Jean Arthur from "Lady Takes A Chance"

711-85-0285A, Standard 8mm (Regularly \$7.95)..... NOW \$6.36
741-85-0155A, Super 8 (Regularly \$7.95)..... NOW \$6.36
746-85-0066A, Super 8 magnetic sound (Regularly \$16.95)..... NOW \$13.56

Geronimo with Andy Devine

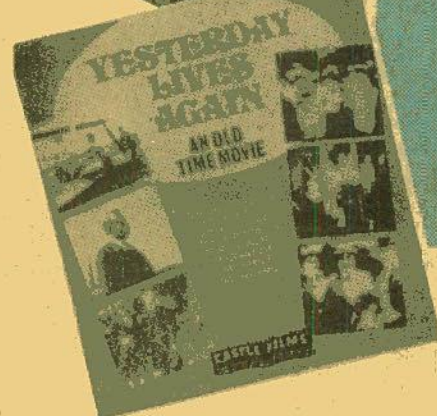
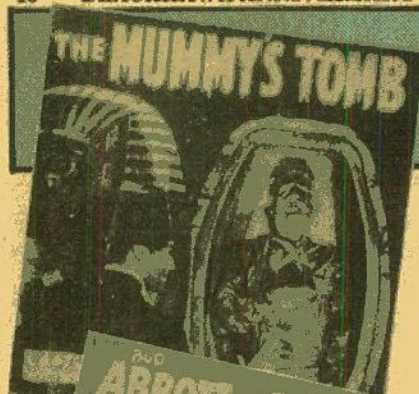
711-85-0165A, Standard 8mm (Regularly \$7.95)..... NOW \$6.36
741-85-0088A, Super 8 (Regularly \$7.95)..... NOW \$6.36
746-85-0088A, Super 8 magnetic sound (Regularly \$16.95)..... NOW \$13.56

Perils In Wildest Africa Perils of Pauline

with Pat Boone, Pam Austin and Terry Thomas
741-85-0143A, Super 8 (Regularly \$7.95)..... NOW \$6.36

Use Your BankAmericard, Master Charge or Blackhawk Charge

SAVE NOW ON



Perils Italian Style Perils of Pauline with Pat Boone

711-85-0284A, Standard 8mm (Regularly \$7.95)..... NOW \$6.36
741-85-0154A, Super 8 (Regularly \$7.95)..... NOW \$6.36



Psycho
with Janet Leigh and Anthony Perkins
741-85-0170A, Super 8 (Regularly \$7.95)..... NOW \$6.36

Reluctant Astronaut
starring Don Knotts
711-85-0283A, Standard 8mm (Regularly \$7.95)..... NOW \$6.36
741-85-0153A, Super 8 (Regularly \$7.95)..... NOW \$6.36
746-85-0064A, Super 8 magnetic sound (Regularly \$16.95)..... NOW \$13.56

What Indians
starring Dean Martin and Joey Bishop
711-85-0288A, Standard 8mm (Regularly \$7.95)..... NOW \$6.36
741-85-0158A, Super 8 (Regularly \$7.95)..... NOW \$6.36
746-85-0079A, Super 8 magnetic sound (Regularly \$16.95)..... NOW \$13.56

**The Creature From
The Black Lagoon**
711-86-0014A, Standard 8mm (Regularly \$7.95)..... NOW \$6.36
741-86-0001A, Super 8 (Regularly \$7.95)..... NOW \$6.36

The Creature Walks Among Us
711-86-0138A, Standard 8mm (Regularly \$7.95)..... NOW \$6.36
741-86-0017A, Super 8 (Regularly \$7.95)..... NOW \$6.36

Doom of Dracula
711-86-0182A, Standard 8mm (Regularly \$7.95)..... NOW \$6.36
741-86-0061A, Super 8 (Regularly \$7.95)..... NOW \$6.36
746-86-0047A, Super 8 magnetic sound (Regularly \$16.95)..... NOW \$13.56

Dracula
with Bela Lugosi
711-86-0266A, Standard 8mm (Regularly \$7.95)..... NOW \$6.36
741-86-0020A, Super 8 (Regularly \$7.95)..... NOW \$6.36
746-86-0001A, Super 8 magnetic sound (Regularly \$16.95)..... NOW \$13.56

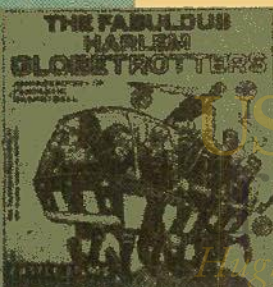
The Deadly Mantis
711-86-0148A, Standard 8mm (Regularly \$7.95)..... NOW \$6.36
741-86-0016A, Super 8 (Regularly \$7.95)..... NOW \$6.36

House of Dracula
with John Carradine
741-86-0169A, Super 8 (Regularly \$7.95)..... NOW \$6.36
746-86-0084A, Super 8 magnetic sound (Regularly \$16.95)..... NOW \$13.56

It Came From Outer Space
711-86-0014A, Standard 8mm (Regularly \$7.95)..... NOW \$6.36
741-86-0027A, Super 8 (Regularly \$7.95)..... NOW \$6.36

Invisible Man
711-86-0274A, Standard 8mm (Regularly \$7.95)..... NOW \$6.36
741-86-0145A, Super 8 (Regularly \$7.95)..... NOW \$6.36
746-86-0056A, Super 8 magnetic sound (Regularly \$16.95)..... NOW \$13.56

The Mummy
with Boris Karloff
711-86-0121A, Standard 8mm (Regularly \$7.95)..... NOW \$6.36
741-86-0022A, Super 8 (Regularly \$7.95)..... NOW \$6.36



The Mummy's Ghost
711-86-0268A, Standard 8mm (Regularly \$7.95)..... NOW \$6.36
741-86-0139A, Super 8 (Regularly \$7.95)..... NOW \$6.36
746-86-0051A, Super 8 magnetic sound (Regularly \$16.95)..... NOW \$13.56

The Mummy's Tomb
711-86-0136A, Standard 8mm (Regularly \$7.95)..... NOW \$6.36
741-86-0018A, Super 8 (Regularly \$7.95)..... NOW \$6.36
746-86-0051A, Super 8 magnetic sound (Regularly \$16.95)..... NOW \$13.56

One Million B.C. with Victor Mature

711-86-0267A, Standard 8mm (Regularly \$7.95)..... NOW \$6.36
741-86-0022A, Super 8 (Regularly \$7.95)..... NOW \$6.36

Revenge Of The Creature

711-86-0265A, Standard 8mm (Regularly \$7.95)..... NOW \$6.36
741-86-0014A, Super 8 (Regularly \$7.95)..... NOW \$6.36
746-86-0049A, Super 8 magnetic sound (Regularly \$16.95)..... NOW \$13.56

Son Of Frankenstein

711-86-0150A, Standard 8mm (Regularly \$7.95)..... NOW \$6.36
741-86-0015A, Super 8 (Regularly \$7.95)..... NOW \$6.36
746-86-0046A, Super 8 magnetic sound (Regularly \$16.95)..... NOW \$13.56



The Trial Of Frankenstein Excerpts from "Ghost of Frankenstein with Bela Lugosi and Lon Chaney

741-86-0148A, Super 8 (Regularly \$7.95)..... NOW \$6.36
746-86-0082A, Super 8 magnetic sound (Regularly \$16.95)..... NOW \$13.56

The Wolfman with Lon Chaney

711-86-0212A, Standard 8mm (Regularly \$7.95)..... NOW \$6.36
741-86-0091A, Super 8 (Regularly \$7.95)..... NOW \$6.36
746-86-0018A, Super 8 magnetic sound (Regularly \$16.95)..... NOW \$13.56

Harlem Globetrotters

711-82-0010A, Standard 8mm (Regularly \$7.95)..... NOW \$6.36
741-82-0006A, Super 8 (Regularly \$7.95)..... NOW \$6.36
746-82-0010A, Super 8 magnetic sound (Regularly \$16.95)..... NOW \$13.56

Fabulous Harlem Globetrotters

741-82-0142A, Super 8 (Regularly \$7.95)..... NOW \$6.36
742-82-0039A, Super 8 color (Regularly \$16.95)..... NOW \$13.56
746-82-0053A, Super 8 magnetic sound (Regularly \$16.95)..... NOW \$13.56
746-82-0003A, Super 8 magnetic sound, color (Regularly \$324.95)..... NOW \$19.95

Dempsey vs. Tunney

711-82-0175A, Standard 8mm (Regularly \$7.95)..... NOW \$6.36
741-82-0056A, Super 8 (Regularly \$7.95)..... NOW \$6.36
746-82-0027A, Super 8 magnetic sound (Regularly \$16.95)..... NOW \$13.56

Ross vs. Armstrong, Zale vs. Graziano

741-82-0087A, Super 8 (Regularly \$7.95)..... NOW \$6.36

Battles for the Crown Jess Willard vs. Frank Moran (1916)

Primo Carnera vs. Jack Sharkey (1933)
Max Baer vs. Max Schmeling (1933)
741-82-0089A, Super 8 (Regularly \$7.95)..... NOW \$6.36



FAMOUS FIGHTS

Louis vs. Furr
Louis vs. Baer
741-82-0096A, Super 8 (Regularly \$7.95)..... NOW \$6.36
746-82-0022A, Super 8 magnetic sound (Regularly \$16.95)..... NOW \$13.56

Johnson vs. Ketchel

Clay vs. Williams
741-82-0095A, Super 8 (Regularly \$7.95)..... NOW \$6.36
746-82-0021A, Super 8 magnetic sound (Regularly \$16.95)..... NOW \$13.56

Louis & Schmeling 1936 & 1938

741-82-0006A, Super 8 (Regularly \$7.95)..... NOW \$6.36
746-82-0026A, Super 8 magnetic sound (Regularly \$16.95)..... NOW \$13.56

Schmeling vs. Walker Louis vs. Godoy

741-82-0113A, Super 8 (Regularly \$7.95)..... NOW \$6.36

CASTLE FILMS

GREAT HEAVYWEIGHT BOUTS

Valdez vs. Jackson
Moore vs. Johnson
Slade vs. Patterson
Louis vs. Marciano

741-82-0005A, Super 8 (Regularly \$7.95)..... NOW \$6.36
746-82-0039A, Super 8 magnetic sound (Regularly \$16.95)..... NOW \$13.56

GREAT LIGHTWEIGHT BOUTS

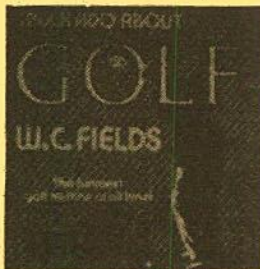
Gavilan vs. Cartier
Pep vs. Perez
Basilio vs. DeMarco
Robinson vs. Olson

711-82-0070A, Standard 8mm (Regularly \$7.95)..... NOW \$6.36
741-82-0090A, Super 8 (Regularly \$7.95)..... NOW \$6.36
746-82-0038A, Super 8 magnetic sound (Regularly \$16.95)..... NOW \$13.56

HISTORIC HEAVY WEIGHT FIGHTS

Primo Carnera vs. Tommy Loughran 1934
Primo Carnera vs. Max Baer 1934
Max Baer vs. James Braddock 1935

711-82-0178A, Standard 8mm (Regularly \$7.95)..... NOW \$6.36
741-82-0117A, Super 8 (Regularly \$7.95)..... NOW \$6.36



Expo 67 Panoramic Tour

742-88-0004A, Super 8 color (Regularly \$16.95)..... NOW \$13.56

Circus Spellbinder

741-89-0011A, Super 8 (Regularly \$7.95)..... NOW \$6.36
746-89-0007A, Super 8 magnetic sound (Regularly \$16.95)..... NOW \$13.56

APOLLO 15

The Rover Expedition On The Moon

742-92-0025A, Super 8, color (Regularly \$16.95)..... NOW \$13.56
746-92-0001A, Super 8 color, magnetic sound (Regularly \$24.95)..... NOW \$19.96

Movies' Great Headlines

741-84-0121A, Super 8 (Regularly \$7.95)..... NOW \$6.36

News Parade of 1971

741-92-0148A, Super 8 (Regularly \$7.95)..... NOW \$6.36

News Parade of 1972

741-92-0156A, Super 8 (Regularly \$7.95)..... NOW \$6.36

New Parade Of 1938

741-92-0159A, Super 8 (Regularly \$7.95)..... NOW \$6.36

746-92-0068A, Super 8 magnetic sound (Regularly \$16.95)..... NOW \$13.56

New Parade Of 1939

741-92-0160A, Super 8 (Regularly \$7.95)..... NOW \$6.36

746-92-0069A, Super 8 magnetic sound (Regularly \$16.95)..... NOW \$13.56

New Parade Of 1940

741-92-0161A, Super 8 (Regularly \$7.95)..... NOW \$6.36

746-92-0070A, Super 8 magnetic sound (Regularly \$16.95)..... NOW \$13.56

New Parade Of 1941

741-92-0162A, Super 8 (Regularly \$7.95)..... NOW \$6.36

746-92-0071A, Super 8 magnetic sound (Regularly \$16.95)..... NOW \$13.56

New Parade Of 1942

741-92-0163A, Super 8 (Regularly \$7.95)..... NOW \$6.36

746-92-0072A, Super 8 magnetic sound (Regularly \$16.95)..... NOW \$13.56

New Parade Of 1943

741-92-0164A, Super 8 (Regularly \$7.95)..... NOW \$6.36

746-92-0073A, Super 8 magnetic sound (Regularly \$16.95)..... NOW \$13.56

New Parade Of 1944

741-92-0165A, Super 8 (Regularly \$7.95)..... NOW \$6.36

746-92-0074A, Super 8 magnetic sound (Regularly \$16.95)..... NOW \$13.56

New Parade Of 1945

741-92-0166A, Super 8 (Regularly \$7.95)..... NOW \$6.36

746-92-0075A, Super 8 magnetic sound (Regularly \$16.95)..... NOW \$13.56

New Parade Of 1946

741-92-0167A, Super 8 (Regularly \$7.95)..... NOW \$6.36

746-92-0076A, Super 8 magnetic sound (Regularly \$16.95)..... NOW \$13.56

Gay 90's Live Again

711-66-0276A, Standard 8mm (Regularly \$7.95)..... NOW \$6.36

741-66-0147A, Super 8 (Regularly \$7.95)..... NOW \$6.36

746-66-0058A, Super 8 magnetic sound (Regularly \$16.95)..... NOW \$13.56

Rudolph Valentino — Idol Of The Jazz Age

711-85-0163A, Standard 8mm (Regularly \$7.95)..... NOW \$6.36

741-85-0044A, Super 8 (Regularly \$7.95)..... NOW \$6.36

746-85-0006A, Super 8 magnetic sound (Regularly \$16.95)..... NOW \$13.56

Yesterday Lives Again

711-66-0275A, Standard 8mm (Regularly \$7.95)..... NOW \$6.36
741-66-0146A, Super 8 (Regularly \$7.95)..... NOW \$6.36

Africa's Vivid Veldt

742-88-0013A, Super 8 color (Regularly \$16.95)..... NOW \$13.56

America's Natural Wonders

742-88-0081A, Super 8 color (Regularly \$16.95)..... NOW \$13.56

California, The Golden State

742-88-0011A, Super 8 color (Regularly \$16.95)..... NOW \$13.56

Fascinating Hong Kong

742-88-0035A, Super 8 color (Regularly \$16.95)..... NOW \$13.56

Greece And Its Beautiful Islands

742-88-0017A, Super 8 color (Regularly \$16.95)..... NOW \$13.56

Gay Paris

742-88-0036A, Super 8 color (Regularly \$16.95)..... NOW \$13.56

Grand Canyon Grandeur

742-88-0030A, Super 8 color (Regularly \$16.95)..... NOW \$13.56

Invitation To Ireland

742-88-0016A, Super 8 color (Regularly \$16.95)..... NOW \$13.56

Hawaii, Enchanted Isle

742-88-0038A, Super 8 color (Regularly \$16.95)..... NOW \$13.56

746-88-0002A, Super 8 magnetic sound, color (Regularly \$24.95)..... NOW \$19.96

Road To Rome

742-88-0037A, Super 8 color (Regularly \$16.95)..... NOW \$13.56

Stockholm, Old And New

742-88-0002A, Super 8 color (Regularly \$16.95)..... NOW \$13.56

Washington, The Nation's Capital

742-88-0012A, Super 8 color (Regularly \$16.95)..... NOW \$13.56

The White House

742-88-0005A, Super 8 color (Regularly \$16.95)..... NOW \$13.56

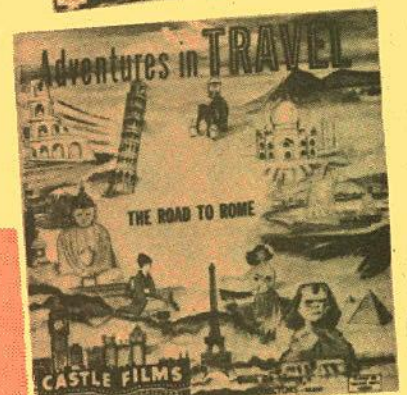
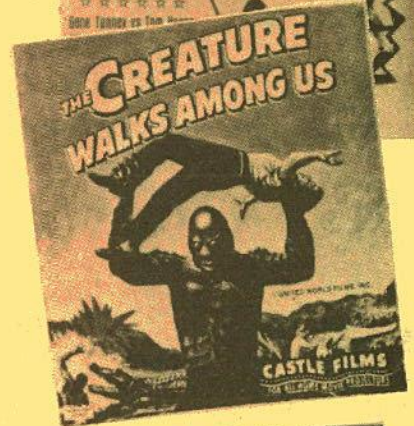
Yosemite Wonderland

742-88-0032A, Super 8 color, 150-feet (Regularly \$16.95)..... NOW \$13.56

ORDER
TODAY
TO INSURE
SPEEDY
DELIVERY

PHONE

800-553-1163



Use Your BankAmericard, Master Charge or Blackhawk Charge



ENCORE COMEDY SALE



(1914)

THE LOVE THIEF

starring **CHESTER CONKLIN**

How to impress the fair maiden? Swipe a watch and pawn it to raise a bit of cash for a good time, of course! Chester's only problem was his carelessness in picking a victim who fought back.

860-10-2651A, Super 8, 155-feet, 11-ozs..... \$6.88
880-10-2621A, Super 8 magnetic sound, music & narration 11-min., 11-ozs..... 9.88



(1917)

WHY BEN BOLTED

(HE LOOKED CROOKED)

starring **BEN TURPIN** with **GYPSY ABBOTT, ED LAURIE** and **ARTHUR MOON**

It's Ben Turpin playing second fiddle to a counterfeiter who passes the bad stuff all around town while the rest of the cast is busy playing April Fool's jokes on each other. But guess who has the last laugh!

860-11-0907A, Super 8, 475-feet, 14-ozs..... \$12.88



(1927)

THE BIG SHOT

starring **SNUB POLLARD** with **MARVIN LOBACK, HARRY MARTEL** and **THELMA DANIELS**

Come along with ace reporter Marvin and his crack photographer Snub as they interview THE BIG SHOT for the story of the year. The city editor can plan on retirement before the assignment is completed, but you'll laugh from beginning to end.

860-08-0938A, Super 8, 450-feet, 14-ozs..... \$12.88



(1927)

MITT THE PRINCE

starring **SNUB POLLARD, MARVIN LOBECK** and **THELMA DANIELS**

As a couple of unhandy handy men, Snub and Marv are the best. Their chance to impersonate the missing Prince at Mrs. Woodby Good's lawn party is too good to pass up and too funny for words.

860-08-1171A, Super 8, 475-feet, 14-ozs..... \$12.88



(1929)

THE RODEO

starring **MARY ANN JACKSON, RAYMOND MCKEE, RUTH HIATT** and **ANDY CLYDE**

The Smith family decides to spend Sunday at a local rodeo — with Grandma, Grandpa, Uncle, the cook, and anyone else who wants to go along. But the problem seems to be in getting there; it isn't as easy as it sounds.

860-10-0927A, Super 8, 400-feet, 14-ozs..... \$12.88



(1910)

WINNING BACK HIS LOVE

starring **WILFRED LUCAS, STEPHANIE LONGFELLOW, VIVIAN PRESCOTT** and **CHARLES WEST**

A well-to-do husband is infatuated by an actress and leaves his wife each night to meet her at the stage door. The wife pretends to husband and the actress. This brings the husband to his senses and he returns home with his wife.

860-34-1015A, Super 8, 250-feet, 11-ozs..... \$6.88
880-34-2626A, Super 8 magnetic sound, music & narration 11 min., 11-ozs..... \$9.88



(1922)

DON'T BE FOOLISH!

starring **BILLY WEST**

Billy can't seem to stay out of trouble, but a beautiful girl sets him on the right path when she gives him her name and address. It turns out to be the wrong one, of course, as Billy finds out in a comedy of errors too hilarious to miss.

860-01-2397A, Super 8, 450-feet, 14-ozs..... \$12.88



(1923)

PAGING LOVE

starring **MONTY BANKS, LOIS BOYD** and **WILLIAM BLAISDELL**

Just imagine opening the door to find super-salesman Monty Banks standing there! Of course, you'd buy a book to help him out if you realized the mess he's in — you see, if all started with this girl...

860-01-1000A, Super 8, 400-feet, 14-ozs..... \$12.88



A DASH THROUGH THE CLOUDS

starring MABEL NORMAND and FRED MACE

(1912)

Early movie makers saved money and made more exciting films by bringing in planes, ships, automobiles and trains, and augmenting the professional actors with the non-professional crews. The airplane had been around less than ten years when A DASH THROUGH THE CLOUDS was made, and the public generally was fascinated with flying. Mabel Normand cools off to the attentions of Fred Mace, a simple salesman, in favor of an airplane pilot with whom she swoops through the skies with the greatest of ease.

860-14-1663A, Super 8, 200-feet, 11-ozs. \$6.88
880-14-2631A, Super 8 magnetic sound, music & narration 9 min., 11-ozs. \$9.88



BEAUTY A LA MUD

starring JIMMY ADAMS, BILLY ENGLE, CHARLOTTE MERRIAM and BLANCHE PAYSON

(1926)

It's mayhem in the beauty parlor when Jimmy tries to disguise his way past father to spoon with Charlotte. Watch our hero work his way into a tight spot and out again, with just a steam cleaning? One of the most popular Christie-comics of the mid-twenties, Adams mixed slapstick with situation comedy and produced a unique kind of comedy which made him stand out from Neal Burns, Jimmy Harrison, Bobby Vernon and other well-known comics who worked under the Christie banner. BEAUTY A LA MUD has special interest today, as it takes place in a beauty parlor of 1926, a far cry from today's luxurious salons.

860-01-0916A, Super 8, 387-feet, 14-ozs. \$12.88



HIS FIRST FLAT TIRE

starring SID SMITH and PAUL PARROT

(1920)

Chauffeur Sid loves Banker Paul's wife. How to separate the two and cut in? Why certainly, introduce Paul to the town's leading vamp and that's exactly what our hero does. Anyway, he was getting tired of her himself and it's hard to find a better patsy than the boss. The action accelerates when Sid and Paul's wife stop off at the bank to leave him a goodbye note, only to find a robbery in progress, and turns into high slapstick at the climax. There must be an easier way to steal a man's wife!

860-01-1519A, Super 8, 225-feet, 11-ozs. \$6.88



HER FAME AND SHAME

starring CHARLIE MURRAY and LOUISE FAZENDA

The High Fliers Burlesque Company is in town and Harry Booker's hash house is selected for the honors — free lunch for all. Harry's not too happy about this — he has a mortgage to pay off and it's due. Sending daughter to the bank for the money, Harry figures he's got it made, but he failed to reckon with the cunning Charlie Murray, who cons Louise out of the \$200 with an IOU promising a half-interest in the show. When Harry learns of the transaction, he troups down to the theatre with the sheriff in tow. The acts are wretched, but Louise steals the show and Charlie steals the cash box.

860-12-1514A, Super 8, 400-feet, 14-ozs. \$12.88



THE GIBSON GODDESS

starring MARION LEONARD, ARTHUR JOHNSON, MACK SENNETT, BILLY QUIRK and KATE BRUCE

(1909)

An attractive girl, pestered by a multitude of admirers at a seaside resort, escapes their attentions when her maid stuffs the legs of her bathing costume with cotton. This device achieves even more than was planned, for in addition to ridding the Gibson Goddess of her false admirers, it serves as a means to retain the one who was true. Marion Leonard was the leading grande dame among the first generation of film actresses. Greatly admired for her beauty, she did not survive importantly into the feature era, though she lived until 1956, when, at 75, she died at Motion Picture Country House. Arthur Johnson, Mack Sennett and James Kirkwood, who appear among her admirers need no identification. Billy Quirk, a female impersonator before and sometimes during his motion picture days, appeared in many Biograph farces with Mary Pickford.

860-34-2644A, Super 8, 150-feet, 11-ozs. \$6.88



THE FEATHERED NEST

starring LOUISE FAZENDA and CHARLEY MURRAY

(1916)

Louise is the rustic belle, Charley is the village dandy who rooms with her father, Newman Haye. Louise also has a faithful young farmer as a suitor. In addition to being the village dandy, Charley is also the telegraph operator, so when a telegram comes indicating that Louise is to inherit the vast wealth of an uncle, he starts in pursuit, too. An elopement almost takes place, headed off by her father and the hired man.

860-10-2641A, Super 8, 437-feet, 14-ozs. \$12.88



MAID MAD

starring CHARLIE MURRAY and LOUISE FAZENDA

(1916)

It's Charlie Murray as the hotel handyman and Louise as the fortune teller in this fast-paced comedy of unrequited love and unpaid rent. Hotelman Harry Booker wires his clerk, Wayland Trask, to collect the unpaid rent — he's coming for it. But Louise can't pay, in fact she's trying to sell a half interest in her fortune telling business for \$600 exactly the amount of her back rent. When Harry arrives, he trudges off to Louise's room. A little bit of charm and he receipts the bill in full.

860-12-1789A, Super 8, 500-feet, 14-ozs. \$12.88



THE NOISE OF BOMBS

starring CHARLIE MURRAY and EDGAR KENNEDY

(1914)

The police chief stands for no plotting on the part of anarchists, and to back up his stand, he has Charlie Murray in reserve. But Charlie makes the best unwilling conspirator you've ever seen and the whole thing ends with a bang. While THE NOISE OF BOMBS was not typical Murray material, it was typical Keystone and a better-than-average example of why Mack Sennett's comedies won such legendary fame over the years. While Charlie was still in search of his own screen character, he was coming closer in appearance and style.

860-12-2649A, Super 8, 230-feet, 14-ozs. \$6.88
880-12-2620A, Super 8 magnetic sound, music & narration 11-min., 11-ozs. \$9.88

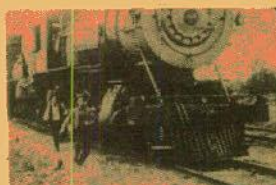
MORE ENCORE MOVIES



MELODRAMA RIDES THE RAILS

In MELODRAMA RIDES THE RAILS we have taken three examples of early movies dealing with different uses of railroading as the subject, or the background for the story, produced by three of the pioneer companies — Edison, Biograph and Vitaphone. The first sequence is RAILROAD SMASHUP (Edison, 1904) which pictures the head-on collision of two 4-4-0 steam locomotives... a favorite attraction of major fairs throughout the country well into the 1920s. The second sequence, A RAILWAY TRAGEDY (Biograph, 1904) is an early story film, really only a single episode, filmed in England. And the third and major sequence is A MOTHER'S DEVOTION (Vitaphone, 1911) which was also released as THE FIRING OF THE PATCHWORK QUILT. It is a typical example of the overemotional years before World War I.

860-45-2256A, Super 8, 250-feet, 11-ozs..... \$6.88



IN DANGER'S PATH

From "THE HAZARDS OF HELEN"
starring HELEN HOLMES

(1917)

IN DANGER'S PATH was episode 33 of THE HAZARDS OF HELEN, the weekly series of one reel railroad thrillers produced by Kalem. IN DANGER'S PATH is the story of railroad detectives on the trail of a gang that has been looting freight cars enroute. There's an unusual amount of action in this one aboard a train, for Helen gets in the way and is locked inside a refrigerator car which then catches fire because of Helen building a fire inside in order to keep warm.

860-44-2254A, Super 8, 250-feet, 11-ozs..... \$6.88
880-44-2254A, Super 8 magnetic sound, music 11 min., 11-ozs..... \$9.88



THE MESSAGE OF THE VIOLIN

starring STEPHANIE
LONGFELLOW, CHARLES
WEST, ALFRED PAGET,
GRACE HENDERSON and
DELL HENDERSON

(1910)

Directed by D. W. Griffith and photographed by Billy Bitzer, MESSAGE OF THE VIOLIN is typical of the moral melodramas of the first years of the century. Stephanie is in love with Charles. Her family inherits a fortune while Charles supports his mother and drunken father by playing for cheap entertainments. His first professional appearance? At the wedding for Stephanie and the count. But Stephanie recognizes "their song" in a melody melody from these sirlings moves her more than all my honors and fities.

860-34-1539A, Super 8, 250-feet, 11-ozs..... \$6.88



THROUGH DARKENED VALES

starring BLANCHE SWEET,
CHARLES WEST, JOSEPH
GRAYBILL, KATE BRUCE,
CHARLES HILL MAILES and
GRACE HENDERSON

(1911)

Just after having rejected one young man and accepted another, a girl is blinded by an explosion in a chafing dish. At the same time, her rejected lover loses his sight through over-application to his work.

860-34-1197A, Super 8, 225-feet, 11-ozs..... \$6.88
880-34-2627A, Super 8 magnetic sound, music & narration 11 min., 11-ozs..... \$9.88



THE SEA GHOST

Produced by THOMAS H. INCE
starring J. T. LOCKNEY,
ARTHUR MAUDE, J. J.
DOWLING and MARGARET
GIBSON

(1915)

THE SEA GHOST is the story of mutiny at sea, the captain set adrift in a barrel, and floating to a tropical island where the girl and her father, victims of a previous disaster at sea, find him. But his own ship and mutinous crew, under the influence of the elements, are driven to this same island.

860-58-2657A, Super 8, 229-feet, 11-ozs..... \$6.88
880-58-2637A, Super 8 magnetic sound, music & narration 11 min., 11-ozs..... \$9.88



SILENT HEROES

Produced by THOMAS H. INCE
starring TOM CHATTERTON
and ESTELLE ALLAN

(1913)

SILENT HEROES is one of Thomas H. Ince's last short films dealing with the Civil War, the story of a young man torn between home and family, and his duty to the South. He was thought to be a coward, but with the passing of his mother, he enlisted in the cause of the Confederacy, and played a hero's part. Unlike Griffith, Ince did not utilize fast cutting. But his action scenes are big, vigorous and convincing, staged with care and intelligent camera placement.

860-58-2655A, Super 8, 230-feet, 11-ozs..... \$6.88
880-58-2638A, Super 8 magnetic sound, music & narration 11 min., 11-ozs..... \$9.88



GOLDEN RULE KATE

starring LOUISE GLAUM, JOHN
GILBERT, JACK RICHARDSON,
MILDRED HARRIS and
WILLIAM CONKLIN

(1917)

Louise Glaum was usually cast as a vamp — a bad girl — who loses the hero, but in GOLDEN RULE KATE she has a rare, sympathetic part. And John Gilbert's goods looks and confident manner were so striking in these early roles, it remains a mystery as to why top-flight stardom eluded him until the mid-twenties. GOLDEN RULE KATE was the work of Reginald Barker, who was still making pictures until the late thirties.

860-58-2648A, Super 8, 263-feet, 11-ozs..... \$6.88
880-58-2638A, Super 8 magnetic sound, music & narration 11 min., 11-ozs..... \$9.88



THE PRIMAL CALL

starring CLAIRE McDOWELL,
JOSEPH GRAYBILL, WILFRED
LUCAS and W. CHRYSTIE
MILLER

(1911)

To please her impecunious but socially ambitious parents, a girl agrees to marry a wealthy but unprincipled man whom she does not love. When they go to the seashore for the summer, she is instantly attracted by a rough diamond whom she finds working there, and after he has had a clash with her prospective bridegroom and knocked him out, she runs off with him.

860-34-2650A, Super 8, 275-feet, 11-ozs..... \$6.88
880-34-2634A, Super 8 magnetic sound, music & narration 11 min., 11-ozs..... \$9.88

DAYS OF MCKINLEY, BRYAN and TEDDY ROOSEVELT



For the most part, the motion picture scenes making up this film were photographed in the 1890's. You'll see The Bowery in New York — crossroads of the world in the 1890's; typical scenes of the great orator, William Jennings Bryan; Teddy Roosevelt and the Rough Riders on return from Cuba; etc.

860-76-2642A, Super 8, 147-feet, 11-ozs..... \$6.88



(1912)

THE LESSER EVIL

starring **BLANCHE SWEET, MAE MARSH, EDWIN AUGUST, ALFRED PAGET, CHARLES HILL MAILES and CHARLES WEST**

Keeping a rendezvous with her brave and gallant fisherman-lover, a fisher maiden stumbles into a hut where a gang of smugglers has taken refuge. Because they are afraid of detection if they let her go, they force her to go on board their ship with them.

860-34-2646A, Super 8, 225-feet, 11-ozs..... \$6.88
880-34-2633A, Super 8 magnetic sound, music & narration 11 min., 11-ozs..... \$9.88



(1908)

CROSSROADS OF LIFE

starring **MARION LEONARD, D. W. GRIFFITH, CHARLES INSLEE and BOBBY HARRON**

Marion Leonard, daughter of a clergyman, Charles Inslee, runs away from home for a life in the theatre. Her father forsakes her at pass. She is a successful actress.

860-34-2656A, Super 8, 200-feet, 11-ozs..... \$6.88
880-34-2630A, Super 8 magnetic sound, music & narration 11 min., 11-ozs..... \$9.88

THE GODDESS OF SAGEBRUSH GULCH

Directed by **D. W. Griffith**

with **BLANCHE SWEET, DOROTHY BERNARD, CHARLES WEST, W. CHRISTY CABANNE, CHARLES HILL MAILES, W. CHRYSTIE MILLER and ALFRED PAGET**

Gertrude (Blanche Sweet), idolized by rough miners in a Western camp, is saved from a rattlesnake by Tom (Charles West). But when Gertrude's flirtatious and fashionable cousin (Dorothy Bernard) arrives from the East, Tom proves unfaithful.



(1912)

860-34-2647A, Super 8, 220-feet, 11-ozs..... \$6.88
880-34-2632A, Super 8 magnetic sound, music & narration 11-min., 11-ozs..... \$9.88

A CHANGE OF SPIRIT

starring **BLANCHE SWEET and HENRY B. WALTHALL**

An overprotected girl (Blanche Sweet) meets a gentleman thief (Henry B. Walthall) in the park, and is strongly attracted by him. When he accosts her at her door, she invites him in, and he makes off with the house keys, intending to return later with his pal and do a robbery.



(1912)

860-34-2654A, Super 8, 180-feet, 11-ozs..... \$6.88
880-34-2628A, Super 8 magnetic sound, music & narration 11 min., 11-ozs..... \$9.88

THE REVENUE MAN AND HIS GIRL

starring **DOROTHY WEST, EDWIN AUGUST and GLADYS EGAN**

A story of the Kentucky mountains filmed in New Jersey, subtlety and realism make this a highly unusual film for its time; another of Griffith's assaults on the conventional which made his Biographs so popular with audiences.



(1911)

860-34-2652A, Super 8, 200-feet, 11-ozs..... \$6.88
880-34-2623A, Super 8 magnetic sound, music & narration 11 min., 11-ozs..... \$9.88

THE DRUMMER OF THE EIGHTH

starring **CYRIL GOTTLIEB and MILDRED HARRIS**

A young boy runs away from home to join his brother at the front lines as a drummer. While distinguishing himself in action, the lad is wounded and writes that he will soon be home, but it doesn't work out quite as expected.



(1913)

860-58-2645A, Super 8, 232-feet, 11-ozs..... \$6.88
880-58-2636A, Super 8 magnetic sound, music & narration 11 min., 11-ozs..... \$9.88

LILY OF THE TENEMENTS

starring **DOROTHY WEST and GEORGE NICHOLS**

Lily, who supports an invalid mother and a helpless father with her sewing, cannot pay her rent, and the landlord suggests he will forego it for a consideration. She refuses and is saved from destitution by the landlord's son, who returns from college at the right moment and who is attracted to her in the right way.



(1911)

860-34-1005A, Super 8, 225-feet, 11-ozs..... \$6.88
880-34-2622A, Super 8 magnetic sound, music & narration 11 min., 11-ozs..... \$9.88



A SQUAW'S LOVE

starring **MABEL NORMAND, ARTHUR V. JOHNSON, CLAIRE McDOWELL** and **DARK CLOUD**

(1911)

The Chief doesn't care for warriors who trifle with his daughter's affections and anyone foolish enough to disobey pays the penalty, but an exciting canoe chase on the Hudson proves to be the perfect elopement.

860-34-1750A, Super 8, 225-feet, 11-ozs..... \$6.88
880-34-2625A, Super 8 magnetic sound, music & narration 11 min., 11-ozs..... \$9.88



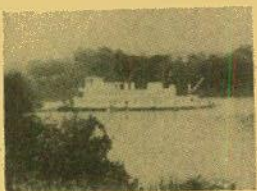
SAVED FROM HIMSELF

starring **JOSEPH GRAYBILL** and **MABEL NORMAND**

(1911)

Joe is a clerk in a hotel where Mabel works in the office. He must have \$2,000 to keep himself from losing a great investment in some stock shares. A wealthy tenant of the hotel deposits a great deal of money in the hotel safe for security which gives Joe access to the greatly needed \$2,000.

860-34-2653A, Super 8, 250-feet, 11-ozs..... \$6.88
880-34-2624A, Super 8 magnetic sound, music & narration 11 min., 11-ozs..... \$9.88



TOWBOAT ON THE RIVER

Here's the film for any one of you who would like to be a modern day Mark Twain or Huck Finn — life today on the great Mississippi River system in the heartland of America. It shows how our river fleets operate today, how the rivermen live, how lacks function, the part radar plays in overcoming the hazards of fog and heavy weather, and how these barge flotillas carry their varied cargoes.

860-76-2640A, Super 8, 191-feet, 11-ozs..... \$6.88
880-76-2338A, Super 8 magnetic sound, music & narration 9 min., 11-ozs..... \$9.88



THE OLYMPIAN HIAWATHA

See the Olympian Hiawatha. The Milwaukee Road streamliner that made the Milwaukee to Seattle-Tacoma run. Passenger service on this section of track has been discontinued for almost twenty years.

860-77-2658A, Super 8, 175-feet, 11-ozs..... \$6.88
880-77-2277A, Super 8 magnetic sound, music & narration 9 min., 11-ozs..... \$9.88



CONFIDENCE

starring **FLORENCE LAWRENCE, ARTHUR JOHNSON** and **CHARLES INSLEE**

(1909)

"CONFIDENCE" is the story of a penniless orphan in a small Western mining town who, rather than starve becomes a partner in a crooked gambling scheme. Appalled by her sordid life, she decides to break away from it all.

860-34-1776A, Super 8, 250-feet, 11-ozs..... \$6.88
880-34-2629A, Super 8 magnetic sound, music & narration 11 min., 11-ozs..... \$9.88



LUBIN'S GREAT TRAIN ROBBERY

Sigmund Lubin, movie-maker in Philadelphia, set out to film his own "Great Train Robbery". Lubin not only took Edison's title, dropping only the "The", but shot his own film following Edison's on almost a scene for scene basis. Lubin had his film ready for release by June of 1904. While the Edison film had been photographed on the Lackawanna Railroad, Lubin arranged to make his on the Reading, convenient to his Philadelphia location. The locomotive "star" of Lubin's version was one of the Reading's 4-4-0 "camel-backs", so-called because the engineer's cab was set in the center and atop the boiler. This engine, the No. 172, had been built in 1883 and was scrapped in 1907.

860-56-2087A, Super 8, 169-feet, 11-ozs..... \$6.88

SUBSCRIPTIONS FOR THE BLACKHAWK "STUFFERS" LISTING:

USED 8mm, SUPER 8 AND 16mm — AND SPECIAL CLOSE-OUT PURCHASES

We have listings of items that we have purchased on a close-out basis or are one of a kind or are used prints that are available for but a fraction of their original retail prices. These films are of limited availability.

We are offering subscriptions by **FIRST CLASS MAIL** on each of the three series: Standard 8mm, Super 8 or 16mm. \$1.30 buys you a subscription of 10 mailings. In short, if you are interested (for example) in Standard 8mm, \$1.30 will get you 10 issues of the Standard 8mm listing. The same is true for Super 8 or 16mm.

Please order the series you want as follows:

No. 100.....	10 mailings of Standard 8mm.....	\$1.30
No. 200.....	10 mailings of Super 8.....	\$1.30
No. 300.....	10 mailings of 16mm.....	\$1.30

You may subscribe for as many mailings as you want in units of 10 for \$1.30. Send \$2.60 for 20, \$3.90 for 30.

Phone Your Order TOLL FREE: 800 — 553-1163 (Not Valid In Iowa)



Use Your BankAmericard, Master Charge or Blackhawk Charge

Paul Terry's

AESOP'S FABLES

SAVE NOW!

These 16mm cartoons are "like new" used gems from the 1920's drawn by cartoonist Paul Terry. Known then as "Aesop's Fables", these Paul Terry delights are in their original silent form in the III series. Musical scores were added in the late 1940's to certain titles which we have in our 110 series. While these 16mm cartoons are in mint condition, we are limited in stock and will fill orders on a first-come basis. Stock up now!

SOUND — 110 SERIES

110-81-0002A All For A Bride
110-81-0006A Beauty Parlor
110-81-0012A Bubble Ride
110-81-0017A Channel Swimmer
110-81-0021A Cutting A Melon
110-81-0027A Early Bird
110-81-0028A Fair Exchange
110-81-0032A First Prize
110-81-0033A A Fish Story
110-81-0038A Fortune Hunters
110-81-0039A Fox Hunt
110-81-0047A Hearts & Flowers
110-81-0051A Love Nest
110-81-0052A On The Ice
110-81-0056A Red Hot Sands
110-81-0062A Secret Council
110-81-0065A Show Time
110-81-0066A Sunny Italy
110-81-0067A Three Game Guys
110-81-0069A Two Slick Traders
110-81-0071A Up In The Air
110-81-0075A Watch Your Weight
110-81-0076A The Water Cure
110-81-0077A Watered Seeds
110-81-0078A Wedding Bells
110-81-0084A Wooden Shoes

SILENT — 111 SERIES

111-81-0024A Aged In Wood
111-81-0025A Air Cooled
111-81-0026A Alaska Or Bust
111-81-0027A All Bull And A Yard Wide
111-81-0028A All For A Bride
111-81-0031A Ant And The Fly
111-81-0032A Anti Fat
111-81-0033A April Showers
111-81-0034A Back To The Soil
111-81-0036A Bars And Stripes
111-81-0037A Baffling Dupe
111-81-0038A Beauty Parlor
111-81-0040A Big Burg
111-81-0041A Big Game
111-81-0042A Big Retreat
111-81-0043A Big Shot
111-81-0044A Big Tent
111-81-0045A Biting The Dust
111-81-0046A Black Sheep
111-81-0047A Blaze Of Glory
111-81-0048A Boastful Cat
111-81-0050A Body In The Bag
111-81-0049A Bonehead Age
111-81-0053A Boyfriend
111-81-0054A Brave Heart
111-81-0055A Break Of Day
111-81-0059A Broncho Buster
111-81-0056A Bubbles
111-81-0061A Bubbling Over
111-81-0057A Buck Fever
111-81-0058A Buggy Ride
111-81-0060A Bumper Crops
111-81-0062A Burglar Alarm
111-81-0063A By Land And Air
111-81-0064A Captain Kidder
111-81-0065A Carnival Week
111-81-0066A Cat Came Back
111-81-0070A Cat That Failed
111-81-0071A Caught In The Draft
111-81-0072A Champion
111-81-0074A Chop Suey Noodles
111-81-0075A Christmas Cheer
111-81-0077A Closer Than A Brother
111-81-0078A Coast To Coast
111-81-0079A Cold Steel
111-81-0082A Concentrate
111-81-0081A Cop's Bride
111-81-0083A County Fair
111-81-0084A Cracked Ice
111-81-0086A Crawl Stroke Kid
111-81-0086A Cross Country Run
111-81-0087A Cure Or Kill
111-81-0088A Custard Pie
111-81-0089A Cuddling A Melon
111-81-0091A Dark Horse
111-81-0097A Dark Horse
111-81-0092A Day By Day

111-81-0090A Darkest Africa
111-81-0092A Day By Day
111-81-0093A Day Off
111-81-0094A Days Outing
111-81-0095A Deep Stuff
111-81-0096A Derby Day
111-81-0097A Died In The Wool
111-81-0098A Digging For Gold
111-81-0099A Dissatisfied Cobbler
111-81-0106A Do Women Pay
111-81-0101A Dog And Thief
111-81-0107A Dogs And Wolves
111-81-0108A Dog's Day
111-81-0109A Dog's Paradise
111-81-0104A Doughboys
111-81-0105A Down On The Farm
111-81-0008A Dreamer's Fish
111-81-0108A Early Bird
111-81-0109A Echoes Of The Alps
111-81-0110A Elephant's Trunk
111-81-0111A Enchanted Flute
111-81-0112A Eternal Triangle
111-81-0113A Everybody's Flying
111-81-0114A Fair Exchange
111-81-0116A Farm Hands
111-81-0115A Farmer's Goat
111-81-0115A Farmer Alfalfa's Bride
111-81-0119A Fast Worker
111-81-0120A Fearless Fido
111-81-0121A Fight Game
111-81-0123A Fish Day
111-81-0126A Fish Story
111-81-0016A Fisherman's Jinx
111-81-0124A Fisherman's Luck
111-81-0125A Fishing Pools
111-81-0127A Flight That Failed
111-81-0133A Fly Time
111-81-0129A Flying Carpet
111-81-0128A Flying Ace
111-81-0131A Flying Fishes
111-81-0132A Flying Hoofs
111-81-0003A For The Love Of A Gal
111-81-0134A Fox Hunt
111-81-0138A Frog And Crow

111 Series 16mm B/W
silent, Reg. 4.98.....

110 Series 16mm B/W
sound, Reg. 9.98.....

111-81-0139A Game Hunter
111-81-0140A Good Old College Days
111-81-0141A Good Ship Nellie
111-81-0142A Grandma's House
111-81-0144A Great Open Spaces
111-81-0145A Grilled Demons
111-81-0146A Gun Shy
111-81-0147A Happy Days
111-81-0148A Hard Cider
111-81-0150A Hated Rivals
111-81-0151A Hearts And Flowers
111-81-0152A Henpecked Harry
111-81-0153A Henry's Busted Romance
111-81-0154A Her Ben
111-81-0155A Hero Wins
111-81-0156A High Flyer
111-81-0157A High Stakes
111-81-0158A High Seas
111-81-0159A Hitting The Rails
111-81-0161A Hole In One
111-81-0163A Home Sweet Home

111-81-0160A Homeless Cats
111-81-0162A Homeless Pups
111-81-0165A Honor System
111-81-0164A Honor Man
111-81-0164A Hook, Line And Sinker
111-81-0167A Horses, Horses, Horses
111-81-0168A Hungry Hounds
111-81-0170A Hunter And His Dog
111-81-0177A Huntsmen
111-81-0172A Ideal Farm
111-81-0174A In Again Out Again
111-81-0175A In Dutch
111-81-0173A In His Cups
111-81-0177A In The Bag
111-81-0178A In The Rough
111-81-0179A Jealous Fisherman
111-81-0180A Jolly Jailbird
111-81-0181A Jolly Rounders
111-81-0182A June Bride
111-81-0184A Jungle Sport
111-81-0183A Jungle Days
111-81-0187A Jungle Triangle
111-81-0187A Keep Off The Grass
111-81-0188A Kidnapped
111-81-0189A Lighter Than Air
111-81-0190A Lion And The Monkey
111-81-0191A Liquid Dynamite
111-81-0192A Little Brown Jug
111-81-0004A Little Nell
111-81-0018A Little Game Hunter
111-81-0193A Love Nest
111-81-0194A Magician
111-81-0195A Magnetic Bat
111-81-0196A Mail Coach
111-81-0196A Mail Man
111-81-0197A Man Who Laughed
111-81-0005A Medicine Mad
111-81-0199A Merry Blacksmith
111-81-0200A Message From The Sea
111-81-0201A Mice In Council
111-81-0202A Midsummer Day
111-81-0204A Model Dairy

111-81-0206A Monkey Love
111-81-0207A More Mice Than Brains
111-81-0208A Morning After
111-81-0209A Mouse's Bride
111-81-0019A Musical Parrot
111-81-0211A Mysterious Hat
111-81-0210A Mysteries Of The Sea
111-81-0212A Noah And His Troubles
111-81-0213A Nuts And Squirrels
111-81-0214A Office Help
111-81-0215A On The Ice
111-81-0216A One Game Pup
111-81-0217A One Good Turn
111-81-0219A One Hard Pull
111-81-0220A Organ Grinders
111-81-0221A Our Little Nell
111-81-0222A Outnumbered
111-81-0222A Owl And The Grasshopper
111-81-0224A Pace That Kills
111-81-0224A Pearl Divers
111-81-0225A Permanent Waves

111-81-0226A Pie-Eyed Piper
111-81-0227A Polar Flight
111-81-0228A Puppy Love
111-81-0229A Queen Bee
111-81-0230A Radio Controlled
111-81-0231A Rats In His Garret
111-81-0232A Rat's Revenge
111-81-0234A Red Hot Sands
111-81-0233A Rich Cat, Poor Cat
111-81-0235A Ride 'Em Cowboy
111-81-0236A River Of Doubt
111-81-0237A Road House
111-81-0238A Rolling Stone
111-81-0239A Rooster And The Eagle
111-81-0240A Rough And Ready
111-81-0241A Runaway Balloon
111-81-0242A Running Wild
111-81-0243A Rural Romance
111-81-0256A S.O.S.
111-81-0244A Saved By A Keyhole
111-81-0245A Scaling The Alps
111-81-0246A Scrambled Eggs
111-81-0247A She's In Again
111-81-0248A Shootin' Fool
111-81-0249A Short Circuit
111-81-0250A Sink or Swim
111-81-0251A Skating Hounds
111-81-0252A Smalltown Sheriff
111-81-0252A Snapping The Whip
111-81-0253A Snow Birds
111-81-0254A Soap
111-81-0255A Son Shower
111-81-0257A Spanish Love
111-81-0259A Spider's Lair
111-81-0258A Spider And The Fly
111-81-0260A Spooks
111-81-0261A Sport Of Kings
111-81-0262A Springtime
111-81-0263A Static
111-81-0264A Stork's Mistake
111-81-0265A Subway Sally
111-81-0266A Sunday On The Farm
111-81-0267A Sunny Italy
111-81-0268A Sweet Adeline
111-81-0269A Taking The Air
111-81-0270A That Old Can Of Mine
111-81-0271A Thoroughbreds
111-81-0272A Three Game Guys
111-81-0274A Through Thick And Thin
111-81-0273A Tiger And The Donkey
111-81-0275A Travelling Salesman
111-81-0276A Troubles On The Ark
111-81-0278A Two Explorers
111-81-0277A Two Of A Trade
111-81-0280A Two Slick Traders
111-81-0279A Two Trappers
111-81-0281A Up In The Air
111-81-0283A Venus Of Venice
111-81-0282A Venus And The Cat
111-81-0284A Villain In Disguise
111-81-0285A Walrus Hunters
111-81-0286A Wandering Minstrels
111-81-0287A War Bride
111-81-0288A Wash Day
111-81-0289A Water Cure
111-81-0290A Watered Stock
111-81-0291A When Friendship Ceases
111-81-0292A When Snow Flies
111-81-0293A When Winter Comes
111-81-0294A White Elephant
111-81-0295A Why Argue
111-81-0296A Wicked City
111-81-0297A Windblowers
111-81-0298A Window Washers
111-81-0299A Wine, Women And Song
111-81-0301A Wolf And The Kid
111-81-0300A Wolf And The Crane
111-81-0302A Wolf In Sheep's Clothing
111-81-0303A Women And The Hen
111-81-0305A Woodchoppers
111-81-0304A Woodchoppers
111-81-0306A Yarn About Yarn

Blackhawk Indianhead symbol is a registered trademark of Blackhawk Films, Inc.

Phone Your Order TOLL FREE: 800 — 553-1163 (Not Valid In Iowa)