

# BLACKHAWK'S BIG AUGUST-SEPTEMBER SALE!

This is the first of three consecutive Blackhawk Bargain Bulletins that will cover Blackhawk's Big August-September Sale! Sale prices will be effective upon delivery of each of these special Bargain Bulletins and remain in effect on orders received by Blackhawk through Monday, September 28! This is your chance to make some of the biggest savings yet in cameras, projectors, supplies and equipment, and on motion picture and slide subjects! Order now from the group of bargains listed here, and be on the lookout for the second and third issue which will cover more attractive buys!

## Now Available in 16mm. Silent!

In response to numerous requests, we are making available in 16mm. silent form several additional "Collector's Films" from the early days of the movies, previously available in 8mm. width only. Prints should be available for prompt shipment!

- 620-27 THE FIRST 500-MILE INDIANAPOLIS SPEEDWAY RACE, 1911 (300-feet), pp. 14c..... \$14.98
- 620-28 THE GREAT TRAIN ROBBERY (300-feet), pp. 14c..... \$14.98
- 620-25 THE LONEDALE OPERATOR (400-feet), directed by D. W. Griffith, with Blanche Sweet, pp. 14c..... \$19.98
- 620-24 ON A GOOD OLD FIVE CENT TROLLEY RIDE (300-feet), pp. 14c..... \$14.98
- 620-26 TANGO TANGLES (300-feet), with Charlie Chaplin, Fatty Arbuckle, Ford Sterling, pp. 14c..... \$14.98

## Unique!

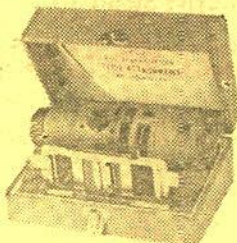
### THE NEW ALPEX "500" MOVIE PROJECTOR and 2"x2" SLIDE ATTACHMENT



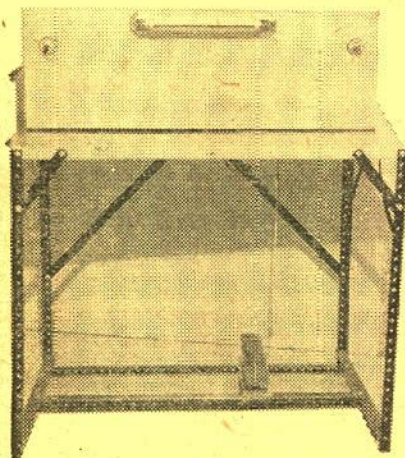
### ALPEX "500" MOVIE PROJECTOR

A precision made Japanese import that carries out the quality standards so widely in evidence in the 35mm. cameras imported from Japan in the last few years. A beautifully constructed, compact projector housed in a self-contained case. Has an extra fast f:1.4 projection lens of wide screen focal length, variable speed control, automatic rewind, swing-out film gate. Takes up to 400-ft. reels of film. Has 500-watt projection lamp. Importer's list price, \$69.95. 30-22, pp. 87c. Blackhawk priced at only \$47.95

### ALPEX 2"x2" SLIDE KIT



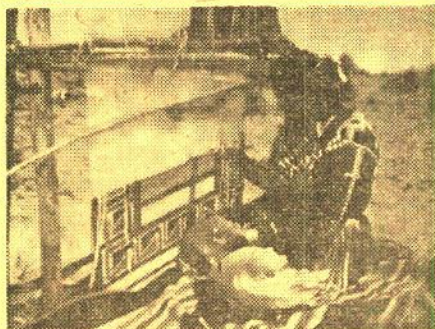
This slide attachment kit transforms the Alpex "500" 8mm. Movie Projector into a 500-watt 2"x2" Slide Projector. Kit contains lens and slide changer. Importer's list price, \$24.95. 30-24, pp. 39c. Blackhawk priced at only \$17.95



## Special!

### TWO GOOD USED FOSTER 16mm. REWIND UNITS

We have two good used 16mm. Foster Power Rewind Units, cost new \$450.00 each. These units are built into a desk high assembly with single foot control not only governing speed, but the degree of braking required. As speed is increased, hold-back on film is lightened automatically—as speed is decreased, hold-back is increased. Stopping is much like the feed reel on a tape recorder—almost instantaneous. Takes up to 2000-ft. 16mm. reels—drives in either direction, left to right, or right to left. Has 12-inch tubular illuminator lamp for operator. All metal construction finished in gray enamel. An excellent unit for the school or small library—and available from Blackhawk at but a fraction of its usual cost new. Foster 16mm. Rewind Units, good used condition (transportation extra), price each..... \$149.95

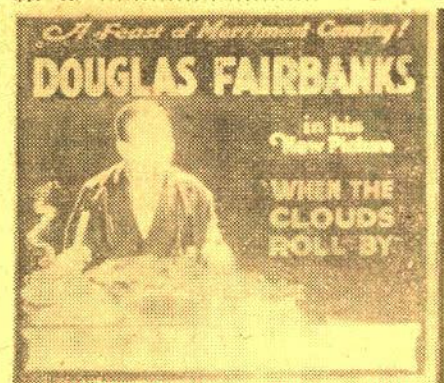


### NAVAJOLAND TODAY

(40 2"x2" Color Slides)  
This spectacularly colorful new 2"x2" slide set might have jumped right out of the pages of National Geographic for photographer Charles Herbert illustrated a National Geographic article on much the same subject a year or two ago.

This set shows much in Navajo life—and the Navajo country—spanning activity from the traditional spinning, weaving and shucking corn—saw painting—arts and crafts—to their adaptation of the white man's modern methods of sheep raising, oil exploration, uranium mining and an action filled rodeo. Many strikingly beautiful shots of the Navajo country are shown as well.

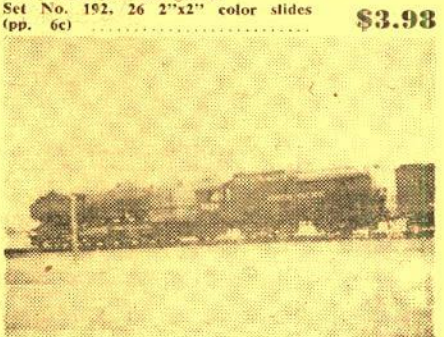
We consider this one of the most satisfactory color slide sets we've yet issued! Set No. 186, 40 2"x2" color slides \$5.98 (pp. 6c)



### WITH AN ALL STAR CAST

(26 2"x2" Color Slides)  
Here's a new Blackhawk color slide set prepared especially for the avid collector of historical motion picture material. It is made up of such coming attraction slide reproductions as "On the Night Stage" with William S. Hart, "Peggy" with Billie Burke, "The Good Bad Man" with Douglas Fairbanks, "Wild Winship's Widow" with Dorothy Dalton, "Molly Entangled" with Vivian Martin, "Rose of the World" with Elsie Ferguson, "Mrs. Dane's Defense" with Pauline Frederick, "The Haunted Bedroom" with Enid Bennett, "Prunella" with Marguerite Clark, "The Broken Melody" with Eugene O'Brien, "Through the Back Door" with Mary Pickford—and fifteen others of the years 1915 to 1926. All of these 2"x2" color slides are direct reproductions from the original 3 1/4"x4" stereopticon slides of the period in which the films themselves were made.

Slide sets of this type have previously had an enthusiastic—but short lived—reception, because most collectors have jumped right in to purchase as soon as the set was announced. We do not believe, therefore, that this set will be continued in availability for longer than six to twelve months. Better order, therefore, while you can get it. Set No. 192, 26 2"x2" color slides \$3.98 (pp. 6c)



### ALONG THE OVERLAND ROUTE

(20 2"x2" Color Slides)  
A new set photographed by Dick Nuemiller showing much of the representative power of the Union Pacific from the Grand Island area in Nebraska on west to the rugged country west of Cheyenne in Wyoming. Included are shots of steam, diesel and turbine-powered trains. Set No. 185, 20 2"x2" color slides \$2.98 (pp. 6c)



## New!

### MAGNETIC BULK TAPE ERASER ROBINS "99" TAPE ERASER

Tape recorder owners can now be assured of greatly improved recordings by removing completely previously recorded and unwanted signals with the Robins 99 Bulk Tape Eraser. It provides superior demagnetizing of tape by reducing the background noise levels of tapes from 3 to 6-db below normal erase head levels. It makes old tapes with accumulated background noise record like new! Easy-to-operate! Quick in performance! Wear on tape! Takes tape reels up to 10-inches in diameter, and tape up to 1/2-inch in width. High signal levels are no problem—it erases everything! Manufacturer's list price, \$24.95.

30-24, pp. 59c. Blackhawk priced at \$17.95 only



### THE LIFE OF BUFFALO BILL with COL. WM. F. CODY

Here is an authentic early film of the West in frontier days filmed by the Buffalo Bill and Pawnee Bill Film Co.—and featuring Col. Wm. F. Cody, himself, in the prologue and epilogue! Produced in 1912, this production is unique, for it represents a very early example of an "independent" production, and one of the first serious American film attempts at a biographical film. And, it is of further importance in that the principal of the biography himself appears in the film.

The subject recounts three episodes in Buffalo Bill's recollections of his experiences on the frontier—The Santa Fe Trail—his duel with the Indian warrior, Yellow Hand—and as a scout for Custer. It is a genuine collectors' item!

Available only in 8mm.!

810-208, about 400-feet, 8mm., on two 5-inch reels, pp. 18c..... \$9.98

## AUGUST-SEPTEMBER

# SCREEN SPECIAL

## RADIANT SCREENMASTER



The new Radiant SCREENMASTER with amazing "truly" lenticular UNIGLOW provides sharp, evenly lighted pictures with slides, movies or filmstrips in color or black and white. Extreme viewing angles mean a bright picture for every seat in the audience... and UNIGLOW is washable, flame proof and fungus proof. Of course, the SCREENMASTER has all deluxe features for beauty and ease of operation. Only \$24.95 for the 30" x 40". (Available up to 70" x 70".)

Bk. No.	Size	List	On Sale at
44-22	30" x 40"	\$34.95	\$24.95
44-23	40" x 40"	\$36.95	\$26.95
44-24	37" x 50"	\$43.95	\$29.95
44-25	50" x 50"	\$47.95	\$34.95
44-26	45" x 60"	\$53.95	\$36.95
44-27	60" x 60"	\$59.95	\$39.95
44-28	52" x 70"	\$59.95	\$39.95
44-29	70" x 70"	\$64.95	\$44.95

## OTHER RADIANT SCREEN VALUES

### RADIANT METEOR

Popular priced tripod screen with Hi-Flect glass beaded surface, fungus resistant and washable.

Our No.	Size	List	On Sale at
44-01	30" x 40"	\$12.95	\$ 7.95
44-06	40" x 40"	\$14.95	\$ 9.95
44-16	37" x 50"	\$18.95	\$11.95
44-10	50" x 50"	\$20.95	\$12.95

### RADIANT "EC" WALL AND CEILING SCREEN

Top efficiency large auditorium screen. Dual purpose hangers for either wall or ceiling; Hi-Flect fine grain glass beaded surface.

Our No.	Size	List	On Sale at
43-01	6'x8'	\$ 96.00	\$ 59.95
43-02	7'x9'	\$106.00	\$ 74.95
43-03	8'x8'	\$102.00	\$ 74.95
43-04	8'x10'	\$127.00	\$ 87.95
43-05	9'x9'	\$115.00	\$ 84.95
43-06	9'x12'	\$175.00	\$119.95
43-07	10'x10'	\$138.00	\$ 94.95
43-08	12'x12'	\$195.00	\$129.95

### RADIANT "W" WALL SCREEN

High quality map-type screen with Vyna-Flect glass beaded surface, fungus and flame proof, and washable. Housed in lightweight, sturdy metal case in streamlined design. Supplied with dual purpose brackets for mounting from either wall or ceiling. Fabric rolls up or down smoothly and effortlessly—hangs evenly for truly enjoyable projection.

Our No.	Size	List	On Sale at
43-10	37" x 50"	\$17.95	\$12.95
43-11	40" x 40"	\$14.45	\$10.95
43-12	45" x 60"	\$27.50	\$19.95
43-13	50" x 50"	\$20.50	\$14.95
43-14	52" x 70"	\$37.50	\$24.95
43-15	60" x 60"	\$33.00	\$24.95
43-16	83" x 84"	\$54.95	\$37.95
43-17	70" x 70"	\$43.50	\$29.95
43-18	72" x 96"	\$69.95	\$49.95
43-19	84" x 84"	\$62.50	\$44.95

SCREENS, BECAUSE OF DIMENSIONS, ARE NOT MAILEABLE AND ARE THEREFORE NORMALLY SHIPPED BY EXPRESS, YOU PAY TRANSPORTATION ON DELIVERY. NO. C.O.D. SHIPMENTS ON SCREENS.



# Blackhawk Films

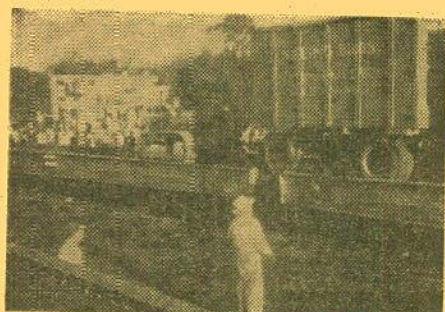
DAVENPORT, IOWA



# Blackhawk's 2"x2" COLOR SLIDES

## SPECTACULAR FULL COLOR SLIDES FOR AS LITTLE AS 11¢ EACH

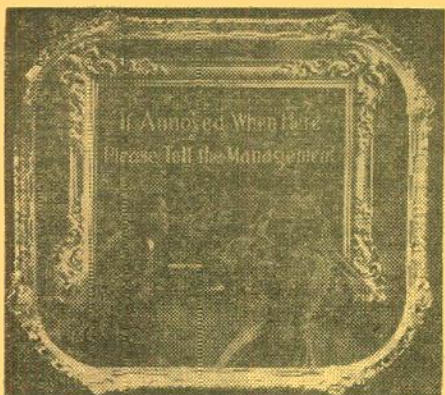
—when purchased in sets!



"CIRCUS TRAIN—LAST DAYS OF THE BIG TOP"

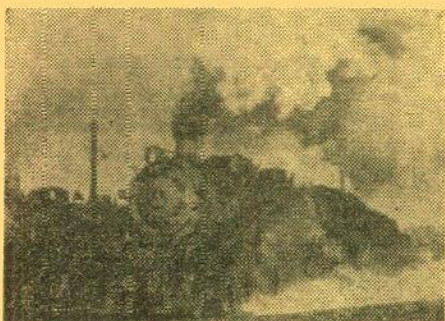
### The Circus

CIRCUS, 1875 (No. 110, 13 slides), reg. \$1.98, on sale at \$1.43  
CIRCUS TRAIN—LAST DAYS OF THE BIG TOP (No. 74, 30 slides), reg. \$4.59, on sale at \$3.30



### Intermission Slides from Nickelodeon Days

ADJUSTING FILM, SHOW WILL CONTINUE IN A FEW MINUTES (No. 150, 10 slides), reg. \$1.98, on sale at \$1.60  
COMING SUNDAY (No. 78, 20 slides), reg. \$2.98, on sale at \$2.20  
IF ANNOYED WHEN HERE, PLEASE TELL THE MANAGEMENT (No. 151, 14 slides), reg. \$2.49, on sale at \$2.24  
ONE MOMENT PLEASE! (No. 76, 17 slides), reg. \$2.29, on sale at \$1.87



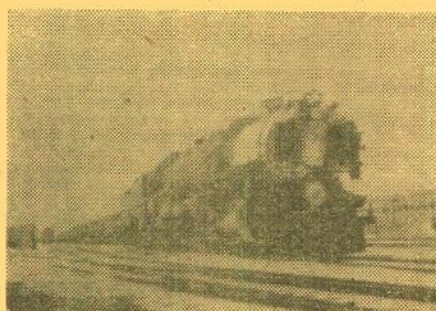
"BALTIMORE & OHIO 2-8-2s AT NORTH VERNON, INDIANA"

### Railroad Slides

Note: A few sets of our Railroad Slides are available in black and white only, and are so offered in the listing below.

ABOARD THE MOJAVE LOCAL (No. 168, 13 slides), reg. \$1.98, on sale at \$1.43  
ANTONIO TO SILVERTON ON THE NARROW GAUGE (No. 176, 13 slides), reg. \$1.98, on sale at \$1.43  
BALTIMORE AND OHIO 2-8-2s AT NORTH VERNON, INDIANA (No. 148, 13 slides), reg. \$1.98, on sale at \$1.43  
BESSEMER AND LAKE ERIE (No. 24, 14 black and white slides), reg. \$1.49, on sale at \$1.39  
CANADIAN NATIONAL STEAM LOCOMOTIVES (No. 169, 13 slides), reg. \$1.98, on sale at \$1.43  
THE CALIFORNIA ZEPHYR IN FEATHER RIVER CANYON (No. 3a, 20 slides), reg. \$2.98, on sale at \$2.20  
CAROLINA SHORT LINE (No. 42, 19 slides), reg. \$2.98, on sale at \$2.09  
CHICAGO-TWIN CITIES STREAMLINERS (No. 65, 33 slides), reg. \$4.98, on sale at \$3.63  
CIRCUS TRAIN—LAST DAYS OF THE BIG TOP (No. 74, 30 slides), reg. \$4.59, on sale at \$3.30  
CIVIL WAR RAILROADS (No. 26, 13 slides), reg. \$1.98, on sale at \$1.43  
DONNER PASS ON THE SOUTHERN PACIFIC (No. 128, 16 slides), reg. \$2.49, on sale at \$1.76  
GUNNISON BRANCH, RIO GRANDE NARROW GAUGE (No. 180, 11 slides), reg. \$1.69, on sale at \$1.32  
THE HIGH SIERRAS FROM A CABOOSE (No. 129, 13 slides), reg. \$1.98, on sale at \$1.43  
HORSESHOE CURVE, PENNSYLVANIA RAILROAD (No. 22, 76 black and white slides), reg. \$5.98, on sale at \$5.22  
ILLINOIS CENTRAL—STEAM ACROSS THE PRAIRIE (No. 64, 16 slides), reg. \$2.49, on sale at \$1.76  
ILLINOIS TERMINAL TROLLEYS (No. 162, 8 slides), reg. \$1.29, on sale at 96¢  
INTERURBANS ON THE ILLINOIS TERMINAL (No. 179, 18 slides), reg. \$2.89, on sale at \$1.98  
IOWA ELECTRIC RAILWAYS (No. 117, 20 slides), reg. \$2.98, on sale at \$2.20

KANSAS CITY TERMINAL (No. 73, 18 slides), reg. \$2.79, on sale at \$1.98  
NEW YORK CENTRAL STEAM LOCOMOTIVES AT INDIANAPOLIS (No. 125, 13 slides), reg. \$1.98, on sale at \$1.43  
NORFOLK & WESTERN 4-8-0s (No. 171, 13 slides), reg. \$1.98, on sale at \$1.43  
NORFOLK & WESTERN 4-8-4s (No. 172, 13 slides), reg. \$1.98, on sale at \$1.43  
NICKEL PLATE (2-8-4s) (No. 126, 13 slides), reg. \$1.98, on sale at \$1.43  
NORFOLK AND WESTERN (No. 27a, 32 slides), reg. \$4.98, on sale at \$3.52  
PENNSY STEAM LOCOMOTIVES (No. 109, 13 slides), reg. \$1.98, on sale at \$1.43  
RAILROADS U. S. A. (No. 17, 47 slides), reg. \$6.98, on sale at \$5.17  
RIO GRANDE NARROW GAUGE (No. 53, 20 slides), reg. \$2.98, on sale at \$2.20  
RAILROADING DOWN UNDER ON SOUTH AUSTRALIAN RAILWAYS (No. 170, 15 slides), reg. \$2.49, on sale at \$1.65  
THE "ROARIN' ELGIN"—THE C. A. & E. (No. 178, 10 slides), reg. \$1.49, on sale at \$1.20



"STEAM LOCOMOTIVES IN COLORADO AND WYOMING"

STEAM LOCOMOTIVES IN COLORADO AND WYOMING (No. 177, 20 slides), reg. \$2.98, on sale at \$2.20  
STEAM LOCOMOTIVES ON THE NORFOLK & WESTERN (No. 173, 13 slides), reg. \$1.98, on sale at \$1.43  
ST. LOUIS TERMINAL (No. 147, 20 slides), reg. \$2.98, on sale at \$2.20  
THE SANTA FE CHIEFS (No. 40, 30 color slides), reg. \$3.98, on sale at \$3.30  
THE SANTA FE—YESTERDAY AND TODAY (No. 23, 57 black and white slides), reg. \$4.49, on sale at \$3.92  
SEABOARD STEAM LOCOMOTIVES (No. 115, 56 black and white slides), reg. \$4.98, on sale at \$4.42  
STEAM LOCOMOTIVES ON THE ILLINOIS CENTRAL (No. 163, 13 slides), reg. \$1.98, on sale at \$1.43  
SOUTHERN RAILWAY STEAM LOCOMOTIVES (No. 65, 60 black and white slides), reg. \$4.98, on sale at \$4.38  
TEHACHAPI (No. 167, 20 slides), reg. \$2.98, on sale at \$2.20  
VIRGINIAN RAILROAD STEAM LOCOMOTIVES (No. 10, 23 slides), reg. \$3.79, on sale at \$2.53



"THE NORTHERN LIGHTS"

### Travel Slides—North America

ANIMALS OF YELLOWSTONE NATIONAL PARK (No. 66, 30 slides), reg. \$4.49, on sale at \$3.30  
AUTUMN AND WINTER IN YELLOWSTONE NATIONAL PARK (No. 67, 12 slides), reg. \$1.89, on sale at \$1.32  
AUTUMN IN YOSEMITE (No. 134, 17 slides), reg. \$2.49, on sale at \$1.87  
AUTUMN'S PAINTBRUSH IN NEW MEXICO (No. 165, 13 slides), reg. \$1.98, on sale at \$1.43  
BANFF AND LAKE LOUISE (No. 96, 8 slides), reg. \$1.49, on sale at 96¢  
THE BLUE GRASS STATE, KENTUCKY (No. 21, 18 slides), reg. \$2.49, on sale at \$1.98  
BRIGHT LIGHTS OF BROADWAY (No. 135, 26 slides), reg. \$3.98, on sale at \$2.86  
BRYCE CANYON NATIONAL PARK (No. 61, 16 slides), reg. \$2.49, on sale at \$1.76  
THE CABLE CARS OF SAN FRANCISCO (No. 57, 20 slides), reg. \$2.98, on sale at \$2.29  
FABULOUS FLORIDA (No. 14, 50 slides), reg. \$6.98, on sale at \$5.50  
GEYSERS AND HOT SPRINGS OF YELLOWSTONE (No. 68, 30 slides), reg. \$4.49, on sale at \$3.30  
GRAND CANYON TRAILS (No. 58, 24 slides), reg. \$3.69, on sale at \$2.64  
MIGHTY NIAGARA (No. 164, 12 slides), reg. \$1.89, on sale at \$1.32  
NEIGHBOR MEXICO (No. 5, 51 slides), reg. \$6.98, on sale at \$5.61  
NEW ENGLAND AUTUMN (No. 111, 13 slides), reg. \$1.98, on sale at \$1.43  
THE NORTHERN LIGHTS (No. 158, 10 slides), reg. \$1.49, on sale at \$1.20  
THE PACIFIC NORTHWEST (No. 15, 35 slides), reg. \$4.98, on sale at \$3.85  
THE PANAMA CANAL (No. 43, 19 slides), reg. \$2.98, on sale at \$2.09  
PEAKS, PARKS AND PASSES IN COLORADO (No. 59, 24 slides), reg. \$3.69, on sale at \$2.64



"SKI TIME AT ASPEN"

SAN FRANCISCO AFTER DARK (No. 107, 15 slides), reg. \$2.39, on sale at \$1.63  
SAN FRANCISCO, THE BAY AND THE BRIDGES (No. 108, 20 slides), reg. \$2.98, on sale at \$2.20  
SAN FRANCISCO—FISHERMAN'S WHARF (No. 104, 16 slides), reg. \$2.49, on sale at \$1.76  
SAN FRANCISCO IN SPRINGTIME (No. 105, 20 slides), reg. \$2.98, on sale at \$2.20  
SIGHTSEEING IN SAN FRANCISCO (No. 106, 20 slides), reg. \$2.98, on sale at \$2.20  
SKI TIME IN ASPEN (No. 70, 16 slides), reg. \$2.49, on sale at \$1.76  
TETON NATIONAL PARK (No. 98, 8 slides), reg. \$1.49, on sale at 96¢  
THIS IS NEW ENGLAND (No. 18, 35 slides), reg. \$4.69, on sale at \$3.85  
TRAIL RIDGE ROAD, ROCKY MOUNTAIN NATIONAL PARK (No. 149, 16 slides), reg. \$2.49, on sale at \$1.76  
TWO MILES HIGH IN ROCKY MOUNTAIN NATIONAL PARK (No. 72, 20 slides), reg. \$2.98, on sale at \$2.20  
WASHINGTON ON THE POTOMAC (No. 29, 31 slides), reg. \$4.49, on sale at \$3.41  
YELLOWSTONE—THE GRAND CANYON, FALLS, RIVERS AND LAKE (No. 142, 13 slides), reg. \$1.98, on sale at \$1.43



"MADRID AND TOLEDO"

### Travel Slides—Europe

ANCIENT GREECE TODAY (No. 56, 47 slides), reg. \$6.98, on sale at \$5.17  
BELGIUM THE BEAUTIFUL (No. 45, 36 slides), reg. \$5.49, on sale at \$3.96  
ENGLAND—TOWN AND COUNTRY (No. 7, 49 slides), reg. \$5.98, on sale at \$5.39  
FAIR FRANCE (No. 9, 58 slides), reg. \$7.98, on sale at \$6.38  
FINNISH PASTORALE (No. 183, 26 slides), reg. \$3.98, on sale at \$2.86  
HOLLAND—HIGH SPOTS IN THE LOWLANDS (No. 44, 42 slides), reg. \$5.98, on sale at \$4.62  
ITALY—NAPLES, POMPEII, SORRENTO AND CAPRI (No. 41, 19 slides), reg. \$2.98, on sale at \$2.09  
ITALY—ROME, ST. PETER'S AND THE VATICAN (No. 38, 29 slides), reg. \$3.98, on sale at \$3.19  
ITALY—VENICE, FLORENCE, PISA AND MILAN (No. 39, 42 slides), reg. \$5.98, on sale at \$4.62  
MADRID AND TOLEDO (No. 102, 20 slides), reg. \$2.98, on sale at \$2.20  
NORWAY—MIDSUMMER SKETCHES (No. 181, 40 slides), reg. \$5.98, on sale at \$4.40



"NORWAY—MIDSUMMER SKETCHES"

NORWAY, LAND OF THE MIDNIGHT SUN (No. 35, 48 slides), reg. \$6.98, on sale at \$5.28  
PICTURESQUE AND PROGRESSIVE DENMARK (No. 36, 48 slides), reg. \$6.98, on sale at \$5.28  
PARIS ON THE SEINE (No. 8, 47 slides), reg. \$6.98, on sale at \$5.17  
SIGHTSEEING IN LONDON (No. 6, 50 slides), reg. \$6.98, on sale at \$5.50  
SKY-HIGH SWITZERLAND (No. 13, 43 slides), reg. \$5.98, on sale at \$4.73  
SPAIN—ITS SUNNY SLOPES AND SHORE (No. 103, 26 slides), reg. \$3.98, on sale at \$2.86  
SUMMER IN LAPLAND (No. 182, 16 slides), reg. \$2.49, on sale at \$1.76  
VIKING LAND, SWEDEN (No. 37, 40 slides), reg. \$5.98, on sale at \$4.40

### Travel Slides—The Pacific

BALI TODAY (No. 16, 25 slides), reg. \$3.98, on sale at \$2.75  
HAWAII—OUR VACATION PARADISE (No. 1, 50 slides), reg. \$6.98, on sale at \$5.50

### Travel Slides—The Orient

INDIA—THE LAND AND ITS PEOPLE (No. 75, 36 slides), reg. \$5.49, on sale at \$3.96  
JAPAN, THE OLD AND THE NEW (No. 55, 38 slides), reg. \$5.98, on sale at \$4.18  
KOREA—SEOUL-CHUNCHON AREA (No. 57, 26 slides), reg. \$3.98, on sale at \$2.86  
KOREA—PUSAN AREA (No. 54, 38 slides), reg. \$5.98, on sale at \$4.18  
KOREA—ALONG THE 38th (No. 50, 23 slides), reg. \$3.49, on sale at \$2.53



"HAWAII—OUR VACATION PARADISE"

### Travel Slides—The Middle East

EGYPT—THE PEOPLE, THE NILE AND THE SUEZ (No. 46, 24 slides), reg. \$3.49, on sale at \$2.64  
EGYPT—ITS ANCIENT WONDERS (No. 47, 31 slides), reg. \$4.49, on sale at \$3.41  
ISRAEL, LAND OF THE BIBLE (No. 2, 50 slides), reg. \$6.98, on sale at \$5.50



"EASTERN BIRDS OF FIELD AND WOOD"

### Wild Life Slides

AFRICAN BIG GAME (No. 144, 8 slides), reg. \$1.49, on sale at 96¢  
BIG GAME COUNTRY (No. 143, 8 slides), reg. \$1.49, on sale at 96¢  
THE CORN SNAKE AND THE MOUSE (No. 168, 8 slides), reg. \$1.49, on sale at 96¢  
EASTERN BIRDS OF FIELD AND WOOD (No. 155, 8 slides), reg. \$1.95, on sale at \$1.60  
NEST LIFE OF THE GREAT HORNED OWL (No. 154, 8 slides), reg. \$1.95, on sale at \$1.60  
POISONOUS SNAKES OF THE UNITED STATES (No. 161, 8 slides), reg. \$1.49, on sale at 96¢  
SNAKES OF THE NORTHEAST (No. 130, 8 slides), reg. \$1.49, on sale at 96¢  
TYPICAL SNAKES OF THE SOUTH (No. 159, 8 slides), reg. \$1.49, on sale at 96¢  
WILD ANIMALS OF THE AFRICAN PLAINS (No. 145, 8 slides), reg. \$1.49, on sale at 96¢



"NECK AND NECK TO THE WIRE"

### Historical Slides

BATTLES OF THE CIVIL WAR (No. 34, 28 slides), reg. \$3.98, on sale at \$3.08  
BRADY PHOTOGRAPHS OF THE CIVIL WAR (No. 30, 24 slides), reg. \$3.49, on sale at \$2.64  
CAPTURED GERMAN ARMY PICTURES (No. 12, 22 slides), reg. \$3.49, on sale at \$2.48  
CHARLESTON AND FORT SUMTER (No. 156, 20 slides), reg. \$2.98, on sale at \$2.20  
GETTYSBURG AND MR. LINCOLN (No. 166, 13 slides), reg. \$1.98, on sale at \$1.43  
NECK AND NECK TO THE WIRE (No. 157, 20 slides), reg. \$2.98, on sale at \$2.20  
THE 1939 SAN FRANCISCO WORLD'S FAIR AT NIGHT (No. 153, 13 slides), reg. \$1.98, on sale at \$1.43  
SO PROUDLY WE HAIL (No. 71, 13 slides), reg. \$1.98, on sale at \$1.43  
THE SPANISH-AMERICAN WAR ON LAND AND SEA (No. 146, 16 slides), reg. \$2.49, on sale at \$1.76  
UNION GENERALS OF THE CIVIL WAR (No. 69, 8 slides), reg. \$1.49, on sale at 96¢  
U. S. ARMY UNIFORMS FROM THE REVOLUTION TO THE SPANISH-AMERICAN WAR (No. 123, 23 slides), reg. \$3.49, on sale at \$2.53

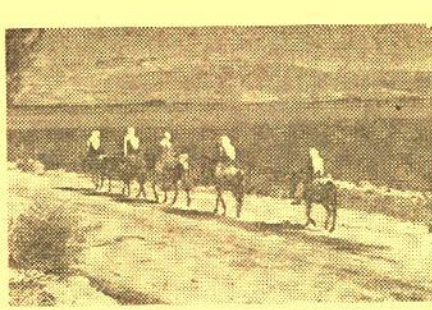




"FAMOUS TRAINS OF WESTERN RAILROADS, 1897-1903"



"BARNEY OLDFIELD'S RACE FOR A LIFE"



"OLD JERUSALEM AND NEW ISRAEL"



"THEM THAR HILLS"

## BLACKHAWK'S 8mm. movies IN B&W

### SAVE 50c, \$1.00, \$1.50, \$2.00 PER PRINT

### DURING BLACKHAWK'S AUGUST-SEPTEMBER CLEARANCE SALE!

#### COLLECTORS' ITEMS

THE AMERICANO (825-feet), with Douglas Fairbanks, Alma Rubens, Reg. \$19.98, pp. 27c \$17.98  
ADMIRAL DEWEY, HERO OF MANILA BAY (200-feet), Reg. \$5.98, pp. 12c \$5.48  
BATHING GIRLS—THEN AND NOW (150-feet), Reg. \$4.49, pp. 12c \$3.99  
THE BUSHER (700-feet), with Charles Ray, Colleen Moore, ohn Gilbert, Reg. \$19.98, pp. 27c \$17.98  
CORONATION DAYS, 1902 and 1911, AND OTHER PICTURES (150-feet), Reg. \$4.49, pp. 12c \$3.99  
DAYS OF MCKINLEY, BRYAN AND TEDDY ROOSEVELT (150-feet), Reg. \$4.49, pp. 12c \$3.99  
THE DOLL HOUSE MYSTERY (300-feet), Reliance Production, circa 1915, Trains and motor cars, Reg. \$8.98, pp. 18c \$7.98  
AN EDISON ALBUM (175-feet), Reg. \$4.98, pp. 12c \$4.48  
THE FIRST 500-MILE INDIANAPOLIS SPEEDWAY RACE, 1911 (150-feet), Reg. \$4.49, pp. 12c \$3.99  
THE FIRST GLIDDEN TOUR, 1905, Reg. \$5.98, pp. 12c \$5.48  
THE FOILED ELOPEMENT (200-feet), with James Cruze, Marguerite Snow, A chapter from "Zadora", Reg. \$5.98, pp. 12c \$5.48  
FOLLIES, FOIBLES AND FASHIONS, 1903-1905 (200-feet), Cheesecake of the day, Reg. \$5.98, pp. 12c \$5.48  
FLIVVERING (150-feet), with Victor Moore, Reg. \$4.49, pp. 12c \$3.99  
ON A GOOD OLD FIVE CENT TROLLEY RIDE (150-feet), Reg. \$4.49, pp. 12c \$3.99  
THE RETURN OF DRAW EGAN (700-feet), with Wm. S. Hart, Margery Wilson, Robert McKim, Reg. \$19.98, pp. 27c \$17.98  
THE RUINS OF SAN FRANCISCO, 1906 (100-feet), Reg. \$3.99, pp. 12c \$3.49  
THE SAGA OF WILLIAM S. HART (700-feet), Reg. \$19.98, pp. 27c \$17.98  
TOMMY BURNS VS. BILL SQUIRES, 1907 (125-feet), Reg. \$4.49, pp. 12c \$3.99  
THE UNWELCOME GUEST (275-feet), with Mary Pickford, Reg. \$8.98, pp. 18c \$7.98

#### LAUREL & HARDY COMEDIES

(Sorry, but we can ship prints of Laurel and Hardy Comedies only to destinations in Continental United States, Alaska and Hawaii)

ANGORA LOVE (325-feet), Reg. \$8.98, pp. 18c \$7.98  
BIG BUSINESS (300-feet), Reg. \$8.98, pp. 18c \$7.98  
DOUBLE WHOOPEE (300-feet), with Jean Harlow, Reg. \$8.98, pp. 18c \$7.98  
GOOFS OF THE GOLDEN WEST (500-feet), Reg. \$12.98, pp. 23c \$11.48  
THE LIVE GHOST (500-feet), Reg. \$12.98, pp. 23c \$11.48  
THE MUSIC BOX (550-feet), Reg. \$15.98, pp. 27c \$13.98  
NIGHT OWLS (325-feet), Reg. \$8.98, pp. 18c \$7.98  
SCRAM (300-feet), Reg. \$8.98, pp. 18c \$7.98  
THEM THAR HILLS (450-feet), Reg. \$12.98, pp. 23c \$11.48  
TOWED IN A HOLE (500-feet), Reg. \$12.98, pp. 23c \$11.48  
TIT FOR TAT (400-feet), Reg. \$9.98, pp. 18c \$8.98  
TWO TARS (500-feet), Reg. \$12.98, pp. 23c \$11.48  
TWO ON A TEAR (550-feet), Reg. \$15.98, pp. 27c \$13.98  
WE FAW DOWN (325-feet), Reg. \$8.98, pp. 18c \$7.98  
WRONG AGAIN (300-feet), Reg. \$8.98, pp. 18c \$7.98

#### MACK SENNETT-KEYSTONE COMEDIES

BARNEY OLDFIELD'S RACE FOR A LIFE (150-feet), with Mabel Normand, Ford Sterling, Mack Sennett and Barney Oldfield, Reg. \$4.49, pp. 12c \$3.99  
BECAUSE HE LOVED HER (300-feet), with Sam Bernard, Mae Busch, Ford Sterling and The Keystone Kops, Reg. \$8.98, pp. 18c \$7.98  
A CLEVER DUMMY (300-feet), with Ben Turpin, Reg. \$8.98, pp. 12c \$7.98  
HER DRAMATIC DEBUT (150-feet), with Mabel Normand, Fatty Arbuckle, Mack Sennett, Reg. \$4.49, pp. 12c \$3.99  
HIS BITTER PILL (300-feet), with Mack Swain, Edgar Kennedy, Reg. \$8.98, pp. 18c \$7.98  
LEADING LIZZIE ASTRAY (150-feet), with Fatty Arbuckle, Reg. \$4.49, pp. 12c \$3.99  
TEDDY AT THE THROTTLE (300-feet), with Gloria Swanson, Wallace Beery, Bobby Vernon, Reg. \$9.98, pp. 18c \$8.98  
WIFE AND AUTO TROUBLE (200-feet), with Willie Collier, Mae Busch and The Keystone Kops, Reg. \$4.98, pp. 12c \$4.49

#### MACK SENNETT COMEDIES

ALL NIGHT LONG (300-feet), with Harry Langdon, Reg. \$8.98, pp. 18c \$7.98  
BOOBS IN THE WOOD (300-feet), with Harry Langdon, Reg. \$8.98, pp. 18c \$7.98  
CIRCUS TODAY (300-feet), with Billy Bevan, Madeline Hurlock, Reg. \$8.98, pp. 18c \$7.98  
A HAREM KNIGHT (300-feet), with Ben Turpin, Reg. \$8.98, pp. 18c \$7.98  
SUPER-HOOPER-DYNE LIZZIES (300-feet), with Billy Bevan, Reg. \$8.98, pp. 18c \$7.98  
YUKON JAKE (300-feet), with Ben Turpin, Reg. \$8.98, pp. 18c \$7.98

#### HAL ROACH COMEDIES

THE CAKE EATER (300-feet), with Will Rogers, Reg. \$8.98, pp. 18c \$7.98  
CRAZY LIKE A FOX (300-feet), with Charley Chase, Reg. \$8.98, pp. 18c \$7.98

#### CHARLIE CHAPLIN COMEDIES

THE CURE (350-feet), with Edna Purviance, Reg. \$9.98, pp. 18c \$8.98  
THE FLOORWALKER (350-feet), with Edna Purviance, Reg. \$9.98, pp. 18c \$8.98  
GETTING ACQUAINTED (150-feet), Reg. \$4.49, pp. 12c \$3.99  
HIS NEW PROFESSION (150-feet), Reg. \$4.49, pp. 12c \$3.99  
THE NEW JANITOR (150-feet), Reg. \$4.49, pp. 12c \$3.99  
MAKING A LIVING (150-feet), Reg. \$4.49, pp. 12c \$3.99  
POLICE (350-feet), with Edna Purviance, Reg. \$9.98, pp. 18c \$8.98  
THE PAWN SHOP (350-feet), Reg. \$9.98, pp. 18c \$8.98  
THE ROUNDERS (150-feet), with Fatty Arbuckle, Reg. \$4.49, pp. 12c \$3.99  
TANGO TANGLES (150-feet), with Fatty Arbuckle, Ford Sterling, Reg. \$4.49, pp. 12c \$3.99  
THE VAGABOND (350-feet), with Edna Purviance, Reg. \$9.98, pp. 18c \$8.98

#### PEARL WHITE SERIAL CHAPTERS FROM "THE PERILS OF PAULINE" AND "THE EXPLOITS OF ELAINE"

DEADLY TURNING FROM THE PERILS (200-feet), Reg. \$5.98, pp. 12c \$5.48  
THE DEATH RAY FROM ELAINE (400-feet), Reg. \$11.98, pp. 18c \$10.98  
THE PIRATES' TREASURE FROM THE PERILS (250-feet), Reg. \$7.98, pp. 18c \$6.98

#### FAIRY TALES

(Live action—not cartoons or puppets)

BEAUTY AND THE BEAST (150-feet), Reg. \$4.49, pp. 12c \$3.99  
CINDERELLA (150-feet), Reg. \$4.49, pp. 12c \$3.99  
JACK AND THE BEAN STALK (150-feet), Reg. \$4.49, pp. 12c \$3.99  
LITTLE RED RIDING HOOD (150-feet), Reg. \$4.49, pp. 12c \$3.99  
THE MAGIC LAMP (150-feet), Reg. \$4.49, pp. 12c \$3.99  
RAPUNZEL (150-feet), Reg. \$4.49, pp. 12c \$3.99  
RUMPLESTILTSKIN (150-feet), Reg. \$4.49, pp. 12c \$3.99  
SNOW WHITE AND ROSE RED (150-feet), Reg. \$4.49, pp. 12c \$3.99

#### CHILDREN'S FILMS

THE CIRCUS WAKES UP (150-feet), Reg. \$4.49, pp. 12c \$3.99  
HEROES OF THE ALAMO (150-feet), Reg. \$4.49, pp. 12c \$3.99  
THE LITTLEST ANGEL (300-feet), Reg. \$8.98, pp. 18c \$7.98

#### RAILROAD FILMS

AT SHERMAN HILL ON THE UNION PACIFIC (150-feet), Reg. \$4.49, pp. 12c \$3.99  
THE BLOCK SIGNAL (800-feet), with Ralph Lewis, Jean Arthur, Hugh Allen, Reg. \$19.98, pp. 27c \$17.98  
THE CALIFORNIA ZEPHYR (150-feet), Reg. \$4.49, pp. 12c \$3.99  
CLEAR IRON—THE STORY OF THE RDC (150-feet), Reg. \$4.49, pp. 12c \$3.99  
FAMOUS TRAINS OF WESTERN RAILROADS, 1897-1903 (150-feet), Reg. \$5.98, pp. 12c \$5.48  
THE GEORGETOWN LOOP, 1903 (110-feet), Reg. \$4.49, pp. 12c \$3.99  
THE GREAT TRAIN ROBBERY, 1903 (150-feet), Reg. \$4.49, pp. 12c \$3.99  
HIGH SPEED FREIGHT ON THE NICKEL PLATE (150-feet), Reg. \$4.49, pp. 12c \$3.99  
THE HOLD-UP OF THE ROCKY MOUNTAIN EXPRESS, 1906 (150-feet), Reg. \$4.98, pp. 12c \$4.48

THE LONEDALE OPERATOR, 1911 (200-feet), Reg. \$4.98, pp. 12c \$4.48  
NIGHT MAIL (300-feet), Reg. \$8.98, pp. 18c \$7.98  
THE OLYMPIAN HIAWATHIA (150-feet), Reg. \$4.49, pp. 12c \$3.99  
THE NARROW GAUGE CATSKILL MOUNTAIN RAILWAY (150-feet), Reg. \$4.98, pp. 12c \$4.48  
ON THE BALTIMORE & OHIO (150-feet), Reg. \$4.49, pp. 12c \$3.99  
ON THE CANADIAN NATIONAL (150-feet), Reg. \$4.49, pp. 12c \$3.99  
ON THE DELAWARE & HUDSON (150-feet), Reg. \$4.49, pp. 12c \$3.99  
ON THE EAST BROAD TOP (150-feet), Reg. \$4.49, pp. 12c \$3.99  
ON THE NORFOLK & WESTERN (150-feet), Reg. \$4.49, pp. 12c \$3.99  
ON THE PENNSYLVANIA (150-feet), Reg. \$4.49, pp. 12c \$3.99  
THE OPEN TRACK (300-feet), with Helen Holmes, Reg. \$8.98, pp. 18c \$7.98  
THE PAY TRAIN (150-feet), with Helen Holmes, Reg. \$4.49, pp. 12c \$3.99  
THE PRESIDENT'S SPECIAL, 1914 (300-feet), Reg. \$8.98, pp. 18c \$7.98  
THE SUPER CHIEF (150-feet), Reg. \$4.49, pp. 12c \$3.99  
TIME FREIGHT TO TIDEWATER (300-feet), Reg. \$8.98, pp. 18c \$7.98  
WESTERN PACIFIC FAST FREIGHT (150-feet), Reg. \$4.49, pp. 12c \$3.99  
WHEELS A-ROLLING (300-feet), Reg. \$8.98, pp. 18c \$7.98

The following group of railroad films do not have text titles, but are accompanied by printed sheets of text or narration:

AT THE HUB OF THE BURLINGTON (100-feet), Reg. \$3.99, pp. 12c \$3.49  
THE CHIEFS OF THE SANTA FE (100-feet), Reg. \$3.99, pp. 12c \$3.49  
DONNER PASS (100-feet), Reg. \$3.99, pp. 12c \$3.49  
SOUTHERN PACIFIC—FROM SAN FRANCISCO TO ROSEVILLE (100-feet), Reg. \$3.99, pp. 12c \$3.49  
SOUTHERN PACIFIC STEAM LOCOMOTIVES (100-feet), Reg. \$3.99, pp. 12c \$3.49

#### SHIPS AND BOATS

THE QUEEN ELIZABETH (150-feet), Reg. \$4.49, pp. 12c \$3.99  
SUPERLINER UNITED STATES (300-feet), Reg. \$8.98, pp. 18c \$7.98  
TOWBOAT ON THE RIVER (150-feet), Reg. \$4.49, pp. 12c \$3.99

#### AVIATION FILMS

AIRPOWER IN TRANSITION (150-feet), Reg. \$4.49, pp. 12c \$3.99  
FROM THE FIRST AIR MAIL TO THE DC-7 (300-feet), Reg. \$8.98, pp. 18c \$7.98  
UNITED FLIGHT 608 (300-feet), Reg. \$8.98, pp. 18c \$7.98

#### BIBLE STORIES

ABRAHAM'S SACRIFICE (300-feet), Reg. \$8.98, pp. 18c \$7.98  
THE BIRTH OF MOSES (300-feet), Reg. \$8.98, pp. 18c \$7.98  
THE GOOD SAMARITAN (175-feet), Reg. \$4.98, pp. 12c \$4.48  
MY BELOVED SON (300-feet), Reg. \$8.98, pp. 18c \$7.98  
THE NATIVITY OF OUR LORD (175-feet), Reg. \$4.98, pp. 12c \$4.48  
THE PARABLE OF THE LOST SHEEP (300-feet), Reg. \$8.98, pp. 18c \$7.98  
THE SAVIOUR'S BORN (300-feet), Reg. \$8.98, pp. 18c \$7.98

#### THE HOLY LAND

GALILEE, LAND OF JESUS AND HIS DISCIPLES (150-feet), Reg. \$4.49, pp. 12c \$3.99  
NAZARETH, THE TOWN WHERE JESUS LIVED (150-feet), Reg. \$4.49, pp. 12c \$3.99  
OLD JERUSALEM AND NEW ISRAEL (150-feet), Reg. \$4.49, pp. 12c \$3.99

#### WORLD WAR II AND THE KOREAN WAR

AIR SIEGE AT PLOESTI (150-feet), Reg. \$4.49, pp. 12c \$3.99  
BATTLE FOR BRITAIN (450-feet), Reg. \$12.98, pp. 23c \$11.48  
BURMA VICTORY (300-feet), Reg. \$8.98, pp. 18c \$7.98  
FLYING BOAT VS. GERMAN SEA RAIDER (300-feet), Reg. \$8.98, pp. 18c \$7.98  
FROM NEW GUINEA TO JAPAN WITH THE SUNSET DIVISION (150-feet), Reg. \$4.49, pp. 12c \$3.99

FROM AUSTRALIA TO THE PHILIPPINES WITH THE RED ARROW DIVISION (150-feet), Reg. \$4.49, pp. 12c \$3.99  
TARGET FOR TONIGHT (300-feet), Reg. \$8.98, pp. 18c \$7.98  
KOREA'S FIRST FORTH DAYS (150-feet), Reg. \$4.49, pp. 12c \$3.99

#### "THE TRUE GLORY"

General Eisenhower Called It, "Crusade in Europe"  
PRELUDE TO INVASION (300-feet), Reg. \$8.98, pp. 18c \$7.98  
D-DAY (300-feet), Reg. \$8.98, pp. 18c \$7.98  
THE BATTLE OF THE BEACHHEAD (300-feet), Reg. \$8.98, pp. 18c \$7.98  
THE LIBERATION OF PARIS (300-feet), Reg. \$8.98, pp. 18c \$7.98  
THE PUSH TO THE GERMAN FRONTIER (300-feet), Reg. \$8.98, pp. 18c \$7.98  
THE BATTLE OF THE BULGE (300-feet), Reg. \$8.98, pp. 18c \$7.98  
FINAL VICTORY (300-feet), Reg. \$8.98, pp. 18c \$7.98  
All seven chapters of "The True Glory", purchased together at one time, pp. 35c \$57.98

#### "VICTORY IN NORTH AFRICA"

THE BATTLE OF EL ALAMEIN (450-feet), Reg. \$12.98, pp. 23c \$11.48  
PREPARATIONS FOR INVASION (300-feet), Reg. \$8.98, pp. 18c \$7.98  
LANDING IN NORTH AFRICA (300-feet), Reg. \$8.98, pp. 18c \$7.98  
THE WINTER MONTHS (300-feet), Reg. \$8.98, pp. 18c \$7.98  
THE VICTORIOUS SPRING CAMPAIGN (300-feet), Reg. \$8.98, pp. 18c \$7.98  
All five chapters of "Victory in North Africa", purchased together at one time, pp. 31c \$44.98

#### WILD LIFE AND ADVENTURE FILMS

BIG GAME ANIMALS OF KRUGER NATIONAL PARK (300-feet), Reg. \$8.98, pp. 18c \$7.98  
BIRTH OF A FLORIDA KEY (150-feet), Reg. \$4.49, pp. 12c \$3.99  
BLUE GEESE (150-feet), Reg. \$4.49, pp. 12c \$3.99  
BLUE WARRIORS OF THE PACIFIC (150-feet), Reg. \$4.49, pp. 12c \$3.99  
BUFFALO LORE (150-feet), Reg. \$4.49, pp. 12c \$3.99  
CHANNEL BASS AND STRIPERS (150-feet), Reg. \$4.49, pp. 12c \$3.99  
DIANA IN AFRICA (150-feet), Reg. \$4.49, pp. 12c \$3.99  
ELEPHANT HUNT (150-feet), Reg. \$4.49, pp. 12c \$3.99  
FUR AND FEATHERS IN ALASKA (150-feet), Reg. \$4.49, pp. 12c \$3.99  
THE GREAT GAME OF FISHING (150-feet), Reg. \$4.49, pp. 12c \$3.99  
KENAI BIG GAME (150-feet), Reg. \$4.49, pp. 12c \$3.99  
LIZARDS AND THE GILA MONSTER (100-feet), Reg. \$3.99, pp. 12c \$3.49  
MAN-TAMERS OF MEXICO (150-feet), Reg. \$4.49, pp. 12c \$3.99  
PHEASANT FEVER (150-feet), Reg. \$4.49, pp. 12c \$3.99  
SALT WATER WONDERLAND (150-feet), Reg. \$4.49, pp. 12c \$3.99  
THE SCORPION AND THE TRAP-DOOR SPIDER (100-feet), Reg. \$3.99, pp. 12c \$3.49  
SHARK ON THE LINE (150-feet), Reg. \$4.49, pp. 12c \$3.99  
SNAKES OF THE COLORADO DESERT (150-feet), Reg. \$4.49, pp. 12c \$3.99  
STALKING THE ROYALE MOOSE (150-feet), Reg. \$4.49, pp. 12c \$3.99  
THRILL RIVER (150-feet), Reg. \$4.49, pp. 12c \$3.99  
UNDERWATER ADVENTURE (150-feet), Reg. \$4.49, pp. 12c \$3.99  
UNDERWATER SPEARFISHING IN THE CARIBBEAN (150-feet), Reg. \$4.49, pp. 12c \$3.99  
WILD FOWL IN SLOW MOTION (150-feet), Reg. \$4.49, pp. 12c \$3.99

#### SPORT AND ADVENTURE

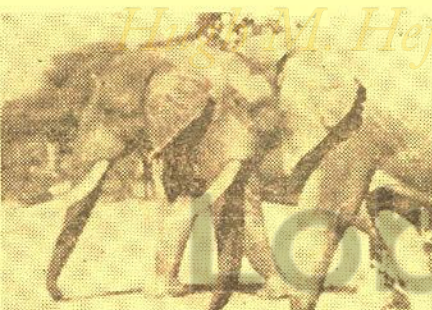
BIRTH OF A VOLCANO (150-feet), Reg. \$4.49, pp. 12c \$3.99  
DEATH IN THE ARENA (150-feet), Reg. \$4.49, pp. 12c \$3.99  
FROGMEN, THE UNDERWATER EXPLORERS (150-feet), Reg. \$4.49, pp. 12c \$3.99  
GIANTS AND DWARFS OF THE BELGIAN CONGO (150-feet), Reg. \$4.49, pp. 12c \$3.99  
LIPSTICK AND DYNAMITE (150-feet), Reg. \$4.49, pp. 12c \$3.99  
SKI SAFARI (150-feet), Reg. \$4.49, pp. 12c \$3.99  
SKIING DOWN THE SWISS ALPS (150-feet), Reg. \$4.49, pp. 12c \$3.99  
TAHITI, PARADISE ON EARTH (300-feet), Reg. \$8.98, pp. 18c \$7.98



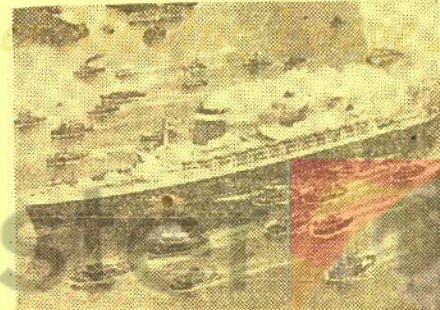
"THE FIRST GLIDDEN TOUR, 1905"



"BOOBS IN THE WOOD"

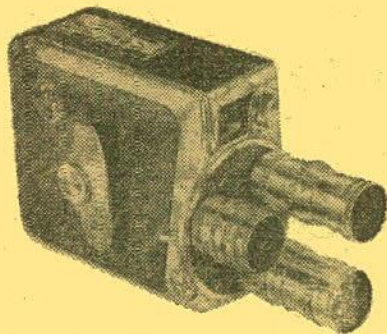


"BIG GAME ANIMALS OF KRUGER NATIONAL PARK"



"SUPERLINER UNITED STATES"



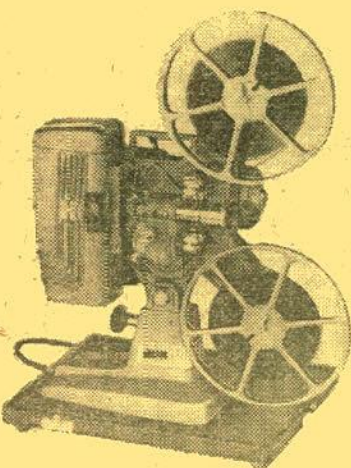


**Extra Special!**  
**ONLY A FEW AVAILABLE**  
**KEYSTONE K-48**

**8mm. ROLLFILM CAMERA**  
with 3 f:1.9 focusing lenses in turret!

Yes, we have just a few of these Keystone K-48 cameras fitted with three f:1.9 focusing lenses—standard, wide angle and telephoto! Shoots at four different speeds! Brand new, first quality. This camera, with this lens equipment, sold originally for more than \$200.00!

24-72 (pp. 43c), Blackhawk priced at only ..... **\$77.77**



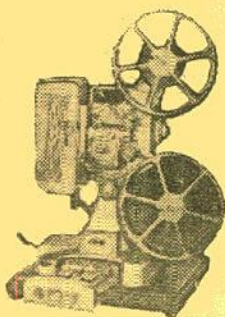
**KEYSTONE K-105 750-watt**  
**8mm. PROJECTOR**

The lowest-priced 8mm. projector with these most-demanded features—750-watt lamp for brighter pictures; reversing control; geared film wind—both forward and reverse!

Has coated f:1.6 1-inch lens, new style lamp house with condenser removable for cleaning, safety glass heat filter, all-gear film wind—no belts, advanced design film gate and side-away eliminators for rock steady pictures, large size motor and blower for cool operation! Has precision-focusing switch, Lite-o-matic switch (turns room light on when projector light goes off), 400-foot reel capacity, rheostat speed control, rapid rewind, self-locking tilt mechanism.

**KEYSTONE'S LIST, \$149.50**

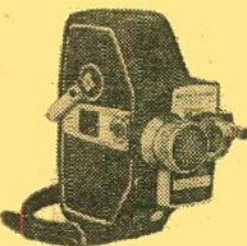
30-05, not available, you pay transportation on delivery—Blackhawk's price ..... **\$87.77**



**KEYSTONE**  
**K-109**  
**8mm.**  
**PROJECTOR**

The home movie projector with everything. A true precision instrument, with new precision focusing knob that assures razor-sharpness of focus, greatest picture clarity ever... quickly, easily. In addition, contains built-in splicer, Lite-o-Matic room light switch and editor-viewer, making it a complete, self-contained movie workshop. The Magna-Scope lens, coated and color-corrected, fills 40-inch screen at only 13-feet. Has geared reel arms, rheostat speed control, self-locking tilt mechanism, reversing switch, rapid automatic rewind, 750-watt projection lamp, takes 400-ft. reel, comes complete with carrying case. Not available.

Keystone Regal K-109D 8mm. Magna-Scope Projector, manufacturer's list price, \$174.50, our No. 30-07, Blackhawk's price ..... **\$114.44**

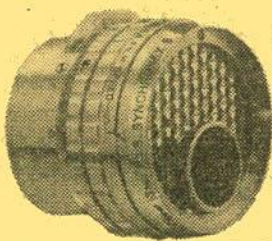


**BELL & HOWELL**  
**240EE**  
**16mm.**  
**ELECTRIC**  
**EYE**  
**CAMERA**

The world's easiest-to-use 16mm. cameras. Press a single button to capture every scene, every thrill—every time! The automatic Electric-Eye continuously sets the lens for you—even if the light changes as you shoot! Fast 20mm. f:1.9 lens in focusing mount gives 56% wider coverage than most standard lenses. Warning signal in viewfinder shows when there's not enough light for good pictures. Accepts economical 100-ft. single or double perforated roll film. Automatic threading takes only seconds. Five camera speeds from eight to forty-eight frames per second. Extra long 32-ft. film run per winding. Cable release socket. Automatic control panel—shows amount of motor power and film remaining. All die-cast aluminum—finished in Tyrolean gray leather and satin chrome. Manufacturer's list price, \$329.95.

21-24, pp. 35c, Blackhawk priced at only ..... **\$219.99**

**Here's the electric-eye lens that makes your present D-mount 8mm. camera an electric-eye camera...**



**ELGEET SYNCHRONEX 3**  
**f:1.8 13mm.**  
**ELECTRIC EYE LENS**

**TO FIT YOUR PRESENT D-MOUNT CAMERA**

The world's first and only fully automatic, interchangeable movie lens for all 8mm. cameras using D-Mount lenses—this excludes Bell & Howell cameras. No external power source is required. Four element lens is fixed focus, and calibrated for ASA 10 (Daylight color) and ASA 16 (Tungsten color) films. Has filter retaining ring. May be operated with manual settings for special uses over the full range of f:1.8 to f:16.

**MANUFACTURER'S LIST, \$59.95**

28-34, reg. \$47.95, pp. 12c, on sale at **\$39.95**

**ALL SALE PRICES LISTED HERE**

**EFFECTIVE ON ORDERS RECEIVED BY BLACKHAWK**

**THROUGH MONDAY, SEPT. 28, 1959**



**NEW**  
**REVERE**  
**EYE-MATIC**  
**CAMERAS**  
with  
**automatic exposure!**

Just aim and shoot—no focusing—no resetting of the lens. From sunlight to shade—the lens iris opens and closes continuously and automatically as the camera shifts from scene to scene. "Optic-Scale" always visible through view finder shows "F" exposure responding to the miracle of electric eye. Red signal indicates insufficient light for good movies.

**REVERE MODEL CA-5**  
**8mm. SPOOL CAMERA**

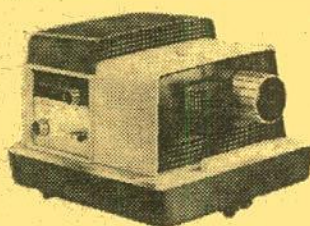
with F:1.8 Wollensak Normal plus conversion Wide Angle and Telephoto Lenses in 3-lens turret

21-43, manufacturer's list price, \$149.50; pp. 35c, Blackhawk priced at only ..... **\$108.88**

**REVERE MODEL CA-6**  
**8mm. MAGAZINE CAMERA**

with F:1.8 Wollensak Normal plus conversion Wide Angle and Telephoto Lenses in 3-lens turret

21-44, manufacturer's list price, \$179.50; pp. 35c, Blackhawk priced at only ..... **\$127.77**



**KODAK CAVALCADE**  
**MODEL 500 2"x2"**  
**AUTOMATIC SLIDE**  
**PROJECTOR**

Completely new versatility in automatic projection. Projector changes slides either at preset intervals, semi-automatically, or manually. Slides stay in focus. Unique editing feature allows showing single slides or allows editing slides without removing the magazine from the projector. Slides are stored and shown in new-type magazine which is inserted into the projector right side up. Brightness selector provides choice of 500-watt or 300-watt illumination. Movable pointer for pointing out details of each slide. Extra-fast slide change minimizes dark-screen time between slides. Micro-focus elevation and focus adjustments. Optical system, condenser elements and reflector readily removable for cleaning. Preview screen and cord storage provided inside cover. Color: textured gray and black with gold color trim. Comes complete with one tray (No. 1, for 40 cardboard mounted slides). 16-16, manufacturer's list price, \$116.66; pp. 37c, Blackhawk's price ..... **\$116.66**

**The slide projector with the HIGH PICTURE FIDELITY.**  
**BAUSCH & LOMB**  
**BALOMATIC**

Slides never pop out of focus... take all 2"x2" slides... no condenser change required... famous Bausch & Lomb lens quality... illuminated centralized control panels... finger-tip automatic or remote control!

**BALOMATIC 305**

with finger-tip automatic operation. Slides change by electrical impulse—most advanced finger-tip projector available. Front elevating device. Magnified slide index window. 40-slide tray and case. 500-watt lamp. 4", f:3.5 projection lens. Our No. 16-32, manufacturer's list price, \$99.50, Blackhawk's price ..... **\$67.77**

**BALOMATIC 300**

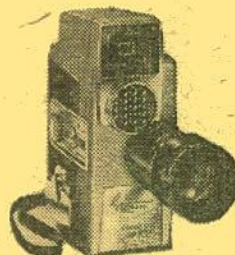
with finger-tip automatic operation. Has all other features of Model 305. Our No. 16-31, manufacturer's list price, \$84.50, Blackhawk's price ..... **\$59.99**  
Balomatic Trays, manufacturer's list, each, \$1.25, our No. 17-12, pp. 17c, Blackhawk priced at only, each ..... **99c**

**BALOMATIC 500**

with fully automatic operation. Time cycle control at any interval you wish, from 4 to 60 seconds for each slide. Also finger-tip automatic control at any time interval you choose. Remote control (optional). Illuminated focusing and elevating knobs. Magnified slide index window. 40-slide tray and case. 500-watt lamp. 5-inch, f:3.5 projection lens. Our No. 16-33, manufacturer's list price, \$149.50, Blackhawk's January-February price ..... **\$107.77**

Balomatic Remote Control Cord, 15-feet in length, for across the room operation with Models 500, 305 and 300, manufacturer's list price, \$4.95, our No. 16-34, pp. 23c, only ..... **\$3.99**

**BALOMATIC PROJECTORS ARE SHIPPED BY EXPRESS—YOU PAY TRANSPORTATION ON DELIVERY**



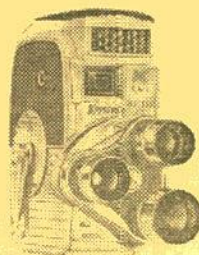
**Revere 8mm.**  
**ZOOM LENS**  
**ELECTRIC**  
**EYE-MATIC CAMERA**

Now the dramatic zoom effect you see on TV and in the Hollywood movies! For the first time, a zoom lens is standard equipment on a completely automatic electric eye 8mm. camera. You have normal, wide angle and telephoto lens with continuous sharpness throughout the entire zooming range. The smooth, continuous zooming close-ups of distant subjects are astonishing—surpassing anything ever seen in home movies! The electric eye with the "Optic-Scale" that automatically sets exposure, without calculations or guesswork, is a miracle all by itself! Together, they're unbeatable.

**TWO MODELS—ONE FOR ROLLFILM—**  
**ONE A MAGAZINE TYPE**

21-59, Revere CA-7 8mm. Cine Zoom Electric Eye-Matic Camera, uses roll film, has Wollensak f:1.8 Raptor Zoom Lens, nationally advertised at \$179.50, PP 47c, Blackhawk priced at only ..... **\$139.95**

21-60, Revere CA-8 8mm. Cine Zoom Electric Eye-Matic Camera, uses magazine film, has Wollensak f:1.8 Raptor Zoom Lens, nationally advertised at \$209.50, PP 47c, Blackhawk priced at only ..... **\$159.95**



**NEW!**  
**KEYSTONE**  
**KA-1-D 8mm.**  
**electric eye**  
**3-lens**  
**TURRET**  
**CAMERA**

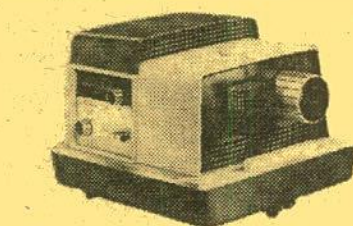
1959's hottest camera buy! Completely new! Automatic lens setting gives perfect exposure every time you press the trigger. Two built-in filters permit you to use outdoor film indoors, or indoor film outdoors. Automatic focus indicator. Three-way trigger—for self movies—single frame for trick shots—regular trigger action. Has f:1.8 normal lens and wide angle and telephoto conversion lenses in 3-lens turret. Manufacturer's nationally advertised price, \$129.95.

21-50, pp. 35c, Blackhawk priced at... **\$97.77**

**KEYSTONE KA-1-C**  
**AUTOMATIC ELECTRIC EYE**  
**3-LENS TURRET CAMERA**

Identical to KA-1-D illustrated and described above except that it is fitted with f:2.3 standard, wide angle and telephoto combination. Manufacturer's nationally advertised price, \$99.95.

21-61, pp. 35c, Blackhawk priced at... **\$79.95**



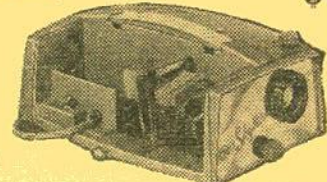
**MANSFIELD HI-FI "500"**  
**2"x2" SLIDE PROJECTOR**

An improved 35mm. 2"x2" slide projector! Variable light control adjusts from 300-watts to 500-watts for instantaneous light change for over or under-exposed slides. Easy rack and pinion focusing knob. 2 to 1 tilt ratio device. Double condensing lens system to insure sharp picture at edges. Coated 5-inch achromatic f:3.5 lens. High intensity blower for cooling. Independent lamp and blower switches. For all 2"x2" and super slides.

16-27, equipped with Airequipt Electro Changer—fully automatic—manufacturer's list price, \$89.95; pp. 67c, priced at only ..... **\$57.77**

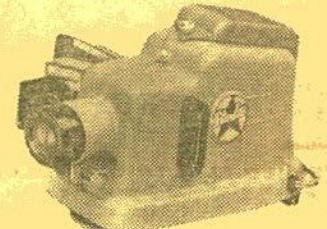
16-26, equipped with Prest-o-Matic Changer—semi-automatic—manufacturer's list price, \$59.95; pp. 67c, priced at only ..... **\$37.77**

16-28, Carrying Case for Mansfield Hi-Fi "500" Slide Projector, manufacturer's list price, \$9.95; pp. 39c, priced at only ..... **\$7.95**



**MANSFIELD "SKYLARK"**  
**300-WATT 2"x2" SLIDE**  
**PROJECTOR with**  
**PRESTO-MATIC CHANGER**

Newest in compact design for all 2"x2" and Super Slides. 300-watt lamp is turbo-blower cooled. 4-inch, f:3.5 color corrected and coated lens. Rapid spring raising and lowering device. Easy rack and pinion focusing knob. Aluminum die-cast construction. Storage compartment holds 100-slides. Presto-Matic changer holds 36 slides. Colorful self-contained case. Mansfield Skylark 300-watt 2"x2" Slide Projector with Presto-Matic Changer, manufacturer's list price, \$44.95; our item No. 16-30, pp. 63c, Blackhawk priced at ..... **\$28.88**

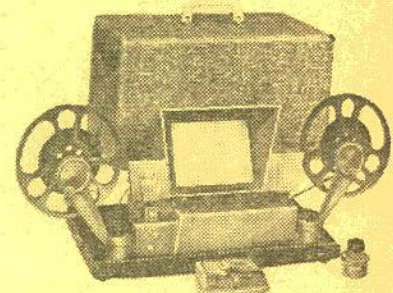


**MANSFIELD "STARLITE"**  
**AUTOMATIC 2"x2"**  
**SLIDE PROJECTOR**

For all 2"x2" and super slides. Has Presto-Matic changer that holds forty-six slides. Die-cast aluminum construction. 5-inch f:3.5 color corrected lens, double aspheric condenser lens system, all optics hard coated. Rack and pinion focusing. Uses 150-watt tru-focus bulb. Manufacturer's list price, \$24.95.

16-29, pp. 43c ..... **\$16.66**

16-39, Carrying Case for Mansfield "Starlite" 2"x2" Slide Projector (pp. 31c) ..... **\$4.79**



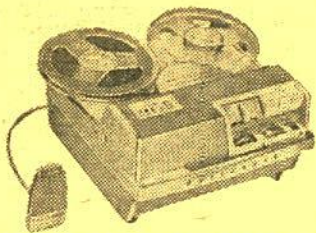
**Mansfield "HOLIDAY"**  
**8mm. and 16mm. EDITORS**

Action viewer provides large 4 1/2" x 6", brilliant picture! Built-in focusing, framing and film marker. Optical prism shutter. Precision ground and polished coated lens system. All front surface mirrors. Fold-away, geared (4-to-1 ratio) rewinds. Automatic film splicer with radial scraping blade. 400 ft. reel capacity. All aluminum die-cast construction. Sturdy wood carrying case covered with tweed-type cloth.

24-08, 8mm. editor, manufacturer's list price, \$64.50, pp. 91c, only ..... **\$37.77**

24-09, 16mm. editor, manufacturer's list price, \$69.50, pp. 87c, only ..... **\$42.22**





### WOLLENSAK HI-FIDELITY TAPE RECORDER MODEL T-1500

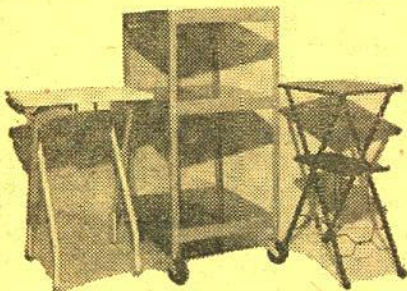
Size approximately 6 1/2 x 10 1/4 x 1 3/4 inches. Weight, 18 pounds. 7-inch reel capacity. 10-watts push-pull audio output. Keyboard control. Pre-amplifier output jack. Exclusive high speed lever. Two level recording indicator. Dual high-low output. Instant stop lever. Record key lock. Extension speaker jack. Precision index counter. Two-speed knob for 3 1/2-IPS. or 7 1/2-IPS. can be switched at any time during any playing or recording operation. High frequency erase. P. A. amplifier output. Real portability with console performance—40 to 15,000-cps. at 7 1/2-IPS.—40 to 7,500-cps at 3 1/2-IPS. Transportation extra. No C.O.D.'s on this item.

59-01, manufacturer's list price, \$189.50; Blackhawk's regular price, \$149.50; on sale at... **\$144.44**

### WOLLENSAK STEREOPHONIC TAPE RECORDER MODEL T-1515

Similar in appearance to monaural model illustrated above. This hi-fidelity stereophonic, dual speed tape recorder—stacked head—ceramic microphone—monaural record and playback, plus stereophonic playback. Amplifier and speaker of your TV or radio serve as second channel for playing stereo tapes. All basic features and accessories similar to monaural model described above. Not mailable—you pay transportation on delivery.

59-06, manufacturer's list price, \$229.50; Blackhawk's regular price, \$169.95; on sale at... **\$166.66**



## PROJECTOR TABLES

### PREMIER ELECTRICAL FOLD- AWAY PROJECTION STAND

(Illustrated at left, above.) Light weight—easily carried from room to room. Soft glow for pre-viewing and identifying slides does away with groping in the dark. Electrical outlets for projector and other accessories. Toggle switch controls projector table plus table lamps and floor lamps. Wood top 18"x20"x3/4". Positive locking to hold open—yet closes instantly. 1-inch, 18-gauge tubular legs are finished in baked enamel. You pay express or freight on receipt. No C.O.D.'s on this item.

47-01, Blackhawk's regular price, \$18.95; on sale at... **\$17.77**

### PREMIER FOLD-AWAY PROJECTION STAND

(Similar to model illustrated at left, above.) Identical to model described above, with electrical fittings except that this model is projection stand only, without any of the electrical connections or switches. You pay express or freight on receipt. No C.O.D.'s on this item.

47-02, Blackhawk's regular price, \$8.79; on sale at... **\$8.44**

### RUDCO PROJECTION TABLE

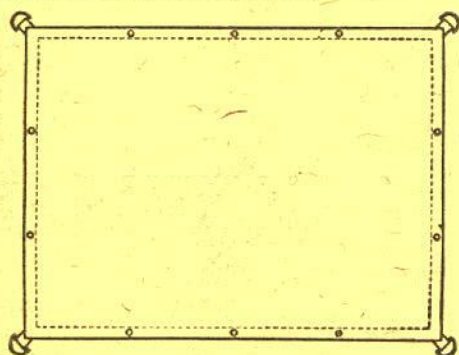
(Illustrated in middle, above.) A heavy gauge, all steel projection table with 4-inch semi-soft rubber casters. Has three 18" x 24" shelves, middle shelf with six height adjustments, 42-inch over-all height. Accommodates sound projector side-by-side with film-strip or slide projector, tape recorder, record player, etc. Lower shelf designed for speaker. Shipped knocked down for economy. Easily assembled in a few minutes with nuts and bolts supplied. You pay express or freight on receipt. No C.O.D.'s on this item.

47-03, Blackhawk's regular price, \$27.95; on sale at... **\$19.19**

### BOND MP29 PROJECTOR TABLE

(Illustrated at right, above.) One of the most satisfactory, yet most economically priced projector tables we've yet come across. Top size is 12"x18"—shelf size 8"x16". Height is 29-inches. Comes in black finish with non-mar tips on legs. Folds flat for easy storage. You pay express or freight on delivery. No C.O.D.'s on this item.

47-07, Blackhawk's regular price, \$7.49; on sale at... **\$6.99**



### 9'x12' CLOTH SCREEN

Here is an economical screen that will give excellent service, both outdoors and indoors. Made of heavy white cloth, linen stitched, it is reinforced and fitted with grommets around all four sides, with metal "D's" at the corners. It is thus adaptable for stretching in a frame or hanging on a wall. Folds compactly, too. Washable, and use of a good bleach will keep it light. Size is approximately 9'x12'.

45-01, Blackhawk's regular price, \$18.98; on sale at... **\$17.77**



## REELS and CANS

For Film and Tape

Reels are stamped from a superior grade of steel with sufficient spring to resist bending, yet are light in weight. Cans are embossed to achieve maximum rigidity. Reels and cans are of matching dark brown baked enamel finish, except that "economy" reels are finished in grey enamel. These "economy" reels are stamped from slightly lighter weight steel, and are embossed to give added resistance to bending.

### REELS

- 51-01 200-ft. capacity 8mm. reels, list 65c each (Also serve as 5-inch diameter magnetic tape reels) 1 (pp. 8c), 55c 3 (pp. 23c), \$1.55 6 (pp. 27c), \$2.77
- 51-09 200-ft. capacity 8mm. "economy" reels (Also serve as 5-inch diameter magnetic tape reels) 3 (pp. 23c), \$1.33 6 (pp. 27c), \$2.44
- 51-02 400-ft. capacity 8mm. reels, list 80c each (Also serve as 7-inch diameter magnetic tape reels) 1 (pp. 14c), 66c 3 (pp. 27c), \$1.77 6 (pp. 35c), \$3.11
- 51-10 400-ft. capacity 8mm. "economy" reels (Also serve as 7-inch diameter magnetic tape reels) 3 (pp. 27c), \$1.33 6 (pp. 35c), \$2.44
- 51-03 400-ft. capacity 16mm. reels, list 80c each 1 (pp. 14c), 66c 3 (pp. 27c), \$1.77 6 (pp. 35c), \$3.11
- 51-11 400-ft. capacity 16mm. "economy" reels 3 (pp. 27c), \$1.33 6 (pp. 35c), \$2.44
- 51-04 600-ft. capacity 16mm. reels, list \$2.25 ea. 1 (pp. 27c), \$1.55 3 (pp. 35c), \$4.44 6 (pp. 47c), \$8.22
- 51-05 800-ft. capacity 16mm. reels, list \$2.45 ea. 1 (pp. 27c), \$1.77 3 (pp. 35c), \$4.99 6 (pp. 55c), \$9.19
- 51-06 1200-ft. capacity 16mm. reels, list \$2.95 ea. 1 (pp. 31c), \$2.11 3 (pp. 43c), \$5.99 6 (pp. 59c), \$11.11
- 51-07 1600-ft. capacity 16mm. reels, list \$3.30 ea. 1 (pp. 31c), \$2.22 3 (pp. 43c), \$6.16 6 (pp. 63c), \$11.19
- 51-08 2000-ft. capacity 16mm. reels, list \$4.95 ea. 1 (pp. 31c), \$3.99 3 (pp. 63c), \$11.11 6 (pp. 75c), \$19.99

### CANS

- 50-01 200-ft. capacity 8mm. cans, list 65c each (Also hold 5-inch magnetic tape reels) 1 (pp. 8c), 55c 3 (pp. 23c), \$1.55 6 (pp. 27c), \$2.77
- 50-02 400-ft. capacity 8mm. cans, list 80c each (Also hold 7-inch magnetic tape reels) 1 (pp. 14c), 66c 3 (pp. 27c), \$1.77 6 (pp. 35c), \$3.11
- 50-03 400-ft. capacity 16mm. cans, list 80c each 1 (pp. 14c), 66c 3 (pp. 27c), \$1.77 6 (pp. 35c), \$3.11
- 50-04 600-ft. capacity 16mm. cans, list \$2.25 ea. 1 (pp. 27c), \$1.55 3 (pp. 35c), \$4.44 6 (pp. 47c), \$8.22
- 50-05 800-ft. capacity 16mm. cans, list \$2.45 ea. 1 (pp. 27c), \$1.77 3 (pp. 39c), \$4.99 6 (pp. 55c), \$9.19
- 50-06 1200-ft. capacity 16mm. cans, list \$2.95 ea. 1 (pp. 31c), \$2.11 3 (pp. 51c), \$5.99 6 (pp. 79c), \$11.11
- 50-07 1600-ft. capacity 16mm. cans, list \$3.30 ea. 1 (pp. 35c), \$2.22 3 (pp. 55c), \$6.16 6 (pp. 87c), \$11.99
- 50-08 2000-ft. capacity 16mm. cans, list \$4.95 ea. 1 (pp. 35c), \$3.99 3 (pp. 63c), \$11.11 6 (pp. 75c), \$19.99



### PROJECT-O-STAND

In use today in thousands of schools, colleges, institutions, churches, government and industrial departments. Meets government specifications. Hi-Test aluminum top casting (11"x19") has beaded edge and extra deep girder-type ribs for real rugged strength. Legs fitted with larger solid steel tips are threaded to screw directly into the casting. Result—100% rigidity; no play; New Easy-Grip disc-type lock-knob, locks and releases instantly. Legs are precision machined from 1 1/4" high tensile aluminum tubing. Top casting and legs are beautifully finished in tan hammertone. Projector vibration absorbed by large rubber leg tips that also prevent skidding or marking on any type of floor.

47-04, Blackhawk's regular price, \$27.95; on sale at... **\$26.66**

## SALE TIME

### is LAY-AWAY TIME

This year, for the first time, the family budget can still provide for those sale bargains from Blackhawk—because of Blackhawk's new this-year Lay-Away Plan. This simple plan costs you not a penny more than Blackhawk's regular cash prices—you pay 10% of the cost of the merchandise with your order, the balance within 90 days at your convenience. As soon as the balance is paid, Blackhawk ships the merchandise! And, it's an easy way to get those limited availability bargains that Blackhawk has available, for the moment we get your order, it is physically pulled and set aside for you! Remember—no interest or carrying charges on Lay-Away!

And, Blackhawk's Lay-Away Plan in no way affects Blackhawk's Time-Payment Plan, which is still available. Full Information and Time Payment Application Form are shown on the inside back cover!

## AUGUST-SEPTEMBER BARGAINS IN USED 16mm. SOUND PROJECTORS

Projector prices are exclusive of transportation and projectors, because of weight, are not mailable. For most destinations, Railway Express is the most satisfactory method, but we'll be glad to ship by freight—either truck or rail—if you request. Projectors will not be shipped C.O.D. without a deposit of \$25.00 to guarantee transportation charges.

### AMPRO SUPER STYLIST 10 (Single Case)

Current model. Has 10-watts amplification and 10-inch PM speaker. Operates at governor-controlled sound speed and at variable speeds.

**\$229.95**

### AMPRO CENTURY 5 (Single Case)

Manufactured in 1948 and 1949. Has 5-watt amplifier, 6-inch PM speaker. Runs at sound speed only on 105-125 A.C.

**\$99.95**

### AMPRO CENTURY 10

Manufactured in 1946 and 1947. Has 15-watt amplifier, 12-inch PM speaker. Runs at sound speed only.

**\$117.77**

### AMPRO PARAMOUNT 20

Manufactured in 1947 and 1948. Has 15-watts amplification and 12-inch speaker. Does not operate in reverse.

**\$179.95**

### AMPRO PREMIER 20

Manufactured from 1947 to 1949. Has 15-watt amplifier, 12-inch PM speaker. Still picture clutch.

**\$189.95**

### AMPRO PREMIER 30

Manufactured from 1950 to 1953. Has 15-watt amplifier, 12-inch PM speaker.

**\$199.95**

### AMPRO STYLIST (Single Case)

Manufactured between 1949 and 1952. Has 4-watts amplification and 8-inch speaker. Operates at sound and silent speeds. Does not operate in reverse.

**\$144.44**

### AMPRO COMPACT (Single Case)

Manufactured between 1948 and 1951. Has 5-watts amplification and 8-inch speaker. Operates at both sound and silent speeds. Does not operate in reverse.

**\$139.95**

### BELL & HOWELL 156

Manufactured from 1942 to 1945. Has amplifier of 15-watts capacity, 12-inch speaker. Operates at sound and silent speeds, and in reverse.

**\$144.44**

### BELL & HOWELL 185 (Single Case)

Manufactured from 1949 to 1951. Has amplifier of 10-watts output, 10-inch speaker. Operates at sound and silent speeds, and in reverse.

**\$199.95**

### BELL & HOWELL 138

Manufactured between 1936 and 1940. Has 6-watts amplification and 8-inch speaker. Operates on 60-cycle, AC only. Is equipped with 750-watt lamp and 2-inch focal length projection lens. Takes up to 1600-foot capacity film reels. Has motor-driven rewind. Most of these units operate at sound speed only—but a few operate on silent speed also.

**\$99.95**

### BELL & HOWELL 179

Manufactured in 1945 and 1946. Has 15-watt amplifier, 12-inch PM speaker. Operates at both sound and silent speeds, and in reverse.

**\$177.77**

### BELL & HOWELL 285C (Single Case)

Manufactured from 1952 to 1956. Has amplifier of 10-watts capacity, 6-inch PM speaker. Operates in reverse; has still picture clutch.

**\$249.95**

### DeVRY RS

Manufactured between 1941 and 1948. Has 30-watt amplifier, 12-inch PM speaker. Operates at both sound and silent speeds.

**\$112.22**

### DeVRY SUPER 16

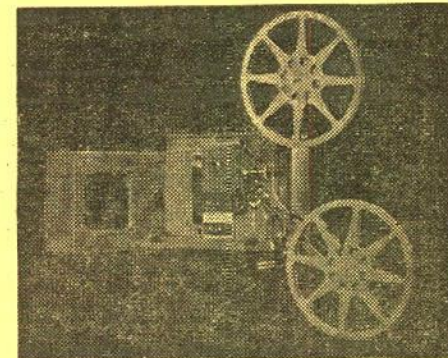
Manufactured between 1949 and 1952. Has amplifier of 15-watts capacity, 12-inch PM speaker, 750-watt projection lamp, 2-inch standard projection lens. Operates at sound speed on 60-cycle AC only. Has motor-driven rewind. Takes up to 2000-foot capacity film reels.

**\$169.95**

### EASTMAN KODASCOPE FS-10-N

Manufactured between 1946 and 1950. Has amplifier of 10-watts, 10-inch PM speaker.

**\$99.95**



### EASTMAN KODASCOPE PAGEANT (Single Case)

Manufactured between 1949 and 1954. Has 5-watts amplification and 6-inch speaker. Does not operate in reverse. Runs at sound speed only.

**\$179.95**

### NATCO 3030 (Single Case)

Manufactured between 1948 and 1951. Has 5-watt amplifier, 8-inch PM speaker. Operates at both sound and silent speeds.

**\$109.95**

### RCA 400 SENIOR (FP-10)

Manufactured from 1947 to 1950. Has amplifier of 10-watts capacity, 10-inch PM speaker. Operates at both sound and silent speeds—speeds governor controlled.

**\$169.95**

### TSI DeVRYLITE 5-R (Single Case)

Next to current model. Has 5-watts output, 6-inch PM speaker. Operates on both AC/DC. Operates at both sound and silent speeds, and in reverse.

**\$189.95**

### VICTOR MODEL 55

Manufactured between 1947 and 1949. Single case unit operating at both sound and silent speeds, and in reverse. Still picture clutch. Motor driven rewind. Has amplifier of 5-watts capacity and Alnico V oval speaker, 4"x6".

**\$155.55**

### VICTOR 56C

Manufactured in 1949 and 1950. Single case unit, operating at both sound and silent speeds. Has still picture clutch. Has amplifier of 4-watts output and 4-inch x 6-inch oval PM speaker. Operates on either AC or DC.

**\$155.55**

### VICTOR 25AC

Manufactured between 1936 and 1939. Has amplifier of 18-watts, 12-inch PM speaker.

**\$99.95**

### VICTOR 25 AC-DC

Manufactured in 1935 and 1936. Has amplifier of 5-watts output, 10-inch electro-dynamic speaker. Operates at both sound and silent speeds. Has still picture clutch.

**\$99.95**

### VICTOR 40B

Manufactured between 1941 and 1947. Has amplifier of 26-watts, 12-inch PM speaker. Operates in reverse. Has still picture clutch.

**\$119.95**

### VICTOR 40BX

Manufactured between 1942 and 1944. Has amplifier of 26-watts, 12-inch PM speaker. Operates in reverse. Has still picture clutch.

**\$99.95**

### VICTOR 56-4 (Single Case)

Manufactured from 1950 to 1952. Has amplifier of 4-watts output, 4"x6" Alnico speaker. Operates at both sound and silent speeds. Has still picture clutch.

**\$155.55**

### VICTOR 60-10 (Single Case)

Manufactured from 1950 to 1954. Has amplifier of 4-watts output, 6" x 9" oval speaker. Operates at both sound and silent speeds.

**\$177.77**

### VICTOR 60B

Manufactured between 1947 and 1949. Has amplifier of 25-watts, 12-inch PM speaker. Operates in reverse. Has still picture clutch.

**\$166.66**

### DeVRY BANTAM (Single Case)

Manufactured from 1949 to 1951. Has amplifier of 3 1/2-watts, 8-inch PM speaker. Operates on both AC and DC.

**\$139.95**



ALL ITEMS ON THESE COUPON PAGES ARE BRAND NEW, FIRST QUALITY, UNLESS OTHERWISE DESCRIBED

#### SPECIAL COUPON VALUE

##### GENUINE LEATHER GADGET BAGS

made by Service

- 41-08 9 3/4" x 4" x 6 1/2", levant grain leather, rich shade of ginger, adjustable shoulder strap, reg. \$5.95, pp. 27c, on sale at.....\$5.55
- 41-07 11" x 5 1/4" x 8", levant grain leather, rich shade of ginger, adjustable shoulder strap, reg. \$6.95, pp. 27c, on sale at.....\$6.66
- 41-06 10 3/4" x 5 1/4" x 9 1/4", levant grain leather, rich shade of ginger, adjustable shoulder strap, reg. \$7.95, pp. 27c, on sale at.....\$7.77

#### SPECIAL COUPON VALUE

Regularly \$4.95

##### AIDS POCKET VIEWER

Takes your 50-ft. 8mm. rolls of Kodachrome or B&W film which may be viewed in motion or frame-by-frame. Perfect to carry with you or send to the service man overseas. Not suitable for editing. Uses incidental light, or battery powered light accessory.

- 37-04, pp. 12c, on sale at.....\$4.44
- 37-05, light accessory, pp. 6c.....\$1.79

#### SPECIAL COUPON VALUE

##### 400-FT. 16mm. SILENT "ODD REEL"

A 400-ft., 16mm. silent length of varico material, some footage almost new. Not necessarily complete, or from the same subject. On reel.

- 150-24, pp. 14c, special at...\$1.99

#### SPECIAL COUPON VALUE

##### "SURPRISE PACKAGE"

Of one complete reel (250-ft. to 400-ft.) 16mm. sound film. No Abbott and Costello, Woody Woodpecker or Laurel and Hardy, but a lot of interesting, unusual material.

- 150-05, pp. 14c, reg. \$3.33, special at.....\$2.99

#### SPECIAL COUPON VALUE

U. S. Navy Surplus!

##### GENUINE POLAROID GOGGLES

In flexible leather frames. Normal \$2.00 retail value. First quality in every way. Ideal for summer driving, on the beach, for sports wear in bright sun!

- 70-01, Each (pp. 3c).....19c Dozen (pp. 27c).....\$1.99

#### SPECIAL COUPON VALUE

##### POWELL BOUNCE LIGHTS

A compact and versatile 4-light unit with four non-breakable ceramic sockets which swivel 90 to 100-degrees in every direction. Each light has a 19-inch handle for proper aiming. Unit has fused plug and handle for cameraman, and includes four photofloods.

- 29D02, pp. 82c, close-out priced at only.....\$6.66
- 29D03, same as above, but with eight foot extension tripod in addition to basic outfit, pp. 98c, close-out priced at only.....\$11.11

#### SPECIAL COUPON VALUE

##### LOGAN REEL CASES

All metal, baked enamel finish, piano hinge top, nickel-plated.

- 33-01 Holds twelve 200-ft. capacity 8mm. or 5-inch diameter magnetic tape reels, pp. 39c, reg. \$2.98, on sale at.....\$2.66
- 33-02 Holds twelve 400-ft. capacity 8mm. or 7-inch diameter magnetic tape reels, pp. 43c, reg. \$3.79, on sale at.....\$3.33
- 33-03 Holds twelve 400-ft. capacity 16mm. reels, pp. 55c, reg. \$4.79, on sale at...\$4.44

#### SPECIAL COUPON VALUE

##### CLOSE-OUT!

##### 8mm. MOVIE MAKING BOOKS

Publisher's regular price...\$1.75 and \$1.95 each

No choice of title, but selected by us from the following list, each.....66c

(Allow 3c postage per book.)

- 62D01—HOME MOVIE SCRIPTS
- 62D02—HOW TO MAKE VACATION MOVIES
- 62D03—HOW TO DIRECT
- 62D04—HOW TO MAKE 8mm. MOVIES
- 62D05—HOW TO DO HOME MOVIE TRICKS
- 62D06—HOW TO ACT FOR HOME MOVIES
- 62D07—HOW TO ADD SOUND
- 62D10—HOW TO PLAN A MOVIE SCRIPT

#### SPECIAL COUPON VALUE

##### LOGAN "MAGNA VIEW" ELECTRIC TABLE SLIDE VIEWER

Takes either 2"x2" or 2 3/4"x2 3/4" super slides. Has precision ground optical glass lens with magnification power of 134-times. Lens can be easily removed from outside for cleaning. Offers clear, colorful, undistorted image. Brown hammertone finish. Comes with 6-ft. UL approved cord and plug, on-off switch, easily replaced light bulb.

- 18-12, (pp. 27c), reg. \$3.99, on sale at.....\$3.66

#### SPECIAL COUPON VALUE

Regularly \$29.95

##### PREMIER M-2 PROFESSIONAL TITLER

Makes an infinite variety of colorful, interesting titles, with special effects. Has optical bench with fully adjustable camera stand, multiple effects frame, twin reflectors with extension cord and switch, lens holder and supplementary lenses, transparent plastic sheet and alignment guide.

- 16-03 (not available, you pay transportation on delivery), on sale at.....\$28.88

#### SPECIAL COUPON VALUE

This will cost you

\$3.00 more at Christmas time.....

##### SANTA CLAUS SUIT

Brand new, first quality Santa Claus suit at a wholesale price. Made of red duvetyne—coat, trousers and hat—trimmed in white. Black oilcloth belt and imitation boots. Fringe of white wool sewed on back of hat. White wool mustache and whisker set. Sizes 42-44 supplied—fill up the slack with pillows.

- 46-02, pp-31c, only.....\$6.98

#### SPECIAL COUPON VALUE

##### BLACKHAWK'S D-O-R-E-M-I

##### PACKAGE OF THREE USED 100-FT., 16mm. MUSICALS

A variety of musical films with some of today's top entertainers. All prints in good condition—some packages may have a single reverse image "Soundies" musical—some may have a single adventure or variety film instead of a musical.

- 150-16, pp-14c.....\$2.77

#### SPECIAL COUPON VALUE

##### ANSCOCHROME & KODACHROME

##### 35mm. COLOR FILM

INCLUDING DIRECT MAIL PROCESSING

- 13-03 20-exp., Super Anscochrome Daylight, pp. 6c, reg. \$3.39, on sale at.....\$3.11
- 13-08 20-exp., Super Anscochrome Tungsten, pp. 6c, reg. \$3.29, on sale at.....\$3.11
- 13-01 20-exp., Anscochrome Daylight, pp. 6c, reg. \$2.99, on sale at.....\$2.77
- 13-04 20-exp., Kodachrome Daylight, pp. 6c, reg. \$2.99, on sale at.....\$2.77
- 13-05 20-exp., Kodachrome Flash, pp. 6c, reg. \$2.99, on sale at.....\$2.77

#### SPECIAL COUPON VALUE

Regularly \$32.95

##### "3V" TRI-VISION PANORAMIC TITLER

SPECIAL EFFECTS MADE EASILY WITH MOST CAMERAS!

Now! Title as you shoot with the aid of "3V" lens attachment with its parallax-free viewfinder. You don't waste film for titles—you SUPERIMPOSE! Centering is simple and accurate! Lightweight and easily carried with camera—works with both 8mm. and 16mm.—for both indoor and outdoor titling. The "3V" unit which is a part of the titling kit permits all sorts of superimposed trick shots completely apart from titles.

- 36-08, pp. 35c, on sale at.....\$31.11

#### SPECIAL COUPON VALUE

##### 2"x2" SINGLE FRAME COLOR SLIDE SPECIAL

##### THREE HOLIDAY SETS

each containing 25 2"x2" S. F. COLOR SLIDES

- ARBOR DAY
- FLAG DAY
- INDEPENDENCE DAY

Each set, pp. 6c...99c All three, pp. 18c...\$2.79

#### SPECIAL COUPON VALUE

Regularly \$12.95

##### 56EE 4-SOCKET FOLDING LIGHT BAR

A fully UL approved 4-socket folding light bar with a special molded handle which places the light ABOVE the camera, eliminating the possibility of light filtering into the cell of most electric-eye cameras which have cells located in the lower portion of the camera body. Comes complete with four 375-watt midgeet photoflood lamps attractively finished metal carrying case with lucite handle, piano hinge and beaded edges for safest handling and maximum strength. Case holds folded bar with lamps in sockets.

- 29-05, pp. 47c, on sale at.....\$12.22

#### SPECIAL COUPON VALUE

Brand new, first quality

35mm. color filmstrip.....

##### "ANIMALS IN NATURE"

Contains 39 different full color frames, each picture captioned. It covers three classifications: (1) Hoofed mammals, (2) Flesh eaters and (3) Rodents.

- Wild Life filmstrip, regularly \$5.00 (pp. 6c), August-September sale priced at only.....\$2.49

#### SPECIAL COUPON VALUE

##### 2"x2" BLACK & WHITE SLIDE SETS ON WORLD WAR II

Each set contains twenty double frame 35mm. black and white captioned slides.

- Price, each set (pp. 6c).....79c

All 12 sets (pp. 27c).....\$7.99

- WW1—PEARL HARBOR, JAP ATTACK
- WW4—HOLLANDIA
- WW2—SAIPAN
- WW6—IWO JIMA
- WW8—NORMANDY INVASION
- WW9—INVASION BEACHHEAD
- WW10—PATTON BREAKS OUT
- WW11—INVASION OF SOUTH PACIFIC
- WW12—THE SEVENTH DRIVES NORTH
- WW5—GUAM
- WW3—TARAWA
- WW7—OKINAWA

#### SPECIAL COUPON VALUE

##### KODACHROME 50' 16mm. MAGAZINE CAMERA FILM

Including Processing and Direct Return by Dynacolor

- 25-11 Daylight (pp. 18c), reg. \$6.99, on sale at.....\$6.49
- 25-12 Type A (pp. 18c), reg. \$6.99, on sale at.....\$6.49

#### SPECIAL COUPON VALUE

##### PACKAGE OF 24

##### GOOD USED 100-FT. FILM CANS

Ideal for editing and storage. 54-01, pp. 35c, special at.....99c

#### SPECIAL COUPON VALUE

##### Special Purchase! COMBINATION OF NEW 400-FT. 16mm. REEL AND USED CARRYING CASE

Blackhawk Item 54-13

- Each combination (pp. 27c).....79c
- Three (pp. 35c).....\$1.99

#### SPECIAL COUPON VALUE

##### PUEBLO DWELLERS AND AN APACHE RAID

A thrilling set of 31 brilliantly colored single frame 2"x2" color slides.

- Set of 31 "Pueblo Dwellers and an Apache Raid" color slides (pp. 6c) \$1.49

THE "COUPONS" IN WHICH MERCHANDISE ITEMS ARE LISTED HAVE NO VALUE IN THEMSELVES, AND NEED NOT BE CLIPPED AND RETURNED WITH ANY ORDERS.



#### SPECIAL COUPON VALUE

##### TELESAR F:1.9 8mm. WIDE ANGLE AND TELEPHOTO LENS SET

Here is a set of excellent 8mm. lenses in standard D mounts—fit most cameras other than Bell & Howell. Lenses are hard coated, and have click stops. Telephoto is 1 1/2-inch in focusing mount, wide angle is 6.5mm., fixed focus.  
28-18, pp. 23c, on sale at.....\$23.33

#### SPECIAL COUPON VALUE

##### Regularly \$6.95 per 100 EMDE ALUMINUM/GLASS MOUNTS FOR 2"x2" SLIDES

The famous one piece aluminum frame with ultra-thin micro glass for mounting transparencies in standard Eastman ready mounts, or others of similar thickness, without removing transparency from mount.  
15-09, box of 100, pp. 39c,  
on sale at .....\$6.66

#### SPECIAL COUPON VALUE

##### Regularly \$8.95 CINEFLEX REFLEX VIEWER For D-Mount 8mm. Cameras

A reflex viewing system that gives complete parallax elimination for attaching to any D-mount (excludes Bell & Howell) camera. You shoot what you see! Made by Elgett.  
37-06, pp. 23c, on sale at.....\$8.44

#### SPECIAL COUPON VALUE

##### Regularly \$12.95 Airequest ULTRAMATIC 2" x 2" COLOR SLIDE VIEWER

Shows 20 color slides automatically! Comes complete with one magazine and two C-type batteries.  
18-01, pp. 31c, on sale at.....\$11.11  
17-05, extra magazine, pp. 3c, only .49c

#### SPECIAL COUPON VALUE

##### EKTACHROME 35mm. COLOR FILM

INCLUDING DIRECT MAIL PROCESS-  
ING BY TECHNICOLOR  
13-06 20-exp. daylight (pp. 6c), reg. \$2.99, on sale at .....\$2.77  
13-07 20-exp. flash (pp. 6c), reg. \$2.99, on sale at .....\$2.77

#### SPECIAL COUPON VALUE

##### Regularly \$4.79 MANSFIELD "LITTLE GEM" SPLICER for 8mm. & 16mm.

Heavy-duty construction, all steel with die cast base, rubber feet, patented radial scraper.  
34-05, pp. 23c, on sale at.....\$4.44

#### SPECIAL COUPON VALUE

##### NEW 400-ft. 8mm. SILVER-TIN CANS

Brand new, first quality, bright silvery lined cans, embossed for rigidity! And the price is but a fraction of the regular.  
54-07, six (pp. 31c) .....\$1.33  
54-07, twelve (pp. 39c) .....\$2.22  
54-07 twenty-four (pp. 78c) .....\$3.99

#### SPECIAL COUPON VALUE

##### Value New, \$15.00 to \$18.00! 35mm. B&W FILMSTRIP GRAB BAG

Six different 35mm. black and white filmstrips on a variety of subjects are included in each of these "Grab Bags". The strips generally are preview copies—some are brand new. All are in good usable condition. Frames per strip average 30 to 50.  
150-17, pp. 12c .....\$2.99

#### SPECIAL COUPON VALUE

##### 2"x2" SLIDE JACK POT 50 SLIDES FOR \$1.19

Here's a buy of buys in 2"x2" slides—regular double frame 35mm. type—practically all in color. These slides are tests, mis-matches, seconds and imperfections—a miscelany, no complete sets.  
"Jack Pot" of 50 2"x2" slides,  
No. 71-01, pp. 6c .....\$1.19

#### SPECIAL COUPON VALUE

Regularly \$13.98

##### PICTAR SLIDE EDITOR

Holds 20 2"x2" slides against slanted Plexi-glass panel illuminated with standard 40-watt lamp. Gives 4200K daylight blue illumination.  
18-05, pp. 35c, on sale at.....\$12.22

#### SPECIAL COUPON VALUE

##### ANSCOCHROME 100' ROLL 16mm. CAMERA FILM

Including processing and direct return by Ansco  
25-01 100-ft. roll, daylight, reg. \$9.99;  
pp. 18c, on sale at .....\$9.66  
25-02 100-ft. roll, tungsten, reg. \$9.99;  
pp. 18c, on sale at .....\$9.66

#### SPECIAL COUPON VALUE

Regularly \$5.98

##### UNIVERSAL TITLER for 8mm. and 16mm. cameras

Professional-like titles, special effects, animation. Complete with detailed instruction book.  
36-06, pp. 35c, on sale at.....\$5.55

#### SPECIAL COUPON VALUE

##### KODACHROME 100' ROLL 16mm. CAMERA FILM

Including processing and direct return by Duynacolor  
25-09 100-ft. roll, daylight, reg. \$9.99;  
pp. 18c, on sale at .....\$9.49  
25-10 100-ft. roll, type A, reg. \$9.99;  
pp. 18c, on sale at .....\$9.49

#### SPECIAL COUPON VALUE

Regularly \$2.49

##### MANSFIELD 2" x 2" SLIDE FILE

All metal construction—snap lock—gray hammerleid finish. Holds 750 ready mounts or 300 glass-mounted slides. Index card top, strips of index numbers and twelve metal dividers.  
12-05, pp. 35c, on sale at.....\$2.22

#### SPECIAL COUPON VALUE

##### YANKEE SLIDE TRAY FOR REVERE AND WOLLENSAK

A fine quality molded plastic slide tray that holds 36 slides. Our No. 17-04.  
One, reg. 98c (pp. 8c), on sale at..\$.88  
Three, reg. \$2.59 (pp. 27c), on sale \$2.29  
Twelve, reg. \$9.98 (pp. 51c), sale \$8.88

#### SPECIAL COUPON VALUE

Regularly \$22.95

##### 35mm. CINELARGER

Permits making black and white, or color, negative enlargements from your 2"x2" color slides. Gives eight 2 1/4" by 2 3/4" negatives to roll of No. 620 film.  
23-03, pp. 27c, on sale at.....\$19.99

#### SPECIAL COUPON VALUE

##### NEW 400-ft. 16mm. FIBREGLASS REELS

Light weight, rigid, smooth running reels made of Fibreglass—extremely resistant to damage—not adversely affected by extremely low temperatures.  
51-12, six (pp. 17c), on sale at...\$1.99

#### SPECIAL COUPON VALUE

##### 2"x2" color slide set ..... JACK AND THE BEAN STALK

Over 30 2"x2" single frame type color slides in set (pp.6c), No. 3288, only .....  
\$2.22

#### SPECIAL COUPON VALUE

##### COMBINATION SPECIAL

3 GOOD USED 1600-FT. CAPACITY  
16mm. REELS  
3 GOOD USED 1600-FT. SINGLE REEL  
FIBRE SHIPPING CASES  
54-14, pp. 75c, special at.....\$4.44

#### SPECIAL COUPON VALUE

##### KEYSTONE 40-SLIDE TRAY FOR 2"x2" SLIDES

For use with American Optical, Bell & Howell, Keystone, TDC and Viewlex projectors. Made of molded plastic. Our No. 17-03.  
One, reg. 89c (pp. 17c), on sale at..\$ .77  
Three, reg. \$2.49 (pp. 27c), on sale \$2.22  
Twelve, reg. \$7.98 (pp. 51c), sale \$7.49

#### SPECIAL COUPON VALUE

##### Regularly \$1.49 per 100 BLACKHAWK 2"x2" READY MOUNTS

Unprinted cardboard ready mounts for mounting your double frame (regular 8-perforation, 35mm.) or single frame (4-perforation, 35mm., such as frame from regular filmstrip).  
15-06, 100 single frame, pp. 20c...\$1.22  
15-07, 100 double frame, pp. 18c...\$1.22

#### SPECIAL COUPON VALUE

Regularly \$2.79

##### ZADIX BATTERY VIEWER

Wide viewing screen, optical glass lens, light goes on when slide is inserted.  
18-06, pp. 15c, on sale at.....\$2.66

#### SPECIAL COUPON VALUE

Regularly \$17.95

##### 8mm. and 16mm. CINELARGERS

Enlarge individual frames of your 8mm. and 16mm. movies to regular 620 black and white or color negative rollfilm.  
23-02 16mm., pp. 27c, on sale at..\$16.66  
23-01 8mm., pp. 27c, on sale at...\$16.66

#### SPECIAL COUPON VALUE

Regularly \$9.99

##### MANSFIELD MASTER REWINDERS for 8mm. and 16mm. film

Die cast construction, machine cut steel gears, built-in tension brake. Take up to 2000-ft. capacity reels.  
32-01, pp. 31c, on sale at.....\$8.88

#### SPECIAL COUPON VALUE

Regularly \$1.77 each

##### GENUINE AIREQUIPT 2"x2" SLIDE MAGAZINES

Each, 17-01, pp. 12c.....\$1.66  
Six, 17-01, pp. 35c.....\$9.66

#### SPECIAL COUPON VALUE

##### 8mm. KODACHROME

INCLUDING DIRECT MAIL PROCESS-  
ING BY DYNACOLOR  
25-ft. double 8mm. roll, daylight  
(25-05) or tungsten (25-06), pp.  
8c per roll, reg. \$3.69, on sale  
at, each .....\$3.55

#### SPECIAL COUPON VALUE

Regularly \$11.95

##### STANDARD SPIRAL MOUNT 1 1/2-INCH PROJECTION LENS

A fine quality import from Japan, fits such projectors as Ampco, DeVry, Natco, RCA and Victor. Gives picture 50% wider than 2-inch lens at same distance from screen.  
28-17, pp. 12c, on sale at.....\$9.99

#### SPECIAL COUPON VALUE

Regularly \$4.79

##### ARUBA BC FLASH GUN

Has fan-fold reflector and plastic case. Uses 22 1/2-volt battery with capacitor, or capacitor may be removed and gun used with three pen light batteries. Batteries not included.  
11-01, pp. 27c, on sale at.....\$3.99

#### SPECIAL COUPON VALUE

Regularly \$3.98

##### ESCO "TYPE-ON" FIBREBOARD-GLASS 2"x2" SLIDE BINDERS

Two slide glasses, die-cut fibreboard frame and heavy kraft gummed cover. Box of 100.  
15-01, pp. 39c, on sale at.....\$3.77

#### SPECIAL COUPON VALUE

Regularly 89c each

##### IMC MOLDED PLASTIC TRAYS FOR 2"x2" SLIDES

Holds 30-slides. Operates in American Optical, Bell & Howell, Keystone, TDC and Viewlex projectors—either automatic or finger-tip automatic types.  
Each, 17-02, pp. 8c, on sale at.....66c  
Three, 17-02, pp. 27c, on sale at..\$1.89

#### SPECIAL COUPON VALUE

##### NEUMAIDE 16mm. BOLTED BASE REWINDERS

The widely used professional rewriter for 16mm. film—takes up to 2000-ft. reels. Our No. 32-02.  
Single end, pp. 27c, reg. \$9.79, on sale at .....\$ 9.22  
Pair, pp. 35c, reg. \$18.98, on sale at .....\$17.77

#### SPECIAL COUPON VALUE

Regularly \$2.59

##### KIMAC SLIDE PROTECTORS FOR 2"x2" SLIDES

Transparent plastic sleeves with which to cover your 2"x2" slides for safe handling and projection. Box of 100.  
15-04, pp. 12c, on sale at.....\$2.22

#### SPECIAL COUPON VALUE

##### FIBREBUILT VULCANIZED FIBRE

CARRYING/SHOPPING CASES FOR  
FOUR 1600-FT. CAPACITY 16mm. REELS  
Brand new, first quality—made to sell for much, much more.  
33D04, pp. 39c, close-out priced  
at only .....\$2.88

#### SPECIAL COUPON VALUE

##### COMBINATION SPECIAL

12 GOOD USED 400-FT.  
16mm. FILM CANS  
52-02, pp. 51c, special at.....\$1.99

#### SPECIAL COUPON VALUE

##### ANSCOCHROME 50' 16mm. MAGAZINE CAMERA FILM

Including Processing and Direct Return by Ansco  
25-03 Daylight (pp. 18c), reg. \$6.99,  
on sale at .....\$6.49  
25-04 Tungsten (pp. 18c), reg. \$6.99,  
on sale at .....\$6.49

#### SPECIAL COUPON VALUE

##### 2"x2" COLOR SLIDES ON BIBLE SUBJECTS

B-12 JOSHUA B-25 JOSHUA  
B-17 SAUL B-26 ESTHER  
B-23 ELISHA B-27 JEREMIAH  
B-24 ISAIAH B-28 EZEKIEL  
Price, each set of about 40 single frame type 2"x2" color slides (pp. 6c) .....\$2.77  
Any four sets (pp. 15c) .....\$9.99



# BLACKHAWK'S BIG SELECTION OF ONE-OF-A-KIND USED 16mm. SOUND FILMS

(Allow 14c postage for each film of 400-feet or less; 19c postage for each film of 401 to 800-feet; and 24c for each longer film.)

ALL PRINTS COMPLETE AND IN GOOD CONDITION!

**AERIAL NAVIGATION** (1000-feet). Demonstrates location markers by beams from Range Stations, which are usually found in principal cities along the air route, to aid the pilot in his flight. \$12.95

**AFRICAN PIGMY THRILLS** (300-feet). Rarely seen "little people" of the Dark Continent are photographed in the heart of the African jungle as they execute a feat of primitive engineering... making a bridge across a crocodile-infested river. \$9.95

**AIRWAYS OF THE FUTURE** (325-feet). A March of Time film which shows the importance of the Air Transport Command in 1942 when war supplies were badly needed in Africa, and how a global network of air routes was built. Includes scenes of training and activities of ATC personnel. \$9.99

**AQUA FROLICS** (300-feet). Unusual water sports are pictured—basketball under water—diving from 300-foot cliffs—water ski champions, and reckless canoeists in wild rapids. \$8.95

**ARMY NURSE** (600-feet). Pictures duties and work of the Army nurses near battle lines, in field and evacuation hospitals, and on airplanes and ships during World War II. A film which girls contemplating Army nursing would especially appreciate. \$6.99

**AROUND THE WORLD IN NEW YORK** (500-feet). The "old world" culture and customs of the many national groups in the population of New York City are contrasted with the interests and diversions of the completely assimilated younger generation. \$9.99

**AS OUR BOYHOOD** (600-feet). A story in which education is the star, showing the strides being made in the improvement of schools and teaching techniques available to the Negro youth in the Southern states. \$9.99

**AUTOMOTIVE SERVICE** (400-feet). Gives an overall view of the jobs in this field; opportunities for advancement, pay scales, and training required. \$9.95

**BALZAC** (800-feet). A film biography of the famed French novelist, Honore de Balzac, (1799-1850), using contemporary pictures, portraits and statues. This film constitutes one of the first attempts to use film technique in the fields of history and literary criticism. \$8.88

**BASIC MOTION PICTURE TECHNIQUE (CELLULOID COLLEGE)** (550-feet). How to make motion pictures, including panning, using the tripod, shot breakdown, screen direction, matching action, news-reel technique and build-up. At the end, a playlet is given incorporating all the techniques previously emphasized. \$14.44

**BASIC TYPING-MACHINE OPERATION** (1000-feet). Points out the principal parts of various makes of typewriters and explains their functions. \$9.99

**BATTERY, IGNITION AND ELECTRICAL SYSTEM** (1000-feet). How to check and service the battery; check the starting motor, generator, lighting circuit, electrical instruments and ignition system. \$8.95

**BEEBLE STUDIES** (400-feet). The ugly beetle becomes an extremely interesting object as camera close-ups and narration show us how nature has equipped beetles for their short lives. \$9.99

**BEFORE THE DOCTOR COMES** (850-feet). Pictorially illustrates the proper procedures for caring for accident victims during vital minutes after an accident occurs and before medical help has arrived. \$14.44

**BORNEO, FLORES AND BALI** (350-feet). A travelogue through Borneo, home of the famous head hunters, the Dyaks. A camera visit to the colorful Lake of Flores, and shots of native dances of Bali. \$9.99

**BRAZIL'S FISHING SCHOOL** (500-feet). Study of Marambaia Fishing School on the Bay of Ilha Grande, which trains Brazilian boys in fishing arts; building and handling small boats, and making and repairing nets. \$8.99

**BROKEN APPOINTMENT** (1100-feet). Material to stimulate discussion on many issues, including marital counseling; supervisory techniques in every health department, and especially useful in nursing education. \$12.22

**THE BUTLER** (450-feet). One of the "Movies Are Better Than Ever" series narrated by Paul Killiam. This original Thomas Edison production has a copy-right of 1915, and features old-time performers William Wadsworth and Gladys Leslie. \$12.22

**CAPERS IN CLAY** (300-feet). Clever effects with skillful fingers and bits of clay. \$7.99

**CAPITAL STORY** (700-feet). Pictures the relationship between industry and science, the functions and activities of the Public Health Service, the duties and responsibilities of a research chemist, and the processes used in chemical analysis. \$5.99

**CAUSES AND IMMEDIATE EFFECTS OF THE FIRST WORLD WAR** (800-feet). Animated maps, scenes from newsreels of the period and commentary are used to tell the story of the first World War, 1914-1918, and to suggest some of its effects as seen in the years, 1918-1923. \$19.95

**CEBU** (350-feet). Pictures one of the oldest European settlements in the Orient. Shows imports, interesting landmarks, and products. \$8.88

**CELLO CONCERT** (350-feet). Compositions by composers, Haydn, Schumann and Bach are played by Leonard Rose, cellist. \$5.55

**CHILDREN ON TRIAL** (2250-feet). Describes juvenile delinquency in England, and steps being taken by official welfare departments to rehabilitate delinquents. Tells the story of three teen-agers who are sent to approved schools for rehabilitation, and the outcome of their training there. \$29.95

**CHINA CLAY** (350-feet). Shows the mining, processing and use of china clay in England. Shows the clay being taken from the Treviso pit in Cornwall, and the many uses of sand; an important by-product of clay. \$5.55

**CHINA NACION ETERNA** (650-feet). The Spanish version of the interesting and timely March of Time film, "Inside China Today". \$9.99

**CLOUDS GO TO WORK** (300-feet). Shows many uses of water, how water's potential energy is transformed into kinetic energy of electricity, water's use in irrigation, and the water supplies of cities and towns. \$9.95

**CLUTCH AND HAND BRAKE** (300-feet). How to determine the amount of clutch pedal clearance of "lash"; how to correct abnormal "lash"; check clutch for slipping, grabbing or drag; and inspect and adjust the hand brake. \$4.99

**COOLIDGE QUARTET** (300-feet). A good program of winter sports. Includes shots of swimming in icy waters and techniques for rescuing persons who have fallen through ice; a demonstration of the popular Scottish game of Curling; pointers on skiing; and pictures of former Olympic champion Jaffe teaching children to ice skate. \$7.95

**FUNDO IN CHILE** (500-feet). Life on one of the great fundos or ranches of South America, including the community of hundreds of workers, their use of modern methods of farming, and the activities of the school and the church. \$9.95

"drama of the woods" was written by Frank McGlynn for a motion picture produced in 1912 by Thomas Edison, starring Mary Fuller. Paul Killiam adds a background of entertaining conversation to give interest and comedy to the old-time production. \$12.22

**DEEP END** (300-feet). A swimming and diving film, featuring champion divers going through the paces from the 33-foot tower to the three meter spring-board, and expert swimmers who demonstrate various strokes. \$7.95

**DISCIPLINE: GIVING ORDERS** (400-feet). A film on supervision, shows how to give clear orders and maintain office discipline; results of gaining workers' confidence and of instilling fear in employees. \$9.95

**DISCIPLINE: REPRIMANDING** (400-feet). How supervisors should reprimand employees; how to increase office efficiency and production through correct disciplinary methods. \$9.95

**DIVING FUNDAMENTALS** (300-feet). The following points are explained and demonstrated under the instruction of Fred Cady: the hurdle jump, determining the correct distance, arm action, proper take-off and lift, and correct entry into the water. Stop-motion photography is used at various points for detailed study. \$7.95

**DOG DAYS** (300-feet). Wire-haired terriers, their breeding, feeding and care, together with explanations of championship points such as muzzle, jaw, feet and tail posture. \$9.99

**DOPING TECHNIQUES** (300-feet). Establishes the necessity for dope in airplane fabric covering and demonstrates the technique of brushing, spraying, sanding, hand-rubbing and waxing. \$4.99

**DRILLING A HOLE IN A PIN** (300-feet). How to lay out two holes at each end of a one and one-fourth inch diameter pin; and drill the holes on the sensitive drill press. \$4.99

**DRILLING AND TAPPING CAST STEEL** (500-feet). How to drill and tap blind holes in cast steel on a radial drill, using a jig with a loose drill bushing to locate the holes. \$7.99

**DRILLING, BORING, AND REAMING WORK** (300-feet). Cutting a tapered hole in a forged gear blank, using the taper attachment; centering the piece in a chuck, rough-facing, drilling, taper-boring and reaming. \$4.99

**DRILLING TO A LAYOUT AND SPOT-FACING CAST IRON** (500-feet). How to drill to a layout and spot-face the underside of a valve body flange, using the radical drill. \$7.99

**EGMONT** (350-feet). Beethoven's Overture conducted by Schmidt-Genter and played by the Vienna Philharmonic Orchestra. \$7.77

**ELEMENTARY MANUAL TRAINING** (325-feet). Illustrates plans for making a small wooden gift box. The instructor selects proper tools and shows a small boy how to measure, saw and plane the various pieces needed. \$6.66

**EMANUEL FEUERMAN** (300-feet). "Rondo, Opus 94" by Anton Dvorak and "Spinning Song" by David Popper are played by the renowned cellist. \$6.66

**EMPLOYING BLIND WORKERS IN INDUSTRY** (600-feet). Actual instances of blind workers performing jobs in industry; types of work which can be done by blind persons; role of employment specialists in placing and training blind workers. \$5.99

**EULA BEAL, CONTRALTO** (350-feet). The charming and talented singer presents Bach-Gounod's "Ave Maria" and Tchaikowsky's "None But The Lonely Heart". \$7.77

**EVERLASTING TRIANGLE** (500-feet). Whitty narration and piano accompaniment by Paul Killiam form background for this Thomas Edison motion picture which was produced in 1914. \$12.22

**THE FACE ON THE BARROOM FLOOR** (300-feet). A hilarious comedy starring Charlie Chaplin. \$11.11

**FACING, TURNING, BORING, GROOVING AND CHAFERING** (1000-feet). Demonstrates these operations on a vertical boring mill with the simultaneous use of both hands; the securing of work in a special fixture; precautions to be followed in machining; and the use of a surface gage and test indicator. \$7.99

**FEEDING THE PATIENT** (400-feet). A film of special interest to those in the nursing profession. Explains the factors which affect appetite and digestion, and the procedures of the nurse in feeding recumbent and convalescent patients. \$7.95

**FILIPINO FARMERS** (325-feet). Life and customs of the people of Luzon. Shows life and cultivation of rice in the lowlands and on the amazing terraces of Banawe. \$9.95

**FIRST IMPRESSIONS** (500-feet). A supervisory film showing how to introduce new employees to their jobs for the best first impression. \$9.95

**FITTING AND SCRAPING SMALL BEARINGS** (1000-feet). Scraping split and solid bearings; laying out and chipping oil grooves; fitting the shaft to the bearings. \$9.95

**FIXED GAGES** (500-feet). Use of snap, plug, ring, thread, screw-plug and flush-pin gages; their importance in modern mass production. \$6.66

**FOOD FOR FIGHTERS** (300-feet). Shows how the Quartermaster Corps of the United States Army processed and transported food to the armed forces during World War II. \$5.98

**FOOD—SECRET OF THE PEACE** (750-feet). Food is shown as an important factor in promoting the international good will which can pave the way for increased foreign trade without which prosperity in America cannot be assured. \$8.88

**FOR SAFETY'S SAKE** (400-feet). Rules of safety for workers of industry in using power tools. \$9.95

**FOUR MELODIES IN ALLEGRETTO** (350-feet). "The Cat's Fugue" by Searlatti; "Ballet of Chicks in Their Shells" by Moussorgsky; "Flight of the Bumble Bee" by Rimski-Korsakov and "The Swan" by Saint-Saens played by the Radio Philharmonic Orchestra of Italy conducted by Ferrando Previtali. \$5.55

**GAGE BLOCKS AND ACCESSORIES** (500-feet). Why accessories are used with gage blocks: how to inspect a plug gage, and an adjustable snap gage; a profile gage, a ring gage and a screw-thread pitch. \$5.98

**ADVANCED TYPING—DUPLICATING AND MANUSCRIPT** (1200-feet). How to make a master of duplicating; correct a stencil using hectograph ribbon or carbon; use of elcromatic hectograph or duplicating machines; type manuscripts with footnotes. \$9.95

**AIRWAYS OF THE FUTURE** (325-feet). A March of Time film showing the importance of the Air Transport Command during World War II. Pictures how a global network of air routes was built, and includes scenes of training and activities of ATC personnel and shots of obscure air terminals abroad. \$7.77

**ALONG CAME A DUCK** (250-feet). A Toddler Cartoon. \$6.66

**ALONG THE LIFE LINE OF THE BRITISH EMPIRE** (400-feet). A trip from India through the Suez—Mediterranean—Gibraltar to England. \$9.95

**AMERICANS ALL** (500-feet). A survey of racial and religious tensions throughout the United States, and of programs for combatting prejudices, particularly the Springfield, Massachusetts, plan for inter-cultural education. A March of Time presentation. \$11.11

**THE AMERICAN WAY** (300-feet). A comparison of the government "of the people and by the people" in the United States with the dictatorships in European countries. Shows how the basis of our government changes and grows to meet the needs of times, and points out how the constitution operates to guarantee all our rights and freedoms. \$6.99

**AMERICA'S HIGH SPOTS** (300-feet). Highlights of scenic localities of America from coast to coast. \$9.95

**ANDRES SEGOVIA, JAN PEECE AND NADINE CONNER** (950-feet). An outstanding film of concert music by a renowned musician and opera stars. A

visit with guitarist Andres Segovia in his Paris studio, where he discusses the characteristics of the guitar and plays a variety of selections to illustrate the versatility of the instrument. Jan Peerce sings "O Paradiso" from "L'Africaine" by Meyerbeer; Nadine Conner sings Norina's Aria from "Don Pasquale," and the two join in the duet from "Lucia di Lammermoor". \$24.95

**ASK UNCLE SOL** (350-feet). A hilarious comedy starring Eddie Lambert and Edith Mann. \$9.95

**AT YOUR COMMAND** (1040-feet). A report to American farmers showing many of the specialized services available through the Department of Agriculture, oil company tank wagon drivers, county agents, tractor dealers and college extension courses. Farm wives and children will be interested in sequences showing services of the Bureau of Home Nutrition and Home Economics, and the work of the 4-H Club and Future Farmers of America. \$12.99

**BALI—THE PARADISE ISLAND** (350-feet). A film visit to the picturesque island in Indonesia. Shows elaborately carved temples; rice, the staple food, being cultivated and threshed by native women; visits to the village market square; pictures pottery making and deals with the Balinese religious ceremonies and dances of the people. \$9.99

**BARBER OF SEVILLE** (225-feet). A Woody Woodpecker cartoon. \$11.11

**BATTLE FOR BREAD** (600-feet). A March of Time film depicting how the Food and Agriculture Organization has solved the tremendous problems of doubling the world's food output, largely by a process of education in agricultural techniques in foreign lands. \$12.22

**BATTLE OF BRAINS** (350-feet). Emphasizes that war is not only a battle of men and materiel, but a battle of brains, with well-planned strategy and the co-ordinated efforts of a country of utmost importance. Compares World War II and the war in 1914. \$6.99

**BIG FISH** (300-feet). Battles royal with deep-sea fighters—sailfish—marlin—even whales. \$9.99

**BLESSINGS OF GRASS** (700-feet). Shows how the Forest Service of the U. S. Department of Agriculture has worked out a program of range management over the years, and has developed the range resources of the national forests for maximum permanent production and use in the interest of a stable, prosperous livestock industry with full protection of the watershed. \$9.99

**BOSCO'S EASTER EGGS** (250-feet in color). A Harman-Ising cartoon. \$17.77

**BOY MEETS DOG** (325-feet). A Walter Lantz cartoon. \$7.77

**BRAT CAT** (225-feet). An Oswald the Rabbit cartoon. \$7.77

**BRING 'EM IN TO BUY** (700-feet in color). An interesting pictorial break-down of the tremendous selling power of mass advertising in leading magazines and key city newspapers throughout the United States. A background of the advance and detailed work and research which goes into the national advertising presentation of leading products. \$12.22

**BYRCE—ZION—GRAND CANYON** (300-feet). A visit to Bryce's horseshoe-shaped bowl with its scenic wonders, and a journey on tunneled highways to Zion Canyon and its parade of inspiring and beautiful peaks. A tour of the more familiar Grand Canyon completes the filmed travelogue. \$9.95

**A BULLY FROG** (250-feet). A Terrytoon cartoon. \$6.66

**BULLY ROMANCE** (250-feet). A Gandy Goose cartoon. \$6.66

**CALL OF THE WEST** (300-feet). Western "ditties" in this musical program include "Texas Strip", sung by Margie Becker; "There Is No Sunshine", by Spade Cooley and Tex Williams, and "Call of the Canyon" by Alvino Rey's orchestra and the King Sisters. \$7.95

**CAPTAIN COMBAT** (300-feet). A Merrytoon cartoon. \$6.99

**CARBURETION** (1100-feet). Explains through animation, the functions, parts and variations of aircraft engine-carburetors; air and gas mixtures used; variations in ratio of gas and air desirable for idling, acceleration, and maximum power; and special problems created by dives and operation at high altitudes. \$9.99

**CARIBBEAN HOLIDAY** (300-feet). A journey to the colorful islands of the West Indies, with special emphasis on leading cities and scenic localities and native songs and dances. \$9.95

**CARNIVORA NO. 1** (350-feet). Described and depicted in this film are the largest and most ferocious of all the carnivores, the cats and the bears. Pictures Bengal and Siberian tigers, the fiercest of the cats, and includes the lion, leopard, jaguar, ocelot, American wildcat, Canadian lynx and the common house cat. Bears shown are the American and Mexican black bears, the cinnamon or Alaskan bear, brown bear and polar bear. \$9.95

**CARNIVORA NO. 2** (350-feet). The great range and variety of the carnivores is illustrated in this film, which includes both tree-climbing and sea-living animals. The characteristics of the canine family are described, with close-ups of many of the animals, and seals and their relatives, the walrus, are described. Smaller carnivora, including badger, otter, weasel, panda and others, are seen. \$9.95

**CARROLL GLENN, VIOLINIST** (300-feet). Includes Wieniawski's "Mazurka", Tchaikowsky's "Canzonetta from Concerto" and Hobay's "Hejre Kati". \$6.66

**CARRYING THE MAIL** (600-feet). An exciting western starring Wally Wales and his horse, "Silver King", Perry Djarling and Yakima Canutt. \$14.99

**CASE OF THE MISSING HOUR** (425-feet). A story of mystery from the files of Public Prosecutor Stephen Allen, played by John Howard. Co-stars Anne Gwynne as Allen's secretary, and Walter Sange as Police Lieutenant Evans. \$5.55

**CASE OF THE MURDER MELODY** (425-feet). A musical composition is instrumental in solving a murder in this story starring John Howard as Stephen Allen, Public Prosecutor. \$5.55

**CASE OF THE SHATTERED MIRROR** (425-feet). Public Prosecutor, Stephen Allen, played by John Howard, finds the solution to a crime in this murder mystery. \$5.55

**CASE OF THE STRANGE SUICIDE** (425-feet). Another in the series of stories of mystery and intrigue starring John Howard as Public Prosecutor, Stephen Allen. \$5.55

**CASE OF THE SWARTHY MAN** (425-feet). If you like a mystery, you're certain to enjoy this quarter-hour show in which John Howard stars as Stephen Allen, Public Prosecutor. \$5.55

**CASE OF THE YELLOW TICKET** (425-feet). An exciting mystery show from the files of Stephen Allen, Public Prosecutor. \$5.55

**CELEBS—KOMODO** (300-feet). A visit to two strange islands. See native houses built on stilts; unusual burial grounds and burial customs; giant lizards and other strange animals of the country. \$9.99

**THE CHIMP'S VACATION** (300-feet). Everyone will enjoy the comical antics of "Shorty", the chimpanzee. \$9.99

**CHIMP, THE SAILOR** (300-feet). "Shorty", the chimpanzee, goes to sea on a sailing yacht, and young and old will laugh at the amusing episodes which take place. \$9.99

**CINDERELLA** (300-feet). A charming adaptation of the familiar story. \$9.99

**COMMUNITY SING** (250-feet). This is a community sing program that's really fun! Don Baker, organist, and the Song Spinners lead the singing of "I'm Thinking Tonight of My Blue Eyes", "My Baby Just Cares For Me", "Paper Doll" and "Let's Have a Little Lesson in Elocution". \$8.88

**COOLIDGE QUARTET** (300-feet). Two popular classics are played by the Coolidge Quartet, a string

ensemble. Presented are "Andante from String Quartet in E Flat Major" by Carl Von Dittersdorf, and the "Fuge" from Beethoven's "Quartet in C Major, Opus 59, No. 3". \$6.66

**CORAL AND ITS CREATURES** (275-feet). The story of the polyps which build coral reefs, and of the other animals and plants which live in coral. Included in the pictures are the sea anemone, feather star-fish, boche-de-mer, firefish or butterfly carp, cow-fish, spotted catshark, flyfish and other types of tropical sea creatures. \$9.95

**CORONATION OF KING GEORGE VI AND QUEEN ELIZABETH** (350-feet). A historical film record of the inspiring and spectacular coronation ceremonies. \$9.95

**CUMMINGTON STORY** (500-feet). Experiences of refugee family in a New England town, their diffidence as newcomers, and their later absorption into the life of the community. \$6.99

**DAYBREAK IN UDI** (1400-feet). The story, based on actual incidents, of an ancient African tribe, the Abaja Ibos of Nigeria, who through their own efforts, set out to build a modern maternity home. The trials attendant on a scheme of such local magnitude are vividly portrayed. The musical score is based on traditional African themes recorded on the spot. \$19.95

**DEATH RIDES THE NIGHT** (500-feet). An exciting adventure in the "Meet the Victim" series. \$7.77

**DEATH VALLEY** (300-feet). A "travelogue" film in which John P. Medbury calls, uninvited, on Al Gregor, Death Valley hermit. Under Gregor's guidance, Medbury conducts one-sided and laughable conversations with the hermit's pets, including a cinnamon bear, a squirrel, a burro, a cat and a racoon and her litter. \$9.95

**DICK WHITTINGTON'S CAT** (250-feet in color). A Fairy Tale cartoon. \$15.55

**DISTILLATION** (450-feet). The complete story of petroleum distillation. \$14.95

**DUMB LIKE A FOX** (250-feet). A Columbia cartoon. \$6.66

**DYNAMIC NEW YORK** (350-feet). A panorama of New York City. Among the sights are New York's famed harbor, the Statue of Liberty, the historic Sub-Treasury, Wall Street, the Stock Exchange, the Bowery, skyscrapers, famous streets, modes of transportation, and residential sections of the great metropolis. \$5.99

**THE EARTH** (600-feet). Using a globe of the world, the film explains the arrangement and meaning of the poles, great circles, parallels, meridians, longitude, latitude, nautical mile and departure. \$14.95

**THE ENCHANTED MILLER** (300-feet). A Fantasy cartoon. \$7.77

**ERUPTION OF VESUVIUS** (300-feet). An amazing on-the-spot movie record of Mt. Vesuvius in its first violent explosion since 1872. Photographs of the flaming crater, fiery rivers of lava consuming cities, and the exodus of a stricken people from doomed areas. \$7.95

**ESCAPE IN CANADA** (300-feet). Shows the vast Canadian wilderness areas which provide campers and sportsmen with an escape from modern civilization. \$9.95

**EVERYWHERE IN THE WORLD** (625-feet). This interesting presentation opens with President Roosevelt's speech demanding the four essential freedoms—freedom of speech, freedom of worship, freedom from want and freedom from fear—"everywhere in the world". The film portrays the fight which the United Nations made to preserve these four freedoms during World War II. \$4.99

**FARM FROLICS** (250-feet). A Puddy the Pup cartoon. \$6.66

**FIGHT FOR BETTER SCHOOLS** (800-feet). A timely subject, this March of Time film shows how interested citizens like those of Arlington County, Virginia, are able by working together to effect legislation and revitalize the public schools. Also deals with the struggles to improve educational facilities in other localities. \$9.99

**FIGHT FOR LIBERTY** (1400-feet). Opens with the graphic story of the year during World War II when Great Britain stood alone against the Axis, and pictures how the Nazi Air Force smashed at cities and how Britain fought back. Outlines the policies of Britain and of Canada and the United States, and the latter's entry into the war. Pictures Canada's important role in the ensuing months of the war; shows the air war over Europe, and has scenes of the African and Balkan campaigns. \$22.22

**FIGHTING THE FIRE BOMB** (500-feet). Pictures the mechanism and operation of the common incendiary bomb; how to extinguish the bomb and fight resulting fires. \$4.98

**FIGHT THRILLS NO. 1** (300-feet). Highlights of the fight game are seen in this film record of boxing matches between Lou Ambers and Henry Armstrong, and the "Brown Bomber", Joe Louis and Max Baer. \$9.95

**FILM COMMUNIQUE NO. 15** (750-feet). Features a confiscated Japanese film made five years prior to Pearl Harbor, showing how Japanese soldiers and officers, the brutal and fantastic targets for American soldiers, were rigidly trained at the Japanese "West Point" for their roles in obtaining world domination for Japan. Also includes "Yankee Noodle" showing ingenious work-saving inventions of American soldiers, and a tribute to the thousands of foot soldiers of the U. S. \$14.44

**FISHERMEN OF THE NORTH** (300-feet in color). A trip through Arctic waters to Labrador with Commander Donald B. McMillan. \$15.66

**FISH FRY** (250-feet). An Andy Panda cartoon. \$7.77

**FLYING FEET** (350-feet). Knute Rockne, immortal coach of Notre Dame University, gives several football pointers, including the importance of the shift and skirting the end. The film includes a sequence in study of the plays; and the film includes a sequence of the famous Red Grange on a touchdown run. \$7.77

**FOLKSONG FANTASY** (250-feet). Animated puppets and birds enact the narratives contained in three familiar folksongs, "The Riddle Song", "Who Killed Cock Robin?" and "The Cooper of Eile". \$7.95

**FOLLOW THRU** (350-feet). Experts of the green demonstrate the fundamentals of good golf. Follow slow motion sequences and close-ups of the golfing styles of such notables as Dick Metz, Jimmy Thompson and Horton Smith. \$6.66

**FOOD FOR FIGHTERS** (300-feet). Shows how the Quartermaster Corps of the United States Army processed and transported food to the armed forces during World War II. \$3.98

**FOR YEARS TO COME** (700-feet in color). Depicts the work of a farmer and his family during a year in which they changed over from the old, straight-row method to modern conservation farming methods. \$14.44

**FOUR STEPS FORWARD** (900-feet). Presents a four-point system for instructing new employees: (1) prepare the worker; (2) present the operation; (3) try out performance; and (4) follow up. Dramatizes each point. \$12.95

**THE FOX HUNT** (200-feet). A Terrytoon cartoon. \$6.66

**FRIGID FROLICS** (300-feet). A good program of winter sports. Includes shots of swimming in icy waters and techniques for rescuing persons who have fallen through ice; a demonstration of the popular Scottish game of Curling; pointers on skiing; and pictures of former Olympic champion Jaffe teaching children to ice skate. \$7.95

**FUNDO IN CHILE** (500-feet). Life on one of the great fundos or ranches of South America, including the community of hundreds of workers, their use of modern methods of farming, and the activities of the school and the church. \$9.95



FUN ON THE RUN (300-feet). Bud Abbott and Lou Costello crash a girl's basketball game, and everyone will laugh at their antics as they entertain the spectators. \$11.11  
GENE AUTRY SINGS (350-feet). A western setting is background for several well-known songs by America's favorite cowboy singer, Gene Autry. Included are "The Bluebell Fly," "When the Bloom Is on the Sage" and "A Boy From Texas and a Girl From Tennessee." \$9.99  
GENE AUTRY SINGS WESTERN SONGS (300-feet). America's favorite cowboy, Gene Autry, presents a program of well-known western songs. Included are "Mexicali Rose," "Home On the Range" and "Back In the Saddle Again." \$9.99  
GORS IN A MESS (300-feet). Bud Abbott and Lou Costello engage in side-splitting chases and merry madcaps. \$11.11  
THE GOLDEN ARROW (300-feet). A colorful and interesting trip from London, England, to Paris, France, on the luxury passenger train, the Golden Arrow. The train leaves famous Victoria Station in London, arrives at Dover where passengers board a steamer for the English Channel crossing, and complete the journey on the French Golden Arrow. \$9.99  
THE GOLDEN STATE (300-feet). Board the luxurious red and silver Golden State passenger train of the Rock Island and Southern Pacific railroads at Chicago's LaSalle Street Station for a cross-country trip to Los Angeles. \$9.99  
GOLD TOWN (350-feet). A camera trip through the town of Kalgoorlie in Western Australia, the principal gold-mining town of the continent. Bora in the gold rush of the 1890's. Kalgoorlie is famous for its "Golden Mile," one of the richest areas on earth, and there are many scenes of this fabulous place. \$9.95  
GOLF MAGIC (300-feet). Golfers who shoot from a low seventy to scores craftily concealed, will be amused and amazed at this unusual film of the sport. \$5.95  
GOVERNMENT IS YOUR BUSINESS (1000-feet). Arthur Franz stars in this dramatized story of a young man who dared everything to show that corrupt government is due more to the weakness of good people than to the strength of bad politicians. \$19.99  
GRAND CANYON (600-feet). Covers the geological and scenic highlights of the Grand Canyon including good sequences of the Havasupai Indians. \$14.44  
GRASSHOPPERS (700-feet). Shows several types of common grasshoppers' various stages in their life cycle, damage caused by them, and measures to control the pests. \$19.95  
HANSEL AND GRETEL (500-feet). The Grimm fairy tale enacted by the Salzburg Marionettes. \$19.95  
HAVANA HOLIDAY (325-feet). A tour of Havana showing the principal points of interest, among which is the old cathedral where Columbus was first buried. Charm lies in the scenes of many contrasts—the old and the new only a step apart. \$9.95  
HEALTH FARM (250-feet). A Farmer Al Falfa cartoon. \$6.66  
HEAVEN SENT (500-feet). Bosco the Cine Pup in a Cine Puppet show. \$8.88  
HERE IS CHINA (900-feet). An over-all view of the picturesque nation and its 450 million people, with Clifton Fadiman narrating the sequences. Includes the geography of China, history and customs of the land, people of China, and development and changes of China. \$12.22  
HILLBILLY BLUES (350-feet). A toe-tapping program of "good old mountain music" by Tommy Scott and his "Merry Mountaineers." \$6.99  
HONG KONG (350-feet). A camera tour of picturesque Hong Kong in beautiful Repulse Bay off the China coast. A sight-seeing trip through the busy streets of Victoria, and random scenes in other scenic and interesting localities. \$9.95  
HOT ICE (300-feet). The development of ice hockey, Canada's game, from playing "shinny" on the old school pond to the intense excitement of professional matches at Madison Square Garden. \$7.95  
HOW TO DRAW CARTOONS NO. 4 (600-feet). One of the series of "Match Stick in Action" films on how to draw cartoons, and features the steps in drawing animals. \$9.99  
HOW TO SELL QUALITY (900-feet). A film particularly geared for persons in the selling field, emphasizing methods of selling quality products in highly competitive markets without cutting prices or lowering the fine standards of the products or meet buyer demands for lower prices. Hugh Beaumont, Anne E. Fairbrother and Douglas Gregory are featured. \$22.22  
HOW TO WALTZ (450-feet). A program of melodious entertainment as the Vienna Choir Boys sing several songs of Johann Strauss, Josef Strauss and others. While the boys sing, children interpret the music with ballroom dancing. \$9.99  
HUNTING SEASON (250-feet). A Merrytoon cartoon. \$6.66  
ICELAND—LAND OF THE VIKINGS (300-feet). A study of the people in Iceland, particularly in the city of Reykjavik where one fifth of the population lives. The narration includes historical information. \$9.95  
INDUSTRIOUS FINLAND (350-feet). A pre-war picture of Finland—the lumbering industry, farming and mining. A camera tour of the principal cities of the country. \$9.99  
IN MAORI LAND (350-feet). Interesting study of the Maori people, inhabitants of Rotorua, New Zealand. Rotorua is the center of New Zealand's thermal wonderland, and there are several shots of the hot springs, as well as many pictures of the arts and crafts of the people. \$9.99  
IT HAPPENED IN IRELAND (400-feet). An entertaining show by Frank Webb's Puppet "Pixies." \$8.88  
IT MUST BE LOVE (250-feet). A Terrytoon cartoon. \$6.66  
IT'S EVERYBODY'S WAR (500-feet). Henry Fonda is narrator for this dramatization of the reaction of the people of a typical small American town to the tragedies of World War II. \$6.66  
JAIL BIRDS (250-feet). A Flip the Frog cartoon. \$6.66  
JAIL BIRDS (250-feet). A Mouse Movie cartoon. \$8.95  
KINGS OF THE ARCTIC (275-feet). Sea lions take the spotlight in this film. They are photographed as they battle for mate and home, successfully repelling all challengers—or losing all in a fight-to-the-finish. \$9.99  
KNOCKOUT THRILLS (300-feet). Fast-paced scenes from fights that have made ring history. See Carpentier-Tunney, Wills-Uzcudun, Sharkey-Dempsey and Braddock-Louis. \$7.95  
KONGOO ROO (300-feet). A Phantasy cartoon. \$6.66  
LET'S RING DOORBELLS (250-feet). A Scrappy cartoon. \$7.77  
THE LION HUNT (200-feet). A Mouse Movie cartoon. \$6.66  
LITTLE BANTAM WEIGHT (250-feet). A Rudolf Ising cartoon. \$7.77  
A LITTLE BIRD TOLD ME (200-feet). A Toddler cartoon. \$6.66  
THE LITTLE LOST SHEEP (350-feet). A Krazy Kat cartoon. \$6.66  
LITTLE SHOW NO. 531 (500-feet). A dramatic story concerning a young man who is duped out of a large amount of money by a pretty girl, and the exciting climax when an unavoidable accident finds him with "blood on his hands" and a case for the police. \$9.95  
LONE MOUNTIE (250-feet). A Krazy Kat cartoon. \$7.77  
MACASSAR (300-feet). Camera impressions of the capital of Celebes, part of the Dutch East Indies empire. \$9.99  
MAGIC WORDS (350-feet in color). The magic words, "systematic savings" are described as the key to home ownership and financial security in this film dramatization of one family's benefits from co-operative banking. \$12.22  
MAGIC VERSUS SCIENCE (400-feet). "Slight of hand" and science both accomplish equally amazing feats of magic according to the demonstrations in this interesting film. A magician performs tricks with cards, handkerchiefs and wands, and at the

same time, gives side demonstrations of the magic which can be done in the scientific field. \$7.77  
MAINTENANCE OF OFFICE MACHINES (1200-feet). Dirt, dust and carelessness are exposed as the three deadly enemies of office machines. Instructions are given for the care and cleaning of typewriters, dictating machines, adding machines and calculators. \$14.95  
MALAYA (300-feet). A pleasant picture of life of the Malaya Peninsula, including many scenes of the island of Singapore, one of the world's most important crossroads of shipping lanes. Shows the temples and sacred turtles of the country; visits a rice plantation and Malayan pygmies in their jungle homes, and shows of the strange flowers, fruits and animals of the jungle. \$9.99  
A MAN, A DOG AND A GUN (400-feet). A film on hunting, showing various types of bird dogs in action and their intelligent performance. \$7.77  
MANITOBA (400-feet). A colorful picture of Manitoba's attractions—sports facilities, scenic beauties, main cities and industries. From the United States border to northern wilderness, the camera travels across the province, dwelling on typical scenes along the way. \$9.95  
MAN'S BEST FRIEND (250-feet). A Walter Lantz cartoon. \$7.77  
MASS MOUSE MEETING (200-feet). A Krazy Kat cartoon. \$6.66  
MICKEY AND SIMON LEGREE (300-feet). A Mickey Mouse cartoon. \$11.11  
MICKEY'S TOUCHDOWN (700-feet). Mickey McGuire and the kids of "Our Gang" are seen in an entertaining comedy. \$16.66  
MODERN CZECHOSLOVAKIA (500-feet). Shows the country, people and achievements in Czechoslovakia before the Munich Pact in 1938. Indicates the great strides made under the democratic government, in public housing and health services and the high standard of living in the rural areas. \$9.99  
MOTHER GOOSE ON THE LOOSE (250-feet). A Walter Lantz cartoon. \$7.77  
MOUSE TRAPPERS (250-feet). An Andy Panda cartoon. \$7.77  
MOVIE MAGIC (525-feet). Shows how motion picture photography gives the breath of life to animated objects. \$12.22  
MURDER ON MY MIND (400-feet). An exciting mystery show starring A. F. Shipley and Sylvia Hariman. \$9.95  
NEW ENGLAND HOLIDAY (300-feet). A travelogue of the shrines and places of historical New England. Also Cape Cod vistas, lobster fishing, surf bathing, and the White Mountains in winter. \$9.95  
NEW WAYS IN FARMING (500-feet). Depicts such modern agricultural trends as large-scale factory-style farming, with crops scientifically scheduled and cultivated and the farm co-operative. Indicates how the traditionally independent farmer, with the aid of new mechanized equipment, is able to make his farm increasingly prosperous. A March of Time film. \$6.66  
NORTHEASTERN STATES (FIRST EDITION) (300-feet). Stresses the vast industrial and commercial activities of the northeastern states and describes, by means of map animation, the region's physical character and the origin and distribution of its people. \$14.95  
NO VACANCY (300-feet in color). A whimsical but scientifically accurate drama of the sea. In a shallow ocean pool, Herman, a hermit crab who has outgrown his shell, is looking for a new home. He finds one that is also wanted by Humphrey the Bully. As Herman and Humphrey battle for possession of the shell, a third hermit crab quietly carries it away. \$14.95  
NOW THE PEACE (500-feet). The story of the global plans for peace, and basic aspects of the organization and program of the United Nations Organization. The failure of the League of Nations is contrasted with the powers and plans of the U.N.O. \$4.98  
OBJECTIVE SECURITY (700-feet). The dramatic story of 300,000 Okinawans who learned about American government from the members of the Civil Affairs team that liberated them from Japanese domination. \$9.99  
OFF THE BEATEN PATH (225-feet). A potpourri of sports events including a sand-lot version of polo; shots from the national A.A.U. Gymnastic Championship meet in Chicago, and scenes from the world's roughest and fastest rodeo. \$5.95  
OH, SUSANNA (500-feet). Lively scenes of the boyhood of America's famous song writer, Stephen Foster. The King's Men sing the well-known Foster composition, "Oh, Susanna." \$9.99  
THE OLD PIONEER (250-feet). A Rudolf Ising cartoon. \$7.77  
OLYMPIC WINTER THRILLS (300-feet). Gretchen Fraser, Barbara Ann Scott, Dick Button and other stars of skiing and ice-skating are seen in an amazing demonstration of skill and technique. \$7.95  
ONE WORLD OR NONE (300-feet). A graphically vivid summary of the development of atomic energy and the atom bomb, stressing the need for world control of atomic energy. Points out that every nation is vulnerable—there is no absolute defense against atomic attack—and that nations must learn to live together peacefully or all face total destruction. \$6.66  
OPERATION IVY (925-feet in color). Documentary record of a thermonuclear test at the Atomic Energy Commission's Pacific proving grounds in 1952. Introductory remarks by President Dwight D. Eisenhower, and a closing statement by F.C.D.A. administrator, Val Peterson. \$49.95  
OUT OF THE HEART (300-feet in color). The heart-warming story of a boy and his dog is told in this color motion picture. Kindness, loyalty, patience, teamwork and other desirable character traits are often strengthened in humans by association with animals, and this is the observation that audiences will make from this picture. \$12.22  
PACK AND SADDLE (300-feet). A hunting and camping vacation in the West. \$9.99  
THE PAINTER AND THE POINTER (An Andy Panda cartoon. \$7.77  
PASSING HOURS (425-feet). A gay and humorous account of how man, having learned to master time, becomes its frenzied slave. \$9.99  
PHONY CRONIES (500-feet). A hilarious comedy starring El Brendel. \$18.88  
PIRRO AND THE SCALE (300-feet). Pirro the Puppet in a delightful explanation of weights and balances. \$5.55  
PLANNING AND LAYING OUT WORK (375-feet). Jeff Harris, plant supervisor, talks to his son, Jimmy, who has built a boat in the basement too large to go through the door, about the necessity for planning a job in advance; and recounts several illustrative experiences at the plant. \$7.95  
THE PLAYFUL FIST (250-feet). A Columbia cartoon. \$6.66  
THE PRINCESS AND THE DRAGON (300-feet). Puppets enact the familiar fairy tale. \$8.88  
PROEM (350-feet). A unique film tying together a modern picture of changing cube forms in the pictorialization of the musical score. \$6.66  
RAGAMUFFIN (375-feet). Puppet story of a small boy, his dream, and an accordion that plays beautiful music. \$9.99  
RAG DOG (225-feet). A Merrytoon cartoon. \$6.66  
READY TO SERVE (500-feet). A comedy starring Buster West. \$16.66  
REMEMBER THESE FACES (600-feet in color). The emotional impact of color is used to produce an unforgettable picture of the wounded in the great invasion of the Pacific during World War II. The camera follows the grim spectacle of wounded men from the front line to hospital ship and records the rapid transition from front-line casualties to men safe in the hands of modern medicine and with a fighting chance for recovery. \$19.95  
ROMAN CARNIVAL OVERTURE (375-feet). The complete "Roman Carnival Overture" by Hector Berlioz is presented by the Orchestra du Conservatoire de Paris with Philippe Gaubert directing. \$7.77

ON TWO WHEELS (500-feet). In a traffic court run by youngsters, cases are argued and violators of the bicycle riding code are sentenced for their negligence. In each case, the sentence sends the culprit to a competent individual who shows him how to ride safely. \$14.44  
OPERATION IVY (900-feet). Documentary record of a thermonuclear test at the Atomic Energy Commission's Pacific proving grounds in 1952. Introductory remarks by President Dwight D. Eisenhower and a closing statement by F.C.D.A. administrator Val Peterson. \$29.95  
ORIGIN AND SYNTHESIS OF PLASTIC MATERIALS (500-feet). Shows the organic origin of plastics and the resemblance to natural substances; synthesis of plastics from natural substances; differences between thermo-setting and thermo-plastic materials. \$9.99  
ORNAMENTAL SWIMMING (350-feet). Girl experts in figure and group unison swimming. Underwater views show the rhythmic patterns of the various types of swimming and a comparison of the aquatic skill of tropical fish and human swimmers. \$9.99  
PALE HORSEMAN (700-feet). A documentary record of the health problems following the wake of war when sick and exhausted people emerge from the wreckage of their civilizations, and of what has been done to prevent the spread of epidemics in liberated countries. \$5.55  
PARAGUAY (500-feet). A camera study of the people of Paraguay; their history of warfare; quebracho and mate industries; distinctive and vigorous Indian culture of the country. \$14.44  
PEACE COMES TO AMERICA (350-feet). Highlights of the end of World War II in August, 1945, with special emphasis on problems to be met—soldiers to be brought home—others to be healed—and others to be assisted with GI loans and educational aid. \$7.99  
PEAT AND COAL (300-feet). Deals with the mining and use of peat, and gives a pictorial explanation of how coal is formed. \$7.99  
PEOPLE BORN IN APRIL (225-feet). One of the "Movie Horoscope Series" in which Zanaïmar, India's foremost astrologist, gives an astronomical study of people born in the month of April. \$6.65  
PEOPLE OF THE PONDS (375-feet). A journey into the crater of an extinct volcano and the weird and bizarre forms of microscopic life which live in a pool at the bottom of the crater. \$9.99  
THE PEOPLE'S BANK (500-feet). The story of the organization and operation of credit unions. \$6.66  
PEOPLES OF CANADA (500-feet). Canada, like the United States, has been settled by people of every race, from every corner of the earth. They all blend into the picture of a North American civilization; yet each group has its own individual contribution to make to the life of a new land. \$8.88  
PERIODIC CHECK-UP (500-feet). An Office of Education Film which deals with the automobile—tuning up the engine; servicing the brake system—inspecting the steering system, chassis and body. \$6.99  
PERMANENT AGRICULTURE (1100-feet). A detailed, informative and interesting study of why soil conservation is necessary to continued rural and urban prosperity. \$12.22  
PERSONAL HYGIENE (300-feet). A film made particularly for enlisted men of the United States Army dealing largely with good hygiene habits. \$19.99  
PERU (500-feet). Modern social and economic life of Peru; attempts to meet current problems of health, poverty, race relationships, and national economic conditions; views of jungle and vestiges of Inca culture. \$12.22  
PETROLEUM AND ITS PRODUCTS (400-feet). Opening scenes suggest how petroleum may have been formed in past geological ages. The drilling of oil wells is then shown, as well as pumping and storage in temporary reservoirs. Animation shows how petroleum may be separated into various fractions by means of a "batch" still, and the possibility of obtaining additional gasoline through cracking processes. \$7.99  
PINEHURST (300-feet). Pinehurst, home of many golf tournaments, is the setting for this excellent sporting film. Features the progress of a tournament plus special demonstrations of various shots by many outstanding golfers. \$5.99  
PLAIN INDEXING AND CUTTING A SPUR GEAR (600-feet). Explains the principle and operation of the dividing head. Its application is shown in the cutting of an eight-pitch gear with thirty-six teeth. \$5.99  
PLAN FOR LIVING (400-feet). A study of Australia's long range planning for modernization of Sydney and other leading cities which are over-populated and congested with traffic. \$6.99  
PLAY TIME (275-feet). Boys and girls of scenic Great Britain are shown as they enjoy play time recreations in the natural surroundings of the country in which they live. \$4.99  
PORCELAIN PROTECTED SURFACE WIRING (725-feet). How to make an electrical entrance to a building; the need for providing fuse protection in circuit; how to install wiring and porcelain fittings; how to support and insulate wires to meet requirements of the National Electrical Code. \$9.99  
PORTRAIT OF A LADY (250-feet). Andrew Loomis, noted artist, is shown at work on a painting from the rough sketch to the completed portrait. Narration points out the techniques of using colors to produce the desired effects in paintings. \$6.66  
PREFACE TO A LIFE (1000-feet). Sponsored by the National Institute of Mental Health, portrays conflict between a mother's and father's ideals and wishes for their child and the turmoil this causes in the child, harming his chances of growing up to be a well-adjusted individual. \$15.55  
PRESIDENTS OF THE UNITED STATES. McKinley THROUGH F.D.R. (300-feet). The review of significant events during the term of office of American presidents from William McKinley to Franklin Delano Roosevelt. \$9.99  
PROGRESS REPORT (350-feet). A British Information film which shows how rubble from razed buildings in war-torn Britain is used to make playgrounds; the various steps in processing magnesite from the sea; and workers and factories of the pottery industry in a move from the city to ideal work buildings and homes in the country. \$4.99  
RACING RAMPAGE (400-feet). If unusual competitive sports are your "cup of tea," you'll find a thrill a second in this action-packed film. Included are shots of a fifteen-mile roller skating road race in Rome; a unique "medley" type of cross-country relay in Moscow; a lumberjack log-rolling and chopping contest in Australia; horse racing in the main streets of an Italian town; midget car races for youngsters in Denver; as well as several other unique matches. \$9.99  
THE RADIO OPERATOR (500-feet). Stresses the importance of the training of Air Force radiomen, and pictures how the training equips personnel for responsibilities of active duty on bombardment aircraft. \$6.99  
RAISING SOILERS (350-feet). Young men of Great Britain are shown in the various processes and training procedures through which they must go to become members of the Royal Navy. \$4.99  
READY TO SERVE (700-feet). A hilarious comedy starring Buster West. \$16.66  
RE-CREATION (1200-feet). This film shows the beautiful scenery found in the national parks of the nation, proclaiming them as "paradise" for campers in the story of an irritable family which finds peace and relaxation in the out-of-doors. \$22.22  
RECREATIONAL AND OCCUPATIONAL THERAPY (400-feet). Shows recreational and occupational activities fitted to the patients' condition; individualized occupational therapy as supervised by nurse, group occupational work in hospital and community; and social recreation projects. \$6.99  
RED BARBER INTERVIEWS A TENNIS PLAYER (400-feet). One of the popular quarter-hour television shows with sports-caster, Red Barber, in an interview with the outstanding tennis champion, Billy Talbert. The guest was captain of the Davis Cup team which brought the Davis Cup back to the United States several years ago, and is tennis editor of the magazine, "Sports Illustrated." \$9.99

RED BARBER INTERVIEWS A BASEBALL PLAYER (400-feet). Whitey Ford, great left-handed pitcher for the New York Yankees, is interviewed by Red Barber on one of the sports commentator's fifteen-minute television shows. \$9.99  
RED BARBER INTERVIEWS A FOOTBALL PLAYER (400-feet). Jim Crowley, sports commentator, and one of the University of Notre Dame's famous "Four Horsemen", appears as guest interviewer on the quarter-hour TV show, Red Barber's Corner, to chat informally with Jordan Oliver, football coach at Yale University. \$9.99  
ROAD TO HANGTOWN (350-feet). This is the story of a road in the Sierra Nevada and of the men who traveled over it in search of gold in '49. \$9.99  
ROUGH FACING, TURNING AND DRILLING ON A VERTICAL TURRET LATHE (1000-feet). How to center and chuck an aluminum engine casting on the table of the vertical turret lathe; and tool up the vertical head and side head for the machining operations. \$9.99  
RUN FOR YOUR MONEY (500-feet). There's excitement and adventure in this play from the "Meet the Victim" series starring Carl Elliott, Louise Ryan, Ed Finnegan, Mark Koven and John Peters. \$8.88  
SAFE DAY (300-feet). Deals with safety measures for plants and factories, and through the story of Bill Jones, a workman with an excellent safety record, at home, in traffic and in the factory. The film shows that a good record is based not on luck, but on constant vigilance. \$7.99  
SALES IN THE WIND (325-feet). A film story of the centuries' old science of sailing, with interesting illustrations of fundamentals of wind and design of sails. How sails are fashioned after the wings of birds, is amply demonstrated in animation. \$6.66  
SCREEN PICTORIAL (300-feet). Adventure is the main theme in this film. There's a trip down "the river of no return", the treacherous Salmon River in Idaho; mountain climbers tackling the peaks of Yosemite; a western rodeo, and a re-enactment of the landing of the U. S. Marines at Monterey Beach July 7, 1846, when American took possession of the California. \$8.88  
SALT OF THE EARTH (350-feet). Depicts life and activities on the farm, its hardships and compensations, and the importance of the farm and the farmer to civilization. \$7.99  
SAND AND FLAME (750-feet). Shows how sand is transformed into glass of different shapes and kinds. Deals with the development of glass making and the specialized art of the early glass blower, and concentrates on the manufacture of glass articles in common use today. \$12.22  
SAO PAULO (600-feet). An interesting study of progress in Brazil's second largest city, one of the fastest growing cities in the world. Here is a cross-section of modern South America with its busy industry, its growing commerce, its beauty of art and architecture, and its up-to-date trends in education. \$12.22  
SAVE THE SOIL (350-feet). Shows various ways of conserving soil fertility, including terracing, cover-cropping, crop rotation, and the use of fertilizers. \$8.88  
SCREEN ACTORS (350-feet). Presents screen actors as individuals—as property owners, as tax payers, and as citizens of the picture-making community. Hollywood. \$9.99  
THE SEA (375-feet). Underwater photographs of many marine forms rarely seen by students. Descriptive commentary gives information about underwater sea life, including marine worms, crabs, sea urchins, hermit crabs, eels, barnacles and the octopus, and tells of the battle for survival being constantly waged. \$9.99  
SECOND CHANCE (925-feet). A romantic drama starring David Niven. \$19.99  
SEEING GREEN (350-feet). A description of the value of traffic lights in making streets and highways safe for motorists and pedestrians. Construction details and the method of operation are pictured. \$8.88  
SEMI-AUTOMATIC AND HAND MOLDING OF INTRICATE PARTS (475-feet). Shows how to mold plastics in complicated shapes. \$9.99  
THE SHAPER (600-feet). Functions, characteristics, and basic operations of the shaper. \$5.99  
SHEEP SHEARING (500-feet). How to handle sheep for shearing; shear the sheep and roll and tie the fleeces. \$8.88  
SILENT WAR (300-feet). The story of the war against yellow fever being waged by scientists in the jungles of Colombia. Shows how vaccine is made, dried, frozen and transported by mule, and how the research is making United Nations jungle fighters immune to the dread disease. \$7.77  
SINGAPORE (300-feet). A film visit to the "Cross Roads of the East". Gives a review of the city's history, and a panoramic tour of the streets, interesting buildings and residential sections. \$9.99  
SITTING RIGHT (300-feet). The technique of sitting correctly—how to sit down and how to get up. Leg, arm and hand positions are shown. \$9.99  
THE "64" DOLLAR ANSWER (325-feet in color). The International Harvester Company shows its "64" dollar answer—the Thresher No. 64. Shows the entire machine by diagram and shows how it functions. \$8.88  
SKI REVELS (325-feet). Ski experts show "how it should be done" in outstanding performances on snow-covered mountain slopes. \$8.88  
SKI THRILLS (350-feet). Depicts the exhilarating movements, charms and rhythm of this popular and healthful sport midst the High Sierras. \$8.88  
SNOW FALLS (400-feet). This is a film on skiing that will provide laughs for the novice at the sport as well as hardened experts who have acquired their skill only after all the bruises and sprains disappeared. \$7.77  
SNOW THRILLS (325-feet). A fast-moving film of winter sports. See tobogganing at 60 miles an hour—ice yachts tilting dangerously—ski-joring and aquaplanists pulled on snow by horse and auto. Also mushing, skating and skiing. \$7.77  
SOCK (300-feet). Entertaining boxing and wrestling varieties. \$7.77  
SOIL AND WATER CONSERVATION (300-feet). Conservation farming methods to protect soil and water resources: contouring, terracing, strip cropping, cover cropping, rotation, tree and grass planting. \$4.99  
SOME CHARACTERISTICS OF GASES (300-feet). Gases as exemplified in the atmosphere; how we live under constant operation of physical laws. \$9.99  
SOURCES OF ELECTRICITY (300-feet). Production of electric phenomena by magnetic induction, friction or chemical action; nature of electrical currents. \$9.99  
SOUTHEASTERN STATES (300-feet). Presents an over-all study of the southeastern states region—its people, its agriculture, industry, heritage, and its interdependence with other regions. \$9.99  
SOUTHWESTERN STATES (325-feet). Emphasizes the vastness of the southwest's resources and the implications of its recent industrial and commercial progress. \$9.99  
SPORTING WINGS (300-feet). Aviation as a pastime is the subject for this interesting film. With a converted barn as a hangar and a pasture as a landing field, air enthusiasts make the world smaller as they swim in distant waters and picnic on far off beaches. \$7.77  
SPORTS WE SEIDOM SEE NO. 32 (250-feet). Several really unique sports attractions feature this film! There are shots of automobile racing up and down a flight of steps in the streets of Prague, Czechoslovakia; bull fighting in the streets of a city in southern France; a really... \$7.77  
SPOT NEWS (300-feet). The picture opens with a direct recording sequence of dialogue and scenes as a wire photo crew goes out to photograph an airplane taking off from the top of a speeding automobile, and then transmits the photograph back to the newspaper office over a telephone wire. Shows how the current is received back at the newspaper and changed back to light values and printed as a picture. \$9.99



Excellent used 16mm. sound prints . . . .

## GOING PLACES with UNCLE GEORGE

Length each, 300 to 350-feet  
MANY TITLES AT REDUCED PRICES!

### ANIMALS AT HOME (pp. 14c, \$9.99)

"Home, sweet home" for animals of the jungles, forests, fields and water—lions are seen in their natural jungle habitat—rabbits in the open fields where they are most often found—skunks, possums, porcupines and other animals are photographed in the woods where they live—and there are many other shots of animals and their "home grounds".

### AT THE ZOO (pp. 14c, \$8.88)

A tour of a modern zoo, where many of the animals, including elephants, lions, hippos, zebras, giraffes and many other beasts are shown in action in their natural habitats.

### CAVORTING MONKEYS (pp. 14c, \$9.99)

Monkeys, chimpanzees and baboons take the spotlight in this film and provide amusing entertainment as they are pictured performing tricks they have been taught, or, are photographed candidly in the zoos where they are kept.

### CUBA, VENEZUELA, CURACAO

(pp. 14c, \$9.99)

A jaunt to the West Indies for a visit to scenic and historic spots in Cuba and Venezuela, and the unusual Dutch island of Curacao, one-third of which is covered with oil refineries.

### DANCING AFRICANS (pp. 14c, \$9.99)

Native drums and crude musical instruments provide background for several of the traditional ceremonial dances of the people of the "dark continent". There is also a brief camera visit to one of Africa's largest modern cities, and in contrast, shots of one of the country's native villages.

### FARM ANIMALS (pp. 14c, \$6.66)

Almost as much fun as actually spending a day in the country is this film visit to a typical American farm. City folks, who, unlike their "country cousins" are unfamiliar with close-ups of many farm animals, will enjoy the excellent shots of cows and calves, turkeys, pigs, ducks, horses, goats, rabbits, chickens and farmyard pets.

### FRUIT OF KINGS (pp. 14c, \$6.66)

Pineapple is the "star" of this film visit to the Hawaiian Islands where ninety per cent of the world's pineapple is grown. Uncle George, with the camera's pictorial help, explains the many steps in processing the fruit, from the time it is harvested until it is ready for shipment all over the world, with special attention to the processing in the canneries of the "Paradise Island".

### GHOSTS OF THE GOLDEN WEST

(pp. 14c, \$8.88)

An unusually interesting camera visit to two ghost towns of the "Golden West"—Columbia and Rhyolite in the California desert. Film also includes close-ups of scorpions, spiders, kangaroo squirrels and other desert animals and insects which inhabit the former booming towns, and fight, struggle and kill much as did the former residents of the ghost towns.

### HOBBIES (pp. 14c, \$8.88)

Several interesting hobbies—all centered about miniatures and scale model replicas—are seen in this film. Included are an elaborate model railroad; miniature musical instruments and clocks; racing of miniature automobiles; scale models of every type of wagon and coach known in American history, and model ships.

### HOT RODS (pp. 14c, \$8.88)

In tune with the popularity of "hot rods" among members of the younger generation, this film is devoted to the amateur mechanics who take ancient dilapidated jalopies—"sou' em up" and turn out sleek "speed wagons". Film is highlighted by hot rod races on the California desert.

Blackhawk's Latest Acquisitions in  
Good Used

## 16mm. Silent Films

Allow 14c postage for each film of 400-feet or less,  
24c for each longer film.

ALICE IN WONDERLAND (250-feet) with Joan Bennett	\$ 4.98
AMERICA'S GRANARY (400-feet). The story of the wheat farmer	\$ 4.98
AMERICA'S HIGH SPOTS (300-feet)	\$ 4.98
ARCTIC THRILLS (250-feet)	\$ 4.98
AT THE BAT (250-feet). Kiko Cartoon	\$ 4.98
BANFF AND LAKE LOUISE (350-feet)	\$ 4.98
BIT AND BRIDLE (300-feet)	\$ 4.98
BOBBY'S DREAM (350-feet). Toy animals come to life	\$ 4.98
BOY MEETS DOG (300-feet). Walter Lantz Cartoon	\$ 4.98
BOYS TO BOARD (700-feet). Hal Roach "Our Gang" Comedy	\$14.98
BUDDY TO THE RESCUE (700-feet). Adventure film about the American Revolution	\$ 9.98
CALIFORNIA PICTURE BOOK (350-feet)	\$ 4.98
CARLSBAD CAVERNS (300-feet)	\$ 4.98
THE CHEMISTRY OF COMBUSTION (350-feet)	\$ 4.98
CHILE (350-feet)	\$ 4.98
THE CHIMP'S ADVENTURE (300-feet)	\$ 4.98
CHINOOK'S CHILDREN (300-feet)	\$ 4.98
CHRISTMAS TOPSHOP (350-feet)	\$ 4.98
THE COBBLER (700-feet). Hal Roach "Our Gang" Comedy	\$14.98
CORONATION OF POPE PIUS XII (350-feet)	\$ 5.98
CRADLE ROBBERS (650-feet). Hal Roach "Our Gang" Comedy	\$14.98
DENMARK (400-feet)	\$ 4.98
FATHER NILE, THE STORY OF EGYPT (600-feet)	\$ 9.98
THE FIREMAN (200-feet). Donald Duck Cartoon	\$ 5.98
FIDDLESTICKS (200-feet). Flip the Frog Cartoon	\$ 3.98
GATEWAY TO THE ORIENT (100-feet)	\$ 4.98
THE GEORGETOWN LOOP (225-feet). Old time railroad movie	\$ 8.88
THE GOOD SAMARITAN (250-feet)	\$ 5.98
HAWAII (300-feet)	\$ 4.98

### PUSS IN BOOTS (pp. 14c, \$6.66)

Fascinating puppets enact the familiar Grimm fairy tale of "Puss In Boots", as Uncle George tells the entertaining story of "the master cat".

### SPORTS (pp. 14c, \$6.66)

"Front row seats" with Uncle George for several unusual and exciting sporting events. See wild west bronco busting—scenes of a unique ball game, Mexican variety, and speed boat racing

### SCHOOL FOR TOREADORS

(pp. 14c, \$9.99)

A camera visit south of the border to watch the favorite sport of our Mexican neighbors, bullfighting—and to see how even very young Mexican boys are trained to become toreadors. There is a trip to a ranch where bulls are bred especially for action in the arena, and many pictures of the would-be toreadors learning techniques of the national sport.

### STORY OF BANANAS (pp. 14c, \$6.66)

Bananas take the leading role in this film story of how the fruit comes to a fruit bowl in an American home from banana plantations in the West Indies, Central America and the northern part of South America. Shows all steps in cultivating bananas from selection of location with good soil—planting—cutting—and transporting the fruit from the plantation to the seaport for loading on refrigerated ships.

### STORY OF SALT (pp. 14c, \$7.77)

A visit to the lower edge of San Francisco Bay to see one of the many ways in which one of the world's most important natural commodities, salt, is processed. Interesting pictures and narration on how salt is extracted from ocean water, purified, dried and processed for its many uses.

### SUN VALLEY SKIING (pp. 14c, \$7.77)

A sojourn in Sun Valley, Idaho, mecca for ski enthusiasts. Film features a visit to a ski school where novices are taught skiing techniques and basic fundamentals of the sport in a ten-day period.

### TIME (pp. 14c, \$8.88)

An interesting account of the history of watch making, with detailed photographs of the fabulous and unusual handmade time pieces which were made hundreds of years ago for kings and queens.

### VENICE—CITY OF THE DOGES

(pp. 14c, \$9.99)

An armchair journey to Venice, "City of the Doges", with 177 canals and more than 400 bridges. Pictures the setting of the romantic city—history, works of art and the magnificent cathedrals.

### VIVA MEXICO (pp. 14c, \$9.99)

A film journey below the Rio Grande to see how our southern neighbors in Mexico live and play. Picturesque shots of the market places where the country's rich harvest of fruits and vegetables is displayed—and also many scenes of Mexicans at work on the handicraft articles for which they are famous.

### ROSS ALLEN'S REPTILE INSTITUTE

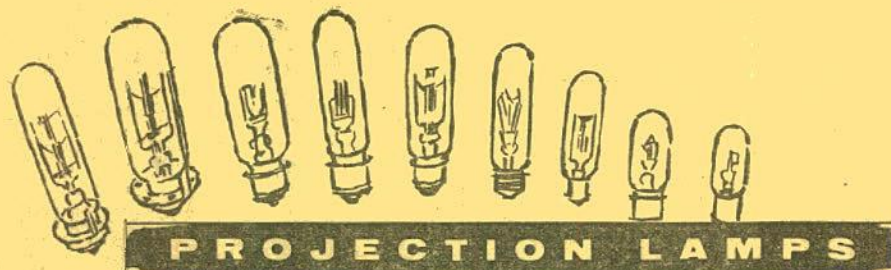
(pp. 14c, \$8.88)

Features two unusual occupations—teaching various species of birds to perform many stunts—and alligator hunting. Interesting sequences of the capture of largeigators by Ross Allen, head of the Allen Reptile Institute in Florida.

### WILD WINGS (pp. 14c, \$7.77)

A camera visit to an island in the Pacific ocean where thousands of birds of many species come to nest and to live. The camera captures many interesting and unusual shots of the extraordinary habits, characteristics and appearances of many of the birds.

THE HEADLESS HORSEMAN (250-feet). Fairy Tale Cartoon	\$ 4.98
HERITAGE OF INDIA (250-feet)	\$ 4.98
HIGH SIERRA TRAIL RIDE (200-feet)	\$ 4.98
HOLIDAY IN HOLLAND (300-feet)	\$ 4.98
HOLLAND (300-feet)	\$ 4.98
THE INVISIBLE WOMAN (300-feet) with John Barrymore and Virginia Bruce	\$ 4.98
LITTLE BLACK SAMBO (250-feet). Fairy Tale Cartoon	\$ 4.98
A MAN, A DOG AND A GUN (300-feet). Hunting	\$ 4.98
MEXICO (300-feet)	\$ 4.98
MICE IN COUNCIL (250-feet). Terrytoon	\$ 4.98
THE MILKMAN (250-feet). Flip the Frog Cartoon	\$ 4.98
NAPOLEON IN 1814 (300-feet)	\$ 4.98
NEW YORK, THE WONDER CITY (350-feet)	\$ 4.98
OKOMA SAN, THE LIFE OF A GEISHA GIRL (300-feet)	\$ 8.98
PENANG (350-feet)	\$ 4.98
RED HOT RHYTHM (250-feet). Kiko the Kangaroo Cartoon	\$ 4.98
RIDING THE CREST (250-feet). Sportbeam	\$ 4.98
ROME (300-feet)	\$ 4.98
THE SAGA OF WILLIAM S. HART (1500-feet). Blackhawk production showing highlights of Wm. S. Hart features from 1914 to 1923	\$39.98
SATURDAY MORNING (700-feet). Hal Roach "Our Gang" Comedy	\$14.98
SHANGHAI (350-feet)	\$ 4.98
SINGAPORE (350-feet)	\$ 4.98
SNOW FALLS (400-feet). Winter sports	\$ 4.98
SPORTING WINGS (300-feet). Hunting	\$ 4.98
SPORTS AROUND THE WORLD (300-feet)	\$ 3.98
THE STORY BOOK REVIEW OF MOTHER GOOSE (350-feet)	\$ 4.98
THE STRAY LAMB (350-feet)	\$ 4.98
SWEDEN (350-feet)	\$ 4.98
SWISS ON WHITE (350-feet). Winter sports at St. Moritz	\$ 5.98
SWITZERLAND (250-feet)	\$ 4.98
THREE LITTLE BRUINS GO CAMPING (300-feet)	\$ 4.98
THREE LITTLE BRUINS IN THE WOODS (300-feet)	\$ 4.98
WASHINGTON (300-feet)	\$ 4.98
WILD WEST DAZE (300-feet). Terrytoon	\$ 4.98
THE WINDWARD WAY (300-feet). Sailing	\$ 4.98
WINTER SPORTS (300-feet)	\$ 4.98
ZOO'S WHO (300-feet)	\$ 4.98



## PROJECTION LAMPS

Here is a still wider range of lamps than ever before offered by Blackhawk—lamps for 16mm. and 8mm. projectors, slide projectors, opaque and overhead projectors, filmstrip projectors and viewers. These are grouped in three general classifications. The first are the conventional lamps for movie and still projectors such as have been on the market for a period of years, but now identified by their new ASA symbols. All of the lamps in this group are of Westinghouse manufacture—fresh stock—and now manufactured to operate on 115-120 volt current. The second group, where ASA symbols are not given, are Blackhawk imports from Japan, the Votar line imported from Japan, and government surplus of standard American manufacture. These are all lamps of the conventional type that have been on the market for a period of years. The third group are the new 4-pin and focus-lok type lamps, many with the built-in reflectors, with which many of the new projectors are now being fitted. These operate on standard 115-120 volt current in the projectors designed to use them—but many of the lamps are odd-low voltage ratings, and the projectors carry built-in transformers to compensate for this voltage change.

ADD 12c POSTAGE FOR ONE LAMP, 23c POSTAGE FOR TWO;  
4c FOR EACH ADDITIONAL LAMP OVER TWO

### WESTINGHOUSE LAMPS—FRESH STOCK

This group is made up of the conventional range of lamps that have been in use for a period of years, now identified by their new ASA symbols.

Item No.	ASA Symbol	Description	List Each	Blackhawk's Price
42-01	BMD	100-watt, S-11, S. C.	\$1.00	1-79c/3-\$1.98
42-02	CEW	150-watt, T-8/71, S. C.	\$2.30	1-\$1.79/3-\$4.98
42-03	CFK	150-watt, T-8/79, D. C.	\$2.05	1-\$1.59/3-\$4.49
42-04	CLS	300-watt, T-8½/11, S. C. B.	\$3.30	1-\$2.49/3-\$7.19
42-05	CMB	300-watt, T-8½/17, D. C. B.	\$3.15	1-\$2.49/3-\$6.98
42-06	CXK	300-watt, T-10, M. P. F.	\$4.60	1-\$3.49/3-\$9.98
42-08	CZX	500-watt, T-10, M. P. F.	\$4.95	1-\$3.79/3-\$10.29
42-10	DMX	500-watt, T-20, M. P. F.	\$5.35	1-\$3.98/3-\$11.49
42-11	DDB	750-watt, T-12, M. P. F.	\$4.95	1-\$3.79/3-\$10.29
42-13	DEJ	750-watt, T-12, 3-L. R.	\$5.95	1-\$4.49/3-\$12.98
42-15	DFD	1000-watt, T-12, M. P. F.	\$5.75	1-\$4.49/3-\$12.79
42-17	DRS	1000-watt, T-20, M. P. F.	\$6.75	1-\$5.29/3-\$14.98
42-18	DFK	1000-watt, T-12, 3-L. R.	\$6.55	1-\$5.19/3-\$14.79

### BLACKHAWK AND VOTAR JAPANESE IMPORTS—GOVERNMENT SURPLUS OF STANDARD AMERICAN MAKES

This group is made up of the conventional range of lamps that have been in use for a period of years, but do not carry the new ASA symbols.

42-34		300-watt, 120-volt, T-8½, S.C.B. Blackhawk		1-\$1.49/3-\$3.99
42-19		500-watt, 115-volt, T-10, M.P.F. Votar		1-\$2.29/3-\$5.99
42-35		500-watt, 120-volt, T-10, M.P.F. Blackhawk		1-\$2.29/3-\$5.99
42-20		300-watt, 115-volt, T-8½, S.C.B. Votar		1-\$1.49/3-\$3.99
42-21		300-watt, 120-volt, T-10, M.P.F., General Electric		1-\$1.99/3-\$5.69
42-23		750-watt, 115-volt, T-12, 3-L. R., Radiant		1-\$3.29/3-\$9.49
42-27		1000-watt, 115-volt, T-12, M.P.F., Radiant		1-\$2.88/3-\$8.49
42-28		1200-watt, 120-volt, T-12, M.P.F., Westinghouse		1-\$5.95/3-\$16.99
42-29		30-watt, 120-volt, S-11, S.C.B. for Mansfield Viewers		1-75c
42-14		Bell & Howell Lamp Adapters, convert regular M.P.F. lamps to B. & H. ring base, reusable		1-\$1.49

### WESTINGHOUSE NEW 4-PIN AND FOCUS-LOK LAMPS

These are the new type lamps, many that operate off low-voltage from transformer built into the projector, many with built-in reflectors. All are of Westinghouse manufacture—all are fresh stock!

42-41	CWD	300-watt, T-10, 4-pin	\$3.75	1-\$2.89/3-\$8.29
42-42	CAL	300-watt, T-10, 4-pin, with reflector	\$3.65	1-\$2.79/3-\$7.98
42-32	DGA	300-watt, T-10, 4-pin	\$4.05	1-\$2.98/3-\$8.49
42-43	CRA	300-watt, T-10, 4-pin, with reflector	\$4.30	1-\$3.29/3-\$9.29
42-44	BEH	150-watt, T-10, 4-pin	\$2.20	1-\$1.69/3-\$4.79
42-45	DBJ	500-watt, T-12, focus-lok	\$5.50	1-\$4.29/3-\$12.29
42-46	DFR	500-watt, T-12, focus-lok with reflector	\$5.50	1-\$4.29/3-\$12.29
42-47	CZA	500-watt, T-10, 4-pin, with reflector	\$4.95	1-\$3.79/3-\$10.29
42-48	CZB	500-watt, T-10, 4-pin, with reflector	\$4.95	1-\$3.79/3-\$10.29
42-33	DAK	500-watt, T-10, 4-pin	\$4.70	1-\$3.69/3-\$9.98
42-49	CAR	150-watt, T-10, 4-pin, with reflector	\$2.50	1-\$1.98/3-\$5.49
42-50	DFA	150-watt, T-12, 4-pin, with reflector	\$5.25	1-\$3.98/3-\$11.49
42-51	DCA	150-watt, T-12, 4-pin, with reflector	\$5.25	1-\$3.98/3-\$11.49
42-52	DLG	150-watt, T-14, 4-pin, with reflector	\$6.10	1-\$4.79/3-\$13.98
42-53	DEP	750-watt, T-12, 4-pin	\$5.35	1-\$3.98/3-\$11.49



## RECORDING TAPE

All of the following brands of magnetic recording tape are on 7-inch diameter reels except for 48-17 which is on 5-inch reels. Allow 23c postage for first reel of tape, 4c for each additional reel.

48-02	Scotch Brand 111 Acetate	1200-ft.	\$2.39 each
48-01	Blackhawk 7-11A Acetate	1200-ft.	\$1.69 each
48-17	Blackhawk 7-11A Acetate (5")	600-ft.	\$ .99 each
48-03	Scotch Brand 190 Extra Play Acetate	1800-ft.	\$3.49 each
48-04	Hideltape Long Playing Acetate	1800-ft.	\$2.29 each
48-05	Hideltape Long Playing Mylar	1800-ft.	\$2.79 each
48-12	Hideltape Double Play Mylar	2400-ft.	\$3.98 each
48-18	Hideltape Mylar	1200-ft.	\$1.99 each







# Big August-September Clearance Sale!



BULK RATE  
 U. S. POSTAGE  
**PAID**  
 Davenport, Iowa  
 Permit No. 344

## 16mm. SOUND BLACKHAWK MOVIES

### LAUREL & HARDY FEATURES AND COMEDIES

Sorry, but we can ship Laurel & Hardy Comedies only to points in Continental United States, Alaska and Hawaii.

<b>BLACKHEADS</b> (2000-feet), pp. 44c, reg. \$89.95, on sale at.....	\$77.77
<b>FIXER UPPERS</b> (800-feet), pp. 19c, reg. \$27.95, on sale at.....	\$24.44
<b>GOING BYE BYE</b> (700-feet), pp. 19c, reg. \$27.95, on sale at.....	\$24.44
<b>THE LIVE GHOST</b> (800-feet), pp. 19c, reg. \$27.95, on sale at.....	\$24.44
<b>THE MUSIC BOX</b> (1000-feet), pp. 29c, reg. \$39.95, on sale at.....	\$35.55
<b>NIGHT OWLS</b> (800-feet), pp. 19c, reg. \$27.95, on sale at.....	\$24.44
<b>OLIVER THE EIGHTH</b> (1000-feet), pp. 29c, reg. \$39.95, on sale at.....	\$35.55
<b>OUR WIFE</b> (800-feet), pp. 19c, reg. \$27.95, on sale at.....	\$24.44
<b>SAPS AT SEA</b> (2100-feet), pp. 44c, reg. \$89.95, on sale at.....	\$77.77
<b>SCRAM</b> (800-feet), pp. 19c, reg. \$27.95, on sale at.....	\$24.44
<b>THEM THAR HILLS</b> (700-feet), pp. 19c, reg. \$27.95, on sale at.....	\$24.44
<b>THICKER THAN WATER</b> (700-feet), pp. 19c, reg. \$27.95, on sale at.....	\$24.44
<b>TIT FOR TAT</b> (700-feet), pp. 19c, reg. \$27.95, on sale at.....	\$24.44
<b>TOWED IN A HOLE</b> (800-feet), pp. 19c, reg. \$27.95, on sale at.....	\$24.44
<b>WAY OUT WEST</b> (2400-feet), pp. 44c, reg. \$89.95, on sale at.....	\$77.77

### NOTICE OF PRICE INCREASE

The Laurel & Hardy 16mm. sound comedies that have been regularly priced at \$27.95 per print will advance to \$29.98 per print at the close of this sale. Sale price per print of \$24.44 means that you will save \$5.54 per print over the new regular price.

### RAILROAD MOVIES

<b>THE CALIFORNIA ZEPHYR</b> (300-feet), pp. 14c, reg. \$14.98, on sale at.....	\$13.33
<b>THE GREAT TRAIN ROBBERY</b> (300-feet), pp. 14c, reg. \$14.98, on sale at.....	\$13.33
<b>THE SUPER CHIEF</b> (300-feet), pp. 14c, reg. \$14.98, on sale at.....	\$13.33
<b>WESTERN PACIFIC FAST FREIGHT</b> (300-feet), pp. 14c, reg. \$14.98, on sale at.....	\$13.33
<b>WHEELS A-ROLLING</b> (1100-feet), pp. 29c, reg. \$39.98, on sale at.....	\$36.66

### HYMNALOGUES and SONGBOOKS OF THE SCREEN

Length each, about 100-feet, pp. 6c per print, reg. \$3.98, on sale at, each..... **\$3.33**  
 Any four prints, pp. 14c, sale priced at..... **\$12.98**

<b>ABIDE WITH ME</b>	
<b>ALL HAIL THE POWER OF JESUS NAME</b>	
<b>THE ANGELUS</b>	
<b>AVE MARIA</b>	
<b>BEULAH LAND</b>	
<b>BLESSED ASSURANCE</b>	
<b>BEST BE THE TIE</b>	
<b>CHURCH IN THE WILDOOD</b>	
<b>GOD BE WITH YOU TILL WE MEET AGAIN</b>	
<b>HE LEADETH ME</b>	
<b>HOW FIRM A FOUNDATION</b>	
<b>I LOVE TO TELL THE STORY</b>	
<b>I NEED THEE EVERY HOUR</b>	
<b>IN THE GARDEN</b>	
<b>JESUS, LOVER OF MY SOUL</b>	
<b>JESUS, SAVIOUR, PILOT ME</b>	
<b>JUST AS I AM</b>	
<b>LEANING ON THY EVERLASTING ARMS</b>	
<b>THE LORD IS MY SHEPHERD</b>	
<b>LOVE DIVINE</b>	
<b>MY FAITH LOOKS UP TO THEE</b>	
<b>NEAR THE CROSS</b>	
<b>NEARER MY GOD TO THEE</b>	
<b>OH COME ALL YE FAITHFUL</b>	
<b>ONWARD CHRISTIAN SOLDIERS</b>	
<b>ROCK OF AGES</b>	
<b>SHALL WE GATHER AT THE RIVER</b>	
<b>SOFTLY AND TENDERLY</b>	
<b>SWEET BYE AND BYE</b>	
<b>SWEET HOUR OF PRAYER</b>	
<b>TELL ME THE OLD, OLD STORY</b>	
<b>WHAT A FRIEND</b>	
<b>WORK FOR THE NIGHT IS COMING</b>	
<b>YIELD NOT TO TEMPTATION</b>	
<b>AMERICA</b>	
<b>HOME ON THE RANGE</b>	
<b>HOME, SWEET, HOME</b>	
<b>JINGLE BELLS</b>	
<b>OLD BLACK JOE</b>	
<b>PERFECT DAY (THE END OF A PERFECT DAY)</b>	

### COLLECTORS' FILMS

<b>BATHING GIRLS—THEN AND NOW</b> (300-feet), pp. 14c, reg. \$14.98, on sale at.....	\$13.33
<b>DAYS OF MCKINLEY, BRYAN AND TEDDY</b> (300-feet), pp. 14c, reg. \$14.98, on sale at.....	\$13.33
<b>ROOSEVELT</b> (300-feet), pp. 14c, reg. \$14.98, on sale at.....	\$13.33
<b>SUPERLINER UNITED STATES</b> (700-feet), pp. 24c, reg. \$24.98, on sale at.....	\$22.22
<b>TOWBOAT ON THE RIVER</b> (300-feet), pp. 14c, reg. \$14.98, on sale at.....	\$13.33

## 16mm. SILENT BLACKHAWK MOVIES



SCENE FROM "ADMIRAL DEWEY, HERO OF MANILA BAY"

### HISTORICAL COLLECTORS' FILMS FROM THE LIBRARY OF CONGRESS

<b>ADMIRAL DEWEY, HERO OF MANILA BAY</b> (400-feet), pp. 14c, reg. \$19.98, on sale at.....	\$18.88
<b>THE FIRST GLIDDEN TOUR, 1905</b> (300-feet), pp. 14c, reg. \$19.98, on sale at.....	\$18.88
<b>FOLLIES, FOIBLES AND FASHIONS, 1903-1905—Cheesecake of the Day</b> (350-feet), pp. 14c, reg. \$19.98, on sale at.....	\$18.88

### HISTORICAL RAILROAD FILMS FROM THE LIBRARY OF CONGRESS

<b>FAMOUS TRAINS OF WESTERN RAILROADS, 1897-1903</b> (300-feet), pp. 14c, reg. \$19.98, on sale at.....	\$18.88
<b>THE GEORGETOWN LOOP, 1903</b> (225-feet), pp. 14c, reg. \$12.98, on sale at.....	\$12.22
<b>THE HOLD-UP OF THE ROCKY MOUNTAIN EXPRESS, 1896-6</b> (300-feet), pp. 14c, reg. \$14.98, on sale at.....	\$14.44
<b>THE NARROW GAUGE CATSKILL MOUNTAIN RAILWAY, 1906</b> (300-feet), pp. 14c, reg. \$14.98, on sale at.....	\$14.44
<b>RAILROADING IN THE EAST, 1897-1906</b> (400-feet), pp. 14c, reg. \$22.98, on sale at.....	\$21.11

### FAMOUS MACK SENNETT-KEYSTONE COMEDIES

<b>BARNEY OLDFIELD'S RACE FOR A LIFE</b> (300-feet), with Ford Sterling, Mack Sennett, Mabel Normand and Barney Oldfield, pp. 14c, reg. \$14.98, on sale at.....	\$14.44
<b>THE ROUNDERS</b> (300-feet), with Charlie Chaplin and Fatty Arbuckle, pp. 14c, reg. \$14.98, on sale at.....	\$14.44
<b>TEDDY AT THE THROTTLE</b> (750-feet), with Gloria Swanson, Wallace Beery and Bobby Vernon, pp. 24c, reg. \$29.98, on sale at.....	\$28.88
<b>WIFE AND AUTO TROUBLE</b> (400-feet), with Willie Collier, Mae Busch and The Keystone Kops, pp. 14c, reg. \$17.98, on sale at.....	\$17.17

### COLLECTORS' FILMS FROM THE SILENT DAYS

<b>THE DEATH RAY</b> with PEARL WHITE, an episode from "The Exploits of Elaine" (800-feet), pp. 24c, reg. \$39.98, on sale at.....	\$35.55
<b>THE FOILED ELOPEMENT</b> with JAMES CRUZE and MARGUERITE SNOW, an episode from "Zadora" (400-feet), pp. 14c, reg. \$17.98, on sale at.....	\$17.77
<b>THE SAGA OF WILLIAM S. HART, 1914-1923</b> (1500-feet), pp. 14c, reg. \$59.98, on sale at.....	\$55.55

### RAILROAD MOVIES

<b>AT THE HUB OF THE BURLINGTON</b> (200-feet), pp. 14c, reg. \$7.99, on sale at.....	\$7.22
<b>THE CHIEFS OF THE SANTA FE</b> (200-feet), pp. 14c, reg. \$7.99, on sale at.....	\$7.22
<b>DONNER PASS</b> (200-feet), pp. 14c, reg. \$7.99, on sale at.....	\$7.22
<b>SAN FRANCISCO'S CABLE CARS</b> (200-feet), pp. 14c, reg. \$7.99, on sale at.....	\$7.22
<b>SOUTHERN PACIFIC—FROM SAN FRANCISCO BAY TO ROSEVILLE</b> (200-feet), pp. 14c, reg. \$7.99, on sale at.....	\$7.22
<b>SOUTHERN PACIFIC STEAM LOCOMOTIVES</b> (200-feet), pp. 14c, reg. \$7.99, on sale at.....	\$7.22

### COLOR PRINTS OF RAILROAD MOVIES

16mm. silent color prints of the above six railroad movies are available. The regular price per print is \$24.99. Postage per print is 14c.  
 Sale price, per print, only... **\$22.22**

### CHARLIE CHAPLIN COMEDIES

in which Edna Purviance appears as the feminine lead

<b>THE CURE</b> (750-feet), pp. 24c, reg. \$29.98, on sale at.....	\$28.88
<b>THE FLOORWALKER</b> (700-feet), pp. 24c, reg. \$29.98, on sale at.....	\$28.88
<b>POLICE</b> (700-feet), pp. 24c, reg. \$29.98, on sale at.....	\$28.88
<b>THE PAWN SHOP</b> (700-feet), pp. 24c, reg. \$29.98, on sale at.....	\$28.88
<b>THE VAGABOND</b> (700-feet), pp. 24c, reg. \$29.98, on sale at.....	\$28.88

### LAUREL & HARDY COMEDIES

(Sorry, but we can ship these only to points in Continental United States, Alaska and Hawaii)	
<b>DOUBLE WHOOPEE</b> (600-feet) with Jean Harlow, pp. 24c, reg. \$29.98, on sale at.....	\$26.66
<b>TWO TARS</b> (1000-feet), pp. 29c, reg. \$39.98, on sale at.....	\$35.55