



THE BUSER

with
CHARLES RAY
COLLEEN MOORE
JOHN GILBERT

Made by Thomas H. Ince in 1919 for release by Paramount in the second year of his contract with that organization, this short feature presents Charles Ray at the peak of his career, and Colleen Moore and John Gilbert near the beginnings of their respective climbs to the pinnacles of motion picture fame and popularity. But, in addition to this stellar material, "The Busher" is a thoroughly satisfactory example of Charles Ray's work, and typical of him at his best. Cast as the small town ball player, he is discovered by the St. Paul Pink Sox and skyrocketed to fame. But he soon forgets his friends back home, and leads the fast life of the city. His game suffers, he is dropped from the team, and returns home broke. His old friends, and particularly his girl friend, forgive him—and as the picture closes, he's given another chance for success in the big league. The original native of "The Busher" was available to us for the purpose of making our duplicating materials, and prints of this film are thus better than ever.

"The Busher", about 700-feet, 8mm., on four 5-inch reels, pp. 27c..... **\$19.98**



FROM NEW GUINEA TO JAPAN

with the
SUNSET DIVISION

The Sunset Division, made up of National Guardsmen from Oregon, Idaho, Washington, Montana and Wyoming received its baptism of fire in New Guinea in January, 1943. Then, as veterans of combat, this division swept the Japanese defenders from Aitape and Biak, took part in clearing the southern Philippines and moved on to Japan for the days following the close of World War II. Prepared with the cooperation of the Department of Defense.

"From New Guinea to Japan", about 150-feet, 8mm., pp. 12c..... **\$4.49**



FROM AUSTRALIA TO THE PHILIPPINES

with the
RED ARROW DIVISION

Here is a segment of combat in World War II told through the experiences of the famous 32nd Infantry Division—the Red Arrow Division—the first American unit airlifted into combat. We're right in there with them on Buna, Saldor, Aitape, Tete and Luzon in some tremendously spectacular fighting.

"From Australia to the Philippines", about 150-feet, 8mm., pp. 12c..... **\$4.49**

BOND MP29 PROJECTOR TABLE

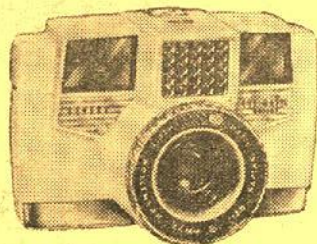
One of the most satisfactory and yet most economically priced projector tables we've yet come across. The table is 12" x 18"—half size to 24" x 16". Height is 20-inches. Comes in black finish with non-slip feet on legs. Folds flat for easy storage. 47.07 (not available, you now transportation on delivery). Blackhawk priced at or.....

\$7.49



Blackhawk Films
DAVENPORT, IOWA

New and Spectacular!



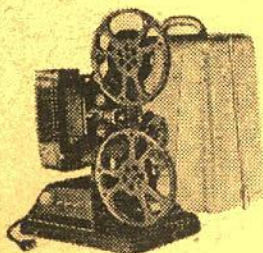
REVERE EE-127 ELECTRIC EYE-MATIC CAMERA with exclusive FLASH-MATIC CONTROL

Just aim and shoot! The Revere EE-127 is the world's most spectacular fully automatic camera! Complicated settings have been eliminated... every member of the family can now be an expert shutterbug without any previous photographic experience. Results are more impressive, too! Color transparencies, exposed on 127 film, fill the screen with new thrilling bigness and can be projected on a standard 35mm. projector. Color or black and white prints are better than ever!

The Revere EE-127 is equipped with the latest design f:2.8 Wollensak Reptar lens. Made of the finest, rare earth index glass—it's sharp, crisp and fully color corrected.

Flash pictures are easier than ever—the range finder movement is coupled directly with the iris affording complete automation when the camera is focused. Connections for Class "M" delay flash lamps and an "X" delay contact for strobe flash or the short peaked SM flash lamps. Manufacturer's list price, \$139.50.

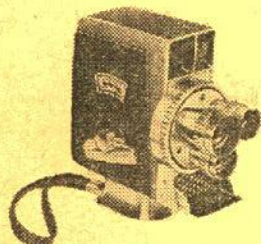
10-32, pp. 35c. Blackhawk special priced at only **\$114.95**



DeJUR CUSTOM "1000" 3mm. MOVIE PROJECTOR

Accepts 1000-watt projection lamp—750-watt lamp supplied. Takes 400-ft. capacity 8mm. reels—over 30-minutes of projection. Swing-out gate for easy threading and cleaning. 8mm. film splicer mounted on base. Automatic room light switch turns room lamp off when projector goes on. Magna-Vision (extreme wide angle) projection lens. Push-button power cord eliminates tangled wires. Variable speed control for forward or reverse. Still picture control. Rapid rewind. Easy-access, centralized control panel. Tilt mechanism adjusts for perfect beam control. Large blower for extra cooling. Sturdy, die cast, aluminum construction. Easy-to-carry traveling case. Manufacturer's nationally advertised price, \$179.00.

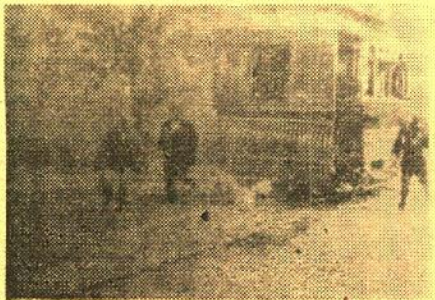
30-18 (you pay transportation on delivery), Blackhawk priced at only **\$124.44**



DeJUR ELECTRA AUTOMATIC 3mm. MOVIE CAMERA

The secret's in the meter! DeJur's 25 years of experience in manufacturing exposure meters makes Electra the perfected electric-eye camera that won't let you make a mistake! Has f:1.8 coated, color corrected three-lens turret system for taking normal, wide angle and telephoto pictures. "Tell-All" Viewfinder shows f-stops in numbers when there is enough light, a red band when there is not enough light and blacks out when turret is out of place. Takes 8mm. roll film. Manufacturer's nationally advertised price, \$149.95.

21-58, pp. 35c. Blackhawk priced at **\$99.95**



ON A GOOD OLD FIVE CENT TROLLEY RIDE

Here's an Edison offering of 1905 that was produced as a comedy for one of the early "silent reel" programs for the store shows. In addition to being of interest as an example of one of the early comedy films, it will also have particular appeal for trolley fans, although the emphasis is on comedy. Counted with this is a Biograph film of 1905, A TRIP TO SALT LAKE CITY—also a comedy of this early period—built around the theme of polygamy and taking place in a sleazy car of the day.

"On a Good Old Five Cent Trolley Ride", about 150-feet, 8mm., pp. 12c. **\$4.49**

GOOD USED AMPRO STYLIST 16mm. SOUND PROJECTORS

Manufactured between 1949 and 1952. A light weight, single case projector with 4-watt amplifier and 8-inch speaker. Operates at both sound and silent speeds, but not in reverse. Has 750-watt projection lamp, and takes up to 2000-ft. film reels. Our regular price on this model is \$177.77. Not available— you now transportation on delivery. \$25.00 deposit on C.O.D. shipments.

Good used Ampro Stylis
16mm. sound projector..... **\$144.44**

TWO SUPERLATIVE NEW 2"x2" COLOR SLIDE SETS FOR SPRING!

Photographed by
James L. Henry, Jr.



NEST LIFE OF THE GREAT HORNED OWL

(8 Blackhawk 2"x2" Color Slides)

Shows the growth and development of the Great Horned Owl at two days, one week, two weeks, three weeks and five weeks and flying—with three excellent shots of the mother owl returning to the nest, brooding and bringing home dinner in the form of a mouse. In the new Blackhawk super color!

Set 154, pp. 3c..... **\$1.95**



EASTERN BIRDS OF FIELD AND WOOD

(8 Blackhawk 2"x2" Color Slides)

An extremely colorful selection of eight different species photographed close-up—the bluebird, cardinal, flicker yellow shaft, sparrow hawk, blue jay, red eyed vireo, brown thrasher and wood thrush. In new Blackhawk super color!

Set 155, pp. 3c..... **\$1.95**

COMBINATION SPECIAL!

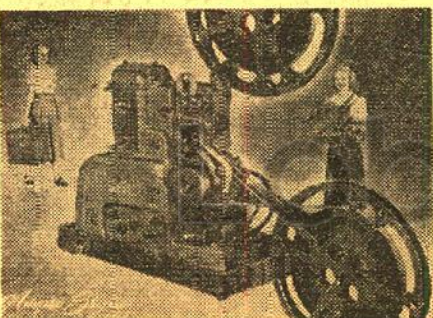
NEST LIFE OF THE GREAT HORNED OWL
AND
EASTERN BIRDS OF FIELD AND
WOOD. Purchased together at one time, one
set of each (pp. 6c), only..... **\$3.49**



ZORN NO-CORD LIGHT POINTER

Projects a glowing arrow on screen for emphasis during slides and movies! No cord! Standard battery operated! Projects its bright arrow image from 6 to 36 feet! Rubber end for stability and protection against shock! Pointer does not touch screen or slide! Operates on three standard "D" flashlight cells which are included.

16-40, pp. 27c..... **\$11.95**



NORWAY MIDSUMMER SKETCHES

(40 Blackhawk 2"x2" Color Slides)

Here is a superlative set of 2"x2" color slides photographed by Gerald Hibbs in the summer of 1958. Taking us from the lower end of the Scandinavian peninsula between Stromstad, Sweden, and Halden, Norway, we go through the ruggedly beautiful country between Oslo and Bergen, past wooded lakes, along the rim of precipitous fjords, past blue-white glaciers, on up the coast—Hardangerfjord, Saltstraumen, Takvatn, Billefjord, Sekkemo, Bodo, Narvik. From Narvik we head on north through Tromso to Hammerfest, world's most northerly city, and are treated to a group of beautiful views taken by the midnight sun. Then, on by ship from Russenes to Honningsvåg, with many moods of the sky and sea pictured... Nord Kapp (North Cape), the northernmost point in Europe, photographed by the midnight sun... and on to Karasjok and the Finnish border.

Set No. 181, 40 2"x2" color slides, **\$5.98**
pp. 6c.....

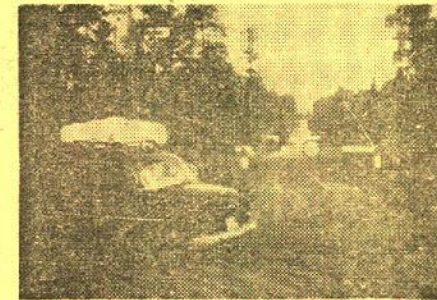


SUMMER IN LAPLAND

(16 Blackhawk 2"x2" Color Slides)

The semi-nomadic Laplanders in their traditional environment in northern Scandinavia, their relatively primitive life with their herds of reindeer and the Laplanders that have "gone modern". Almost half of the slides in this group deal with the "Midsummer's Eve" celebration at Fatmomalke, Sweden, where the Lapps and the Swedes annually congregate. The evening opens with services in the Lapp (Lutheran) Church, followed with the construction of a tall timber cross covered with local greenery, around which the young people dance and sing. The "Midsummer's Eve" ceremony was photographed by the light of the midnight sun.

Set No. 182, 16 2"x2" color slides, **\$2.49**
pp. 6c.....



FINNISH PASTORALE

(26 Blackhawk 2"x2" Color Slides)

The verdant beauty of northern Finland is most attractively pictured in this new set photographed by Gerald Hibbs. Starting out on the Finnish-Russian border, only a stone's throw from Russia itself, in the vicinity of Virtaniemi and Raja-Jooseppi, around Rovaniemi on the Arctic Circle, Jyväskylä, Viitasaari, Korholahti, Kolvu, Pihtimäki and down to the lovely Finnish city of Tampere with its modern business section, and beautiful parks.

Set No. 183, 26 2"x2" color slides, **\$3.98**
pp. 6c.....

COMBINATION SPECIAL!

NORWAY, MIDSUMMER SKETCHES,
SUMMER IN LAPLAND and FINNISH PASTORALE. All three sets purchased together
at one time (pp. 12c), only..... **\$11.11**

Best Buy!

BRAND NEW,
FIRST QUALITY
RADIANT
VYNA-FLECT
FILMASTER
TRIPOD
SCREENS



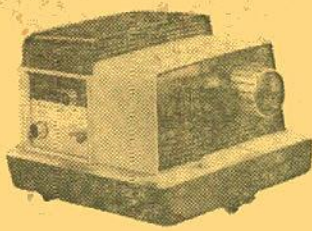
We have just made an advantageous purchase of three sizes of this quality line of Radiant screens with the famous Vyna-Flect glass beaded fabric that is flame and mildew-proof and washable.

44-36—37"x50", List \$31.95; Sale, \$19.99

44-34—45"x60", List \$30.95; Sale, \$24.44

44-35—52"x70", List \$47.95; Sale, \$28.88

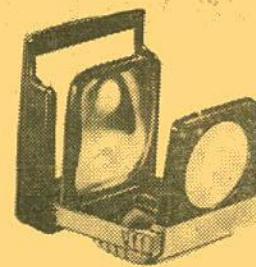
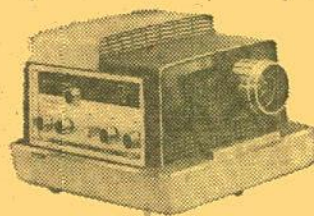
Screens generally exceed dimensions for mailing, and are thus shipped by express—you pay transportation on delivery.



The slide projector with the HIGH PICTURE FIDELITY . . .

BAUSCH & LOMB BALOMATIC

Slides never pop out of focus . . . take all 2"x2" slides
. . . no condenser change required . . . famous Bausch
& Lomb lens quality . . . illuminated centralized control
panels . . . finger-tip automatic or remote control!



BALOMATIC 305

with finger-tip automatic operation. Slides change by electrical impulse—most advanced finger-tip projector available. Front elevating device. Magnified slide index window. 40-slide tray and case. 500-watt lamp. 4" f:3.5 projection lens. Our No. 16-32, manufacturer's list price, \$99.50, Blackhawk's price **\$74.99**

BALOMATIC 300

with finger-tip automatic operation. Has all other features of Model 305. Our No. 16-31, manufacturer's list price, \$84.50, Blackhawk's price **\$64.99**
Balomatic Trays, manufacturer's list, each, \$1.25, our No. 17-12, pp. 17c, Blackhawk priced at only, each **99c**

BALOMATIC 500

with fully automatic operation. Time cycle control at any interval you wish, from 4 to 60 seconds for each slide. Also finger-tip automatic control at any time interval you choose. Remote control (optional). Illuminated focusing and elevating knobs. Magnified slide index window. 40-slide tray and case. 500-watt lamp. 5-inch, f:3.5 projection lens. Our No. 16-33, manufacturer's list price, \$149.50, Blackhawk's **\$109.99**
January-February price

Balomatic Remote Control Cord, 15-feet in length, for across the room operation with Models 500, 305 and 300, manufacturer's list price, \$4.95, **\$3.99**
our No. 16-34, pp. 23c, only

BALOMATIC PROJECTORS ARE SHIPPED BY EXPRESS—YOU PAY TRANSPORTATION ON DELIVERY

SPECIAL PURCHASE!
BUY AT JUST HALF
THE NATIONALLY ADVERTISED
PRICE!

\$1.95 ADMIRAL **COLOR-VUE SLIDE VIEWER** **HALF-PRICED AT 97c**

Largest lens of any folding viewer for 2"x2" slides and 35mm. filmstrips. Dual lens system guarantees maximum magnification—always in razor sharp focus! Positive action "pop-up" lens—both lenses completely protected when closed—folds flat to fit purse or pocket!

18-11, pp. 6c, only **97c**



2"x2" COLOR SLIDE SETS

1959 TOURNAMENT OF ROSES

Six sets each containing eight slides!

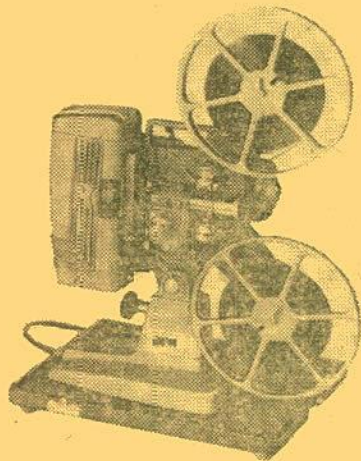
- 3860—1959 TOURNAMENT OF ROSES (Set 23)
- 3870—1959 TOURNAMENT OF ROSES (Set 24)
- 3880—1959 TOURNAMENT OF ROSES (Set 25)
- 3890—1959 TOURNAMENT OF ROSES (Set 26)
- 3900—1959 TOURNAMENT OF ROSES (Set 27)
- 3910—1959 TOURNAMENT OF ROSES (Set 28)

Also available, seventeen sets from previous years:

- CS3350—1958 Tournament of the Roses (Set 17)
- CS3360—1958 Tournament of the Roses (Set 18)
- CS3370—1958 Tournament of the Roses (Set 19)
- CS3380—1958 Tournament of the Roses (Set 20)
- CS3390—1958 Tournament of the Roses (Set 21)
- CS3400—1958 Tournament of the Roses (Set 22)
- CS2710—1957 Tournament of the Roses (Set 11)
- CS2720—1957 Tournament of the Roses (Set 12)
- CS2730—1957 Tournament of the Roses (Set 13)
- CS2740—1957 Tournament of the Roses (Set 14)
- CS2750—1957 Tournament of the Roses (Set 15)
- CS2760—1957 Tournament of the Roses (Set 16)
- CS2200—1956 Tournament of the Roses (Set 6)
- CS2210—1956 Tournament of the Roses (Set 7)
- CS2220—1956 Tournament of the Roses (Set 8)
- CS2230—1956 Tournament of the Roses (Set 9)
- CS2240—1956 Tournament of the Roses (Set 10)

Price, each set of eight 2"x2" color slides **99c**
Any six sets **\$4.99**

Allow 6c postage for first set,
3c for each additional set.



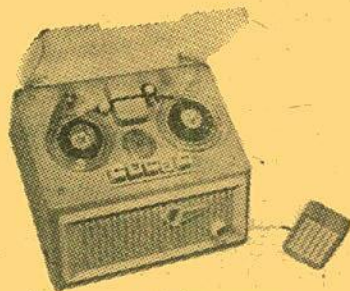
KEYSTONE K-105 750-watt 8mm. PROJECTOR

The lowest-priced 8mm. projector with these most-demanded features—750-watt lamp for brighter pictures; reversing control; geared film wind—both forward and reverse!

Has coated 1.6 1-inch lens, new style lamp house with condenser removable for cleaning, safety glass heat filter, all-gear film wind—no belts, advanced design film gate and side-sway eliminators for rock steady pictures, large size motor and blower for cool operation! Has precision-focusing switch, Lite-o-matic switch (turns room light on when projector light goes off), 400-foot reel capacity, rheostat speed control, rapid rewind, self-locking tilt mechanism.

KEYSTONE'S LIST, \$149.50

30-05, not available, you pay transportation on delivery—Blackhawk's price **\$87.77**



SPECIAL PURCHASE! G. B. C. PHONETIC (Model PT-12)

TAPE RECORDER

(Made in Italy)

This brand new, first quality

\$169.50 TAPE RECORDER

just now being replaced by a new model

AVAILABLE AT HALF PRICE only **\$84.75!**

Its size is only 4 3/4" x 8" x 9 1/2"—its weight only 10 pounds! It is beautifully designed and constructed by Italian craftsmen. Has dual track and dual speed—3 1/2 and 1 1/2 IPS. Has full 2 1/2-watts of undistorted power output and a frequency range of 75 to 7500 cps. at 3 1/2 IPS. Circuits include three vacuum tubes and built-in selenium rectifier. Operates off standard 110-volt, 60-cycle line. Electronic glow light assures proper volume when recording. Clock-type counter quickly locates specific section for playback corrections or erasures. Uses 3-inch tape reel. Comes complete with carrying case, microphone, reel of tape and rewind reel.

Our stock is limited! Order now on Blackhawk's 10-day return privilege! We feel this is one of the most sensational tape recorder buys we've ever offered!

59-13, pp. 99c, only **\$84.75**



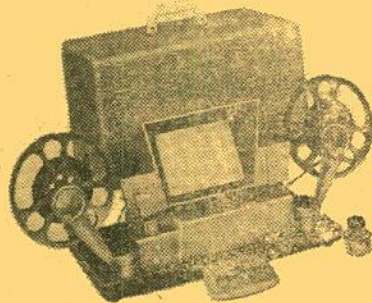
Special Purchase!

HPI SENIOR SPLICER MAKES BUTT SPLICES ON BOTH 8mm. and 16mm. FILM WITH MYLAR SPLICING TAPE

In addition to making butt splices—requiring no cement, no overlap or film and no scraping—this HPI Senior Splicer permits repair of torn film and broken sprocket holes without loss of any frames! Constructed from cast aluminum and stainless steel—lifetime guaranteed against wear and breakage. Splicing tape, mounting screws and complete instructions are included.

SAVE \$1.50!

34-12, nationally advertised at \$6.49; **\$4.99**
pp. 27c



Mansfield "HOLIDAY" 8mm. and 16mm. EDITORS

Action viewer provides large 4 1/2 x 6", brilliant picture! Built-in focusing, framing and film marker. Optical prism shutter. Precision ground and polished coated lens system. All front surface mirrors. Fold-away, geared (4-to-1 ratio) rewinds. Automatic film splicer with radial scraping blade. 400 ft. reel capacity. All aluminum die-cast construction. Sturdy wood carrying case covered with tweed-type cloth.

24-08, 8mm. editor, manufacturer's list price, \$64.50, pp. 91c, only **\$39.95**
24-09, 16mm. editor, manufacturer's list price, \$69.50, pp. 87c, only **\$44.55**

ELGEET SYNCHRONEX 3 f:1.8 13mm.

ELECTRIC EYE LENS

TO FIT YOUR PRESENT
D-MOUNT CAMERA

The world's first and only fully automatic, interchangeable movie lens for all 8mm. cameras using D-Mount lenses—this excludes Bell & Howell cameras. No external power source is required. Four element lens is fixed focus, and calibrated for ASA 10 (Daylight color) and ASA 16 (Tungsten color) films. Has filter retaining ring. May be operated with manual settings for special uses over the full range of f:1.8 to f:16.

28-34, manufacturer's list price, \$59.95; **\$47.95**
pp. 12c, Blackhawk priced at only



WALZ SUPERIMPOSER for 8mm. D-Mount Cameras

For use with 8mm. D-Mount cameras using series 4 adaptors, but adaptors available for such other cameras as Bell & Howell, Revue, Brownie, Bolex, Nicor, Yashica and Canon. Enables user to superimpose title on scene being photographed. Comes in nylon kit, complete with viewer, tilting surface, attachments including pan. Full instructions.

36-12, pp. 27c, manufacturer's list price, \$19.95; Blackhawk priced at only **\$17.95**

NEW BLACKHAWK LAY-AWAY PLAN!

You may purchase any items listed in the Blackhawk Bargain Bulletin on Blackhawk's New Lay-Away Plan—10% with your order—the balance to be paid at your convenience within a period of 90 days. No carrying or service charges—you pay only the regular cash price!

On receipt of your 10% deposit, we will physically pull from our stock what you have ordered, and set it aside in your name for delivery to you, within 90 days, as soon as we have received your payment in full! Simply show "Lay-Away Plan" on your order! (This new Blackhawk Lay-Away Plan in no way affects our Time Payment Plan, including Time Payment Add-On Orders, which continues in full effect.)

IT'S SHIP AHOY AND SHIP HA-HA!

Those old salts, Commodore Stan and Admiral Babe go off on a rollicking ocean voyage tied firmly to the dock. Then their moorings bust loose . . . and the fun begins . . . in the most hilarious film of their uproarious careers!

Hal Roach
presents

LAUREL & HARDY in "SAPS AT SEA"

Directed by GORDON DOUGLAS

AVAILABLE FOR SHIPMENT TO POINTS IN CONTINENTAL UNITED STATES,
ALASKA AND HAWAII

New 16mm. sound prints, about 2100-feet, on two 1600-ft. reels—priced: May 2 and after
at \$89.98—introductory priced through May 1 (pp. 44c) at only **\$77.77**

BLACKHAWK'S GUARANTEE

We want you to be satisfied with what you buy from Blackhawk. If after receiving an item you are disappointed in any way, return it to us transportation prepaid, in its original condition, and within ten days after you receive it, and we'll allow you full credit on some other purchase. Issue you a credit memo which you may later apply on some other selection, or give you a full refund.

AFTER INVENTORY CLOSE-OUTS OF BRAND NEW 8mm. AND 16mm. FILMS

THESE PRINTS ARE OUR REMAINING STOCKS OF TITLES
OR VERSIONS THAT WE ARE DROPPING FROM STOCK

MOST ARE PRICED AT LESS THAN NORMAL WHOLESALE!

BRAND NEW, FIRST QUALITY 50-ft., 8mm. WORLD IN COLOR FILMS IN KODACHROME

List price, \$7.50 Blackhawk's regular price, \$5.99
NO CHOICE OF TITLE BUT SELECTED
FROM THE FOLLOWING LIST

\$3.99 per print

Ask for "WORLD IN COLOR 8mm. SPECIAL"
Our No. 150-47
Allow 3c postage per print

ACADIA NATIONAL PARK
ANIMALS, STORY BOOK LAND, No. 1
ANIMALS, STORY BOOK LAND, No. 2
AQUARENA
BIG BEND, TEXAS
CHICAGO NATIONAL HISTORY MUSEUM
CIRCUS, ALLIGATOR FARM
CRYSTAL CAVE, PA.
DINOSAUR NATL. MONUMENT
ENDLESS CAVE, VA.
FENNEL ORCHID GARDENS
FIJORDS OF NORWAY
FRENCH WEST AFRICAN OUTPOSTS
GIBRALTAR
GRAND CAVERNS, VA.
HOWE CAVERNS, N. Y.
CAIRO
KING'S CANYON NATL. PARK
LEHMAN CAVES, NEV.
MAMMOTH CAVE, KY.
MAMMOTH ONYX CAVE, KY.
MESA VERDE NATL. PARK
MIAMI RARE BIRD FARM
MIAMI SERPENTARIUM
MT. VERNON
MUSA ISLE, SEMINOLE INDIANS
OLYMPIC NATIONAL PARK
RAINBOW SPRINGS, FLA.
RINGLING ART MUSEUM, FLA.
SANTA CLAUD LAND
STATUE OF LIBERTY
STEPHEN FOSTER MEMORIAL
STORYLAND, No. 1
STORYLAND, No. 2
SURF BOARD RIDING, HAWAII
THEATRE OF THE SEA
TIMPANOGOGES CAVE, UTAH
TROPICAL HOBBLAND
VIZCAYA MANSION
WASHINGTON'S CHERRY BLOSSOMS
WHITE SANDS, N. M.
WIND CAVE

BRAND NEW, FIRST QUALITY 50-ft., 8mm. B&W W. I. C. FILMS

List price, \$1.95 Blackhawk's regular price, \$1.79

NO CHOICE OF TITLE BUT SELECTED
FROM THE FOLLOWING LIST

\$1.11 per print

Ask for "W. I. C. BLACK & WHITE
8mm. SPECIAL"
Our No. 150-46
Allow 3c postage per print

ACADIA NATIONAL PARK
ALASKA TOTEM POLES
ANIMALS, STORYBOOK LAND No. 1
ANIMALS, STORYBOOK LAND No. 2
AQUARENA
ARCHES, UTAH
AUSABLE CHASM, N. Y.
BIG BEND, TEXAS
CASWELL ORCHID GARDENS
CEDAR BREAKS, UTAH
CHICAGO NATIONAL HISTORY MUSEUM
CIRCUS-ALLIGATOR FARM
CORAL CASTLE, FLORIDA
CORNING MUSEUM OF GLASS
CRATER LAKE
CRATERS OF THE MOON
CRYSTAL CAVE, PA.
DINOSAUR NATIONAL MONUMENT
DWIGHT D. EISENHOWER
ENDLESS CAVERNS, VA.
ESKIMO CHILDREN
FENNEL ORCHID GARDENS
FIJORDS OF NORWAY
FLOYD COLLINS CAVE, KY.
FOUNTAIN OF YOUTH, FLA.
FRENCH WEST AFRICAN OUTPOSTS
GIBRALTAR
GRAND CAVERNS, VA.
HOME OF F. D. R., HYDE PARK
HOOVER DAM
HOWE CAVERNS, N. Y.
JAMES MELTON AUTORAMA
CAIRO
JASHEA TREE, CALIF.
KINGS CANYON NATL. PARK
LASSEN NATL. PARK
LEHMAN CAVES, NEV.
MAMMOTH CAVE, KY.
MAMMOTH ONYX CAVE, KY.
MESA VERDE NATL. PARK
MIAMI RARE BIRD FARM
MIAMI SERPENTARIUM
MONTICELLO
MONUMENT VALLEY
MT. VERNON
MUSA ISLE, SEMINOLE INDIANS
OLDEST WOODEN SCHOOLHOUSE
OLD STORBRIDGE VILLAGE
OLYMPIC NATIONAL PARK
ONONDAGA CAVE, MO.
OREGON CAVES
PAN AMERICAN HIGHWAY
PETRIFIED FOREST
PINNACLES, CALIF.
PIONEER VILLAGE
RAINBOW SPRINGS
RINGLING ART MUSEUM
SAGUERO, ARIZ.
SAILING THE SKIES
SANTA CLAUD LAND
SARASOTA GARDENS
SCOTTY'S CASTLE
STATUE OF LIBERTY
STORYLAND, No. 1
STORYLAND, No. 2
SUGAR MILL GARDENS
SURF BOARD RIDING, HAWAII
THEATRE OF THE SEA
TIMPANOGOGES CAVE, UTAH
TROPICAL HOBBLAND
VIZCAYA MANSION
WAITE BIRD FARM
WASHINGTON'S CHERRY BLOSSOMS
WATERTON LAKES
WATKINS GLEN GORGE
WHITE SANDS, N. M.
WIND CAVE

BRAND NEW, FIRST QUALITY 50-ft., 8mm. CASTLE FILMS

List price, \$1.95 Blackhawk's regular price, \$1.79
NO CHOICE OF TITLE BUT SELECTED
FROM THE FOLLOWING LIST

\$1.11 per print

Ask for "CASTLE 8mm. HEADLINE SPECIAL"
Our No. 150-45
Allow 3c postage per print

ACE IN THE HOLE with Woody Woodpecker
AFRICA UNTAMED
ALI BABA AND THE FORTY THIEVES
AMERICA'S CAPITAL
ARABIAN NIGHTS
ATLANTIC CITY
BALI
BANFF AND LAKE LOUISE
BARBER OF SEVILLE with Woody Woodpecker
BATHING BUDDIES with Woody Woodpecker
BERMUDA
THE BIG CAGE
BRUSSELS WORLD'S FAIR
BUCCANEER WOODPECKER with Woody Wood-
pecker
CAGED FURY
CAMERA ON RUSSIA
CAMERA THRILLS OF THE WAR
CARNIVAL AT THE ZOO
CHAMPS OF THE CHASE with Abbott and Costello
CHIMP ON THE FARM
CHIMP STEPS OUT
CHIMP THE AVIATOR
CHIMP THE CHUMP
CHIMP THE COVBOY
CHIMP THE FIREMAN
CHIMP THE SAILOR
CINDERELLA AND THE SILVER SKATES
CIRCUS AT THE ZOO
CIRCUS SLICKER with W. C. Fields
CLYDE BEATTY'S ANIMAL THRILLS
COO COO BIRD with Woody Woodpecker
CORONATION OF ELIZABETH II
CREATURE FROM THE LAGOON
CROCODILE THRILLS
DIZZY ACROBAT with Woody Woodpecker
ESCAPE IN CANADA
EXOTIC BALI
FAIR WEATHER FIENDS with Woody Woodpecker
FANTASTIC YELLOWSTONE
THE FIRST CHRISTMAS
FLAMING JUNGLE
FLORIDA'S HIGH SPOTS
FLYING ACTION
ABBOTT & COSTELLO IN THE FOREIGN LEGION
FUN ON THE RUN with Abbott and Costello
THE GATE CRASHER with Woody Woodpecker
GATEWAY TO THE HIMALAYAS
GATEWAY TO THE ORIENT
GAY NINETIES LIVE AGAIN
GLACIER NATIONAL PARK
THE GOOFY GOLFER with Woody Woodpecker
GRAND CANYON
GRAND CANYON GRANDEUR
THE GREAT CHASE with W. C. Fields
HARLEM GLOBETROTTERS
HAWAII
HERE COMES THE CIRCUS
HIGH FLYERS
HISTORIC QUEBEC
HIT THE SILK
HOLIDAY IN HOLLAND
HOLLYWOOD MATADOR with Woody Woodpecker
HOT SHOT HERO with Woody Woodpecker
INVISIBLE WOODY with Woody Woodpecker
IT CAME FROM OUTER SPACE
KILLER GORILLA
KITCHEN MECHANICS with Abbott and Costello
KNIGHTS OF THE BATH with Abbott and Costello
LAND OF THE PYRAMIDS
LION-TIGER FIGHT
THE LONE STRANGER with Woody Woodpecker
MAN AGAINST MOUNT EVEREST
MARY'S LITTLE LAMB
MEXICO
MIDGET CAR MANIACS
MOVIES GREATEST HEADLINES
NO BULLS, PLEASE with Abbott and Costello
NO INDIANS, PLEASE with Abbott and Costello
OPERATION SAWDUST with Woody Woodpecker
OYSTERS AND MUSCLES with Abbott and Costello
PARIS
PERFECT CONTROL with Babe Ruth
PUNY EXPRESS with Woody Woodpecker
RAILROAD STORY
RECKLESS DRIVER with Woody Woodpecker
REDWOOD SAP with Woody Woodpecker
RIOT ON ICE with Abbott and Costello
ROCKET AND ROLL with Abbott and Costello
ROMANTIC ITALY
THE SCREWBALL with Woody Woodpecker
SIMBA, KILLER LION
SLEEP HAPPY with Woody Woodpecker
SMALL FRY CIRCUS
SMOKED HAM with Woody Woodpecker
SOLID IVORY with Woody Woodpecker
S. O. S. ICEBERG
SOUTH PACIFIC HORIZONS
TEN FATHOMS DEEP
TERMITES FROM MARS with Woody Woodpecker
THREE LITTLE BRUINS GO CAMPING
THREE LITTLE BRUINS GREAT ADVENTURE
THREE LITTLE BRUINS IN A CANOE
THREE LITTLE BRUINS MAKE FRIENDS
THREE LITTLE BRUINS MAKE MISCHIEF
THREE LITTLE BRUINS ON A SPREE
VOYAGE OF THE MAYFLOWER II
VICTORY OVER GERMANY
WAR OF THE PLANETS
WELL OILED with Woody Woodpecker
WHAT'S SWEEPIN' with Woody Woodpecker
WHO'S COOKIN' WHO? with Woody Woodpecker
WICKY WACKY with Woody Woodpecker
WILD RIVER SAFARI
WOODY DINES OUT with Woody Woodpecker
YESTERDAY LIVES AGAIN
YOSEMITE WONDERLAND
YOUNG AND HANDSOME with Woody Wood-
pecker
ZIPPY'S BEACH ADVENTURE
ZIPPY'S BIRTHDAY PARTY
ZULU HULU

BRAND NEW, FIRST QUALITY 150-ft., 8mm. CASTLE FILMS

Castle's list price, \$5.95 Blackhawk's regular price, \$4.98
NO CHOICE OF TITLE BUT SELECTED BY US
FROM THE FOLLOWING LIST

\$3.33 per print

Ask for "CASTLE 8mm. COMPLETE SPECIAL"
Our No. 150-44
Allow 12c postage first print, 6c each additional.

ACE IN THE HOLE with Woody Woodpecker
AFRICA UNTAMED
ALI BABA AND THE FORTY THIEVES
BATHING BUDDIES with Woody Woodpecker
BUCCANEER WOODPECKER with Woody Wood-
pecker
CHIMP THE CHUMP
CINDERELLA AND THE SILVER SKATES
CIRCUS SLICKER with W. C. Fields
CONTEST JITTERS (Sport)
COO COO BIRD with Woody Woodpecker
CORONATION OF QUEEN ELIZABETH II
CROCODILE THRILLS
DIZZY ACROBAT
A DOG-GONE STORY
EXOTIC BALI
FANTASTIC YELLOWSTONE
FIGHTING FISH
FISHING VAGABONDS
FLAMING JUNGLE
FLASHING FIGURES
FLORIDA HIGH SPOTS
ABBOTT AND COSTELLO IN THE FOREIGN
LEGION
GATE CRASHER with Woody Woodpecker
GATEWAY TO THE ORIENT
GAY NINETIES LIVE AGAIN
THE GOOFY GOLFER with Woody Woodpecker
GRAND CANYON GRANDEUR
HERE COMES THE CIRCUS
HISTORIC QUEBEC
HIT THE SILK
HOLLYWOOD MATADOR with Woody Woodpecker
HOT SHOT HERO with Woody Woodpecker
JAPAN SURRENDERS
KILLER GORILLA
THE LITTLE LAMB
MAN AGAINST MT. EVEREST
MEXICO
OPERATION SAWDUST with Woody Woodpecker
PARIS
PERFECT CONTROL with Babe Ruth
PERILS OF THE WILD
RAILROAD STORY
SIMBA, KILLER LION
SMALL FRY CIRCUS
SON OF ALI BABA
SOUTH PACIFIC HORIZONS
STAGECOACH HOAX
STWO FOR THE POT
THREE LITTLE BRUINS MAKE FRIENDS
THE THREE MUSKETEERS
THRILL MAKERS
WEEKEND DRIVER
WHAT'S SWEEPIN' with Woody Woodpecker
WHO'S COOKIN' WHO? with Woody Woodpecker
WHO'S NEW AT THE ZOO?
WICKY WACKY with Woody Woodpecker
WILD RIVER SAFARI
YESTERDAY LIVES AGAIN
YOUNG AND HANDSOME with Woody Wood-
pecker

BRAND NEW LABORATORY SECONDS 16mm. sound and 16mm. silent BLACKHAWK RELEASES

BUY FOR THE PRICE OF USED PRINTS!
Allow 14c postage for first print, 10c each additional
print selected from group!

These laboratory seconds are so classed because they
are not up to standard in intensity of print—some may
be a little lighter than normal—others a bit darker.
Some may be unevenly printed in that there may be
a light streak down one section of the film. Others
may have a negative scratch showing at some point
on the picture. But, by and large, these are very
usable prints and are priced like used copies. Our
regular guarantee applies. If you don't like them, send
them back!

16mm. sound—Laurel & Hardy
WAY OUT WEST (2400-ft.) \$48.88
THE MUSIC BOX (1000-ft.) \$19.99
THE LIVE GHOST (800-ft.) \$16.66

16mm. silent—Charlie Chaplin
POLICE (800-ft.) \$16.66
THE PAWN SHOP (700-ft.) \$16.66
THE ROUNDERS (350-ft.) \$7.77

16mm. silent—Mack Sennett—
Keystone Comedies
BARNEY OLDFIELD'S RACE FOR A
LIFE (300-ft.) \$8.88
WIFE AND AUTO TROUBLE (400-ft.) \$9.99

16mm. sound—Fred McLeod's Albums
of Steam Locomotives
AT SHERMAN HILL ON THE UNION
PACIFIC (300-ft.) \$8.88
ON THE BALTIMORE AND OHIO (300-ft.) \$8.88
ON THE DELAWARE & HUDSON (300-ft.) \$8.88
ON THE PENNSYLVANIA (300-ft.) \$8.88

16mm. sound—Miscellaneous Subjects
THE CALIFORNIA ZEPHYR (300-ft.) \$8.88
INSTRUMENTS OF THE ORCHESTRA
(700-ft.) \$16.66
JULIUS CAESAR (The Forum Scene) (600-ft.) \$14.44

16mm. silent—Collector's Items
THE HOLD-UP OF THE ROCKY MOUNTAIN
EXPRESS (300-ft.) \$8.88

USED CAMERAS TAPE RECORDERS PROJECTORS EDITORS

Take your choice of these used items—many in almost
new condition—others in good typical used condition
—all at bargain prices.

CAMERAS

Allow 35c for postage, insurance and packing
on each camera.

Still Cameras

KODAK FOLDING MONITOR, uses 620, F:4.5 to
F:32, shutter 1/25 to 1/400, nipple type flash con-
nection, flash sync. (Our No. 1057) \$24.95
ROLLEICORD COMPUR, uses 120, has F:3.5 Zeiss
lens, shutter speeds 1 to 1/100 sec., nipple type
flash connection and sync. (Our No. 1185) \$27.95
PERFEX, 35mm., has Wollensak F:4.5 50mm. lens,
shutter speeds of 1/25 to 1/100, coupled rangefinder,
flash connection. (Our No. 1181) \$11.95
KODAK PONY 828, Kodak Anastar F:4.5 lens,
shutter speeds 1/25 to 1/200. (Our No. 1191) \$16.95
ARGUS A2F, 35mm., F:4.5 lens, exposure speeds of
T, B, and 1/25 to 1/150th seconds. (Our No.
965) \$9.95
ARGUS FA, 35mm., F:4.5 lens, exposure speeds of
1/25, 1/50, 1/100 and 1/150th seconds. (Our No.
1198) \$9.95
ARGUS A2B, 35mm., F:4.5 lens, exposure speeds
of 1/25, 1/50, 1/100 and 1/150th seconds. (Our
No. 1199) \$9.95
KODAK MONITOR, uses 620, F:4.5 lens, exposure
speeds of 1 to 1/400th seconds, Flash synchronized,
uncoupled rangefinder. (Our No. 1188) \$14.95
CIRO 35, 35mm., F:4.5 Wollensak lens, exposure
speeds of 1/25 to 1/150th seconds. Coupled range-
finder, flash synchronized, exposure counter. (Our
No. 1190) \$14.95

8mm. Projectors

REVERE 88, F:2.5 lens, speeds of 8, 12, 16, 24,
32-fps. roll film type. (Our No. 1102) \$19.95
BELL & HOWELL SPORISTER, F:2.5 lens, speeds
of 16, 32, 48, 64-fps., roll film type. (Our No.
1202) \$19.95
BELL & HOWELL 172, f:1.9 lens, magazine type,
exposure speeds of 16, 24, 32 and 64-fps. (Our
No. 1179) \$34.95
BELL & HOWELL 252, F:1.9 fixed focus standard
lens with telephoto conversion lens. User roll film.
(Our No. 1259) \$12.95
KEYSTONE K-25 8mm. CAMERA, F:2.3 lens, top
mounted exposure meter. Like new, in original car-
ton. PP 35c. (Our No. 1370) \$24.95

Stereopticons and Opaque Projectors

SPENCER DELINEASCOPE Model J 3 1/4"x4" STEREOPTICON PROJECTOR. Uses 1000-watt lamp. Two
available, our Nos. 1289, 1290. (Shipped express
collect, not mailable.) Each \$24.95
BAUSCH & LOMB COMBINATION 3 1/4"x4" SLIDE,
6"x6" OPAQUE PROJECTOR. Has 1000-watts il-
lumination. Our No. 1291. (Not mailable, shipped
express collect.) \$24.95
BESELER 6"x6" OPAQUE PROJECTOR. 500-watts
illumination. Illumination and lens system to projector
3 1/4"x4" slides—but no slide carrier. Our No. 1155.
(Not mailable, shipped express collect.) \$19.95
KEYSTONE PICTOGRAPH 6"x6" OPAQUE PRO-
JECTOR. Has 300-watt lamp. Not mailable, shipped
express collect. Two available, our Nos. 1209, 1210.
Each \$14.95

35mm. Sound Filmstrip Projectors

DUKANE EXPLAINETTE 35mm. SOUND FILM-
STRIP PROJECTOR. Uses 100-watt lamp, takes stand-
ard 3 1/2-rpm. records and transcriptions. Amplifier
and speaker capacity suitable for small meeting rooms.
(Not mailable, shipped express collect.) Our No.
834 \$12.95
ILLUSTROVOX JR., 35mm. SOUND FILMSTRIP
PROJECTOR. Uses up to 16-inch 3 1/2-rpm. radio
transcription discs. Takes 100-watt projection lamps.
Three available, our Nos. 1136, 1137, 1138. (Not
mailable, shipped express collect.) Each \$19.98
MAGNAVOX SENIOR 35mm. SOUND FILMSTRIP
PROJECTOR. Uses up to 12-inch diameter standard
groove recordings at either 3 1/2-rpm. or 78-rpm.
Has 500-watt lamp. (Our No. 1212). Shipped express
collect, not mailable. \$19.95

2"x2" Slide Projectors

GOLDE 300-watt 2"x2" SLIDE PROJECTOR. Blower
cooled. Excellent condition. Automatic slide changer.
PP 51c. Our No. 1372. \$17.98

8mm. Projectors

BRUMBERGER THUNDERBIRD 8mm. PROJECTOR.
150-watt lamp, takes 200-ft. film reels. Like new.
Our No. 1368. \$19.98

Tape Recorders

KEYSTONE K-400 TAPE RECORDER. Records and
plays back at both 3 1/4-ips and 7 1/2-ips. Takes 7"
tape reels. A new, but slightly shopworn unit. Has
slight operating click in mechanism that neither records
nor plays back. Sold new for over \$200.00. Shipped
express collect, not mailable. Our No. 1315. \$89.95
REVERE T-500 DeLUXE RECORDER, records at
1 1/2-ips. only, half track, 5-inch reels. (Our No. 1286).
Shipped by express collect, not mailable. \$29.98

Editors

PRACO 8mm. ACTION EDITOR. An 8mm. action
editor built like a vertical tape recorder, housed in its
own carrying case. Good operating unit, excellent
used condition. Our No. 1365. pp. 37c. \$19.98

Blackhawk Films
DAVENPORT, IOWA

SPRING BARGAINS IN USED 16mm. SOUND PROJECTORS

Projector prices are exclusive of transportation and projectors, because of weight, are not mailable. For most destinations, Railway Express is the most satisfactory method, but we'll be glad to ship by freight—either truck or rail—if you request. Projectors will not be shipped C.O.D. without a deposit of \$25.00 to guarantee transportation charges.

AMPRO PREMIER 10

Manufactured from 1945 to 1947. Has 15-watt amplifier and 12-inch PM speaker. Operates at both sound and silent speeds, and in reverse.

\$122.22

AMPRO SUPER STYLIST 10 (Single Case)

Current model. Has 10-watt amplification and 10-inch PM speaker. Operates at governor-controlled sound speed and at variable speeds.

\$199.99

AMPRO CENTURY 5 (Single Case)

Manufactured in 1948 and 1949. Has 5-watt amplifier, 6-inch PM speaker. Runs at sound speed only on 105-125 A.C.

\$99.95

AMPRO CENTURY 10

Manufactured in 1946 and 1947. Has 15-watt amplifier, 12-inch PM speaker. Runs at sound speed only.

\$117.77

AMPRO PARAMOUNT 20

Manufactured in 1947 and 1948. Has 15-watt amplification and 12-inch speaker. Does not operate in reverse.

\$166.66

AMPRO STYLIST (Single Case)

Manufactured between 1949 and 1952. Has 4-watt amplification and 8-inch speaker. Operates at sound and silent speeds. Does not operate in reverse.

\$144.44

AMPRO COMPACT (Single Case)

Manufactured between 1948 and 1951. Has 5-watt amplification and 8-inch speaker. Operates at both sound and silent speeds. Does not operate in reverse.

\$166.66

BELL & HOWELL 156

Manufactured from 1942 to 1945. Has amplifier of 15-watt capacity, 12-inch speaker. Operates at sound and silent speeds, and in reverse.

\$144.44

BELL & HOWELL 185 (Single Case)

Manufactured from 1949 to 1951. Has amplifier of 10-watt output, 10-inch speaker. Operates at sound and silent speeds, and in reverse.

\$199.95

BELL & HOWELL 138

Manufactured between 1936 and 1940. Has 6-watt amplification and 8-inch speaker. Operates on 60-cycle, AC only. Is equipped with 750-watt lamp and 2-inch focal length projection lens. Takes up to 1600-foot capacity film reels. Has motor-driven rewind. Most of these units operate at sound speed only—but a few operate on silent speed also.

\$109.99

BELL & HOWELL 179

Manufactured in 1945 and 1946. Has 15-watt amplifier, 12-inch PM speaker. Operates at both sound and silent speeds, and in reverse.

\$177.77

DeVRY RS

Manufactured between 1941 and 1948. Has 30-watt amplifier, 12-inch PM speaker. Operates at both sound and silent speeds.

\$112.22

DeVRY SUPER 16

Manufactured between 1949 and 1952. Has amplifier of 15-watt capacity, 12-inch PM speaker, 750-watt projection lamp, 2-inch standard projection lens. Operates at sound speed on 60-cycle AC only. Has motor-driven rewind. Takes up to 2000-foot capacity film reels.

\$155.55

EASTMAN KODASCOPE PAGEANT (Single Case)

Manufactured between 1949 and 1954. Has 5-watt amplification and 6-inch speaker. Does not operate in reverse. Runs at sound speed only.

\$179.95

MOVIE MITE 63 (Single Case)

Manufactured from 1946 to 1951. Has amplifier of about 4-watt output, 6-inch PM speaker. Operates at both sound and silent speeds.

\$89.95

NATCO 3030 (Single Case)

Manufactured between 1948 and 1951. Has 5-watt amplifier, 8-inch PM speaker. Operates at both sound and silent speeds.

\$119.95

RCA 400 SENIOR

This is the type manufactured between 1950 and 1954. Has amplifier of 10-watt capacity, 10-inch PM speaker. Operates at both sound and silent speeds—speed controlled by synchronous motor.

\$189.95

RCA 400 SENIOR (FP-10)

Manufactured from 1947 to 1950. Has amplifier of 10-watt capacity, 10-inch PM speaker. Operates at both sound and silent speeds—speeds governor controlled.

\$169.95

TSI DeVRYLITE 5-R (Single Case)

Next to current model. Has 5-watt output, 6-inch PM speaker. Operates on both AC/DC. Operates at both sound and silent speeds, and in reverse.

\$189.95

VICTOR MODEL 55

Manufactured between 1947 and 1949. Single case unit operating at both sound and silent speeds, and in reverse. Still picture clutch. Motor driven rewind. Has amplifier of 5-watt capacity and "Alnico V" oval speaker, 4"x6".

\$155.55

VICTOR 56C

Manufactured in 1949 and 1950. Single case unit, operating at both sound and silent speeds. Has still picture clutch. Has amplifier of 4-watt output and 4-inch x 6-inch oval PM speaker. Operates on either AC or DC.

\$169.95

VICTOR 24B

Manufactured from 1934 to 1937. Has amplifier of 15-watt capacity, 12-inch speaker. Operates at both sound and silent speeds.

\$99.95

VICTOR 40A

Manufactured in 1939 and 1940. Has amplifier of 15-watt amplification, 15-inch speaker. Operates at both sound and silent speeds, and in reverse.

\$99.95

VICTOR 60-10 (Single Case)

Manufactured from 1950 to 1954. Has amplifier of 4-watt output, 6" x 9" oval speaker. Operates at both sound and silent speeds.

\$177.77

New 16mm. Cameras

BELL & HOWELL

240EE

16mm.

ELECTRIC EYE CAMERA



The world's easiest-to-use 16mm. cameras. Press a single button to capture every scene, every thrill—every time! The automatic Electric-Eye continuously acts the lens for you—even if the light changes as you shoot! Fast 20mm. f:1.9 lens in focusing mount gives 56% wider coverage than most standard lenses. Warning signal in viewfinder shows when there's not enough light for good pictures. Accepts economical 100-ft. single or double perforated roll film. Automatic threading takes only seconds. Five camera speeds from eight to forty-eight frames per second. Extra long 32-ft. film run per winding. Cable release socket. Automatic control panel—shows amount of motor power and film remaining. All die-cast aluminum—finished in Tyrolean gray leather and satin chrome. Manufacturer's list price, \$329.95.

21-24, pp. 55c. Blackhawk priced at **\$249.95**



KEYSTONE CRITERION A-9 16mm. ROLLFILM CAMERA

Light and compact, it is a precision instrument, superbly engineered. Has f:2.5 coated and color-corrected lens in fixed-focus mount. Optical viewfinder close to lens, lets you see what lens sees. Takes at seven speeds from 10 to 64 frames—three-way trigger for single frame, continuous lock run and self-movies—audible scene-length indicator reports both audibly and visibly as to footage exposed—its single claw takes one side perforated sound film as well as regular perforated stock. Heavy duty spring motor drives 20 feet at one winding. Finished in weatherproof vinyl and satin chrome.

LIST PRICE, \$119.50

Keystone Criterion A-9 16mm. Rollfilm Camera, our No. 21-06, (plus 51c postage), close-out priced at **\$77.77**



WOLLENSAK HI-FIDELITY TAPE RECORDER MODEL T-1500

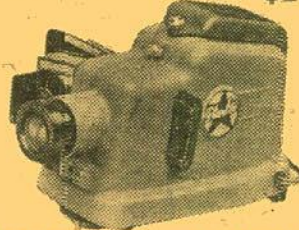
Size approximately 6 1/2 x 10 1/4 x 11 3/4 inches. Weight, 18 pounds. 7-inch reel capacity. 10-watt push-pull audio output. Keyboard control. Pre-amplifier output jack. Exclusive high speed lever. Two level recording indicator. Dual high-low output. Instant stop lever. Record key lock. Extension speaker jack. Precision index counter. Two-speed knob for 3 1/2-IPS. or 7 1/2-IPS. can be switched at any time during any playing or recording operation. High frequency erase. P. A. amplifier output. Real portability with console performance—40 to 15,000-cps. at 7 1/2-IPS.—40 to 7,500-cps at 3 1/2-IPS. Transportation extra. No C.O.D.'s on this item.

59-01, manufacturer's list price, \$189.50; Blackhawk's price **\$149.50**

WOLLENSAK STEREOGRAPHIC TAPE RECORDER

Similar in appearance to monaural model illustrated above. This hi-fidelity stereophonic, dual speed tape recorder—stacked head—ceramic microphone—monaural record and playback, plus stereophonic playback. Amplifier and speaker of your TV or radio serve as second channel for playing stereo tapes. All basic features and accessories similar to monaural model described above. Not mailable—you pay transportation on delivery.

Wollensak Stereophonic Hi-Fidelity Tape Recorder, our No. 59-06. Manufacturer's list price, \$229.50. Blackhawk priced at only **\$169.95**



MANSFIELD "STARLITE" AUTOMATIC 2"x2" SLIDE PROJECTOR

For all 2"x2" and super slides. Has Presto-Matic changer that holds forty-six slides. Die-cast aluminum construction. 5-inch F3.5 color corrected lens. Double aspheric condenser lens system, all optics hard coated. Rack and pinion focusing. Uses 150-watt tru-focus bulb. Manufacturer's list price, \$24.95.

16-29, pp. 43c **\$17.95**

16mm., 8mm., 35mm. CINELARGERS

These Cinelargers make excellent enlargements of individual frames of your movies using No. 620 roll-film as a negative. Cutting or splicing your original is unnecessary!

16mm. Cinelarger, our No. 23-02, postage 27c, only **\$17.95**

8mm. Cinelarger, our No. 23-01, postage 27c, only **\$17.95**

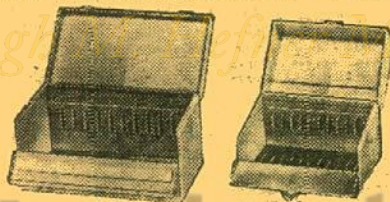
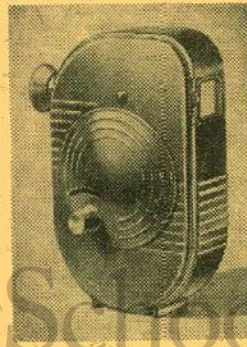
35mm. Cinelarger, similar to 8mm. Cinelarger illustrated, for making enlargements of your color slides, our No. 30-03 (pp. 27c), only **\$22.95**

AIDS POCKET VIEWER

The hand-held 8mm. viewer. Shows in normal action, slow motion, still view your personal 8mm. Kodachrome and black and white films — and 50' reels of all other 8mm. subjects. Simple operation—a child can load and see movies in less than a minute! Ideal for home movie fans—perfect for the kids—just the gift for the man overseas—welcomed by the shut-in. Not suitable for use in editing.

Aids Pocket Viewer, our No. 37-04, (pp. 12c) **\$4.95**

Aids Light Accessory including Battery for use with Aids Pocket Viewer, our No. 37-05, (pp. 6c) **\$1.79**

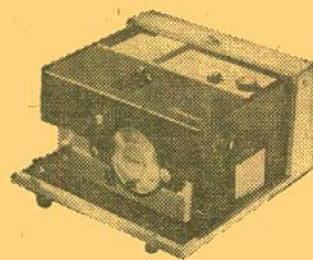


LOGAN REEL CASES

All metal construction, piano hinge top and front, nickel-plated handle and latch. Three sizes for 16mm. and 8mm. film, and recording tape.

33-01—Holds twelve 200-ft. capacity 8mm. or 5-inch magnetic tape reels, pp. 39c **\$2.98**

33-02—Holds twelve 400-ft. capacity 8mm. or 7-inch magnetic tape reels, pp. 43c **\$3.79**



KODAK CAVALCADE MODEL 500 2"x2" AUTOMATIC SLIDE PROJECTOR

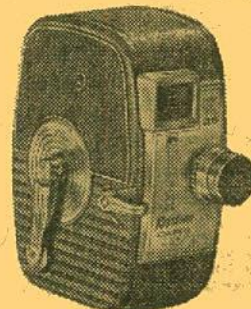
Completely new versatility in automatic projection. Projector changes slides either at preset intervals, semi-automatically, or manually. Slides stay in focus. Unique editing feature allows showing single slides or allows editing slides without removing the magazine from the projector. Slides are stored and shown in new-type magazine which is inserted into the projector right side up. Brightness selector provides choice of 500-watt or 300-watt illumination. Movable pointer for pointing out details of each slide. Extra-fast slide change minimizes dark-screen time between slides. Micro-focus elevation and focus adjustments. Optical system, condenser lenses and reflector readily removable for cleaning. Preview screen and cord storage provided inside cover. Color: textured gray and black with gold color trim. Comes complete with one tray (No. 1, for 40 cardboard mounted slides).

16-16, manufacturer's list price, \$149.50; pp. 87c **\$117.95**

ONLY A LIMITED NUMBER You can buy this brand new, first quality

KEYSTONE CAPRI K-25

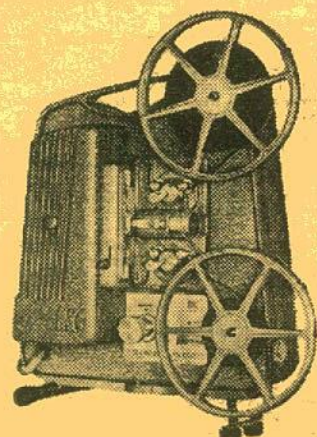
8mm. ROLLFILM CAMERA (manufacturer's list price, \$49.95)



for just **1c**

when purchased in conjunction with this brand new, first quality

KEYSTONE K-75 8mm. MAGNA-SCOPE PROJECTOR



at the manufacturer's regular list price of only

\$77.50

You pay just \$77.51 for the combination of camera and projector when purchased together at one time.

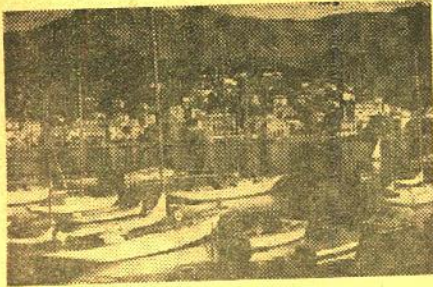
The KEYSTONE CAPRI K-25 8mm. ROLLFILM CAMERA comes with a fixed focus F:2.3 lens, coated and color corrected. Large, genuine ground optical glass finder. Exceptionally quiet operation, light-weight all aluminum die-cast construction, built-in socket on flat underside, governor controlled motor for even, friction-free running of film, beautifully finished in vinyl and brushed satin chrome. Simple, easy loading . . . footage indicator . . . three-way trigger for regular run, continuous run for self-movies or single-frame shots for tricks. Fold-away crank.

The KEYSTONE K-75 8mm. MAGNA-SCOPE PROJECTOR has 500-watt projection lamp; selector-matic control using single knob for motor, lamp, rewind and off; precision focusing knob; fast, automatic rewind; positive-locking tilt control; easy-threading film gate; 300-foot film reel. Lite-o-matic switch turns room lights on and off. Blower assures cool-running and long lamp-life.

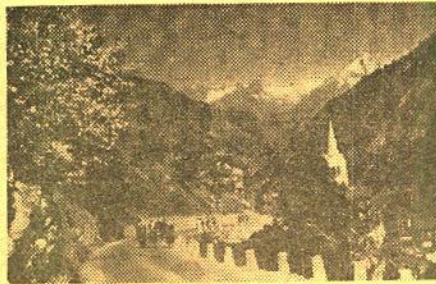
Keystone Capri K-25 8mm. Rollfilm Camera specially priced at **1c**

ONLY WHEN PURCHASED IN CONJUNCTION WITH A

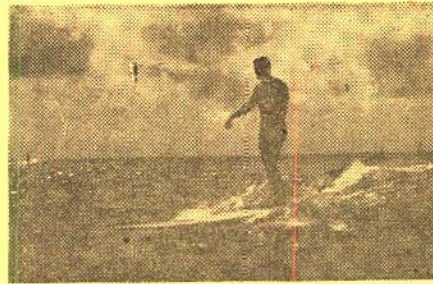
Keystone K-75 8mm. Magna-Scope Projector (our No. 30-DC) **\$77.50** priced at **\$77.50**



"ALONG THE ITALIAN RIVIERA"



"SWISS ALPINE SCENES"



"HAPPY HAWAIIAN ISLANDS—OAHU"

Service's Slide Supply 2"x2" COLOR SLIDES

EIGHT DOUBLE FRAME 2"x2" COLOR SLIDES TO A SET

Allow 6c postage for first set, 3c postage for each additional slide set from this group.

Price, one set..... **99c** Three sets..... **\$2.79** Six sets..... **\$4.99**

New England

CS70—Acadia National Park
CS930—Autumn Artistry in New Hampshire
CS1710—Autumn Artistry in the White Mountains
CS3310—Autumn Splendor, New Hampshire
CS50—Boston, Mass.
CS60—Massachusetts
CS1690—Picturesque Maine
CS90—Scenic New Hampshire
CS80—Winter in Vermont

New York—State and City

CS1150—Famous Buildings of New York City
CS130—New York City
CS500—Niagara Falls (Set No. One)
CS510—Niagara Falls (Set No. Two)
CS1230—Niagara Falls at Night
CS1170—Night and Street Scenes of New York City
CS1140—Skyscrapers of New York City
CS1160—Statues and Bridges of New York City

District of Columbia

CS810—Cherry Blossom Time, Washington, D. C.
CS850—Washington, the City Beautiful
CS800—Washington, the Renowned City

Virginia

CS3270—Beautiful Blue Ridge Parkway, Virginia
CS3190—Skyline Caverns, Virginia
CS890—Autumn Artistry in Old Virginia
CS160—Gardens of Old Virginia
CS860—Historic Old Virginia
CS750—Mt. Vernon
CS740—Skyline Drive, Shenandoah National Park
CS180—Williamsburg, Virginia

Florida

CS540—Alligator and Ostrich Farm
CS920—Cypress Gardens, Florida
CS840—Daytona Beach, Florida
CS230—Florida Bait (Luxury Fishing Craft)
CS270—Florida Flowers (Set No. One)
CS280—Florida Flowers (Set No. Two)
CS530—Florida Indians and Villages
CS1020—Flowers, Sunken Gardens, St. Petersburg
CS660—Key West, Florida
CS400—Miami, Florida
CS140—Models, Cypress Gardens, Florida
CS760—Parrot Jungle, Miami
CS960—Rainbow Gardens, Florida
CS410—Rare Bird Farm, Miami
CS820—Ringling Art Museum, Sarasota
CS830—Silver Springs, Florida
CS330—St. Augustine, Florida
CS420—St. Petersburg, Florida
CS1010—Sunken Gardens, St. Petersburg
3060—Colorful Cypress Gardens
3090—Blossom Time at Cypress Gardens
3080—Colorful Key West
2940—Hollywood, Florida
3030—Ft. Lauderdale, Fla. (Waterfront Homes)
3040—Ft. Lauderdale, Fla. (Bahia Mar)
2930—Boca Raton, Fla.
3100—Weekiwanee Springs
3120—Interesting Spots in Florida
3070—Jungle River Cruise
2920—Alligator Wrestling
2960—University of Miami
2900—Vizcaya
3050—Seagrass, Miami
2910—Miami Serpentine
3020—Coral Gables, Fla.
2970—Miami—Waterfront Scenes
2980—Bayfront Park, Miami
2950—Miami, City of Progress
3010—Blimp Over Miami Beach
2990—Fabulous Miami Beach
2890—Famous Miami Beach Hotels
3000—Beach Scenes, Florida's Gold Coast
3110—Florida Gold Coast

Eastern United States, Miscellaneous

CS1000—Abraham Lincoln in Illinois
CS3240—Among the Scenic Great Smokies
CS1730—Autumn Artistry in the Great Smokies
CS460—The Beautiful Ohio (Ohio River Scenes)
CS1740—The Blue Ridge Mountains
CS720—The Great Smoky Mountains
CS1440—Greenfield Village, Dearborn, Michigan
CS1250—Mammoth Onyx Cave, Kentucky
CS100—New Orleans, Louisiana
CS190—Philadelphia, Pennsylvania

Colorado

CS3230—Autumn in Rocky Mountain National Park, Colo.
CS3160—Colorful Colorado in Autumn
CS3320—Colorful Colorado, Rock Formations
CS3250—Mule Creek Garden of the Gods
CS3330—Monument Canyon, Colorado, in Winter
CS3170—Red Mountain Pass in Autumn, Colorado
CS1090—The Beautiful Colorado Rockies
CS1660—Central City, Colorado
CS120—Colorado
CS1260—Denver, the Mile High City
CS1290—Fantastic Garden of the Gods
CS770—Garden of the Gods, Colorado
CS1130—Indian Shrines and Temples, Mesa Verde
CS1120—Mesa Verde National Park
CS470—Rocky Mountain National Park
CS240—Rocky Mountain Ramblings, Colorado
CS1100—Scenic Colorado
CS1770—Scenic Spots of Denver

Texas

CS1700—Big Bend National Park, Texas
CS1680—San Antonio, Texas
CS1830—Scenic San Antonio, Texas

Wyoming

CS10—Grand Teton National Park
CS20—The Spectacular Grand Teton
CS30—Winter Splendor of the Grand Teton
CS990—Yellowstone National Park

New Mexico

CS3200—Autumn Glory in New Mexico
CS3210—Indian Ceremonies, Gallup, N. Mex.
CS520—Santa Fe, New Mexico
CS3290—Scenic Santa Fe, New Mexico

Utah

CS2090—Autumn in Zion Canyon
CS2130—Beauty Spots of Bryce Canyon
CS2700—Bryce Canyon National Park
CS2140—Curious Formations of Bryce Canyon
CS1070—Hoover Dam, Utah
CS2120—Majestic Views of Bryce Canyon
CS2100—Scenic Zion Canyon
CS560—Zion National Park

Arizona

CS3300—Grand Canyon, Colorful Havasupai
CS3260—Grandeur of the Grand Canyon, Arizona
CS3180—Organ Pipe Cactus National Monument, Arizona
CS3220—Saguaro National Monument, Arizona
CS570—Grand Canyon, Arizona
CS580—Grand Canyon National Park
CS1960—Indian Sand Painting, Arizona
CS950—Monument Valley
CS1910—Nature's Miracles of Monument Valley
CS1950—Navajo Indian Life, Arizona
CS2040—Tombstone, Arizona

Washington State

CS2080—Columbia River Highway
CS790—Mt. Rainier National Park
CS2050—Olympic National Park
CS2330—Scenic State of Washington

Oregon

CS2780—Winter Magic at Crater Lake, Oregon
CS780—Crater Lake National Monument
CS2070—Mt. Hood National Park
CS2150—Pictorial Oregon
CS2320—Scenic Coast of Oregon

California

CS1510—Beverly Hills, Calif.
CS610—California Missions (Set No. One)
CS1040—Death Valley, California
CS1050—Ghost Towns and Buildings of Death Valley
CS1180—Historic Old Monterey
CS1350—Hollywood at Night
CS380—Hollywood, Calif.
CS1670—Hollywood Movie Stars' Homes
CS1410—Knott's Berry Farm
CS440—Los Angeles, Calif.
CS2270—Pasadena, Calif.
CS2060—Redwood Highway, Calif.
CS490—San Diego, Calif.
CS1390—San Francisco, Calif.
CS1400—Scenic Spots of San Francisco
CS430—Sequoia National Park
CS1920—Springtime in the Mojave Desert
CS1430—Winter in Yosemite National Park
CS900—Yosemite National Park

Miscellaneous

CS3340—Japan, Land of Color and Beauty
CS3130—Roadside America, No. One
CS3140—Roadside America, No. Two
CS3150—Roadside America, No. Three
CS450—Arkansas Ozarks
CS1370—Badlands National Memorial
CS600—Glacier National Park
CS1380—Las Vegas, Nevada
CS220—Oklahoma
CS1330—Petrified Forest National Monument
CS2180—Cape Town, South Africa
CS150—Colorful Japan
CS110—Festival Time in Japan
CS200—Mexico
CS40—Nassau
CS1640—Tijuana, Mexico
CS1030—Tokyo, Japan

Alaska

CS590—Alaska
CS1780—Alaska, the Unusual
CS1550—Mt. McKinley National Park
CS1570—Scenic Alaska
CS1560—Unique Cabins and Buildings, Alaska

Hawaii

CS2700—Exotic Hawaiian Flowers
CS2660—Happy Hawaiian Islands, Hawaii
CS2690—Happy Hawaiian Islands, Kauai
CS2680—Happy Hawaiian Islands, Maui
CS2680—Happy Hawaiian Islands, Maui
CS2670—Happy Hawaiian Islands, Oahu

U. S. Territories

CS250—Guam, After World War II
CS300—Hawaii
CS1080—Panama Canal
CS1200—San Juan, Puerto Rico
CS340—Scenic Hawaii, Around Honolulu
CS1210—Scenic Puerto Rico

Canada

CS1290—Banff National Park
CS2310—Butchart's Gardens, Victoria, B. C.
CS880—Canada
CS1930—Colorful Canadian Rockies
CS2340—Colorful Gardens, Victoria, B. C.
CS1750—Halifax, N. S.
CS1310—Jasper National Park
CS390—Ottawa, Capital of Canada
CS870—Quebec City, Canada
CS1300—Scenic Beauties of Banff
CS550—Vancouver, B. C.
CS2160—Victoria the Beautiful

Europe

CS1520—Austria
CS1580—Germany
CS1490—Historic and Scenic France
CS2410—Holland
CS1540—Mountains of Switzerland
CS1590—Munich, Bavaria
CS1500—Paris, France
CS2290—The Principality of Monaco
CS1530—Scenic Switzerland

Switzerland

CS2440—Famous Places in Switzerland
CS2420—Majesty of the Matterhorn
CS2430—Swiss Alpine Scenes

France

CS2480—Along the Riviera in France
CS2500—French and Italian Alps
CS2590—Historic and Scenic France
CS2470—Interesting Spots in Scenic France
CS1450—Paris and Versailles
CS2460—Rural France

Germany

CS2580—Among the Bavarian Alps
CS2610—The Fair Land of the Rhine
CS2600—Famous Castles of Germany

Italy

CS2530—Along the Italian Riviera
CS2490—Along the Mediterranean Shore
CS2510—Ancient and Historic Rome
CS2570—Capri
CS2520—Famous Fountains of Rome
CS2550—Florence
CS2540—Fiesta and Points of Interest
CS2390—Romantic and Beautiful Venice
CS2560—Rural Italy
CS2400—Venice

England

CS2370—Beautiful Cathedrals of England
CS2350—London
CS2380—Picturesque and Historic England
CS2360—Rural England

Spain and Portugal

CS2880—Flowers of Sunny Spain
CS2830—Granada, Spain
CS2850—Madrid, Spain
CS2800—Pictorial Portugal
CS2810—Scenic Spots of Spain
CS2790—Scenic Sunny Spain
CS2870—Sevilla, Spain
CS2840—Seville, Spain
CS2820—Sunny Southern Spain
CS2860—Toledo, Spain

Wild Life, Wild Flowers

CS2250—American Water and Wild Fowl
CS170—Desert, Flowers
CS1840—Desert Wild Life, Animals
CS1850—Desert Wild Life, Birds
CS630—Flowers (Set No. 1)
CS640—Flowers (Set No. 2)
CS2260—Ocean Floor Habitat
CS1970—The Scenic Beauty of Sunsets
CS1940—Spring Flowers of the Desert
CS970—Sunsets

Best Sellers 2"x2" SLIDE SETS ON WORLD WAR II

These 2"x2" slide sets each contain twenty (20) regular double frame slides in black and white, each slide is captioned, and each set of twenty is packed in a labeled carton. For everyone with a 2"x2" slide projector—here's an opportunity to get excellent coverage of World War II—at very, very low cost!

Price per set **79c**
All twelve sets, purchased together **\$7.99**
(Allow 6c postage for first slide set, 3c for each additional set.)

Here are the twelve set titles:

- WW1—PEARL HARBOR, JAP ATTACK
- WW2—SAIPAN
- WW3—TARAWA
- WW4—HOLLANDIA
- WW5—GUAM
- WW6—IWO JIMA
- WW7—OKINAWA
- WW8—NORMANDY INVASION
- WW9—INVASION BEACHHEAD
- WW10—PATTON BREAKS OUT
- WW11—INVASION OF SOUTHERN FRANCE
- WW12—THE SEVENTH DRIVES NORTH

WILD LIFE

2"x2" COLOR SLIDE SETS

Eight 2"x2" color slides per set!

Price, per set - - **\$1.49**

Any eight sets..... **\$9.99**

144—AFRICAN BIG GAME

Contains: Lions, elephants, impala, giant bustard, Uganda kob ram, Grant's gazelle and Thompson's gazelle.

143—BIG GAME COUNTRY

Contains: Zebra and topi, bull buffalo, cheetah, bull hippopotamus and black chinoceros.

160—THE CORN SNAKE AND THE MOUSE

Of this unusual set, the photographer, Dr. H. Bernard Bechtel writes: "Snakes are killing and eating mice every day somewhere. I don't often get the ingredients for such pictures, namely: the mouse, the proper light and such a hungry and cooperative snake." The set covers the action from the time the corn snake has coiled around the mouse, until the mouse has been completely swallowed.

87—MOUNTAIN LIONS

Contains: Baby mountain lion (4 slides), two baby mountain lions, three baby mountain lions, mother mountain lion and mother mountain lion with baby. (Formerly Wild Life Set No. Nine.)

161—POISONOUS SNAKES OF THE UNITED STATES

Contains: Northern copperhead, Eastern massasauga, prairie rattlesnake, cottonmouth water moccasin, sidewinder rattlesnake, Western diamondback, black-tailed rattlesnake, Texas coral snake.

175—SNAKES OF THE MIDWEST

Contains: Adult queen snake, Kirtland's water snake, the yellow-bellied king snake, Western ground snake, Western fox snake, blue racer, plains garter snake and bull snake.

174—SNAKES OF NORTHEASTERN UNITED STATES

Contains: Worm snake, ribbon snake, hog-nosed snake, red-bellied snake, an adult and a young pilot black snake, and an adult and a young blacksnake.

130—SNAKES OF THE NORTHEAST

Contains: Northern ring necked snake, smooth green snake, Northern pine snake, milk snake, DeKay's snake, Northern copperhead snake, common garter snake and timber rattlesnake.

131—SNAKES OF THE SOUTHEAST

Contains: Indigo snake, corn snake, blotched chicken snake, four lined chicken snake, Florida pine snake, scarlet king snake, scarlet snake and Eastern diamond backed rattlesnake.

132—SNAKES OF THE SOUTHWEST

Contains: Western coachwhip snake, California striped whip snake, Texas whip snake, Texas glossy snake, California king snake, long nosed snake, Marcy's gartersnake and rock rattlesnake.

159—TYPICAL SNAKES OF THE SOUTH

Contains: Eastern king snake, Eastern mud snake, canebrake rattlesnake, coachwhip snake, Eastern water snake, rough green snake, Southern ground snake, Southern copperhead.

145—WILD ANIMALS OF THE AFRICAN PLAINS

Contains: Giraffe, ostrich, water buck, whitebearded wildebeest, wildebeest and hartbeest.

79—WILD LIFE SET No. One

Contains: Baby porcupine, coyote, big horn sheep, baby blue heron, mule deer buck, cow moose, elk calf and black bear cub.

80—WILD LIFE SET No. Two

Contains: Baby Canada goose, bull moose, coyote pup, black bear, prairie dog, antelope, elk calf and big horn sheep ram.

81—WILD LIFE SET No. Three

Contains: Young horned owls, antelope, mother moose and calf, white footed mouse, prairie dog, bull elk, buffalo and beaver.

82—WILD LIFE SET No. Four

Contains: Elk calf, trumpeter swans, pocket gopher, young red squirrel, pack rat, raccoon, prairie dog family and antelope nursing twins.

83—WILD LIFE SET No. Five

Contains: Baby trumpeter swan, marmot, blue goose, buffalo nursing baby, prairie rattlesnake, grizzly bear cub, coyote howling and mountain toad.

84—WILD LIFE SET No. Six

Contains: Raccoon, mule deer buck, bobcat, wild turkeys, cottontail rabbit, cony or pika, yellow pine chipmunk and elk bulls.

85—WILD LIFE SET No. Seven

Contains: California gull, baby red wing blackbirds, whitetail jack rabbit, bull moose in velvet, bobcat, three antelopes, buffalo portrait and mother elk and calves.

86—WILD LIFE SET No. Eight

Contains: Saxe grouse hens, jumping mouse, broadtail humming bird, desert horned lark, cow moose in winter, buffalo herd with calves, sandhill crane nest and young, grizzly bear cub.

88—WILD LIFE SET No. Ten

Contains: Columbia black tailed deer—doe and fawn (1 slide) and fawn (1 slide), wandering garter snake, skunk, Canada jay or camp robber, mallard duck, sand hill crane and young golden eagle.

89—WILD LIFE SET No. Eleven

Contains: King snake, gila monster, Arizona black tailed jack rabbit, baby stellar sea lion, white-tail deer fawn, female deer fawn, female red wing blackbird, killdeer and eggs, young red-tailed hawk in nest.

90—WILD LIFE SET No. Twelve

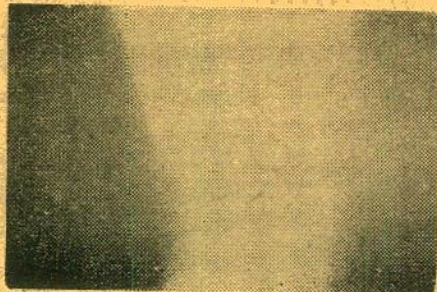
Contains: Desert tortoise, gray fox, desert horned toad, baby cottontail rabbit, mule deer fawn, stellar bull sea lion with harem, ring billed gull in flight and blue jay.

91—WILD LIFE SET No. Thirteen

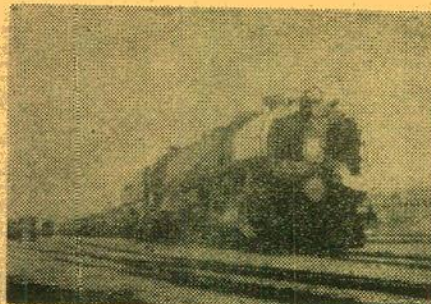
Contains: Young flying squirrel, under, mule cardinal, kangaroo rat, bull snake, green collared lizard, beaver (close-up) and Palmer thrasher.



"TYPICAL SNAKES OF THE SOUTH"



"THE NORTHERN LIGHTS"



"STEAM LOCOMOTIVES IN COLORADO AND WYOMING"



"THE SPANISH-AMERICAN WAR ON LAND AND SEA"

Blackhawk's 2"x2" COLOR SLIDES

(Note that a few sets of the Railroad Slides are in black and white, and are so identified in the individual listings.)

Historical Slides

BATTLES OF THE CIVIL WAR (No. 34, 28 slides)	\$3.98
BRADY PHOTOGRAPHS OF THE CIVIL WAR (No. 30, 24 slides)	\$3.49
CAPTURED GERMAN ARMY PICTURES (No. 12, 22 slides)	\$3.49
DRESS UNIFORMS OF THE U. S. ARMY, 1902-1907 (No. 124, 14 slides)	\$2.19
FORT SUMTER AND CHARLESTON (No. 156, 20 slides)	\$2.98
GETTYSBURG AND MR. LINCOLN (No. 166, 13 slides)	\$1.98
NECK AND NECK TO THE WIRE (No. 157, 20 slides). Currier and Ives Lithographs on Horse Racing	\$2.98
THE 1939 SAN FRANCISCO WORLD'S FAIR AT NIGHT (No. 153, 13 slides)	\$1.98
SO PROUDLY WE HAIL (No. 71, 13 slides)	\$1.98
THE SPANISH-AMERICAN WAR ON LAND AND SEA (No. 146, 16 slides)	\$2.49
UNION GENERALS OF THE CIVIL WAR (No. 69, 8 slides)	\$1.49
U. S. ARMY UNIFORMS FROM THE REVOLUTION TO THE SPANISH-AMERICAN WAR (No. 123, 23 slides)	\$3.49

The Circus

CIRCUS, 1875 (No. 110, 13 slides)	\$1.98
CIRCUS TRAIN—LAST DAYS OF THE BIG TOP (No. 74, 30 slides)	\$4.59

Theatrical Posters

BEHIND THE FOOTLIGHTS—THEATRICAL POSTERS OF THE GASLIGHT ERA (No. 122, 16 slides)	\$2.49
THE WICKED STAGE—THEATRICAL POSTERS OF THE GAY NINETIES (No. 121, 13 slides)	\$1.98

Intermission Slides from Nickelodeon Days

ADJUSTING FILM, SHOW WILL CONTINUE IN A FEW MINUTES (No. 150, 10 slides)	\$1.98
IF ANNOYED WHEN HERE, PLEASE TELL THE MANAGEMENT (No. 151, 14 slides)	\$2.49
ONE MOMENT PLEASE! (No. 76, 17 slides)	\$2.69

Coming Attraction Slides of the Silent Movie Days

COMING SUNDAY (No. 78, 20 slides)	\$2.98
NICKELODEON (No. 77, 14 slides)	\$2.19
PHOTOPLAYS OF 1917 (No. 112, 13 slides)	\$1.98
PHOTOPLAYS OF 1918 (No. 113, 13 slides)	\$1.98
MORE PHOTOPLAYS OF 1918 (No. 141, 13 slides)	\$1.98
PHOTOPLAYS OF 1919 (No. 118, 13 slides)	\$1.98
PHOTOPLAYS OF 1920 (No. 138, 13 slides)	\$1.98
PHOTOPLAYS OF 1921 (No. 114, 13 slides)	\$1.98
PHOTOPLAYS OF 1922 (No. 119, 13 slides)	\$1.98
PHOTOPLAYS OF 1923 (No. 120, 13 slides)	\$1.98
PHOTOPLAYS OF 1924 (No. 139, 13 slides)	\$1.98
PHOTOPLAYS OF 1926 (No. 140, 13 slides)	\$1.98
RAILROAD MOVIES OF THE SILENT ERA (No. 136, 13 slides)	\$1.98
TWO REEL COMEDIES OF THE SILENT ERA (No. 137, 16 slides)	\$2.49

Railroad Slides

ABOARD THE MOJAVE LOCAL (No. 168, 13 slides)	\$1.98
ANTONITO TO SILVERTON ON THE NARROW GAUGE (No. 176, 13 slides)	\$1.98
BALTIMORE AND OHIO 2-8-2s AT NORTH VERNON, INDIANA (No. 148, 13 slides)	\$1.98
BESSEMER AND LAKE ERIE (No. 24, 14 black and white slides)	\$1.49
THE CALIFORNIA ZEPHYR IN FEATHER RIVER CANYON (No. 3a, 20 slides)	\$2.93
CANADIAN NATIONAL STEAM LOCOMOTIVES (No. 169, 16 slides)	\$2.49
CAROLINA SHORT LINES (No. 42, 19 slides)	\$2.98
CHICAGO-TWIN CITIES STREAMLINERS (No. 65, 33 slides)	\$4.98
CIRCUS TRAIN—LAST DAYS OF THE BIG TOP (No. 74, 30 slides)	\$4.59
CIVIL WAR RAILROADS (No. 26, 13 slides)	\$1.98
DONNER PASS ON THE SOUTHERN PACIFIC (No. 128, 16 slides)	\$2.49
EDELSTEIN HILL ON THE SANTA FE (No. 127, 13 slides)	\$1.98
4-8-4s ON THE NORFOLK & WESTERN (No. 172, 13 slides)	\$1.98
GUNNISON BRANCH, RIO GRANDE NARROW GAUGE (No. 180, 11 slides)	\$1.69
THE HIGH SIERRAS FROM A CABOOSE (No. 129, 13 slides)	\$1.98
HORSESHOE CURVE, PENNSYLVANIA RAILROAD (No. 22, 76 black and white slides)	\$5.98
ILLINOIS CENTRAL—STEAM ACROSS THE PRAIRIE (No. 64, 16 slides)	\$2.49

ILLINOIS TERMINAL TROLLEYS (No. 162, 8 slides)	\$1.29
INTERURBANS ON THE ILLINOIS TERMINAL (No. 179, 18 slides)	\$2.89
IOWA ELECTRIC RAILWAYS (No. 117, 20 slides)	\$2.98
KANSAS CITY TERMINAL (No. 73, 18 slides)	\$2.79
NEW YORK CENTRAL STEAM LOCOMOTIVES AT INDIANAPOLIS (No. 125, 13 slides)	\$1.98
NICKEL PLATE 2-8-4s (No. 126, 13 slides)	\$1.98
NORFOLK AND WESTERN (No. 27a, 32 slides)	\$4.98
NORFOLK & WESTERN 4-8-0s (No. 171, 13 slides)	\$1.98
PENNSY STEAM LOCOMOTIVES (No. 109, 13 slides)	\$1.98
RAILROADING DOWN UNDER ON SOUTH AUSTRALIAN RAILWAYS (No. 170, 15 slides)	\$2.49
RAILROADS OF THE OLD DOMINION AND THE MIDDLE SOUTH (No. 28, 27 slides)	\$3.98
RAILROADS U. S. A. (No. 17, 47 slides)	\$6.98
RIO GRANDE NARROW GAUGE (No. 53, 20 slides)	\$2.98
THE ROARIN' ELGIN—THE C., A. & E. (No. 178, 10 slides)	\$1.49
THE ROCK ISLAND—YESTERDAY AND TODAY (No. 116, 35 black and white slides)	\$2.98
ST. LOUIS TERMINAL (No. 147, 20 slides)	\$2.98
THE SANTA FE CHIEFS (No. 40, 30 color slides)	\$3.98
THE SANTA FE—YESTERDAY AND TODAY (No. 23, 57 black and white slides)	\$4.49
SEABOARD STEAM LOCOMOTIVES (No. 115, 56 black and white slides)	\$4.98
STEAM LOCOMOTIVES IN COLORADO AND WYOMING (No. 177, 20 slides)	\$2.98
STEAM LOCOMOTIVES ON THE ILLINOIS CENTRAL (No. 163, 13 slides)	\$1.98
STEAM LOCOMOTIVES ON THE NORFOLK & WESTERN (No. 174, 13 slides)	\$1.98
SOUTHERN RAILWAY STEAM LOCOMOTIVES (No. 65, 60 black and white slides)	\$4.98
TEHACHAPI (No. 167, 20 slides)	\$2.98
VIRGINIAN RAILROAD STEAM LOCOMOTIVES (No. 10, 23 slides)	\$3.79

Travel Slides—North America

ANIMALS OF YELLOWSTONE NATIONAL PARK (No. 66, 30 slides)	\$4.49
ARCHES NATIONAL MONUMENT (No. 62, 12 slides)	\$1.89
ARCHES NATIONAL MONUMENT (No. 95, 8 slides)	\$1.49
AUTUMN AND WINTER IN YELLOWSTONE NATIONAL PARK (No. 67, 12 slides)	\$1.89
AUTUMN IN WYOMING (No. 19, 12 slides)	\$1.89
AUTUMN IN YOSEMITE (No. 134, 17 slides)	\$2.49
AUTUMN'S PAINTBRUSH IN NEW MEXICO (No. 165, 13 slides)	\$1.98
BANFF AND LAKE LOUISE (No. 96, 8 slides)	\$1.49
THE BLUE GRASS STATE, KENTUCKY (No. 31, 18 slides)	\$2.49
BRIGHT LIGHTS OF BROADWAY (No. 135, 26 slides)	\$3.98
BRYCE CANYON NATIONAL PARK (No. 61, 16 slides)	\$2.49
THE CABLE CARS OF SAN FRANCISCO (No. 57, 20 slides)	\$2.98
DEATH VALLEY (No. 97, 8 slides)	\$1.49
FABULOUS FLORIDA (No. 14, 50 slides)	\$6.98
GEYSERS AND HOT SPRINGS OF YELLOWSTONE (No. 68, 30 slides)	\$4.49
THE GRAND CANYON (No. 32, 32 slides)	\$4.49
GRAND CANYON TRAILS (No. 58, 24 slides)	\$3.69
MIGHTY NIAGARA (No. 164, 12 slides)	\$1.89
NEIGHBOR MEXICO (No. 5, 51 slides)	\$6.98
NEW ENGLAND AUTUMN (No. 111, 13 slides)	\$1.98
THE NORTHERN LIGHTS (No. 158, 10 slides)	\$1.49
THE PACIFIC NORTHWEST (No. 15, 35 slides)	\$4.98
THE PANAMA CANAL (No. 43, 19 slides)	\$2.98
PEAKS, PARKS AND PASSES IN COLORADO (No. 59, 24 slides)	\$3.69
SAN FRANCISCO AFTER DARK (No. 107, 15 slides)	\$2.39
SAN FRANCISCO, THE BAY AND THE BRIDGES (No. 108, 20 slides)	\$2.98
SAN FRANCISCO—FISHERMAN'S WHARF (No. 104, 16 slides)	\$2.49
SAN FRANCISCO IN SPRINGTIME (No. 105, 20 slides)	\$2.98
SIGHTSEEING IN SAN FRANCISCO (No. 106, 20 slides)	\$2.98
SKI TIME IN ASPEN (No. 70, 16 slides)	\$2.49
SPRINGTIME IN YOSEMITE (No. 133, 20 slides)	\$2.98
TETON NATIONAL PARK (No. 98, 8 slides)	\$1.49
THIS IS NEW ENGLAND (No. 18, 35 slides)	\$4.69
TRAIL RIDGE ROAD, ROCKY MOUNTAIN NATIONAL PARK (No. 149, 16 slides)	\$2.49
TWO MILES HIGH IN ROCKY MOUNTAIN NATIONAL PARK (No. 72, 20 slides)	\$2.98
WASHINGTON ON THE POTOMAC (No. 29, 31 slides)	\$4.49

YELLOWSTONE—THE GRAND CANYON, FALLS, RIVERS AND LAKE (No. 142, 13 slides)	\$1.98
YOSEMITE NATIONAL PARK (No. 99, 8 slides)	\$1.49
ZION NATIONAL PARK (No. 100, 8 slides)	\$1.49
ZION NATIONAL PARK (No. 60, 19 slides)	\$2.98

Travel Slides—Europe

ANCIENT GREECE TODAY (No. 56, 47 slides)	\$6.98
BELGIUM THE BEAUTIFUL (No. 45, 36 slides)	\$5.49
ENGLAND—TOWN AND COUNTRY (No. 7, 49 slides)	\$5.98
FAIR FRANCE (No. 9, 58 slides)	\$7.98
HOLLAND—HIGH SPOTS IN THE LOWLANDS (No. 44, 42 slides)	\$5.98
ITALY—NAPLES, POMPEII, SORRENTO AND CAPRI (No. 41, 19 slides)	\$2.98
ITALY—ROME, ST. PETER'S AND THE VATICAN (No. 38, 29 slides)	\$3.98
ITALY—VENICE, FLORENCE, PISA AND MILAN (No. 39, 42 slides)	\$5.98
NORWAY, LAND OF THE MIDNIGHT SUN (No. 35, 48 slides)	\$6.98
PICTURESQUE AND PROGRESSIVE DENMARK (No. 36, 48 slides)	\$6.98
PARIS ON THE SEINE (No. 8, 47 slides)	\$6.98
SIGHTSEEING IN LONDON (No. 6, 50 slides)	\$6.98
SKY-HIGH SWITZERLAND (No. 13, 43 slides)	\$5.98
VIKING LAND, SWEDEN (No. 37, 40 slides)	\$5.98

Travel Slides—The Pacific

BALI TODAY (No. 16, 25 slides)	\$3.98
HAWAII—OUR VACATION PARADISE (No. 1, 50 slides)	\$6.98

Travel Slides—The Orient

INDIA—THE LAND AND ITS PEOPLE (No. 75, 36 slides)	\$5.49
JAPAN, THE OLD AND THE NEW (No. 55, 38 slides)	\$5.98
THE SONG OF INDIA (No. 101, 22 slides)	\$3.49
KOREA—SEOUL-CHUNCHON AREA (No. 51, 26 slides)	\$3.98
KOREA—INCHON AREA (No. 52, 20 slides)	\$2.98
KOREA—PUSAN AREA (No. 54, 38 slides)	\$5.98
KOREA—ALONG THE 38th (No. 50, 23 slides)	\$3.49
KOREA—RAILWAYS IN WARTIME (No. 49, 12 slides)	\$1.89

Travel Slides—The Middle East

EGYPT—THE PEOPLE, THE NILE AND SUEZ (No. 46, 24 slides)	\$3.49
EGYPT—ITS ANCIENT WONDERS (No. 47, 31 slides)	\$4.49
EGYPT—MODERN CAIRO AND ALEXANDRIA (No. 48, 25 slides)	\$3.69
ISRAEL, LAND OF THE BIBLE (No. 2, 50 slides)	\$6.98

Wild Life Slides (*)

AFRICAN BIG GAME (No. 144, 8 slides)	\$1.49
BIG GAME COUNTRY (No. 143, 8 slides)	\$1.49
THE CORN SNAKE AND THE MOUSE (No. 160, 8 slides)	\$1.49
MOUNTAIN LIONS (No. 87, 8 slides)	\$1.49
POISONOUS SNAKES OF THE UNITED STATES (No. 161, 8 slides)	\$1.49
SNAKES OF THE MIDWEST (No. 175, 8 slides)	\$1.49
SNAKES OF THE NORTHEAST (No. 130, 8 slides)	\$1.49
SNAKES OF NORTHEASTERN UNITED STATES (No. 174, 8 slides)	\$1.49
SNAKES OF THE SOUTHEAST (No. 131, 8 slides)	\$1.49
SNAKES OF THE SOUTHWEST (No. 132, 8 slides)	\$1.49
TYPICAL SNAKES OF THE SOUTH (No. 159, 8 slides)	\$1.49
WILD ANIMALS OF THE AFRICAN PLAINS (No. 145, 8 slides)	\$1.49
WILD LIFE SET No. One (No. 79, 8 slides)	\$1.49
WILD LIFE SET No. Two (No. 80, 8 slides)	\$1.49
WILD LIFE SET No. Three (No. 81, 8 slides)	\$1.49
WILD LIFE SET No. Four (No. 82, 8 slides)	\$1.49
WILD LIFE SET No. Five (No. 83, 8 slides)	\$1.49
WILD LIFE SET No. Six (No. 84, 8 slides)	\$1.49
WILD LIFE SET No. Seven (No. 85, 8 slides)	\$1.49
WILD LIFE SET No. Eight (No. 86, 8 slides)	\$1.49
WILD LIFE SET No. Ten (No. 88, 8 slides)	\$1.49
WILD LIFE SET No. Eleven (No. 89, 8 slides)	\$1.49
WILD LIFE SET No. Twelve (No. 90, 8 slides)	\$1.49
WILD LIFE SET No. Thirteen (No. 91, 8 slides)	\$1.49

Wild Flower Slides (*)

CALIFORNIA WILD FLOWER FIELDS (No. 152, 8 slides)	\$1.49
WILD FLOWER SET No. One (No. 92, 8 slides)	\$1.49
WILD FLOWER SET No. Two (No. 93, 8 slides)	\$1.49
WILD FLOWER SET No. Three (No. 94, 8 slides)	\$1.49

(*) Any eight Wild Life or Wild Flower slide sets purchased together at one time, \$9.99



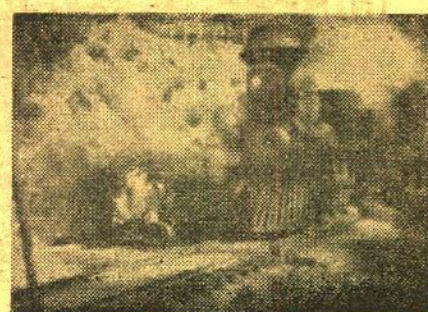
"THE FIRST GLIDDEN TOUR, 1905"



"FOLLIES, FOIBLES AND FASHIONS, 1903-1905"



"OLD JERUSALEM AND NEW ISRAEL"



"FAMOUS TRAINS OF WESTERN RAILROADS, 1897-1903"

BLACKHAWK'S 8mm. movies IN B&W

MACK SENNETT-KEYSTONE COMEDIES

BARNEY OLDFIELD'S RACE FOR A LIFE with Mabel Normand, Ford Sterling, Mack Sennett and Barney Oldfield (150-feet), pp. 12c \$ 4.49

BECAUSE HE LOVED HER with Sam Bernard, Mae Busch, Ford Sterling and The Keystone Kops (300-feet), pp. 18c \$ 8.98

A CLEVER DUMMY with Ben Turpin (300-feet), pp. 18c \$ 8.98

HER DRAMATIC DEBUT with Mabel Normand, Fatty Arbuckle and Mack Sennett (150-feet), pp. 12c \$ 4.49

HIS BITTER PILL with Mack Swain (300-feet), pp. 18c \$ 8.98

LEADING LIZZIE ASTRAY with Fatty Arbuckle (150-feet), pp. 12c \$ 4.49

TEDDY AT THE THROTTLE with Gloria Swanson, Wallace Beery, Bobby Vernon (350-feet), pp. 18c \$ 9.98

WIFE AND AUTO TROUBLE with Willie Collier, Mae Busch and The Keystone Kops (200-feet), pp. 12c \$ 4.98

MACK SENNETT COMEDIES

ALL NIGHT LONG with Harry Langdon (300-feet), pp. 18c \$ 8.98

BOOBS IN THE WOOD with Harry Langdon (300-feet), pp. 18c \$ 8.98

CIRCUS TODAY with Billy Bevan, Madeline Hurlock (300-feet), pp. 18c \$ 8.98

A HAREM KNIGHT with Ben Turpin and Madeline Hurlock (300-feet), pp. 18c \$ 8.98

SUPER-HOOPER-DYNE LIZZIES with Billy Bevan (300-feet), pp. 18c \$ 8.98

YUKON JAKE with Ben Turpin (300-feet), pp. 18c \$ 8.98

HAL ROACH COMEDIES

THE CAKE EATER with Will Rogers (300-feet), pp. 18c \$ 8.98

CRAZY LIKE A FOX with Charley Chase (300-feet), pp. 18c \$ 8.98

CHARLIE CHAPLIN COMEDIES

THE CURE (350-feet), pp. 18c \$ 9.98

THE FLOORWALKER (350-feet), pp. 18c \$ 9.98

GETTING ACQUAINTED (150-feet), pp. 12c \$ 4.49

HIS NEW PROFESSION (150-feet), pp. 12c \$ 4.49

MAKING A LIVING (150-feet), pp. 12c \$ 4.49

THE NEW JANITOR (150-feet), pp. 12c \$ 4.49

THE PAWN SHOP (350-feet), pp. 18c \$ 9.98

POLICE (300-feet), pp. 18c \$ 9.98

THE ROUNDERS (150-feet), pp. 12c \$ 4.49

TANGO TANGLES (150-feet), pp. 12c \$ 4.49

THE VAGABOND (300-feet), pp. 18c \$ 9.98

LAUREL AND HARDY COMEDIES

ANGORA LOVE (325-feet), pp. 18c \$ 8.98

BIG BUSINESS (300-feet), pp. 18c \$ 8.98

DOUBLE WHOOP (300-feet), pp. 18c (also features Jean Harlow) \$ 8.98

GOOFS OF THE GOLDEN WEST (500-feet), pp. 23c \$12.98

THE LIVE GHOST (500-feet), pp. 23c \$12.98

THE MUSIC BOX (550-feet), pp. 27c \$15.98

NIGHT OWLS (325-feet), pp. 18c \$ 8.98

SCRAM (300-feet), pp. 18c \$ 8.98

THEM THAR HILLS (450-feet), pp. 23c \$12.98

TOWED IN A HOLE (500-feet), pp. 23c \$12.98

TIT FOR TAT (400-feet), pp. 18c \$ 9.98

TWO TARS (300-feet), pp. 23c \$12.98

TWO ON A TEAR (550-feet), pp. 27c \$15.98

WE FAW DOWN (325-feet), pp. 18c \$ 8.98

WRONG AGAIN (300-feet), pp. 18c \$ 8.98

COLLECTORS' ITEMS

THE AMERICAN with Douglas Fairbanks (825-feet), pp. 27c \$19.98

BATHING GIRLS—THEN AND NOW (150-feet), pp. 12c \$ 4.49

CORONATION DAYS, 1907 and 1911, AND OTHER PICTURES (150-feet), pp. 12c \$ 4.49

DAYS OF MCKINLEY, BRYAN AND TEDDY ROOSEVELT (150-feet), pp. 12c \$ 4.49

AN EDISON ALBUM (175-feet), pp. 12c \$ 4.98

THE FIRST 500-MILE INDIANAPOLIS SPEEDWAY RACE, 1911 (150-feet), pp. 12c \$ 4.49

THE FIRST GLIDDEN TOUR, 1905 (175-feet), pp. 12c \$ 5.98

FLIVVERING with Victor Moore (150-feet), pp. 12c \$ 4.49

THE FOILED KLOPPMENT, a chapter from the famous Thalhouser serial of 1914, "Zudora", with James Cruze and Marguerite Snow (200-feet), pp. 12c \$ 4.98

FOLLIES, FOIBLES AND FASHIONS, 1903-1905, Cheesecake of 1904, (175-feet), pp. 12c \$ 5.98

THE RETURN OF DRAW EGAN with Wm. S. Hart, Margery Wilson, Robert McKim (750-feet), pp. 27c \$19.98

THE RUINS OF SAN FRANCISCO, 1906 (100-feet), pp. 12c \$ 3.99

THE SAGA OF WILLIAM S. HART (750-feet), pp. 27c \$19.98

THE UNWELCOME GUEST with Mary Pickford (275-feet), pp. 18c \$ 8.98

TOMMY BURNS VS. BILL SQUIRES, 1907 (125-feet), pp. 12c \$ 4.49

CHAPTERS FROM THE ORIGINAL "PERILS OF PAULINE" with PEARL WHITE

DEADLY TURNING (200-feet), pp. 12c \$ 4.98

THE PIRATE'S TREASURE (250-feet), pp. 18c \$ 7.98

FAIRY TALES

(Live action—not cartoons or puppets)

BEAUTY AND THE BEAST (150-feet), pp. 12c \$ 4.49

CINDERELLA (150-feet), pp. 12c \$ 4.49

JACK AND THE BEAN STALK (150-feet), pp. 12c \$ 4.49

LITTLE RED RIDING HOOD (150-feet), pp. 12c \$ 4.49

THE MAGIC LAMP (150-feet), pp. 12c \$ 4.49

RAPUNZEL (150-feet), pp. 12c \$ 4.49

RUMPLESTILTSKIN (150-feet), pp. 12c \$ 4.49

SNOW WHITE AND ROSE RED (150-feet), pp. 12c \$ 4.49

CHILDREN'S FILMS

THE CIRCUS WAKES UP (150-feet), pp. 12c \$ 4.49

HEROES OF THE ALAMO (150-feet), pp. 12c \$ 4.49

THE LITTLEST ANGEL, Coronet Films famous Christmas subject, (300-feet, black and white), pp. 18c \$ 8.98

THE LITTLEST ANGEL (300-feet, color), pp. 18c \$29.98

DESCRIPTIVE LISTINGS of these

BLACKHAWK'S 8mm. FILMS and 2"x2" COLOR SLIDES

appeared in

BLACKHAWK'S BARGAIN BULLETIN

No. 80

issued in mid-February and will appear again in

BLACKHAWK'S BARGAIN BULLETIN

No. 83

to be issued in late April

BLACKHAWK RAILROAD FILMS

AT SHERMAN HILL ON THE UNION PACIFIC (150-feet), pp. 12c \$ 4.49

THE BLOCK SIGNAL with Ralph Lewis, Jean Arthur and Hugh Allen (800-feet), pp. 27c \$19.98

THE CALIFORNIA ZEPHYR (150-feet), pp. 12c \$ 4.49

CLEAR IRON—THE STORY OF THE RDC (150-feet), pp. 12c \$ 4.49

FAMOUS TRAINS OF WESTERN RAILROADS, 1897-1903 (150-feet), pp. 12c \$ 5.98

THE GEORGETOWN LOOP, 1903 (110-feet), pp. 12c \$ 4.49

THE GREAT TRAIN ROBBERY, 1903 (150-feet), pp. 12c \$ 4.49

HIGH SPEED FREIGHT ON THE NICKEL PLATE (150-feet), pp. 12c \$ 4.49

THE HOLD-UP OF THE ROCKY MOUNTAIN EXPRESS, 1906 (150-feet), pp. 12c \$ 4.98

THE LONEDALE OPERATOR (200-feet), pp. 12c \$ 4.98

NIGHT MAIL (300-feet), pp. 18c \$ 8.98

THE OLYMPIAN HIAWATHA (150-feet), pp. 12c \$ 4.49

ON THE BALTIMORE AND OHIO (150-feet), pp. 12c \$ 4.49

ON THE CANADIAN NATIONAL (150-feet), pp. 12c \$ 4.49

ON THE DELAWARE AND HUDSON (150-feet), pp. 12c \$ 4.49

ON THE EAST BROAD TOP (150-feet), pp. 12c \$ 4.49

ON THE NORFOLK AND WESTERN (150-feet), pp. 12c \$ 4.49

ON THE PENNSYLVANIA (150-feet), pp. 12c \$ 4.49

THE OPEN TRACK with Helen Holmes (300-feet), pp. 18c \$ 8.98

THE PAY TRAIN with Helen Holmes (150-feet), pp. 12c \$ 4.49

THE PRESIDENT'S SPECIAL, 1914 (300-feet), pp. 18c \$ 8.98

THE SUPER CHIEF (150-feet), pp. 12c \$ 4.49

TIME FREIGHT TO TIDEWATER (300-feet), pp. 18c \$ 8.98

WESTERN PACIFIC FAST FREIGHT (150-feet), pp. 12c \$ 4.49

WHEELS A-ROLLING (300-feet), pp. 18c \$ 8.98

The following group of railroad films do not have text titles, but are accompanied by printed sheets of text or narration.

AT THE HUB OF THE BURLINGTON (100-feet), pp. 12c \$ 3.99

THE CHIEFS OF THE SANTA FE (100-feet), pp. 12c \$ 3.99

DONNER PASS (100-feet), pp. 12c \$ 3.99

SOUTHERN PACIFIC—FROM SAN FRANCISCO TO ROSAVILLE (100-feet), pp. 12c \$ 3.99

SOUTHERN PACIFIC STEAM LOCOMOTIVES (100-feet), pp. 12c \$ 3.99

SHIPS AND BOATS

THE QUEEN ELIZABETH (150-feet), pp. 12c \$ 4.49

SUPERLINER UNITED STATES (300-feet), pp. 18c \$ 8.98

TOWBOAT ON THE RIVER (150-feet), pp. 12c \$ 4.49

AVIATION FILMS

AIRPOWER IN TRANSITION (150-feet), pp. 12c \$ 4.49

FROM THE FIRST AIR MAIL TO THE DC-7 (300-feet), pp. 18c \$ 8.98

UNITED FLIGHT 608 (300-feet), pp. 18c \$ 8.98

BIBLE STORIES

ABRAHAM'S SACRIFICE (300-feet), pp. 18c \$ 8.98

THE BIRTH OF MOSES (300-feet), pp. 18c \$ 8.98

THE GOOD SAMARITAN (175-feet), pp. 12c \$ 4.98

MY BELOVED SON (300-feet), pp. 18c \$ 8.98

THE NATIVITY OF OUR LORD (175-feet), pp. 12c \$ 4.98

THE NATIVITY OF OUR LORD (175-feet in color), pp. 12c \$19.98

THE PARABLE OF THE LOST SHEEP (300-feet), pp. 18c \$ 8.98

THE SAVIOUR IS BORN (300-feet), pp. 18c \$ 8.98

THE HOLY LAND

GALILEE, LAND OF JESUS AND HIS DISCIPLES (150-feet), pp. 12c \$ 4.49

NAZARETH, THE TOWN WHERE JESUS LIVED (150-feet), pp. 12c \$ 4.49

OLD JERUSALEM AND NEW ISRAEL (150-feet), pp. 12c \$ 4.49

VACATIONLAND MOVIES

BELGIUM, THE LAND AND ITS PEOPLE (150-feet), pp. 12c \$ 4.49

THE DEMOCRATIC KINGDOM OF DENMARK (150-feet), pp. 12c \$ 4.49

DOWN MEXICO WAY (150-feet), pp. 12c \$ 4.49

ELIZABETH'S ENGLAND (150-feet), pp. 12c \$ 4.49

ENCHANTING SPAIN (150-feet), pp. 12c \$ 4.49

FLORIDA'S SILVER SPRINGS (300-feet), pp. 18c \$ 8.98

FOOTLOOSE IN FRANCE (150-feet), pp. 12c \$ 4.49

GLACIER NATIONAL PARK (150-feet), pp. 12c \$ 4.49

GRAND CANYON NATIONAL PARK (300-feet), pp. 18c \$ 8.98

HISTORIC ST. PAUL'S (150-feet), pp. 12c \$ 4.49

HAWAII, PACIFIC PARADISE (150-feet), pp. 12c \$ 4.49

HOLIDAY IN FLORIDA (150-feet), pp. 12c \$ 4.49

HOLLAND AND THE DUTCH (150-feet), pp. 12c \$ 4.49

INDIAN DANCES OF THE AMERICAN SOUTHWEST (150-feet), pp. 12c \$ 4.49

ITALY'S FABULOUS CITIES (150-feet), pp. 12c \$ 4.49

LAND OF THE NILE (150-feet), pp. 12c \$ 4.49

LONDON, LARGEST CITY ON EARTH (150-feet), pp. 12c \$ 4.49

NEW YORK HOLIDAY (150-feet), pp. 12c \$ 4.49

NORWAY AND THE NORWEGIANS (150-feet), pp. 12c \$ 4.49

PANAMA—THE REPUBLIC AND THE CANAL (150-feet), pp. 12c \$ 4.49

THE PHILIPPINES REVISITED (150-feet), pp. 12c \$ 4.49

THE STORYBOOK LAND OF INDIA (150-feet), pp. 12c \$ 4.49

SWEDEN, LAND OF THE VIKINGS (150-feet), pp. 12c \$ 4.49

SWINGING THROUGH SWITZERLAND (150-feet), pp. 12c \$ 4.49

WEST GERMANY AND THE RHINELAND (150-feet), pp. 12c \$ 4.49

The following group of vacationland movies do not have text titles, but are accompanied by printed sheets of text or narration.

SAN FRANCISCO'S CABLE CARS (100-feet), pp. 12c \$ 3.99

YOSEMITE IN THE SPRING (100-feet), pp. 12c \$ 3.99

WORLD WAR II AND THE KOREAN WAR

AIR SIEGE AT PLOESTI (150-feet), pp. 12c \$ 4.49

BURMA VICTORY (300-feet), pp. 18c \$ 8.98

FLYING BOAT VS. GERMAN SEA RAIDER (300-feet), pp. 18c \$ 8.98

KOREA'S FIRST FORTY DAYS (150-feet), pp. 12c \$ 4.49

TARGET FOR TONIGHT (300-feet), pp. 18c \$ 8.98

"THE TRUE GLORY"

General Eisenhower Called It, "Crusade in Europe"

PRELUDE TO INVASION (300-feet), pp. 18c \$ 8.98

D-DAY (300-feet), pp. 18c \$ 8.98

THE BATTLE OF THE BEACHEHEAD (300-feet), pp. 18c \$ 8.98

THE LIBERATION OF PARIS (300-feet), pp. 18c \$ 8.98

THE PUSH TO THE GERMAN FRONTIER (300-feet), pp. 18c \$ 8.98

THE BATTLE OF THE BULGE (300-feet), pp. 18c \$ 8.98

FINAL VICTORY (300-feet), pp. 18c \$ 8.98

All of the above seven chapters of "The True Glory" purchased together at one time, pp. 35c \$57.98

"VICTORY IN NORTH AFRICA"

THE BATTLE OF EL ALAMEIN (450-feet), pp. 23c \$12.98

PREPARATIONS FOR INVASION (300-feet), pp. 18c \$ 8.98

LANDING IN NORTH AFRICA (300-feet), pp. 18c \$ 8.98

THE WINTER MONTHS (300-feet), pp. 18c \$ 8.98

THE VICTORIOUS SPRING CAMPAIGN (300-feet), pp. 18c \$ 8.98

All of the above five chapters of "Victory in North Africa" purchased together at one time, pp. 31c \$44.98

WILD LIFE AND ADVENTURE FILMS

BIG GAME ANIMALS OF KRUGER NATIONAL PARK (300-feet), pp. 18c \$ 8.98

BIRTH OF A FLORIDA KEY (150-feet), pp. 12c \$ 4.49

BLUE GEESSE (150-feet), pp. 12c \$ 4.49

BLUE WARRIORS OF THE PACIFIC (150-feet), pp. 12c \$ 4.49

BUFFALO LORE (150-feet), pp. 12c \$ 4.49

CHANNEL BASS AND STRIPERS (150-feet), pp. 12c \$ 4.49

DIANA IN AFRICA (150-feet), pp. 12c \$ 4.49

ELEPHANT HUNT (150-feet), pp. 12c \$ 4.49

FUR AND FEATHERS IN ALASKA (150-feet), pp. 12c \$ 4.49

THE GREAT GAME OF FISHING (150-feet), pp. 12c \$ 4.49

KENAI BIG GAME (150-feet), pp. 12c \$ 4.49

LIZARDS AND THE GILA MONSTER (100-feet), pp. 12c \$ 3.99

MAN-TAMERS OF MEXICO (150-feet), pp. 12c \$ 4.49

PHEASANT FEVER (150-feet), pp. 12c \$ 4.49

SALT WATER WONDERLAND (150-feet), pp. 12c \$ 4.49

THE SCORPION AND THE TRAP-DOOR SPIDER (100-feet), pp. 12c \$ 3.99

SHARK ON THE LINE (150-feet), pp. 12c \$ 4.49

SNAKES OF THE COLORADO DESERT (150-feet), pp. 12c \$ 4.49

STALKING THE ROYAL MOOSE (150-feet), pp. 12c \$ 4.49

THRILL RIVER (150-feet), pp. 12c \$ 4.49

UNDERWATER ADVENTURE (150-feet), pp. 12c \$ 4.49

UNDERWATER SPEARFISHING IN THE CARIBBEAN (150-feet), pp. 12c \$ 4.49

WILD FOWL IN SLOW MOTION (150-feet), pp. 12c \$ 4.49

SPORT AND ADVENTURE

BIRTH OF A VOLCANO (150-feet), pp. 12c \$ 4.49

DEATH IN THE ARENA (150-feet), pp. 12c \$ 4.49

FROGMEN, THE UNDERWATER EXPLORERS (150-feet), pp. 12c \$ 4.49

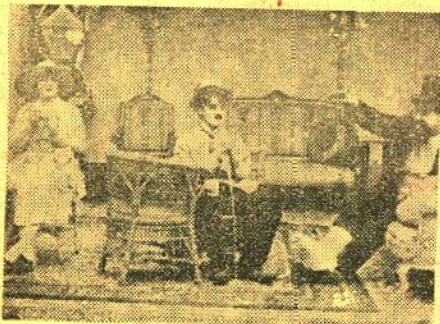
GIANTS AND DWARFS OF THE BELGIAN CONGO (150-feet), pp. 12c \$ 4.49

LIPSTICK AND DYNAMITE (150-feet), pp. 12c \$4.49

SKI SAFARI (150-feet), pp. 12c \$ 4.49

SKIING DOWN THE SWISS ALPS (150-feet), pp. 12c \$ 4.49

TAHITI, PARADISE ON EARTH (300-feet), pp. 18c \$ 8.98



"THE CURE"



"TAHITI, PARADISE ON EARTH"



"BIG GAME ANIMALS OF KRUGER NATIONAL PARK"



"DOUBLE WHOOP"

A FINE SPRING SELECTION OF USED 16mm. SOUND FILMS PRINTS OF ALL SUBJECTS IN THIS GROUP ARE AVAILABLE IN QUANTITY

(Allow 14c postage for first print—10c postage for each additional print selected from this group.)

Around The World In New York

(500-feet) The "old world" culture and customs of the many national groups in the population of New York City are contrasted with the interests and games of the completely assimilated younger generation.

\$12.95

Balzac

(800-feet) A film biography of the famed French novelist, Honore de Balzac (1799-1850), using contemporary pictures, portraits and statues. This film, written by Jean Vidal, constitutes one of the first attempts to use film technique in the fields of history and literary criticism.

\$9.99

Barefoot Killer

(450-feet) A story in the adventure series, "Tropic Hazard", set in the West Indies. Captain Art Crimmins is the thrill-loving skipper of the ship "The Traveler", and the film involves a chase to catch an unseen killer; tell-tale footprints in the island sands, and a horde of natives who were out to seek revenge for a murder.

\$7.77

Biography Of A Fish

(350-feet) The story of the male stickle-back fish and the unusual life he leads as father and part time "mother".

\$5.55

Blue Geese

(350-feet) This excellent picture of a difficult subject includes several spectacular kills, shown here in slow motion. Van Campen Heilner has a reputation for making fine sport shorts, but he has certainly excelled himself in this one.

\$9.95

Camping Education

(600-feet) An interesting March of Time production which tells of the need for outdoor education in America, and shows how teachers, school administration and youth leaders are trained at Life's national camps.

\$12.22

Cello Concert

(350-feet) Leonard Rose, renowned cellist, presents a program of selections by composers Haydn, Schumann and Bach.

\$5.55

Channel Bass and Stripers

(350-feet) From Montauk Point to Cape Hatteras, champion surf-casters fight champions of the surf. The picture also includes the fishin'est dog in the Carolinas, who certainly knows the difference between a good catch and a bad one.

\$19.99

Charles Laughton No. 15

(400-feet) An old French Minstrel Tale which was told more than 700 years ago by professional story tellers, is this one of "The Divided Horsecloth" which is read by Charles Laughton. The story is a parable concerning a son's lack of concern for his father and the brave witness and open remonstrance of a child which changed the son's feelings.

\$7.77

Coolidge Quartet

(300-feet) Two popular classics are played by the Coolidge Quartet, a string ensemble. Presented are "Andante from String Quartet in E Flat Major" by Carl Von Dittersdorf, and the "Fugue" from Beethoven's "Quartet in C Major, Opus 59, No. 3".

\$6.66

Cuban Game Cocks

(550-feet) Filmed in Havana, Cuba, one of the few countries where cock fighting is still legal. The various steps followed in teaching game cocks the technique of battle are pictured in detail.

\$9.99

Die Fledermaus

(500-feet) Consists of three parts of the well-known "Die Fledermaus" by Johann Strauss—The Overture, The Waltz and The Polka.

\$9.99

"1848"

(750-feet) Depicts the period of France's third revolution and the election of Louis Napoleon as president of the Second Republic by employing the engraving and etchings of famous artists such as Daumier, Gavarny and others of the period.

\$12.22

Escape In Canada

(300-feet) Shows vast Canadian wilderness areas which provide campers and sportsmen with an escape from modern civilization.

\$9.95

Fantastic Atom

(475-feet) An informative film story of various facts of the atom, such as what atomic energy is, and how it is released; the unveiling of the first atomic cannon; films of atom bomb test on houses; technicians checking air-born dust for radiation; and pictures taken at the National Atomic Laboratory in Oak Ridge, Tenn., where scientists are studying the possibilities of atomic radiation.

\$12.22

Fight For Better Schools

(800-feet) Dealing with a timely subject, this March of Time film shows how interested citizens like those of Arlington County, Virginia, are able by working together to effect legislation and revitalize the public schools. Also deals with the struggle to improve educational facilities in other localities.

\$11.11

Film Communique No. Three

(750-feet) A film made during World War II specially to show the civilian population of America various aspects of the European theater. Shows LST's putting men ashore under fire in Sicily; a military religious service on Guadalcanal; assembly of U. S. railroad equipment for shipment overseas; P-47's blasting Nazi fighter planes, and a paratroop attack on Lae, New Guinea.

\$9.95

Film Communique No. Six

(600-feet) Vivid scenes from the taking of Cape Gloucester and Arawa on New Britain Island. Piper Cubs directing and checking on artillery fire—a B-24 helping rescue a stranded Liberty ship—and the portable fuel lines used to carry vital fuel from Italian ports to the front lines.

\$9.95

Fish Is Food

(350-feet) A pictorial story of how the endless resources of oceans, rivers and streams provide an abundance of fish to form a basic food.

\$4.44

Flashing Figures

(300-feet) Exclusive sports coverage of female sports champions in action. You'll enjoy seeing the flying frauleins, girls' football teams and graceful bathing beauties.

\$9.95

Flying Saucers Mystery

(400-feet) Gives reports from people who have seen foreign objects in the sky and also the theories of experts. After many years of study, Flying Saucers are still a mystery, although it has been officially reported that they apparently do exist.

\$14.44

French Tapestries Visit America

(900-feet) Pictures the five centuries of magnificent tapestries loaned by the French government to the United States for exhibition in the Metropolitan Museum of Art and the Art Institute of Chicago in 1947. One views these magnificent creations as narration explains their theme against an early French musical background.

\$9.99

Fur and Feathers

(300-feet). This picture opens with shots of a boat moving up the Inland Passage from Vancouver to Alaska. There are sequences showing black and brown bear, flocks of geese, duck and sand-pipers and also excellent scenic shots of glaciers and icebergs.

\$9.95

Grand Canyon

(300-feet) The camera roams through one of America's most beautiful localities and shows the grandeur of the rim and valleys of the gigantic chasm, the Grand Canyon.

\$9.95

Great Northern Tackle Busters

(300-feet) The exciting sport of fishing for pike in the Lake Nipigon region of Ontario, Canada. The fighting spirit and rough-neck tactics of the enormous fish test the angler's tackle and skill to the utmost. Expert handling of bait casting is featured.

\$9.95

Hawaii

(300-feet) Enjoy a camera tour to the colorful vacation city of Honolulu and other picturesque spots in the beautiful Hawaiian Islands. Climb to Kilauea's crater with its awe-inspiring rivers of fire, and thrill to the grace and skill of the natives as they demonstrate surf sports.

\$9.95

Headline History In Sports--1953

(450-feet) Exciting and record-breaking highlights in every field of sports during 1953 are featured in this fast moving film. Includes shots of basketball, the Kentucky Derby, Ben Hogan's capture of the National Open Golf Tournament, the New York Yankee's fifth straight World Series victory, and action-packed shots of football games, skiing, tobogganing, tennis matches, track and swimming events.

\$9.99

Headline History News--1950

(900-feet) A concise and interesting documentary of names and events which headlined the news during 1950, with emphasis on the factors preceding the Korean War, attempts to unify North and South Korea, the UN Security Council decision to halt the aggression, and the United States' part in the war. Also includes sporting events of the year—the trial of Alger Hiss—the five-week strike of coal miners—the beginning of Senator Joseph McCarthy's investigation of communistic activities—and other memorable events.

\$12.22

Horses

(500-feet) "Four-legged G. I.s" take the limelight in this film photographed in the rolling grassy hill country of southern California where the United States Government maintains a magnificent ranch where horses are bred and raised. The picture deals with the various breeds, an exhibition of the care and training of the animals, and the efforts of the government specialists to keep up the standards of the best of the breeds.

\$14.95

How To Waltz

(450-feet) A program of melodious entertainment as the Vienna Choir Boys sing several songs of Johann Strauss. Josef Strauss and others. While the boys sing, children interpret the music with ballroom dancing.

\$9.99

Humboldt County Fair

(325-feet) Join with the folks of Humboldt county, rich dairy, lumber and agricultural region deep in the heart of California's redwood forest, in having a really old-fashioned good time at the county's annual fair. Share in all the excitement of mid-way entertainment—the livestock judging show—the horseracing—and the unusual salmon derby.

\$6.95

Indian Canoeemen

(300-feet) In northern Quebec Province, Canada, nomadic Indians still live like their early ancestors. This film shows two men of the Tete de Boule tribe leaving a Hudson Bay Company post with supplies which they take by canoe to their family encampment. On the way they have unusual encounters with animals and birds, and particular attention is given to the expert technique of these Indians in paddling, running rapids, portaging heavy loads, fishing, and making overnight canoe trips.

\$9.95

Indian Hunters

(300-feet) In this film, the Indian hunters are shown traveling in a birch bark canoe, living off the country as they proceed northward in their hunting. Duck, partridge, speckled trout and great northern pike provide their rations, and they stalk moose and black bear in the fresh and plentiful hunting ground which they discover.

\$9.95

Invitation To Music

(525-feet) Shows the preparations for the annual May Music Festival in Florence, Italy, including a dress rehearsal of the opera, "Il Trovatore", routines by the ballet company of the Royal Opera House of Rome, a string quartet practicing a Mozart piece, and a chorus rehearsing a Verdi classic.

\$14.44

Johnny Learns His Manners

(625-feet) A narrated story, illustrated on an artist's drawing board, of a little boy who is untidy, ill-mannered and selfish, and who is turned into a pig until his "Goodself" conquers his "Badself".

\$29.95

Juvenile Jubilee

(275-feet) A gay musical program presented by "The Collegians", Kay Lorraine and Merle Pitts orchestra. The tunes are "I Don't Want To Walk Without You", "On To Victory" and "I Don't Want To Set the World On Fire".

\$5.55

A Lad And A Lamp

(600-feet) The kids of "Our Gang" are seen in a comical interpretation of the old story, "Aladdin of the Wonderful Lamp".

\$22.22

The Last Word

(450-feet) The "eternal triangle" with a surprise ending is the theme for this dramatic story, one of the "Meet the Victim" series. Starring are Arnold White-Mann, Joselyn Lavin, Irene Carter and Ed Finnegan.

\$9.99

The Las Vegas Hellorado

(350-feet) "Whoop it up" with hundreds of frolickers as the romantic past of the old west is brought to life in one of the last frontier towns—Las Vegas, Nevada. This modern vacation spot assumes the look of 1850 for the festivities, and the film covers all the merry making events and special activities which feature the "Hellorado" Days.

\$9.99

Legacy Of Paper

(550-feet) The ending provides the element of surprise and drama in this story of a young bank teller, guilty of embezzling, whose good luck in a card game and bad luck in choice of friends, leads to disaster. A lottery number printed in a newspaper and pieces of paper torn into dollar-bill size are the most important props in the play.

\$9.99

Life Cycle Of The Mosquito

(400-feet) A film describing the life cycle, structure and the feeding habits of the mosquito.

\$9.99

Life Saving

(600-feet) Shows types of life saving, methods of approach, carries, releases and artificial respiration.

\$14.95

Little Show No. 513

(500-feet) An intriguing story of how a murderer's absent-mindedness and a pet kitten were the only flaws in a plan for a perfect crime.

\$8.88

The Living Plant

(250-feet) Plants, like animals, defend themselves against their enemies and compete with each other. Time-lapse photography shows the living plant as it reaches maturity, and the blossom prepares for the birth of the seed.

\$9.99

Los Angeles County Fair At Pomona

(275-feet) A visit to Pomona, California, where 400 beautifully landscaped acres enshrine a mighty panorama of agricultural and industrial exhibitions and thousands of Americans enjoying a real old-fashioned county fair.

\$7.95

Madcap Melee

(400-feet) Features wrestling matches between Jose Sevilla of Mexico and K. O. Koverley of Yugoslavia, and Jules Strongham and Hardy Kruskamp, both of the United States.

\$7.77

Man--One Family

(550-feet) A refutation of the theory of a master race, particularly as set forth in Hitler's book "Mein Kampf", the film breaks down the common and persistent belief that there is such a thing as racial distinction. This film has been translated into 16 languages and has been shown in all the liberated countries in Europe.

\$8.88

Marriage And Divorce

(600-feet) A March of Time production which surveys the problems of broken homes and the increasing divorce rate by examining the effects of mechanization on present-day family relations. The opinions of several experts as to what should be done are included.

\$14.44

Metropolitan String Quartet--Folk Songs

(325-feet) Three familiar American folk songs are played: "Turkey in the Straw", "Go Down Moses" and "Drink To Me Only With Thine Eyes".

\$7.95

Movie Magic

(525-feet) Shows how photography gives the breath of life to animated objects.

\$12.22

Murder On My Mind

(400-feet) An exciting drama starring A. F. Shipley and Sylvia Hartman.

\$9.95

New England Highways

(400-feet) A trip along the scenic highways of New Hampshire and Vermont to view picturesque and historic points of interest—autumn foliage—typical countryside scenes and village life. Also covers the maple sugar industry for which Vermont is famous.

\$8.88

New Ways In Farming

(600-feet) Depicts such modern agricultural trends as large-scale factory-style farming, with crops scientifically scheduled and cultivated, and the farm cooperative. Indicates how the traditionally independent farmer, with the aid of new mechanized equipment, is able to make his farm an increasingly prosperous business.

\$6.66

North Of The Arctic Circle

(500-feet) An interesting and picturesque camera tour of that area of Norway which lies within the Arctic Circle, with the sea and its wealth—the rugged, mountainous island country with arable areas occupying less of its surface than lakes and other bodies of water. Excellent photographic sequences of the people and of the species of birds native to that region.

\$11.11

No Way Back

(950-feet) A story of adventure and intrigue set in Italy in the spring of 1946, just after World War II. The story centers about an American soldier in Italy, the girl he loves, an army deserter and black market goods and money.

\$11.11

One World Or None

(300-feet) A dramatic animated summary of the world atomic situation and of the need for world control of atomic energy.

\$6.66

Personality Parade

(425-feet) Interesting personalities provide material for this film which includes the story of a priest's money-making efforts; escapades of tight rope artists; parachute jumpers, alligator hunters, and other dare-devils; a ninety-year-old mountain climber, and a man being dynamited.

\$8.88

Pheasant Fever

(300-feet) This excellent film will thrill all pheasant shooting enthusiasts. An on-the-spot illustration of training a young dog in field work.

\$9.95

Pinto Bandit

(600-feet) An exciting western thriller starring Dave O'Brien and Jim Navill.

\$12.22

Prairie Rustlers

(700-feet) Western star Buster Crabbe is seen in one of his toughest roles as he plays the part of coming of identical appearance—Fuzzy St. John is his hilarious "sidekick".

\$12.22

Problems Of Housing

(300-feet) Outlines standards for healthful, comfortable and pleasant housing, and demonstrates simple, practical ways for improving homes to meet these standards.

\$6.66

Proem

(350-feet) A unique film tying together a modern picture of changing cube forms in the picturization of the musical score.

\$6.66

Road To Hangtown

(350-feet) This is the story of a road in the picturesque Sierra Nevada, and of the men who traveled over it in search of gold in '49.

\$9.95

Remember The Alamo

(1600-feet) The interplay of historical forces which brought about the Texas War of Independence is the subject of this film. It pictures the events which lead to rebellion, Santa Anna's army entering Texas to find its way blocked by the heroic little garrison of the Alamo, and the tragic scenes which followed.

\$29.95

Rodeo Time In Reno

(400-feet) Bronco-busting battles between men and beast, trick riding, bulldogging, expert roping, and all the rest of the excitement of a western rodeo. Enjoy the excitement of this wild west holiday which is an annual event in Reno, Nevada.

\$9.95

Roman Carnival Overture

(375-feet) The complete "Roman Carnival Overture" by Hector Berlioz is presented by the Orchestra du Conservatoire de Paris with Philippe Gaubert directing.

\$7.77

Run For Your Money

(500-feet) A dramatic adventure story of the "Meet the Victim" series, starring Carl Elliot, Louise Ryan, Ed Finnegan, Mark Koven and John Peters.

\$8.88

Salute To The South

(500-feet) A scenic railroad trip through the southern states, with particularly outstanding shots in Cypress Gardens and Silver Springs, and excellent pictures of trains.

\$9.95

Sandman's Hour

(400-feet) A group of lullabies sung by the popular Vienna Boys' Choir.

\$9.95

Sandy Steps Out

(300-feet) Children will especially enjoy this story of Sandy, a dog, who seeks adventure on a neighboring farm. He becomes acquainted with such animals as goats, sheep, horses and colts, young Shetland ponies, Pyrenees Mountain dogs, deer, South American sheep and others.

\$5.55

The Secret

(275-feet) A charming film story of the special secret of Fluffy, the cat.

\$7.77

Seattle's Seafair

(300-feet) A camera visit to Seattle, Wash., to enjoy the annual Seafair with its many festivities. Gala scenes include the official welcoming of "King Neptune" and the coronation of the "Queen of the Sea"; a fireworks display and water follies show; a colorful parade; a show of water skiing, and the climax of the annual affair—speed boat racing in the Pacific.

\$8.88

Serenade

(400-feet) Selections by the well-known composer, Franz Schubert, are presented by the Vienna Boys' Choir. Numbers include "Hark, Hark the Lark", "The Old Elm" and other Schubert favorites.

\$9.95

Shark On The Line

(300-feet) Shark fishing off the Queensland coast of Australia. The deadliest terrors of the deep—sharks—battle reel and man in a thrilling deep sea adventure.

\$8.88

Sibelius

(350-feet) A motion picture interview with Finland's great composer, Jean Sibelius, including the playing of excerpts from some of his most familiar works.

\$7.77

The Sidewalk Kids

(600-feet) In their efforts to raise money to help a friend, an ex G.I., who has returned from the war wounded, a gang of west side New York boys become involved in an exciting adventure with a group of bank robbers. Seen in the presentation are Carl "Alfalfa" Switzer, Robert Lowery, Billy Halop, Teaja Loring, David Reed and Paul Bryer.

\$14.44

S. O. S. Iceberg

(300-feet) An exciting story of a shipwreck in the Arctic—and a daring swim through the icy waters to secure help while disaster threatens a group of survivors.

\$9.95

Spinning For Steelhead

(300-feet) Fishing in the Northwest with the spinning reel, its smooth accuracy demonstrated by an expert caster, for the fighting steelhead of the trout family, with an occasional battling coho salmon for variety.

\$9.95

Speckled Trout Across Canada

(300-feet) From the rivers of the maritime provinces to the lakes and streams of northern Quebec and Ontario, over-sized fighting "speckled" snail fishermen's offerings. Various methods of fly fishing are demonstrated.

\$9.95

Speed And Spokes

(400-feet) An exciting film of automobile, bicycle and motorcycle racing. You'll see a 250-mile standard model stock car race; a motorcycle hill climb in California; a cross country bicycle race in France; a cyclist fatally injured in a race, and a re-creation of the old Vanderbilt Cup automobile races.

\$9.95

Sports Car Road Racing

(350-feet) The most beautiful roadway in the world, seventeen miles along the coast of California on the scenic Monterey Peninsula, is the setting for this sports show. Here sports car enthusiasts gather annually for racing in a demonstration of fast precision driving of sports cars of English, French, Italian, American and other makes.

\$9.95

Story Of Wool

(250-feet) Pictures the large scale business of sheep raising in Australia, where wool is the backbone of the nation's economy. The film also deals with the manufacture of wool from its raw state until it is finally woven into cloth.

\$5.55

Teach Your Dog Tricks

(300-feet) A world famous dog trainer teaches you how to train your dog to do such tricks as "roll over", "follow", "beg", "somersault in the air", "play dead", and many more. The instructions are concise and easy to follow.

\$9.95

Tennyson's Land Of Lyonesse

(300-feet) Opening with a quotation from the "Idylls of the King", this picture deals in part with the ancient ruins, localities and relics associated with the King Arthur legend and the long-lost land of Lyonesse. The film features excerpts from well-known masterpieces of Lord Alfred Tennyson, and the closing sequence shows the famous author's resting place in the Poet's Corner at Westminster Abbey.

\$7.77

Through The Ropes-- Trap Shooting

(500-feet) Features an exciting wrestling match between Cowboy Davis and Terry McGinnis, with Davis the winner. Also includes shots of one of the world's oldest sports, trap shooting. The world's trap shooting record was set in 1933 by E. F. Woodward of Houston, Texas.

\$9.99

Time For Bach

(850-feet) An unusual interpretation of the works of Johann Sebastian Bach by the Bach Aria Group, an organization of singers and instrumentalists, formed by William H. Scheide, to re-introduce the little known arias from Bach's more than 200 church cantatas. The group offers a new Bach—gay and buoyant, yet spiritual and deeply moving. An animated baroque sequence by Phillip Stapp, accompanies the Bach C. Major Organ Fuge which opens the film.

\$16.66

Underwater

(275-feet) The camera goes underwater to get the exciting action of water polo and goggle fishing. Enjoy the excitement of "shooting" fish with spear and sling shot while underwater wearing goggles.

\$7.77

The Vanishing "El"

(275-feet) A sight-seeing trip along New York City's elevated railroad, including views of Chinatown, the Brooklyn Bridge, "clothes-line" alley, and many other interesting side-lights.

\$9.99

A Visit From St. Nicholas

(150-feet in color) Especially appropriate for Christmas showings, or for a special Yuletide gift for film enthusiasts, is this one produced in delightful animation and color, re-telling the familiar story of St. Nicholas' midnight visit.

\$12.95

The Wall

(500-feet) A story of adventure and romance set in the beautiful mountain regions of Switzerland, with the plot revolving around the bravery and perseverance of those who attempted to climb "The Steep Wall". Seen in the picture are Ted Kazanof, Jerry Melo and Nancy Gilley.

\$9.99

Washington State

(275-feet) The historical, industrial, geographical and scenic highlights of the state.

\$8.88

West Of Laramie

(275-feet) All the exciting atmosphere of the old west pervades this story in which cowboy actor, Tex Williams, plays the part of the sheriff who persuades a wealthy ranch owner not to break the law in driving settlers from public land.

\$6.66

Wild Life In Slow Motion

(275-feet) A remarkable study in grace and beauty made possible by these sensational slow motion pictures of wild fowl, including several species of ducks. Sportsmen, museums and schools will find this an unusually instructive and entertaining film.

\$9.99

Winner Take Nothing

(425-feet) A story of trouble in the boxing world starring Lupita Tuvor, Julian Upton, Bob Rice, Eric Colmar, Charles Tricoli, Harry Vejar, Aline Towne and Don Orland.

\$8.88

With These Weapons-- The Story Of Syphilis

(275-feet) Sponsored by the American Social Hygiene Association, the film presents briefly, concisely and effectively, the facts about syphilis, and outlines methods of combating this social disease.

\$7.77

The World At Worship

(450-feet) Features unusual ceremonies of various religious groups throughout the world, including Bethlehem at Christmas time; ritualistic religious dances in Spain and Japan; new cardinals receiving red hats in Rome ceremonies; how White Russians in America mark the Christmas holiday, and other interesting events.

\$19.95

World In A Pigskin

(450-feet) Football fans will find many a thrill in this film devoted to highlights of football games and interesting side-lights of the sport.

\$7.77

TELESCOPES & BINOCULARS

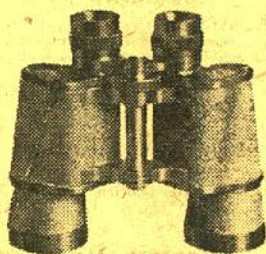


ATCO 20-POWER

TELESCOPE No. 1241

Two sections including one polished chrome draw tube. Main tube in black satin lacquer. Coated lenses. 9 1/4-inches long, closed; 14 3/4-inches long extended.

55-04, pp. 23c **\$4.49**



TELESAR 7x50 CENTER

FOCUS BINOCULARS

A fine quality Japanese-made binocular of the center focus. Coated lens. Field: 7.1-degrees. Passed by the Japan Telescopes Inspection Institute. Complete with pigskin covered, plush lined case equipped with both leather strap for hand carrying, and leather shoulder strap. You won't go wrong on this Telesar 7x50!

55-03, pp. 39c **\$24.95**

Plus 10% Federal Excise Tax

TELESAR 7x35 CENTER

FOCUS BINOCULARS

A binocular of the center focus type, with coated lenses and field of 6.5-degrees. Passed by the Japan Telescopes Inspection Institute. Has pigskin covered, plush lined case equipped with both leather strap for hand carrying, and leather shoulder strap. An outstanding buy!

55-02, pp. 35c **\$17.95**

Plus 10% Federal Excise Tax



ATCO 30x30mm.

TELESCOPE No. 1248

Three sections, including two chromed tubes. Coated, achromatic lenses. Outer tube black. With 10-inch black and chrome table tripod of adjustable new style.

55-06, pp. 31c **\$5.98**



ATCO ASTRONOMICAL-TERRESTRIAL TELESCOPE No. 1252

Alt-azimuth mounting on 5-foot field tripod. Fraunhofer type objective; achromatic, hard-coated lens. Lens aperture: 62.5mm. (2 1/2-inches) clear. Aperture 60mm. focal length 700.0mm. Light collecting power 1/naked eye; 73x. Resolving power: 2.0. Three eyepieces: 35x, 78x and 140x magnifications. One sunglass, one star diagonal and one erecting prism. Star finder 5x24mm. With focusing screw (micro-motion). In wooden cabinet.

55-07 (not mailable—you pay transportation on delivery) **\$59.95**



No. 5 WESTINGHOUSE FLASHBULBS 3800K

Our No. 14-01 HALF CASE OF 60

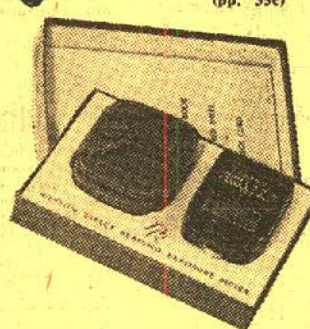
\$5.79

(pp. 31c)

FULL CASE OF 120

\$10.98

(pp. 35c)



WESTON DIRECT READING EXPOSURE METER MODEL 853 DR

Direct reading in f/stops for use with any still or movie camera. One setting only. Calibrated to ASA standards for film speeds. This model, which carried a list price of \$16.95, has just been discontinued by the manufacturer. Buy now and save \$6.96!

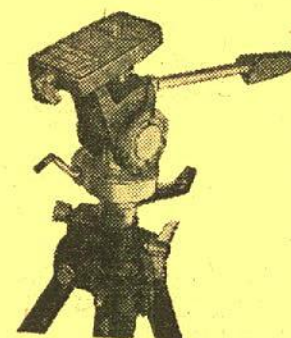
39-08, pp. 12c **\$9.99**



TELESAR ELEVATING TRIPOD (with case)

A beautifully constructed Japanese import. Extends to approximately 4-feet. Pans, tilts and has swing top which is particularly desirable for making vertical shots with 35mm. cameras. Finished in brilliant chrome-plate and satin black. Collapses to 10-inches—weighs only 1-pound, 10-ounces.

49-07, pp. 31c **\$9.95**



Superpod 2800/3

The new Testrite Tripods...

superior construction... money-saving prices!

TESTRITE SUPERPOD 2800/3

This is a three-section tripod weighing 5-pounds, 8 ounces, 76-inches completely opened, 28 1/2-inches closed, 12-inch elevator rise. Has horizontal gear for smooth movie panning, extra 90-degree tilt on pan-heads, ball level on tripod, ratchet to prevent camera from falling, single lock pan-head handle, degree marks for horizontal and vertical tilts, adjustable camera screw, aluminum anodized legs, jam-free construction, new clutch design, non-skid tips on legs, accommodates still cameras to 4x5 size, movie cameras to 16mm.

49-04, pp. 43c **\$16.95**

TESTRITE SUPERPOD 2100/3

Identical to Superpod 2800/3 but without the geared movie panning feature and with center lift post friction controlled instead of gear driven.

49-06, pp. 31c **\$9.95**

TESTRITE SUPERPOD 2400/3

Here's a real economy tripod in the lightweight class. 60-inches fully opened; 18-inches closed; 14-inch elevator rise. Aluminum reversible center post—hexagon shaped to prevent turning in either direction. Special spring clamps prevent camera from falling. Extra 90-degree tilt on panhead; adjustable camera screw; aluminum legs; non-skid leg tips.

Manufacturer's list price, \$16.95, our No. 49-08, postage 35c, price..... **\$8.95**



All of the following brands of magnetic recording tape are on 7-inch diameter reels. "A" wind. Allow 23c postage for first reel of tape, 4c for each additional reel.

48-02	Scotch Brand 111 Acetate	1200-ft.	\$2.39 each
48-01	Blackhawk 7-11A Acetate	1200-ft.	1/\$1.79 6/\$9.99
48-03	Scotch Brand 190 Extra Play Acetate	1800-ft.	\$3.49 each
48-04	Hideltape Long Playing Acetate	1800-ft.	1/\$2.79 6/\$14.95
48-05	Hideltape Long Playing Mylar	1800-ft.	1/\$3.79 6/\$19.95
48-11	Scotch Brand 200 Double Play Polyester	2400-ft.	1/\$7.95
48-12	Hideltape Double Play Mylar	2400-ft.	1/\$4.49



PRICES ON CAMERA FILM GOOD ONLY TO MAY 1, 1959—NEW HIGHER PRICES GO INTO EFFECT MAY 2.

Fresh stock only—no outdated or surplus film!

20-exposure, 35mm.

Allow 6c postage for first roll, 3c for each additional roll. Prices include processing by Technicolor in New York or Hollywood, mounting and return postage.

13-03	Super Anscochrome Daylight	\$3.39 each
13-08	Super Anscochrome Tungsten	\$3.39 each
13-01	Regular Anscochrome Daylight	\$2.79 each
13-04	Kodachrome Daylight	\$2.79 each
13-05	Kodachrome Flash	\$2.79 each
13-06	Ektachrome Daylight	\$2.79 each
13-07	Ektachrome Flash	\$2.79 each

36-exposure, 35mm.

Allow 6c postage for first roll, 3c for each additional roll. Prices include processing by Technicolor in New York or Hollywood, mounting and return postage.

13-28	Kodachrome Daylight	\$4.49 each
13-29	Kodachrome Flash	\$4.49 each

25-ft. double 8mm.

Allow 12c postage for first roll or magazine, 23c for two and 4c for each additional roll or magazine. Prices include processing by Technicolor in New York or Hollywood, splitting and mounting on reel, and return postage.

25-05	Kodachrome Daylight Roll	\$3.39 each
25-06	Kodachrome Type A Roll	\$3.39 each
25-07	Kodachrome Daylight Magazine	\$4.49 each
25-08	Kodachrome Type A Magazine	\$4.49 each

50-ft. 16mm. magazines

Allow 18c postage for first magazine, 27c postage for two, and 4c for each additional magazine over two. Price includes processing and return postage—Anscochrome processed by Ansco processing stations throughout the country—Kodachrome processed by Technicolor in either New York or Hollywood.

25-03	Regular Anscochrome Daylight	\$6.79 each
25-04	Regular Anscochrome Tungsten	\$6.79 each
25-11	Kodachrome Daylight	\$6.79 each
25-12	Kodachrome Type A	\$6.79 each

100-ft. 16mm. rolls

Allow 15c postage for one roll, 27c postage for two, and 4c for each additional roll over two. Price includes processing and return postage—Anscochrome processed by Ansco processing stations throughout the country—Kodachrome processed by Technicolor in New York or Hollywood.

25-01	Regular Anscochrome Daylight	\$9.99 each
25-02	Regular Anscochrome Tungsten	\$9.99 each
25-09	Kodachrome Daylight	\$9.69 each
25-10	Kodachrome Type A	\$9.69 each



Styled for all movie and still cameras. Simple to attach and use. Easier to hold camera steady and level—no aim, carry and pan. Made of soft and flexible Vicor Vinyl plastic and light weight Alcoa aluminum.

40-10, pp. 12c, only \$2.95



Here, at money-saving prices, is a comprehensive selection of slide magazines and trays for every type of currently popular automatic or semi-automatic 2"x2" slide projector and changer. With the exception of the Kodak Cavalcade trays, all work interchangeably with both readymounts and glass mounted slides.

17-01	Airequipt (holds 36-slides)	1 (pp. 12c), \$1.77 6 (pp. 31c), \$9.99
17-12	Balomatic (holds 40 slides)	1 (pp. 18c), \$.99 3 (pp. 27c), \$2.89 12 (pp. 51c), \$11.49
17-02	IMC Molded Plastic (holds 30 slides) for use in A. O., B. & H., Keystone, TDC and Viewflex	1 (pp. 8c), \$.79 3 (pp. 27c), \$1.98 12 (pp. 43c), \$5.98
17-03	Keystone S-40 Molded Plastic (holds 40 slides) for use in A. O., B. & H., Keystone, TDC, Viewflex	1 (pp. 17c), \$.89 3 (pp. 27c), \$2.49 12 (pp. 51c), \$7.98
17-11	Kodak Cavalcade No. 1 (holds 40 readymounts)	2 (pp. 27c), \$3.95
17-13	Kodak Cavalcade No. 2 (holds 36 glass mounts)	2 (pp. 27c), \$3.95
17-04	Yankee R-36 Molded Plastic (holds 36 slides) for use in Revere and Wolensak	1 (pp. 15c), \$.89 3 (pp. 27c), \$2.59 12 (pp. 51c), \$9.98



FILMAGIC SILICONE CLOTH

Lubricates - Polishes - Protects

Here is the modern way to treat your film for trouble free showings—takes away that jump in new prints—guards against surface scratches—protects from finger marks. And the easiest thing in the world to use—FILMAGIC CLOTH can be used on a table rewind, or as film is rewound between showings on the projector itself.

12-inch by 18-inch FILMAGIC SILICONE CLOTH, sufficient to condition 100 to 150 400-ft. reels of 16mm. film, our No. 22-03, plus 6c postage, only \$2.00

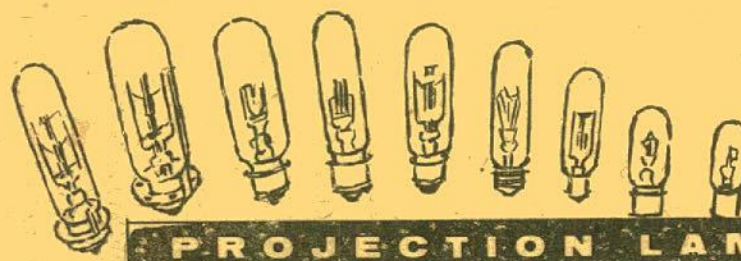


FILMAGIC PYLON KITS

for use with both 8mm. motion picture projectors and tape recorders.

This is one of the most needed gadgets to come to our attention for a long, long time. It provides silicone lubrication to the surface of your 8mm. motion picture film, or recording tape, just before it is projected or played. This means cleaner, steadier pictures on your screen—even new prints project without jump—or recordings at a much more uniform speed—freer from wows. Each kit consists of one FILMAGIC pylon, either suction cup (for smooth surfaced projectors and tape recorders) or flange type (for rough finished units), one one-half ounce bottle FILMAGIC silicone fluid and six FILMAGIC cloth sleeves. Every time you show or record or play, your film or tape is lubricated.

FILMAGIC Pylon Kit (specify suction cup, our No. 22-04, or flange type, our No. 22-05), \$2.95

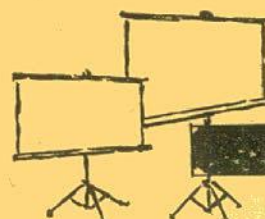


PROJECTION LAMPS

Here is the widest range of lamps yet offered by Blackhawk—brand new, fresh stock of Westinghouse domestic lamps, and Blackhawk and Votar Japanese imports—government surplus General Electric, Radiant and Sylvania lamps for 16mm. and 8mm. projectors, slide projectors, opaque and overhead projectors, filmstrip projectors and viewers.

ALLOW 12c POSTAGE FOR ONE LAMP; 24c POSTAGE FOR TWO; 4c FOR EACH ADDITIONAL LAMP OVER TWO

Our No.	Description	Sale Price
42-01	100-watt, 120-volt, S-11, S. C.	1-69c/3-\$1.79
42-02	150-watt, 120-volt, T-8/70, S. C.	1-\$1.39/3-\$3.99
42-03	150-watt, 120-volt, T-8/79, D. C.	1-\$1.59/3-\$4.49
42-04	300-watt, 120-volt, T-8½, S. C. B.	1-\$2.49/3-\$6.98/6-\$13.98
42-05	300-watt, 120-volt, T-8½, D. C. B.	1-\$2.59/3-\$7.49/6-\$13.98
42-06	300-watt, 120-volt, T-10, Med. Pref., Westinghouse	1-\$3.49/3-\$9.98
42-08	500-watt, 120-volt, T-10, Med. Pref., Westinghouse	1-\$3.69/3-\$9.98
42-10	500-watt, 120-volt, T-20, Med. Pref., Westinghouse	1-\$3.69/3-\$9.98/6-\$19.49
42-11	750-watt, 120-volt, T-12, Med. Pref., Westinghouse	1-\$3.98/3-\$11.49/6-\$21.98
42-12	750-watt, 120-volt, T-12, Med. Pref., Blackhawk	1-\$2.49/3-\$6.99/6-\$13.49
42-13	750-watt, 120-volt, T-12, 3LR for Bell & Howell, Westinghouse	1-\$4.79/3-\$13.98/6-\$27.49
42-15	1000-watt, 120-volt, T-12, Med. Pref., Westinghouse	1-\$4.98/3-\$14.49/6-\$27.98
42-16	1000-watt, 120-volt, T-20, Mog. Pref., Westinghouse	1-\$5.49/3-\$14.98
42-17	1000-watt, 120-volt, T-20, Med. Pref., Westinghouse	1-\$4.98/3-\$14.49/6-\$27.98
42-18	1000-watt, 120-volt, T-12, 5-LR for Bell & Howell, Westinghouse	1-\$5.49/3-\$15.99/6-\$29.98
42-34	300-watt, 120-volt, T-8½, S. C. B. Blackhawk	1-\$1.49/3-\$3.99/6-\$7.49
42-19	500-watt, 115-volt, T-10, Med. Pref., Votar	1-\$2.29/3-\$5.99/6-\$11.49
42-35	500-watt, 120-volt, T-10, Med. Pref., Blackhawk	1-\$2.29/3-\$5.99/6-\$11.49
42-20	300-watt, 115-volt, T-8½, S. C. B. Votar	1-\$1.49/3-\$3.99/6-\$7.49
42-D-21	300-watt, 120-volt, T-10, Med. Pref., G. E.	1-\$1.99/3-\$5.99/6-\$10.99
42-D-23	750-watt, 115-volt, T-12, 3-LR for Bell & Howell, Radiant	1-\$3.29/3-\$9.49/6-\$17.98
42-D-24	750-watt, 115-volt, T-12, 3-LR for Bell & Howell, Radiant, (In Soiled Carbons, Lamps New)	3-\$7.99
42-D-26	750-watt, 120-volt, T-12, Med. Pref., Sylvania	1-\$2.77/3-\$7.88/6-\$14.88
42-D-27	1000-watt, 115-volt, T-12, Med. Pref., Radiant and Sylvania	1-\$2.88/3-\$8.49/6-\$15.48
42-28	1200-watt, 120-volt, T-12, Med. Pref., Westinghouse	1-\$5.95/3-\$18.99
42-D-29	30-watt, 115-volt, S-11, S. C. B., for Mansfield Viewers	1-75c
42-33	500-watt, 120-volt, DAK Tri-Focus, Sylvania	1-\$3.99
42-14	Bell & Howell Lamp Adaptors, convert regular Medium Prefocus Lamp to Bell & Howell Ring Base, reusable	1-\$1.49



RADIANT METEOR

Popular priced tripod screen with Hi-Flect glass beaded surface, fungus resistant and washable.

RADIANT CHAMPION

High quality, tripod screen, fine grained Uniglow fabric—brilliant, wide angle reflection—fungus and flame-proof—washable.

RADIANT IMPERIAL SCREENMASTER

High quality tripod screen with the new Lenticular Uniglow fabric—combines the best features of matte white and glass beaded surfaces to produce brilliant pictures both on axis and at extreme viewing angles up to 180-degrees. Fungus and flame proof, and washable.

RADIANT IMPERIAL COLORMASTER

Highest quality tripod screen with the new Lenticular Optiglow fabric—silver surface designed to give maximum brightness on axis and side viewing angles up to 100-degrees. Resists light from sources other than the projector, making for good projection in lighted as well as darkened rooms. Fungus and flame proof, and washable.

RADIANT WALL

High quality map-type wall screen with Vyra-Flect glass beaded surface, fungus and flame proof, and washable.

Our No.	Size and Model	Radiant's List	Blackhawk's Reg. Price
44-01	30" x 40" Meteor	\$12.95	\$ 8.95
44-06	40" x 40" Meteor	\$14.95	\$10.95
44-16	37" x 50" Meteor	\$18.95	\$12.95
44-10	50" x 50" Meteor	\$20.95	\$14.95
44-D-02	30" x 40" Champion	\$26.95	\$24.95
44-D-07	40" x 40" Champion	\$28.95	\$25.95
44-D-09	45" x 60" Champion	\$44.95	\$39.95
44-D-13	52" x 70" Champion	\$49.95	\$44.95
44-D-14	60" x 60" Champion	\$49.95	\$44.95
44-22	30" x 40" Imperial Screenmaster	\$34.95	\$27.95
44-23	40" x 40" Imperial Screenmaster	\$36.95	\$29.95
44-24	37" x 50" Imperial Screenmaster	\$43.95	\$32.95
44-25	50" x 50" Imperial Screenmaster	\$47.95	\$37.95
44-26	45" x 60" Imperial Screenmaster	\$53.95	\$39.95
44-27	60" x 60" Imperial Screenmaster	\$59.95	\$44.95
44-28	52" x 70" Imperial Screenmaster	\$59.95	\$44.95
44-29	70" x 70" Imperial Screenmaster	\$64.95	\$49.95
44-30	30" x 40" Imperial Colormaster	\$39.95	\$28.95
44-31	40" x 40" Imperial Colormaster	\$42.95	\$29.95
44-32	37" x 50" Imperial Colormaster	\$47.95	\$34.95
44-33	50" x 50" Imperial Colormaster	\$51.95	\$39.95
43-09	30" x 40" Wall	\$13.50	\$10.95
43-10	37" x 50" Wall	\$17.95	\$14.95
43-11	40" x 40" Wall	\$14.45	\$11.95
43-12	45" x 60" Wall	\$27.50	\$22.95
43-13	50" x 50" Wall	\$20.50	\$16.95
43-14	52" x 70" Wall	\$35.00	\$27.95
43-15	60" x 60" Wall	\$33.00	\$26.95
43-16	63" x 84" Wall	\$54.95	\$42.95
43-17	70" x 70" Wall	\$43.50	\$33.95
43-18	72" x 96" Wall	\$69.95	\$54.95
43-19	84" x 84" Wall	\$62.50	\$49.95

Screens, because of dimensions, are not mailable and are therefore normally shipped by express. You pay transportation on delivery. No C.O.D. shipments on screens.

We've provided this information so that you will know exactly the amount you will owe. However, to help you further, we prepare a time payment schedule for you at the time we ship the merchandise. We show you the exact amount due and the dates on which the amount should be received here in Davenport. So—do not let the details bother you. We'll take the figuring.

To:

No. 82

Blackhawk's BARGAIN BULLETIN

PAID
U. S. POSTAGE
BULK RATE
Davenport, Iowa
Permit No. 344

Bargain Bulletins by FIRST CLASS MAIL or AIR MAIL

This FIRST CLASS MAIL and AIR MAIL subscription to Blackhawk's Bargain Bulletins will give you the advantage, irrespective of where you live, of getting a copy of each new issue several days before the mailing of these subscription catalogs will be on the day each new issue comes in from the printer. Wherever the mailing of an entire edition to our free distribution list stretches out for seven to ten days after receipt of the edition here.

A year's subscription, which will probably run from 14 to 17 different editions, will cost you as follows:

UNITED STATES, CANADA, MEXICO

FIRST CLASS MAIL SUBSCRIPTION.....\$1.50
AIR MAIL SUBSCRIPTION.....\$2.50

COUNTRIES OTHER THAN UNITED STATES, CANADA, MEXICO

FIRST CLASS MAIL SUBSCRIPTION.....\$2.50
AIR MAIL SUBSCRIPTION TO ANY CENTRAL OR SOUTH AMERICAN COUNTRY.....\$6.00
AIR MAIL SUBSCRIPTION TO ANY EUROPEAN COUNTRY OR ISLAND IN THE ATLANTIC.....\$9.00

AIR MAIL SUBSCRIPTION TO ANY COUNTRY IN AFRICA, ASIA, OR TO ANY PACIFIC OR MEDITERRANEAN COUNTRY.....\$15.00

Fill out this special subscription coupon and mail to us with your remittance:

BLACKHAWK FILMS DAVENPORT, IOWA

Please enter my subscription to the Blackhawk Bargain Bulletin for one year, mailing to me to me by (check appropriate square):

- ☐ First Class Mail at \$..... for which my remittance is enclosed.
☐ Air Mail at \$..... for which my remittance is enclosed.

Name.....
Street and Number.....
City.....Zone, if any.....State.....

IN FILLING IN COUPON, PLEASE PRINT. ALSO, LET US KNOW PROMPTLY OF ANY CHANGE IN YOUR ADDRESS

Good used 16mm. sound prints of POPULAR FEATURES and WESTERNS

Most subjects are on two 1600-foot or 1200-foot reels—a few longer ones on three 1600-foot reels. Average minimum running time of Westerns is about 60-minutes; of features, about 70-minutes. Allow 44c per print postage.

ABE LINCOLN OF NINTH AVENUE starring Jackie Cooper.....\$39.95
ACCOMPLICE with Richard Arlen and Veda Ann Borg.....\$19.99
APPOINTMENT FOR MURDER with Lyle Talbot and John Calvert.....\$19.99
ARE THESE OUR PARENTS- with Helen Vinson and Lyle Talbot.....\$19.99
ARSON SQUAD starring Frank Albertson and Robert Armstrong.....\$19.99
BEHIND LOCKED DOORS with Richard Carlson and Lucille Bremer.....\$29.95
BELLS OF SAN FERNANDO with Donald Woods and Gloria Warren.....\$29.95
BEYOND THE DEADLINE starring Warren Dames and Ramsay Ames.....\$19.99
THE BIG FIX with James Brown, Sheila Ryan and Reel Toomey.....\$39.95
BLACK MARKET BABIES with Ralph Morgan and Kane Richmond.....\$19.99
BLAZING RANGE with Buster Crabbe and Al St. John.....\$24.95
BLONDE FOR A DAY with Hugh Beaumont and Kathryn Adams.....\$19.99
BORDER RANGERS starring Don Barry, Pamela Blake, Robert Lowery, Wally Vernon and Tula Talbot.....\$29.95
BOWDOWN HERO with Alan Baxter and Helen Velez.....\$19.99
BOWERY RITZKRIEG with Leo Gorcey and Bobbie Jordan.....\$49.95
BROADWAY BIG SHOT with Virginia Vale and Ralph Burt.....\$19.99
CASE OF THE GUARDIAN ANGEL starring Hugh Latimer and John Penrose, with Annette Clennette, Pat Nye, Michael Ripper and Martin Boyson.....\$19.99
CHIEF SAVANNA with Tom Neal and Margaret Lindsay.....\$19.99
DANGEROUS INTRUDER with Charles Arnt and Veda Ann Borg.....\$19.99
DARK ALIBI with Sidney Toler (as Charlie Chan) and Mantan Moreland.....\$39.95
DESIRED LADY with Jane Whey and Phil Warren.....\$24.95
DEVIL ON WHEELS with Darryl Hickman and Norrene Nash.....\$49.95
DICK BARTON STRIKES BACK starring Don Stanard and Bruce Walker.....\$19.99
DRAGNET with Mary Brian and Henry Wilcoxon.....\$29.95
ELLIS ISLAND with Donald Cook and Peggy Shannon.....\$19.99
FALL GUY with Clifford Pen and Robert Armstrong.....\$19.99
FALSE COLORS starring William Boyd as "Hopalong Cassidy".....\$39.95
FEMALE FUGITIVE with Evelyn Venable and Craig Reynolds.....\$19.99
FLIGHT TO NOWHERE with Alan Curtis and Evelyn Ankers.....\$24.95
THE GANG'S ALL HERE with Frankie Darro and Marcie Mac Jones.....\$29.95
GENTLEMAN JOE PALOOKA with Leon Errol and Joe Kirkwood.....\$19.99

GINGER with Frank Albertson and Barbara Reed.....\$29.95
GIRLS' TOWN with Edith Fellows, June Storey and Kenneth Howell.....\$19.99
THE GUNNY with Bonita Granville and Don Castle.....\$29.95
THE HAT BOY MYSTERY with Tom Neale and Pamela Blake.....\$24.95
HEARTACHE with Sheila Ryan, Edward Norris and Coll Willa.....\$19.99
HER FAVORITE PATIENT with John Carroll and Ruth Hussey.....\$39.95
HEROES OF THE ALAMO with Earl Hodgins and Bruce Warren.....\$39.95
HIGH SCHOOL HERO with Freddie Stewart and June Peck.....\$29.95
HIS LORDSHIP REGRETS with Claude Hulbert, Winifred Chatter and Gina Malo.....\$19.99
HOLLYWOOD AND VINE with Jimmy Ellison.....\$19.99
HONEYMOON LIMITED with Neil Hampton and Irene Moray.....\$19.99
HOPPY SERVICE A UNIT starring William Boyd as "Hopalong Cassidy".....\$39.95
I'M NAME THE MURDERER with Ralph Forbes and Marion Shilling.....\$19.99
I RING DOORBELLS with Anne Gwynne and Robert Clarke.....\$19.99
IT'S A JOKE SON with Kenny Delmar, Una Marshall and June Langford.....\$24.95
JACK OF DIAMONDS with Nigel Patrick, Joan Carol and Coril Richmond.....\$19.99
JUNIOR PROM with June Preisler and Freddie Peacock.....\$19.99
KENTUCKY WITH STEAK with Eddie Nugent and Patricia Scott.....\$29.95
THE KID SISTER starring Roger Pryor and Judy Clark.....\$19.99
LADY AT MIDNIGHT with Richard Denning and Frances Baffery.....\$29.95
LADY LET'S DANCE with Belita and James Ellison.....\$29.95
LARCENY IN HER HEART with Hugh Beaumont and Cheryl Walker.....\$19.99
LIGHTHOUSE with Don Castle, June Lange and John Lital.....\$19.99
LONE RIDER AND THE BANDIT with Gage Houston and Al St. John.....\$24.95
THE LOUD SPEAKER with Ray Walker and Jacqueline Wells.....\$19.99
MARKED MONEY with Junior Coughlan, a real collector's item—only part talking.....\$39.95
MATINEE IDOL with Henry Kendall, Kathleen Kelly, Richard Goffe and Alistair Sim.....\$19.99
MEET SIMON CHERRY starring Zena Marshall and John Bailey, with Anthony Forwood and Jeanette Creighton.....\$19.99
MEET THE MAYOR with Frank Fay and Ruth Hall.....\$19.99
MIDNIGHT LIMITED with John King and Marjorie Reynolds.....\$39.95
Marjorie Reynolds.....\$29.95
THE MISSING CORPSE with J. Edward Bromberg and Isabel Randolph.....\$29.95

THE MISSING LADY with Kane Richmond and Barbara Reed.....\$19.99
MR. MUGGS STEPS OUT starring the East Side Kids.....\$39.95
MYSTERY LINER with Noah Beery and Astrid Allwyn.....\$19.99
MYSTERIOUS MR. DAVIS with Camilla Horn.....\$19.99
MYSTERY OF THE THIRTEENTH GUEST with Helen Parrish and Dick Purcell.....\$29.95
MYSTERY MAN with William Boyd as the western hero, "Hopalong Cassidy".....\$39.95
NIGHT BEAT with Anne Crawford and Maxwell Reed.....\$19.99
THE OLD SWIMMING HOLE with Mac Jones and Jackie Moran.....\$29.95
PASTOR HALL with Nova Pilbeam and Sir Seymour Hicks.....\$19.99
PEARLS BRING TEARS starring John Stuart.....\$19.99
PHILO VANCE RETURNS starring William Wright and Terry Austin.....\$19.99
PHILO VANCE'S SECRET MISSION with Alan Curtis, Sheila Ryan, Tala Birell and Frank Jenks.....\$19.99
PICCADILLY INCIDENT with Francis Mercer, Coral Brown and an English cast.....\$19.99
THE PRETENDER with Albert Decker and Catherine Craig.....\$19.99
PRISON SHADOWS with Eddie Nugent and Lucille Lund.....\$19.99
PRISON WITHOUT BARS with Corrine Luchaire and Edna Best.....\$19.99
RECKLESS WAY with Marion Nixon and Kane Richmond.....\$19.99
RIDERS OF THE DEADLINE with cowboy star William Boyd as "Hopalong Cassidy".....\$39.95
RIP ROARING RILEY with Lloyd Hughes and Grant Withers.....\$19.99
ROAD TO THE BIG HOUSE with John Shelton and Ann Doran.....\$29.95
ROCKIES GALLERY with Frank Jenks and John Davidson.....\$19.99
THE ROGUE'S TAVERN with Wallace Ford and Barbara Pepper.....\$19.99
SEARCH FOR DANGER with John Calvert, Albert Dekker, Morris Dell and Bel Wolden.....\$19.99
THE SECRET SERVICE with Sidney Toler as "Charlie Chan".....\$39.95
SEEM-MADE LADY with Heather Angel, Harry Davenport and Brenda Marshall.....\$19.99
SHADOWS OF TERROR with Richard Fraser and Grace Giffen.....\$19.99
SHADOWS OVER CHINATOWN with Sidney Toler and Mantan Moreland.....\$39.95
SHE SHALL HAVE MURDER with Rosamond John and Derrick de Marney.....\$19.99
SHOOT TO KILL with Russell Wade and Edmond MacDonald.....\$19.99
SING SING NIGHTS with Conway Tearle and Harille Athlight.....\$19.99
SON OF THE NAVY with James Dunn and Jean Parker.....\$19.99
SPECIAL INSPECTOR with Rita Haworth.....\$29.95
SPY TRAIN with Richard Travis and Catherine Craig.....\$19.99
SQUARE SHOULDERS with Junior Coughlan and Louis Walheim.....\$19.99
STRANGE ADVENTURE OF MR. SMITH with Gus McNaughton and Norma Varden.....\$19.99
STRANGE MRS. CRANE with Robert Shane and Marjorie Lord.....\$19.99
STRANGE ILLUSION with James Lydon and Sally Eilers.....\$19.99
STRANGE IMPERSONATION with William Garman and Brenda Marshall.....\$29.95
THE STRANGLER OF THE SWAMP with Rosemary LaPlante and Robert Barratt.....\$29.95
SUICIDE SQUAD with Anton Walbrook and Sally Gray.....\$19.99