



New! **CASTLE FILMS**

WAR OF THE PLANETS

Desperate men from a strange universe kidnap a noted scientist to help them the uncanny forces of an outlaw planet. A powerful barrage of exploding missiles follows his remarkable escape through the "thermal barrier." (Available in black and white only, no color prints of this film.)

GRAND CANYON GRANDEUR

The erosion created beauty and natural majesty of the Grand Canyon. Your trip to the bottom of this mighty chasm, on a mule caravan, will be a thrilling high-light!

FANTASTIC YELLOWSTONE

You'll thrill to an endless panorama of boiling springs, spectacular geysers and wilderness beauty. See the hourly performance of Old Faithful and Yellowstone's black bear stopping traffic for a hard-out!

16mm, color/sound version, about 300-feet, list \$47.95, (postage 14c), only..... **\$39.98**

16mm, black and white/sound version, about 300-feet, list \$22.95, (postage 14c), only..... **\$19.98**

8mm, color/complete version, about 150-feet, list \$12.95, (postage 12c), only..... **\$11.49**

8mm, black and white/complete version, about 150-feet, list \$5.95, (postage 12c), only..... **\$4.98**

8mm, color/headline version, about 50-feet, list \$3.95, (postage 6c), only..... **\$3.79**

8mm, black and white/headline version, about 50-feet, list \$1.95, (postage 6c), only..... **\$1.79**



"The GOLDEN AGE of COMEDY"

Blackhawk highly recommends the feature picture currently playing many of the art and neighborhood theatres around the country called "The Golden Age of Comedy". This film, prepared by Robert Youngson, is made up of highlight excerpts of two reel comedies made during the 1920s by Hal Roach and Mack Sennett. Blackhawk has the 8mm. rights for a number of these. Many of you may, therefore, wish to enlarge your own 8mm. libraries with these top comedy selections from which "The Golden Age of Comedy" has been prepared.

Here they are:

TWO TARS with Laurel and Hardy (500-ft. on three 200-ft. reels), pp. 27c..... **\$12.98**

DOUBLE WHOOP with Laurel and Hardy, and Jean Harlow (300-ft. on two 200-ft. reels), pp. 18c..... **\$ 8.98**

NIGHT OWLS with Laurel and Hardy (325-ft. on two 200-ft. reels), pp. 18c..... **\$ 8.98**

WE FAW DOWN with Laurel and Hardy (325-ft. on two 200-ft. reels), pp. 18c..... **\$ 8.98**

THE CAKE EATER with Will Rogers (300-ft. on two 200-ft. reels), pp. 18c..... **\$ 8.98**

CIRCUS TODAY with Billy Bevan and Madeleine Hurlock (300-ft. on two 200-ft. reels), pp. 18c..... **\$ 8.98**

A HAREM KNIGHT with Ben Turpin (300-ft. on two 200-ft. reels), pp. 18c..... **\$ 8.98**

YUKON JAKE with Ben Turpin (300-ft. on two 200-ft. reels), pp. 18c..... **\$ 8.98**

Blackhawk's COMEDY CARNIVAL

Several famous comedy subjects of the silent days, available from Blackhawk for the first time, and others now available from Blackhawk in 16mm. silent as well as 8mm. form.



THE PAWN SHOP with CHARLIE CHAPLIN and EDNA PURVIANCE

Here is one of Chaplin's most famous two reel comedies from the series of twelve made for Mutual in 1916-1917, which are now in public domain.

Excellent copying materials have been made available to us, so prints are of quite good general quality.

Charlie plays the part of handy-man in the pawn shop... Edna is daughter of the pawn shop owner. Of course, in addition to sweeping and tidying up the stock, Charlie can double as a clerk and really louses things up for the customers. And when he goes to work with a ladder on the outside, you'll want to duck yourself!

16mm, silent version, about 700-feet on two 400-ft. reels (plus 19c pp.)... **\$29.98**

8mm, silent version, about 350-feet on two 200-ft. reels (plus 18c pp.)... **\$9.98**



BARNEY OLDFIELD'S RACE FOR A LIFE

A Mack Sennett-Keystone Comedy of 1914 with MABEL NORMAND, MACK SENNETT, FORD STERLING and BARNEY OLDFIELD

For our money, this is just about tops for a Mack Sennett-Keystone Comedy. It has everything but the Kops—and it really has their counterpart in a chase on two railroad hand cars. Mack is the bashful boy in love with Mabel—Ford Sterling is the villain ("If I can't have Mabel, nobody can!"). Mabel gets herself kidnapped by the villain and chained to the railroad track—Mack goes for help and gets it from Barney and his racing car—they gotta stop the train! It's really great stuff—and recommended without reservation!

AVAILABLE NOW IN 16mm. SILENT!

16mm, silent version, about 300-ft. (pp. 9c)..... **\$14.98**

8mm, version, about 150-ft. (pp. 12c)..... **\$4.49**



HIS BITTER PILL A Mack Sennett-Keystone Comedy of 1916 with MACK SWAIN

Here's a great Keystone Comedy of the 1916 era, produced by Mack Sennett and originally distributed by Triangle. It stars Mack Swain as the sheriff with a heart of gold who falls in love with a girl of the golden west who is also being chased by a slicker. Of course, everything comes out all right in the end—but not until after Mack has almost dangled at the end of a rope himself.

8mm, version, about 300-ft. on two 200-ft. reels (plus 18c pp.)... **\$8.98**

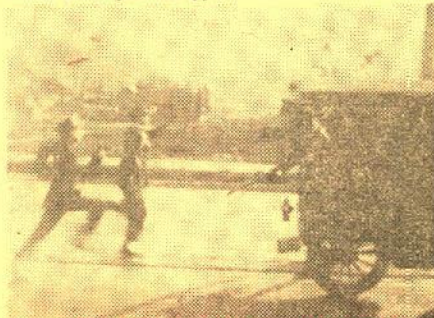


BECAUSE HE LOVED HER

A Mack Sennett-Keystone Comedy with SAM BERNARD, MAE BUSCH, FORD STERLING AND THE KEYSTONE KOPS

Sam Bernard is cast as the chef—Mae Busch as the cashier. And the chef and the cashier are somewhat that way about each other—but the boss gets in the act. Then there is a pie baked for the boss into which Sam puts poison—(get rid of the competition)—only the boss gives it to Mae to take home. Horrors! Here's where Ford Sterling and the Keystone Kops enter the scene. Can't you see things picking up speed! The Kops almost wreck everything—it's a wonder they ever get to their destination. And, how does it turn out? False alarm! It wasn't poison after all—just a little bourbon!

8mm, version, about 300-feet on two 200-ft. reels (plus 18c pp.)... **\$8.98**



WIFE AND AUTO TROUBLE

with WILLIE COLLIER, MAE BUSCH and THE KEYSTONE KOPS

Here's a Mack Sennett-Keystone Comedy of the 1916 period that starts out as a sort of drawing room farce and ends up with typical Sennett slapstick. Willie is married to a Sherman tank, and in the stock and bond business with his brother-in-law, Mae Busch is his "speedy" secretary. The tank gets suspicious and trails Willie and the secretary to a dine and dance spot of the day—but Willie escapes. To be big about the whole thing, he makes out that he has just purchased a new Model T (you ought to see it, brass radiator shell and all) but things get involved with the police, and a real Keystone Kops chase. We recommend it!

AVAILABLE NOW IN 16mm. SILENT!

16mm, silent version, about 400-feet (plus 9c pp.)... **\$17.98**

8mm, version, about 200-ft. (plus 12c pp.)... **\$4.98**



THE ROUNDERS with CHARLIE CHAPLIN and FATTY ARBUCKLE

A Mack Sennett-Keystone Comedy with Charlie and Fatty cast as a couple of wayward husbands out on the town—mostly at the saloon—where the boys don't take long to become lit—and their wives don't take long coming after them. This is a gem of an early Keystone with these two great comedians at the start of their careers in films.

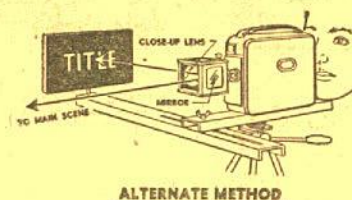
AVAILABLE NOW IN 16mm. SILENT!

16mm, silent version, about 300-feet (pp. 9c)..... **\$14.98**

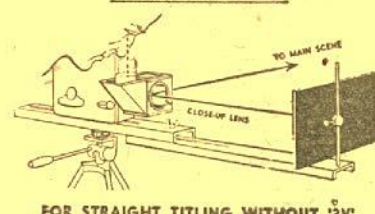
8mm, silent version, about 150-feet (pp. 12c)..... **\$4.49**

"3V" TRI-VISION PANORAMIC TITLER

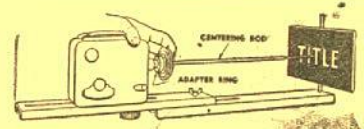
Now! SPECIAL EFFECTS MADE EASILY... WITH MOST CAMERAS



ALTERNATE METHOD



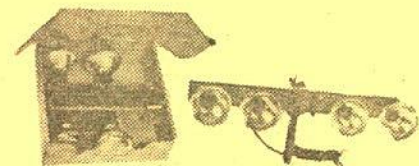
FOR STRAIGHT TITLING WITHOUT "3V"



Title as you shoot with the aid of "3V" lens attachment with its parallax-free viewfinder. You don't waste film for titles—you SUPERIMPOSE! You don't put off making your titles—you shoot them at the scene! You always start a reel with a title this simple way! Centering is simple and accurate! Lightweight and easily carried with camera—works with both 8mm. and 16mm.—for both indoor and outdoor titling. The "3V" unit which is a part of the titling kit permits all sorts of superimposed trick shots completely apart from titles.

"3V" Tri-Vision Titling Kit includes "3V" superimposing unit, fade-in-fade-out strip, two wipe strips, close-up lens holder, matte-box covers, transparent mirror and instruction booklet describing trick shots.

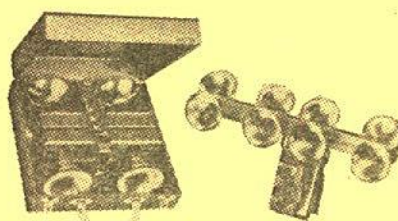
"3V" Tri-Vision Titling Kit, our No. 36-08, (pp. 35c)..... **\$32.95**



K56R30 4-SOCKET FOLDING LIGHT BAR

This light bar is fully UL approved. It takes four BEP 300-watt, R30 Reflector Floods. It has a removable pistol-grip handle which eliminates all possibility of the bar turning during filming. It has a rubber covered wide base camera platform which will accept all 8mm. cameras on today's market. It is delivered in an attractive and sturdy corrugated carry carton which in turn has a luggage finish, and a carrying handle. The carry carton holds the light bar folded with all lamps in sockets.

K56R30 4-Socket Folding Light Bar, complete with lamps and carry carton, our No. 29-04, (pp. 39c)..... **\$7.98**



56EE 4-SOCKET FOLDING LIGHT BAR

A fully UL approved 4-socket folding light bar with a special molded handle which places the light ABOVE the camera, eliminating the possibility of light filtering into the cell of most electric-eye cameras which have cells located in the lower portion of the camera body. Equipped with a bounce-light feature which operates by a mere flick of the thumb while filming. When shifted into bounce-light position the automatic operation of the electric-eye cameras compensate for the change immediately without the necessity of stopping the camera. Comes complete with four 375-watt midget photoflood lamps, attractively finished metal carrying case with lucite handle, piano hinge and beaded edges for safest handling and maximum strength. Case holds folded bar with lamps in sockets. (Camera shown in illustration not included.)

56EE 4-Socket Folding Light Bar, complete with lamps and metal carrying case, our No. 29-05, plus 47c postage..... **\$12.95**

THIS ISSUE EFFECTIVE UNTIL DEC. 1, 1958



DAVENPORT, IOWA

CBC SELECTOR SWITCH

You can control, from a convenient, centralized point, four separate pieces of equipment or lights. The CBC Selector Switch provides four independently controlled outlets, each set in a contrasting color for easy recognition. You can turn on one projector while you turn off another, turn off a projector and turn on lights, etc. The unit has a 10-foot heavy duty neoprene cord with a long life fused plug. The rugged, drawn metal case is finished in smart hammertone brown and has mounting ears enabling the user to mount the unit or use it flat. It is rated at 15-amperes, 115 volts.

CBC Selector Switch, our No. 35-02, (pp. 31c)..... **\$8.95**

A great new line of 16mm. sound

CARTOON PROGRAMS FOR RENT

ALL NEW PRINTS THIS FALL—ALL NEW TITLES!

Running time per program, approximately 30-minutes.

Rental for one, two or three days (in U.S.A. only)

\$3.95

RENTAL FOR EACH ADDITIONAL CONSECUTIVE DAY, 75c

In addition to rental, there is a 50c charge for delivery and return postage, and insurance, if you remit in full with your order—or \$1.00 per shipment when sent C. O. D.



CARTOON BANTER

contains: (1) ALL THIS AND RABBIT STEW (Bugs Bunny); (2) BETTY BOOP'S MOTHER GOOSELAND; (3) WEDDING BOLTS (Stone Age Cartoon); (4) TERMITES FROM MARS (Woody Woodpecker).

CARTOON MERRYMAKING

contains: (1) RHYTHM IN THE RANKS (George Pal Puppetoon); (2) DOWN BY THE OLD MILL STREAM (Bouncing Ball Screen Song); (3) THE FLYING TURTLE (Fairy Fable); (4) LULU AT THE ZOO (Little Lulu).

CARTOON FESTIVITY

contains: (1) JASPER AND THE HAUNTED HOUSE (George Pal Puppetoon); (2) SHINE ON HARVEST MOON (Bouncing Ball Screen Song); (3) THE DOG WHO CRIED WOLF (Fairy Fable); (4) THE BABY SITTER (Little Lulu).

CARTOON SPECTACULAR

contains: (1) WESTERN DAZE (George Pal Puppetoon); (2) BY THE LIGHT OF THE SILVER MOON (Bouncing Ball Screen Song); (3) THE MOUSE AND THE LION (Fairy Fable); (4) LOOSE IN THE CABOOSE (Little Lulu).

CARTOON GAYETY

contains: (1) THE HECKLING HARE (Bugs Bunny); (2) WHEN YUBA PLAYS THE TUBA (Bouncing Ball Screen Song); (3) PARADE OF THE WOODEN SOLDIERS (Betty Boop); (4) CHICK AND DOUBLE CHICK (Little Lulu).

CARTOON SPARKLER

contains: (1) I LIKE MOUNTAIN MUSIC (Bouncing Ball Screen Song); (2) TORTOISE BEATS THE HARE (Bugs Bunny); (3) MOUSIE COME HOME (Andy Panda); (4) BEAUTIES (Little Lulu).

CARTOON CHARM

contains: (1) CHEESE-NAPPERS (Willie Mouse); (2) THE WACKY WEED (Andy Panda); (3) I'M JUST CURIOUS (Little Lulu); (4) THE WACKY WABBIT (Bugs Bunny).

CARTOON ENCHANTMENT

contains: (1) SUPER RABBIT (Bugs Bunny); (2) SWIM OR SINK (Betty Boop); (3) TEACHER'S PEST (Talkartoon); (4) OPERATION SAWDUST (Woody Woodpecker).

CARTOON DIVERSION

contains: (1) HAM-ATEUR NIGHT (Merrie Melody); (2) ROBOT (Betty Boop); (3) HOT DOG (Talkartoon); (4) THE INVISIBLE WOODY (Woody Woodpecker).

CARTOON TWINKLES

contains: (1) LET'S ALL SING LIKE THE BIRDIES SING (Bouncing Ball Screen Song); (2) JACK AND THE BEANSTALK (Betty Boop); (3) INDIAN WHOOPEE (Woody Woodpecker); (4) WABBIT TROUBLE (Bugs Bunny).

CARTOON THEATRE

contains: (1) WHEN TULIPS SHALL GROW AGAIN (George Pal Puppetoon); (2) MASK A RAID (Betty Boop); (3) GRAND UPROAR (Talkartoon); (4) BUGS BUNNY GETS THE BOLD.

CARTOON HAPPINESS

contains: (1) STROLLING THROUGH THE PARK (Bouncing Ball Screen Song); (2) UPSTANDING SITTER (Looney Tune); (3) THE FULLER BRUSH MAN (Stone Age Cartoon); (4) WHAT'S SWEEPIN' (Woody Woodpecker).

CARTOON FRIVOLITY

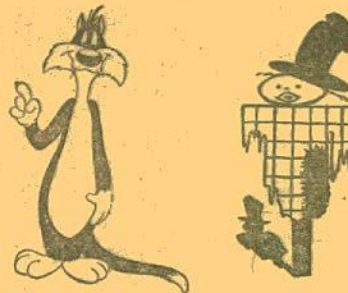
contains: (1) WACKIKI WABBIT (Bugs Bunny); (2) SPRING SONG (Bouncing Ball Screen Song); (3) THE UGLY DINO (Stone Age Cartoon); (4) THE STAGECOACH HOAX (Woody Woodpecker).

CARTOON FOURSOME

contains: (1) COMIN' ROUND THE MOUNTAIN (Bouncing Ball Screen Song); (2) BETTY BOOP, M. D.; (3) SLEEP HAPPY (Woody Woodpecker); (4) HIAWATHA'S RABBIT HUNT (Bugs Bunny).

CARTOON REVIEW

contains: (1) IT HAPPENED ON MULBERRY STREET (George Pal Puppetoon); (2) THE BEAK'S TALE (Looney Tunes); (3) WISE FLIES (Talkartoon); (4) JACKWABBIT AND THE BEANSTALK (Bugs Bunny).



CARTOON TRICKS

contains: (1) WILBUR THE LION (George Pal Puppetoon); (2) KIDS IN THE SHOE (Cartoon Classic); (3) TREE SAPS (Talkartoon); (4) CASE OF THE MISSING HARE (Bugs Bunny).

CARTOON KIDDING

contains: (1) THE 500 HATS OF BARTHOLOMEW CUBBINS (George Pal Puppetoon); (2) GOOD NIGHT ELMER (Looney Tune); (3) UP TO MARS (Talkartoon); (4) WHO'S COOKING WHO? (Woody Woodpecker).

CARTOON MERRIMENT

contains: (1) DATE WITH DUKE (George Pal Puppetoon featuring Duke Ellington); (2) TWEETY PIE; (3) FIRE BUGS (Talkartoon); (4) HOLLYWOOD MATADOR (Woody Woodpecker).

CARTOON MAGIC

contains: (1) GOLDEN STATE (Bouncing Ball Screen Song); (2) EDUCATED FISH (Cartoon Classic); (3) THE GREAT MAGICIAN (Woody Woodpecker); (4) DAFFY DUCK SLEPT HERE (Looney Tune).

CARTOON SIDESHOW

contains: (1) CIRCUS COMES TO TOWN (Bouncing Ball Screen Song); (2) LITTLE LAMBKIN (Cartoon Classic); (3) BACK ALLEY UPROAR (Looney Tune); (4) THE GOOFY GOLFER (Woody Woodpecker).

CARTOON PRANKS

contains: (1) TOYS WILL BE TOYS (Bouncing Ball Screen Song); (2) WACKY WILDLIFE (Looney Tune); (3) CILLY GOOSE (Noveltoon); (4) THE GATE CRASHER (Woody Woodpecker).

CARTOON MONKEYSHINES

contains: (1) SNAP HAPPY (Little Lulu); (2) PEEP-ING PENGUINS (Cartoon Classic); (3) CHURCH KITTEN (Noveltoon); (4) DIZZY ACROBAT (Woody Woodpecker).

CARTOON ANTICS

contains: (1) BIRTHDAY PARTY (Little Lulu); (2) WILLIE MOUSE, SAILOR BOY; (3) BILLBOARD FROLICS (Merrie Melody); (4) BUCCANEER WOODPECKER (Woody Woodpecker).

CARTOON FROLIC

contains: (1) LITTLE LULU IN HOLLYWOOD; (2) GRANITE HOTEL (Stone Age Cartoon); (3) WE'RE IN HONEY (Noveltoon); (4) HOLD THE LION, PLEASE (Bugs Bunny).

CARTOON ROMP

contains: (1) BORED OF EDUCATION (Little Lulu); (2) FOUL BALL PLAYERS (Stone Age Cartoon); (3) NOTHING BUT THE TOOTH (Merrie Melody); (4) ACE IN THE HOLE (Woody Woodpecker).

CARTOON CELEBRATION

contains: (1) SOMEWHERE IN DREAM LAND (Cartoon Classic); (2) TOY TOWN HALL (Merrie Melody); (3) APPLE ANDY (Andy Panda); (4) YOUNG AND HANDSOME (Woody Woodpecker).

CARTOON GALAXY

contains: (1) BUGS BUNNY AND THE THREE BEARS; (2) THE RATTLED ROOSTER (Looney Tune); (3) HUMPTY DUMPTY (Cartoon Classic); (4) DAFFY DUCK AND EGGHEAD (Looney Tune).

CARTOON CONVENTION

contains: (1) HARE RIBBIN' (Bugs Bunny); (2) SPRINGTIME IN THE ROCKAGE (Stone Age); (3) LITTLE ANNIE ROONEY (Bouncing Ball Screen Song); (4) THE SHELL-SHOCKED EGG (Looney Tune).

CARTOON SKYROCKET

contains: (1) BUCKAROO BUGS (Bugs Bunny); (2) NOAH'S LARK (Talkartoon); (3) I SAW A PUTTY TAT (Tweety); (4) WHO'S COOKIN' WHO? (Woody Woodpecker).

CARTOON-CAPADES

contains: (1) BETTY BOOP'S MUSEUM; (2) SCHOOL DAYS (Bouncing Ball Screen Song); (3) WHAT'S BREWIN', BRUIN? (Looney Tune); (4) HARE FORCE (Bugs Bunny).

CARTOON CHORUS

contains: (1) LITTLE DUTCH MILL (Cartoon Classic); (2) LITTLE ORPHAN AIRDALE (Looney Tune); (3) SNOW FOOLIN' (Bouncing Ball Screen Song); (4) HAREDEVIL HARE (Bugs Bunny).

CARTOON CONFUSION

contains: (1) SCHOOL MOUSE (Noveltoon); (2) WICKY WACKY (Woody Woodpecker); (3) COUNTRY BOY (Looney Tune); (4) A FEATHER IN HIS HARE (Bugs Bunny).

CARTOON MENAGERIE

contains: (1) GORILLA MY DREAMS (Bugs Bunny); (2) SELF MADE MONGREL (Noveltoon); (3) A DAY AT THE ZOO (Looney Tune); (4) DAFFY DUCK AND THE DINOSAUR.

CARTOON MISCHIEF

contains: (1) BELLE BOYS (Woody Woodpecker); (2) BETTY IN BLUNDERLAND (Betty Boop); (3) OF FOX AND HOUNDS (Looney Tune); (4) THE MALE MAN (Talkartoon).

CARTOON JOY RIDE

contains: (1) BASE BRAWL (Bouncing Ball Screen Song); (2) HYPHOTIC HICKS (Woody Woodpecker); (3) RADIO RIOT (Talkartoon); (4) MEXICAN JOY RIDE (Looney Tune).

And a great new line of 16mm. sound rental....

CARTOON PROGRAMS IN COLOR

ALL NEW PRINTS THIS FALL—ALL NEW TITLES!

Running time per program, approximately 25-minutes.

Rental for one, two or three days (in U.S.A. only)

\$7.95

RENTAL FOR EACH ADDITIONAL CONSECUTIVE DAY, \$1.00

In addition to rental, there is a 50c charge for delivery and return postage, and insurance, if you remit in full with your order—or \$1.00 per shipment when sent C. O. D.

CARTOON PALETTE (In Color)

contains: (1) WE'RE IN HONEY (Noveltoon); (2) LOOSE IN THE CABOOSE (Little Lulu); (3) THE GOOFY GOLFER (Woody Woodpecker).

CARTOON COLORCAST (In Color)

contains: (1) BUGS BUNNY GETS THE BOLD; (2) LITTLE LULU IN HOLLYWOOD; (3) HYPNOTIC HICKS (Woody Woodpecker).

CARTOON RAINBOW (In Color)

contains: (1) SCHOOL MOUSE (Noveltoon); (2) HARE RIBBIN' (Bugs Bunny); (3) INVISIBLE WOODY (Woody Woodpecker).

CARTOON KALEIDOSCOPE (In Color)

contains: (1) PEEPING PENGUINS (Color Classic); (2) LULU AT THE ZOO (Little Lulu); (3) TERMITES FROM MARS (Woody Woodpecker).

CARTOON TONES (In Color)

contains: (1) CHURCH KITTEN (Noveltoon); (2) BEAU TIES (Little Lulu); (3) YOUNG AND HANDSOME (Woody Woodpecker).

CARTOON CHECKS (In Color)

contains: (1) JACKWABBIT AND THE BEANSTALK (Bugs Bunny); (2) DATE WITH DUKE (George Pal Puppetoon with Duke Ellington); (3) SLEEP HAPPY (Woody Woodpecker).

CARTOON STUDIO (In Color)

contains: (1) ALL THIS AND RABBIT STEW (Bugs Bunny); (2) COO COO BIRD (Woody Woodpecker); (3) A HORSE'S TALE (Fairy Fable).

CARTOON SPLASHES (In Color)

contains: (1) HIAWATHA'S RABBIT HUNT (Bugs Bunny); (2) THE BABY SITTER (Little Lulu); (3) WHAT'S SWEEPIN' (Woody Woodpecker).

CARTOON BRUSHES (In Color)

contains: (1) CASE OF THE MISSING HARE (Bugs Bunny); (2) THE 500 HATS OF BARTHOLOMEW CUBBINS; (3) WICKY WACKY (Woody Woodpecker).

CARTOON PLAID (In Color)

contains: (1) HUMPTY DUMPTY (Color Classic); (2) SUPER RABBIT (Bugs Bunny); (3) STAGECOACH HOAX (Woody Woodpecker).

CARTOON CRAYONS (In Color)

contains: (1) HAREDEVIL HARE (Bugs Bunny); (2) BIRTHDAY PARTY (Little Lulu); (3) BUCCANEER WOODPECKER (Woody Woodpecker).

CARTOON DOTS (In Color)

contains: (1) LITTLE LAMBKIN (Color Classic); (2) WESTERN DAZE (George Pal Puppetoon); (3) HOT SHOT (Woody Woodpecker).

CARTOON EASEL (In Color)

contains: (1) THE DOG WHO CRIED WOLF (Fairy Fable); (2) THE TORTOISE BEATS THE HARE (Bugs Bunny); (3) BELLE BOYS (Woody Woodpecker).

CARTOON CHROME (In Color)

contains: (1) THE HECKLING HARE (Bugs Bunny); (2) SELF MADE MONGREL (Noveltoon); (3) SNAP HAPPY (Little Lulu).

CARTOON COCKTAIL (In Color)

contains: (1) WHAT'S COOKIN', DOC? (Bugs Bunny); (2) I'M JUST CURIOUS (Little Lulu); (3) EDUCATED FISH (Color Classic).



CARTOON SPRAY (In Color)

contains: (1) GORILLA MY DREAMS (Bugs Bunny); (2) RHYTHM IN THE RANKS (George Pal Puppetoon); (3) THE PUNY EXPRESS (Woody Woodpecker).

CARTOON CANVAS (In Color)

contains: (1) BARBER OF SEVILLE (Woody Woodpecker); (2) DIG THAT DOG (Fairy Fable); (3) WABBIT TROUBLE (Bugs Bunny).

CARTOON STRIPES (In Color)

contains: (1) HOLD THE LION, PLEASE (Bugs Bunny); (2) WILBUR THE LION (George Pal Puppetoon); (3) THE GREAT MAGICIAN (Woody Woodpecker).

CARTOON COLORS (In Color)

contains: (1) A FEATHER IN HIS HARE (Bugs Bunny); (2) IT HAPPENED ON MULBERRY STREET (George Pal Puppetoon); (3) THE GATE CRASHER (Woody Woodpecker).

CARTOON PRISM (In Color)

contains: (1) THE MOUSE AND THE LION (Fairy Fable); (2) JASPER AND THE HAUNTED HOUSE (George Pal Puppetoon); (3) REDWOOD SAP (Woody Woodpecker).

CARTOON HUES (In Color)

contains: (1) CILLY GOOSE (Noveltoon); (2) WACKIKI WABBIT (Bugs Bunny); (3) OPERATION SAWDUST (Woody Woodpecker).

CARTOON HARMONY (In Color)

contains: (1) THE WACKY WABBIT (Bugs Bunny); (2) CHICK AND DOUBLE CHICK (Little Lulu); (3) INDIAN WHOOPEE (Woody Woodpecker).

CARTOON BUBBLES (In Color)

contains: (1) HAY RUBE (Fairy Fable); (2) HARE FORCE (Bugs Bunny); (3) BORED OF EDUCATION (Little Lulu).

CARTOON CALIOPE (In Color)

contains: (1) BUGS BUNNY AND THE THREE BEARS; (2) KIDS IN THE SHOE (Color Classic); (3) THE FLYING TURTLE (Fairy Fable).

16mm. sound FEATURE PICTURES available for rent! FEATURES IN COLOR \$9.95

for 1-2-3 day's use
\$2.00 for each additional
consecutive day

ADVENTURES OF GALLANT BESS
with Cameron Mitchell, Audrey Long
and Fuzzy Knight

THE BIG CAT
with Lon MacAllister, Peggy Ann
Garner

CURLEY
with Walter Abel, Marie Wilson and
Frances Rafferty

DESTINATION MOON
with John Archer, Warner Anderson and
Tom Powers

FIGHTING MEN OF THE PLAINS
with Randolph Scott, Bill Williams and
Jane Nigh

HERE COMES TROUBLE
with Joe Sawyer, William Tracy

NORTHWEST TRAIL
with John Littel, Joan Woodbury and
Bob Steele

TULSA
with Susan Hayward, Robert Preston

WHO KILLED DOC ROBBIN
with Virginia Grey, Don Castle, George
Zucco

FEATURES IN BLACK AND WHITE \$7.95

for 1-2-3 day's use
\$1.00 for each additional
consecutive day

ALONG CAME JONES
with Gary Cooper, Loretta Young

BELLE OF THE YUKON
with Dinah Shore, Randolph Scott,
Gypsy Rose Lee

THE BIG WHEEL
with Mickey Rooney, Thomas Mitchell,
Michael O'Shea

CAPTAIN KIDD
with Charles Laughton, Randolph Scott

CASANOVA BROWN
with Gary Cooper, Teresa Wright

CHAMPAGNE FOR CAESAR
with Ronald Colman, Celeste Holm,
Vincent Price

COPACABANA
with Groucho Marx, Carmen Miranda,
Andy Russell

CARIBOU TRAIL
with Randolph Scott, George Hayes,
Karen Booth

FLIRTING WITH FATE
with Joe E. Brown

FLYING DEUCES
with Laurel and Hardy

THE GLADIATOR
with Joe E. Brown, June Travis

IMPACT
with Brian Donlevy, Ella Raines, Helen
Walker

IT'S A PLEASURE
with Sonja Henie, Michael O'Shea,
Marie MacDonald

MR. WALKIE TALKIE
with William Tracy, Joe Sawyer

MY DEAR SECRETARY
with Laraine Day, Kirk Douglas, Keenan
Wynn

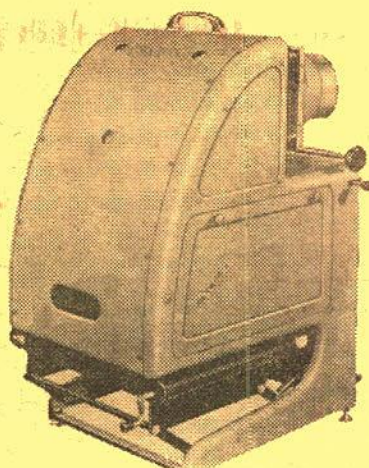
QUICKSAND
with Mickey Rooney, Jeanne Cagney,
Peter Lorre

STAGECOACH
with John Wayne, Claire Trevor,
Thomas Mitchell

WHEN'S YOUR BIRTHDAY
with Joe E. Brown

WINTER WONDERLAND
with Lynne Roberts, Charles Drake,
Eric Blore

WOMAN AT THE WINDOW
with Edward G. Robinson, Joan Bennett,
Raymond Massey



BESELER VU-LYTE OPAQUE PROJECTOR

Projects opaque material of up to 10"x10" size; uses
AC only; weighs only 33-pounds; dimensions 13-inches
wide by 22-inches long by 24-inches high; exhaust
cooling including Vacuum vacuum system for copy
hold-down; Feed-O-Matic automatic feed belt
conveyor; elevating mechanism corrects for uneven
surfaces and permits 12-degree elevation; rack and pinion
focusing and 4 1/2-inch diameter lens of 22-inches focal
length—coated for maximum passage of light.
Beseler Vu-Lyte Opaque Projector, Model 3008, brand
new, first quality, manufacturer's list \$278.50, our
No. 20-01, (not available, you pay
transportation on delivery), only..... \$199.99



Best Sellers

2"x2" SLIDE SETS ON WORLD WAR II

These 2"x2" slide sets each contain twenty (20)
regular double frame slides in black and white, each
slide is captioned, and each set of twenty is packed
in a labeled carton. For everyone with a 2"x2"
slide projector—here's an opportunity to get excel-
lent coverage of World War II—at very, very
low cost!

Price per set 79c
All twelve sets, purchased
together \$7.99
(Allow 6c postage for first slide set,
3c for each additional set.)

Here are the twelve set titles:

- WW1 — PEARL HARBOR, JAP ATTACK
- WW2 — SAIPAN
- WW3 — TARAWA
- WW4 — HOLLANDIA
- WW5 — GUAM
- WW6 — IWO JIMA
- WW7 — OKINAWA
- WW8 — NORMANDY INVASION
- WW9 — INVASION BEACHHEAD
- WW10 — PATTON BREAKS OUT
- WW11 — INVASION OF SOUTHERN FRANCE
- WW12 — THE SEVENTH DRIVES NORTH



WALT DISNEY 8mm. CARTOONS

in color and black and white
Length each, about 100-feet

Color Versions, each..... \$8.49
Black and White Versions, each \$2.49
(Allow 6c postage for first film—3c each additional
film.)

THE BEACH PICNIC with Donald Duck and Pluto
DONALD'S DOG LAUNDRY with Donald Duck
DONALD'S LUCKY DAY with Donald Duck
EARLY TO BED with Donald Duck
GENTLEMAN'S GENTLEMAN with Mickey Mouse
and Pluto

MIKEY'S PARROT with Mickey Mouse and Pluto
PANTRY PIRATE with Pluto
PLUTO'S DREAM HOUSE with Pluto
PLUTO JUNIOR with Pluto
TUGBOAT MICKEY with Mickey Mouse, Donald
Duck and Goofy

The following seven titles are available in
black and white versions only:

- CHRISTMAS IN TOYLAND (Silly Symphony)
- THE HOCKEY CHAMP with Mickey Mouse and Pluto
- MIKEY'S OUTBOARD with Mickey Mouse
- MIKEY PLAYS SANTA with Mickey Mouse
- PEG LEG THE PIRATE (Silly Symphony)
- SIX SHOOTER MICKEY with Mickey Mouse
- WINDOW CLEANERS with Donald Duck and Pluto



RADIANT WALL SCREENS

Here are the superior quality Radiant Wall (Model
W) and Wall-and-Ceiling (Model EC) glass beaded
screens for maximum illumination under normal screen-
ing conditions, dependable operation, high quality
workmanship and top design! Screens are not available.
You pay transportation on delivery. No C.O.D.'s on

MODEL W (Map Type Wall)

30"x40"	(our No. 43-09, list \$13.50, only.....)	\$10.95
40"x40"	(our No. 43-11, list \$14.95, only.....)	\$11.95
37"x50"	(our No. 43-10, list \$17.95, only.....)	\$14.95
50"x50"	(our No. 43-13, list \$20.50, only.....)	\$16.95
45"x60"	(our No. 43-12, list \$27.50, only.....)	\$22.95
60"x60"	(our No. 43-15, list \$33.00, only.....)	\$26.95
52"x70"	(our No. 43-14, list \$35.00, only.....)	\$27.95
70"x70"	(our No. 43-17, list \$43.50, only.....)	\$33.95
63"x84"	(our No. 43-13, list \$54.95, only.....)	\$42.95
84"x84"	(our No. 43-19, list \$62.50, only.....)	\$49.95
72"x96"	(our No. 43-18, list \$69.95, only.....)	\$54.95

MODEL EC (Wall and Ceiling Type)

6'x8'	(our No. 43-01), list \$96.00, only.....)	\$77.95
8'x8'	(our No. 43-03), list \$102.00, only.....)	\$79.95
7'x9'	(our No. 43-02), list \$106.00, only.....)	\$89.95
9'x9'	(our No. 43-05), list \$115.00, only.....)	\$94.95
8'x10'	(our No. 43-04), list \$127.00, only.....)	\$99.95
10'x10'	(our No. 43-07), list \$138.00, only.....)	\$109.95
9'x12'	(our No. 43-06), list \$175.00, only.....)	\$139.95
12'x12'	(our No. 43-08), list \$195.00, only.....)	\$149.95

RADIANT'S NEW UNIGLOW IMPERIAL CHAMPION TRIPOD SCREEN

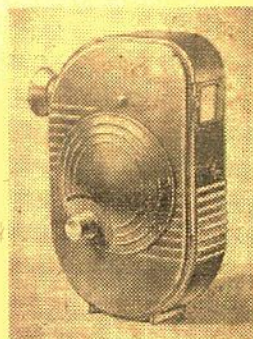


Use Uniglow, the new Radiant projection screen that
works wonders with your slides and movies! New pin-
point sharpness (particularly effective with slides) new
unbelievable brilliance (particularly from wide angles),
new, truer and richer colors and new, wide angle
viewing! Screens are not available. You pay trans-
portation on delivery. No C.O.D.'s on screens.

30"x40"	(our No. 44-02), list \$29.95, only.....)	\$24.95
40"x40"	(our No. 44-07), list \$31.95, only.....)	\$25.95
37"x50"	(our No. 44-04), list \$36.95, only.....)	\$29.95
50"x50"	(our No. 44-11), list \$39.95, only.....)	\$32.95
52"x70"	(our No. 44-13), list \$54.95, only.....)	\$44.95
45"x60"	(our No. 44-09), list \$48.95, only.....)	\$39.95
60"x60"	(our No. 44-14), list \$54.95, only.....)	\$44.95
70"x70"	(our No. 44-15), list \$59.95, only.....)	\$47.95

AIDS POCKET VIEWER

The hand-held
8mm. viewer. Shows
in normal action,
slow motion, still
view your personal
8mm. Kodachrome
and black and
white films — and
50'-reels of all
other 8mm. sub-
jects. Simple op-
eration—a child can
load and see movies
in less than a min-
ute! Ideal for home
movie fans — per-
fect for the kids—
just the gift for the
man overseas—wel-
comed by the shut-
in. Not suitable for use in editing.



Aids Pocket Viewer, our No. 37-04, complete with
50' 8mm. Blackhawk Prevue Film, (pp. 12c) \$4.95

Aids Light Accessory including Battery for use with
Aids Pocket Viewer, our No. 37-05, (pp. 6c) \$1.79

16mm. and 8mm. CINELARGERS

These Cinelargers make ex-
cellent enlargements of in-
dividual frames of your
movies using No. 620 roll-
film as a negative. Cutting
or splicing your original is
unnecessary!

(Almost all of the illus-
trations of new 8mm. and
16mm. films on page one,
columns 2 and 3, were
made by enlarging frames
of the 16mm. prints on a
Cinelarger.)

16mm. Cinelarger, our No.
23-02, postage 27c, only.....
\$17.95

8mm. Cinelarger, our No.
23-01, postage 27c, only.....
\$17.95



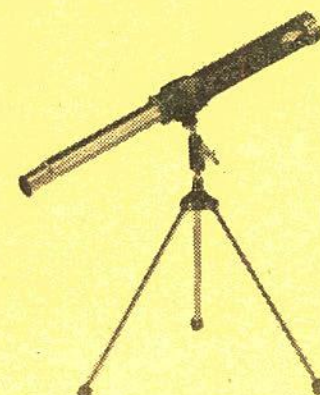
FOR A LOOK INTO SPACE.....



ATCO 20-POWER TELESCOPE No. 1241

Two sections including one polished chrome draw
tube. Main tube in black satin lacquer. Coated lenses,
9 1/2-inches long, closed; 14 3/4-inches long extended.

ATCO 20-Power Telescope, importer's list price, \$5.60,
our No. 55-04, Blackhawk's price (plus
27c postage), only..... \$3.98



ATCO 30x30mm. TELESCOPE No. 1248

Three sections, including two chromed tubes. Coated,
achromatic lenses. Outer tube eblack. With 10-inch
black and chrome table tripod of adjustable new
style.

ATCO 30x30mm. Telescope No. 1248, importer's
list price, \$8.90, our No. 55-06, Blackhawk's price
(plus 31c postage), only..... \$5.98

ATCO 55x60mm. TELESCOPE No. 1247

(Somewhat similar in general appearance
to No. 1252 illustrated below.)

60mm. objective lens (about 2 1/4-inches in diameter),
coated. White lacquered with black trim and polished
chrome draw tube. Rack and pinion focusing with
diagonal prism attachment. Wooden floor tripod.

ATCO 55x60mm. Telescope No. 1247, importer's list
price, \$32.40, our No. 55-05, Blackhawk's price (plus
67c postage), only..... \$22.95



ATCO ASTRONOMICAL- TERRESTRIAL TELESCOPE No. 1252

Alt-azimuth mounting on 5-foot field tripod. Fraun-
hofer type objective, achromatic, hard-coated lens. Lens
aperture: 62.5mm. (2 1/2-inches) clear. Aperture 60mm.,
focal length 700.0mm. Light collecting power f/naked
eye: 73x. Resolving power: 2.0. Three eyepieces: 35x,
78x and 140x magnifications. One sunglas, one star
diagonal and one erecting prism. Star finder 5x24mm.
With focusing screw (micro-motion). In wooden
cabinet.

ATCO Astronomical-Terrestrial Telescope No. 1252,
importer's list price, \$85.00, our No. 55-07. (Not
available—you pay transportation on delivery.) \$59.95



Day-Son TITLE MASTER TITLING BOARD

Grooved processed felt background, size 13 1/2"x9 1/4",
with natural finished frame. Felt comes in choice of
ebony black, cardinal red and emerald green. With
the frame comes 200 one-half inch plastic Roman Art
style interchangeable letters and figures in a handy
storage compartment box. The letters may be used
and re-used indefinitely. Double flange feature prevents
letters dropping out of grooves in background, and
assures perfect alignment.

Day-Son Title Master Titling Board and Letters, (be
sure to indicate background color), our No. 36-07 (pp. 27c), only..... \$11.95

The 8mm. and 16mm. projectors listed on these pages exceed the weight limitations, when packed, permitted for parcel post. Shipment is therefore made by Railway Express, and you pay transportation charges on delivery. No C.O.D.'s on projectors. (The same applies to the projector-camera combination offered below.)

NEVER BEFORE A BLACKHAWK BARGAIN LIKE THIS ONE!

You can buy this brand new,
first quality

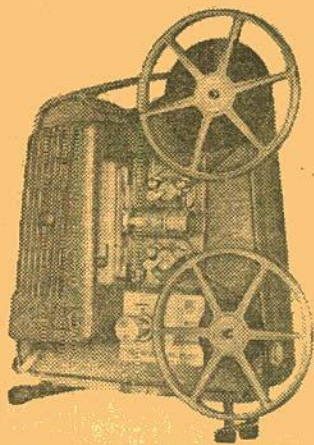
KEYSTONE CAPRI K-25 8mm. ROLLFILM CAMERA (manufacturer's list price, \$49.95)



for just
1¢

when purchased in conjunction
with this brand new,
first quality

KEYSTONE K-75 8mm. MAGNA-SCOPE PROJECTOR



at the manufacturer's regular list
price of only

\$77.50

You pay just \$77.51 for the combination of camera and projector when purchased together at one time.

The KEYSTONE CAPRI K-25 8mm. ROLLFILM CAMERA comes with a fixed focus F:2.3 lens, coated and color corrected. Large, genuine, ground optical glass finder. Exceptionally quiet operation, light-weight all aluminum die-cast construction, built-in socket on flat underside, governor controlled motor for even, friction-free running of film, beautifully finished in vinyl and brushed satin chrome. Simple, easy loading... footage indicator... three-way trigger for regular run, continuous run for self-movies or single-frame shots for tricks. Fold-away crank.

The KEYSTONE K-75 8mm. MAGNA-SCOPE PROJECTOR has 500-watt projection lamp; selector-matic control using single knob for motor, lamp, rewind and off; precision focusing knob; fast, automatic rewind; positive-locking tilt control; easy-threading film gate; 300-foot film reel. Lite-o-matic switch turns room lights on and off. Blower assures cool-running and long lamp-life.

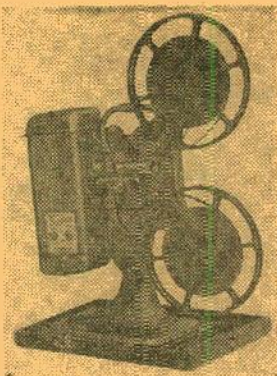
Keystone Capri K-25 8mm. Rollfilm Camera specially priced at

ONLY WHEN PURCHASED IN
CONJUNCTION WITH A

Keystone K-75 8mm. Magna-Scope Projector (our No. 30-DC) **\$77.50** priced at

BLACKHAWK WILL TAKE YOUR USED EQUIPMENT IN TRADE!

Yes, Blackhawk will be happy to make you a liberal allowance on your used 16mm. or 8mm. movie camera or projector, your used 35mm. or 2 1/4"x2 1/4" still camera, your used tape recorder or portable record player, in trade against other equipment or supplies listed in our Bargain Bulletins. Just let us know specifically as to what you have available by type of equipment, make, model number and serial number!

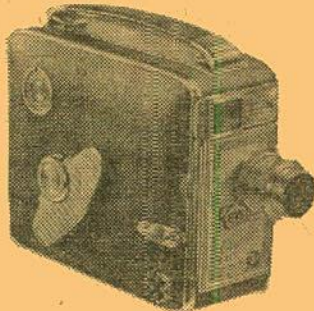


KEYSTONE K-70C 8mm. PROJECTOR

There's no kidding about it—this is the year's biggest 8mm. projector buy! This Keystone Brightbeam K-70C projector uses a 500-watt projection lamp, has an f1.6 coated projection lens and coated condenser lens. It takes up to 400-foot capacity 8mm. film reels, has rheostat speed control, has master switch to run forward with light off, forward with light on and rewind with lamp off. Twin-fan blower driven by high speed motor makes for cool, trouble-free operation. Has die-cast, one piece frame and sturdy cast metal base—all finished in handsome triple-coated bronze crackle finish. Comes complete with carrying case.

LIST PRICE, \$74.95

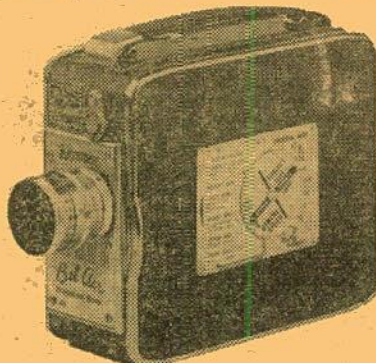
Keystone K-70C 8mm. Projector, our No. 30-83, complete with case, only **\$49.98**



KEYSTONE OLYMPIC K-32 8mm. ROLLFILM CAMERA

Weights just 27-ounces. Has stainless steel film gate; standard lens mount; exclusive magna-finder (built-in wide-angle optical viewfinder); drop-in film loading, four speeds—12, 16, 24 and 48 frames per second; light-tight, snap-lock full-hinged cover; regular run, continuous lock run (for self-movies), single frame exposure (for stop-motion animation)—all off one trigger; governor controlled for uniformity; oilite bearings for lifetime lubrication. Choice of f1.9 focusing or f1.9 fixed focus lens. Takes 25-foot double 8mm. rolls of either color or B&W film. Life-time, scuff-proof vinyl over aluminum die-casting. Leather carrying case included.

Keystone Olympic K-32 8mm. Rollfilm Camera, with f1.9 focusing lens, complete with carrying case, list \$114.00, our No. 31-04, (plus 43c postage), only **\$59.99**

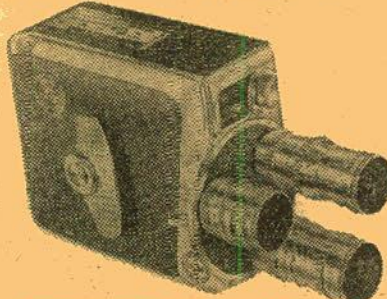


KEYSTONE BEL AIR K-41 8mm. MAGAZINE CAMERA

A handsome, lightweight camera that loads in seconds! Has f1.9 focusing lens! Has four speeds—12, 16, 24 and 48 frames a second plus single frame for special effects. 3-way trigger permits continuous operation so YOU can get in the picture. Optical finder gives full view of field without reducing field of vision! Adapts instantly to accessories lenses including wide-angle and telephoto! Safety lock requires magazine to be properly inserted before cover will close. Only a limited number are available!

LIST PRICE, \$119.50

Keystone K-41 8mm. Magazine Camera with f1.9 focusing lens, our No. 21-05, (plus 35c postage), only **\$64.95**

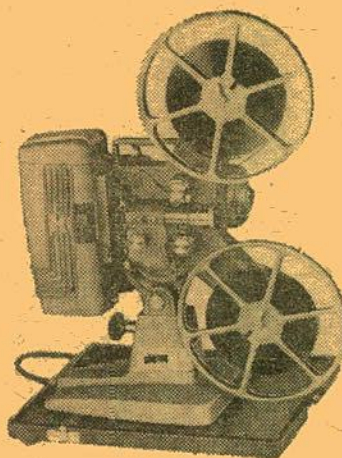


KEYSTONE K-48a 8mm. TRI-LENS BEL AIR CAMERA

A great camera and a great buy! Quick-shift lens turret with three fixed focus f1.9 lenses—12.5mm. wide angle, 9mm. standard and 38mm. telephoto—6-second magazine chamber loading—four speeds for slow motion, speed-up and trick shots—new marksman type viewfinder, hooded.

LIST PRICE, \$189.95

Keystone K-48a 8mm. Tri-Lens Bel Air Camera, our No. 21-06, (plus 43c postage), only **\$129.95**



KEYSTONE K-105 750-watt 8mm. PROJECTOR

The lowest-priced 8mm. projector with these most-demanded features—750-watt lamp for brighter pictures; reversing control; geared film wind—both forward and reverse! Has coated f1.6 1-inch lens, new style lamp house with condenser removable for cleaning, safety glass heat filter, all-gear film wind—no belts, advanced design film gate and side-way eliminators for rock-steady pictures, large size motor and blower for cool operation! Has precision-focusing switch, Lite-o-matic switch (turns room light on when projector light goes off), 400-foot reel capacity, rheostat speed control, rapid rewind, self-locking tilt mechanism.

LIST PRICE, \$149.50

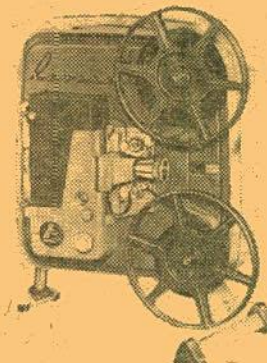
Keystone K-105 750-watt 8mm. Projector, complete with carrying case, our No. 30-05, **\$99.95** only

KEYSTONE REGAL K-109D 8mm. MAGNA-SCOPE PROJECTOR

(Similar in appearance to K-105
illustrated above.)

The home movie projector with everything. A true precision instrument, with new precision focusing knob that assures razor-sharpness of focus, greatest picture clarity ever... quickly, easily. In addition, contains built-in splicer, Lite-o-matic room light switch and editor-viewer, making it a complete, self-contained movie workshop. The Magna-Scope lens, coated and color-corrected, fills 40-inch screen at only 13-feet. Has geared reel arms, rheostat speed control, self-locking tilt mechanism, reversing switch, rapid automatic rewind, 750-watt projection lamp, takes 400-ft. reel, comes complete with carrying case.

Keystone Regal K-109D 8mm. Magna-Scope Projector, manufacturer's list price, \$174.50, our No. 30-07, Blackhawk's price **\$119.95**

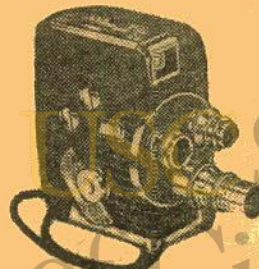


REVERE "777" 8mm. PROJECTOR

The Revere "777" is precision-built in every respect and provides professional-quality brilliance, extreme steadiness of projection and exceptional operating ease. Included are such outstanding features as: One simple control to instantly change forward projection to reverse; sliding control knob to provide fast, positive power rewind with built-in safety feature; rewind is automatically released when placed in "forward" or "reverse" position; has 3/4-inch f1.6 coated projection lens to permit extra large picture in small room; 400-ft. reel capacity; brilliant 500-watt illumination with 750-watt lamp optional; 115-volt AC-DC operation; rheostat speed control; improved, brightly illuminated still picture; no lubrication required for life; smooth, precise tilt control; handsomely styled. Compact, self-contained unit completely enclosed in streamlined case with retractable legs and handle.

LIST PRICE, \$127.50

Revere "777" Projector, our No. 30-06, **\$99.95** Blackhawk priced at



REVERE C-89 8mm. TURRET CAMERA

Uses regular spool-type film. Has 13mm. f1.9 Normal Cine aptar coated lens in focusing mount. Beautifully designed turret camera for the movie enthusiast who wants both excellent styling and film economy. Easy, quick "drop-in" spool-film loading eliminates threading or complex insertion. Precision built in every detail: lightweight, compact. Versatile 3-lens turret head is rotated instantly from one lens to another. Adjustable viewfinder gives full view of field to coincide with any of the three lenses by a flick of the finger; eliminates masks. Single frame exposure for titles and animation. Continuous run lets operator get into the picture! Five operating speeds; footage indicator; exposure guide. Brown crackle finish; chrome and leather trim.

LIST PRICE, \$147.50

Revere C-89 8mm. Turret Camera with 13mm. f1.9 Normal Cine Raptor coated lens in focusing mount, turret positions for two additional lenses, our No. 21-11, only **\$99.95**

Carrying Case for Revere C-89 8mm. Turret Camera, manufacturer's list price, \$17.50, our No. 21-14, only **\$13.95**



BELL & HOWELL 8mm. ELECTRIC EYE CAMERAS

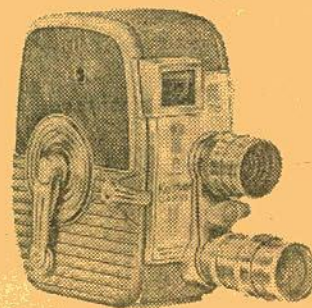
Point it, press a button, and automatically shoot perfect color movies every time! The Bell & Howell 8mm. Electric Eye uses the energy of light itself—unaided by springs, batteries or transistors—to set its own lens. It's always ready, always properly adjusted! Nothing to adjust! No guesswork! You never have to think of anything but the action you're shooting with the electric eye!

Compact! Rugged! All die cast aluminum—only 35-ounces! Viewfinder shows views for auxiliary lenses—without adjustment! Long 10-ft. film run—shoot over 7 scenes without stopping. 3-way starting button—for normal, single-frame and continuous run! Drop-in loading, fast crank winding, automatic footage indicator! These single-lens models accept 2 1/2" X telephoto and 6.5mm. wide angle accessory lenses (not included). All three models have fast 10mm. lenses, fixed focus! Shoot the action the second you see it!

Bell & Howell 8mm. Electric Eye Movie Camera, Model 390, with 10mm. f2.3 lens, finished in fawn and brown. Manufacturer's list price, \$99.95, our No. 21-20, Blackhawk's price (plus 35c postage), only **\$74.95**

Bell & Howell 8mm. Electric Eye Movie Camera, Model 391, with 10mm. f1.9 lens, finished in two-tone gray. Manufacturer's list price, \$119.95, our No. 21-21, Blackhawk's price (plus 35c postage), only **\$89.95**

Bell & Howell 8mm. Electric Eye Movie Camera, Model 392, with 10mm. f1.8 lens, and Solar-Grid that automatically adjusts for outdoor or indoor film, finished in two-tone gray. Manufacturer's list price, \$129.95, our No. 21-22, Blackhawk's price (plus 35c postage), only **\$99.95**

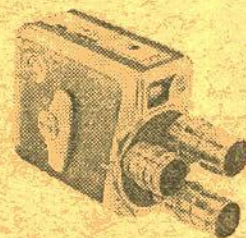


KEYSTONE K-28 TWO-LENS 8mm. ROLLFILM CAMERA

The most compact turret camera Keystone has ever offered... complete with two lenses and new vertical turret. Equipped with ultra-fast f1.9 fixed focus standard lens and f3.5 38mm. telephoto lens, in fixed focus, interchangeable mount. Genuine optical glass finder... largest of any camera of its size. Etched rectangle on finder shows view for telephoto lens. Interchangeable lens mount accepts all "D" standard-thread lenses. Light weight, all aluminum, die-cast construction. Built-in socket for tripod. Governor controlled motor provides even, friction-free film advance. Simple, easy "drop-in" loading of film, footage indicator sets automatically, fold-away, crank-type handle. Beautifully finished in gray vinyl and brushed satin chrome.

LIST PRICE, \$89.90

Keystone K-28 Two-Lens 8mm. Rollfilm Camera, our No. 21-02, only **\$59.95**



KEYSTONE K-38A 8mm. ROLLFILM MOVIE CAMERA (illustrated)

Comes equipped with three lenses—13mm. f1.9 standard, 9mm. f1.9 wide angle and f1.9 telephoto—all fixed focus. Lenses are coated and color corrected. New marksman-type optical viewfinder gives full view of scene without reducing field of vision. Motor controlled by precision governor... oilite bearing for lifetime lubrication... easy, drop in loading... four film speeds—12, 16, 24 and 48 frames per second... 3-way trigger release—regular run, continuous lock-run (for self movies) and single frame for titling and animation. Camera top provides for placement of small, compact, easy-to-read Lock-On Exposure Meter (available as accessory).

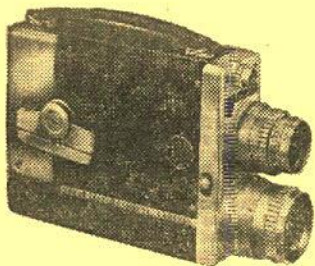
Keystone K-38A 8mm. Rollfilm Camera, complete with three f1.9 lenses in turret, our No. 21-17, manufacturer's list price, \$179.50, **\$129.95** Blackhawk's price

Keystone K-38 8mm. Rollfilm Camera, identical to Model 38-A but including only a 13mm. f1.9 focusing lens, our No. 21-18, manufacturer's list price, \$129.50, Blackhawk's price **\$89.95**

Keystone X-9 Exposure Meter made to attach to either of the above cameras, calibrated for color film ASA 10 to ASA 32, our No. 30-09, **\$9.95** Blackhawk priced at

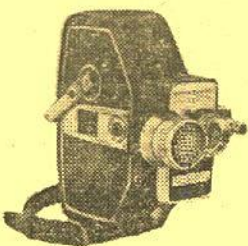
BELL & HOWELL 16mm. ELECTRIC EYE CAMERAS

World's easiest-to-use 16mm. cameras. Press a single button to capture every scene, every thrill—every time! The automatic Electric Eye continuously sets the lens for you—even if the light changes as you shoot! It never guesses, never forgets, never makes a mistake! Fast 20mm. f:1.9 focusing mount lens gives 56% more picture coverage. Warning signal in viewfinder shows when there's not enough light for good movies! Single-frame release and continuous run lock. Manual operation when desired.



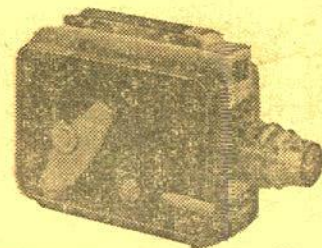
Bell & Howell Design 200EE Electric Eye 16mm. Camera. 3-second loading—slip in pre-threaded magazine, sight and shoot! Fast ratchet wind. Long 12½-ft. film run. Footage indicator window. Five filming speeds (16-64 fps.) for extreme versatility. Automatic operation for all popular film—ASA 10 to ASA 50. All die-cast aluminum, handsomely styled in black morocco and satin chrome. Manufacturer's list price, \$329.95. Our No. 21-23. Blackhawk's price (plus 43c postage), only

\$249.95



Bell & Howell Design 240EE Electric Eye 16mm. Camera. Accepts economical 100-ft. single or double perforated roll film. Automatic film threading—takes seconds. Five camera speeds (8-48 fps.). Extra long 32-ft. film run. Fast crank winding. Cable release socket. Automatic control panel—shows amount of motor power and film remaining. All die-cast aluminum—finished in Tyrolean gray leather and satin chrome. Manufacturer's list price, \$329.95. Our No. 21-24. Blackhawk's price (plus 56c postage), only

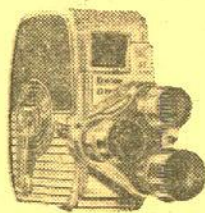
\$249.95



KEYSTONE MAYFAIR K-50 16mm. MAGAZINE CAMERA

Just 36-ounces of movie-taking ease and perfection. New push-button trigger permits regular run, continuous run, continuous lock-run (for self-movies) or single frame exposure (for stop-motion animation). Easy loading of 50-foot film magazine—magazine ejector pops out exposed magazine with the touch of a button. Has safety guard to reject magazine when pin is not set accurately in the camera. Operates at four speeds—8, 16, 24 and 64 frames per second. Has Marksman Viewfinder—built-in, full view optical finder easily set for choice of four different lenses from wide-angle to telephoto. Precision governor accurately regulates motor speed—automatic run-down stop prevents over-exposure.

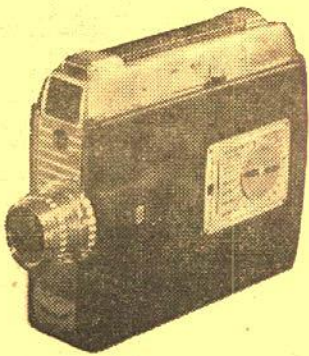
LIST PRICE, \$139.50
Keystone Mayfair K-50 16mm. Magazine Camera equipped with f:2.5 fixed focus lens of 25mm. focal length, our No. 21-67, (plus 39c postage), only **\$69.95**



Keystone Capri K-27 TRIPLE LENS TURRET 8mm. Rollfilm Camera

The 3-lens camera at a one-lens price! Here's the budget-priced model that takes the interesting and unusual shots. Equipped with 13mm. f:1.9 fixed focus standard lens plus conversion lenses for 9mm. wide-angle and 25mm. telephoto. Built-in type "A" and haze filters; a flip of the lever snaps the proper one into place. Optical ground-glass viewfinder accommodates all lenses at all times. Automatic, retractable claw makes possible simple drop-in loading and sure start. Footage indicator sets automatically—signals in event of accidental am. Three-way trigger controls regular run, continuous run for self movies and single frame for tricks. Lightweight, streamlined construction . . . quiet operation . . . finished in gray vinyl and brushed satin chrome.

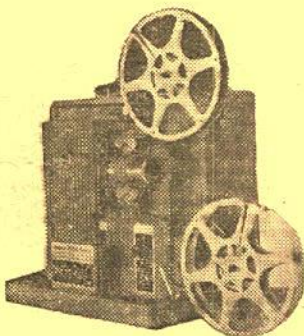
Keystone Capri K-27 Triple Lens Turret 8mm. Rollfilm Camera, manufacturer's list price, \$99.95, our No. 21-16, Blackhawk bargain priced **\$69.95** at only



CINE KODAK ROYAL 16mm. MAGAZINE CAMERA No. 95

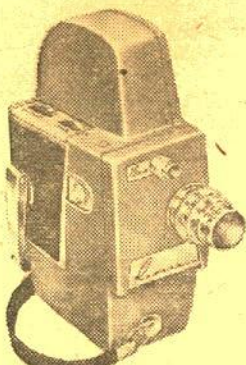
Loads in just 3-seconds with pre-threaded film magazines. Switch films any time. Exposure speeds are 16, 24 and 64 frames—and single frame. Built-in exposure guide. Zoom-type optical finder adjusts for lenses of from 15mm. to 152mm. Has Kodak Cine Ektar Lens, 25mm. f:1.9 (L) in Type M mount. Manufacturer's list price, \$198.00. Our No. 21-25. Blackhawk's price (plus 43c postage), only

\$149.95



KODASCOPE ROYAL 16mm. SILENT PROJECTOR

Outstanding optics results in brilliant movie screenings. Built-in field-sharpening element makes Royal movies needle sharp. Hinged-cover compartment holds projection incidentals. Reversing control permits re-viewing scenes of special interest. Permanently pre-lubricated. Attached reel arms with enclosed nylon gears. Has Kodak Ektanor 2-inch f:1.6 projection lens, 750-watt lamp. Takes 400-ft. film reel. Not mailable—you pay transportation on delivery. No. C.O.D.'s on this item. Kodascope Royal 16mm. Silent Projector, our No. 21-02. Manufacturer's list price, \$295.00. Blackhawk's price **\$229.95**

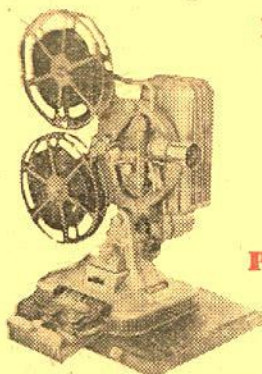


REVERE C-102 16mm. CAMERA

USES 100-FT. SPOOL-TYPE FILM

Here is Revere's answer to low-cost 16mm. enjoyment—a combination of spool film economy with amazing easy loading. Has 1-inch f:1.9 Normal Cine Raptor coated lens in focusing mount. The Revere C-102 embodies a host of exclusive features that place it in a class by itself. It features single knob automatic loading . . . single knob for manual loading and cleaning of aperture plate . . . use of either one-side or two-side perforated film . . . extra-powerful long running spring motor; mechanism stop to prevent over-exposure on spring run-down; new objective viewfinder; fast crank winding; steadfast of pictures due to improved claw-motion mechanism; offset hinged door for easy access to film; smart, modern design.

LIST PRICE, \$194.50
Revere C-102 16mm. Camera with 1-inch f:1.9 Normal Cine Raptor coated lens in focusing mount, our No. 21-712, (plus 51c postage), only **\$139.95**



KEYSTONE BELMONT K-161M 16mm. PROJECTOR

Big, brilliant theatre-quality projection with BIG IMAGE lens which delivers screen images 78% bigger. Has 750-watt lamp, automatic safety glass heat filter, removable optical glass condensers and reflectors for cleaning ease; rheostat variable speed control, fast and automatic rewind, reversing switch, large size motor and blower, easy threading, built-in editor-viewer, Lite-o-matic switch, built-in splicer, single-frame viewer for use in editing. Operates on 110 to 120 volts, AC-DC.

LIST PRICE, \$169.50
Keystone Belmont K-161M 16mm. Silent Projector, complete with carrying case, our No. 21-01, only **\$139.50**

EARLY FALL BARGAINS IN

USED 16mm. SOUND PROJECTORS

Projector prices are exclusive of transportation and projectors, because of weight, are not mailable. For most destinations, Railway Express is the most satisfactory method, but we'll be glad to ship by freight—either truck or rail—if you request. Projectors will not be shipped C.O.D. without a deposit of \$25.00 to guarantee transportation charges.

AMPRO PARAMOUNT 20

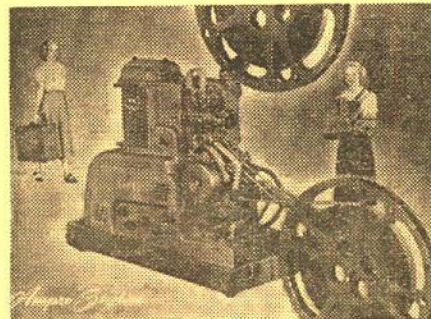
Manufactured in 1947 and 1948. Has 15-watts amplification and 12-inch speaker. Does not operate in reverse.

\$166.66

AMPRO PREMIER 20

Manufactured between 1947 and 1949. Has 15-watts amplification and 12-inch speaker. Operates both forward and in reverse, at both sound and silent speeds.

\$166.66



AMPRO STYLIST (Single Case)

Manufactured between 1949 and 1952. Has 4-watts amplification and 8-inch speaker. Operates at sound speed only. Does not operate in reverse.

\$149.99

AMPRO STYLIST (Single Case)

Manufactured between 1949 and 1952. Has 4-watts amplification and 8-inch speaker. Operates at sound and silent speeds. Does not operate in reverse.

\$177.77

AMPRO COMPACT (Single Case)

Manufactured between 1948 and 1951. Has 5-watts amplification and 8-inch speaker. Operates at both sound and silent speeds. Does not operate in reverse.

\$166.66

AMPRO CENTURY 5 (Single Case)

Manufactured in 1948 and 1949. Has amplifier of 5-watts output and 6-inch PM speaker. Operates at sound speed only.

\$99.95

AMPRO CENTURY 10

Manufactured in 1946 and 1947. Two case unit, operating at sound speed only. Has amplifier of 15-watts output and 12-inch PM speaker.

\$117.77

AMPRO PREMIER 10

Manufactured in 1947 to 1947. Two case unit, operating at both sound and silent speeds and in reverse. Has amplifier of 15-watts output and 12-inch PM speaker.

\$122.22

BELL & HOWELL 138

Manufactured between 1936 and 1940. Has 6-watts amplification and 8-inch speaker. Operates on 60-cycle, AC only. Is equipped with 750-watt lamp and 2-inch focal length projection lens. Takes up to 1600-foot capacity film reels. Has motor-driven rewind. Most of these units operate at sound speed only—but a few operate on silent speed also.

\$109.99

BELL & HOWELL 185

Manufactured between 1949 and 1951. Has amplifier of 25-watts output and 12-inch PM speaker. Operates on both sound and silent speeds, and in reverse.

\$199.95

BELL & HOWELL 285 (Single Case)

Manufactured between 1952 and 1955. Operates at both sound and silent speeds. Has 10-watt amplifier, 6-inch PM speaker. Motor driven rewind. Microphone input.

\$249.95

DeVRY-TSI DU-5 (The Duolite)

Current model. Here is the very flexible projector with its own 140-square inch translucent screen for rear desk top projection—or for regular projection to tripod or wall screen. Has 5-watt amplifier, 6-inch P. M. speaker, and operates on both AC and DC. Our units of this model are in especially fine condition.

\$199.95

DeVRY BANTAM (Single Case)

Manufactured between 1952 and 1954. Has 5-watts amplification and 6-inch speaker. Operates on 60-cycle, AC only. Has 750-watt lamp, 2-inch projection lens. Takes up to 1600-foot capacity film reel. Has motor-driven rewind—operates at both sound and silent speeds.

\$127.77

DeVRY RS

Manufactured between 1941 and 1948. Has 30-watts amplification and 12-inch PM speaker. Operates at both sound and silent speeds.

\$112.22

DeVRY SUPER 16

Manufactured between 1949 and 1952. Has amplifier of 15-watts capacity, 12-inch PM speaker, 750-watt projection lamp, 2-inch standard projection lens. Operates at sound speed on 60-cycle AC only. Has motor-driven rewind. Takes up to 2000-foot capacity film reels.

\$155.55

EASTMAN KODASCOPE PAGEANT (Single Case)

Manufactured between 1949 and 1954. Has 5-watts amplification and 6-inch speaker. Does not operate in reverse. Runs at sound speed only.

\$199.95

EASTMAN KODASCOPE FS-10-N

Manufactured between 1944 and 1946. One case unit, operating at both sound and silent speeds. Has amplifier of 10-watts output and 10-inch PM speaker.

\$99.95

MOVIE MITE 63

Manufactured in 1946 and 1947. One case unit, operating at sound speed only. Has amplifier of approximately 4-watts output and 6-inch PM speaker.

\$89.95

NATCO 3030 (Single Case)

Manufactured between 1948 and 1951. Operates at both sound and silent speeds, and on both AC and DC. Has 5-watt amplifier and 8-inch PM speaker.

\$119.95

REVERE S-16 (Single Case)

Manufactured between 1947 and mid-1950s. Operates at both sound and silent speeds, on both AC and DC. Has amplifier of approximately 5-watts and 6-inch PM speaker. Has microphone and phonograph inputs.

\$99.95

RCA PG-201

Manufactured between 1945 and 1947. Has amplifier of 20-watts output and 10-inch PM speaker. Operates at sound speed only.

\$99.95

VICTOR 25AC

Manufactured between 1936 and 1939. Has amplifier of 18-watts output and 12-inch speaker. Operates at both sound and silent speeds.

\$99.95

VICTOR 24A (Single Case)

Manufactured in 1934. Operates at both sound and silent speeds. Has 15-watt amplifier and 10-inch speaker. Still picture clutch.

\$79.95

VICTOR 40A

Manufactured between 1940 and 1942. Operates at both sound and silent speeds. Has amplifier of 12-watts output and 12-inch PM speaker.

\$99.95

VICTOR 40B

Manufactured between 1941 and 1947. Amplifier has output of approximately 26-watts, speaker is 12-inch diameter PM type. Operates at both sound and silent speeds, and in reverse. Has still picture clutch.

\$119.95

VICTOR MODEL 55

Manufactured between 1947 and 1949. Single case unit operating at both sound and silent speeds, and in reverse. Still picture clutch. Motor driven rewind. Has amplifier of 5-watts capacity and Alnico V oval speaker, 4"x6".

\$155.55

VICTOR 56C

Manufactured in 1949 and 1950. Single case unit, operating at both sound and silent speeds. Has still picture clutch. Has amplifier of 4-watts output and 4-inch x 6-inch oval PM speaker. Operates on either AC or DC.

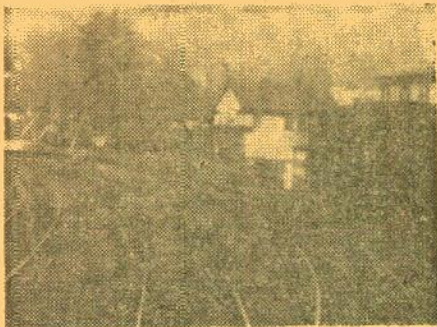
\$155.55



VICTOR 60B

Manufactured in 1947 to 1949. Has 26-watts amplification and 12-inch speaker. Stamped aluminum alloy carrying cases for projector and speaker.

\$166.66



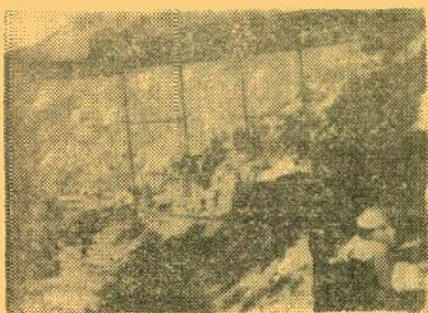
Scene from "The Hold-Up of the Rocky Mountain Express" (Biograph, 1905) photographed on the Ulster and Delaware R. R., at Phoenicia, N. Y.

THE HOLD-UP OF THE ROCKY MOUNTAIN EXPRESS

Filmed in 1905 by Biograph on the Ulster and Delaware Railroad at Phoenicia, N. Y., and on the branch from Phoenicia to Kaaterskill in the Catskills. Story-wise this is a rather uninspired production when compared to "The Great Train Robbery" which Edwin S. Porter made for Edison in 1903. But railroad-wise, it has considerable interest, for it is one of the first movies where the audience goes along for a ride on the locomotive pilot. On the siding at Phoenicia was a number of stubby box cars with arch-bar trucks bearing the herald of the New York Central.

16mm. silent version, about 300-feet (postage 9c) **\$14.98**

8mm. version, about 150-feet (postage 12c) **\$4.98**



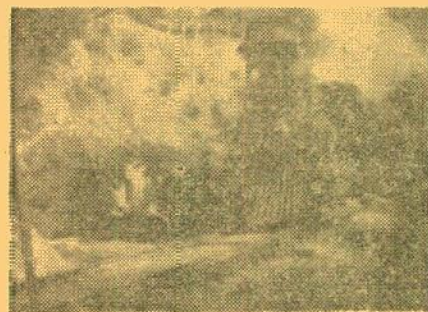
Scene from "The Georgetown Loop," (Biograph, 1903).

THE GEORGETOWN LOOP

Here is the famous narrow gauge railroad from Georgetown to Silver Plume, Colorado, filmed by Biograph in 1903. Come along for the whole trip, right on the flat car behind the observation, as we go under the spindly steel bridge over which another passenger train is crossing, around the town of Georgetown in the boom days of the mines, over the bridge and on toward Silver Plume. Text titles give historical background.

16mm. silent version, about 225-feet (postage 9c) **\$12.98**

8mm. version, about 110-feet (postage 12c) **\$4.49**



Scene of the Southern Pacific Overland Mail (Edison, 1897), included in "Famous Trains of Western Railroads, 1897-1903."

FAMOUS TRAINS OF WESTERN RAILROADS, 1897-1903

This is the omnibus film of our first three releases in our Library of Congress group for it features many trains of many western railroads, and will probably have most appeal for most people as a result. Included are: "Fast Mail, Northern Pacific R. R., 1897"; "Overland Express Arriving at Helena, Montana, Northern Pacific, 1900"; "Sherman Hill Tunnel, Union Pacific, 1903"; "Overland Limited, Union Pacific, 1902"; "California Limited, Santa Fe, 1898"; "Southern Pacific Overland Mail, 1897" and "Sunset Limited, Southern Pacific, 1899"—showing both east-bound and west-bound sections. The locomotives are all 4-4-0s or 4-6-0s, some have balloon stacks—those on the Southern Pacific Overland Mail are wood burners! The cars are all of wooden construction and most of them with open vestibules—even the Pullmans and the diners. The California Limited and the Sunset Limited were only five or six car trains—and in those years they operated only two days a week. Those of you who are railroad fans will be showing to standing room only when you invite historical groups or your model club in to see these! What you see is almost unbelievable!

16mm. silent version, about 300-feet (postage 9c) **\$19.98**

8mm. version, about 150-feet (postage 12c) **\$5.98**

COMBINATION SPECIAL!

Buy all three subjects at one time—"The Hold-Up of the Rocky Mountain Express", "The Georgetown Loop" and "Famous Trains of Western Railroads, 1897-1903"—and save considerably.

16mm. versions, all three, purchased at one time, regularly \$47.94, postage 19c extra, only **\$39.98**

8mm. versions, all three, purchased at one time, regularly \$15.45, postage 18c extra, only **\$12.98**

8mm. and 16mm. COLLECTORS ITEMS

BLACKHAWK'S NEW SERIES OF COLLECTORS FILMS FROM THE ARCHIVES OF THE LIBRARY OF CONGRESS!

In column one are listed the first three films copied by Blackhawk from the 35mm. paper prints in the Library of Congress—motion pictures from the infant days of the movies!

The entire story of this project is given on the front cover of our Bargain Bulletin No. 73. If you do not have a copy of that issue, and would like to have the story, just write and ask for a copy of Blackhawk's Sept. 5, 1958, Press Release, and it will be forwarded to you promptly.

BATHING GIRLS—THEN AND NOW

A fascinating subject showing the evolution of today's swim suit from the bathing costume of the 1890's. You'll get more than one chuckle out of the old-timers, and, as for the new ones—well, as our narrator says in the sound version, "No matter how handsome a man may be, he can never compete with bathing girls for attention on the beaches."

8mm. silent, about 150' (pp. 12c) **\$4.49**

16mm. sound, about 300' (pp. 9c) **\$14.98**

CORONATION DAYS, 1902 and 1911, AND OTHER PICTURES

A rare collectors film containing scenes of the Coronation procession of Edward VII, as the Victorian Era comes to a close in 1902; and of the Coronation of George V in 1911. In addition, there are fascinating sequences showing the great historic figures of those days—Kaiser Wilhelm visiting Edward VII, William Howard Taft, Woodrow Wilson—and King George and Queen Mary in scenes of pomp and circumstance.

8mm. silent about 150' (pp. 12c) **\$4.49**

DAYS OF McKINLEY, BRYAN and TEDDY ROOSEVELT

Almost all of the film in this production was photographed in the 1890's—the very early days of the motion picture. You'll see the New York Bowery, William Jennings Bryan, Teddy Roosevelt and the Rough Riders, Admiral Dewey's Flagship, McKinley's Inaugural Parade and Funeral Procession—and many other rare scenes.

8mm. silent, about 150' (pp. 12c) **\$4.49**

16mm. sound, about 275' (pp. 9c) **\$14.98**

AN EDISON ALBUM (1896-1907)

Complete peep-show presentations of "The Kiss"—the May Irwin-Frank Rice shocker of 1896, "The Old Maid in the Drawing Room" with Gilbert Sarnoy—made in 1900, and "Street Car Chivalry"—one of the first examples of the screen narrative—made in 1901. This is followed by Edison's "Romance of the Rails" which his cameraman, Edwin S. Porter, made with the cooperation of the Delaware, Lackawanna and Western Railroad, and which was a big further step forward in the development of the narrative motion picture. The climax is an abridgement of "Rescued From An Eagle's Nest".

8mm. silent, about 175' (pp. 12c) **\$4.98**

THE FIRST 500-MILE INDIANAPOLIS SPEEDWAY RACE, 1911

We see the first of the Indianapolis Speedway Classics in amazing detail, considering the year in which it occurred. There are good shots of the cars in line, circling the track in platoon formation before the race and then taking off at what was a terrific speed for the day (about like what we expect on our highways today). There are some good shots of tires parting with wheels, a crack-up, and the winner—Ray Harroun—who did it in a Marmon.

8mm. silent, about 150' (pp. 12c) **\$4.49**

FLIVVERING with Victor Moore

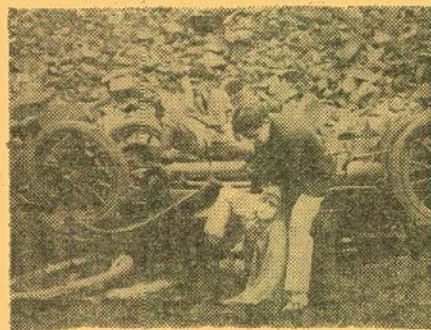
Here's a collector's film, circa 1917, featuring Victor Moore in the days long before he became one of the brightest stars of musical comedy. It's all about Vic buying a used car, vintage 1907—tagged at \$99.99—but bought for \$66.66. For both comedy, old automobile and Victor Moore fans—this is a must!

8mm. silent, about 150' (pp. 12c) **\$4.49**

TOMMY BURNS VS. BILL SQUIRES

Here's a sports collector's item if there ever was one—the world's championship heavyweight fight of July 4, 1907—held at Colma, Calif., near San Francisco. Tommy Burns was a light-heavyweight who had taken all comers and was proclaimed champion by Jim Jeffries after he had retired from the ring. Bill Squire, an Australian, had made quite a name for himself in his own country. Many thought Burns was licked even before he started—but the fight didn't even last a full round—with Burns still champion. Interesting also because of the setting, the crowds, the cameramen and the many famous personalities in the sports world who are also pictured.

8mm. silent, about 125' (pp. 12c) **\$4.49**



TWO OF THE ORIGINAL "PERILS OF PAULINE" with PEARL WHITE

DEADLY TURNING

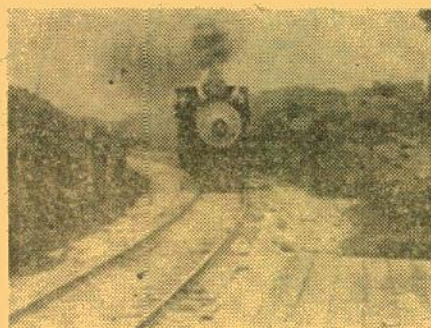
Here's a prize collector's film—one of the episodes from the original serial, "The Perils of Pauline" starring the Queen of the Serials, Pearl White. Unlike the later chapter plays or "cliff-hangers" these first serials were related episodes each complete in itself, and "Deadly Turning" has Pearl—cast as the ward of a wealthy industrialist—as a participant in a cross country automobile race—way back in 1914. The prize title is an exclamation on the part of one of the villains that goes something like this: "With these we can puncture the pneumatics!"

8mm. silent, about 200' (pp. 12c) **\$4.98**

THE PIRATE'S TREASURE

Here's the second film in the original "Perils of Pauline" that has been Blackhawk's privilege to make available. Made in 1914, this gives you another look into the most-famous serial or series picture ever produced. A RARE collector's item.

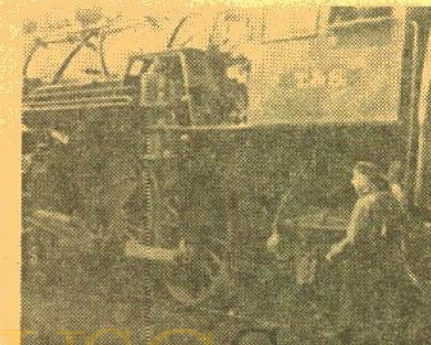
8mm. silent, about 250' (pp. 18c) **\$7.98**



THE LONEDALE OPERATOR

Here is a slightly edited down version of one of D. W. Griffith's most famous Biograph productions—and one of the earliest this pioneer company made on the west coast. It offers many innovations (for its time) in production techniques, and is a special collectors item for that reason. For rail fans, it has some excellent shots of Santa Fe American-type locomotive No. 9, a unit built in the 1870s and which was scrapped by the Santa Fe in Topeka in 1914. And, it has quite a bit of flavor of the railroading of the day.

"The Lonedale Operator," length about 200-ft., 8mm., (pp. 12c), priced at **\$4.98**



Great new Blackhawk School of Cinema 8mm. Railroad Release

THE BLOCK SIGNAL

with Ralph Lewis, Jean Arthur and Hugh Allen

Here, from the silent days of 1926, is a railroad thriller that will have more of a bang for a railroad fan today than when it was first produced. It's the story of a railroad engineer nearing retirement age, his involvement in a wreck and consignment to the spot of crossing flagman. And of his daughter with whom an ambitious young fireman and a highway engineer are both in love. The important thing, of course, is not the story, but the extensive amount of Santa Fe motive power and trains of the 1926 period that are shown. Like all railroad movies of the silent era, the movie makers didn't know much about railroading, so the story they tell isn't so convincing. But what they show of railroading in the hey-day of steam is the thing that counts, and a good portion of the total footage is devoted to just that!

"The Block Signal," about 800-feet, 8mm., on four 200-ft. reels, only **\$19.98**
(Allow 27c extra for postage.)

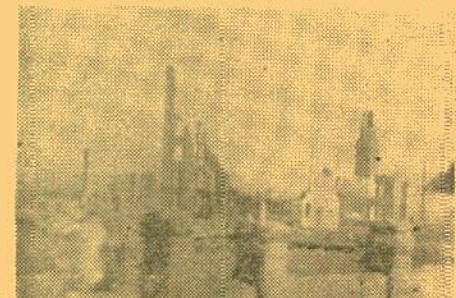


THE SAGA OF WILLIAM S. HART

Here's a unique film that virtually spans Hart's motion picture career which ran from 1914 to 1925. It contains sequences from ten of his motion picture successes from 1914 to 1924, and vividly traces not only Hart's development as the greatest Western star in the history of the screen, but the maturing of the motion picture during the years immediately before and after World War I.

8mm. version, "The Saga of William S. Hart," about 750-ft. on four 200-ft. reels (pp. 27c) **\$19.98**

16mm. silent version, "The Saga of William S. Hart," about 1500-ft. on four 400-ft. reels (pp. 24c) **\$59.98**



THE RUINS OF SAN FRANCISCO, 1906

Here is an authentic historical film showing the destruction to the city of San Francisco resulting from the earthquake and fire of 1906. Copied by us from footage in the George Kleine Collection at the Library of Congress, the segments of this film are presented exactly as released to the nickelodeons by the Edison organization, even to the original titles. Of course, made before the days of formal newsreels, when most screen fare was single reel or split reel material, this has much to be desired when viewed by the standards of today—or even of twenty or thirty years ago. Cameras were not available to catch the earthquake or the burning of the city, so the ruins shown were photographed some days later as the clean-up of the rubble was in progress.

"The Ruins of San Francisco, 1906," about 100-feet, 8mm. (pp. 12c) **\$3.99**



DOUGLAS FAIRBANKS in THE AMERICANO

Here's a Blackhawk 8mm. feature special priced well within the reach of every collector! A complete Douglas Fairbanks feature of the 1916 Triangle period, shortened just a bit from its original five reel theatrical length, to fit onto four FULL 200-foot 8mm. reels. This film features Doug at his typical smiling and athletic best, the kind of role that brought him fame and fortune. It features also the beautiful Alma Rubens. It's the story of a Yankee engineer who goes to a revolt-ridden Caribbean country because of a smile from the daughter of the President. The revolt is no match for Doug's wits and vigor and he ends up with the country in the palm of his hand—and the hand of the President's daughter as well.

8mm. silent, about 825' (pp. 27c) **\$19.98**



THE UNWELCOME GUEST with MARY PICKFORD

Here's one of the choicest collectors items Blackhawk has yet been able to offer—a 1913 production from Biograph with Mary Pickford, Jack Pickford, Claire MacDowell, and familiar faces in the Biograph Stock Company. Mary is featured as an orphan girl placed with a family each member of which seems to have a heart of steel—except for poor grandpa who is the "unwelcome guest" who comes to live with his son on the passing of poor grandma. About this time it gets to be a real tear-jerker, with grandpa and Mary subsisting on left-overs in the kitchen. But don't be concerned, for grandma, it turns out, was a miser and has stashed away a hoard at the family homestead big enough to pay off the mortgage for grandpa—and everything ends happily for both grandpa and Mary.

8mm. silent, about 275' (pp. 18c) **\$8.98**

8mm. MOVIES OF WORLD WAR II

AIR SIEGE AT PLOESTI

The U. S. Department of Defense made available to us authentic combat footage from the Air Force archives dealing with the campaign of the Army Air Force to wipe out the Roumanian oil refining center of Ploesti, one of the Nazi's principal sources of aviation fuel. There are some spectacular shots of our bombing missions over Ploesti which succeeded in knocking out this tremendous installation.

"Air Siege at Ploesti," about 150-feet,
8mm., (pp. 12c), only

\$4.49



New in 8mm. . . . GIANTS AND DWARFS OF THE BELGIAN CONGO

Come along to the enchanted land of the eastern Belgian Congo and Ruanda Urundi. See the seven-foot Watutsi natives and the midget sized pygmies. And visit Albert Park, one of the world's largest wild animal sanctuaries and see some excellent specimens of African big game in its native setting.

"Giants and Dwarfs of the Belgian Congo," about 150-ft., 8mm., (pp. 12c) \$4.49



BURMA VICTORY

The Burma Road was one of the great engineering accomplishments of our campaign against the Japanese in World War II—and our victory in Burma was somewhat a result of the supply problems that both the Burma and Lido roads solved for the Allies. Here, in a tightly edited 8mm. film, adapted from the official documentary classic of the same name on the operations of the South-East Asia Command under the leadership of Lord Louis Mountbatten, we see how the Allied Armies planned and executed a strategy which succeeded in driving the Japanese out of the difficult Burmese territory.

"Burma Victory," about 300-feet,
8mm., on two 200-ft. reels, (pp. 18c)

\$8.98

FLYING BOAT VS. GERMAN SEA RAIDER

Convoys were the lifeline to Britain during World War II, and constant patrol for submarine and surface raiders was a responsibility of the Royal Air Force. This film gives a vivid picture of the activities of the branch of the Royal Air Force whose job it was to guard convoys at sea. The narrative concerns the part played by a flying-boat in the destruction of a German raiding vessel, and the uncertain but eventually safe return of the flying boat, damaged in the engagement, to its home base.

"Flying Boat vs. German Sea Raider," about 300-ft.,
8mm., on two 200-ft. reels, (pp. 18c)

\$8.98

THE TRUE GLORY

in seven 8mm. chapters!

General Eisenhower's "Crusade in Europe"

Blackhawk's 8mm. production of "The True Glory" is edited from the sound film of the same name which is an official motion picture production of the Governments of Great Britain and the United States.

This 8mm. version, which runs a total of fourteen 200-foot reels, is divided—for purposes of convenience and economy—into seven chapters of two reels each. The footage of each chapter ranging between 275 and 350-feet. The average running time of each chapter is 25-minutes and the total running time of the entire film, approximately 3-hours.

Every foot of this definitive production was selected from millions upon millions of feet photographed by combat cameramen of the United States, Canada, France, Poland, Belgium, Netherlands, Czechoslovakia, Norway and Great Britain. Every foot is the real thing!

PRELUDE TO INVASION

D-DAY

THE BATTLE OF THE BEACHHEAD

THE LIBERATION OF PARIS

THE PUSH TO THE GERMAN FRONTIER

THE BATTLE OF THE BULGE

FINAL VICTORY

Entire seven chapters purchased at one time, (pp. 35c) \$57.98

Each chapter, purchased individually, (pp. 18c) \$8.98

VICTORY IN NORTH AFRICA

in five 8mm. chapters!

A five chapter film of the campaign in North Africa from the dark days of Rommel's push back of the British into Egypt, the British victory at El Alamein—one of the classics of the war—and the developing squeeze on Rommel by Montgomery's British forces advancing along the Mediterranean from the east, and Eisenhower's American forces pushing across North Africa from the west.

THE BATTLE OF EL ALAMEIN (3 reels)

PREPARATIONS FOR INVASION (2 reels)

LANDING IN NORTH AFRICA (2 reels)

THE WINTER MONTHS (2 reels)

THE VICTORIOUS SPRING CAMPAIGN (2 reels)

Entire five chapters purchased at one time, (pp. 31c) \$44.98

Each three reel chapter (about 450-feet on three 200-foot reels), (pp. 23c) \$12.98

Each two reel chapter (about 300-feet on two 200-foot reels), (pp. 18c) \$8.98

SHIPS AND BOATS

in 8mm. and 16mm. sound
SUPERLINER UNITED STATES

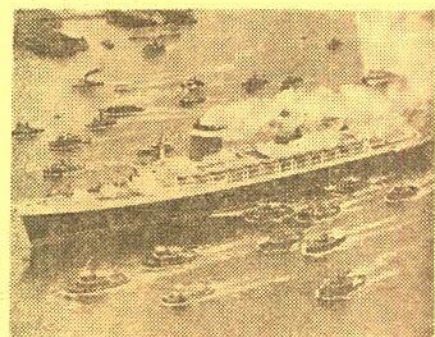
Here's a film that offers just about the widest appeal of anything we've yet offered in 8mm. It tells the story of the S. S. United States from the drafting board through construction to its record-breaking east-bound and west-bound maiden voyages. As a matter of fact, you come along on that day in 1952 when the east-bound trans-Atlantic record was broken—and you stay right on the ship for the return trip—and another record—and the tremendous welcome that awaited the ship in New York.

8mm. silent, about 300' (pp. 12c) \$8.98
16mm. sound, about 700' (pp. 19c) \$24.98

TOWBOAT ON THE RIVER

A modern "Life on the Mississippi" it shows how our river fleets operate today, how the rivermen live, how the locks function, the part radar plays in overcoming the hazards of fog and heavy weather, and how these barge flotillas carry their varied cargoes. It contains pictorially beautiful river shots, and is an altogether satisfying and absorbing film.

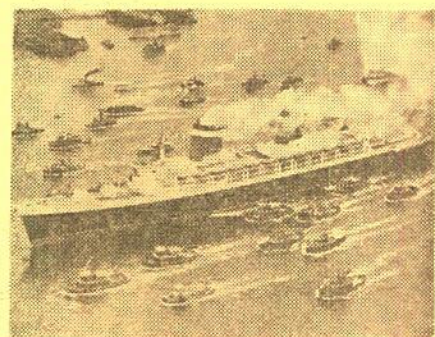
8mm. silent, about 150' (pp. 12c) \$4.49
16mm. sound, about 300' (pp. 9c) \$14.98



BIG GAME ANIMALS of KRUGER NATIONAL PARK

Here is an absolutely stupendous film showing African big game in the tremendous Kruger National Park. It dramatizes the struggle for survival. You'll see antelopes, giraffes, elephants, zebras, crocodiles in the muddy river, and animals of the wild running in terror from a charging lion.

"Big Game Animals of Kruger National Park," about 300-feet, 8mm., on two 200-ft. reels, (pp. 18c), per print \$8.98



MACK SENNETT and HAL ROACH COMEDIES

ALL NIGHT LONG with Harry Langdon

Produced by Mack Sennett in 1924. All about two buddies in France during World War I—Vernon Dent being Harry's buddy. Harry is a private, Vernon is a sergeant. Harry falls in love with Vernon's girl. One of the best.

8mm. silent, about 300' (pp. 18c) \$8.98

BOOBS IN THE WOOD with Harry Langdon

A 1924 Mack Sennett Comedy with timid Harry, of all things, cast as a lumberjack. Probably Langdon's best two-reeler.

6mm. silent, about 300' (pp. 18c) \$8.98

THE CAKE EATER with Will Rogers

Produced by Hal Roach in 1924. Will is cast as a rope-twirling cowpoke, the character he made famous in the Ziegfeld Follies. Very typical Will Rogers!

8mm. silent, about 300' (pp. 18c) \$8.98



CIRCUS TODAY

with Billy Bevan and Madeline Hurlock

Real old time slapstick circus days with lions, tigers, elephants and monkeys—on the loose! This is sawdust and shipstuck at some of its best!

8mm. silent, about 300' (pp. 18c) \$8.98

A CLEVER DUMMY with Ben Turpin

A Keystone-Triangle Comedy of 1917, with Ben cast as a double for a vaudeville dummy. There is difficulty in telling which is the dummy and which is Ben!

8mm. silent, about 300' (pp. 18c) \$8.98

CRAZY LIKE A FOX with Charley Chase

Charley Chase—who brought so many laughs to so many of us back in the silent days. "Crazy Like a Fox" was made in 1925 by Hal Roach. It's the story of two millionaires who want their respective son and daughter, who have never met, to marry. The son of one is Charley—the daughter of the other is Martha Sleeper.

8mm. silent, about 300' (pp. 18c) \$8.98



A HAREM KNIGHT

with Ben Turpin and Madeline Hurlock

One of the funniest and most typical of all the Ben Turpin comedies we have released to date. Ben is cast as Rodney St. Clair, heart-breaker, bon vivant and, in addition, one of the greatest swordsmen in Europe—some kid! Ben's big trouble is getting mixed up with the Passion of some Pasha from Persia—or someplace—and being on the receiving end of a little swordplay. The Sennett Girls appear prominently in one swimming pool sequence—in addition to the harem.

8mm. silent, about 300' (pp. 18c) \$8.98

HER DRAMATIC DEBUT

with Mabel Normand, Fatty Arbuckle and Mack Sennett

A 1914 Keystone showing the inside of a movie studio of that day. And very funny, too!

8mm. silent, about 150' (pp. 12c) \$4.49

LEADING LIZZY ASTRAY with Fatty Arbuckle

It could be called "Only A Farmer's Daughter." A Keystone made by Mack Sennett in 1914.

8mm. silent, about 150' (pp. 12c) \$4.49

SUPER-HOOPER-DYNE LIZZIES

with Billy Bevan

Real 1925 Mack Sennett slapstick—all about radio-controlled cars, television and high-powered electronics—and high powered comedy, too!

8mm. silent, about 300' (pp. 18c) \$8.98

YUKON JAKE with Ben Turpin

Ben, as Sheriff Bill, with Kalla Pasha as Yukon Jake—not to mention the Mack Sennett Bathing Girls who live in igloos.

8mm. silent, about 300' (pp. 18c) \$8.98



KOREA'S FIRST FORTY DAYS

This new Blackhawk production was prepared with the cooperation of the U. S. Department of Defense, this department making available to us authentic combat footage on the early days of the Korean War from which this subject was edited. This film is a compact subject that shows the problems we were up against in Korea in the first few weeks of this conflict, and how we set about developing the campaign that was to drive the North Koreans and the Chinese Communists from Korea.

"Korea's First Forty Days," about 150-feet, 8mm., (pp. 12c) \$4.49

AVIATION FILMS

AIR POWER IN TRANSITION

Here's a close-up of some of America's fighting planes in action—various models of the Sabre Jet, the Savage and the Fury—right on up to guided missiles. Some spectacular action air shots—and shots aboard an aircraft carrier.

8mm. silent, about 150' (pp. 12c) \$4.49

FROM THE FIRST AIR MAIL TO THE DC-7

The first release in Blackhawk's New Aviation Series! It tells the story of commercial air transportation from the first air mail of 1918 when the Army, in conjunction with the Post Office Department, started flying some old DeHavillands between Washington and New York with the mail. The developments of the 1920s are shown, fields first lighted from Chicago to Cheyenne, then Chicago to Salt Lake City and finally from coast to coast. The Boeing 40s—first planes designed for carrying both passengers and mail. Then the Ford Tri-Motor and the Boeing Tri-Motored 80—the Boeing 247—first low winged, all metal transport—the Douglas DC-3, DC-4, DC-6 and DC-7. For every aviation enthusiast, this is it. And there are more films on the way.

8mm. silent, about 300' (pp. 18c) \$8.98

UNITED FLIGHT 608

Here's a swell aviation subject that shows the flight of one of United's big DC-6s from Los Angeles to New York, with a single stop at Chicago, at a time when ground weather in many spots along the way is at winter's worst. We see how alternate routes are planned in case flying weather deteriorates—how the big plane is checked by the flight engineer before take-off—how the pilot is in telephone communication with numerous ground points at the flick of a switch—how an instrument landing is made in heavy overcast at Chicago! Many of the thrilling everyday operational accomplishments of our airlines are dramatically pictured.

8mm. silent, about 300' (pp. 18c) \$8.98



BIBLE STORIES

Now it is possible for you to purchase modern, well-produced motion pictures of famous Bible Stories from both the Old and New Testament. Text titles in this group are all from the King James version of the Bible.

8mm. silent versions, about 300', (pp. 18c), each \$8.98

ABRAHAM'S SACRIFICE

Based on the Book of Genesis, Chapters XXI and XXII.

THE BIRTH OF MOSES

Based on the Book of Exodus, Chapters I and II.

MY BELOVED SON

Based on the Book of Matthew, Chapters III, IV, V and VI.

THE PARABLE OF THE LOST SHEEP

Based on the Book of Luke, Chapter XV.

THE SAVIOUR IS BORN

Based on the Book of Matthew, Chapters I and II, and the Book of Luke, Chapter II.

THE GOOD SAMARITAN

The picturization of the story of the Good Samaritan, based on the account in the Bible.

8mm. version, about 175' (pp. 12c) \$4.98

THE NATIVITY OF OUR LORD

The story of the birth of Jesus—the story known so well to all of us, yet which leads itself to telling in so many different ways.

8mm. black and white silent, about 175' (pp. 12c) \$4.98

8mm. color, silent, about 175' (pp. 12c) \$19.98

Blackhawk Films
DAYENPORT, IOWA



SLIDE SUPPLY COMPANY'S 2"x2" COLOR SLIDES

Slide Supply Company's 2"x2" Color Slides,
eight double frame slides to a set, price per set.... **99c**
Any Three Sets **\$2.79** Any Six Sets **\$4.99**

(Allow 6c-pp. for first slide set, 3c-pp. for each additional slide set from this group.)

The Slide Supply Company line of 2" x 2" color slides is the lowest priced of the many brands now on the market and, considering the price, is of very satisfactory quality. In addition to travel items, there are many sets on flowers and scenes of beauty. We feel confident you'll be pleased with what your money buys in this line of slides.

New England

CS70—Acadia National Park
CS93—Autumn Artistry in New Hampshire
CS171—Autumn Artistry in the White Mountains
CS331—Autumn Splendor, New Hampshire
CS50—Boston, Mass.
CS60—Massachusetts
CS169—Picturesque Maine
CS90—Scenic New Hampshire
CS172—White Mountains of New Hampshire
CS80—Winter in Vermont

New York—State and City

CS115—Famous Buildings of New York City
CS130—New York City
CS500—Niagara Falls (Set No. One)
CS510—Niagara Falls (Set No. Two)
CS1230—Niagara Falls at Night
CS1170—Night and Street Scenes of New York City
CS1140—Skyscrapers of New York City
CS1160—Statues and Bridges of New York City

District of Columbia

CS810—Cherry Blossom Time, Washington, D. C.
CS850—Washington, the City Beautiful
CS800—Washington, the Renowned City

Virginia

CS3270—Beautiful Blue Ridge Parkway, Virginia
CS3190—Skyline Caverns, Virginia
CS890—Autumn Artistry in Old Virginia
CS980—Flowers of Old Virginia
CS160—Gardens of Old Virginia
CS860—Historic Old Virginia
CS750—Mt. Vernon
CS740—Skyline Drive, Shenandoah National Park
CS180—Williamsburg, Virginia

Florida

CS540—Alligator and Ostrich Farm
CS920—Cypress Gardens, Florida
CS840—Daytona Beach, Florida
CS230—Florida Boats (Luxury Fishing Craft)
CS270—Florida Flowers (Set No. One)
CS280—Florida Flowers (Set No. Two)
CS530—Florida Indians and Villages
CS1020—Flowers, Sunken Gardens, St. Petersburg
CS660—Key West, Florida
CS400—Miami, Florida
CS140—Models, Cypress Gardens, Florida
CS760—Parrot Jungle, Miami
CS960—Rainbow Gardens, Florida
CS410—Rare Bird Farm, Miami
CS820—Ringling Art Museum, Sarasota
CS830—Silver Springs, Florida
CS330—St. Augustine, Florida
CS420—St. Petersburg, Florida
CS1010—Sunken Gardens, St. Petersburg
CS350—Tarpon Springs, Florida
3060—Colorful Cypress Gardens
3090—Blossom Time at Cypress Gardens
3080—Colorful Key West
2940—Hollywood, Florida
3030—Ft. Lauderdale, Fla. (Waterfront Homes)
3040—Ft. Lauderdale, Fla. (Bahia Mar)
2930—Boca Raton, Fla.
3100—Weekiwachee Springs
3120—Interesting Spots in Florida
3070—Jungle River Cruise
2920—Alligator Wrestling
2960—University of Miami
2900—Vizcaya
3050—Sequoia, Miami
2910—Miami Serpentine
3020—Coral Gables, Fla.
2970—Miami—Waterfront Scenes
2980—Bayfront Park, Miami
2950—Miami, City of Progress
3010—Blimp Over Miami Beach
2990—Fabulous Miami Beach
2890—Famous Miami Beach Hotels
3000—Beach Scenes, Florida's Gold Coast
3110—Florida Gold Coast

Eastern United States, Miscellaneous

CS1000—Abraham Lincoln in Illinois
CS3240—Among the Scenic Great Smokies
CS1730—Autumn Artistry in the Great Smokies
CS460—The Beautiful Ohio (Ohio River Scenes)
CS1740—The Blue Ridge Mountains
CS170—Charleston, S. C.
CS260—Cleveland, Ohio
CS1260—Floyd Collins Crystal Cave, Kentucky
CS720—The Great Smoky Mountains
CS1440—Greenfield Village, Dearborn, Michigan
CS1240—Lost River Caverns, Pennsylvania
CS1250—Mammoth Onyx Cave, Kentucky
CS100—New Orleans, Louisiana
CS190—Philadelphia, Pennsylvania
CS1600—Savannah, Georgia

Colorado

CS3230—Autumn in Rocky Mountain National Park, Colo.
CS3160—Colorful Colorado in Autumn
CS3320—Colorful Colorado, Rock Formations
CS3250—Majestic Garden of the Gods
CS3330—Monument Canyon, Colorado, in Winter
CS3170—Red Mountain Pass in Autumn, Colorado
CS1090—The Beautiful Colorado Rockies
CS1660—Central City, Colorado
CS120—Colorado
CS1110—Colorado Mountain Vistas
CS1760—Denver, the Mile High City
CS1790—Fantastic Garden of the Gods
CS770—Garden of the Gods, Colorado

CS1130—Indian Shrines and Temples, Mesa Verde
CS1120—Mesa Verde National Park
CS470—Rocky Mountain National Park
CS240—Rocky Mountain Ramblings, Colorado
CS1100—Scenic Colorado
CS1770—Scenic Spots of Denver

Texas

CS1700—Big Bend National Park, Texas
CS1820—Missions of San Antonio, Texas
CS1680—San Antonio, Texas
CS1890—San Jacinto State Park, Texas
CS1830—Scenic San Antonio, Texas

Wyoming

CS10—Grand Teton National Park
CS26—The Spectacular Grand Tetons
CS30—Winter Splendor of the Grand Tetons
CS990—Yellowstone National Park

New Mexico

CS3200—Autumn Glory in New Mexico
CS3210—Indian Ceremonies, Gallup, N. Mex.
CS3290—Scenic Santa Fe, New Mexico

Utah

CS2090—Autumn in Zion Canyon
CS2130—Beauty Spots of Bryce Canyon
CS700—Bryce Canyon National Park
CS2140—Curious Formations of Bryce Canyon
CS1060—Goblin Valley, Utah
CS1070—Hoover Dam, Utah
CS2120—Majestic Views of Bryce Canyon
CS2110—Precipitous Zion Canyon
CS2100—Scenic Zion Canyon
CS560—Zion National Park

Arizona

CS3300—Grand Canyon, Colorful Havasupais
CS3260—Grandeur of the Grand Canyon, Arizona
CS3180—Organ Pipe Cactus National Monument, Arizona
CS3220—Saguaro National Monument, Arizona
CS570—Grand Canyon, Arizona
CS580—Grand Canyon National Park
CS1960—Indian Sand Painting, Arizona
CS950—Monument Valley
CS1910—Nature's Miracles of Monument Valley
CS1950—Navajo Indian Life, Arizona
CS2040—Tombstone, Arizona

Washington State

CS2080—Columbia River Highway
CS790—Mt. Rainier National Park
CS2050—Olympic National Park
CS2330—Scenic State of Washington

Oregon

CS2780—Winter Magic at Crater Lake, Oregon
CS780—Crater Lake National Monument
CS2280—Lambert Gardens, Portland
CS2070—Mt. Hood National Park
CS2190—Oregon Caves National Monument
CS2150—Pictorial Oregon
CS2300—Prehistoric Gardens, Oregon
CS2320—Scenic Coast of Oregon

California

CS1510—Beverly Hills, Calif.
CS610—California Missions (Set No. One)
CS620—California Missions (Set No. Two)
CS1040—Death Valley, California
CS1050—Ghost Towns and Buildings of Death Valley
CS1180—Historic Old Monterey
CS1350—Hollywood at Night
CS2170—Hollywood Bowl
CS380—Hollywood, Calif.
CS1670—Hollywood Movie Stars' Homes
CS1410—Knott's Berry Farm
CS1420—Lassen Volcanic National Park
CS440—Los Angeles, Calif.
CS210—Mojave Desert Snow Scenes
CS1650—Mt. Palomar, Calif.
CS1340—Mt. Wilson, Calif.
CS2270—Pasadena, Calif.
CS2060—Redwood Highway, Calif.
CS1620—San Diego at Night
CS490—San Diego, Calif.
CS1390—San Francisco, Calif.
CS1630—Santa Monica, Calif.
CS1400—Scenic Spots of San Francisco
CS430—Sequoia National Park
CS1920—Springtime in the Mojave Desert
CS1430—Winter in Yosemite National Park
CS900—Yosemite National Park

Tournament of Roses

CS3350—1958 Tournament of the Roses (Set 17)
CS3360—1958 Tournament of the Roses (Set 18)
CS3370—1958 Tournament of the Roses (Set 19)
CS3380—1958 Tournament of the Roses (Set 20)
CS3390—1958 Tournament of the Roses (Set 21)
CS3400—1958 Tournament of the Roses (Set 22)
CS2710—1957 Tournament of the Roses (Set 11)
CS2720—1957 Tournament of the Roses (Set 12)
CS2730—1957 Tournament of the Roses (Set 13)
CS2740—1957 Tournament of the Roses (Set 14)
CS2750—1957 Tournament of the Roses (Set 15)
CS2760—1957 Tournament of the Roses (Set 16)
CS2200—1956 Tournament of the Roses (Set 6)
CS2210—1956 Tournament of the Roses (Set 7)
CS2220—1956 Tournament of the Roses (Set 8)
CS2230—1956 Tournament of the Roses (Set 9)
CS2240—1956 Tournament of the Roses (Set 10)

Miscellaneous

CS3340—Japan, Land of Color and Beauty
CS3130—Roadside America, No. One
CS3140—Roadside America, No. Two
CS3150—Roadside America, No. Three
CS360—Arches National Monument
CS450—Arkansas Ozarks
CS1370—Badlands National Memorial
CS600—Glacier National Park
CS1380—Las Vegas, Nevada
CS220—Oklahoma
CS1330—Petrified Forest National Monument
CS520—Santa Fe, New Mexico
CS1610—Sunset Crater National Monument

Alaska

CS590—Alaska
CS1780—Alaska, the Unusual
CS1550—Mt. McKinley National Park
CS1570—Scenic Alaska
CS1560—Unique Cabins and Buildings, Alaska

U. S. Territories

CS310—Churches and Monuments of Guam
CS1190—El Morro Castle, San Juan, Puerto Rico
CS250—Guam, After World War II
CS300—Hawaii
CS1080—Panama Canal
CS1200—San Juan, Puerto Rico
CS340—Scenic Hawaii, Around Honolulu
CS1210—Scenic Puerto Rico

Canada

CS1290—Banff National Park
CS2310—Butchart's Gardens, Victoria, B. C.
CS880—Canada
CS1930—Colorful Canadian Rockies
CS2340—Colorful Gardens, Victoria, B. C.
CS1750—Halifax, N. S.
CS1310—Jasper National Park
CS390—Ottawa, Capital of Canada
CS870—Quebec City, Canada
CS1300—Scenic Beauties of Banff
CS550—Vancouver, B. C.
CS2160—Victoria the Beautiful
CS1320—Waterton Lakes National Park

Spain and Portugal

CS2830—Granada, Spain
CS2850—Madrid, Spain
CS2800—Pictorial Portugal
CS2810—Scenic Spots of Spain
CS2790—Scenic Sunny Spain
CS2870—Segovia, Spain
CS2840—Seville, Spain
CS2820—Sunny Southern Spain
CS2860—Toledo, Spain

Wild Life, Wild Flowers

CS2250—American Water and Wild Fowl
CS170—Desert Flowers
CS1840—Desert Wild Life, Animals
CS1850—Desert Wild Life, Birds
CS630—Flowers (Set No. 1)
CS640—Flowers (Set No. 2)
CS650—Flowers (Set No. 3)
CS2260—Ocean Floor Habitat
CS1970—The Scenic Beauty of Sunsets
CS1940—Spring Flowers of the Desert

Special Purchase!

GOVERNMENT SURPLUS RADIANT

750-watt, 115-volt

BELL & HOWELL
MEDIUM RING BASE PROJECTION LAMPS

This particular group of lamps is brand new, but is packed in cartons that are soiled, dog-eared and not in what would be called spick-and-span fresh condition. The merchandise is, however, absolutely up to par in its ability to deliver the goods. Because of the soiled cartons, you save even more.

Three 750-watt, 115-volt, Bell & Howell medium ring base projection lamps, Radiant manufacture, in soiled and dog-eared cartons, otherwise new, our No. 42-DC, (pp. 23c), only..... **\$7.99**

Blackhawk's

POT LUCK PACKAGE

of about 400-feet of good used 16mm. sound film

\$2.49

Here's a right attractive buy in a lot of good used 16mm. sound film for very little money. Four hundred feet of film, incomplete, generally from two or three different subjects... features. Westerns, musicals, sports, travels—all the general run of standard subjects. Fun to have just for the heck of it—ideal to use for practice in projector operation.

Blackhawk's 16mm. sound Pot Luck Package of 400-feet of used film, our No. 150-03, (pp. 9c), each only..... **\$2.49**

3 for \$6.99 **6 for \$12.99**
(pp. 24c) (pp. 44c)

Blackhawk's Used 16mm. Sound PRIZE PACKAGE

We have just checked in another big lot of good used 16mm. sound films—complete one reel subjects—each running 250 to 350-feet. We'll be quite frank—there aren't any Woody Woodpecker Cartoons or Laurel and Hardy—or Abbott and Costello films among them—but there is an exceptional variety of titles some of which have carried catalog prices up to \$9.95 in the past.

Blackhawk's "Prize Package" of good used 16mm. sound films, our No. 150-05, (pp. 9c), only..... **\$3.33**

Blackhawk's

Two-For-The-Money PACKAGE

of 16mm. silent film

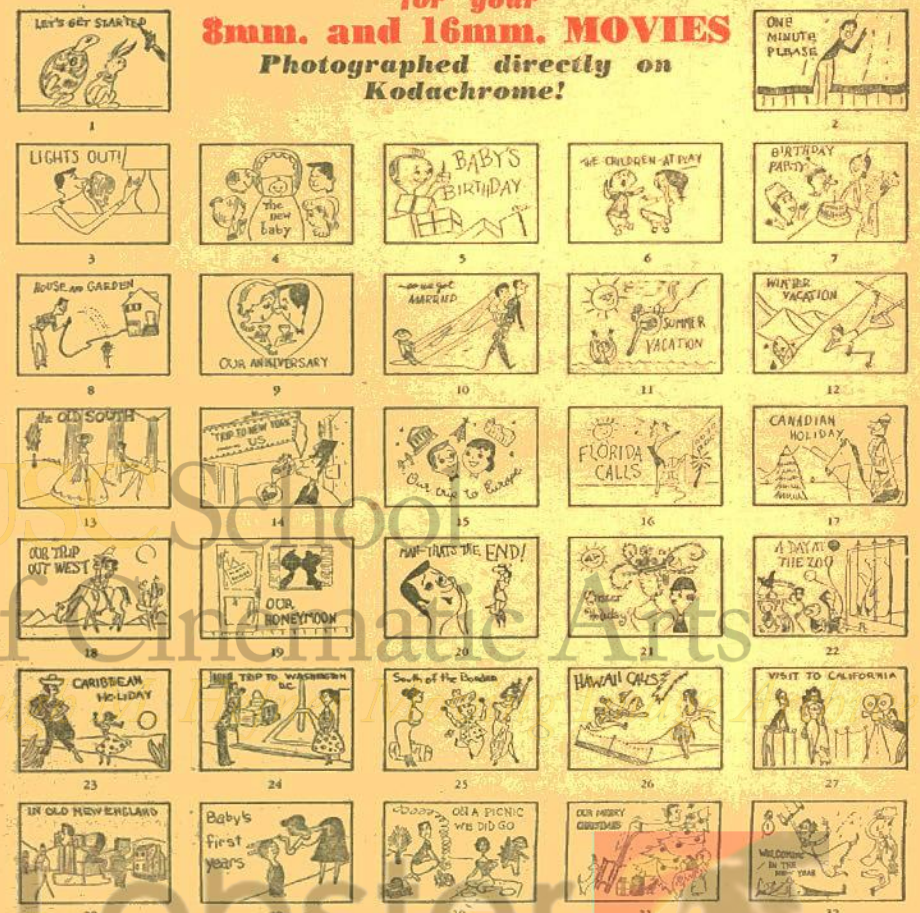
Here's a special whiz of a bargain—two 1-reel 16mm. silent subjects in good used condition for less than the going rate for just one of these subjects new. Contained in this TWO-FOR-THE-MONEY package are two good used complete films, running between 225-feet and 350-feet each in length made up of subjects from such producers as Castle, Hollywood Film, Pictorial, Sterling, Official and similar organizations. There is no duplication within a package, and very little chance of duplication if you purchase several packages. No choice of titles or subject matter.

Blackhawk's TWO-FOR-THE-MONEY package of two used one-reel 16mm. silent films, our No. 150-21, (pp. 14c), only..... **\$4.99**

COLOR TITLE STRIPS

for your **8mm. and 16mm. MOVIES**

Photographed directly on Kodachrome!



8mm. Color Title Strips, photographed directly on Kodachrome, order individually by number, (pp. 3c), each.....

69c

16mm. Color Title Strips, photographed directly on Kodachrome, order individually by number, (pp. 3c), each.....

79c

ONE OF A KIND SALE OF USED 16mm. SOUND PRINTS!

Here is an unusual opportunity for you to select from an unusual group of used 16mm. sound prints—subjects that are a bit out of the ordinary and that do not readily classify in our content groupings. There is only a single print of each of these available as this list is being prepared, so wherever you can, please give us alternate choices.

(Allow 9c-pp. each film of 400-ft. or less; 19c-pp. for each film longer than 400-ft.)

- 20759—RADIO ANTENNAS (450-feet). A scientific film dealing with the fundamentals of the antenna and the vital role it plays in radio communication. \$ 9.95
- 21115—R. A. F. AND EIGHTH AIR FORCE REPORT (800-feet). A report from Britain showing the R. A. F. and our Eighth Air Force on a hedgehopping bombing flight over France and Germany. Also, it shows a Fifth Air Force report from New Guinea. \$14.95
- 24855—REAMING WITH TAPER HAND REAMERS (650-feet). How to ream by hand a tapered hole through a shaft and collar, and fit a taper pin in the reamed hole. \$ 6.66
- 20109—RIVER MELODIES (300-feet), sung by The Rhythm Masters. \$ 6.95
- 20097—RUINED CHURCHES OF MANILA, P. I. (200-feet). The camera catches the scene of total devastation of churches in Manila after the Japanese made their last desperate stand during World War II. \$ 5.95
- 17198—SAIL OVER ICE (400-feet). Capt. Bob Bartlett on one of his many Arctic expeditions. \$ 9.95
- 19670—THE SANDMAN'S HOUR (400-feet). A group of lullabies sung by the world famous Vienna Boys Choir. \$ 9.95
- 14203—SCHOOL DAYS IN THE COUNTRY (550-feet). The health of the many children attending the country schools throughout the state of Wisconsin are protected in the many ways shown in this film. \$ 7.77
- 24316—SEA GOING THRILLS (300-feet). Castle Sports Parade. \$ 9.95
- 24270—SIMBA, KILLER LION (300-feet). Castle Adventure Parade. \$ 9.95
- 20660—SING A LITTLE (300-feet). From the radio studio, Allan Mills broadcasts an invitation to "sing a little and play a little," with the explanation that every song tells a story, and that singing a story is fun. The three ballads are: "The Farmer's Cursed Wife," "Barbara Allen" and "Jack the Sailor." The stories are enacted by puppets as the songs are sung. \$ 7.95
- 23047—SING AMERICA (400-feet). A Community Sing of patriotic American songs. \$ 7.95
- 21813—SING A SONG OF FRIENDSHIP, No. One (300-feet). Famous children's songs on the subject of friendship with others. \$ 7.95
- 21996—THE SINGING BARBERS (300-feet) with The Gordonaires of Waring's Pennsylvanians. Barber shop harmony. \$ 7.95
- 24849—SINGING WITH SINGING SAM (250-feet). Radio's famous Singin' Sam, accompanied by a theatre pipe organ, words of songs are superimposed over the pictorial action. \$ 7.95
- 23912—SNOW SPEED (300-feet). Fast-action winter sports on snow. \$ 7.95
- 23471—THE SONG OF THE REEL (500-feet). Illustrates the great variety of fishing in South Africa, from trout in quiet brooks to sharks along the coast. \$12.95
- 20904—SONGS OF ROMANCE (300-feet). Harry Cool with Emery Deutsch and his Orchestra. \$ 5.99
- 18801—SPEED AND SPOKES (400-feet). An exciting film of automobile, bicycle and motorcycle racing. \$ 9.95
- 21646—THE SPIDER AND THE ANT (300-feet). The famous fable for children. \$ 7.95
- 17508—SPILLS AND THRILLS (300-feet with Spanish narration). Amazing fate-tempting stunts and daredevil chances that make you gasp. \$ 7.95
- 18885—SPORTS FLASHES (300-feet). Diving contests in France, gymnastic exhibitions in Finland, skiing in Norway, "winter baseball" in Latin America, water skiing, soap box derby, and many others. \$ 9.95
- 22498—SPORTS AROUND THE GLOBE (300-feet). Highlights of many sports in countries around the world. \$ 7.95
- 18181—STAND BY FOR SPORTS EXTRA (200-feet). This film deals with one of the track's most exciting events—the 220-yard low hurdle. Examples of technique and form are shown. \$ 5.95
- 18760—STYLES AND SMILES (300-feet). Musical with Virginia Verrill, Harrison and Fisher, Marion Daniels. \$ 5.95
- 20827—SUGAR GROWING IS OUR SWEETEST STORY (225-feet). Australia's fertile sugar belt is the setting for this film, which covers sugar from the time the cane is planted until the final refining processes are complete. \$ 4.98
- 24855—SUPERVISING WOMEN WORKERS (400-feet). Frank Brooks, plant manager, advises Joe Haley, foreman, to remember that women workers haven't the same industrial experience as men and very often have more home responsibilities; and to take these facts into account in his supervision. \$ 8.95
- 24854—SWIM AND LIVE (800-feet). Air Corps training film showing fundamentals of swimming, and how the use of swimming skill can be a prime aid to survival. \$14.95
- 21035—SWIMMING AND DIVING ACES (300-feet). Castle Sport Parade. \$ 7.95
- 18206—TAILOR MADE FOR EVERY JOB (400-feet in Color). The story of International Harvester's "Cub" Tractor. \$ 9.99
- 24083—TEN LITTLE FARMERS (250-feet). A light, amusing animated film which illustrates ten common safety hazards on the farm. \$ 6.66
- 19046—THIS COULD BE AMERICA (200-feet). A U. S. Navy film dealing with the air war against the Japanese mainland in World War II. \$ 5.95
- 16854—THREE TONE POEMS (300-feet). An orchestration and scenes of "Moods in the Forest"—symphonic music against a background of nature. \$ 9.95
- 18886—THRILLS FOR FUN (200-feet). Ski classes in New Hampshire; a Brooklyn grandmother trains for English Channel swim; and a child golf star in action. \$ 5.95
- 20446—TOMORROW IN THE MAKING (500-feet). Streamlined school house, modernistic inventions, one track train in Germany, fantastic automobiles of the future, and many others. \$ 9.95
- 20916—TORONTO SYMPHONY No. Two (300-feet). The third movement from Tchaikowsky's Sixth Symphony played by the orchestra conducted by Sir Ernest MacMillan. \$ 6.95
- 12813—TRACK MEET THRILLS (300-feet). Castle Sports Parade. \$ 6.95
- 20759—TUBE AND SHAPE BENDING (450-feet). Techniques of bending aluminum are illustrated in animation throughout the picture which includes problems in tube bending and the principal factors involved, hand bending small tubes and the uses of template and bending pegs, and bending by means of a power-driven machine. \$ 8.88
- 15355—TURNING TAPER WORK (400-feet). Centering cylindrical wood stock for spindle turning; how to make clearance cuts and why they are made; how to establish the diameter of a taper; how to establish diameters for turning two tapers from a single piece of material; and how to turn the tapers. \$ 5.55
- 20757—USE OF TRAINING FILMS (300-feet). Indicates the correct way of working with training films in the United States Army. \$ 4.98
- 20757—VACUUM TUBES (550-feet). Reviews the diode principle, compares the diode and triode, explains the triode amplifier circuit, amplification of D. C. voltage changes, amplification of alternating voltages, distortion, and amplification of audio frequency signals. \$ 9.95
- 19047—THE VOICE OF TRUTH (250-feet). The story of enemy propaganda on American troops during World War II and particularly "Tokyo Rose". \$ 6.95
- 15805—VOLCANIC FURY (300-feet). White Island in the New Zealand area, and a research party that sets out to survey its volcanic structure. \$ 9.95
- 20642—VRONSKY AND BABIN, No. Two (300-feet). This duopiano team plays Polovitzian Dance. \$ 9.95
- 15801—WHEEL SENSE (700-feet in Color). Intended to teach driving safety to young persons just learning to drive. \$24.95
- 22587—WHEN A MAN'S A PRINCE (600-feet). An early Ben Turpin-Mack Sennett Comedy of the 1920 silent period, with music and sound effects added. It's hilarious. \$24.95
- 23284—WHITE MAGIC (350-feet). Winter sports. \$ 7.95
- 20104—WHO IS MY NEIGHBOR? (800-feet in Color). An account of the growth and purpose of welfare organizations and the Community Chest movement. \$14.95
- 18159—WILD PLAIN (350-feet). The range country of southern France, near the Spanish border, where wild bulls are followed by French cowboys and rounded up for fiestas. \$ 9.95
- 21893—WILD RIVER SAFARI (300-feet). Castle Adventure Parade. \$ 9.95
- 20898—WINNER TAKE NOTHING (450-feet). A dramatic story of trouble in the boxing world starring Lupita Tuvor, Julian Upton, Bob Rice, Eric Colmar, Aline Towne. \$ 9.95
- 17199—WINTER BLUNDERLAND (550-feet). A lesson in what not to do on snow covered streets enacted by a motorist who ignores all the rules. \$ 7.77
- 21036—WINTER SPORTS (300-feet). Official Sports Film. \$ 7.95
- 17349—YANKEE DOODLE HOME (350-feet). Musical with Sid Gary, Neta Carlyle. \$ 5.99
- 21890—YOU SAID A HATFUL (700-feet) with Charley Chase. Hal Roach Comedy. \$19.95
- 13716—ZOO'S WHO (350-feet). A trip to the zoo. \$ 9.95
- 20160—FOOD—SECRET OF THE PEACE (750-feet). Food is shown as the key to stable economies, to the establishment of democracy in those lands once under dictatorial occupation, and to the preservation of law and order. \$ 8.88
- 18746—ANTARCTIC VIGIL (350-feet). The terrain and animal life on Macquarie and Heard Islands in the Antarctic ocean. Shows the research stations, maintained for weather observation, of the Australian Research Expedition on these islands. \$ 9.95
- 21810—VERA APPLETON AND MICHAEL FIELD, Duo-Pianists (300-feet), playing Chopin's "Waltz in D Flat," Bach's "Sicilienne" and Liszt's "Grand Variations". \$ 5.55
- 20898—ARRANGING A BUFFET SUPPER (200-feet). Tips on how to prepare food and plan proper table settings for entertaining at buffet suppers. \$ 4.44
- 23275—AUTOMOBILE LUBRICATION (500-feet). Emphasizes the importance of consistent and methodical lubrication of automobiles and describes how oil and grease contribute to satisfactory performance. \$ 5.55
- 20916—AVE MARIA (250-feet). An organ plays Gounod's well-known classic in Canterbury Cathedral. \$ 4.44
- 19719—BEATING OLD MAN WEATHER (400-feet). Recent scientific developments in processing hay. \$ 4.44
- 23741—CANE CUTTERS (400-feet). The story of sugar cane, its growing and harvesting. \$ 7.77
- 11656—CHORAL CONCERT (300-feet). The Leslie Bell Singers—"Echo Song," "Quand j'étais chez mon pere", "I Couldn't Hear Nobody Pray", "I See the Boy that Builds the Boat" and Schubert's "Ave Maria". \$ 7.77
- 20891—DANGER RIVER (350-feet). Down the Colorado River in a rowboat. \$ 9.95
- 23275—ELEMENTARY MANUAL TRAINING (325-feet). A small wooden gift box and plans for making it are illustrated. The instructor selects various tools and shows the plans to a small boy who proceeds to measure, saw and plane the various pieces needed. \$ 6.66
- 14080—FIXED GAGES (650-feet). Use of snap, plug, ring, thread, screw-plug and flush-pin gages; their importance in modern mass-production. \$ 6.66
- 21625—FOLKSONG FANTASY (250-feet). Animated puppets and birds enact the narratives contained in three familiar folk-songs: "The Riddle Song," "Who Killed Cock Robin" and "The Cooper of Fife". \$ 7.95
- 21264—FRESH FROM YOUR GARDEN (600-feet in Color). Covers all phases of vegetable gardening from seed bed preparation to final harvesting and utilization of the crops. \$19.95
- 14786—KENNEL KINGS (300-feet). Pictorial Sportbeam. Dog champions. \$ 7.95
- 23037—KEYBOARD CONCERT No. Two (300-feet). Piano trio plays "Soiree de Vienne" and "Moment Musical in E Minor" by Schubert. \$ 6.95
- 24270—KILLER GORILLA (300-feet). \$ 9.95
- 18707—LOUIS PASTEUR, MAN OF SCIENCE (450-feet). \$14.95
- 20184—KINGS OF THE ARCTIC (300-feet). \$ 9.95
- 22671—LADY MARINES (600-feet). U. S. Marine Corps Film. \$ 8.95
- 20827—LAUNCHING A SHIP (250-feet). This film pictures the steps in readying a ship for launching, and the many technical jobs that must be done before the champagne bottle is broken. \$ 5.95
- 15766—LISZT'S SECOND HUNGARIAN RHAPSODY (250-feet) played by Gorgy Sandor, pianist. \$ 7.95
- 18677—MAGIC IN AGRICULTURE (950-feet). The story of farm chemistry. Emphasizes the place of the scientist in the farm chemistry team, showing how he plans research projects, conducts his experiments and finally turns his test-tube projects into commercially successful products. \$ 9.95
- 23683—MAINTAINING GOOD WORKING CONDITIONS (350-feet). Two supervisors describe specific ways, dramatically re-enacted, they used to improve working conditions. \$ 6.95
- 18076—MAN AGAINST MOUNTAIN (500-feet). Excitement galore in this film of adventure in mountainous regions of the world. \$ 9.95
- 18888—MAN AND HIS DOG (300-feet). The film deals with a species of sheep dog, a peculiar Australian breed, and shows how the dogs are trained for their work. \$ 9.95
- 18159—MARSH MARAUDERS (350-feet). Hawley-Lord Adventure Film. Shows the natural hazards to ducks such as fire, drought and predatory animals. \$ 9.95
- 14501—METROPOLITAN STRING QUARTETTE PLAYS FOLK SONGS (300-feet). \$ 7.95
- 22962—MISHEL PIASTRO AND HIS ORCHESTRA, REEL TWO (300-feet) plays "Gold and Silver Waltz," "Tales From the Vienna Woods" and music from "The Nutcracker Suite". \$ 9.95
- 20650—THE MOTHER (350-feet). An imaginary episode woven around James McNeill Whistler's famous painting, "The Mother." Stars John Garrick as Whistler. \$ 8.95
- 14000—MOZART'S SERENADE (250-feet) played by the Metropolitan String Quartette. \$ 7.95
- 19036—MR. AND MRS. AMERICA (450-feet). A film issued by the United States Treasury Department during World War II to emphasize the importance of War Bonds, especially interesting for shots of Franklin D. Roosevelt, Henry Morgenthau, Philip Murray, William Green and Eric Johnston. \$ 6.95
- 22673—THE MYSTIC EAST—JAVA (300-feet). \$ 9.95
- 20103—MYSTIC INDIA (300-feet). \$ 9.95
- 21264—NEW CHAMPIONS OF TRANSPORTATION (950-feet in Color). Road tests on proving grounds and highways of a new line of trucks. Excellent color photography adds to the interest. \$19.95
- 22683—A NEW SUPERVISOR TAKES A LOOK AT HIS JOB (500-feet). Bill Todd, a machine tool operator, is made a group leader and his plant superintendent explains to him, through dramatized illustrations, the meaning of working with people instead of machines. \$12.95
- 18782—OFF-SHORE RACE WAY (450-feet). Boats of all kinds are featured in this sports thriller which includes, among others, a motor boat race around Manhattan Island; a boat race on treacherous Arkansas River; races between tug boats, ice sail boats, canoes and sailing boats; propeller-driven boats in Florida Everglades and a speed boat explosion. \$12.95
- 20903—OFF THE BEATEN PATH (225-feet). "Poor Man's Polo"—a sand-lot version of the game which is becoming popular in Florida; "High Flyers"—shots of the A. A. U. gym champs; "Rodeo Champs"—world's roughest and fastest rodeo. \$ 5.95
- 16857—ONE MORE RIVER TO CROSS (200-feet). A cleverly animated cartoon-community sing presentation of the familiar song. \$ 7.95
- 18161—ORPHEUS IN HADES AND PERPETUUM MOBILE (500-feet). The Offenbach Overture and the Strauss novelty played by the Vienna Philharmonic Orchestra. \$ 9.95
- 23149—OVERTURE 1812 (550-feet). The complete 1812 Overture by Tchaikowsky is performed by the Radio Philharmonic Orchestra of Italy under the direction of Fernando Previtali. \$19.95
- 23488—ADVENTURE TODAY—FISHING FOR BLUES (350-feet). A last boat trip with Ray Forrest for an afternoon's fishing for bluefish, the gamiest of all small fish. \$ 9.95
- 24864—AERODYNAMICS: FORCES ACTING ON AN AIR FOIL (850-feet). Theories and principles of the forces acting on airfoils; lift, drag, angle of attack, and wing chord; development and use of wind tunnels to measure forces on a wing form; relationship between lift, drag, wing area, wind velocity, thrust and weight. \$14.95
- 15801—AHEAD OF THE PARADE (1300-feet). The story of Parade Magazine and its efforts to get the inside story of a new model automobile for its pages. \$ 9.99
- 21996—ALL GIRL MELODY MAKERS (300-feet). Dave Schooler and his Twenty-one Swinghearts. \$ 6.66
- 24852—AMERICA'S HIGH SPOTS (300-feet). Highlights of scenic America. \$ 9.95
- 20927—AMERICA'S WONDERLANDS (300-feet). High spots in man of our major national parks. \$ 9.95
- 18901—AN AFTERNOON AT THE ZOO (400-feet). Noted for being great imitators, four chimps assume the leading roles in this film and demonstrate how they can very well be trained in table etiquette. \$ 9.95
- 18230—ANIMAL ARISTOCRACY (300-feet). The aristocrats of the animal world—the albino peacock, the silver pheasant of China, the ferret of the weasel family, snow white Rocky Mountain sheep, an albino ground hog, albino possum, South American albino tortoise, albino deer from Russia. \$ 9.95
- 18889—ANIMAL ORPHANS (400-feet). An interesting film of how animal orphans—a red squirrel, a starling and a wood thrush, a parrot, a gray squirrel and a blind barn sparrow have been successfully raised and trained by kind persons who took over their care and feeding. \$ 9.95
- 14500—ARMED FORCES SCREEN MAGAZINE No. 536 (700-feet). Highlights of the 1955 Pan-American Olympic Games in Mexico City in which U. S. servicemen participated. \$ 9.99
- 24184—ART SURVIVES THE TIMES (350-feet). The story of the creative and artistic life in France; artists at work. \$ 8.88
- 17899—BEETHOVEN'S FIRST SYMPHONY, FIRST MOVEMENT, AND CHOPIN'S WALTZ FROM BALLET MUSIC (300-feet). \$ 9.95
- 11050—BILLY RABURN VS. JACK HAGEN (250-feet). Hollywood Legion Stadium is the scene for this wrestling match. \$ 7.95
- 21819—BIRD CONTROL (400-feet). A John Kieran Kaleidoscope. Small songbirds contribute more to our society than pretty sounds. They police our blossoms and fruit and rid our orchards of destructive insects. Flycatchers, starlings and titmice are shown in their natural habitat. Close-up photography traces the courtship, marriage and home life of some starlings. \$ 7.77
- 20684—BIRD PARADISE (350-feet). A John Kieran Kaleidoscope. How the Grebe, Reed Warbler, Titmouse, Eret, Bittern, Plover and Tern nest—and the observing of their living habits among man-made lakes, irrigation systems and reconstructed riverbeds. \$ 9.99
- 18744—BIRDS AND BILLABONGS (350-feet). Photographs of the beautiful and unusual birds that inhabit the hidden lakes and little known Arnhem Land of Northern Australia. \$ 8.88
- 21793—BIT AND BRIDLE (300-feet). The whole gamut of horsemanship is brilliantly demonstrated by steeplechasers, trotters, pacers, hunters and horsemen at Aiken, S. C., where the finest thoroughbreds in the world are trained. \$ 7.77
- 14062—BITS OF BRITANNY (350-feet). A lovely look at this section of rural France. \$ 9.95
- 24270—BLONDE MENACE (900-feet) with Hugh Beaumont, Cheryl Walker, Kathryn Adams and Cy Kendall. A Michael Shayne Mystery. \$19.95
- 24955—BLUE GRASS (350-feet). A film dealing with the training of thoroughbreds, and horseracing, taken on the Widener Farm in Kentucky. \$ 7.77
- 24229—BORDER BADMEN (350-feet) with Buster Crabbe, Al St. John. \$ 7.77
- 19766—BORDER OUTLAW (700-feet) with Buster Crabbe Al St. John. \$14.44
- 23236—BOSKO'S PICNIC (500-feet) with Bosko the Cine Pup. \$ 7.77
- 24648—BOWLING ACES (300-feet). Castle Sport Parade. \$ 8.95
- 23174—BRITISH-GREEK VICTORIES (300-feet). One of the isolated campaigns in the relatively early days of World War II. \$ 6.66
- 21969—BRYCE-ZION-GRAND CANYON (300-feet). Castle Travel Parade. \$ 9.95
- 21969—CARIBBEAN HOLIDAY (300-feet). Castle Travel Parade. \$ 9.95
- 25013—THE CASE OF LUCY X (800-feet in Color). Shows how a young girl was cured of tuberculosis. \$ 9.99
- 23246—CHEYENNE COWBOY (300-feet). Tex Williams Western. \$ 7.77
- 24325—CHIMP ON THE FARM (300-feet). Chimp-Comedy. \$ 9.95
- 24955—THE CHIMP'S JAMBOREE (300-feet). Castle Chimp Comedy. \$ 9.95
- 24852—CHINOOK'S CHILDREN (300-feet). Alaskan sled dogs. \$ 9.95
- 24355—CIRCUS SLICKER (300-feet). W. C. Fields in one of his funniest comedies. \$12.95
- 24955—CLYDE BEATTY'S ANIMAL THRILLS (300-feet). Castle Adventure Parade. \$ 9.95
- 20916—COLOR STUDIES OF CHOPIN (350-feet). W. Malcubynski is pianist as the camera presents a striking pictorial interpretation for three Chopin selections—"Nocturne, Opus 15, No. 2," "Mazurka, Opus 7, No. 2" and "Tude, Opus 10, No. 12". \$ 9.95
- 20083—COLOSSAL ON CANVAS (700-feet). Bronko Nagurski vs. Vincent Lopez; Ali Baba vs. Dick Lever; and Pico vs. Nick Lutze filmed at Wrigley Stadium in Los Angeles with Max Baer, former world's heavyweight champion as referee. \$19.95
- 24229—COMICAL CAFERS (300-feet). Musical with The Four Polks, Martha Wayne. \$ 6.66
- 18156—CONCERTO (I PICCOLI DI PODRECCA) (350-feet). Classical piano selections are performed by a puppet pianist. Other puppets appear during the musical presentation. \$ 6.66
- 19045—COUNTRY TOWN (650-feet). The story of a day in one of Britain's market towns whose history dates back to the 7th century. \$12.22

(All items listed on this page are limited in quantity. We recommend, therefore, that you do not order anything from this page after Monday, November 10, 1958.)

Blackhawk Films®
DAVENPORT, IOWA

SAVE UP TO 50% ON YOUR PROJECTION LAMPS

We now have in stock the biggest selection of bargain priced projection lamps in our history—government surplus lamps of Radiant, Sylvania and General Electric manufacture—fresh stock in certain sizes from Westinghouse. But whether fresh stock from Westinghouse or government surplus, all of these lamps are in their original cartons, brand new and first quality in every way. But stocks at these prices are limited, so order soon!

Postage: One lamp, 12c, two lamps, 24c, then each additional lamp 4c.

WESTINGHOUSE (FRESH STOCK) 1000-watt, 115-volt, T-12 BELL & HOWELL RING BASE

(List price, \$7.05 each. Our No. 42-18)

One \$5.49
Three for \$15.99 Six for \$29.98

RADIANT (GOV'T. SURPLUS) 1000-watt, 115-volt, T-12 MEDIUM PREFOCUS

(List price, \$6.25 each. Our No. 42-DG)

One \$2.88
Three for \$8.49 Six for \$15.49

WESTINGHOUSE (FRESH STOCK) 1000-watt, 115-volt, T-12 MEDIUM PREFOCUS

(List price, \$6.25 each. Our No. 42-15)

One \$4.98
Three for \$14.49 Six for \$27.98

RADIANT (GOV'T. SURPLUS) 750-watt, 115-volt, T-12 BELL & HOWELL RING BASE

(List price, \$5.80 each. Our No. 42-DC)

One \$3.29
Three for \$9.49 Six for \$18.98

WESTINGHOUSE (FRESH STOCK) 750-watt, 120-volt, T-12 BELL & HOWELL RING BASE

(List price, \$5.80 each. Our No. 42-13)

One \$4.79
Three for \$14.98 Six for \$28.98

SYLVANIA (GOV'T. SURPLUS) 750-watt, 120-volt, T-12 MEDIUM PREFOCUS

(List price, \$4.95 each. Our No. 42-DF)

One \$2.77
Three for \$7.88 Six for \$14.88

WESTINGHOUSE (FRESH STOCK) 750-watt, 120-volt, T-12 MEDIUM PREFOCUS

(List price, \$4.95 each. Our No. 42-11)

One \$3.98
Three for \$11.49 Six for \$21.98

BLACKHAWK (FRESH STOCK) JAPANESE IMPORT 750-watt, 120-volt, T-12 MEDIUM PREFOCUS

(Our No. 42-12)

Two for \$4.98 Six for \$13.98

WESTINGHOUSE (FRESH STOCK) 500-watt, 115-volt, T-10 MEDIUM PREFOCUS

(List price, \$4.60 each. Our No. 42-08)

One for \$3.49 Three for \$9.98

VOTAR (FRESH STOCK) JAPANESE IMPORT 500-watt, 115-volt, T-10 MEDIUM PREFOCUS

(Our No. 42-19)

One for \$2.29 Three for \$5.99

WESTINGHOUSE (FRESH STOCK) 300-watt, 115-volt, T-8½ S. C. B.

(List price, \$3.10 each. Our No. 42-04)

One \$2.49
Three for \$6.98 Six for \$13.98

VOTAR (FRESH STOCK) JAPANESE IMPORT 300-watt, 115-volt, T-8½ S. C. B.

(Our No. 42-20)

One for \$1.49 Three for \$3.99

GENERAL ELECTRIC (GOVERNMENT SURPLUS) 300-watt, 120-volt, T-10 MEDIUM PREFOCUS

(List price, \$4.20 each. Our No. 42-DA)

One \$1.99
Three, \$5.67 Twelve, \$21.99

WESTINGHOUSE (FRESH STOCK) 300-watt, 120-volt, T-10 MEDIUM PREFOCUS

(List price, \$4.20 each. Our No. 42-06)

One for \$2.59 Three for \$7.49

COLOR FILM for your CAMERAS!

35mm. -:- 8mm. -:- 16mm.

ANSCOCHROME EKTACHROME
KODACHROME

FRESH STOCK ONLY—NOT OUTDATED OR SURPLUS FILM!

The color film in this group is all priced including processing, with mailing bags or cartons provided for mailing by you direct to the laboratory—the processed film being returned, ready to show, direct to your address. All Ektachrome and Kodachrome, and the 35mm. Anscochrome, include processing by Technicolor in either New York or Hollywood. The 16mm. Anscochrome includes processing by Ansco at your choice of Ansco laboratories in the United States.



SUPER ANSCOCHROME

COLOR FILM
in 20-exposure 35mm. rolls

A. S. A. 100

20-exposure 35mm. Super Anscochrome Daylight (our No. 13-43), including processing by Technicolor, plus 8c postage per roll, only \$3.39

20-exposure 35mm. Super Anscochrome Tungsten (our No. 13-48), including processing by Technicolor, plus 8c postage per roll, only \$3.39

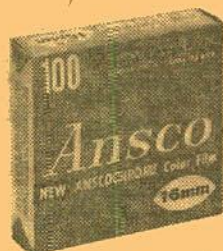


REGULAR ANSCOCHROME
COLOR FILM
in 20-exposure 35mm. rolls

A. S. A. 32

20-exposure 35mm. Regular Anscochrome Daylight (our No. 13-01), including processing by Technicolor, plus 8c postage per roll, only \$2.79

20-exposure 35mm. Regular Anscochrome Flash (our No. 13-02), including processing by Technicolor, plus 8c postage per roll, only \$2.79



REGULAR ANSCOCHROME
COLOR FILM
in 16mm.

A. S. A. 32

100-ft., 16mm. Regular Anscochrome, either Daylight (our No. 25-01) or Tungsten (our No. 25-02), processing by Ansco included, plus 18c per roll postage, only \$9.99

50-ft., 16mm. Regular Anscochrome, magazine load, either Daylight (our No. 25-03) or Tungsten (our No. 25-04), processing by Ansco included, plus 18c per roll postage, only \$5.99

ETHYLOID FILM CEMENT
IN TUBES



Here's a real revolutionary packaging for film cement—a squeeze-tube container with plastic cap. No more syrupy cement, dried out brushes and cement wells to trouble you. The cement stays right in the tube until you apply it to the splice. Ethylod Film Cement Tube, our No. 22-02, plus 8c postage, only 89c

LEADER STOCK

Put adequate leaders at the beginning and end of your films. Let them protect your valuable pictures by taking the handling that the film subject would otherwise get.

16mm. Leader Stock, one side perforated for use with sound film, 100' length, our No. 27-02, plus 8c postage, only \$1.59

8mm. Opague Leader Stock, 50' length, our No. 27-01, plus 6c postage, only 79c



KODACHROME COLOR FILM
in 20-exposure 35mm. rolls

A. S. A. 10

20-exposure 35mm. Kodachrome Daylight (our No. 13-04), including processing by Technicolor, plus 8c postage per roll, only \$2.79

20-exposure 35mm. Kodachrome Flash (our No. 13-05), including processing by Technicolor, plus 8c postage per roll, only \$2.79

EKTACHROME COLOR FILM
in 20-exposure 35mm. rolls

A. S. A. 32

20-exposure 35mm. Ektachrome Daylight (our No. 13-06), including processing by Technicolor, plus 8c postage per roll, only \$2.79

20-exposure 35mm. Ektachrome Flash (our No. 13-07), including processing by Technicolor, plus 8c postage per roll, only \$2.79



8mm. KODACHROME
CAMERA FILM

8mm. double 25-ft. roll Kodachrome Daylight, A. S. A. 10 (our No. 25-05), or Type A. S. A. 16 (our No. 25-06), including processing by Technicolor, plus 8c per roll postage, only \$3.29

8mm. double 25-ft. magazine Kodachrome Daylight, A. S. A. 10 (our No. 25-07), or Type A. S. A. 16 (our No. 25-08), including processing by Technicolor, plus 12c per roll postage, only \$4.29

16mm. KODACHROME
CAMERA FILM

100-ft., 16mm. roll Kodachrome Daylight, A. S. A. 10 (our No. 13-16), or Type A. S. A. 16 (our No. 13-17), including processing by Technicolor, plus 18c per roll postage, only \$9.69

50-ft., 16mm. magazine Kodachrome Daylight, A. S. A. 10 (our No. 13-18), or Type A. S. A. 16 (our No. 13-19), including processing by Technicolor, plus 18c per roll postage, only \$5.99

ETHYLOID FILM CEMENT
FILM CEMENT

Here is the finest film cement we have run across for splicing all types of motion picture film. Comes in 1-pint can with easy-pouring spout for refilling cement bottles.

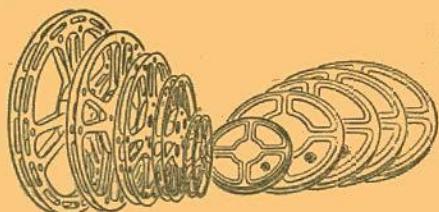
1-pint can Ethylod Film Cement, our No. 22-01, plus 27c postage, only \$1.98



100-Ft. CAPACITY, ALMOST
NEW 16mm. FILM CANS

These are the cans that hold the standard 100-ft. capacity film reels. Ideal for editing or storing miscellaneous film lengths. Used for television print circulation, thus almost new.

Box of 24, our No. 54-01, only \$1.39



NEW REELS and CANS for 16mm., 8mm. and MAGNETIC TAPE

Made by one of the top manufacturers, Goldberg Bros. of Denver, these reels and cans are available from Blackhawk Films at the bargain prices you have come to depend on here. The reels are stamped from a good grade of steel with sufficient spring to resist bending, yet are light in weight. Cans are embossed to achieve maximum rigidity. Reels and cans are of matching baked dull brown enamel finish, except that "economy" reels are gray enamel.

REELS

2000-ft. capacity 16mm. reels, our No. 51-08:
Each, plus 31c postage \$ 4.49
Three, plus 51c postage \$11.98
Six, plus 75c postage \$21.98

1600-ft. capacity 16mm. reels, our No. 51-07:
Each, plus 31c postage \$ 2.49
Three, plus 43c postage \$ 6.98
Six, plus 63c postage \$12.98

1200-ft. capacity 16mm. reels, our No. 51-06:
Each, plus 31c postage \$ 2.29
Three, plus 43c postage \$ 6.49
Six, plus 59c postage \$11.98

800-ft. capacity 16mm. reels, our No. 51-05:
Each, plus 27c postage \$ 1.98
Three, plus 35c postage \$ 5.49
Six, plus 47c postage \$ 9.98

600-ft. capacity 16mm. reels, our No. 51-04:
Each, plus 27c postage \$ 1.79
Three, plus 35c postage \$ 4.98
Six, plus 47c postage \$ 8.98

400-ft. capacity 16mm. reels, our No. 51-03:
Each, plus 18c postage \$.79
Three, plus 27c postage \$ 1.98
Six, plus 31c postage \$ 3.49

400-ft. capacity "economy" 16mm. reels, our No. 51-11:
Three, plus 23c postage \$ 1.69
Six, plus 27c postage \$ 2.98

7-inch diameter 8mm. or magnetic tape reels, our No. 51-02:
Each, plus 11c postage \$.79
Three, plus 27c postage \$ 1.98
Six, plus 31c postage \$ 3.49

7-inch diameter "economy" 8mm. or magnetic tape reels, our No. 51-10:
Three, plus 27c postage \$ 1.69
Six, plus 35c postage \$ 2.98

5-inch diameter 8mm. or magnetic tape reels, our No. 51-01:
Each, plus 11c postage \$.69
Three, plus 23c postage \$ 1.79
Six, plus 27c postage \$ 2.98

5-inch diameter "economy" 8mm. or magnetic tape reels, our No. 51-09:
Three, plus 23c postage \$ 1.69
Six, plus 27c postage \$ 2.49

CANS

2000-ft. capacity 16mm. cans, our No. 50-08:
Each, plus 35c postage \$ 4.49
Three, plus 63c postage \$11.98
Six, plus 75c postage \$21.98

1600-ft. capacity 16mm. cans, our No. 50-07:
Each, plus 35c postage \$ 2.49
Three, plus 55c postage \$ 6.98
Six, plus 87c postage \$12.98

1200-ft. capacity 16mm. cans, our No. 50-06:
Each, plus 31c postage \$ 2.29
Three, plus 51c postage \$ 6.49
Six, plus 79c postage \$11.98

800-ft. capacity 16mm. cans our No. 50-05:
Each, plus 27c postage \$ 1.98
Three, plus 39c postage \$ 5.49
Six, plus 55c postage \$ 9.98

600-ft. capacity 16mm. cans, our No. 50-04:
Each, plus 27c postage \$ 1.79
Three, plus 35c postage \$ 4.98
Six, plus 47c postage \$ 8.98

400-ft. capacity 16mm. cans, our No. 50-03:
Each, plus 27c postage \$.79
Three, plus 27c postage \$ 1.98
Six, plus 35c postage \$ 3.49

7-inch diameter for 8mm. or magnetic tape cans, our No. 50-02:
Each, plus 14c postage \$.79
Three, plus 27c postage \$ 1.98
Six, plus 35c postage \$ 3.49

5-inch diameter for 8mm. or magnetic tape cans, our No. 50-01:
Each, plus 11c postage \$.69
Three, plus 23c postage \$ 1.79
Six, plus 27c postage \$ 2.98

400-ft., 16mm.

FIBERGLASS REELS

Here is a fine reel at a low, low price. Light weight, extremely resistant to breakage and the most perfectly balanced of any reel. No bending hazards as in metal reels.

Six 400-ft., 16mm. Fiberglass Reels, our No. 51-12, plus 31c postage \$2.19

SCREW DRIVER KIT SC-5

The ideal screw driver kit for every camera-projector fan. Contains five hardened nickel plated blades in these widths—.10-inches, .08-inches, .07-inches, .05-inches and .04-inches.

Our No. 67-01, plus 6c postage, only \$1.49





Permit No. 344
Davenport, Iowa
PAID
U. S. POSTAGE
BULK RATE

Bargain Bulletins by FIRST CLASS MAIL or AIR MAIL

This FIRST CLASS MAIL and AIR MAIL subscription to Blackhawk's Bargain Bulletins will give you the advantage, irrespective of where you live, of getting a copy of each new issue several days to several weeks sooner than would otherwise be the case. Mailing of these subscription catalogs will be on the day each new issue comes in from the printer—whereas the mailing of an entire edition to our free distribution list stretches out for seven to ten days after receipt of the edition here.

A year's subscription, which will probably run from 14 to 17 different editions, will cost you as follows:

UNITED STATES, CANADA, MEXICO

FIRST CLASS MAIL SUBSCRIPTION \$1.50
AIR MAIL SUBSCRIPTION \$2.50

COUNTRIES OTHER THAN UNITED STATES, CANADA, MEXICO

FIRST CLASS MAIL SUBSCRIPTION \$2.50
AIR MAIL SUBSCRIPTION TO ANY CENTRAL OR SOUTH AMERICAN COUNTRY \$6.00
AIR MAIL SUBSCRIPTION TO ANY EUROPEAN COUNTRY OR ISLAND IN THE ATLANTIC \$9.00
AIR MAIL SUBSCRIPTION TO ANY COUNTRY IN AFRICA, ASIA, OR TO ANY PACIFIC OR MEDITERRANEAN COUNTRY \$15.00

Fill out this special subscription coupon and mail to us with your remittance:

BLACKHAWK FILMS DAVENPORT, IOWA

Please enter my subscription to the Blackhawk Bargain Bulletin for one year, mailing to me to me by (check appropriate square):

☐ First Class Mail at \$..... for which my remittance is enclosed.
☐ Air Mail at \$..... for which my remittance is enclosed.

Name
Street and Number
City Zone, if any State

IN FILLING IN COUPON, PLEASE PRINT. ALSO, LET US KNOW PROMPTLY OF ANY CHANGE IN YOUR ADDRESS

A FINE SELECTION OF POPULAR FEATURES and WESTERNS

on which good used 16mm.
sound prints are available!

Most subjects are on two 1600-foot or 1200-foot reels—a few longer ones on three 1600-foot reels. Average minimum running time of Westerns is about 60-minutes; of features, about 70-minutes. Allow 44c per print postage.

ALASKA with Kent Taylor, Margaret Lindsay \$49.95
BACHELOR'S DAUGHTERS with Gail Russell, Claire Trevor, Adolphe Menjou \$39.95
BAD MEN OF ARIZONA by Zane Grey, with Robert Cummings, Joe Cook, Buster Crabbe, June Martel \$49.95
BELOW THE DEADLINE with Warren Douglas, Ramsay Ames \$19.98
BORDER ROUNDUP with George Houston and Al St. John \$29.95
BORN TO SPEED with Johnny Sands, Terry Austin, Don Castle \$39.95
BOWERY CHAMPS with The East Side Kids \$49.95
BRUTE MAN with Tom Neal, Jane Adams, Rondo Hatton \$29.95
BUFFALO BILL RIDES AGAIN with Jennifer Holt, Lee Shumway \$39.95
CALL OF THE PRAIRIE with William Boyd as Hopalong Cassidy \$39.95
THE DALTON GANG with Don Barry, Betty Adams, Robert Lewery \$49.95
DANGEROUS MONEY with Sidney Toler as Charlie Chan \$39.95
DANNY BOY with Robert Henry and Ace, the Dog \$29.95
DOWN MISSOURI WAY with Martha O'Driscoll, John Carradine \$24.95
FLIGHT TO NOWHERE with Alan Curtis, Evelyn Ankers \$39.95
GAS HOUSE KIDS GO WEST with Carl "Alfalfa" Switzer, Emory Parnell \$39.95
GINGER with Frank Albertson, Barbara Reed \$39.95
GRAND CANYON with Richard Arlen, Mary Beth Hughes \$49.95
GUNFIRE with Don Barry, Pamela Blake \$39.95
GUNS OF THE LAW with Dave O'Brien, Jim Newell \$29.95
THE HAT BOX MYSTERY with Tom Neale, Pamela Blake \$29.95
HEROES OF THE ALAMO with Earl Hodgins, Bruce Warren \$49.95
HIGH SCHOOL HERO with Freddie Stewart, June Preisser \$39.95
HILLS OF OLD WYOMING with William Boyd as Hopalong Cassidy \$39.95
HOLLYWOOD BARN DANCE with Ernest Tubbs and his Troubadours \$59.95
I'M FROM ARKANSAS with Slim Summerville, El Brendel \$39.95
IRISH LUCK with Frankie Darro, Lillian Elliott \$19.98
JACK LONDON with Michael O'Shea, Susan Hayward \$59.95
JUNIOR PROM with Freddie Stewart, June Preisser \$29.95
THE KANGAROO KID with Jack O'Mahoney, Veda Ann Borg \$39.95

KILLER DILL with Stuart Erwin, Anne Gwynne \$29.95
THE LADY CONFESSES with Mary Beth Hughes \$19.98
LADY, LET'S DANCE with Belita, James Ellison \$39.95
LET'S GET TOUGH with The East Side Kids \$39.95
LITTLE MEN with Jack Oakie, George Bancroft, Kay Francis \$69.95
THE LONE RIDER AND THE BANDIT with George Houston, Al St. John \$29.95
LOST CANYON with William Boyd as Hopalong Cassidy \$39.95
THE LOVABLE CHEAT with Charles Ruggles, Peggy Ann Garner \$29.95
MR. MUGGS STEPS OUT with The East Side Kids \$39.95
PECK'S BAD BOY WITH THE CIRCUS with Tommy Kelly, Spanky MacFarland, Edgar Kennedy \$49.95
THE POINTING FINGER with John Stuart, Viola Keats \$19.98
POLICE ROOKIE with Gordon Jones, Joyce Compton \$39.95
PRIDE OF THE BOWERY with The East Side Kids \$49.95
WEST OF THE ALAMO with Jimmy Wakely, Lee "Lasses" White \$39.95
WHITE PONGO with Richard Fraser, Maris Wrixon \$39.95
YUKON FLIGHT with James Newell as Renfrew of the Royal Mounted \$29.95
BLESS 'EM ALL with Hal Monty, Max Bygraves, Patricia Linova and Sybil Amiel, The hilarious adventures of a private in the British Army during World War II \$29.95
DRIFTIN' RIVER with Eddie Dean \$24.95
FUGITIVE OF THE PLAINS with Buster Crabbe, Al St. John \$29.95
HOSTILE COUNTRY with James Ellison, Russell Hayden \$29.95
THE JACKIE ROBINSON STORY with Jackie Robinson, Ruby Dee \$69.95
KNIGHTS OF THE RANGE by Zane Grey, with Jean Parker, Russell Hayden \$59.95
MARSHAL OF HELLDORADO with James Ellison, Russell Hayden \$29.95
THE PRAIRIE by James Fenimore Cooper, with Lenore Aubert, Alan Baxter \$19.98
ROLLIN' HOME with Jean Parker, Russell Hayden, Raymond Hatton \$39.95
THE SPIRIT OF WEST POINT with Felix "Doc" Blanchard, Glen Davis \$49.95
UNDERCOVER MAN with William Boyd as Hopalong Cassidy \$39.95

WILD COUNTRY with Eddie Dean \$29.95
WILD HORSE with Hoot Gibson \$29.95
RIMFIRE with James Millican, Mary Beth Hughes \$29.95
SHOOT TO KILL with Russell Wade, Edmond MacDonald \$29.95
SILVER SKATES with Kenny Baker, Belita Irene Dare \$49.95
SPECIAL INSPECTOR with Rita Hayworth \$34.95
STRANGE VOYAGE with Eddie Albert, Matt Willis \$39.95
THREE ON A TRAIL with William Boyd as Hopalong Cassidy \$39.95
TWO DOLLAR BETTOR with Steve Brodie, Marie Windsor \$34.95
THE UNKNOWN GUEST with Victor Jory, Veda Ann Borg \$29.95
CHEERS FOR MISS BISHOP with Martha Scott, William Gargan \$69.95
COLORADO RANGER with James Ellison, Russell Hayden \$29.95
ELLIS ISLAND with Donald Cook, Peggy Shannon \$24.95
THE FIGHTING WESTERNER by Zane Grey, with Randolph Scott, Ann Sheridan \$49.95
THE GLORY TRAIL with Tom Keene \$19.98
MURDER IS NEWS with Iris Meredith, John Gallauder \$29.95
OUTLAWS OF THE PLAINS with Buster Crabbe, Al St. John \$24.95
SON OF THE NAVY with James Dunn, Jean Parker \$49.95
THE STRANGLER OF THE SWAMP with Rosemary LaPlante, Robert Barratt \$29.95
THE SUNDOWNERS with Robert Preston, Robert Sterling, John Barrymore, Jr. \$49.95
TALES OF ROBIN HOOD with Robert Clark, Mary Hatcher \$69.95
THE TORCH with Paulette Goddard, Gilbert Roland \$49.95
TRAIL OF THE MOUNTIES with Russell Hayden, Jennifer Holt \$29.95
WINDJAMMER with George O'Brien, Constance Worth \$49.95
BELLS OF SAN FERNANDO with Donald Woods, Gloria Warren \$29.95
THE BIG FIX with James Brown, Sheila Ryan, Regis Toomey \$49.95
DOWN MEMORY LANE with Steve Allen, Franklin Pangborn, W. C. Fields, Bing Crosby and the early Sennett Stars \$69.95
GHOSTS ON THE LOOSE with The East Side Kids \$49.95
GOD'S COUNTRY (In Color) with Robert Lowery, Helen Gilbert \$89.95
THE GOLDEN GLOVES STORY with James Dunn, Kay Westfall \$29.95
HARVEST MELODY with Rosemary Lane, Johnny Downs \$24.95
NORTHWEST TRAIL (In Color) with Bob Steele, Joan Woodbury \$89.95
PHILO VANCE RETURNS with William Wright, Terry Austin \$19.98
PHILO VANCE'S SECRET MISSION with Alan Curtis, Sheila Ryan \$29.95
RADAR SECRET SERVICE with John Howard, Adele Jurgens, Tom Neal \$59.95
TWILIGHT ON THE TRAIL with William Boyd as Hopalong Cassidy \$39.95
WESTERN PACIFIC AGENT with Kent Taylor, Sheila Ryan \$59.95
WILDFIRE (In Color) with Bob Steele, Sterling Holloway \$89.95